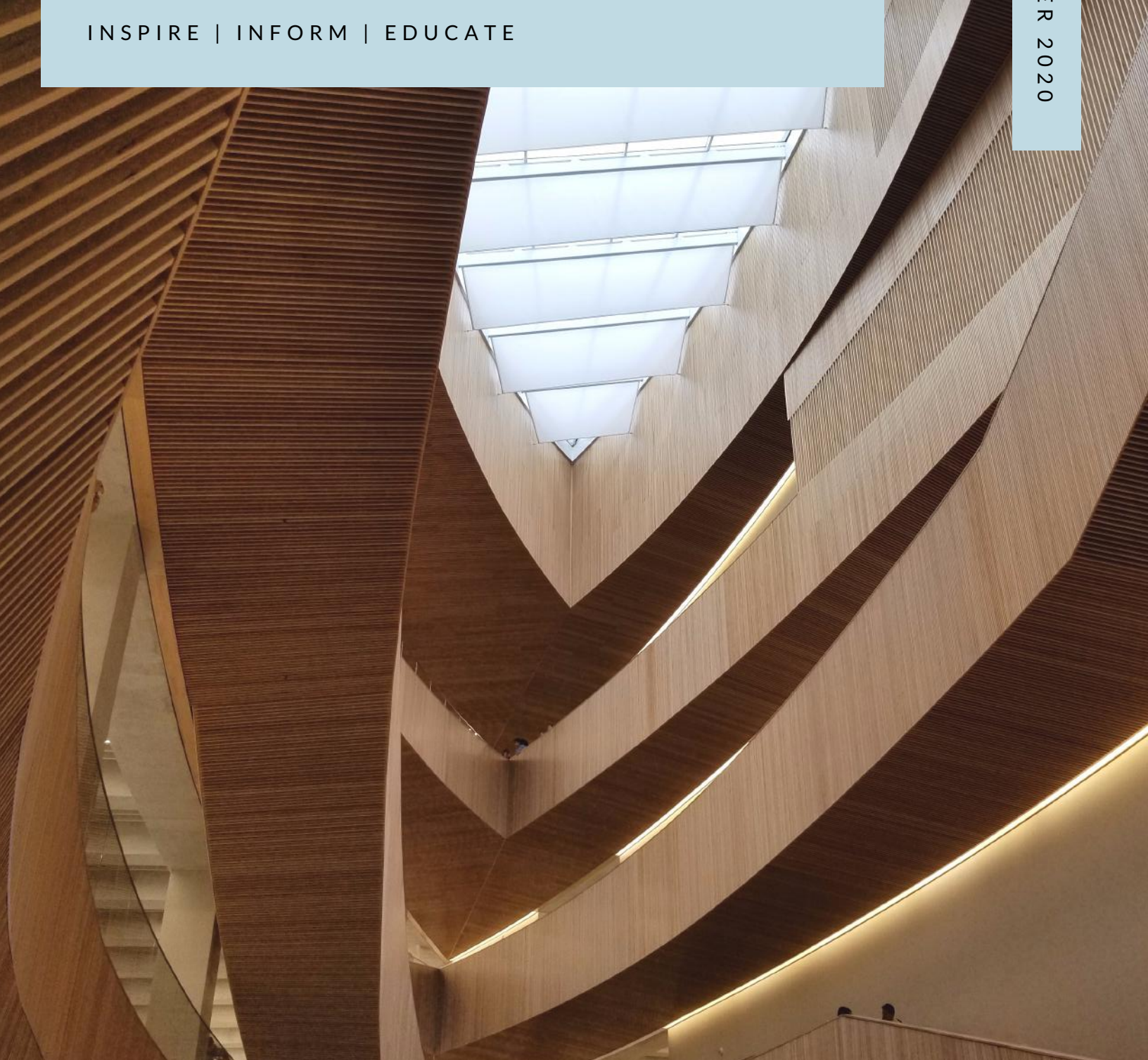


Surface Scene

INSPIRE | INFORM | EDUCATE

WINTER 2020



CELEBRATING A SECOND

Calgary's Central Library celebrates its second year

AN ELEMENT DEFINED

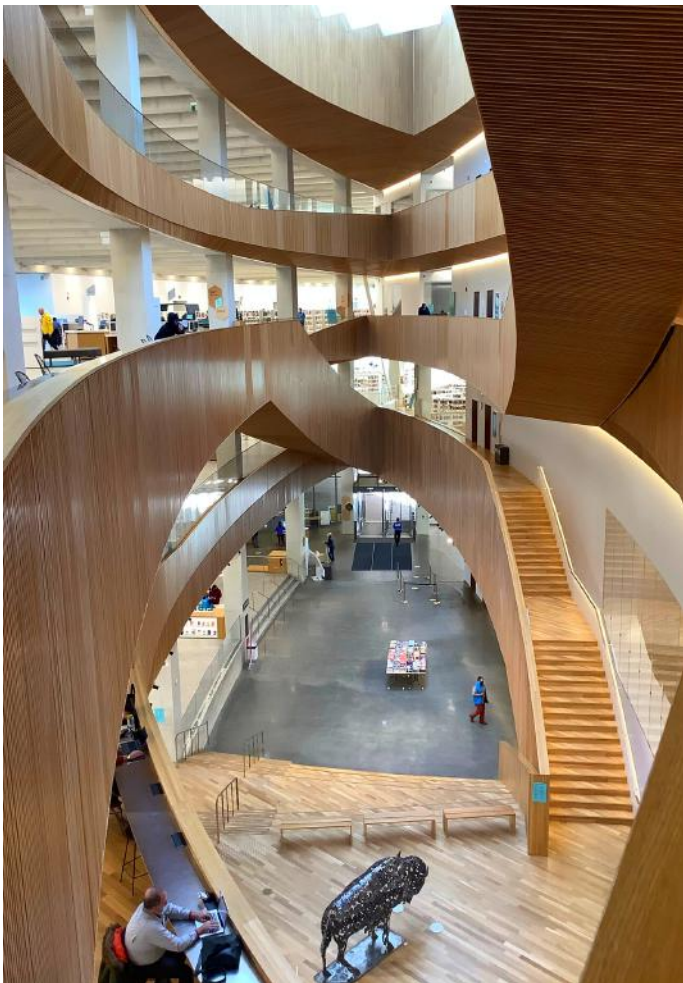
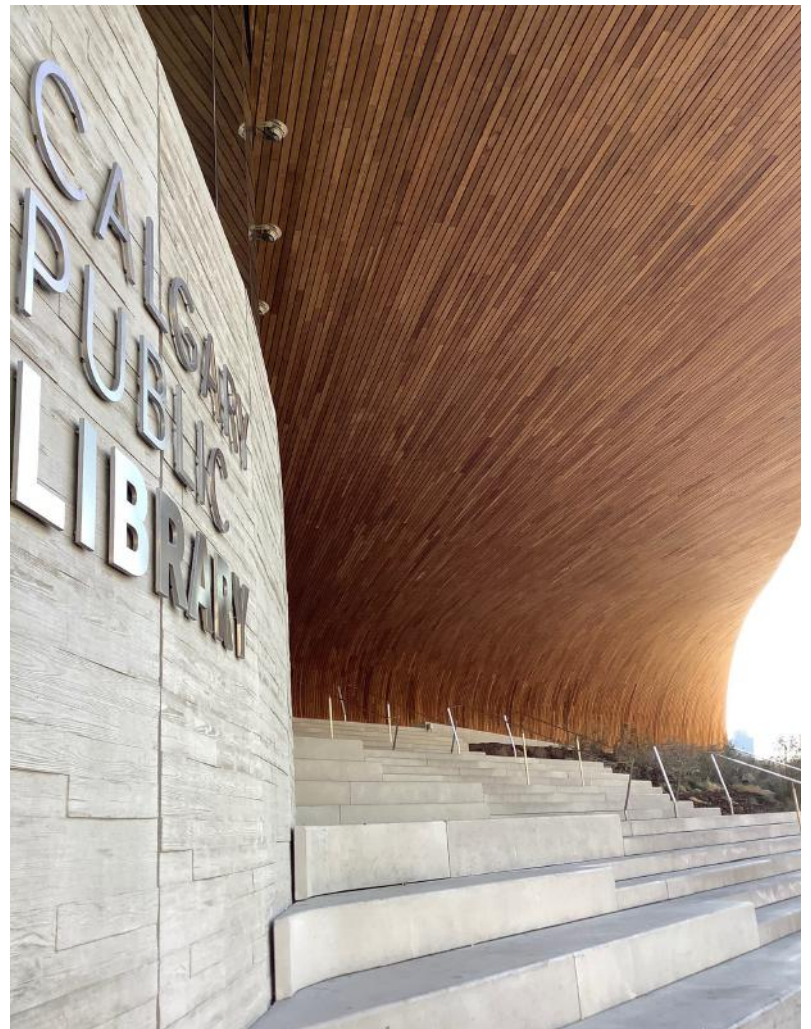
Divide a space without enclosing it

MOUNTING PANELS

Solutions for mounting decorative panels

Celebrating a Second

One of the challenges in Architecture and Interior Design from a projects conception, construction, through to opening is in meeting both the “anticipated” and “unanticipated” needs. As Calgary’s Central Library moves into its second year since opening on November 2, 2018, the library is now meeting the challenges and opportunities of the unexpected, in light of 2020’s global pandemic. For the first time in the 114-year history of the Calgary Public Library system all 21 branches closed on March 16th of 2020, including the Central Library location.

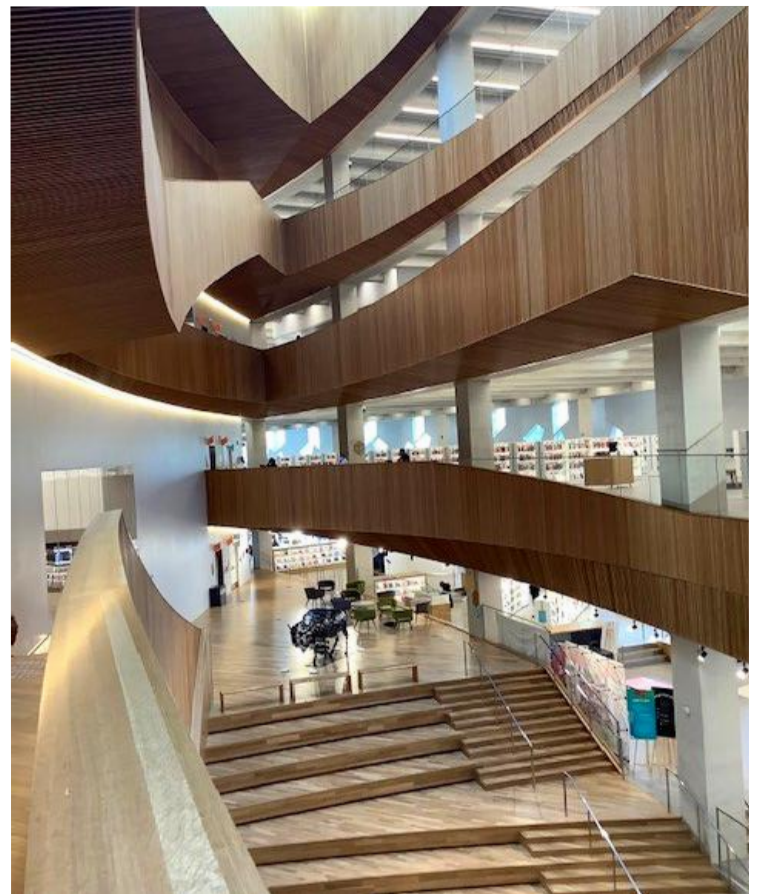


The library team developed a plan for the way forward. While closed behind the scenes the library system continued to function and grow in supporting members with multiple resources and services virtually. A safe, calibrated reopening of all facilities including the downtown Central Library branch occurred in July of 2020. The branches are working towards regaining their presence in the city as beloved community spaces.

The team worked on “over communicating” with its staff and the community in reassuring all parties of the reopening steps. It is a journey of “trust building” as the 240,000 square foot downtown facility saw daily visitor numbers pre-Covid of over 5,000 people per day. Upon reopening visitor numbers declined but are now climbing back up to around 2,000 visitors daily.

How do you safely reopen a public space in a socially-distanced downtown core?

According to Mary Kapusta, Communications Director for the Calgary Public Library, in returning to a working operational normal; "you do a little bit, and then a little bit more." Sanitation stations have been installed and staff are cleaning from top to bottom continually throughout the day and after the library closes each day. Demand for public computers with access to Wi-Fi and printing were once concentrated in a digital hub but now have been moved throughout the building in support of social distancing. Computer time is limited to 2 hours per-person, per-day. Demand remains high so the library is looking at additional acquisitions of Chromebooks that can be used on-site.



The soaring interior spaces are well suited for accommodating social distancing, while continuing to surround and embrace its occupants with a delightful, light filled, yet intimate experience.

Pop up service points have been adapted to encourage masked, face-to-face engagement vs. side by side interactions. Traffic and elevator flow protocols have been implemented. All checked in books and materials are placed in quarantine for 72-hours before being redistributed in the system. Due to the quarantine protocols the fascinating main lobby Bookscalator has been idled for the time being.

"Innovation is happening while actively moving through changes and modifications required in this moment," said Kapusta.



During the closures, the library system identified a need for a physical space which offers digital and literacy accessibility. Behind the scenes, the team is discussing, envisioning and sorting through ways of closing that gap. Dialogue continues around items like soft furnishings being removed, sparking conversations about future furniture acquisitions in light of clean-ability, function, as well as comfort and aesthetics.

The core design values identified in collaboration with stakeholders and the integrated approach of the Architects and Designers has created an open, welcoming accessible space worthy of a second year celebration. The Central Library has flexed and adapted in this uncharacteristic time to meet the needs of the many by evolving and will continue to do so for the years ahead.



Location: Calgary, Alberta, Canada

Designer: Snohetta & DIALOG

Website: www.calgarylibrary.ca

Millwork: Executive Millwork

Contractor: Stuart Olson

Photography: L. Heerema

Material: Solid Hemlock



Astrata Slat in Milk Oak

AN ELEMENT DEFINED

Divide a space without enclosing it...



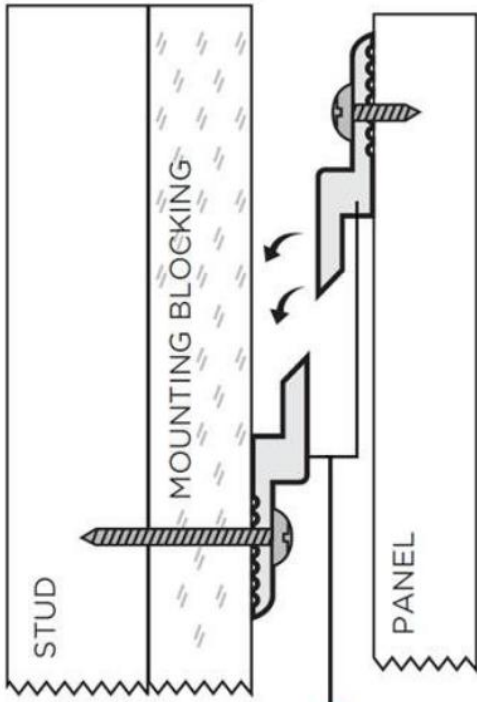
Defining a space using wood slats can create architectural interest, zone areas and contribute to acoustic buffering. Wood partitions featured in the library provide a semi-transparent barrier while connecting multiple areas and imparting visual impact.

A partition can add dimension and define a footprint in a space, providing a fixed or portable barrier that allows or blocks the passage of light.

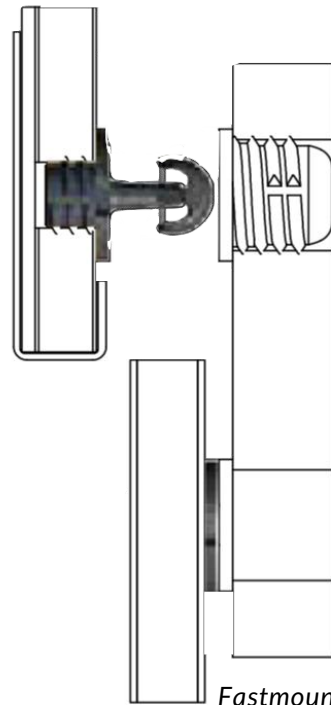
Decospan's Astrata Slats are clad in natural wood in either 3-or-4-sided veneer slats to easily incorporate this design element. The natural beauty of slatted wood veneers makes a statement creating an easy vertical transition.

Panel Mounting Solutions

Concealing fasteners seamlessly on an architectural decorative panel can pose challenges. The tried and true z-clip, or French cleat, uses gravity to hold the panel in place. The z-clip requires installation clearance above to install or remove the panel. This is especially important when stacking panels vertically using this method.



Z-Clip/French Cleat



Fastmount

When access or clearance is unavailable, a male/female clip system provides a secure and easy to remove panel, also applicable to ceilings.

Z-Clip/ French Cleat

Querkus Smoked Havana panels installed with concealed mounting methods



SURFACESCENE is a quarterly publication and is published by DesignOneSource.

DesignOneSource is the Specification Division of Hardwoods Distribution Inc. (HDI), representing products from Rugby Architectural Building Products, Hardwoods Specialty Products, and Paxton Lumber. HDI has aligned leading global suppliers and front-of-trend products, providing architects and designers with an unmatched decorative surfaces offering and comfort in the knowledge that they adhere to the highest environmental standards. DesignOneSource gives architects and designers access to design inspiration, trends, vendor coordination, training and technical product support. The DesignOneSource team is seamlessly integrated with the North American-wide material supply network of HDI's 65 distribution centers to ensure the material fulfillment of residential and commercial projects of any scale.

HDI is built around renewable and recyclable resources. As North America's largest Architectural Building Products distributor, it is active in its efforts to minimize its environmental impact in addition to providing products recognized for contributions to sustainability.

For more information on products featured in this issue,
visit www.designonesource.com
or call 866-599-1433

Design **one** Source
Where Inspiration and Design Meet Supply

FOLLOW US ON:

