

Diamond[®]

EDGE™ SERIES

DOOR STYLES & FINISHES



A woman with long brown hair, wearing a light grey cardigan over a white top and dark blue pants, stands in a bright kitchen. She is smiling and holding a small brown and white dog. In her other hand, she holds a small, fluffy blue toy. The kitchen features white cabinetry with a classic design, a white countertop, and a wooden floor. Various kitchen items like jars, a bowl of fruit, and a book are visible on the counter. The overall atmosphere is warm and inviting.

Diamond[®]

EDGE[™] SERIES

Your personal style statement.[™]

Your kitchen should reflect your life, your style, and your discerning attention to detail. Bring your ideas to life with the beautiful palette of designer-inspired color and refined collection of doors from the Diamond[®] Edge[™] Series.

KARIS Maple Sterling White Paint



DOOR STYLES

© CHERRY © QUARTERSAWN OAK © WALNUT
 (M) MAPLE (R) RUSTIC ALDER (D) MDF



Gunther
 Full Overlay
 5-Piece Drawer Front
 (C)(M)(Q)(R)(W)



Gunther
 Full Overlay
 Slab Drawer Front
 (C)(M)(Q)(R)(W)



Gunther
 Inset*
 Slab Drawer Front
 (C)(M)(Q)(R)(W)



Gunther
 Beaded Inset*
 Slab Drawer Front
 (C)(M)(Q)(R)(W)



Langley
 Full Overlay
 5-Piece Drawer Front
 (C)(M)(Q)(R)(W)



Langley
 Full Overlay
 Slab Drawer Front
 (C)(M)(Q)(R)(W)



Langley
 Inset*
 Slab Drawer Front
 (C)(M)(Q)(R)(W)



Langley
 Beaded Inset*
 Slab Drawer Front
 (C)(M)(Q)(R)(W)



Karis
 Full Overlay
 5-Piece Drawer Front
 (C)(M)(Q)(R)(W)



Karis
 Full Overlay
 Slab Drawer Front
 (C)(M)(Q)(R)(W)



Karis
 Inset*
 Slab Drawer Front
 (C)(M)(Q)(R)(W)



Karis
 Beaded Inset*
 Slab Drawer Front
 (C)(M)(Q)(R)(W)



Bryant
 Full Overlay
 5-Piece Drawer Front
 (C)(M)(Q)(R)(W)



Bryant
 Full Overlay
 Slab Drawer Front
 (C)(M)(Q)(R)(W)



Bryant
 Inset*
 Slab Drawer Front
 (C)(M)(Q)(R)(W)



Bryant
 Beaded Inset*
 Slab Drawer Front
 (C)(M)(Q)(R)(W)



DOOR STYLES

© CHERRY © QUARTERSAWN OAK © WALNUT
 (M) MAPLE (R) RUSTIC ALDER (D) MDF



Shona
Full Overlay
5-Piece Flat Drawer Front
©(M)(R)(W)



Shona
Full Overlay
5-Piece Drawer Front
©(M)(R)(W)



Shona
Full Overlay
Slab Drawer Front
©(M)(R)(W)



Shona
Inset*
Slab Drawer Front
©(M)(R)(W)



Wells
Full Overlay
5-Piece Drawer Front
©(M)(R)(W)



Wells
Full Overlay
Slab Drawer Front
©(M)(R)(W)



Davis
Full Overlay
5-Piece Drawer Front
©(M)(R)(W)



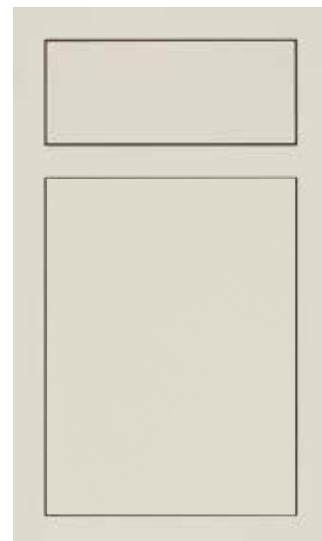
Davis
Full Overlay
Slab Drawer Front
©(M)(R)(W)



Shona
Beaded Inset*
Slab Drawer Front
©(M)(R)(W)



Trystan
Full Overlay
Slab Drawer Front
©(M)(Q)(W)(D)



Trystan
Inset
Slab Drawer Front
(D)



Trystan
Beaded Inset
Slab Drawer Front
(D)



Caldera
Full Overlay
5-Piece Drawer Front
©(M)(R)(W)



Caldera
Full Overlay
Slab Drawer Front
©(M)(R)(W)



Sumner
Full Overlay
5-Piece Drawer Front
©(M)(R)(W)

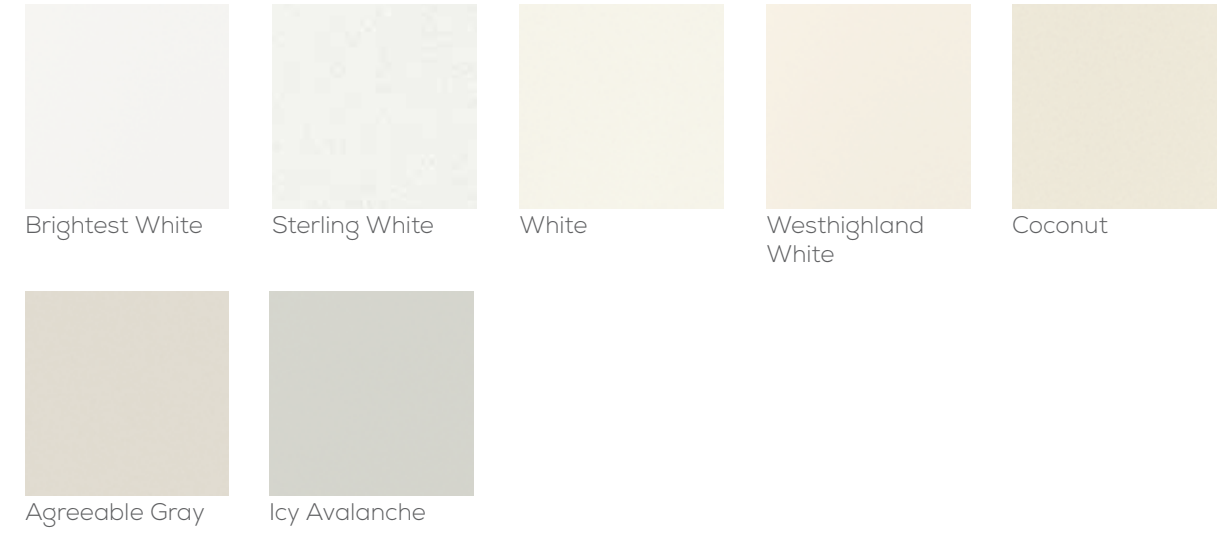
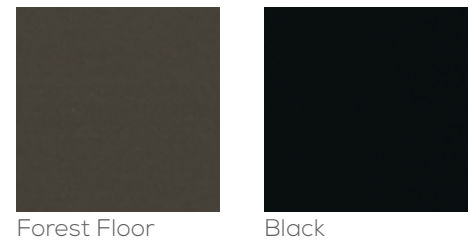
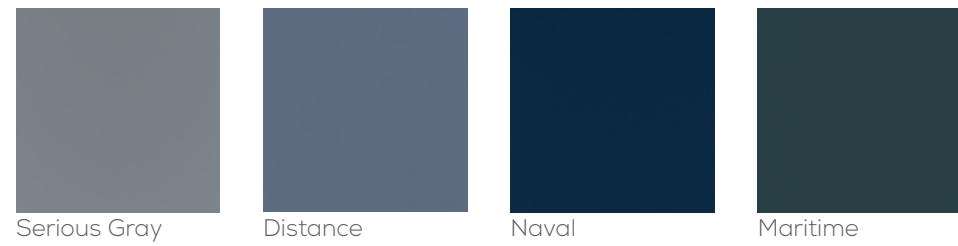
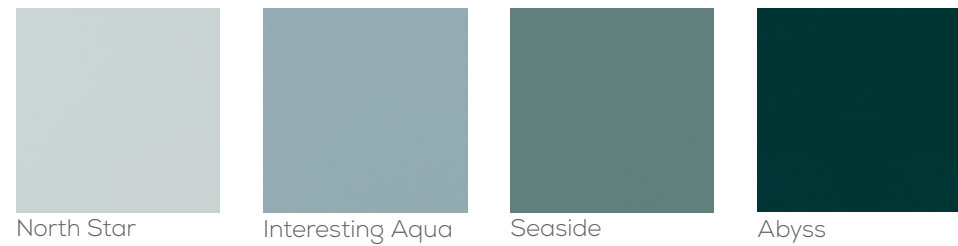
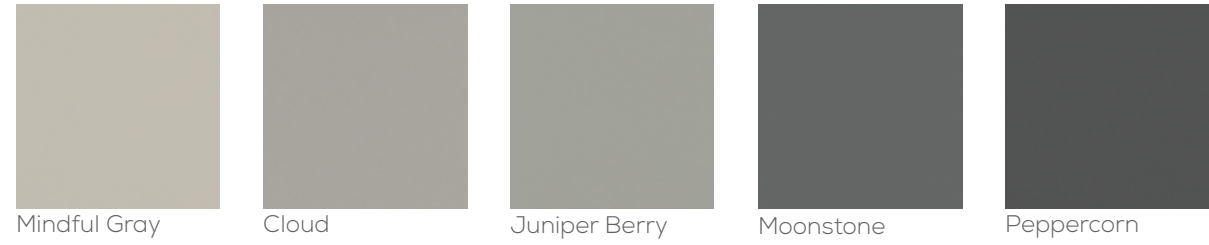


Sumner
Full Overlay
Slab Drawer Front
©(M)(R)(W)

PAINTS*

Available on Maple, MDF and Quartersawn Oak.

Ⓒ CHERRY Ⓒ QUARTERSAWN OAK Ⓜ WALNUT
Ⓜ MAPLE Ⓒ RUSTIC ALDER Ⓜ MDF



*When Maple painted finishes (Paints, Sherwin-Williams or Brushed Technique) are specified, the center panels of the selected style may be constructed of Medium Density Fiberboard (MDF). MDF provides a smoother finish when painted, and is more resistant to warping, expansion, and contraction.



SHERWIN-WILLIAMS®

With more than 2000 paint colors available from the Sherwin-Williams color palette to enhance your Maple, MDF or Quartersawn Oak door style, you'll be sure to find a color that is beyond ordinary. Layer a Penned Glaze or Brushed Finish for a true artistic interpretation. Please see your designer for details and exclusions.



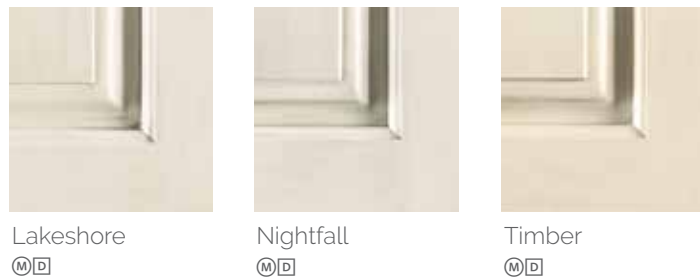
PENNEDED GLAZES FOR PAINTS*

Shown on Maple Coconut. Available on species as indicated.
In the panned glaze process, the glaze material is hand-applied to only the highlighted areas.



BRUSHED FINISHES FOR PAINTS*

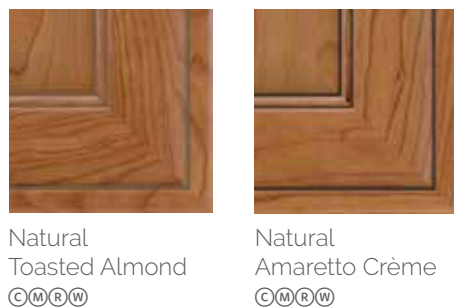
Shown on Maple Coconut, available on most paints. See your designer for details.



*When Maple painted finishes (Paints, Sherwin-Williams or Brushed Technique) are specified, the center panels of the selected style may be constructed of Medium Density Fiberboard (MDF). MDF provides a smoother finish when painted, and is more resistant to warping, expansion, and contraction.

STAINS WITH PENNEDED GLAZES

Available on species as indicated.
In the panned glaze process, the glaze material is hand-applied to only the highlighted areas.



STAINS

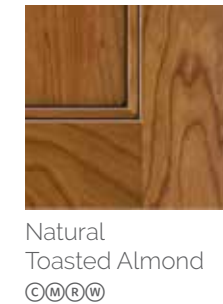
Available on species as indicated.

(C) CHERRY (Q) QUARTERSAWN OAK (W) WALNUT
(M) MAPLE (R) RUSTIC ALDER (D) MDF



STAINS WITH FLOODED GLAZES

Available on species as indicated. In the flooded glaze process, the glaze material is sprayed onto the entire cabinet door and is then wiped off everywhere except in the highlight areas.



SPECIALTY FINISHES

Available on species as indicated.

Ⓒ CHERRY Ⓖ QUARTERSAWN OAK Ⓜ WALNUT
Ⓜ MAPLE Ⓡ RUSTIC ALDER Ⓛ MDF



Dunes
ⒸⓇⓂⓌ



Sparrow
ⒸⓇⓂⓌ



Driftwood
ⒸⓂⒼⓇⓌ



Thicket
ⒸⓇⓂⓌ



Armor
Ⓒ



Balsamic Ombre
ⒸⓇⓂ



Worn Black
Ⓜ



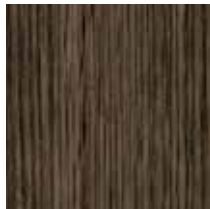
Worn Beachglass
ⓂⒸ

STAINS WITH CERUSED FINISHES

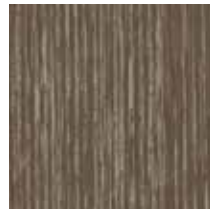
Available on species as indicated.



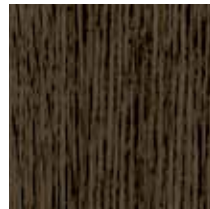
Buckskin Brindle
ⒸⓌ



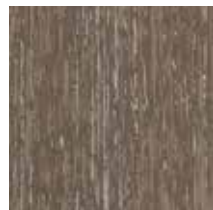
Buckskin Roan
ⒸⓌ



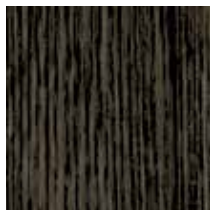
Morel Brindle
ⒸⓌ



Morel Roan
ⒸⓌ



Seal Brindle
ⒸⓌ



Seal Roan
ⒸⓌ

OUTSIDE EDGE DOOR PROFILE OPTIONS

Every Edge™ Series door style offers several outside edge profiles to tailor your look. It's amazing how seemingly small changes make such a drastic difference in the appearance of a door. From simple and straight to traditionally detailed, check which options are available on the styles you love and select the shape that suits your vision.



PROFILE #10



PROFILE #12



PROFILE #17



PROFILE #18

SHEEN OPTIONS

A choice in sheen can significantly alter the appearance of a door, especially those finished with medium to dark paints and stains where matte finishes are more noticeable. We have paired a Standard Sheen (top) with our new Matte Sheen (bottom) on this Shona Cherry Mustang door to illustrate the difference. Matte Sheen is available on all paints and stains.



Standard Sheen v. Matte Sheen

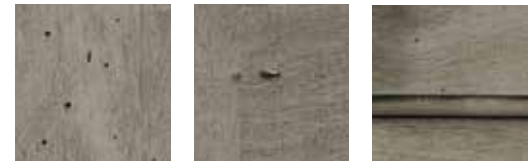
AGING TECHNIQUES

TIMEWORN

This light distressing technique features random wormholes, tiny dents and light signs of wear to mimic the appearance of imperfections similar to those found on antiques.



Wormholes Dents Wear
Shown on painted finish



Wormholes Dents Wear
Shown on stained finish



HEWVN

This subtle technique mimics finish wear that naturally develops over time, and features a continuous but light sand-through along the sharp profiles to highlight the distinctive details of each door and drawer front. Sand-through may vary in thickness around the perimeter of a single door and throughout the kitchen.



Light Sand-through
Shown on painted finish

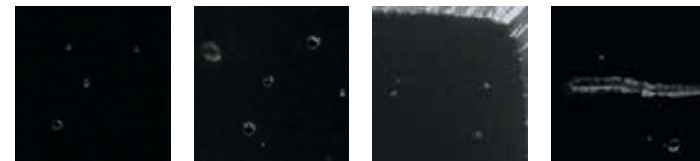


Light Sand-through
Shown on stained finish



EXTRA TIMEWORN

This more aggressive technique includes random rasped corners and edges, wormholes, mars, splits, gouges, small dings and dents for an authentically worn look.



Wormholes Dents Rasping Mars & Splits
Shown on painted finish



Wormholes Dents Rasping Mars & Splits
Shown on stained finish



EXTRA HEWVN

This more aggressive technique features burnished sand-through on corners and raised profiles along with sanding on sharp profiles to expose underlying wood in the Edge line. Unlike Hewn, Extra Hewn is a RANDOM sand-through technique varying the number of corners and raised profiles receiving burnished sand-through and the sanding of sharp profiles. As with normal aging, the worn edges will vary within individual doors and throughout the entire room.



Aggressive Sand-through
Shown on painted finish



Aggressive Sand-through
Shown on stained finish



Diamond[®]

Make your mark.[™]



EDGE[™] SERIES
Premium Semi-Custom Cabinetry



DISTINCTION[™] SERIES
Framed Semi-Custom Cabinetry



VIBE[™] SERIES
Framed Value Semi-Custom Cabinetry

Styles, product availability and construction may vary slightly from those shown in this book due to material availability and/or design evolution. Specifications are subject to change without notice. Customer service is available if your design requires verification of product availability and specifications.

Product photography and illustrations have been reproduced as accurately as printing technologies permit. To ensure highest satisfaction, we strongly recommend you view an actual sample for best color, wood grain and finish representation.

Diamond[®] has a Limited Lifetime Warranty.

For terms and conditions, please visit: <https://www.diamondcabinets.com/warranty>

Front cover image: Gunther Maple Buckskin with Agreeable Gray shelves



**National Forest
Foundation**



**Part of the
MasterBrand[®]
Family**

diamondcabinets.com
#DiamondCabinets
© 2023 MasterBrand Cabinets LLC
All rights reserved.

CENTRALIA, IL
866.755.7636

MOBERLY, MO
800.892.5850

MT. PLEASANT, IA
800.258.5809

SPRING HILL, KS
800.490.4320

Proudly
Supplied
By

