



Residential Complete™  
WALL SYSTEMS



# Build a better home. Complete Performance. Complete Solution. ResidentialComplete™ Wall Systems.

**These solutions for residential exterior walls provide incredible thermal efficiency, a complete air and water barrier, and excellent acoustical performance.**

Building codes vary from region to region. But no matter where you go, you'll notice that residential building codes are placing more emphasis on effective, energy-efficient solutions.

One significant area of focus is the building enclosure. The building enclosure is the "border" that separates the outside environment from the conditioned space of the home. To create an optimal building enclosure, there are 4 major factors that need to be addressed:

- Air Intrusion
- Vapor Intrusion
- Water Intrusion
- Thermal Performance

The Owens Corning™ ResidentialComplete™ Wall Systems were each designed to help address a specific challenge in creating the building enclosure. We will show you examples of how to combine them for some common wall solutions, but you can also use these products to create your own customized system that is unique to your building situation and local code requirements.



**ResidentialComplete™ Wall Systems** are approved for use in all 8 climate zones, while still customizable to work with your local building codes and needs. See the ResidentialComplete™ Wall Systems Builder's Guide for multiple wall options, wall design details, code suggestions and information.

Visit [ResidentialComplete.OwensCorning.com](http://ResidentialComplete.OwensCorning.com) to view the ResidentialComplete™ Wall Systems Builder's Guide eBook or scan the QR code to download the app.

## Wood Stud ResidentialComplete® Wall System

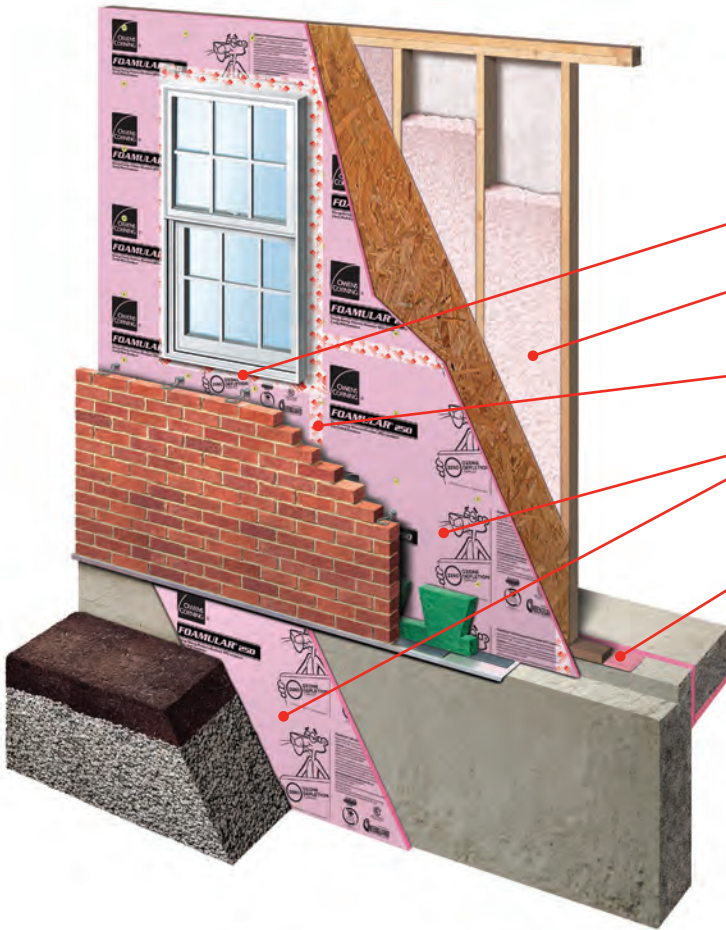
FlashSealR® Foam Flashing Tape

PROPINK® L77 Loosefill Insulation  
or EcoTouch® PINK® Fiberglas™

JointSealR® Foam Joint Tape

FOAMULAR® Extruded Polystyrene  
(XPS) Rigid Foam Insulation

FoamSealR™ Sill Plate Gasket



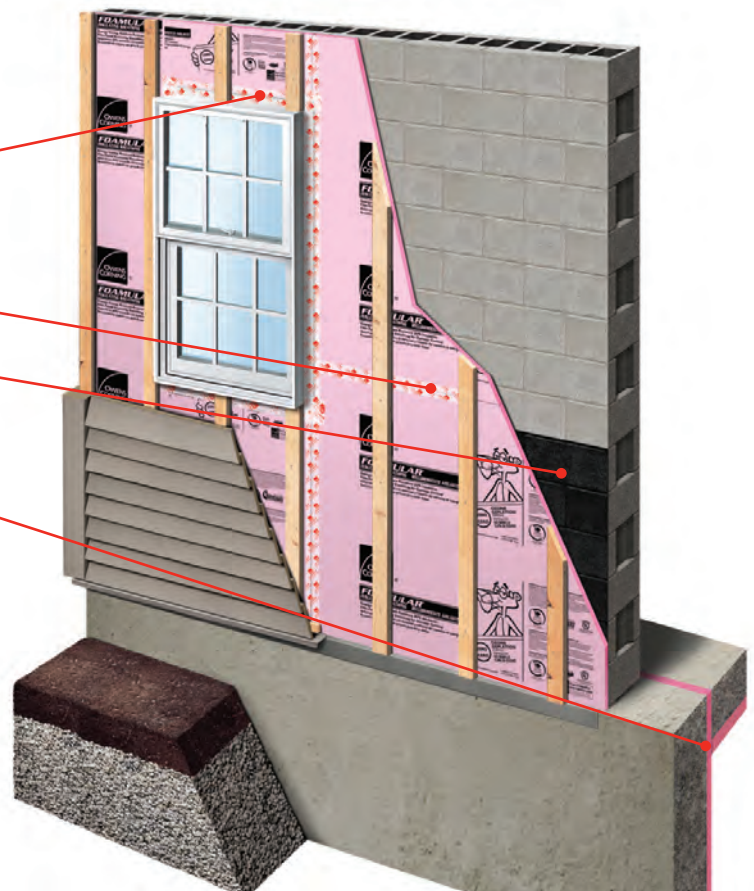
## Concrete Masonry Unit (CMU) ResidentialComplete® Wall System

FlashSealR® Foam Flashing Tape

JointSealR® Foam Joint Tape

Optional Waterproofing Membrane

FOAMULAR® Extruded Polystyrene  
(XPS) Rigid Foam Insulation





- Provides a layer of continuous insulation to help prevent thermal bridging
  - Exceptional moisture resistance
  - Available in a variety of sizes, thicknesses, edges, and compressive strengths
  - Features a limited lifetime warranty\*
  - Easy to use
  - 20% certified recycled content
  - GREENGUARD Gold Certified
- \*See actual warranty for complete details, limitations and requirements

**FOAMULAR® Extruded Polystyrene (XPS) Rigid Foam Insulation**



- Great for insulating walls, attics, cathedral ceilings and floors
- Provides the highest yield of any loosefill insulation currently on the market
- Non-combustible and non-corrosive
- Non-conductive to moisture retention
- Formaldehyde free
- Third party certifies 50% recycled content

**PROPINK® L77 Loosefill Insulation**



- Helps reduce heating and cooling costs, and sound transmission
- Great for insulating walls and ceilings
- Available plain or faced and with R-values from R-11 to R-49
- The only fiberglass insulation in the USDA BioPreferred® Catalog
- Verified formaldehyde-free
- GREENGUARD Gold certified
- SCS certified to have a minimum of 50% recycled content

**EcoTouch® PINK® Fiberglas™ Insulation with PureFiber® Technology**



- Reduces air leakage/infiltration
- Dries in 20 minutes
- Can be applied at temperatures from 20°F to 110°F
- GREENGUARD Gold certified

**EnergyComplete® Insulation and Air Sealing System**



- Use to create an air/water barrier at the joints of Foamular® XPS rigid foam insulation
- Seal doesn't break as it flexes and stretches to move with the building
- Performs at temperatures -40°F to 165°F
- Split-release liner for easy installation on corners

**JointSealR® Foam Joint Tape**



- Used to seal joints and penetrations in a building envelope
- Use to create an air/water barrier around window and door openings
- Seal doesn't break as it flexes and stretches to move with the building
- Seals around nails and staples
- Performs at temperatures -40°F to 165°F
- Split-release liner for easy installation around window jambs

**FlashSealR® Foam Flashing Tape**



- Seals out drafts/air between the sill plate and foundation wall
- Durable and easy to install
- Helps resist moisture movement from the foundation into the wooden structure

**FoamSealR® Sill Plate Gasket**



**1-800-GET-PINK®**  
**[www.owenscorningcommercial.com](http://www.owenscorningcommercial.com)**

FOR MORE INFORMATION ON THE OWENS CORNING FAMILY OF BUILDING PRODUCTS,  
CONTACT YOUR OWENS CORNING DEALER, CALL 1-800-GET-PINK® OR ACCESS OUR  
WEB SITES: WWW.FOAMULAR.COM, WWW.OWENSCORNINGCOMMERCIAL.COM  
AND WWW.COMMERCIAL.OWENSCORNING.COM/RESIDENTIALCOMPLETE

**Disclaimer of Liability**

Technical information contained herein is furnished without charge or obligation and is given and accepted at recipient's sole risk. Because conditions of use may vary and are beyond our control, Owens Corning makes no representation about, and is not responsible or liable for the accuracy or reliability of data associated with particular uses of any product described herein. Nothing contained in this bulletin shall be considered a recommendation.

All trademarks are the property of their respective owners.



**OWENS CORNING FOAM INSULATION, LLC**  
ONE OWENS CORNING PARKWAY  
TOLEDO, OHIO, USA 43659

**1-800-GET-PINK®**  
[www.owenscorningcommercial.com](http://www.owenscorningcommercial.com)

Pub. No. 10017482-B. Printed in U.S.A. November 2014.  
THE PINK PANTHER™ & © 1964–2014 Metro-Goldwyn-Mayer Studios Inc. All Rights Reserved. The color PINK is a registered trademark of Owens Corning. © 2014 Owens Corning. All Rights Reserved.



CENTRALIA, IL  
866.755.7636

MOBERLY, MO  
800.892.5850

MT. PLEASANT, IA  
800.258.5809

SPRING HILL, KS  
800.490.4320

Proudly  
Supplied  
By



Visit our website at [www.midambuilding.com](http://www.midambuilding.com)