

PHILLIPS

MANUFACTURING CO.

Engineered to Perform

METAL BEADS & TRIMS

VINYL BEADS & TRIMS

PAPER FACED BEADS & TRIMS

METAL CHANNELS & INTERIOR FRAMING

INTERIOR FRAMING

FIRE RATED ASSEMBLIES

STUCCO, VENEER & PLASTER BEADS & TRIMS

METAL LATH

ROOFING METALS & SIDING ACCESSORIES

PHILLIPSMFG.COM
800.822.5055



- About Us -

Phillips Manufacturing Co. is a national single source manufacturer for all drywall finishing accessories including beads, trims, channels and framing components, lath and stucco accessories, roofing metals and siding accessories. We stand above the competition as specialists in beads, trims and accessories focusing on continual quality improvements and innovations providing the highest quality products. We are a privately owned and operated company proudly serving the entire nation with our extensive product lines through our many distribution channels.

- Our Mission -

"Lead the industry in delivering innovative products and services that add value to our customers and build their long-term success."

- Our Guarantee -

Phillips stands behind our product quality 100%. Our material and fabrication standards are the highest in the industry. Phillips products are manufactured by an organization devoted to customer satisfaction.



Headquarters and Plant / Omaha, Nebraska

THE PHILLIPS ADVANTAGE



Innovation and Quality: Phillips engineering, research and development, and production teams are driven towards value added products and services.



Product Value: Phillips delivers innovative products with distinct features and benefits at competitive prices for a strong competitive advantage.



Service: Phillips employs highly qualified and knowledgeable sales and sales support teams to ensure excellent customer service. We provide efficient national distribution with manufacturing and operating space of nearly 500,000 square feet. Customer-satisfaction survey results rated Phillips above the competition as a very strong supplier by current customers, excelling in understanding your needs, timely responses, resolving complaints and accessibility of service representatives.



Relationships: We understand the importance of the customer and recognize that success is achieved through partnerships and loyalty.



Brand Loyalty: Our national presence and well-recognized Phillips brand names are known throughout the industry.



CORPORATE OFFICE

4949 S. 30th Street
Omaha, NE 68107
402.339.3800 Office
402.339.0772 Fax

PHOENIX OFFICE & WAREHOUSE

111 E. Maricopa FWY
Phoenix, AZ 85034
602.253.9320 Office
602-253-3199 Fax

NILES PLANT

504 Walnut Street
Niles, OH 44446
330.652.4335 Office
800.252.7692 Fax

TAMPA PLANT

8419 Sabal Industrial BLVD
Tampa, FL 33619
813-319-0931 Office
813.319.0933 Fax

SACRAMENTO WAREHOUSE

2934 Ramo St., Suite 120
West Sacramento, CA 95691
916.620.7129 Office
916.246.6244 Fax

UMATILLA PLANT

38051 Florida 19
Umatilla, FL 32784
352.669.8204 Office
352.669.1571 Fax



- Maintaining Excellence -

Phillips products are manufactured by the most highly developed processes available, using in-house expertise as our most valuable resource.

Our experienced technicians and engineers are engaged in continuous analysis of our manufacturing and quality control processes to ensure maximum quality standards. The feedback received from our customers is of immeasurable value in this on-going effort.

Customer service is an important reason why customers call on us time and time again to meet the needs of their construction project. We respond quickly and effectively to our customers' requests, regardless of the nature.





-QUICK REFERENCE -

LEED® Certification

Phillips Manufacturing Co. understands the importance of recycling and manufactures all of its products utilizing materials with recycled content. Phillips Manufacturing's products contain a minimum of **30% total recycled content** (25% post-consumer and 5% pre-consumer). *To request a project specific LEED® letter, please visit our website at PHILLIPSmfg.com*

» ADDITIONAL INFORMATION ALSO AVAILABLE AVAILABLE AT

PHILLIPSmfg.com

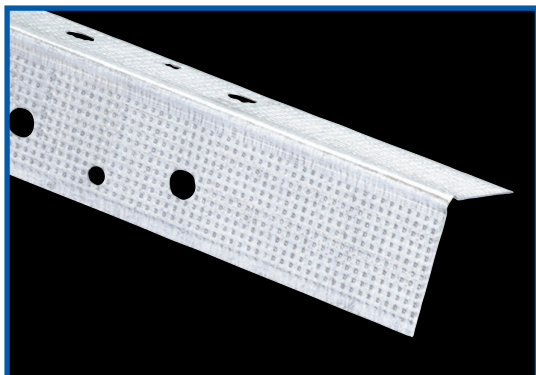
Visit EZSubmittal.phillipsMFG.com to use the free and mobile friendly tool to receive your specifications, installation recommendations and SDS sheets.

Table of Contents

Metal Beads & Trims	6
Metal Corner Beads	6
Metal Trims and Finishing Products	11
Vinyl Beads & Trims	12
Vinyl Corner Beads	12
Bullnose Corner and Transition Caps	17
Vinyl Trims and Finishing Products	19
Paper Faced Beads & Trims	21
Paper Faced Corner Beads	21
Paper Faced Trims	27
Metal Channels & Interior Framing	28
Channels	28
Flat Strap or Flat Stock	32
Fire Rated Assemblies	33
Shaftwall/Stairwell	33
Area Separation Wall	33
Stucco, Veneer & Plaster Beads & Trims	34
Stucco and Plaster Casing Beads	34
Stucco and Plaster Control Joints	35
Veneer Beads and Trims	37
Stucco Screeds and Exterior Finishing Products	37
Metal Lath	38
Roofing Metals & Siding Accessories	40
Index	46

METAL CORNER BEADS

PHILLIPS UNMATCHED SELECTION OF CORNER BEAD



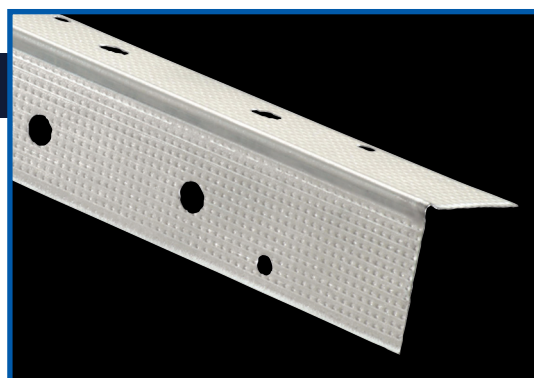
PART NUMBER: CBRHDG

Everlast® CORNER BEAD

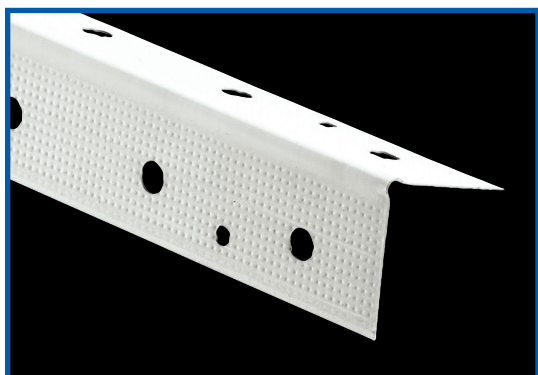
Phillips performance proven Everlast® corner bead features a hot-dipped galvanized steel surface coating providing excellent rust protection. Phillips corner beads are easily installed using standard industry practice with drywall nails, staples, screws or clinching tool. Phillips corner beads also feature deeply knurled mud anchors to further ensure perfect mud adhesion.

klinchSTIK®

Phillips is the exclusive producer of klinchSTIK® metal bead. This corner bead features a grey galvanized surface coating and deeply knurled mud anchors for perfect mud adhesion. Phillips corner beads are easily installed using standard industry practice with drywall nails, staples, screws or clinching tool. Phillips klinchSTIK® is the ideal product for quick and easy installation with a clinching tool.



PART NUMBER: CBKEGB



PART NUMBER: CBRSF

ShadowFree® CORNER BEAD

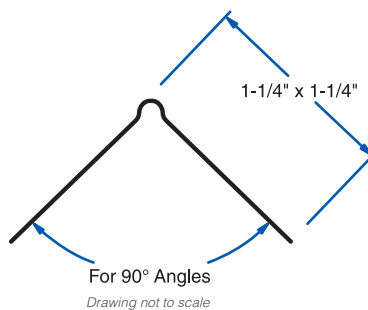
Phillips ShadowFree® corner bead is the perfect color and texture for a superior finish. This product features a hot-dipped galvanized steel surface coating plus is primed for excellent corrosion prevention and to ensure quality mud and paint adhesion. Phillips exclusive ShadowFree® surface coating helps prevent shadowing and cuts down on finishing time.

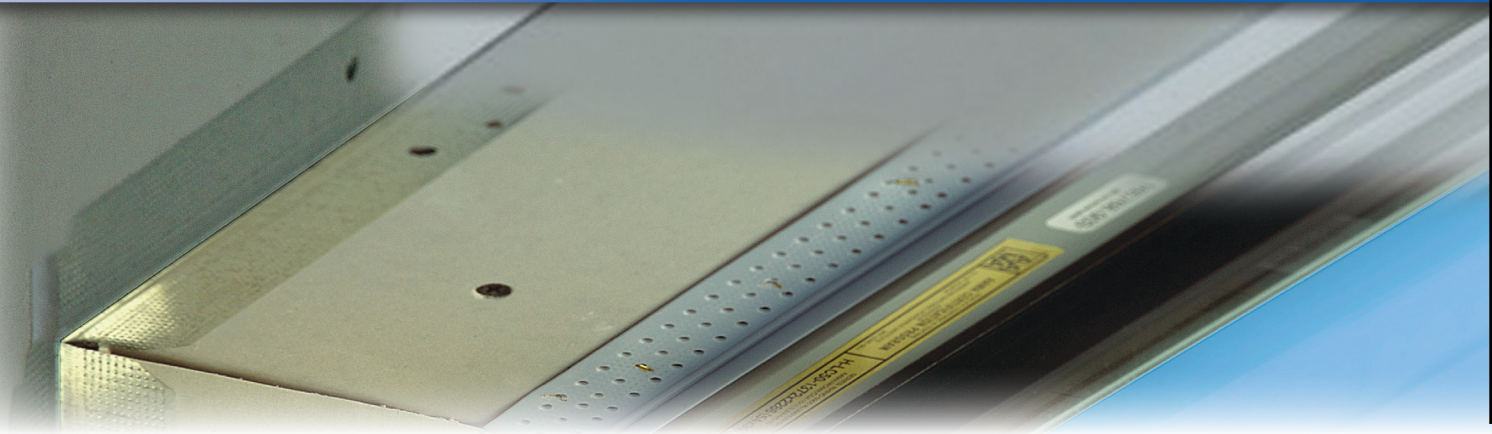
SIZES AND PACKAGING

Corner Bead

Length	Pieces Per Carton	Cartons Per Pallet	Feet Per Carton
7'	72	48	504
8'	63	48	504
9'	56	48	504
10'	50	48	500
12'	42	48	504

UPC labeling available upon request





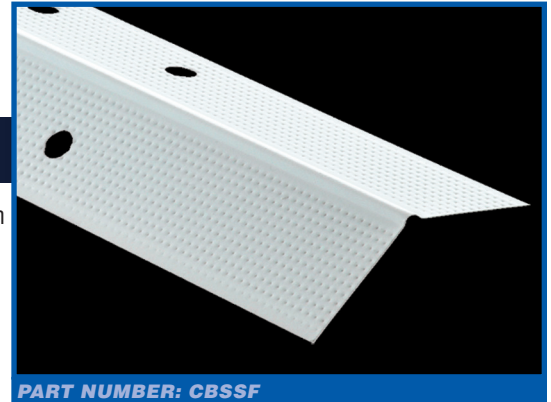
PART NUMBER: CBSHDG

Everlast® SPLAY CORNER BEAD

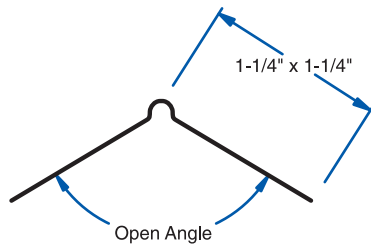
Phillips Everlast® splay corner bead creates a time-saving, smooth, consistent finish for open angles exceeding 120°. Everlast® splay features Phillips exclusive hot-dipped galvanized surface coating which provides excellent rust protection. Install using standard industry practice with nails, staples, screws or clinching tool and finish with joint compound for a high-quality professional finish. Like all Phillips corner beads, this bead features deeply knurled mud anchors to further ensure perfect mud adhesion.

ShadowFree® SPLAY

Phillips ShadowFree® splay corner bead is the perfect color and texture for a superior finish on open angles exceeding 120°. This product is primed over a hot-dipped galvanized steel surface coating for excellent corrosion prevention and to ensure quality mud and paint adhesion. Phillips exclusive ShadowFree® surface coating helps prevent shadowing and cuts down on finishing time.



PART NUMBER: CBSSF



Drawing not to scale

SIZES AND PACKAGING

Splay Corner Bead

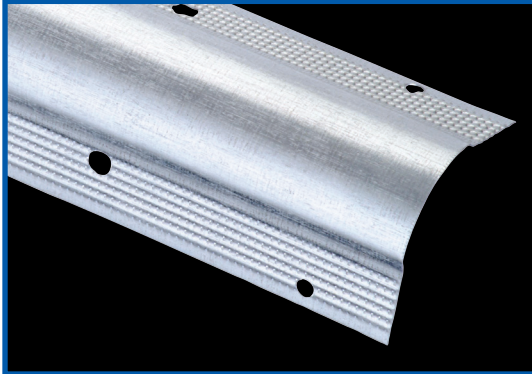
Length	Pieces Per Carton	Cartons Per Pallet	Feet Per Carton
8'	63	48	504
9'	56	48	504
10'	50	48	500

UPC labeling available upon request

Phillips Metal Beads & Trims work great with our extensive line of Corner & Transition Caps. See pages 18-19 for more details.



BULLNOSE METAL CORNER BEADS



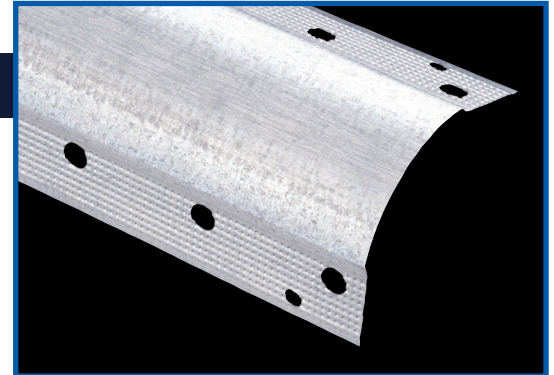
PART NUMBER: BN3HDG

3/4" Everlast® BULLNOSE

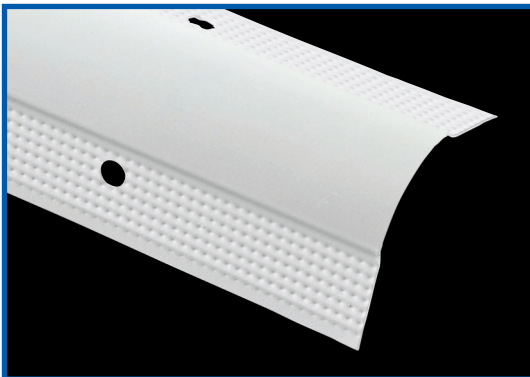
Phillips performance proven Everlast® 3/4" bullnose corner bead is used for a smooth, rounded finish on exposed edges of wallboard. Bullnose corner beads are a great way to finish off a room elegantly. This product provides superior corrosion protection and mud adhesion. This corner bead features a hot-dipped galvanized surface coating which provides the finest rust protection. Flanges feature deeply knurled mud anchors to further ensure perfect mud adhesion. Phillips corner beads are easily installed using standard industry practice with drywall nails, staples, screws or clinching tool.

1-1/2" Everlast® BULLNOSE

Phillips performance proven Everlast® 1-1/2" bullnose corner bead provides a more pronounced round corner creating a modern look at exposed edges of wallboard. This product also provides superior corrosion protection and mud adhesion. Phillips Everlast® products feature a hot-dipped galvanized surface coating which provides the finest rust protection. Easily install using standard industry practice with drywall nails, staples, screws or clinching tool. The flanges of Phillips bullnose corner beads feature deeply knurled mud anchors to further ensure perfect mud adhesion.



PART NUMBER: BN5HDG



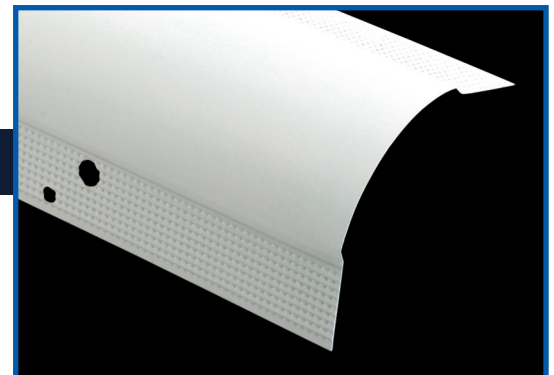
PART NUMBER: BN3SF

3/4" ShadowFree® BULLNOSE

Expand your market with the perfect color and texture for a superior finish. This product is primed over a hot-dipped galvanized steel surface coating for excellent corrosion prevention and to ensure quality mud and paint adhesion. Phillips exclusive ShadowFree® surface coating prevents shadowing and cuts down on finishing time. Phillips 3/4" bullnose corner beads provide a smooth, rounded finish on exposed edges of wallboard finishing off a room elegantly.

1-1/2" ShadowFree® BULLNOSE

Expand your market with the perfect color and texture for a superior finish. This product is primed over a hot-dipped galvanized steel surface coating for excellent corrosion prevention and to ensure quality mud and paint adhesion. Phillips exclusive ShadowFree® surface coating prevents shadowing and cuts down on finishing time. Phillips 1-1/2" bullnose corner beads provide a more pronounced round corner creating a modern look.



PART NUMBER: BN5SF

SIZES AND PACKAGING

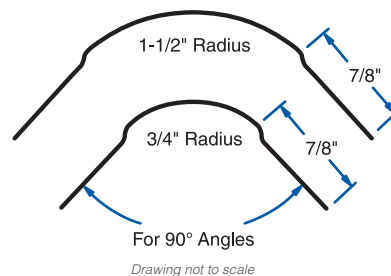
3/4" Bullnose

Length	Pieces Per Carton	Cartons Per Pallet	Feet Per Carton
7'	58	49	406
8'	50	40	400
9'	45	40	405
10'	40	40	400
12'	33	40	396

1-1/2" Bullnose

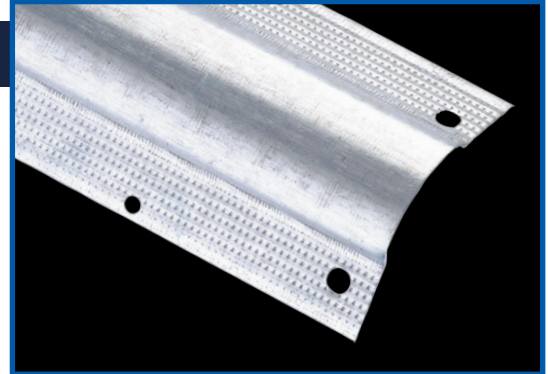
10'	20	40	200
-----	----	----	-----

UPC labeling available upon request

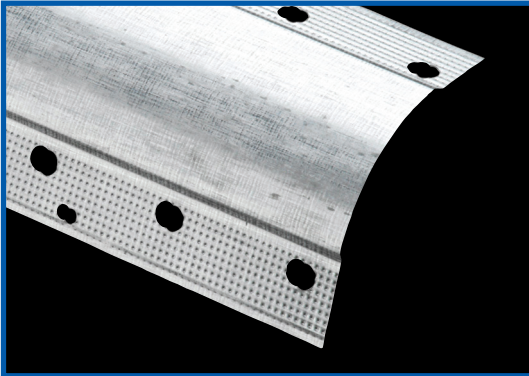


3/4" Everlast® BULLNOSE SPLAY

Phillips performance proven Everlast® 3/4" bullnose splay corner bead is used for a smooth, rounded finish on angles exceeding 120°. Bullnose splay corner beads are a great way to finish off a room elegantly. Phillips Everlast® products feature a hot-dipped galvanized surface coating which provides the finest rust protection. Easily install using standard industry practice with drywall nails, staples, screws or clinching tool. The flanges of Phillips bullnose corner beads feature deeply knurled mud anchors to further ensure perfect mud adhesion.



PART NUMBER: BS3HDG



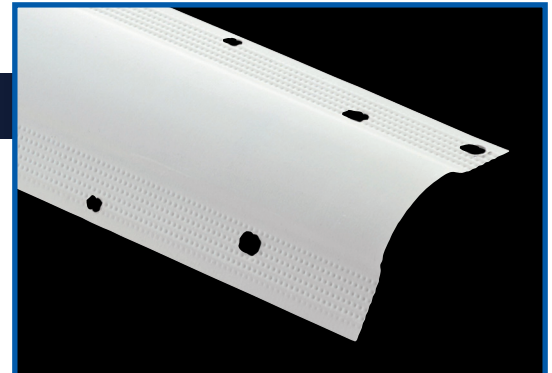
PART NUMBER: BS5HDG

1-1/2" Everlast® BULLNOSE SPLAY

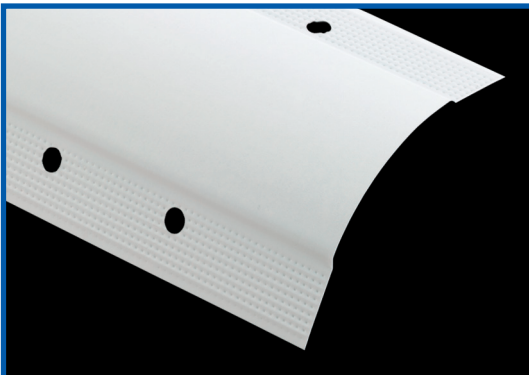
Phillips performance proven Everlast® 1-1/2" bullnose splay corner bead provides a more pronounced round corner creating a modern look on angles exceeding 120° with its larger bullnose radius. This product also provides superior corrosion protection and mud adhesion. This corner bead features a hot-dipped galvanized surface coating which provides the finest rust protection. Easily install using standard industry practice with drywall nails, staples, screws or clinching tool. The flanges of Phillips bullnose corner beads feature deeply knurled mud anchors to further ensure perfect mud adhesion.

3/4" ShadowFree® BULLNOSE SPLAY

Phillips 3/4" ShadowFree® bullnose splay corner bead is the perfect color and texture for a superior finish on angles exceeding 120°. This product is primed over a hot-dipped galvanized steel surface coating for excellent corrosion prevention and to ensure quality mud and paint adhesion. Phillips exclusive ShadowFree® surface coating prevents shadowing and cuts down on finishing time.



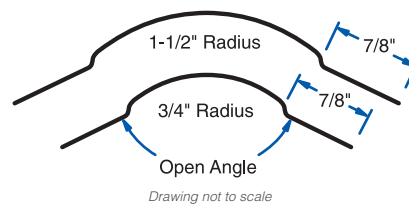
PART NUMBER: BS3SF



PART NUMBER: BS5SF

1-1/2" ShadowFree® BULLNOSE SPLAY

Phillips 1-1/2" ShadowFree® bullnose splay is the perfect color and texture for a superior finish on angles exceeding 120°. The larger bullnose radius provides a more pronounced corner creating a more modern look. This product is primed over a hot-dipped galvanized steel surface coating for excellent corrosion prevention and to ensure quality mud and paint adhesion. Phillips exclusive ShadowFree® surface coating prevents shadowing and cuts down on finishing time.



SIZES AND PACKAGING

3/4" Bullnose Splay

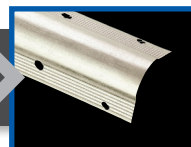
Length	Pieces Per Carton	Cartons Per Pallet	Feet Per Carton
7'	58	40	406
8'	50	40	400
9'	45	40	405
10'	40	40	400
12'	33	40	396

1-1/2" Bullnose Splay

10'	20	40	200
-----	----	----	-----

UPC labeling available upon request

METAL BULLNOSE ALSO AVAILABLE IN EGB, CONTACT YOUR REP FOR DETAILS AT 800.822.5055



BULLNOSE METAL CORNER BEADS



3/4" Bullnose Kerf

PART NUMBER: BK3HDG

3/4" & 1-1/2" BULLNOSE KERF

Phillips Bullnose Kerf metal has a unique shortened back flange allowing for insertion into grooved door jambs and window trims. This product is always a great fit and provides the smooth, round appearance associated with bullnose trims. This easy-to-install product is considered by many an excellent alternative to Bullnose J-Round. Bullnose Kerf is available in both 3/4" (BK3HDG) radius and 1-1/2" (BK5HDG) radius. The 1-1/2" provides an even rounder appearance adding a modern look to rooms. Phillips offers Bullnose Kerf metals with galvanized and ShadowFree® surface coatings (BK3SF, BK5SF); ask your sales representative for more information.



1-1/2" Bullnose Kerf

PART NUMBER: BK5HDG

SIZES AND PACKAGING

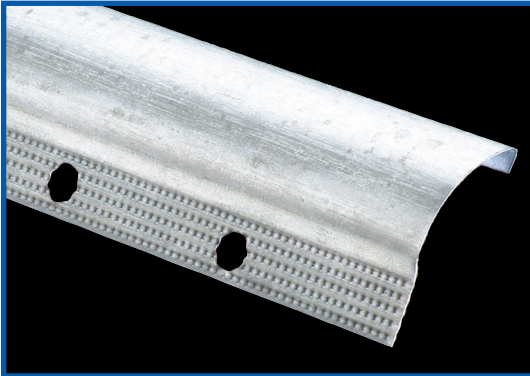
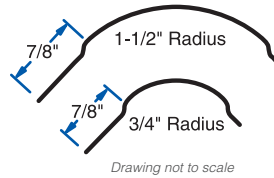
3/4" Bullnose Kerf Metal

Length	Pieces Per Carton	Cartons Per Pallet	Feet Per Carton
7'	58	40	406
8'	50	40	400
9'	45	40	405
10'	40	40	400

1-1/2" Bullnose Kerf Metal

Length	Pieces Per Carton	Cartons Per Pallet	Feet Per Carton
7'	28	40	196
8'	24	40	192
9'	22	40	198
10'	20	40	200

UPC labeling available upon request



PART NUMBER: SEE TEXT

BULLNOSE J-ROUND

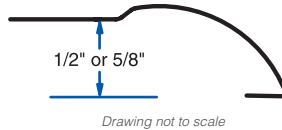
Phillips Bullnose J-Round is an easily installed corner bead ideal for providing a rounded edge around door and window jambs. This product is perfect to use with non-kerfed door jambs. The Bullnose J-Round has a shortened back flange that comes in handy if encasing the drywall is not desired or not available. This perfectly complementing corner bead is used by many as a trim. Bullnose J-Round has a 3/4" radius and is available in both 1/2" (BJ5HDG) and 5/8" (BJ6HDG) widths. Phillips offers this product with galvanized and ShadowFree® surface coatings (BJ5SF, BJ6SF).

SIZES AND PACKAGING

Bullnose J-Round

Length	Pieces Per Carton	Cartons Per Pallet	Feet Per Carton
7'	30	40	210
8'	30	40	240
9'	30	40	270
10'	30	40	300

UPC labeling available upon request



BULLNOSE DOOR & WINDOW

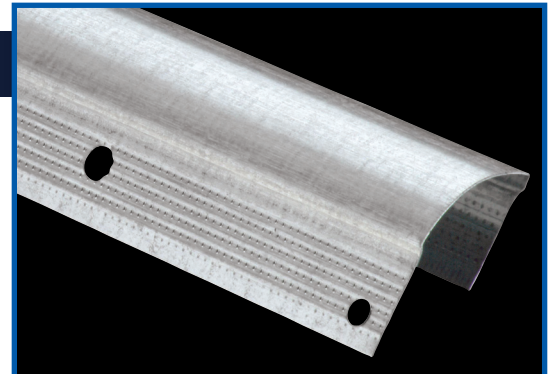
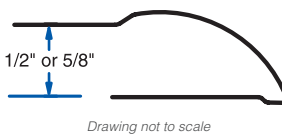
Phillips Bullnose Door & Window provides a strong metal reinforcement at doors and windows and is used by many as a trim. This easy-to-install corner bead provides a rounded edge at drywall terminations. This product has a 3/4" radius, and is available in both 1/2" (BD5HDG) and 5/8" (BD6HDG) widths. Phillips offers this product with galvanized and ShadowFree® surface coatings (BD5SF, BD6SF).

SIZES AND PACKAGING

Bullnose Door & Window

Length	Pieces Per Carton	Cartons Per Pallet	Feet Per Carton
7'	20	40	140
8'	20	40	160
9'	20	40	180
10'	20	40	200

UPC labeling available upon request



PART NUMBER: SEE TEXT

L-200 TRIM

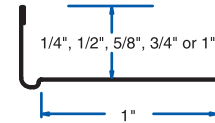
Phillips L-200 trim is a sturdy, steel casing product and a mudable trim. This product provides maximum protection and a professionally finished wallboard edge at window and door jambs. L-200 trim can also be applied where wallboard abuts different surfaces such as suspended ceilings, plaster, beams, masonry and concrete. This product is easily installed to the framing or jamb using standard industry practice. Some consider the L-200 easier to install because the back flange is eliminated. Installation is complete with application of joint compound to the front side for a smooth, ready-to-paint surface. Phillips offers the L-200 in 1/4" (LT2), 1/2" (LT5), 5/8" (LT6), 3/4" (LT7) and 1" (LT1). Available in grey galvanized (EGB) surface coating.

SIZES AND PACKAGING			
L-200 Trim (1/4", 1/2", 5/8", 3/4" & 1")			
Length	Pieces Per Carton	Cartons Per Pallet	Feet Per Carton
8'	63	48	504
10'	50	48	500

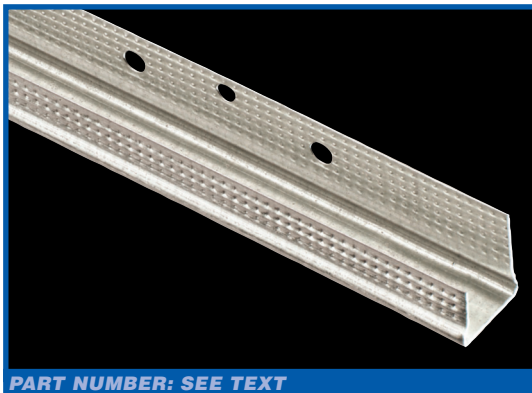
UPC labeling available upon request



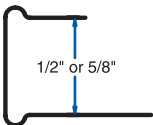
PART NUMBER: SEE TEXT



Drawing not to scale



PART NUMBER: SEE TEXT



Drawing not to scale

L-200 TRIM

Phillips J-400 trim is an economical steel channel providing edge protection around doors and windows or any partition junction openings. Hemmed edges allow for quick installation and no joint compound is required for finishing. Phillips provides J-400 trim in both 1/2" (JT5) and 5/8" (JT6). Available in hot-dipped galvanized (HDG) and grey galvanized (EGB) surface coatings.

SIZES AND PACKAGING			
J-400 Trim (1/2" & 5/8")			
Length	Pieces Per Carton	Cartons Per Pallet	Feet Per Carton
8'	63	48	504
10'	50	49	500

UPC labeling available upon request

U-200 TRIM

Phillips U-200 trim is a sturdy, channel-type steel casing product and a mudable trim. This product provides maximum protection and a professionally finished wallboard edge at window and door jambs. Phillips U-200 trim can also be applied where wallboard abuts different surfaces such as suspended ceilings, plaster, beams, masonry and concrete. This product is easily installed to the framing or jamb using standard industry practice. Installation is complete with application of joint compound to the front side for a smooth, ready-to-paint surface. Phillips offers the U-200 in both 1/2" (UT5) and 5/8" (UT6). Available in grey galvanized (EGB) surface coating.

SIZES AND PACKAGING

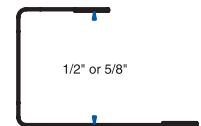
U-200 Trim (1/2" & 5/8")

Length	Pieces Per Carton	Cartons Per Pallet	Feet Per Carton
8'	63	48	504
10'	50	49	500

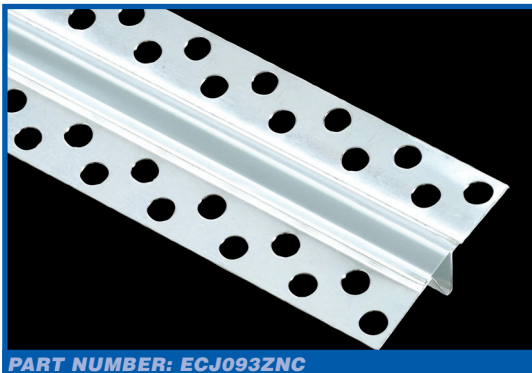
UPC labeling available upon request



PART NUMBER: SEE TEXT



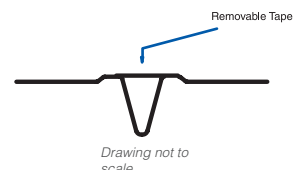
Drawing not to scale



PART NUMBER: ECJ093ZNC

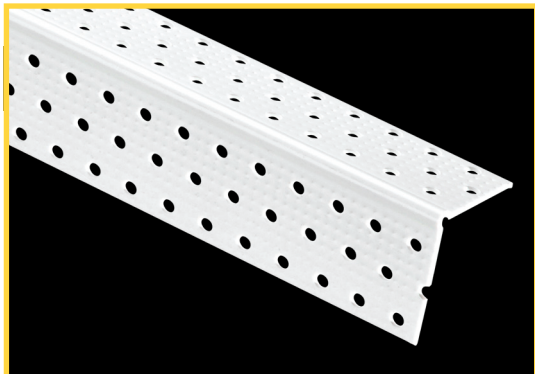
093 EXPANSION CONTROL JOINT

Phillips 093 zinc expansion control joints are manufactured from the highest quality solid zinc coil stock for superior corrosion resistance. An excellent product for interior or exterior applications, Phillips 093 expansion control joints relieve stresses of expansion and contraction across ceilings and wall areas. The opening is protected by plastic tape which can be removed after joint compound or plaster has been applied. This product fits standard 1/4" openings.



Drawing not to scale

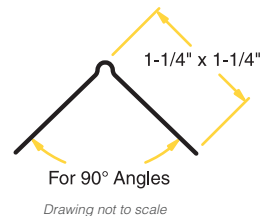
VINYL CORNER BEADS



PART NUMBER: CBRVYL

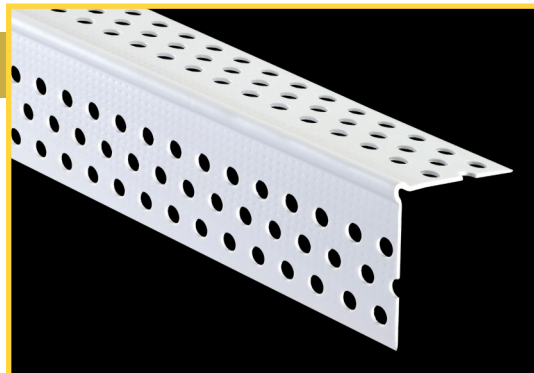
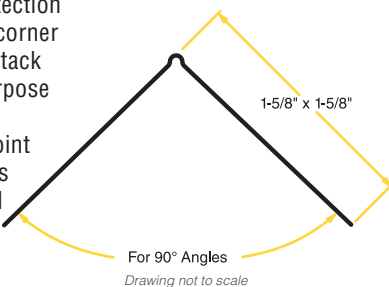
VINYL CORNER BEAD

Phillips gripSTIK® corner bead provides a rigid protection for the exposed edges of wallboard. This easy-to-install 90° corner support can be nailed, stapled or installed with Phillips gripSTIK® multipurpose high-tack spray adhesive (see page 20 for product details). Flanges feature many perforations and deeply knurled mud anchors for excellent joint compound adhesion. The entire product is specially textured to enhance paint and mud adhesion. The standard flange length for this product is 1-1/4".

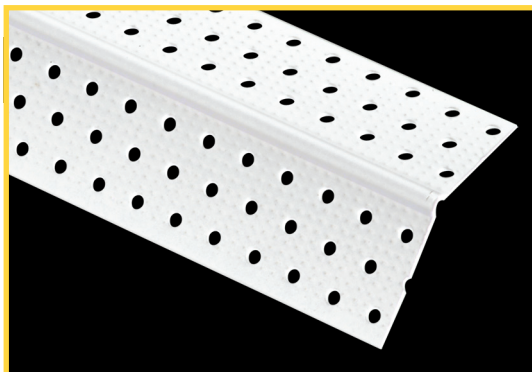


EXTRA WIDE VINYL CORNER BEAD

Phillips gripSTIK® extra wide corner bead provides rigid protection for the exposed edges of wallboard. This easy to install 90° corner support can be nailed, stapled or installed along with a high-tack multipurpose spray adhesive (try Phillips gripSTIK® multipurpose high-tack, web-based spray adhesive). Flanges feature many perforations and deeply knurled mud anchors for excellent joint compound adhesion. The extra wide flange length of 1-5/8" is ideal for those times a longer flange is needed or desired. All Phillips gripSTIK® vinyl beads and trims work great for both drywall and interior veneer applications.



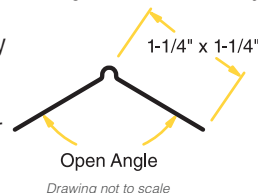
PART NUMBER: CBWVYL



PART NUMBER: CBSVYL

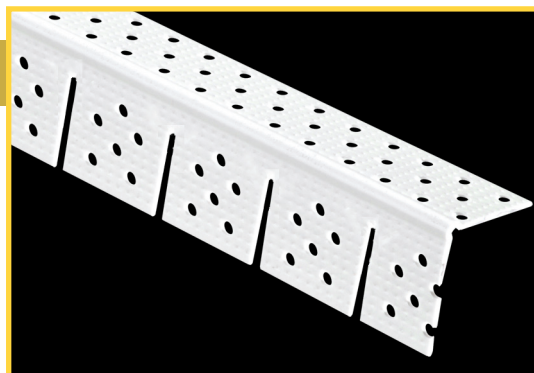
SPLAY CORNER BEAD

Phillips gripSTIK® splay bead offers a flush fit on a variety of open angle applications exceeding 120°, making this a very versatile product. Easily install using standard industry practice with nails, staples or multipurpose high-tack spray adhesive (see page 20 for product details). Flanges feature many perforations and deeply knurled mud anchors for excellent joint compound adhesion. The entire product is specially textured to enhance paint and mud adhesion. The standard flange length for this product is 1-1/4".



MAX-Flex® ARCHWAY

Phillips gripSTIK® MAX-Flex® archway bead is designed for maximum flexibility as our unique design allows it to conform to almost any radius. Phillips unique MAX-Flex® cut features "Y" shaped slits on the notched flange allowing for superior flexibility without kinking. This product features many perforations, deeply knurled mud anchors and the entire product is specially textured which all greatly enhance paint and mud adhesion. The standard flange length for this product is 1-1/4". Phillips gripSTIK® multipurpose spray adhesive eases installation (see page 20 for details).



PART NUMBER: CBAVYL



SIZES AND PACKAGING

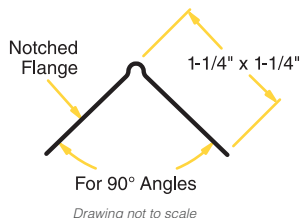
Corner Bead (Regular, Splay & Archway)

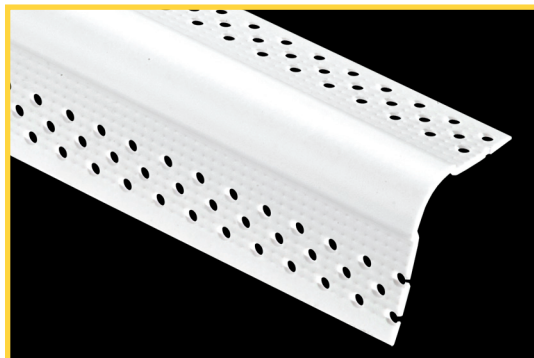
Length	Pieces Per Carton	Cartons Per Pallet	Feet Per Carton
8'	50	50	400
9'	50	50	450
10'	50	50	500

Corner Bead (Extra Wide)

Length	Pieces Per Carton	Cartons Per Pallet	Feet Per Carton
8'	40	48	320
9'	40	48	360
10'	40	48	400

UPC labeling available upon request





PART NUMBER: MBLVYL

3/8" BULLNOSE (MINI)

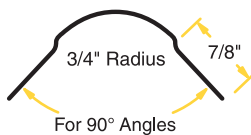
Phillips gripSTIK® Bullnose (Mini) is great for accenting detail in niches, layers, outside corners, windows and other areas. Flanges feature many perforations, deeply knurled mud anchors, and the entire product is specially textured to greatly enhance paint and mud adhesion. Easily install Phillips Mini Bullnose products like regular corner bead; no special drywall preparation is needed. Mini Bullnose Splay and Mini MAX-Flex® Bullnose Archway are also available; see next page for details. See below for packaging information. Phillips gripSTIK® multipurpose spray adhesive eases installation (see page 20 for details).



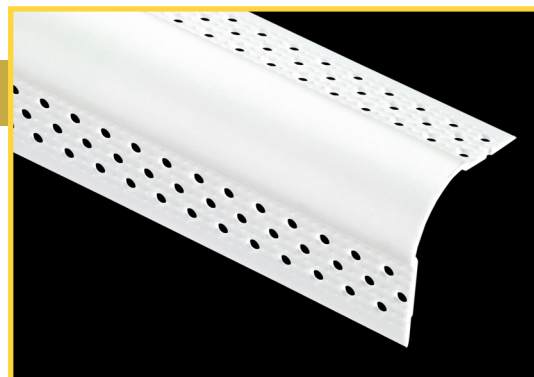
Drawing not to scale

3/4" BULLNOSE

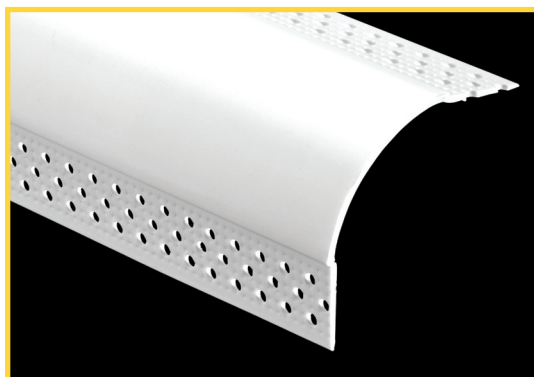
Phillips gripSTIK® bullnose corner beads create a smooth, rounded look to drywall corners and are easily installed using standard industry practice. Flanges feature many perforations, deeply knurled mud anchors, and the entire product is specially textured to greatly enhance paint and mud adhesion. Mini Bullnose Splay and Mini MAX-Flex® Bullnose Archway are also available; see next page for details. See below for packaging information. Phillips gripSTIK® multipurpose spray adhesive eases installation (see page 20 for details).



Drawing not to scale



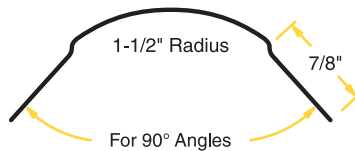
PART NUMBER: BN3VYL



PART NUMBER: BN5VYL

1-1/2" BULLNOSE

Phillips gripSTIK® 1-1/2" bullnose corner beads provide a larger radius for a more pronounced smooth and modern look. Flanges feature many perforations, deeply knurled mud anchors, and the entire product is specially textured to greatly enhance paint and mud adhesion. Mini Bullnose Splay and Mini MAX-Flex® Bullnose Archway are also available; see next page for details. Phillips gripSTIK® multipurpose spray adhesive eases installation (see page 20 for details).



Drawing not to scale

SIZES AND PACKAGING

3/4" Bullnose (Regular, Splay & Archway)

Length	Pieces Per Carton	Cartons Per Pallet	Feet Per Carton
8'	35	50	280
9'	35	50	315
10'	35	50	350

1-1/2" Bullnose (Regular, Splay & Archway)

8'	30	48	240
9'	30	48	270
10'	30	48	300

UPC labeling available upon request

SIZES AND PACKAGING

Mini Bullnose (Regular & Splay)

Length	Pieces Per Carton	Cartons Per Pallet	Feet Per Carton
8'	35	50	280
9'	35	50	315
10'	35	50	350

Mini Bullnose Archway

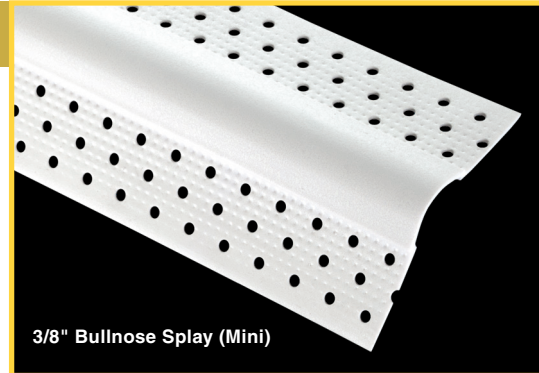
8'	25	50	200
9'	25	50	225
10'	25	50	250

UPC labeling available upon request

BULLNOSE VINYL CORNER BEADS

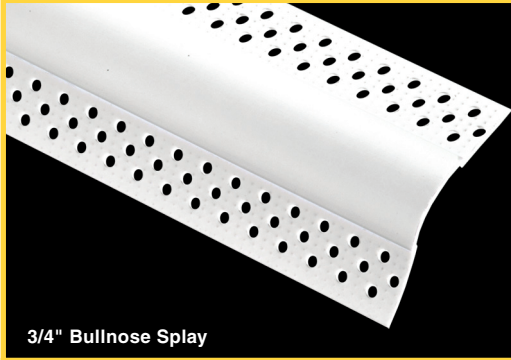
BULLNOSE SPLAY

Phillips gripSTIK® bullnose splay corner beads create a smooth, rounded look to a variety of open angles exceeding 120°. Flanges feature many perforations, deeply knurled mud anchors, and the entire product is specially textured to greatly enhance paint and mud adhesion. This product is available in 1-1/2" (BS5VYL) radius, 3/4" (BS3VYL) radius and 3/8" (Mini) (MBSVYL) radius. See previous page for packaging information.



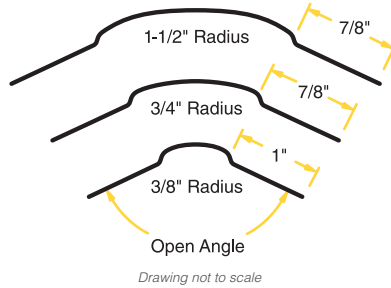
3/8" Bullnose Splay (Mini)

PART NUMBER: MBSVYL



3/4" Bullnose Splay

PART NUMBER: BS3VYL

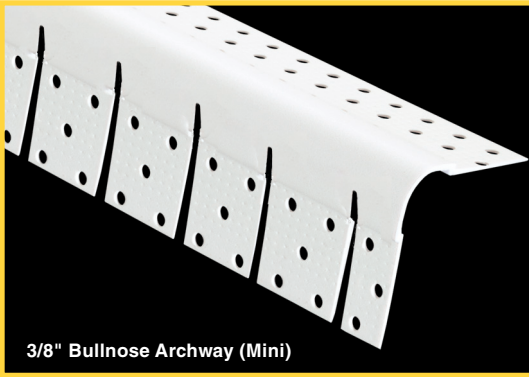


1-1/2" Bullnose Splay

PART NUMBER: BS5VYL

MAX-Flex® BULLNOSE ARCHWAY

Phillips gripSTIK® MAX-Flex® bullnose archway bead is designed for maximum flexibility allowing it to conform to almost any radius creating a round, elegant look. The 3/4" radius and 1-1/2" radius feature a straight-cut design for minimal fill-in. Mini Bullnose archway (3/8") features our unique "Y" shaped slits on the notched flange allowing for superior flexibility without kinking. Flanges feature many perforations, deeply knurled mud anchors, and the entire product is specially textured to greatly enhance paint and mud adhesion. This product is available in 1-1/2" (BA5VYL) radius, 3/4" (BA3VYL) radius and 3/8" (Mini) (MBAVYL) radius. See previous page for packaging information.

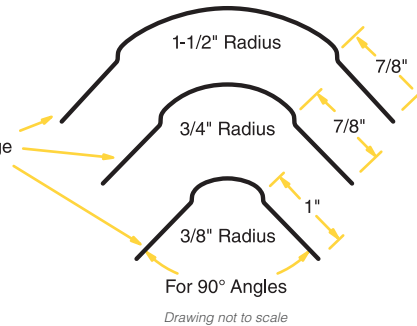


3/8" Bullnose Archway (Mini)

PART NUMBER: MBAVYL



Notched Flange



3/4" Bullnose Archway

PART NUMBER: BA3VYL



1-1/2" Bullnose Archway

PART NUMBER: BA5VYL

Use gripSTIK® Multipurpose Spray Adhesive with Phillips Vinyl Beads & Trims for perfect adhesion. See page 20 for product details.



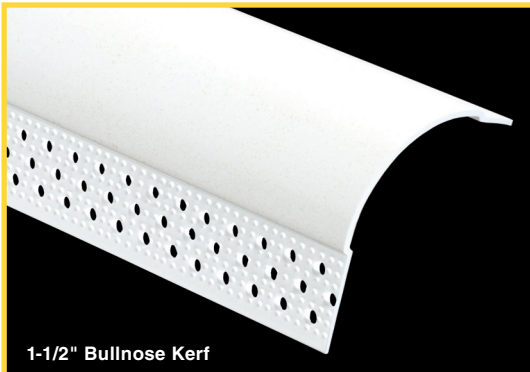
3/4" & 1-1/2" BULLNOSE KERF

Phillips gripSTIK® bullnose kerf has a unique shortened back flange allowing for easy insertion into grooved door jambs and window trims. Install using standard industry practice. This product is always a great fit and provides the smooth, round appearance associated with bullnose trims. Flanges feature many perforations, deeply knurled mud anchors, and the entire product is specially textured to greatly enhance paint and mud adhesion. Phillips offers vinyl bullnose kerf in both 3/4" (BK3VYL) and 1-1/2" (BK5VYL) radius for your convenience. The 1-1/2" radius provides a more pronounced round appearance adding a modern look to rooms.



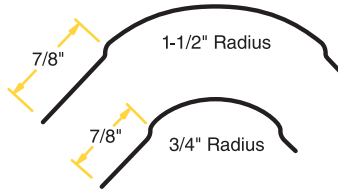
3/4" Bullnose Kerf

PART NUMBER: BK3VYL



1-1/2" Bullnose Kerf

PART NUMBER: BK5VYL



Drawing not to scale

SIZES AND PACKAGING

3/4" Bullnose Kerf

Length	Pieces Per Carton	Cartons Per Pallet	Feet Per Carton
8'	35	50	280
9'	35	50	315
10'	35	50	350

1-1/2" Bullnose Kerf

8'	30	70	240
9'	30	70	270
10'	30	70	300

UPC labeling available upon request

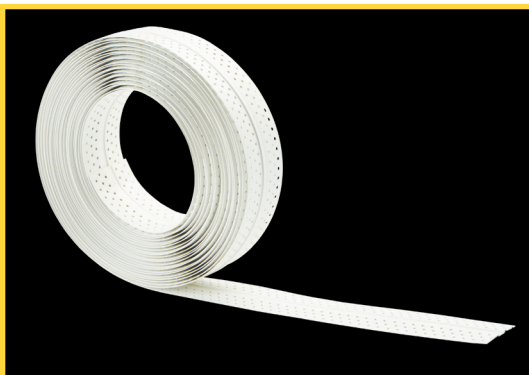


180FLEXKorner™ & EXPANSION JOINT

"Engineered to Perform"

Phillips gripSTIK® Corner Beads:

- » Perforated flanges for excellent joint compound adhesion as the joint compound penetrates through the bead to the drywall to support long-lasting adhesion
- » Deeply knurled mud anchors on flanges enhance joint compound adhesion
- » Works great for both drywall and interior veneer applications



PART NUMBER: 180FLXVYL

SIZES AND PACKAGING

180FLEXKorner™

Width	Length	Rolls Per Carton	Cartons Per Case	Feet Per Case
2-1/2"	50'	1	10	500'

UPC labeling available upon request

180FLEXKorner™ INSIDE/OUTSIDE ROLLED VINYL

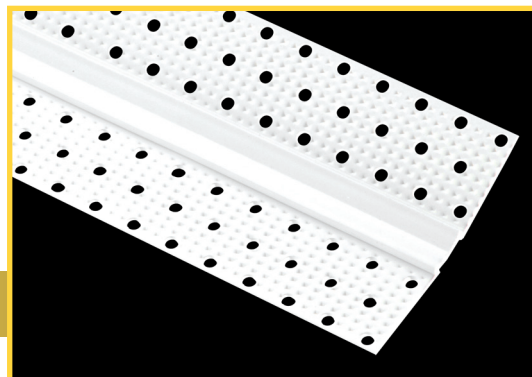
Phillips gripSTIK® 180FLEXKorner™ inside/outside rolled vinyl corner bead features a unique flexible angle design that is specially engineered to flex and hold virtually any degree of inside and outside corner without cracking. This durable and versatile product reduces call backs because it maintains shape when settlement occurs. Flanges feature many perforations and deeply knurled mud anchors to greatly enhance mud and paint adhesion. Available in 2-1/2" width and 50' rolls in an easy-to-carry carton (180FLXVYL).



Quick-Grab Handle

Product Dispenser

PHILLIPS
180FLEXKorner™
INSIDE/OUTSIDE ROLLED CORNER BEAD



PART NUMBER: 180FLXVYL-S

SIZES AND PACKAGING

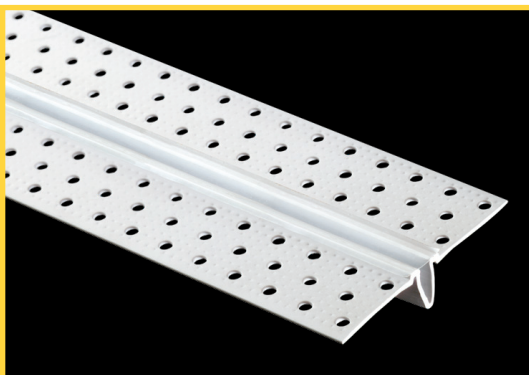
Inside Corner Adjustable

Length	Pieces Per Carton	Cartons Per Pallet	Feet Per Carton
8'	70	50	560
9'	70	50	630
10'	70	50	700

UPC labeling available upon request

180FLEXKorner™ INSIDE/OUTSIDE STICK

Phillips gripSTIK® 180FLEXKorner™ inside/outside vinyl corner bead has a unique flexible angle design that easily adjusts to any degree inside and outside corner. This extremely versatile product has been specially engineered to flex to virtually any degree inside or outside corner without cracking. Phillips offers 180FLEXKorner™ in sticks and also in 50' rolls in an easy-to-carry carton (180FLXVYL-S) for your convenience.



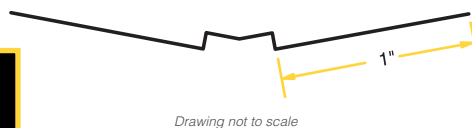
PART NUMBER: EZSVYL

SIZES AND PACKAGING

E-Z Strip® Expansion Control Joint

Length	Pieces Per Carton	Cartons Per Pallet	Feet Per Carton
10'	25	48	250

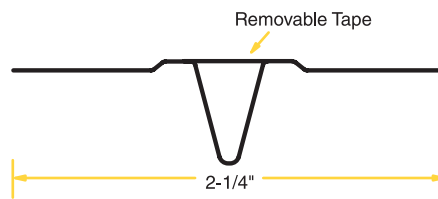
UPC labeling available upon request



Drawing not to scale

E-Z Strip® EXPANSION CONTROL JOINT

Phillips gripSTIK® 093 E-Z Strip® expansion control joint is designed to relieve the stresses of contraction and expansion. The expansion control joint groove is protected by plastic tape that can be easily removed after the joint finishing material has dried, leaving a clean well-formed joint. Easily install this durable and impact resistant product using standard industry practice. The perforated and knurled flanges allow for faster drying and enhance mud adhesion.



Drawing not to scale

"Engineered to Perform"

Phillips gripSTIK® Corner and Transition Caps:

- » Over 50 different corner and transition caps available
- » Works great with Phillips metal, vinyl or paper faced metal bullnose corner beads
- » U.S. Patents: RE34,547; 6,691,476; D487,520; D487,156; D501,050 and D486,920

3/4" 3-WAY CORNER

Phillips gripSTIK® 3/4" 3-way corner is designed to easily finish three intersecting bullnose 90° outside corners. This product eliminates the need for mitering and corner filling, saving time and reducing waste. Alignment tabs make it easy to match with Phillips metal, vinyl or paper faced metal bullnose corner beads. Perforated to enhance mud adhesion. Also available in 1/2" (CAP345) and 1-1/2" (CAP387 - see below) radius. Packaging is 50 pieces per carton.



PART NUMBER: CAP387



PART NUMBER: CAP385

1-1/2" 3-WAY CORNER

Phillips gripSTIK® 1-1/2" 3-way corner is designed to easily finish three intersecting bullnose 90° outside corners. This product eliminates the need for mitering and corner filling, saving time and reducing waste. Alignment tabs make it easy to match with Phillips metal, vinyl or paper faced metal bullnose corner beads. Perforated to enhance mud adhesion. Also available in 1/2" (CAP345) and 3/4" (CAP385 - see above) radius. Packaging is 50 pieces per carton.

3/4" 3-WAY SPLAY CORNER

Phillips gripSTIK® 3/4" 3-way splay corner is designed to easily finish where two 90° outside 3/4" bullnose corners intersect with one outside bullnose splay corner. This product eliminates the need for mitering and corner filling, saving time and reducing waste. Alignment tabs make it easy to match with Phillips metal, vinyl or paper faced metal bullnose corner beads. Perforated to enhance mud adhesion. Also available in 1-1/2" (CAP187 - see below) radius. Packaging is 50 pieces per carton.



PART NUMBER: CAP187



PART NUMBER: CAP135

1-1/2" 3-WAY SPLAY CORNER

Phillips gripSTIK® 1-1/2" 3-way off-angle corner is designed to easily finish where two 90° outside 1-1/2" bullnose corners intersect with one outside bullnose splay corner. This product eliminates the need for mitering and corner filling, saving time and reducing waste. Alignment tabs make it easy to match with Phillips metal, vinyl or paper faced metal bullnose corner beads. Perforated to enhance mud adhesion. Also available in 3/4" (CAP135 - see above) radius. Packaging is 50 pieces per carton.



INSIDE CORNER AND TRANSITION CAPS

2-WAY CORNER

Phillips gripSTIK® 2-way corners are designed to easily finish two intersecting 90° outside bullnose corners. This product works great to cap corners of windows, closets, doorways, skylights and other areas. Corner caps eliminate the need for mitering and corner filling, saving time and reducing waste. Perforated to enhance mud adhesion. Alignment tabs make it easy to match with Phillips metal, vinyl or paper faced metal bullnose corner beads. Available in 3/8" (Mini), 3/4" (CAP285) and 1-1/2" (CAP287). Packaging is 50 pieces



1-1/2" 2-Way Corner

PART NUMBER: CAP287



3/4" 2-Way Corner

PART NUMBER: CAP285

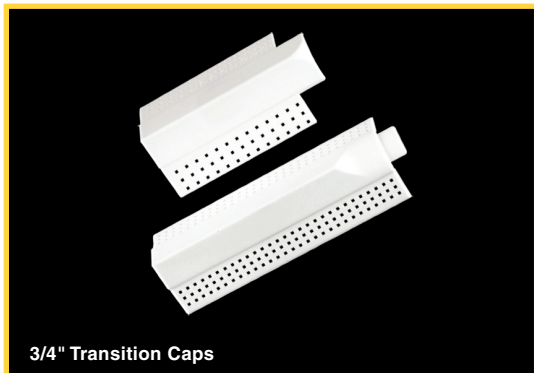
2-WAY SPLAY CORNER

Phillips gripSTIK® 2-way splay corners are designed to easily finish where two 90° outside bullnose corners intersect at angles greater than 90° or open angles. This product works great to corner cap windows, closets, doorways, skylights and other areas. Corner caps eliminate the need for mitering and corner filling, saving time and reducing waste. Perforated to enhance mud adhesion. Alignment tabs make it easy to match with Phillips metal, vinyl or paper faced metal bullnose corner beads. Available in 3/4" (CAP235). Packaging is 50 pieces per carton.



3/4" 2-Way Splay Corner

PART NUMBER: CAP235

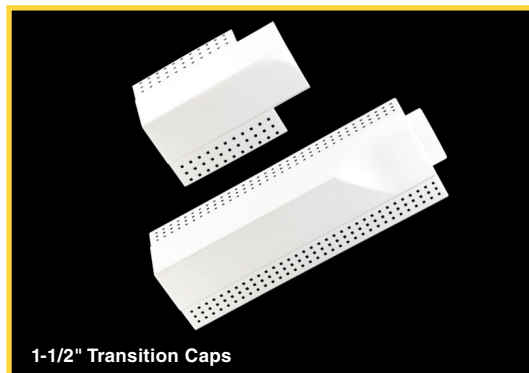


3/4" Transition Caps

PART NUMBER: SEE TEXT

Phillips gripSTIK® transition caps are designed to eliminate gaps between bullnose corner bead and baseboard or crown molding by transitioning bullnose corners to 90° corners. Phillips transition caps install quickly and easily using standard industry practice and can be used with Phillips metal, vinyl or paper faced corner beads. Perforated to enhance mud adhesion. Available in 3/4" Overlap Transition Cap (TRN790), 3/4" Transition Cap with Alignment Tab (TRN8590), 1-1/2" Overlap Transition Cap (TRN890) and 1-1/2" Transition Cap with Alignment Tab (TRN8790). Packaging is 50 pieces per carton.

TRANSITION CAPS



1-1/2" Transition Caps

PART NUMBER: SEE TEXT

DIDN'T FIND THE CORNER OR TRANSITION CAP YOU WERE SEEKING?



CAP390



CAP190

Phillips has over 50 different corner and transition caps available.

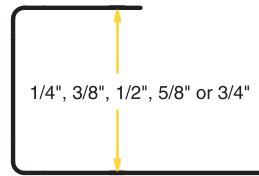
Call your sales representative at 800.822.5055 for more information or visit www.phillipsmfg.com to see Phillips gripSTIK® 90° 3-way square corner cap (CAP390), 3-way splay corner cap (CAP190) and much more.

J-TRIM

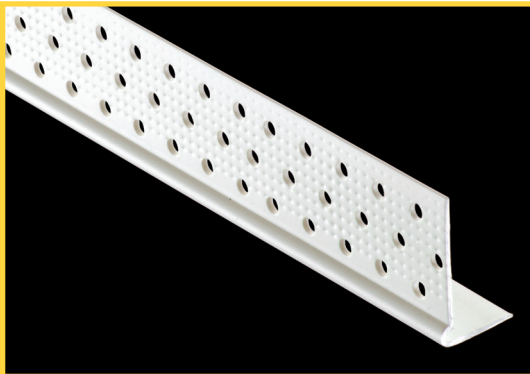
Phillips gripSTIK® J-Trim provides a finished edge at door and window openings along with other various wallboard intersections. This durable and impact resistant trim was designed with ease of installation in mind. J-Trim does not require any joint compound and can be nailed or slipped on. Install using standard industry practice. Phillips offers this product in 1/4" (JT2VYL), 3/8" (JT3VYL), 1/2" (JT5VYL), 5/8" (JT6VYL) and 3/4" (JT7VYL).



PART NUMBER: SEE TEXT



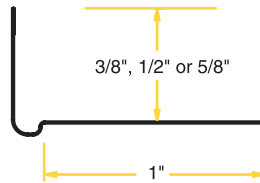
Drawing not to scale



PART NUMBER: SEE TEXT

L-TRIM

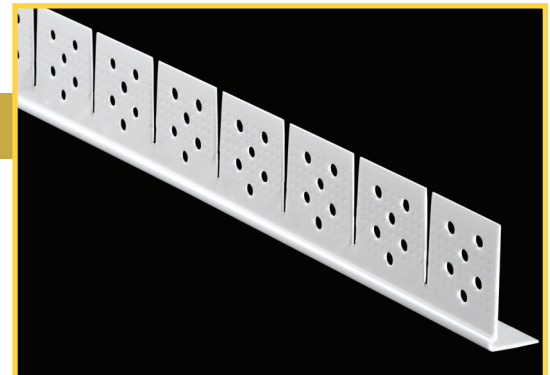
Phillips gripSTIK® L-Trim provides a clean, sharp edge at door, window, ceiling and other terminations. Install using standard industry practice. The many perforations and raised shoulder enhance strong compound adhesion and provide for a flush finish. Its deeply knurled mud anchors and specially textured surface provide superior paint and mud adhesion. Phillips offers this product in 3/8" (LT3VYL), 1/2" (LT5VYL) and 5/8" (LT6VYL).



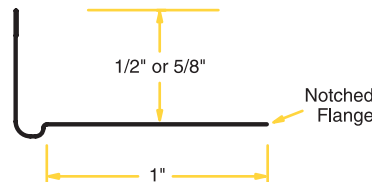
Drawing not to scale

MAX-Flex® L-TRIM ARCHWAY

Phillips gripSTIK® MAX-Flex® L-Trim archway is designed for maximum flexibility, conforming to almost any radius. This product features "Y" shaped slits on the notched flange for superior flexibility without kinking. The entire product is specially textured to enhance paint and mud adhesion. This product works great to provide a clean edge at door, window, ceiling and other terminations. This product is available in 1/2" (LA5VYL) and 5/8" (LA6VYL) sizes.



PART NUMBER: SEE TEXT



Drawing not to scale

SIZES AND PACKAGING

J-Trim (All Sizes)

Length	Pieces Per Carton	Cartons Per Pallet	Feet Per Carton
8'	50	48	400
9'	50	48	450
10'	50	48	500

L-Trim (All Sizes)

8'	80	48	640
9'	80	48	720
10'	80	48	800

UPC labeling available upon request

SIZES AND PACKAGING

MAX-Flex® L-Trim Archway (All Sizes)

Length	Pieces Per Carton	Cartons Per Pallet	Feet Per Carton
8'	80	48	640
9'	80	48	720
10'	80	48	800

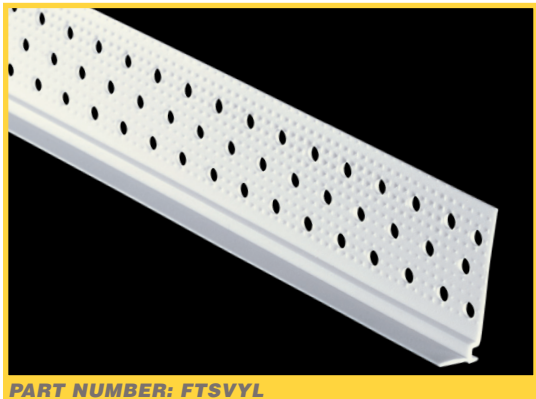
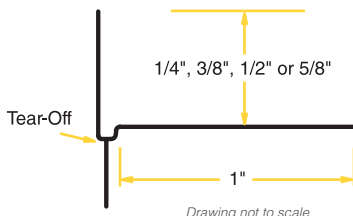
UPC labeling available upon request

L-TEAR STRIP

Phillips gripSTIK® L-Tear Strip provides a clean line at a variety of wallboard intersections. The tear-off strip provides a protective edge and a guide for drywall finishing knives. Once joint compound is applied, finished and painted, the tear-off strip is removed to form a clean, crisp edge. Its deeply knurled mud anchors, many perforations, and specially textured surface provide superior paint and joint compound adhesion. Phillips offers this product in 1/4" (TS2VYL), 3/8" (TS3VYL), 1/2" (TS5VYL) and 5/8" (TS6VYL).



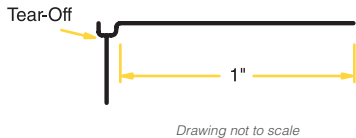
PART NUMBER: SEE TEXT



PART NUMBER: FTSVYL

FLAT L-TEAR STRIP

Phillips gripSTIK® Flat L-Tear Strip provides a clean line at a variety of wallboard intersections. A one-size-fits-all product, the Flat L-Tear Strip is used where a straight edge is needed and there is not enough room at the intersection for the leg. The tear-off strip provides a protective edge and a guide for drywall finishing knives. Once joint compound is applied, finished and painted, the tear-off strip is removed to form a clean, crisp edge. This product features deeply knurled mud anchors, many perforations, and specially textured surface to provide superior paint and joint compound adhesion.



gripSTIK® MULTIPURPOSE SPRAY ADHESIVE

Phillips gripSTIK® multipurpose spray adhesive is a high-tack, web-based spray adhesive used in many different applications and is ideal for adhering vinyl corner bead to drywall. This product works great when applying Phillips gripSTIK® vinyl beads and trims (see pages 12-20 for product details) and is commonly used to hang plastic sheathing or barriers on environmental abatement projects. This web-based spray adhesive features a unique adjustable nozzle for desired spray strength and width. The adhesive is tinted to help prevent overspray. This high quality product is available in 17 oz. cans. Packaging is 12 cans per case, 80 cases per pallet.



PART NUMBER: 999SPRAY

SIZES AND PACKAGING

L-Tear Strip (All Sizes)

Length	Pieces Per Carton	Cartons Per Pallet	Feet Per Carton
8'	50	48	400
9'	50	48	450
10'	50	48	500

Flat L-Tear Strip

8'	50	48	400
10'	50	48	500

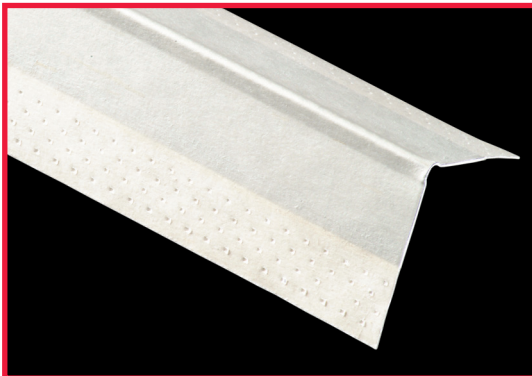
UPC labeling available upon request



"Engineered to Perform"

Phillips kwikSTIK® Paper Faced Products:

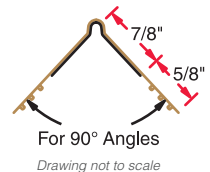
- » Rust preventative fully galvanized coating to withstand elements and adverse drying conditions
- » No edge cracking
- » No nail pops
- » High strength proprietary paper prevents balling when sanding



PART NUMBER: PEW14EGBNC

P1 XW EL (PEW)

Phillips kwikSTIK® P1 XW EL outside corner bead can be used on 90° outside corners with any standard drywall thickness for a clean, professional finish. This product features at least 50% thicker steel than ASTM standard C1047 minimum requirement for a strong, durable corner. P1 XW EL is tape-on, meaning no fasteners or nails are needed for installation. Specially engineered paper provides superior mud and paint adhesion.

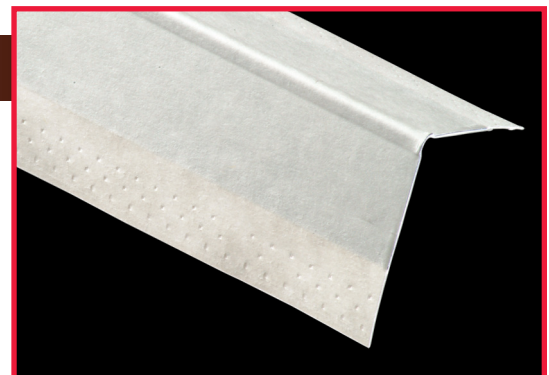


P1 MICRO BEAD (P1M)

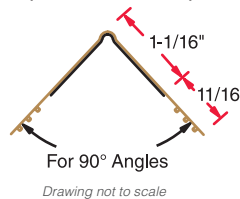
Phillips kwikSTIK® P1 Micro Bead outside corner bead is manufactured with ease and speed of installation in mind. With its smaller bead and wider flanges, this product goes up fast and requires less mudding, saving both time and money. Phillips P1 Micro Bead features at least 50% thicker steel than ASTM standard C1047 minimum requirement for a strong, durable corner. No fasteners or nails are needed for installation. Top quality paper provides superior mud and paint adhesion.



PART NUMBER: P1M14EGBNC

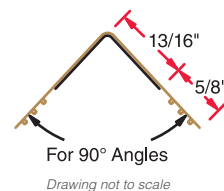


PART NUMBER: P1M14EGBNC



NO BEAD P1 X EL NB (P1N)

Phillips kwikSTIK® P1 X EL NB outside square corner bead is designed as an economical product as it features no bead meaning minimal joint compound is required for installation. Phillips P1 X EL NB features approximately 20% thicker steel than ASTM standard C1047 minimum requirement for a strong, durable corner. No fasteners or nails are needed for installation, and specially engineered paper provides superior mud and paint adhesion. See page 22 for No Bead Super Wide (PNB).



SIZES AND PACKAGING

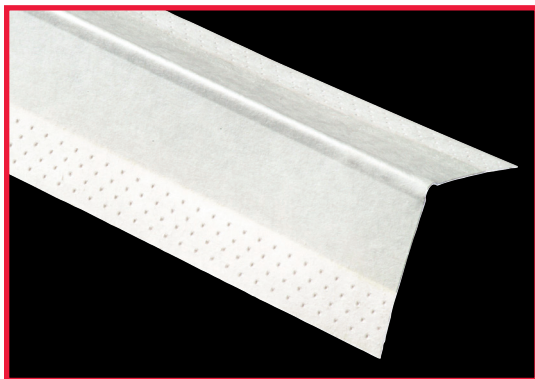
PEW, P1M, P1N

Length	Pieces Per Carton	Cartons Per Pallet	Feet Per Carton
8'	50	56	400
9'	50	56	450
10'	50	56	500

UPC labeling available upon request



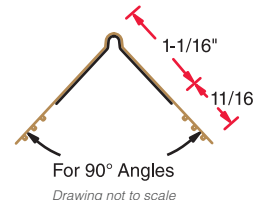
TAPE-ON PAPER FACED CORNER BEADS



PART NUMBER: PDW12EGBNC

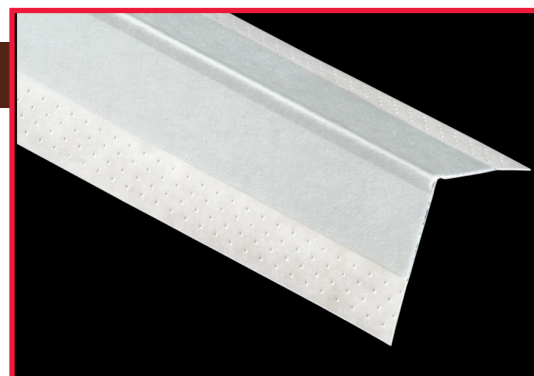
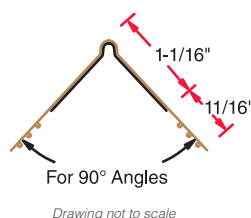
P1 DELUXE SUPER WIDE (PDW)

Phillips kwikSTIK® P1 Deluxe Super Wide outside corner bead features wider flanges for more complete coverage when finishing 90° corners. This product meets ASTM standard C1047. No fasteners or nails are needed for installation.

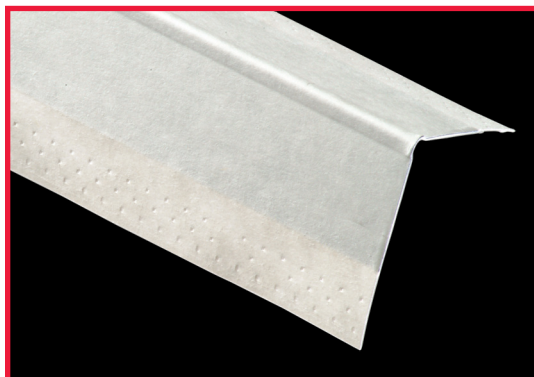


P1 SUPER WIDE (PSW)

Phillips kwikSTIK® P1 Super Wide outside corner bead features wider flanges for more complete coverage. This product is essentially the same product as P1 Deluxe Super Wide except P1 Super Wide utilizes slightly lighter steel making it a more economical product. This slightly lighter steel complies with ASTM standard C1047 as well as all other applicable ASTM standard requirements.



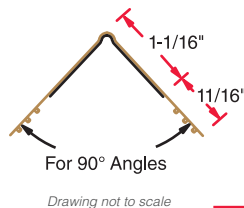
PART NUMBER: PSW10EGBNC



PART NUMBER: PDM12EGBNC

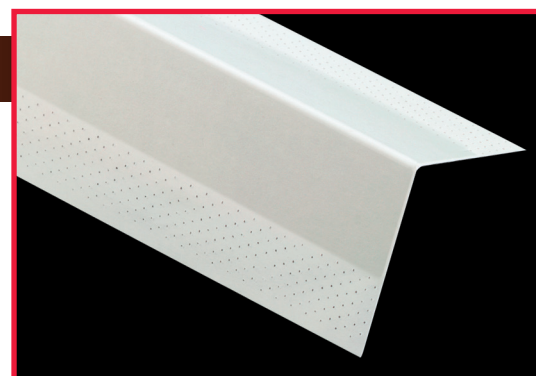
DELUXE MICRO BEAD (PDM)

Phillips kwikSTIK® Deluxe Micro Bead outside corner bead is manufactured with ease and speed of installation in mind. With its smaller bead and wider flanges, this product goes up fast and requires less mudding, saving both time and money. This product meets ASTM standard C1047. No fasteners or nails are needed for installation. Top quality paper provides superior mud and paint adhesion.



NO BEAD SUPER WIDE (PNB)

Phillips kwikSTIK® No Bead Super Wide outside square corner bead is designed as an economical product as it features no bead meaning minimal joint compound is required for installation. Phillips No Bead Super Wide meets ASTM standard C1047 requirements. This product features extra wide flanges for additional coverage where needed. No fasteners or nails are needed for installation, and specially engineered paper provides superior mud and paint adhesion.



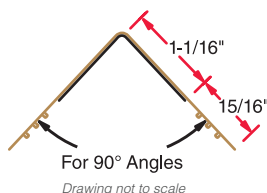
PART NUMBER: PNB12EGBNC

SIZES AND PACKAGING

PDW, PSW, PDM, PNB

Length	Pieces Per Carton	Cartons Per Pallet	Feet Per Carton
8'	50	56	400
9'	50	56	450
10'	50	56	500

UPC labeling available upon request



"Engineered to Perform"

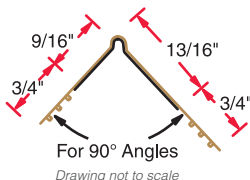
Phillips kwikSTIK® Paper Faced Products:

- » No fasteners or nails needed for installation
- » Perforated to help drying and serve as mud anchors
- » Features approximately 30% more mud anchors per square inch than competitive products
- » Proprietary paper composition promoting high wet and tear strength

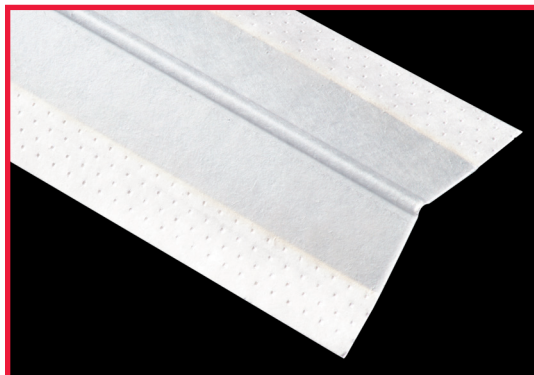


P1W UNEVEN LEG (PUL)

Phillips P1W outside square corner bead features an uneven leg designed to finish 90° corners. This product features at least 50% thicker steel than ASTM standard C1047 minimum requirement for a strong, durable corner. No fasteners or nails are needed for installation, and specially engineered paper provides superior mud and paint adhesion.



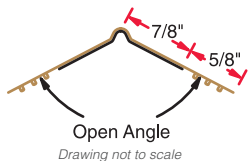
PART NUMBER: PUL14EGBNC



PART NUMBER: PSS14EGBNC

P1-OS SPLAY (PSS)

Phillips kwikSTIK® P1-OS outside splay corner bead is designed to finish open angle corners exceeding 120°. P1-OS features over 50% thicker steel than ASTM standard C1047 minimum requirement for a strong, durable corner. No fasteners or nails are needed for installation.



PART NUMBER: HOPPEROC

MUD HOPPER

Phillips Mud Hoppers work great to easily install kwikSTIK® Paper Faced Beads and Trims. This hopper is designed for all tape-on 90°, 3/4" bullnose and L beads. Phillips Mud Hoppers eliminate time consuming work, provide easy clean-up and are lightweight. Ask your Phillips sales representative for more information.

SIZES AND PACKAGING

PUL, PSS

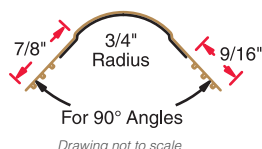
Length	Pieces Per Carton	Cartons Per Pallet	Feet Per Carton
8'	50	56	400
9'	50	56	450
10'	50	56	500

UPC labeling available upon request



DELUXE BULLNOSE (PDT)

Phillips kwikSTIK® 3/4" Southwestern Bullnose corner bead is an economical bead providing a round, smooth appearance to 90° outside corners. No fasteners or nails are needed for installation, and specially engineered paper provides superior mud and paint adhesion.



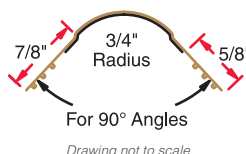
PART NUMBER: PDT12EGBNC



PART NUMBER: PBT14EGBNC

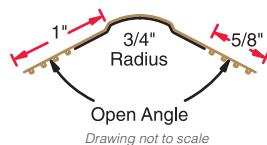
SLOK (PBT)

Phillips kwikSTIK® 3/4" SLOK bullnose corner bead provides a smooth, rounded finish to outside 90° corners. This product features approximately 20% thicker steel than ASTM standard C1047 minimum requirement for a strong, durable corner. Specially engineered paper provides superior mud and paint adhesion on all Phillips paper faced products. No fasteners or nails are needed for installation with Phillips kwikSTIK® tape-on corner beads.



SLOK-OS (PAT)

Phillips kwikSTIK® 3/4" SLOK-OS bullnose splay corner bead works great to provide a more pronounced round finish to outside corners exceeding 120°. This product features approximately 20% thicker steel than ASTM standard C1047 minimum requirement for a strong, durable corner. Specially engineered paper provides superior mud and paint adhesion on all Phillips paper faced products. No fasteners or nails are needed for installation with Phillips kwikSTIK® tape-on corner beads.



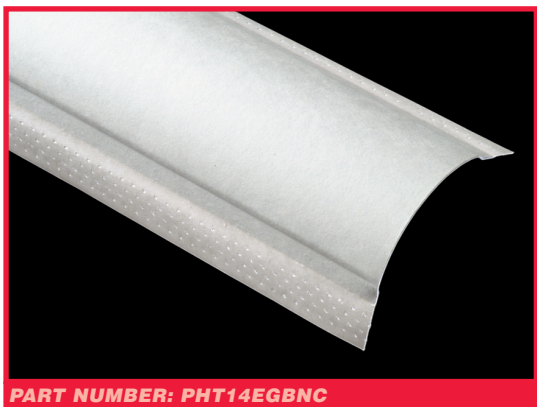
PART NUMBER: PAT14EGBNC

SIZES AND PACKAGING

PBT, PAT, PDT

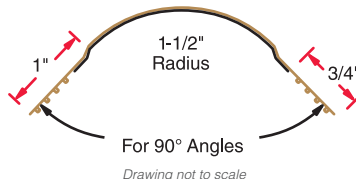
Length	Pieces Per Carton	Cartons Per Pallet	Feet Per Carton
8'	50	56	400
9'	50	56	450
10'	50	56	500

UPC labeling available upon request



1-1/2" BULLNOSE (PHT)

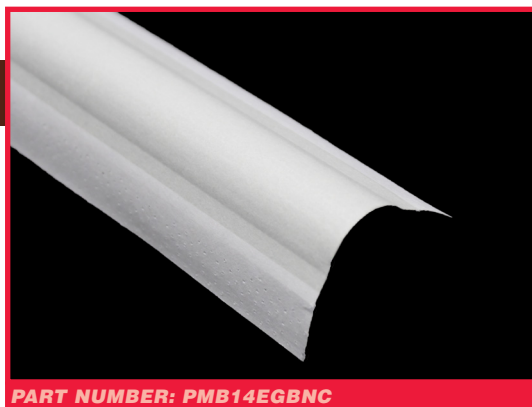
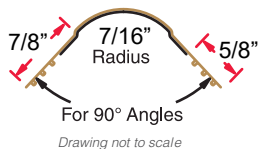
Phillips kwikSTIK® 1-1/2" Bullnose corner bead works great to provide a more pronounced round finish to outside 90° corners. This product features approximately 20% thicker steel than ASTM standard C1047 minimum requirement for a strong, durable corner. Specially engineered paper provides superior mud and paint adhesion on all Phillips paper faced products. No fasteners or nails are needed for installation with Phillips kwikSTIK® tape-on corner beads.



PART NUMBER: PHT14EGBNC

MINI BULLNOSE (PMB)

Phillips kwikSTIK® Bullnose (Mini) is great for accenting detail in niches, layers, outside corners, windows and other areas. Easily install Phillips Mini Bullnose products like regular corner bead; no special drywall preparation is needed. Specially engineered paper provides superior mud and paint adhesion on all Phillips paper faced products. No fasteners or nails are needed for installation with Phillips kwikSTIK® tape-on corner beads.



PART NUMBER: PMB14EGBNC

SIZES AND PACKAGING

PHT

Length	Pieces Per Carton	Cartons Per Pallet	Feet Per Carton
8'	25	56	200
9'	25	56	225
10'	25	56	250

UPC labeling available upon request

SIZES AND PACKAGING

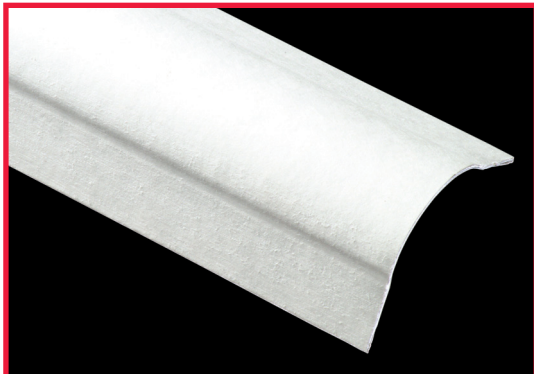
PHT & PMB

Length	Pieces Per Carton	Cartons Per Pallet	Feet Per Carton
8'	50	56	400
9'	50	56	450
10'	50	56	500

UPC labeling available upon request



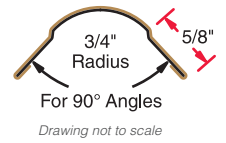
NAIL-ON PAPER FACED CORNER BEADS



PART NUMBER: PBN14EGBNC

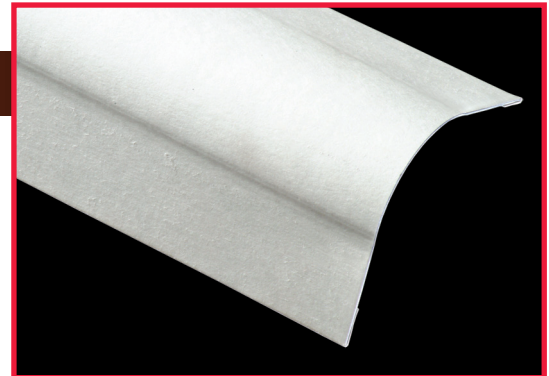
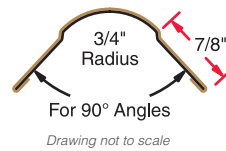
SLOK-N (PBN)

Phillips kwikSTIK® SLOK-N nail-on bullnose corner bead is designed for smooth, round outside corners where nailing or other mechanical fastening is desired. This metal corner bead is covered with our specially engineered paper providing superior mud and paint adhesion. SLOK-N features approximately 20% thicker steel than ASTM standard C1047 minimum requirement for a strong, durable corner.



SLOK-NXW (PEN)

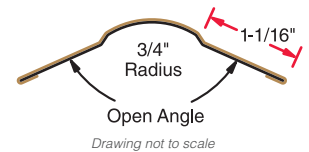
Phillips kwikSTIK® SLOK-NXW nail-on bullnose extra wide corner bead is designed for smooth, round outside corners where nailing or other mechanical fastening is desired. This product provides wider flanges for easier nailing and maximum coverage. SLOK-NXW features approximately 20% thicker steel than ASTM standard C1047 minimum requirement for a strong, durable corner. This metal corner bead is covered with our specially engineered paper providing superior mud and paint adhesion.



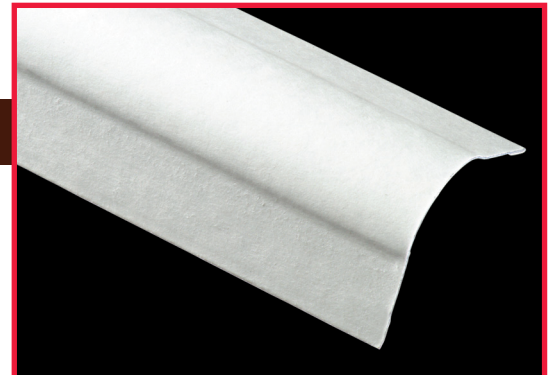
PART NUMBER: PEN14EGBNC

SLOK-NOS (PAN)

Phillips kwikSTIK® SLOK-NOS nail-on bullnose splay corner bead provides a round, smooth corner to open angles exceeding 120° where nailing or other mechanical fastening is desired. This product features approximately 20% thicker steel than ASTM standard C1047 minimum requirement for a strong, durable corner. SLOK-NOS is covered with our specially engineered paper providing superior mud and paint adhesion.



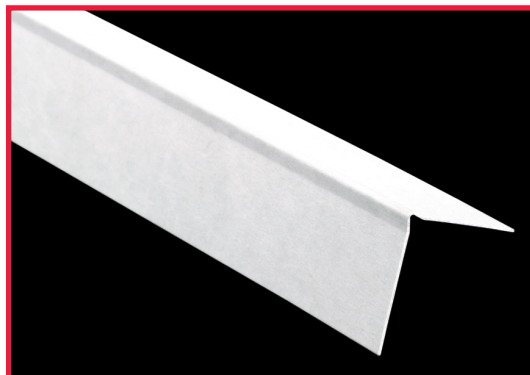
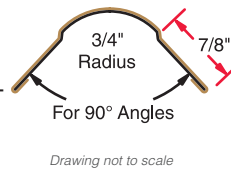
PART NUMBER: PAN14EGBNC



PART NUMBER: PSD12EGBNC

DELUXE SOUTHWESTERN-NXW (PSD)

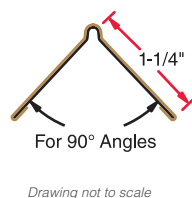
Phillips kwikSTIK® Deluxe Southwestern-NXW nail-on bullnose extra wide corner bead is designed for smooth, round corners where nailing or other mechanical fastening is desired. This product is an economical alternative to SLOK-NXW as it features the same fundamental properties as the SLOK-NXW except this product utilizes slightly lighter steel that meets ASTM standard C1047.



PART NUMBER: PNW14EGBNC

NAIL-ON SQUARE BEAD (PNW)

Phillips kwikSTIK® nail-on square bead is used on 90° corners for a clean professional look. This metal corner bead is covered with our specially engineered paper providing superior paint and mud adhesion. Standard flange length is 1-1/4".



SIZES AND PACKAGING

PBN, PEN, PAN

Length	Pieces Per Carton	Cartons Per Pallet	Feet Per Carton
8'	50	56	400
9'	50	56	450
10'	50	56	500

UPC labeling available upon request

SIZES AND PACKAGING

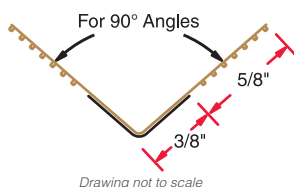
PIC, PSI, PL1, PL5

Length	Pieces Per Carton	Cartons Per Pallet	Feet Per Carton
8'	50	56	400
9'	50	56	450
10'	50	56	500

UPC labeling available upon request



PART NUMBER: PIC14EGB

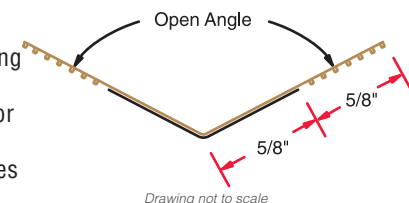


Phillips kwikSTIK® P2 tape-on inside corner trim is designed to form a true inside (90°) corner. This product features approximately 20% thicker steel than ASTM standard C1047 minimum requirement for a strong, durable inside corner. P2 is tape-on meaning no fasteners or nails are needed for installation. Specially engineered paper provides superior mud and paint adhesion.

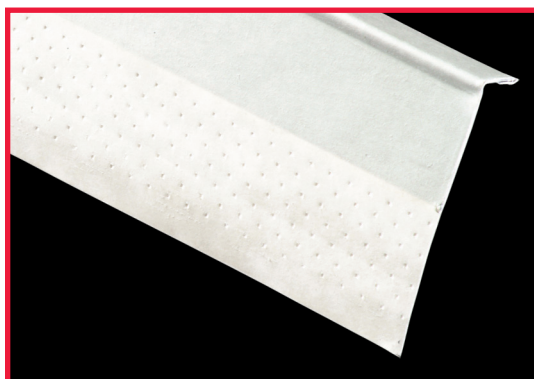
P2 (PIC)

P2-OS (PSI)

Phillips kwikSTIK® P2-OS tape-on splay inside corner is designed for wider open angles on inside corners exceeding 120°. This product features approximately 20% thicker steel than ASTM standard C1047 minimum requirement for a strong, durable inside corner. No fasteners or nails are needed for installation. Specially engineered paper provides superior mud and paint adhesion.



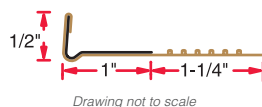
PART NUMBER: PSI14EGB



PART NUMBER: PL114EGB

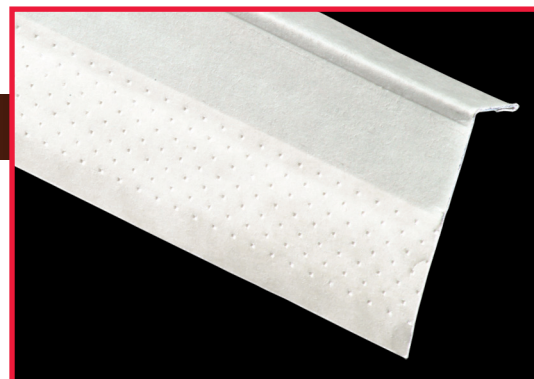
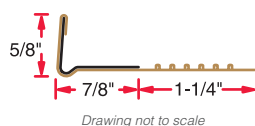
1/2" P4 L-TRIM (PL1)

Phillips kwikSTIK® 1/2" P4 L-Trim tape-on trim is ideal where wallboard abuts with suspended ceilings, beams, plaster, masonry and concrete walls, as well as untrimmed door and window jambs. L-Trim features approximately 20% thicker steel than ASTM standard C1047 minimum requirement for a strong, durable corner. No fasteners or nails are needed for installation, and specially engineered paper provides superior mud and paint adhesion. Also available without a bead.



5/8" P4 L-TRIM (PL5)

Phillips kwikSTIK® 5/8" P4 L-Trim tape-on trim is ideal where wallboard abuts with suspended ceilings, beams, plaster, masonry and concrete walls, as well as untrimmed door and window jambs. This product features approximately 20% thicker steel than ASTM standard C1047 minimum requirement for a strong, durable corner. This product is tape-on meaning no fasteners or nails are needed for installation. Specially engineered paper provides superior mud and paint adhesion. Also available without a bead, and in 3/4" and 1" ground dimensions.



PART NUMBER: PL514EGB



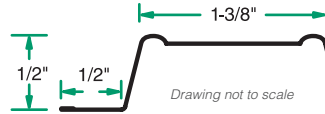
RESILIENT SOUND CHANNELS



PART NUMBER: RC125HDG

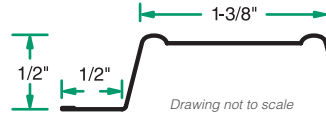
RC-1 Tru-25® GAUGE

Phillips RC-1 Tru-25® is a resilient sound channel manufactured to exacting specifications to minimize sound transmission through wall partitions and ceilings. Phillips RC-1 works great to prevent ridging and cracking in ceilings. RC-1 is deeply knurled for positive screw placement and to eliminate wandering. **RC-1 is also available in Weath-Ex® (see below) and Standard Duty (RC1SDHDG).** See below for packaging information.

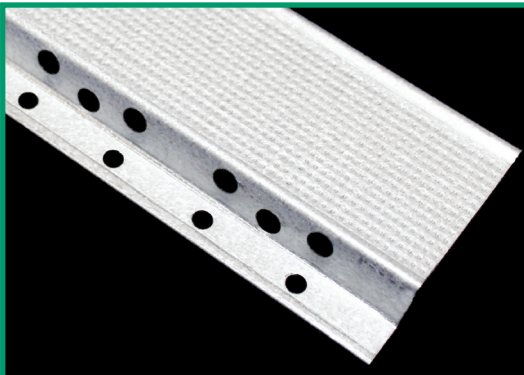


RC-1 Weath-Ex® Tru-25® GAUGE

Phillips RC-1 Weath-Ex® Tru-25® is a resilient sound channel manufactured to exacting specifications to minimize sound transmission through wall partitions and ceilings. Phillips RC-1 works great to prevent ridging and cracking in ceilings. RC-1 is deeply knurled for positive screw placement and to eliminate wandering. Phillips RC-1 Weath-Ex® has an extra surface coating over hot-dipped galvanized material to provide extra corrosion protection. See below for packaging information.



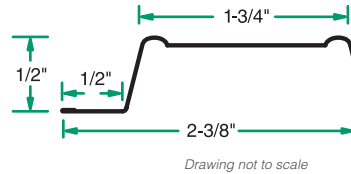
PART NUMBER: RC125HDP



PART NUMBER: RC1XLHDG

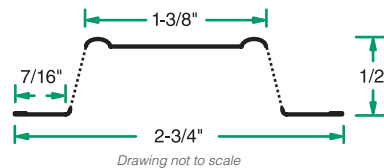
RC-XL

Phillips RC-XL is a resilient sound channel manufactured to exacting specifications to minimize sound transmission through wall partitions and ceilings. Phillips RC-XL works great to prevent ridging and cracking in ceilings. RC-XL is deeply knurled for positive screw placement and to eliminate wandering. The expanded width fits a wider variety of rated assemblies. See below for packaging information.



RC-2 (TWO LEG RESILIENT SOUND CHANNEL)

Phillips RC-2 resilient sound channel is used as cross furring members for resilient attachment of gypsum wallboard or lath on ceilings and partitions. RC-2 features expanded metal which decreases sound transmission through wall partitions and ceilings. Hemmed edges allow for safe and easy installation. The RC-2 features two legs for greater attachment security. Channel depth is 1/2", and it is manufactured with 25 gauge galvanized steel.



PART NUMBER: RC225HDG

SIZES AND PACKAGING

RC-1, RC-XL

Length	Pieces Per Bundle	Bundles Per Pallet	Feet Per Bundle
10'	20	50	200
12'	20	50	240

UPC labeling available upon request

SIZES AND PACKAGING

RC-2

Length	Pieces Per Bundle	Bundles Per Pallet	Feet Per Bundle
10'	40	42	400
12'	40	42	480

UPC labeling available upon request

"Engineered to Perform"

Phillips Metal Channels:

- » Wide nailing flanges for positive clip attachment
- » Hemmed edges and knurling ensure positive screw location and eliminate wandering

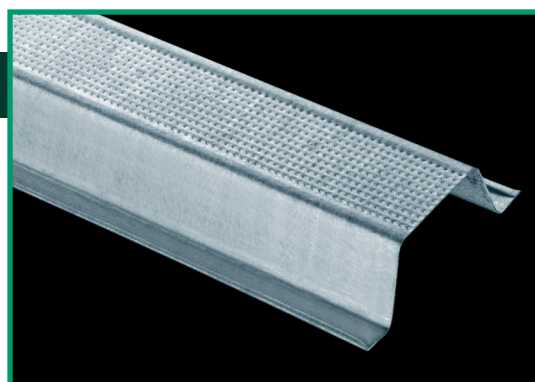


7/8" DWC HAT FURRING CHANNEL

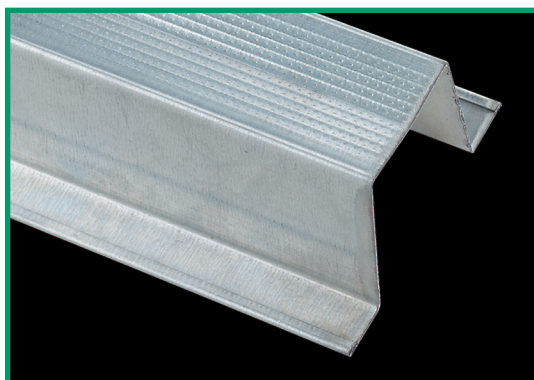
Phillips 7/8" DWC Hat Furring Channel is a ceiling and wall furring channel designed with wide nailing flanges for positive clip attachment. Phillips offers this product in 25, 22 and 20 gauge steel. In 25 gauge steel, this product features hemmed edges and knurling to ensure positive screw placement and eliminate wandering. The standard length is 12'; however, other lengths may be available.



Drawing not to scale



PART NUMBER: 087F125



PART NUMBER: 150F125

1-1/2" DWC HAT FURRING CHANNEL

Phillips 1-1/2" DWC Hat Furring Channel features a deeper furring channel for an increasing number of applications. Phillips offers this product in 25, 22 and 20 gauge steel. In 25 gauge steel, this product features hemmed edges and knurling to ensure positive screw placement and eliminate wandering. The standard length is 12'; however, other lengths may be available.



Drawing not to scale

SIZES AND PACKAGING

DWC Hat Furring Channel

Product Size	Length	Pieces Per Bundle	Bundles Per Pallet	Feet Per Bundle
20 Gauge				
7/8"	12'	10	45	120
1-1/2"	12'	10	45	120
22 & 25 Gauge				
7/8"	12'	20	45	240
1-1/2"	12'	20	45	240

UPC labeling available upon request

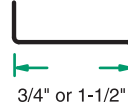
CHANNELS



PART NUMBER: SEE TEXT

COLD ROLLED CHANNEL

Phillips Cold Rolled Channel is a superior channel used for ceilings and laterally bracing studs. Also utilized for suspended ceilings and partition construction. Features tightly formed corners and consistent equal height legs to facilitate ease of installation. Phillips provides this product hot-dipped galvanized. Phillips Cold Rolled Channel is manufactured from 16 gauge steel and is available in 3/4" (075U50) and 1-1/2" (150U50).



3/4" or 1-1/2"

Drawing not to scale

SIZES AND PACKAGING

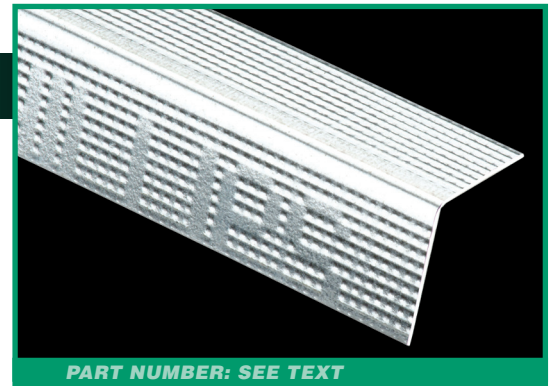
Cold Rolled Channel

Length	Pieces Per Bundle	Bundles Per Pallet	Feet Per Bundle
10'	10	40	100
16'	10	40	160
20'	10	40	200

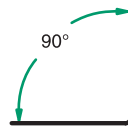
UPC labeling available upon request

KNURLED ANGLE RUNNER 90° (UTILITY ANGLE)

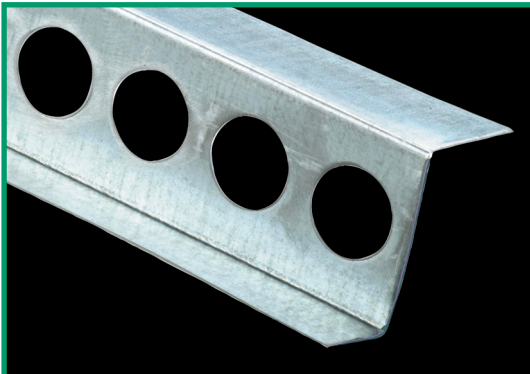
Phillips Knurled Angle Runner is a multi-purpose steel 90° angle ideal for bridging and backing around perimeters of ceiling, as a vertical attachment where gypsum partitions intersect with other surfaces, and other applications. This product is used in caged beam construction as well as in place of studs and tracks in chase walls. Apply angles as floor and ceiling runners, plus dozens of other applications. Phillips offers this product in 25, 22, 20 and 18 gauge steel. The standard sizes are 1-1/2" x 1-1/2" (150A150) and 2" x 2" (200A200); however, Phillips provides other custom sizes to suit all needs. Packaging depends on your custom size, gauge and length. Standard length is 10'. For standard packaging information, please visit Phillips website at www.phillipsmfg.com. For Heavy Gauge Angles, see page 38.



PART NUMBER: SEE TEXT



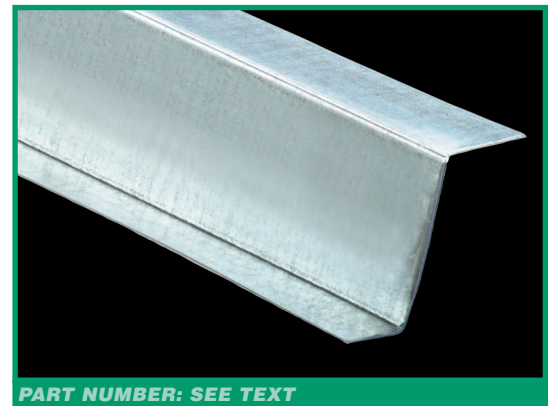
Drawing not to scale



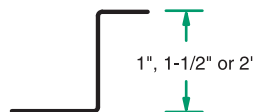
PART NUMBER: SEE TEXT

Z-FURRING CHANNEL

Phillips Z-Furring Channel is used to furr out interior masonry, poured concrete and other applications. This product supports insulation while providing a uniform plane for gypsum panel attachment. Phillips Z-Furring Channel is available in 1" (ZCH100), 1-1/2" (ZCH150) and 2" (ZCH200) and comes in 25, 22 and 20 gauge steel. Also, available without holes (NH) upon request.



PART NUMBER: SEE TEXT



Drawing not to scale

SIZES AND PACKAGING

Z-Furring Channel (All Sizes)

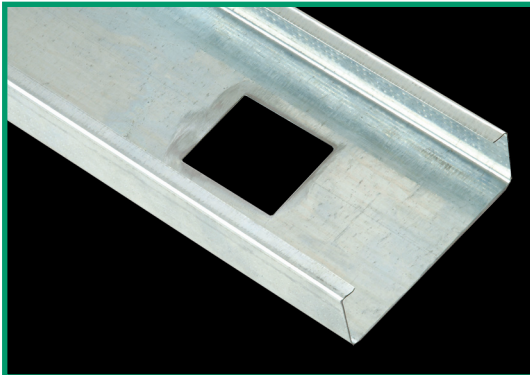
Length	Pieces Per Bundle	Bundles Per Pallet	Feet Per Bundle
20 Gauge			
10'	10	60	100
12'	10	60	120
22 & 25 Gauge			
10'	20	60	200
12'	20	60	240

UPC labeling available upon request

"Engineered to Perform"

Phillips Conventional Interior Framing Products:

- » Roll-formed from corrosion resistant galvanized steel
- » Studs have pre-punched knockouts for easy installation
- » Available in regional markets



PART NUMBER: SEE TEXT

CONVENTIONAL METAL STUDS

Phillips conventional metal studs are "C" shaped metal studs fabricated from galvanized steel. The standard widths for drywall metal studs are 1-5/8" (162S125), 2-1/2" (250S125), 3-5/8" (362S125), 4" (400S125) and 6" (600S125). Standard lengths are 10', 12', 14', and 16'. Conventional metal studs are available in 25, 22, 20, 18 and 16* gauge steel. Packaging depends on your chosen length, width and gauge; ask your sales representative for more information. For Structural Studs, see page 37. Please visit Phillips website at www.phillipsmfg.com to download Phillips Conventional Metal Studs standard packaging sheets.

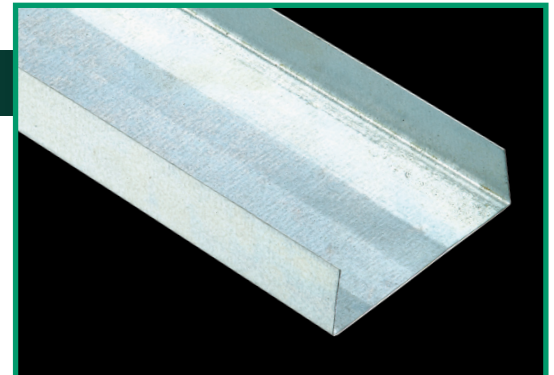


1-5/8", 2-1/2", 3-5/8", 4" or 6"

Drawing not to scale

CONVENTIONAL METAL TRACKS

Phillips conventional metal tracks are fastened at the floor and ceiling to support the steel studs. Metal tracks are channel shaped and fabricated from galvanized steel. Phillips offers conventional tracks in 25, 22, 20, 18 and 16* gauge steel. Hemmed track is available in 25 gauge steel. The standard widths for metal tracks are 1-5/8" (162T125), 2-1/2" (250T125), 3-5/8" (362T125), 4" (400T125) and 6" (600T125). Standard length is 10'. Packaging depends on your chosen length, width and gauge; please visit Phillips website at www.phillipsmfg.com to download Phillips Metal Tracks standard packaging sheets.



PART NUMBER: SEE TEXT



1-5/8", 2-1/2", 3-5/8", 4" or 6"

Drawing not to scale

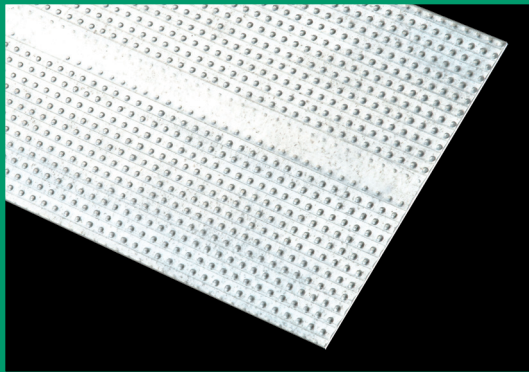
*1-5/8" available in 20, 22 and 25 gauge only

FLAT STRAP OR FLAT STOCK

"Engineered to Perform"

Phillips Flat Strap:

- » Deeply knurled to eliminate screw wandering
- » Variety of sizes to suit your needs



PART NUMBER: CUSTOM

FLAT STRAP (FLAT STOCK)

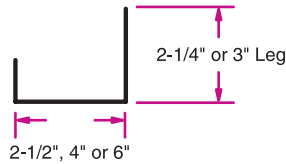
Phillips Flat Strap is a multi-purpose product used on a large number of applications. This product is commonly used as a backer plate to support shelves, cabinets, fixtures and handrails when installed to metal or wood framing. This product is deeply knurled for positive screw placement and to eliminate wandering. Phillips offers this product in 25, 22, 20, 18 and 16 gauge steel. This product is readily available in a variety of widths and lengths; ask your sales representative for more information. Standard packaging is 250 pieces per pallet.

» PHILLIPS TOP PRIORITY IS CUSTOMER SATISFACTION INCLUDING ON-TIME DELIVERIES

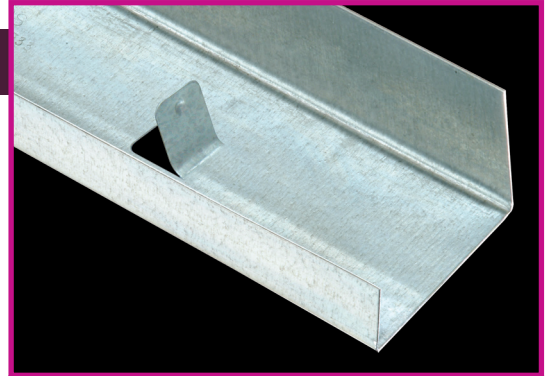


TABBED J-TRACK

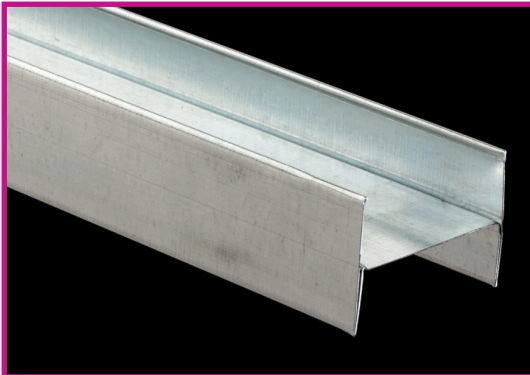
Phillips Tabbed J-Track is used with common shaftwall studs at floor and ceiling cavity shaftwalls, vertical chases and area separation walls. The tabs retain a 1" shaftliner. J-Track is manufactured with galvanized steel. Phillips Tabbed J-Track is available with either a 2-1/4" or 3" leg. 2-1/4" leg is available in both 25 and 20 gauge steel and 3" leg is available in 20 gauge steel. Phillips provides widths of 2-1/2" (250J), 4" (400J) and 6" (600J) to suit all needs (6" available in 20 gauge only). Packaging depends on your chosen length, width, leg size and gauge; ask your sales representative for more information.



Drawing not to scale



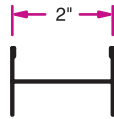
PART NUMBER: SEE TEXT



PART NUMBER: 2HH-25HDG

HEMMED H-STUD

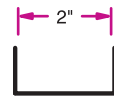
Phillips Hemmed H-Stud is a key framing component and adds structural integrity to area separation wall assemblies. This product features 2" wide vertical members which are inserted into the U-Track for framing solid partition separation walls. This product is manufactured to length for your convenience. Phillips Hemmed H-Stud follows nationally recognized evaluation service ICC ES, Inc. Legacy Report 90-26.01.



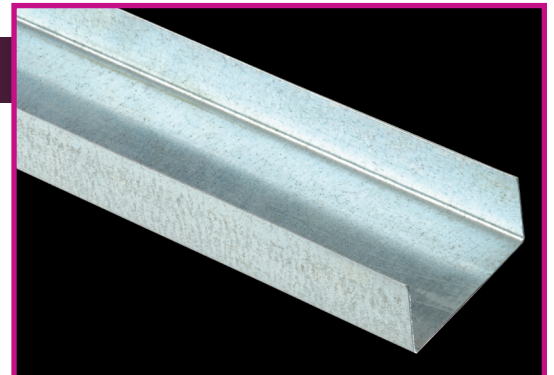
Drawing not to scale

U-TRACK

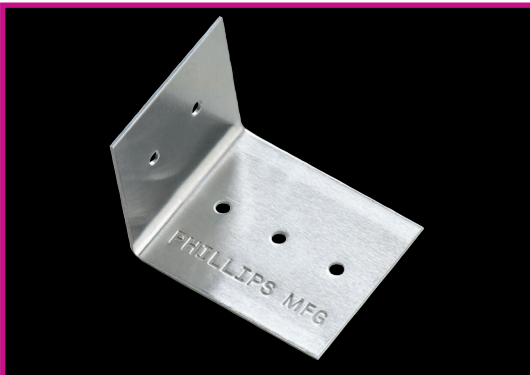
Phillips U-Track is used at the top and bottom of vertical panels to secure shaftliner panels and H-Studs in area separation wall assemblies. U-Track is fastened at the floor and ceiling to support the H-Studs. This product has a 2" width.



Drawing not to scale



PART NUMBER: 2U-25HDG



PART NUMBER: ASWCLIP

ASW CLIPS

Phillips ASW Clips are attached to the wood or steel framing at vertical steel framing stud/ wood framing intersections. ASW Clips are 2" wide with 2" x 2-1/2" legs. Packaging is 500 pieces per carton.

SIZES AND PACKAGING

Hemmed H-Stud

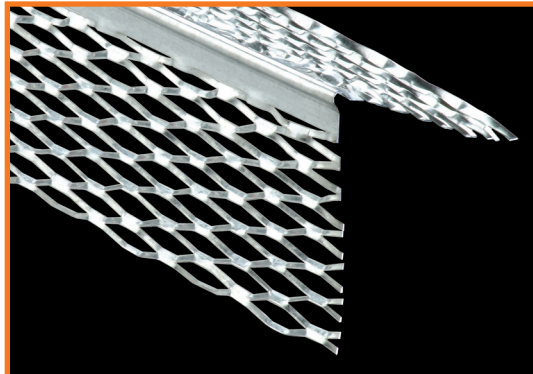
Length	Pieces Per Bundle	Bundles Per Pallet	Feet Per Bundle
8'	10	55	80
10'	10	55	100
12'	10	55	120

U-Track

10'	10	54	100
-----	----	----	-----

UPC labeling available upon request

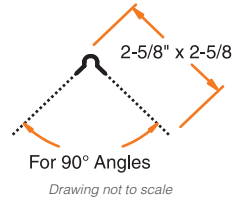
STUCCO ACCESSORIES



PART NUMBER: 01ECB

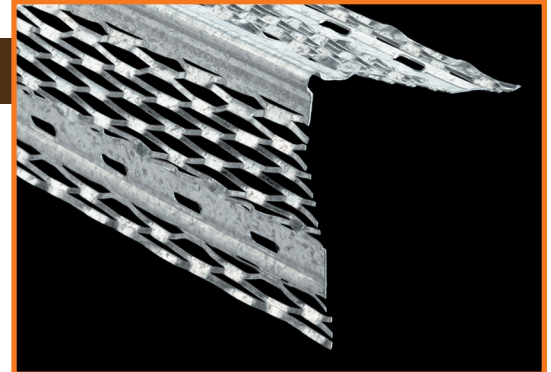
#1 EXPANDED CORNER BEAD

Phillips #1 Expanded Corner Bead is designed to provide strong corner reinforcement for conventional plaster applications. A solid metal nose provides a straight, rigid ground, and the 2-5/8" flanges can be easily flexed over irregular, uneven surfaces (3" special order, minimum quantities may apply). Easily install using standard industry practice. Plaster keys near solid nose provide reinforcement where needed most to ensure straight corners. Phillips offers this product in both galvanized steel (HDG) and zinc* (ZNC).

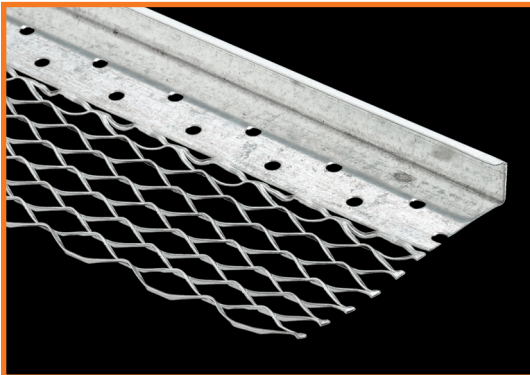
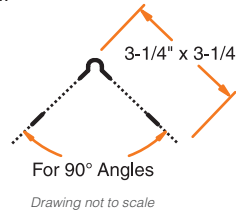


#33 WIDE EXPANDED FLANGE BEAD

Phillips #33 Wide Expanded Flange Bead provides additional rigidity and strength with its reinforced flanges. This product is for use on masonry, beams and column fireproofing. Combination of expanded flanges and pronounced bead nose ensures successful corner alignment and efficient plaster keying from edge to nose. Manufactured with full stiffening ribs to enhance durability. This product is produced with galvanized steel (HDG) and zinc* (ZNC).



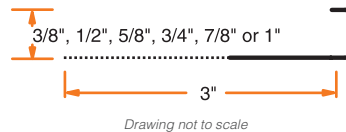
PART NUMBER: 33WFC



PART NUMBER: SEE TEXT

#66 EXPANDED FLANGE SQUARE CASING

Phillips #66 Expanded Flange Square Casing is designed as a universal plaster stop used at wall terminations, door and window openings and intersections. This product protects edges from damage and helps cover shrinkage cracks. The expanded flange grounds 3/8" (66EFC3), 1/2" (66EFC5), 5/8" (66EFC6), 3/4" (66EFC7), 7/8" (66EFC8) and 1" (66EFC1) (1-1/4" and 1-1/2" special order, minimum quantities may apply). Phillips offers #66 Expanded Flange Square Casing in both galvanized steel (HDG) or zinc* (ZNC). Also available with weep holes (66EFW).



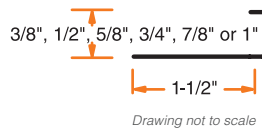
#66 SHORT FLANGE SQUARE CASING

Phillips #66 Short Flange Square Casing provides a short 90° angle return at plaster surface which serves as a plastering stop to ensure a neat finish. Phillips #66 Short Flange Square Casing's perforated flanges aid attachment and plaster keying. This product features short and solid flanges for those who prefer it. This product is available with 3/8" (66SFC3), 1/2" (66SFC5), 5/8" (66SFC6), 3/4" (66SFC7), 7/8" (66SFC8) and 1" (66SFC1) grounds (1-1/4" and 1-1/2" special order, minimum quantities may apply). Available with either galvanized steel (HDG) or zinc* (ZNC). Also available with weep holes (66SFW).



PART NUMBER: SEE TEXT

*Zinc (ZNC) available special order, minimum quantities may apply.



SIZES AND PACKAGING

#66 Short & Expanded Flange (Standard Sizes)

Length	Pieces Per Carton	Cartons Per Pallet	Feet Per Carton
10'	30	40	300

UPC labeling available upon request

SIZES AND PACKAGING

#1 & #33

Length	Pieces Per Carton	Cartons Per Pallet	Feet Per Carton
8'	30	30	240
9'	30	30	270
10'	30	30	300
12'	30	30	360

UPC labeling available upon request

#40 EXPANSION JOINT

Phillips #40 Expansion Joint controls stresses in walls, ceilings, abutments, columns and partitions. Material will expand and contract from 1/4" to 5/8" openings. This two-piece versatile product works great with a variety of applications. Phillips offers this product in 1/2" (40ECJ5), 3/4" (40ECJ7) and 7/8" (40ECJ8) ground heights for your convenience with your choice of galvanized steel (HDG) or zinc* (ZNC).

*Zinc (ZNC) available special order, minimum quantities may apply.



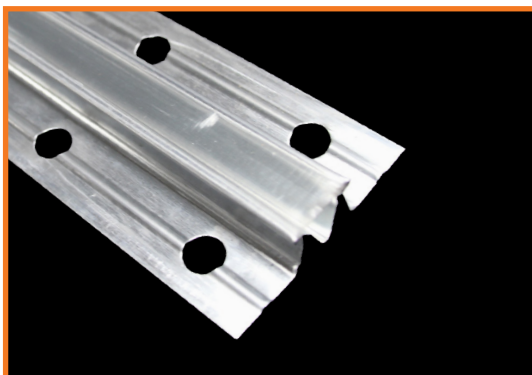
PART NUMBER: 40ECJ

SIZES AND PACKAGING

#40 (All Sizes)

Length	Pieces Per Carton	Cartons Per Pallet	Feet Per Carton
10'	15	25	150

UPC labeling available upon request



PART NUMBER: 50ECJ5ZNC-U

ZINC #50 EXPANSION CONTROL JOINT

The Phillips #50 zinc control joint resists corrosion on interior and exterior applications of plaster and stucco. It is used to relieve stresses of expansion and contraction during stucco curing and basic thermal changes, minimizing cracking. Clean up tape is provided for a neatly finished job.

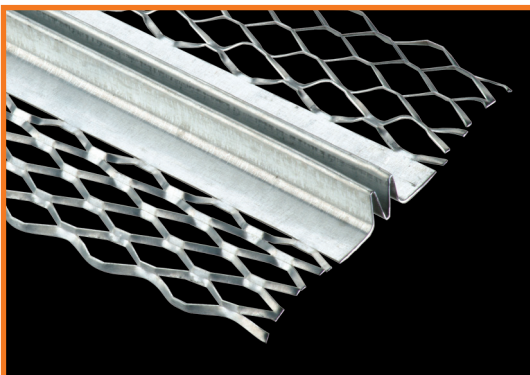
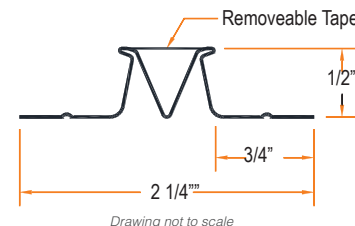
*Zinc (ZNC) available special order, minimum quantities may apply.

SIZES AND PACKAGING

#50 (All Sizes)

Length	Pieces Per Carton	Cartons Per Pallet	Feet Per Carton
10'	25	30	250

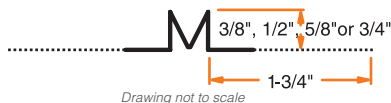
UPC labeling available upon request



PART NUMBER: SEE TEXT

#15 DOUBLE V EXPANSION CONTROL JOINT

Phillips #15 Double V Expansion Joint relieves the stresses of expansion and contraction associated with natural shrinkage during stucco curing and basic thermal changes. Phillips #15 minimizes cracking in large plaster areas and provides ground to assure proper plaster or stucco thickness. Expanded flanges allow for quality keying. Phillips offers this product in 3/8" (15ECJ3), 1/2" (15ECJ5), 5/8" (15ECJ6) and 3/4" (15ECJ7) (1/4" and 7/8" special order, minimum quantities may apply). Phillips #15 is available in either galvanized steel (HDG) or zinc* (ZNC).



SIZES AND PACKAGING

#15 Double V (1/2", 3/8")

Length	Pieces Per Carton	Cartons Per Pallet	Feet Per Carton
10'	24	40	240

#15 Double V (5/8", 3/4")

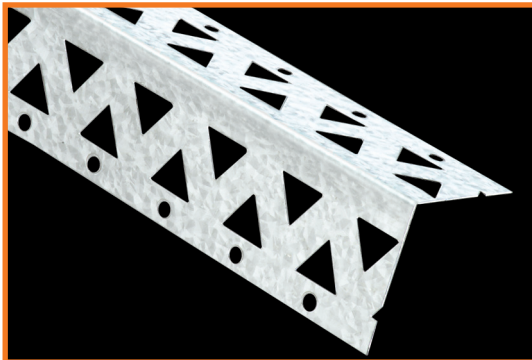
10'	24	30	240
-----	----	----	-----

UPC labeling available upon request

Phillips Metal Lath applications work great in stucco work. See page 38 for details.



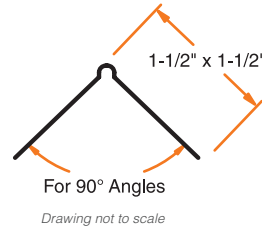
VENEER BEADS AND TRIMS



PART NUMBER: KALZRC

Kal-Korner® BEAD

Phillips Kal-Korner® bead is formed of galvanized steel to protect exterior corners with veneer plastering. Install using standard industry practice. This product is an alternative to the mini veneer bead. Kal-Korner® is a proven durable performer and can also be used in interior plaster applications.



Drawing not to scale

SIZES AND PACKAGING

Kal-Korner® Bead

Length	Pieces Per Carton	Cartons Per Pallet	Feet Per Carton
8'	60 OR 80	28	640
9'	60	28	540
10'	60	28	600
12'	60	28	720

UPC labeling available upon request

MINI VENEER BEAD

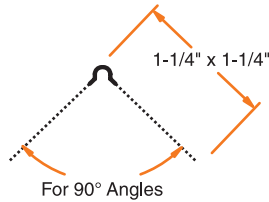
Phillips Mini Veneer Bead features fine mesh formed from hot-dipped galvanized steel to ensure clean, straight edges with veneer plastering. This product provides strong, durable finishes resistant to dents, gouges, abrasions and scuffs. Fully expanded flanges and rigid pronounced edges provide quality keying, superior bonding and eliminate shadowing. Install using standard industry practice.

SIZES AND PACKAGING

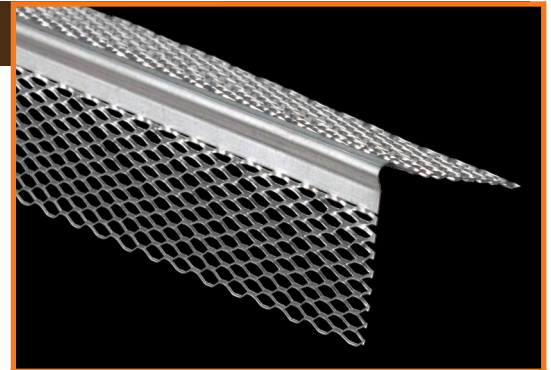
Mini Veneer Bead

Length	Pieces Per Carton	Cartons Per Pallet	Feet Per Carton
8'	60	25	480
10'	60	25	600

UPC labeling available upon request



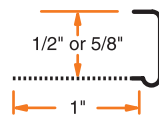
Drawing not to scale



PART NUMBER: EVCHDG

J-TRIM CASING BEAD

Phillips veneer J-Trim Casing Bead finishes edges at door and window jambs by slipping over the edge of plaster base. This galvanized steel product features a mini-mesh flange for plaster keying. Phillips offers this galvanized steel product in both 1/2" (VJ5HDG) and 5/8" (VJ6HDG) to suit many needs.



Drawing not to scale

SIZES AND PACKAGING

J-Trim (All Sizes)

Length	Pieces Per Carton	Carton Per Pallet	Feet Per Carton
10'	50	63	500

UPC labeling available upon request



PART NUMBER: SEE TEXT

L-TRIM CASING BEAD

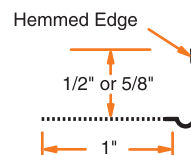
Phillips veneer L-Trim Casing Bead finishes edges at door and window jambs and features a hemmed edge for easy installation. This product features fully expanded mini-mesh for quality keying. Phillips offers this galvanized steel product in both 1/2" (VL5HDG) and 5/8" (VL6HDG) for your convenience.

SIZES AND PACKAGING

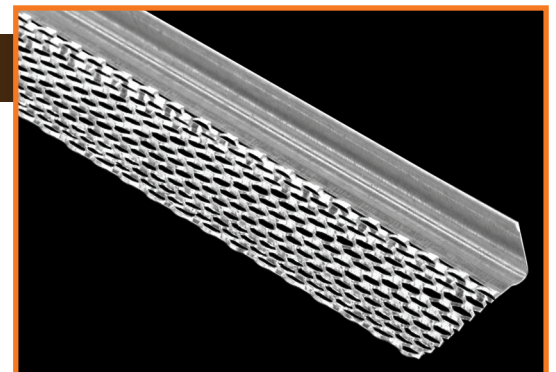
L-Trim (All Sizes)

Length	Pieces Per Carton	Cartons Per Pallet	Feet Per Carton
10'	50	60	500

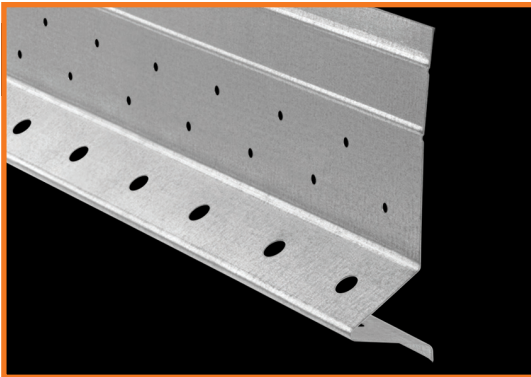
UPC labeling available upon request



Drawing not to scale



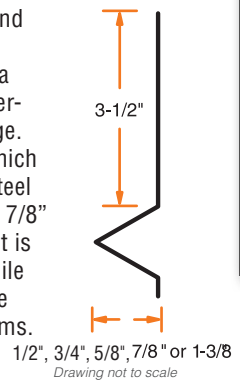
PART NUMBER: SEE TEXT



PART NUMBER: SEE TEXT

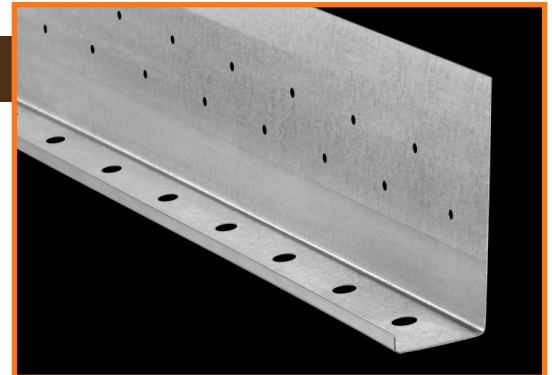
#7 FOUNDATION WEEP SCREED

Phillips #7 Foundation Weep Screed provides a stucco stop and screed for wood and masonry in exterior stucco applications. This product features a 3-1/2" nailing flange which serves as a straight-edge stop at the sill plate line and flashing when water-resistant paper or paper backed lath is installed over the flange. Phillips #7 Foundation Weep Screed is punched with holes which enable keying as well as moisture weeping. This galvanized steel product is available in 1/2" (WS5HDG), 3/4" (WS7HDG), 5/8", 7/8" (WS8HDG) and 1-3/8" (WS13HDG) grounds. The 7/8" product is typically used with 7/8" three coat cement stucco systems while the 1-3/8" product is typically used with one inch foam on one coat plaster systems or in exterior insulation and finish systems. Product also available in zinc.

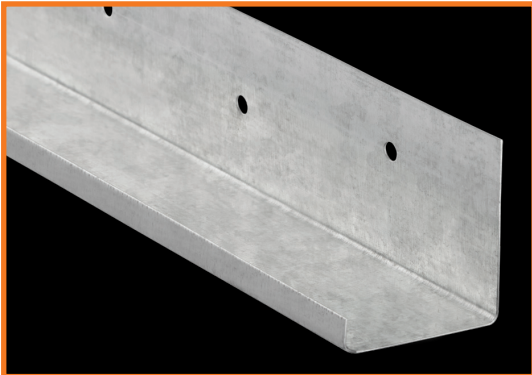


J-WEEP

Phillips J-Weep is a versatile product used in several applications. J-Weep is commonly used as a casing bead or plaster stop in stucco applications. The punched weep holes allow for usage as a sill weep screed in exterior stucco applications. This product features a 3-1/2" nailing flange meeting applicable code requirements. Perforated flanges aid attachment and plaster keying. This galvanized steel product is available in 3/8" (JW3HDG), 1/2" (JW5HDG), 3/4" (JW7HDG), 7/8" (JW8HDG), and 1-3/8" (JW13HDG) grounds (3/4" special order, minimum quantities may apply).*



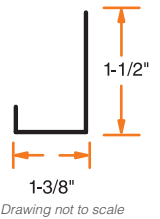
PART NUMBER: SEE TEXT



PART NUMBER: JLB13HDG

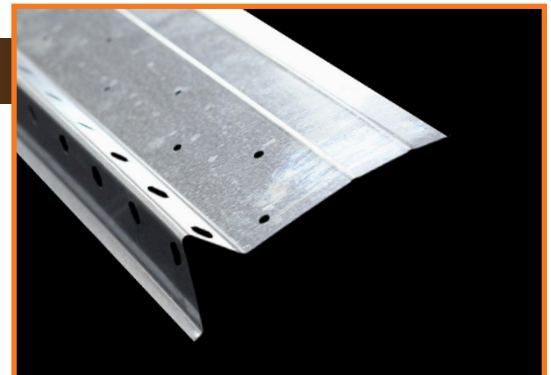
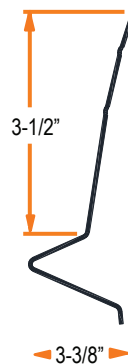
J-LOW BACK CASING

Phillips J-Low Back Casing is designed to be used as a plaster or casing stop bead with stucco at the top of doors and windows. J-Low Back Casing can be nailed, screwed or stapled to the frame or sheathing before installing metal lath over it. The extended ridge will provide a straight-edge stop for stucco. This galvanized steel product features a 1-1/2" nailing flange and is available in 1-3/8" ground. Available with weep holes upon request (JLW13HDG).



SHEAR SCREED

Shear screed is used like a regular foundation weep screed but covers the bottom edge of the sheathing in cases where shear walls are located. This helps to protect the edge of the sheathing from moisture and insect damage. Weep Screed is punched with holes which enable keying as well as moisture weeping. This product is made with galvanized steel.



PART NUMBER: SHS8HDG

SIZES AND PACKAGING

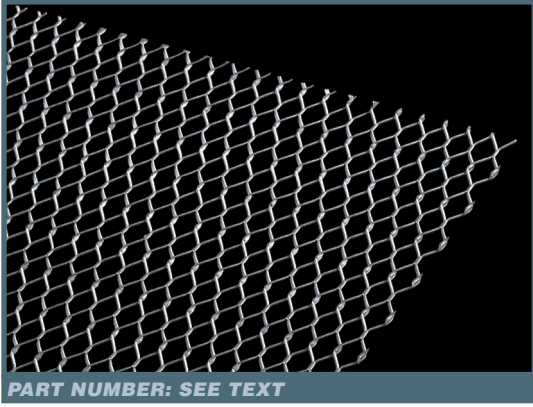
J-Weep, J-Low Back Casing & Shear

Length	Pieces Per Bundle	Bundles Per Pallet	Feet Per Bundle
10'	10	50	100

UPC labeling available upon request

*Packaging of special order grounds may vary.

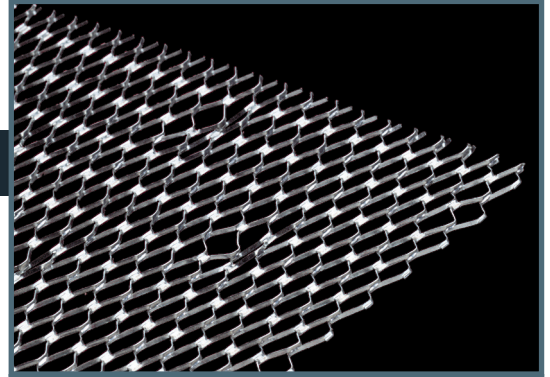
METAL LATH



PART NUMBER: SEE TEXT

FLAT DIAMOND MESH LATH

Phillips Flat Diamond Mesh Lath is used as a plaster base and reinforcement on almost all types of walls and ceilings, over wood or steel framing, flat or curved surfaces. The large number of openings provide for better stucco bonding in both pumped and troweled applications. This product is widely used as a reinforcement for base coat in ceramic tile work. This product is manufactured to specified weight with hot-dipped galvanized steel. Available in 1.75 (175GLHDG8), 2.5 (25GLHDG8) and 3.4 (34GLHDG8).



PART NUMBER: SEE TEXT

SELF-FURRING DIMPLED DIAMOND MESH LATH

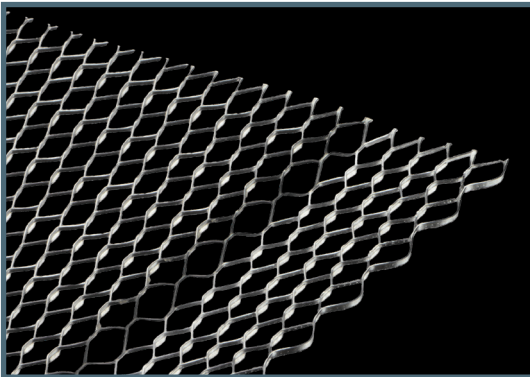
Phillips Self-Furring Dimpled Diamond Mesh Lath is used extensively in stucco work as plaster reinforcement over interior masonry walls as well as in steel column fireproofing. It is also widely used as a reinforcement for base coat in ceramic tile work. Self-Furring Diamond Mesh Lath is used over solid surfaces like concrete, cement board, column fireproofing, masonry and replastering over old surfaces. The self-furring dimples hold the metal lath 1/4" away from the surface to be plastered. The dimpled raised lath substrate provides superior mechanical bond over solid surfaces. This product is easily shaped for curved or contoured surfaces. The self-furring nature of the product helps applicators maintain plaster depths. This product features a hot-dipped galvanized finish. To maintain the designed furring characteristics, fasteners must be applied within the dimple cavity. Available in 1.75 (175SLHDG8), 2.5 (25SLHDG8) and 3.4 (34SLHDG8).

SIZES AND PACKAGING

Self-Furring & Flat Diamond Mesh Lath

Std Wt./ Sq. Yd.	Sheet Size	Pieces Per Bundle	Bundles Per Pallet	Sq. Yds. Per Bundle
1.75	27" x 97"	10	25	20
2.50	27" x 97"	10	25	20
3.40	27" x 97"	10	25	20

UPC labeling available upon request



PART NUMBER: SEE TEXT

SELF-FURRING V-GROOVE DIAMOND MESH LATH

Phillips Self-Furring V-Groove Diamond Mesh Lath is manufactured with approximately 1/4" deep grooves and 5 grooves per sheet to ensure thorough plaster penetration and strong mechanical bond. V-Groove Lath is easily shaped for curved or contoured surfaces like concrete, cement board, column fireproofing, masonry and replastering over old surfaces while maintaining consistent plaster depths and eliminating need for added furring strips. Available in 2.5 (25LHDG8VG) and 3.4 (34LHDG8VG) weight.

SIZES AND PACKAGING

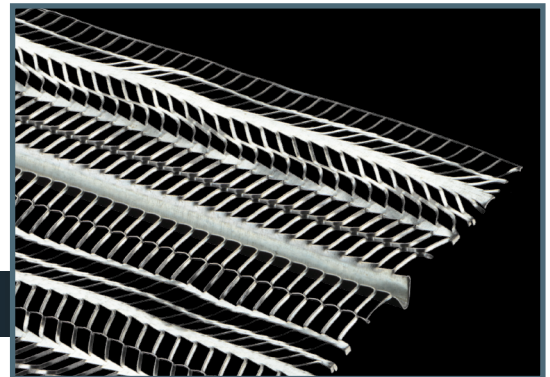
Self-Furring V-Groove Mesh Lath

Std Wt./ Sq. Yd.	Sheet Size	Pieces Per Bundle	Bundles Per Pallet	Sq. Yds. Per Bundle
2.50	27" x 97"	10	25	20
3.40	27" x 97"	10	25	20

UPC labeling available upon request

HIGH RIB LATH

Phillips High Rib Lath is ideal for horizontal applications with its seven, 3/8" deep, longitudinal V-shaped ribs running the length of the sheet at 4 1/2" intervals. Eight flat ribs provide additional rigidity. High Rib Lath is the most rigid of all laths and provides the added support required when framing more than 16" o.c. up to 24" o.c. The herringbone mesh pattern provides excellent bonding of the stucco to the lath for soffits and ceilings under steel or wood joist construction and metal-reinforced concrete floors. Available in 3.4 (34RLHDG8) weight.



PART NUMBER: SEE TEXT

SIZES AND PACKAGING

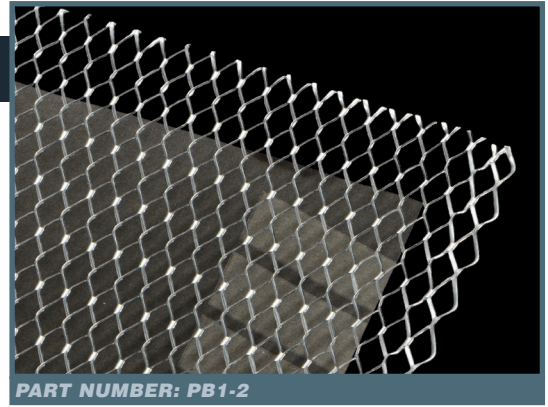
High Rib Lath

Std Wt./ Sq. Yd.	Sheet Size	Pieces Per Bundle	Bundles Per Pallet	Sq. Yds. Per Bundle
3.40	27" x 97"	10	50	20

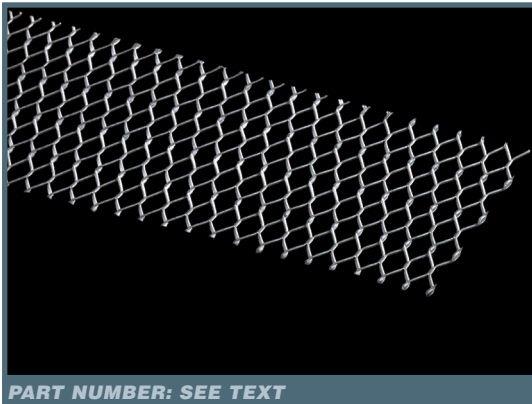
UPC labeling available upon request

PAPER BACK LATH

Asphalt saturated kraft building paper has been applied to the lath to control moisture, air flow and reduce air infiltration resulting in improved energy efficiency. Paper Back Lath is easy to install and ideal as a base for stone, ceramic tile and traditional stucco. The paper backing aids in plaster keying and stucco curing, protection of the sheathing during curing and forms the vertical surface behind the exterior wall cladding (stucco, brick, siding, etc.) that allows moisture to safely drain out of the wall system. The asphalt paper back breather sheet complies with Federal Specification UU-B-790A: Type 1, Grade D, Style 2 which is printed on the paper for easy identification. Paper Back is available with Flat Diamond Mesh Lath, Self-Furring Dimpled Diamond Mesh Lath and Self-Furring V-Groove Diamond Mesh Lath, Paper Backed Self Furring Diamond Mesh Lath and Paper Backed Flat Diamond Mesh Lath.



PART NUMBER: PB1-2



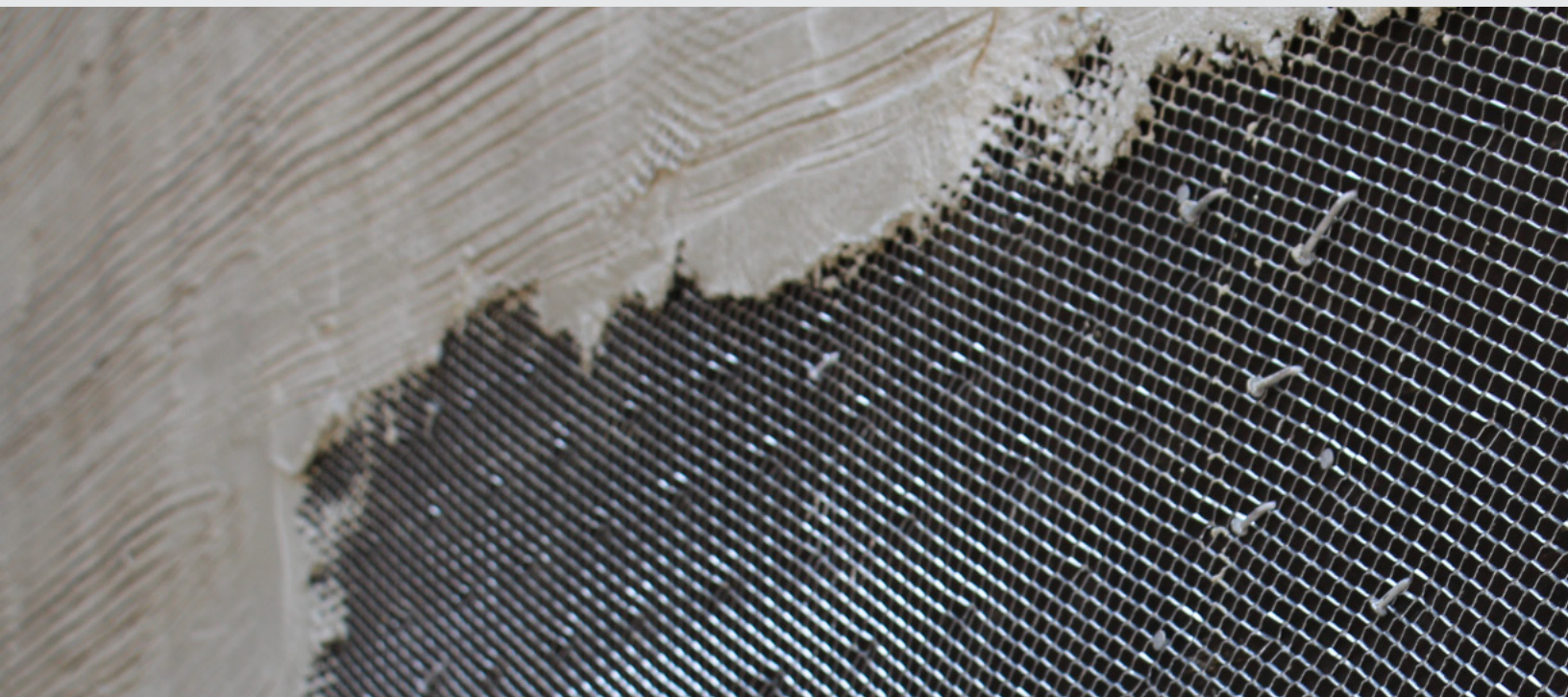
PART NUMBER: SEE TEXT

STRIP LATH

Phillips strip lath is a flat, expanded strip of metal lath strip used as plaster base and reinforcement in areas of solid bases and where uneven or dissimilar bases join. Typically attached diagonally at corners and windows, or other areas that are prone to cracking. This product is manufactured to specified weight with hot-dipped galvanized steel. Available in 6" (STL6HDG8) and 4" (STL4HDG8)

PACKAGING	
STRIP LATH	
Pieces Per Carton	Cartons Per Pallet
75	20

» **ITS THE PHILLIPS MISSION** *Lead the industry in delivering innovative products and services that add value to our customers and build their long-term success*

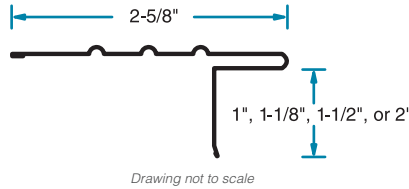


ROOF EDGE METAL



STYLE D ROOF EDGE

Phillips EDGEmaster® Style D Roof Edge is designed to protect and cover the exposed edge of the roof line. This product helps prevent water backup under the shingles and protects roofing from water damage along the entire eave. This product features hemmed edges for easy installation. Available in a variety of sizes and colors (see color guide). Packaging is 25 pieces per carton and 10' is standard length. Available in both 26 and 28 gauge.



Drawing not to scale

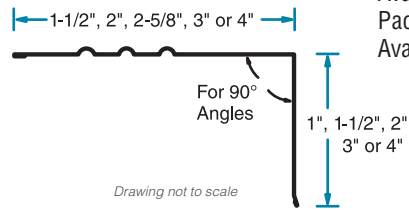


PART NUMBER: DREH

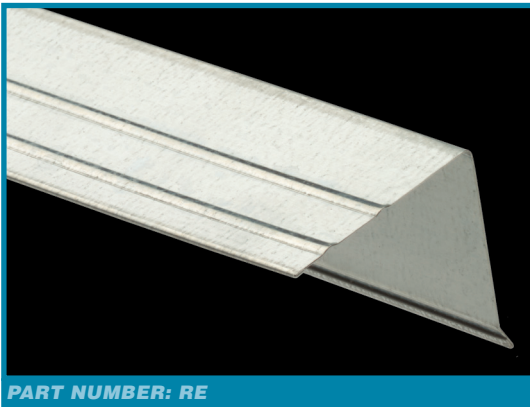
ROOF EDGE

Phillips EDGEmaster® Roof Edge is designed to protect and cover the exposed edge of the roof line. This product helps prevent water backup under the shingles and protects roofing from water damage along the entire eave. Available in a variety of sizes; visit www.phillipsmfg.com for a listing of part numbers. This product features hemmed edges for easy and safer installation.

Available in a variety of sizes and colors (see color guide). Packaging is 25 pieces per carton and 10' is standard length. Available in both 26 and 28 gauge.



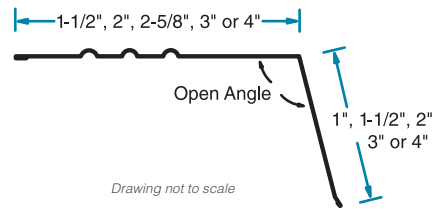
Drawing not to scale



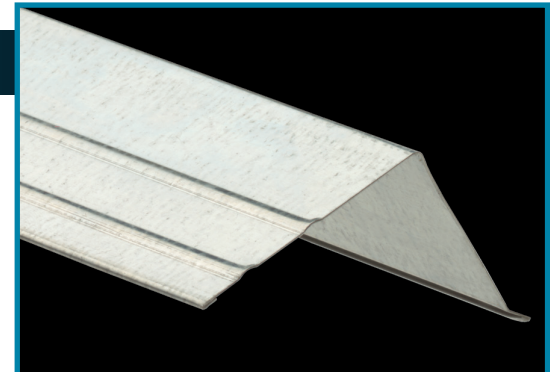
PART NUMBER: RE

GUTTER APRON (OPEN ANGLE)

Phillips EDGEmaster® Gutter Apron (Open Angle) is used to direct water into the gutter system. This product is installed over the roof edge and extends into the gutter. Phillips Gutter Apron is open angle or designed for roof edge angles greater than 90 degrees. Available in a variety of sizes; visit www.phillipsmfg.com for a listing of part numbers. This product features hemmed edges for safe and easy installation. Available in a variety of sizes and colors (see color guide). Packaging is 25 pieces per carton and 10' is standard length. Available in both 26 and 28 gauge.



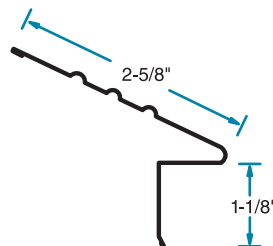
Drawing not to scale



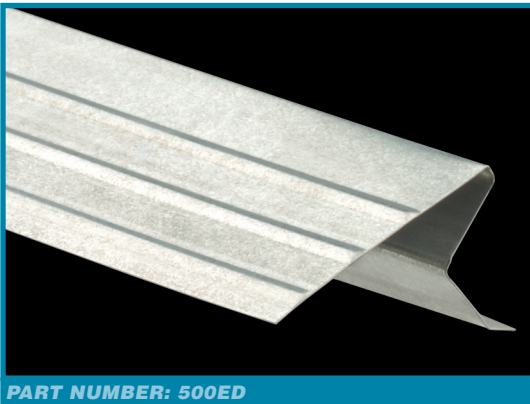
PART NUMBER: GA

EAVE DRIP

Phillips EDGEmaster® Eave Drip is designed to direct water into the gutter system by directing rain water run-off to drip away from fascia. This product is installed over the roof edge and extends into the gutter. This product features hemmed edges for easy installation. Available in a variety of sizes and colors (see color guide). Packaging is 25 pieces per carton and 10' is standard length. Available in both 26 and 28 gauge.

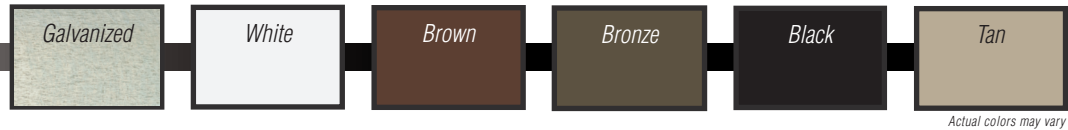


Drawing not to scale



PART NUMBER: 500ED

COLOR GUIDE

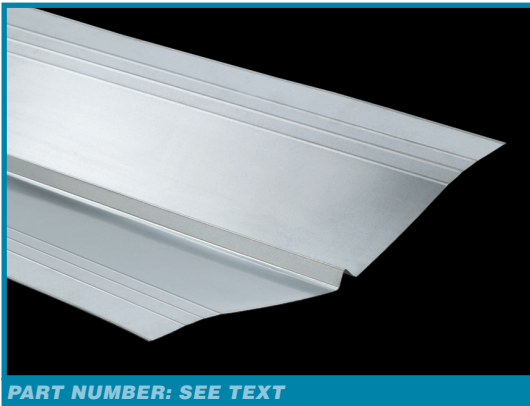


ROLL FLASHING

Phillips EDGEmaster® Roll Flashing is used for custom flashing and do-it-yourself projects. This product adds a customized look to any dormer or flashing piece. Available in a variety of colors (see color guide). Up to 24" width available. Standard widths are 24" (RF2400), 20" (RF2000), 18" (RF1800), 16" (RF1600), 14" (RF1400), 12" (RF1200), 10" (RF1000), 8" (RF800), 6" (RF600) and 4" (RF400). 10', 25' and 50' length rolls available.



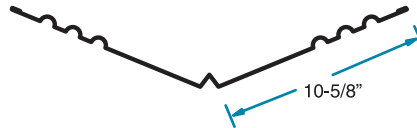
PART NUMBER: SEE TEXT



PART NUMBER: SEE TEXT

W-VALLEY

Phillips EDGEmaster® W-Valley is used in the roof valley area to channel water down into the gutters. This product features a small ridge in the middle to prevent run-off rain from running down one side of the roof and splashing up under shingles on the opposing side. This product is available in 24" width (WV24) as shown; standard width of 18" (WV18) and 20" (WV20) also available. Available in a variety of colors (see color guide). This product features hemmed edges for easy installation. Standard packaging is 100 pieces per pallet.

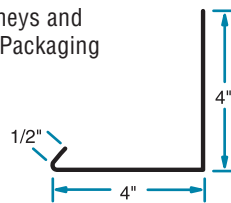


Drawing not to scale

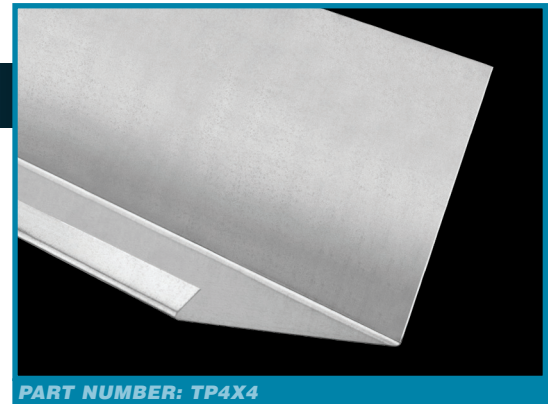
24" shown; other sizes available

TILE PAN (SIDEWALL FLASHING)

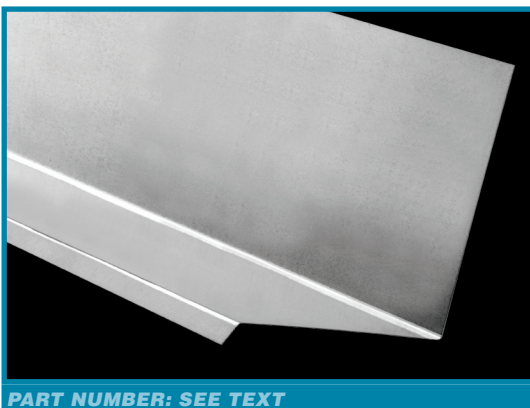
Phillips EDGEmaster® Tile Pan works great as flashing around chimneys and other applications. Available in a variety of colors (see color guide). Packaging is 10 pieces per bundle.



Drawing not to scale



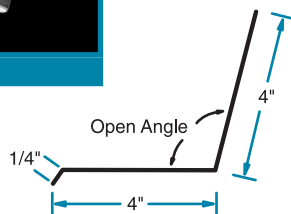
PART NUMBER: TP4X4



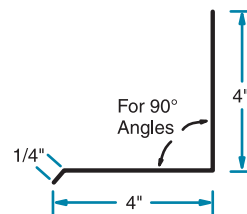
PART NUMBER: SEE TEXT

WALL (DORMER) FLASHING

Phillips EDGEmaster® Wall (Dormer) Flashing is designed to prevent the entry of water into the wall. Wall flashing is typically found at interruptions in the wall, such as windows and points of structural support. This product works great to prevent top edge of window or door openings from water infiltration. Wall (Dormer) Flashing is available in open angle (WF120) and regular for 90° angles (WF90). Available in a variety of sizes and colors (see color guide). Packaging is 10 pieces per bundle.



Drawing not to scale



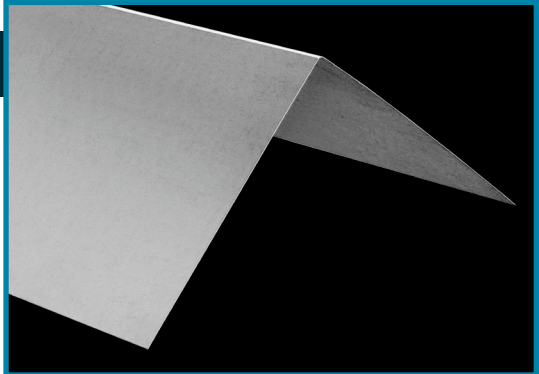
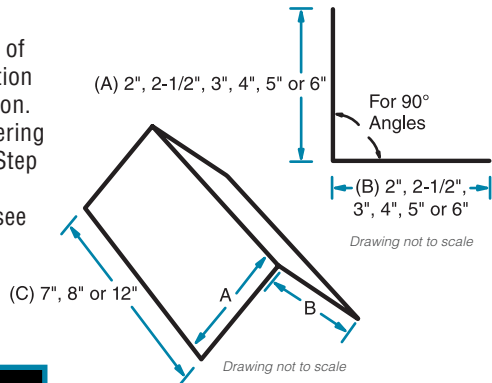
Drawing not to scale



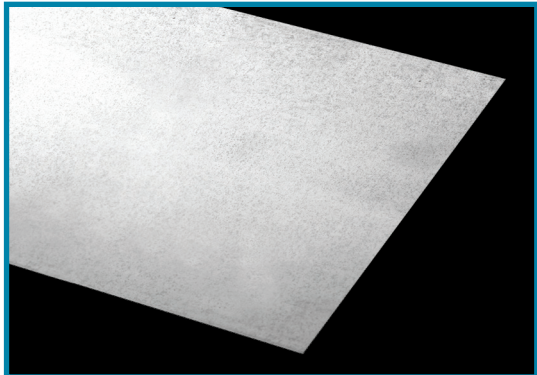


STEP FLASHING (PRE-BENT FLASHING SHINGLE)

Phillips EDGEmaster® Step Flashing (Pre-Bent Flashing Shingle) is used on the side of a shingle when it meets a vertical termination such as a wall, chimney or other termination. The product helps prevent water from entering between the shingle and the termination. Step Flashing is pre-bent for easy installation. Available in a variety of sizes and colors (see color guide). Packaging is 10 pieces per bundle and 100 per carton.



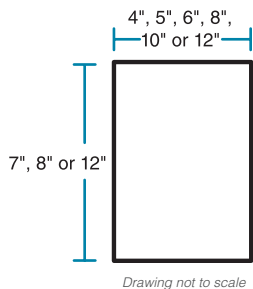
PART NUMBER: SF



PART NUMBER: FF

FLAT FLASHING SHINGLES

Phillips EDGEmaster® Flat Flashing Shingles are utility roofing metal products used in a variety of flashing applications. This product can be bent on the job to fit custom or fill in flashing requirements. Flat Flashing Shingles are available in a variety of sizes and colors (see color guide). Packaging is 10 pieces per bundle.

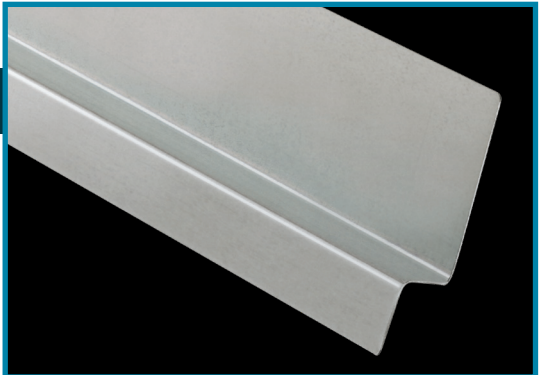


Z-FLASHING

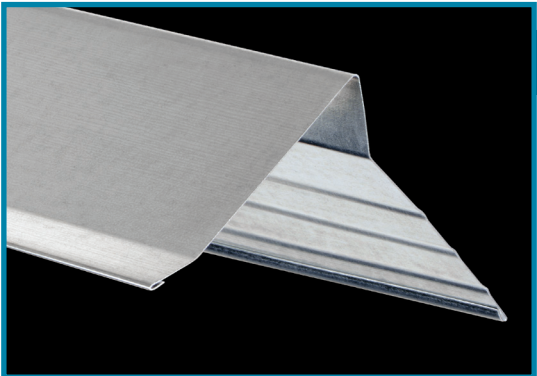
Phillips EDGEmaster® Z-Flashing is commonly used for preventing water penetration behind exterior siding and other residential applications. Available in a variety of colors (see color guide). Phillips offers this product in 7/16" and a variety of other sizes; ask your sales representative for details on sizes offered. Packaging is 10 pieces per bundle.



7/16" shown; other sizes available



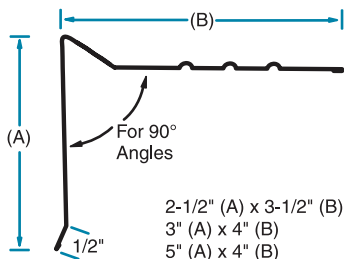
PART NUMBER: ZF



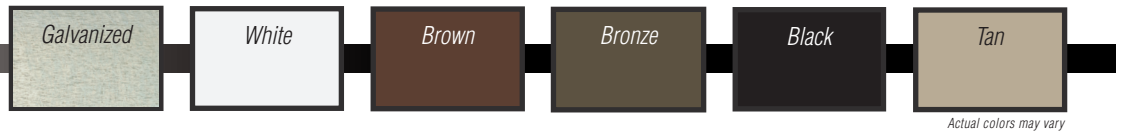
PART NUMBER: SEE TEXT

GRAVEL STOP

Phillips EDGEmaster® Gravel Stop is designed for commercial applications to seal the roof and prevent gravel and roof tar from washing over the roof line. It is manufactured in 10' lengths that provide fewer joints and seams with fewer pieces. This product is available in 2-1/2" x 3-1/2" (GS25X35), 3" x 4" (GS30X40) and 5" x 4" (GS50X40) and comes in a variety of colors (see color guide). Packaging is 10 pieces per bundle.

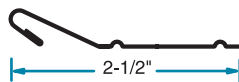


COLOR GUIDE



2-1/2" STARTER STRIP

Phillips EDGEmaster® 2-1/2" starter strip product is used as a permanent siding part. Starter strip, as the name implies, is the first part installed when putting permanent siding onto a home. It is installed level and at the lowest point of the original sheathing. This gives the first row of siding something to hook on to. Starter strip is an extremely important part of a siding job. If the starter strip is not installed level to the eave, the siding will appear to go up or down hill. This product is only available in hot-dipped galvanized finish. Starter strip is also available in 3-1/2" and 3/4" offset.



Drawing not to scale



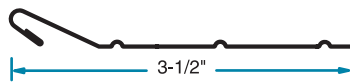
PART NUMBER: SS250-28HDG



PART NUMBER: SS350-28HDG

3-1/2" STARTER STRIP

Phillips EDGEmaster® 3-1/2" starter strip product is used as a permanent siding part. Starter strip, as the name implies, is the first part installed when putting permanent siding onto a home. It is installed level and at the lowest point of the original sheathing. This gives the first row of siding something to hook on to. Starter strip is an extremely important part of a siding job. If the starter strip is not installed level to the eave, the siding will appear to go up or down hill. This product is only available in hot-dipped galvanized finish. Starter strip is also available in 2-1/2" and 3/4" offset.



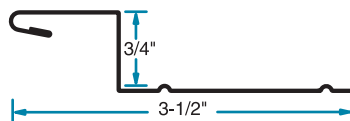
Drawing not to scale



PART NUMBER: SS750S-28HDG

3/4" OFFSET STARTER STRIP

Phillips EDGEmaster® 3/4" offset starter strip products is used as a permanent siding part. Starter strip, as the name implies, is the first part installed when putting permanent siding onto a home. It is installed level and at the lowest point of the original sheathing. This gives the first row of siding something to hook on to. The 3/4" offset is used when 3/4" insulation is installed after the starter strip. Starter strip is an extremely important part of a siding job. If the starter strip is not installed level to the eave, the siding will appear to go up or down hill. This product is only available in hot-dipped galvanized finish. Starter strip is also available in 2-1/2" and 3-1/2".



Drawing not to scale



**CORPORATE OFFICE**

4949 S. 30th Street
Omaha, NE 68107
402.339.3800 Office
402.339.0772 Fax

PHOENIX OFFICE & WAREHOUSE

111 E. Maricopa FWY
Phoenix, AZ 85034
602.253.9320 Office
602-253-3199 Fax

NILES PLANT

504 Walnut Street
Niles, OH 44446
330.652.4335 Office
800.252.7692 Fax

TAMPA PLANT

8419 Sabal Industrial BLVD
Tampa, FL 33619
813-319-0931 Office
813.319.0933 Fax

SACRAMENTO WAREHOUSE

2934 Ramo St., Suite 120
West Sacramento, CA 95691
916.620.7129 Office
916.246.6244 Fax

UMATILLA PLANT

38051 Florida 19
Umatilla, FL 32784
352.669.8204 Office
352.669.1571 Fax

ASTM DESIGNATION FOR C1047

Standard Specification for Accessories Gypsum Wallboard and Gypsum Veneer Base

Drywall Metal Beads and Trims

Corner Bead
Bullnose Corner Bead
J-400, L-200, U-200
kwikSTIK® Paper Faced Metal Beads and Trims*
gripSTIK® Vinyl Corner Beads and Trims
093 Expansion Control Joint

ASTM DESIGNATION FOR C1063 & C847**Conventional Plaster Accessories**

#1 Expanded Corner Bead
#15 Double V Expanded Joint
#30 Double V Corner Expansion Joint
#33 Wide Flange Expanded Bead
#40 Expansion Joint
#66 Expanded Flange Square Casing
#66 Short Flange Square Casing

Veneer Beads and Trims

Mini Veneer Bead
Kal-Korner®
J-Trim Casing Bead
L-Trim Casing Bead

*With exceptions as noted in product literature.

ASTM DESIGNATION FOR C645

Standard Specification for Nonstructural Steel Framing Members

Channels

Cold Rolled Channel (16 Gauge)
Standard Duty Resilient Channel (RC-1)
Tru-25® Gauge Resilient Channel (RC-1)
Weath-Ex® Tru-25® Gauge Resilient Channel (RC-1)
2 Legged Expanded Resilient Channel (RC-2)
Z-Furring Channel

Metal Angle

Knurled Angle Runner 90°

Metal Flat Stock

Knurled Cabinet Backing (Flat Strap)

Studs and Tracks

25 and 20 Gauge Studs and Tracks
H-Studs and U-Tracks
J-Tracks

ASTM DESIGNATION FOR C955

Standard Specification for Load Bearing Steel Studs, Runners and Bracing or Bridging for Screw Application of Gypsum Panel Products and Metal Plaster Bases

Structural Framing Products

Structural Studs & Tracks

ASTM DESIGNATION FOR A653

Standard Specification for Steel Sheet, Zinc-Coated (Galvanized) or Zinc-Iron Alloy Coated (Galvannealed) by the Hot-Dip Process

Coatings

Galvannealed
Hot-Dip Galvanized



» LEED® Certification

Phillips Manufacturing Co. understands the importance of recycling and manufactures all of its products utilizing materials with recycled content. Phillips Manufacturing's products contain a minimum of **30% total recycled content** (25% post-consumer and 5% pre-consumer). Using Phillips products can contribute to several LEED® points under the Materials and Resources category.

- » **MR Credits 2.1 & 2.2 Construction Waste Management. Recycling construction waste contributes to LEED® credits MR 2.1 & 2.2 and cold formed steel is 100% recyclable.**
- » **MR Credits 4.1 & 4.2 Recycled Content**
- » **MR Credits 5.1 and 5.2 Regional Materials**

To request a project specific LEED® letter, please visit our website at PHILLIPSmfg.com

» Additional Information Available at:

www.PHILLIPSmfg.com

Phillips is dedicated to providing you the most up to date information on our website including:

Need a submittal package? Visit EZSubmittal.phillipsMFG.com to use the free and mobile friendly tool.

- » PDF Product Catalog
- » Interactive Digital Catalog
- » Packaging Sheets
- » Assembly Drawings
- » Material Certifications
- » Spanish-English Product Guide
- » 3-Part Specifications
- » Installation Recommendations
- » LEED® Form
- » MSDS Sheets
- » Press Releases
- » Sound Transmission Control

» **Connect With Phillips:**    

#1 Expanded Corner Bead	36
#7 Foundation Weep Screed	37
#15 Double V Expansion Joint	35
#33 Wide Expanded Flange Bead	34
#40 Expansion Joint	35
#66 Expanded Flange Square Casing	34
#66 Short Flange Square Casing	34
093 Expansion Joint	11
180FLEXKorner™	16
2-Way Corner Cap	18
2-Way Splay Corner Cap	18
3-Way Corner Cap	17
3-Way Splay Corner Cap	17

- A -

Adjustable Inside Corner	16
Angle Flashing	40-42
Archway Corner Bead (Arch Bead) & Trim	12, 14, 19

- B -

Bullnose Corner Bead	
Metal	8-10
Paper Faced	24-27
Vinyl	13-15
Bullnose Corner & Transition Caps	17-18
Bullnose J-Round	10

- C -

C-Studs	31
Casing Bead	34, 36
Channels	29-31, 34
Clips	33
Cold Rolled Channels	30
Control Joints	11, 16, 35
Corner Beads	
Metal	6-10
Paper Faced	21-27
Stucco	34
Veneer	36
Vinyl	12-15
Customer Service and Care	2-4

- D -

Diamond Mesh Lath	38
Double V Expansion Joint #15	35
Drywall Furring Channel	29-30
Drywall Hemmed Track	31, 33
Drywall Studs	31
Drywall Track	31

- E -

Eave Drip	40
EDGEmaster® Roofing Metals	40-42
Everlast® Corner Bead	6-9
Expanded Corner Bead #1	34
Expanded Flange Square Casing #66	34
Expansion Joint #15	35
Expansion Joint #40	35
Expansion Joint 093	11
Expansion Control Joint E-Z Strip® (Vinyl)	16

Extra Wide Vinyl Corner Bead	12
E-Z Strip® Expansion Control Joint (Vinyl)	16

- F -

Fire Rated Assemblies	33
First Choice Metal Corner Bead	6-7
Flashing	40-43
Flat Diamond Mesh Lath	38
Flat Flashing Shingles	42
Flat L-Tear Strip	20
Flat Strap	32
Foundation Weep Screed	37
Furring Channels	29-30

- G -

gripSTIK® Vinyl Products	12-20
Gravel Stop	42
Gutter Apron (Open Angle)	40

- H -

H-Stud	34
Hat Channel	29
Hemmed Furring Channel	29
Hemmed H-Stud	33
Hemmed Track	31, 33
High Hat Channel	3
High Rib Lath	38
Hot-Dipped Galvanized Corner Bead	6-10

- I -

Inside Corner Adjustable	16
Inside Corner Bead	
Paper Faced	27
Vinyl	16
Interior Framing	31-32

- J -

J-Low Back Casing	3
J-Round	10
J-Track	35
J-Trim	11, 19, 32
J-Weep	37

- K -

Kal-Korner® Bead	36
Kerfed Bullnose	
Metal	10
Vinyl	15
klinchSTIK® Metal Corner Bead	6
Knurled Angle Runner (Utility Angle)	30
kwikSTIK® Paper Faced Products	21-27

- L -

L-Tear Strip	20
L-Trim	
Metal	11
Paper Faced	27
Veneer	36
Vinyl	19
Lath	38-39

LEED® Certification5

- M -

Masonry Screed37
 Material Certification5
 MAX-Flex® Archway 12, 14, 19
 Mesh Lath38
 Metal Angle Runner31
 Metal Beads & Trims6-11
 Metal Corner Beads6-10
 Metal Framing31
 Metal Lath 38-39
 Metal Studs31
 Metal Track31, 33
 Metal Trims 11
 Mini Bullnose13
 Mini Veneer Bead36
 Mud Hopper23
 Mudable Trims 11
 Multipurpose Spray Adhesive20

- N -

Nail-On Paper Faced Beads26
 Nail-On Square Bead26
 No Bead Paper Faced Metal21-22, 27
 Nonload Bearing31, 33
 Nonstructural Framing 31, 33
 Nonstructural Studs31

- O -

Open Angle Splay Corner Bead
 Metal7, 9
 Paper Faced 23-27
 Vinyl12, 14

- P -

Pan Flashing41
 Paper Back Lath39
 Paper Faced Metal Corner Beads21-27
 Paper Faced Metal Products21-27
 Paper Faced Metal Trims27
 Partition Angle30
 Phillips Advantage3
 Plant Locations 2-3
 Plaster Beads & Trims 34-36
 Plaster Casing Beads 34-36
 Plaster Control Joints39
 Plaster Corner Beads34, 36
 Pre-Bent Flashing42
 Product Specifications3

- R -

RC-1 and RC-228
 RC-XL28
 Reveal Trim12
 Res Bar28
 Resilient Sound Channel28
 Roll Flashing41
 Roof Edge40
 Roofing Metals 40-43

- S -

Self-Furring Dimpled Diamond Mesh Lath38
 Self-Furring V-Groove Diamond Mesh Lath38
 ShadowFree® Metal Products 6-9
 Short Flange Square Casing #6634
 Siding Accessories43
 Splayed Corner Bead
 Metal7, 9
 Paper Faced 23-27
 Vinyl12, 14
 Spray Adhesive20
 Standards3
 Starter Strips46
 Step Flashing42
 Stucco Casing Beads34
 Stucco Control Joint35
 Strap32
 Studs, Steel31, 33
 Style D Roof Edge40

- T -

Tabbed J-Track33
 Tape-On Paper Faced Beads21-25
 Tape-On Paper Faced Trims27
 Tile Pan (Sidewall Flashing)41
 Tracks31, 33
 Transition Caps18
 Trim Products
 Metal11
 Paper Faced Metal27
 Vinyl19

- U -

U-Channel31, 33
 U-Track35
 U-Trim11
 Uneven Leg Paper Bead23
 Utility Angle30

- V -

V-Groove Diamond Mesh Lath38
 Veneer 36-37
 Veneer Beads & Trims 36-37
 Veneer Casing Beads36
 Veneer Corner Beads36
 Vinyl12-20
 Vinyl Adaptors18
 Vinyl Beads & Trims 12-20
 Vinyl Finishing Products 19-20

- W -

Wall (Dormer) Flashing41
 W-Valley41
 Weep Screed37
 Weep Hole Casing Bead34
 Wide Expanded Flange Bead #3334
 Wide Hat Channel29

- Z -

Z-Flashing42
 Z-Furring Channel30
 Zinc Control Joints35
 Zinc Veneer and Stucco Products 34-37



Headquarters & Manufacturing Plant:
Omaha, NE

Office & Manufacturing Plant:
Niles, OH

Manufacturing Plant:
Tampa, FL

Manufacturing Plant:
Umatilla, FL

Office & Distribution Warehouse:
Phoenix, AZ

Office & Distribution Warehouse:
West Sacramento, CA

PHILLIPSMFG.COM
800.822.5055

Printed in USA.

Copyright © 2018 Phillips Manufacturing Co.
All rights reserved.

REG01/18



CENTRALIA, IL
866.755.7636

MOBERLY, MO
800.892.5850

MT. PLEASANT, IA
800.258.5809

SPRING HILL, KS
800.490.4320

Proudly
Supplied
By

