



HARDWARE & HINGES CATALOG



Phone 757.498.0186 • **Toll Free** 800.537.3497 • **Fax** 757.498.1075

PenrodHardware@ThePenrodCompany.com • ThePenrodCompany.com



- PAYMENT TERMS** 1% 10 days, Net 30 days after date of invoice. A service charge of 2% per month will be assessed for past due accounts (or applicable state law)
- SHIPMENT** Orders with a net value of \$800 are shipped freight paid. Orders with a value of less than \$800 are shipped with freight billed to customer. Orders with a net value of less than \$200 are subject to a \$50 handling charge. There will be a broken box fee of \$25 per broken box item.
- CREDIT** Orders are subject to credit approval by Penrod.
- RETURNS** A handling and restock charge of 30% will be applied to all returns and the cost of the return freight. No returns will be accepted unless approved by Penrod. Credit will only be issued for goods received in acceptable condition.
- PRICING** Prices are subject to change without notice.

LIMITED WARRANTY

The Penrod Company warrants its products against manufacturing defects under normal use for a period of one year after delivery. This warranty does not cover defects or damage due to improper use or handling of material, ordinary wear and tear or any misuse. The liability shall be limited to replacement or repair of any product supplied by Penrod. Penrod will accept no claims unless given proper notice and an opportunity to examine the claimed material and installation.

Warranty will automatically be considered void for hinges and hardware subjected to any foreign substances or cleaning agents other than a mild warm water and soap solution. This solution must be wiped off the hinges with a dry clean rag immediately following use.

TABLE OF CONTENTS

HINGES	PAGE
3.5" Interior	1-7
4.0" Taylor Prep	7-19
4.0" Masonite Prep	20-38
4.0" Self Aligning Therma Tru Prep	39-40
4.0" Timely Prep	40-41
Spring Hinges	42-47

HARDWARE	PAGE
Ball and Roller Catches	48-50
Magnetic Catch Plate	50
Door Stops	50-51
Door Viewers	51
Flush Bolts	53-55
2 1/8" Finger Pulls	55
Hand Rail Brackets	56
Jamb Reinforcement Plate	57
Pole Sockets	57
Slide Bolts	58
Shelf and Shelf Rod Supports	59
Dummy Leaves	60

SCREWS	PAGE
#6 x 3/4"	61
#9 x 5/8"	61
#9 x 3/4"	62
#9 x 1"	62
#9 x 1 1/4"	63
#9 x 2 1/4"	63
#9 x 2 3/4"	64
#9 x 3"	64
#10 x 1/2"	65
#10.24 x 5/8"	65
#10 x 5/8"	66
#10 x 3/4"	66
#10 x 1"	66
#10 x 2"	67

COMMERCIAL HINGES	PAGE
3.5" Square Corner Hinges	68
4.0" Hinges	68-72
4.5" and 5" Square Corner Hinges	73-77
Spring Pivots	77-78
Double Acting Spring Hinges	78-79

3.5" x 3.5" 5/8" RADIUS x 5/8" RADIUS ASSEMBLED

BULK PACKED 100 PIECES PER MASTER



ITEM#	DESCRIPTION	CODES	REFERENCE
M10052	ANTIQUE BRASS	US5	MH3.5AUIIN5/8-5/8AB
M16088	ANTIQUE NICKEL	US15A	MH3.5AUIIN5/8-5/8AN
M10057	BRIGHT BRASS	US3	MH3.5AUIIN5/8-5/8BB
M26005	BRUSHED ZINC	US2BZ	MH3.5AUIIN5/8-5/8BZ
M10084	BRIGHT CHROME	US26	MH3.5AUIIN5/8-5/8CM
M18180	COLONIAL BRONZE - DARK	US10BD	MH3.5AUIIN5/8-5/8CB
M10089	DULL BRASS	US4	MH3.5AUIIN5/8-5/8DB
M10156	DULL CHROME	US26D	MH3.5AUIIN5/8-5/8DC
M20887	DULL NICKEL	LUS15	MH3.5AUIIN5/8-5/8DN
M17939	FLAT BLACK	US19	MH3.5AUIIN5/8-5/8FB
M10163	LIGHT BRASS	US3-4	MH3.5AUIIN5/8-5/8LB
M10168	OIL RUBBED BRONZE - LIGHT	US10B	MH3.5AUIIN5/8-5/8OB
M17223	SATIN NICKEL	US15	MH3.5AUIIN5/8-5/8SN
M10175	WHITE PRIMED	USP	MH3.5AUIIN5/8-5/8WP
M10177	ZINC DICHROMATE	US2D	MH3.5AUIIN5/8-5/8ZC
M26462	OLD WORLD BRONZE	OWB	MH3.5AUIIN5/8-5/8OWB
M27079	POLISHED NICKEL	US14	MH3.5AUIIN5/8-5/8PN
M27663	FINE SATIN BRASS	US7	MH3.5AUIIN5/8-5/8STB

3.5" x 3.5" 1/4" RADIUS x 1/4" RADIUS ASSEMBLED

BULK PACKED 100 PIECES PER MASTER



ITEM#	DESCRIPTION	CODES	REFERENCE
M10019	ANTIQUE BRASS	US5	MH3.5AUIIN1/4-1/4AB
M24949	ANTIQUE NICKEL	US15A	MH3.5AUIIN1/4-1/4AN
M10022	BRIGHT BRASS	US3	MH3.5AUIIN1/4-1/4BB
M10030	BRIGHT CHROME	US26	MH3.5AUIIN1/4-1/4CM
M18181	COLONIAL BRONZE - DARK	US10BD	MH3.5AUIIN1/4-1/4CB
M10032	DULL BRASS	US4	MH3.5AUIIN1/4-1/4DB
M10042	DULL CHROME	US26D	MH3.5AUIIN1/4-1/4DC
M10044	LIGHT BRASS	US3-4	MH3.5AUIIN1/4-1/4LB
M18982	SATIN NICKEL	US15	MH3.5AUIIN1/4-1/4SN
M10047	WHITE PRIMED	USP	MH3.5AUIIN1/4-1/4WP
M27068	OLD WORLD BRONZE	OWB	MH3.5AUIIN1/4-1/4OWB
M26559	FLAT BLACK	US19	MH3.5AUIIN1/4-1/4FB

3.5" x 3.5"
5/8" RADIUS x 5/8" RADIUS
ASSEMBLED BOXED

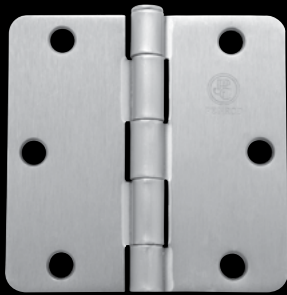
PACKED 2 PIECES PER INNER AND 100 PIECES PER MASTER
 EACH INNER PACKED WITH 12 #9 x 3/4 SCREWS



ITEM#	DESCRIPTION	CODES	REFERENCE
M24703	ANTIQUÉ BRASS	US5	MH3.5AUIIN5/8-5/8ABBOX
M10056	ANTIQUÉ NICKEL	US15A	MH3.5AUIIN5/8-5/8ANBOX
M10081	BLACK PRIMED	US1D	MH3.5AUIIN5/8-5/8BPBOX
M24701	BRIGHT BRASS	US3	MH3.5AUIIN5/8-5/8BBBOX
M24837	BRIGHT CHROME	US26	MH3.5AUIIN5/8-5/8CMBOX
M24704	COLONIAL BRONZE - DARK	US10BD	MH3.5AUIIN5/8-5/8CBBOX
M24700	DULL BRASS	US4	MH3.5AUIIN5/8-5/8DBBOX
M24702	DULL CHROME	US26D	MH3.5AUIIN5/8-5/8DCBOX
M20712	FLAT BLACK	US19	MH3.5AUIIN5/8-5/8FBBOX
M24705	SATIN NICKEL	US15	MH3.5AUIIN5/8-5/8SNBOX
M10174	STAINLESS STEEL	US32D	MH3.5AUIIN5/8-5/8SSBOX
M10170	SOLID BRASS	US3	MH3.5AUIIN5/8-5/8SB

3.5" x 3.5"
1/4" RADIUS x 1/4" RADIUS
ASSEMBLED BOXED

PACKED 2 PIECES PER INNER AND 100 PIECES PER MASTER
 EACH INNER PACKED WITH 12 #9 x 3/4 SCREWS



ITEM#	DESCRIPTION	CODES	REFERENCE
M24866	ANTIQUÉ BRASS	US5	MH3.5AUIIN1/4-1/4ABBOX
M10026	BRIGHT BRASS	US3	MH3.5AUIIN1/4-1/4BBBOX
M24835	COLONIAL BRONZE - DARK	US10BD	MH3.5AUIIN1/4-1/4CBBOX
M24836	DULL BRASS	US4	MH3.5AUIIN1/4-1/4DBBOX
M24834	DULL CHROME	US26D	MH3.5AUIIN1/4-1/4DCBOX
M24833	FLAT BLACK	US19	MH3.5AUIIN1/4-1/4FBBOX
M16627	SATIN NICKEL	US15	MH3.5AUIIN1/4-1/4SNBOX

3.5" x 3.5"
1/4" RADIUS x 1/4" RADIUS
ASSEMBLED BOXED



PACKED 2 PIECES PER PER INNER AND 100 PIECES PER MASTER
 EACH INNER PACKED WITH 12 #9 X 1/2" (WITH #10 HEAD) MACHINE SCREWS
 AND 12 #9 X 3/4" WOOD SCREWS
 TIMELY PREP

ITEM#	DESCRIPTION	CODES	REFERENCE
M17461	DULL CHROME	US26D	MH3.5AUNI1/4-1/4DCTBX

3.5" x 3.5"
5/8" RADIUS x 5/8" RADIUS
ASSEMBLED BALL BEARING



BULK PACKED 100 PIECES PER MASTER

ITEM#	DESCRIPTION	CODES	REFERENCE
M16966	ANTIQUE BRASS	US5	MH3.5BBIN5/8-5/8AB
M16260	ANTIQUE NICKEL	US15A	MH3.5BBIN5/8-5/8AN
M24688	BLACK PRIMED	US1D	MH3.5BBIN5/8-5/8BP
M10207	BRIGHT BRASS	US3	MH3.5BBIN5/8-5/8BB
M16261	BRIGHT CHROME	US26	MH3.5BBIN5/8-5/8CM
M18385	COLONIAL BRONZE - DARK	US10BD	MH3.5BBIN5/8-5/8CB
M16524	DULL BRASS	US4	MH3.5BBIN5/8-5/8DB
M16262	DULL CHROME	US26D	MH3.5BBIN5/8-5/8DC
M24674	FLAT BLACK	US19	MH3.5BBIN5/8-5/8FB
M16284	OIL RUBBED BRONZE - LIGHT	US10B	MH3.5BBIN5/8-5/8OB
M16971	SATIN NICKEL	US15	MH3.5BBIN5/8-5/8SN
M20090	ZINC DICHROMATE	US2D	MH3.5BBIN5/8-5/8ZC
M27072	OLD WORLD BRONZE	OWB	MH3.5BBIN5/8-5/80WB
M27080	POLISHED NICKEL	US14	MH3.5BBIN5/8-5/8PN
M27664	FINE SATIN BRASS	US7	MH3.5BBIN5/8-5/8STB

3.5" x 3.5" SQUARE CORNER ASSEMBLED END CAP BOXED

PACKED 2 PIECES PER INNER AND 100 PIECES PER MASTER
EACH INNER PACKED WITH 12 #9 x 3/4" SCREWS



ITEM#	DESCRIPTION	CODES	REFERENCE
M25337	ANTIQUE BRASS	US5	MH3.5AUINSQ-SQ ABBOX CAP
M25340	ANTIQUE NICKEL	US15A	MH3.5AUINSQ-SQ AN BOX CAP
M25336	BRIGHT BRASS	US3	MH3.5AUINSQ-SQ BBBOX CAP
M25342	BRIGHT CHROME	US26	MH3.5AUINSQ-SQ CM BOX CAP
M25343	DULL CHROME	US26D	MH3.5AUINSQ-SQ DC BOX CAP
M25341	FLAT BLACK	US19	MH3.5AUINSQ-SQ FB BOX CAP
M25344	SATIN NICKEL	US15	MH3.5AUINSQ-SQ SN BOX CAP
M25341	FLAT BLACK	US19	MH3.5AUINSQ-SQ FB BOX CAP
M25344	POLISHED NICKEL	US14	MH3.5AUINSQ-SQ PN BOX CAP

3.5" x 3.5" SQUARE CORNER ASSEMBLED BALL BEARING END CAP BOXED

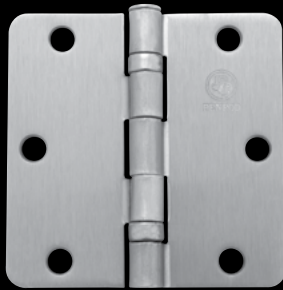
PACKED 2 PIECES PER INNER AND 100 PIECES PER MASTER
EACH INNER PACKED WITH 12 #9 x 3/4" SCREWS



ITEM#	DESCRIPTION	CODES	REFERENCE
M25348	ANTIQUE BRASS	US5	MH3.5BBINSQ-SQ AB BOX CAP
M25347	ANTIQUE NICKEL	US15A	MH3.5BBINSQ-SQ AN BOX CAP
M25345	BRIGHT BRASS	US3	MH3.5BBINSQ-SQ BB BOX CAP
M25350	BRIGHT CHROME	US26	MH3.5BBINSQ-SQ CM BOX CAP
M25349	COLONIAL BRONZE - DARK	US10BD	MH3.5BBINSQ-SQ CB BOX CAP
M25844	DULL BRASS	US4	MH3.5BBINSQ-SQ DB BOX CAP
M25351	DULL CHROME	US26D	MH3.5BBINSQ-SQ DC BOX CAP
M25352	SATIN NICKEL	US15	MH3.5BBINSQ-SQ SN BOX CAP
M26303	FLAT BLACK	US19	MH3.5BBINSQ-SQ FB BOX CAP
M27082	POLISHED NICKEL	US14	MH3.5BBINSQ-SQ PN BOX CAP

3.5" x 3.5"
1/4" RADIUS x 1/4" RADIUS
ASSEMBLED BALL BEARING

BULK PACKED 100 PIECES PER MASTER



ITEM#	DESCRIPTION	CODES	REFERENCE
M19943	ANTIQUE NICKEL	US15A	MH3.5BBIN1/4-1/4AN
M25976	BRIGHT CHROME	US26	MH3.5BBIN1/4-1/4CM
M20642	COLONIAL BRONZE - DARK	US10BD	MH3.5BBIN1/4-1/4CB
M19945	DULL BRASS	US4	MH3.5BBIN1/4-1/4DB
M25977	DULL CHROME	US26D	MH3.5BBIN1/4-1/4DC
M19944	SATIN NICKEL	US15	MH3.5BBIN1/4-1/4SN
M26890	FLAT BLACK	US19	MH3.5BBIN1/4-1/4FB
M27071	OLD WORLD BRONZE	OWB	MH3.5BBIN1/4-1/4SN

3.5" x 3.5"
5/8" RADIUS x 5/8" RADIUS
ASSEMBLED BALL BEARING BOXED

PACKED 3 PIECES PER PER INNER AND 96 PIECES PER MASTER
 EACH INNER PACKED WITH 18 #9 x 3/4" SCREWS



ITEM#	DESCRIPTION	CODES	REFERENCE
M14894	BRIGHT BRASS	US3	MH3.5BBIN5/8-5/8BBBOX
M14942	DULL BRASS	US4	MH3.5BBIN5/8-5/8DBBOX
M16272	DULL CHROME	US26D	MH3.5BBIN5/8-5/8DCBOX
M16450	SATIN NICKEL	US15	MH3.5BBIN5/8-5/8SNBOX

3.5" x 3.5"
5/8" RADIUS x 5/8" RADIUS
UNASSEMBLED

BULK PACKED 100 PIECES PER MASTER



ITEM#	DESCRIPTION	CODES	REFERENCE
M20509	BRIGHT CHROME	US26	MH3.5UNIN5/8-5/8CM
M20508	COLONIAL BRONZE - DARK	US10BD	MH3.5UNIN5/8-5/8CB
M10243	DULL BRASS	US4	MH3.5UNIN5/8-5/8DB
M10258	DULL CHROME	US26D	MH3.5UNIN5/8-5/8DC
M24660	DULL NICKEL	LUS15	MH3.5UNIN5/8-5/8DN
M25300	FLAT BLACK	US19	MH3.5UNIN5/8-5/8FB
M20507	SATIN NICKEL	US15	MH3.5UNIN5/8-5/8SN

HINGE PINS FOR 3.5" HINGES

PACKED 100 PIECES PER INNER AND 400 PIECES PER MASTER



ITEM#	DESCRIPTION	CODES	REFERENCE
M19036	ANTIQUÉ NICKEL	US15A	MM3.5PINS5/8-5/8AN6MM
M19134	BRIGHT CHROME	US26	MM3.5PINS5/8-5/8CM6MM
M20506	COLONIAL BRONZE - DARK	US10BD	MM3.5PINS5/8-5/8CB6MM
M16448	DULL CHROME	US26D	MM3.5PINS5/8-5/8DC6MM
M16447	LIGHT BRASS	US3-4	MM3.5PINS5/8-5/8LB6MM
M20272	SATIN NICKEL	US15	MM3.5PINS5/8-5/8SN6MM
M17649	WHITE PRIMED	USP	MM3.5PINS5/8-5/8WP6MM
M27595	FLAT BLACK	US19	MM3.5PINS5/8-5/8FB6MM

4.0" x 4.0" 5/8" RADIUS x 5/8" RADIUS ASSEMBLED

BULK PACKED 100 PIECES PER MASTER
TAYLOR PREP



ITEM#	DESCRIPTION	CODES	REFERENCE
M10553	ANTIQUÉ BRASS	US5	MH4.0AUPC5/8-5/8AB#9
M19255	ANTIQUÉ NICKEL	US15A	MH4.0AUPC5/8-5/8AN#9
M10559	BRIGHT BRASS	US3	MH4.0AUPC5/8-5/8BB#9
M10575	BRIGHT CHROME	US26	MH4.0AUPC5/8-5/8CM#9
M18188	COLONIAL BRONZE - DARK	US10BD	MH4.0AUPC5/8-5/8CB#9
M10580	DULL BRASS	US4	MH4.0AUPC5/8-5/8DB#9
M10612	DULL CHROME	US26D	MH4.0AUPC5/8-5/8DC#9
M21183	DULL NICKEL	LUS15	MH4.0AUPC5/8-5/8DN#9
M10616	LIGHT BRASS	US3-4	MH4.0AUPC5/8-5/8LB#9
M16237	OIL RUBBED BRONZE - LIGHT	US10B	MH4.0AUPC5/8-5/8OB#9
M17224	SATIN NICKEL	US15	MH4.0AUPC5/8-5/8SN#9
M10653	ZINC DICHROMATE	US2D	MH4.0AUPC5/8-5/8ZC#9

3.5" x 3.5"
1/4" RADIUS x 1/4" RADIUS
UNASSEMBLED

BULK PACKED 100 PIECES PER MASTER



ITEM#	DESCRIPTION	CODES	REFERENCE
M24364	ANTIQUE NICKEL	US15A	MH3.5UNINI/4-1/4AN
M10231	BRIGHT BRASS	US3	MH3.5UNINI/4-1/4BB
M24365	COLONIAL BRONZE - DARK	US10BD	MH3.5UNINI/4-1/4 CB
M10233	DULL BRASS	US4	MH3.5UNINI/4-1/4DB
M10235	DULL CHROME	US26D	MH3.5UNINI/4-1/4DC
M19491	SATIN NICKEL	US15	MH3.5UNINI/4-1/4SN
M10237	ZINC DICHROMATE	US2D	MH3.5UNINI/4-1/4ZC

3.5" x 3.5"
SQUARE CORNER
ASSEMBLED END CAP

BULK PACKED 100 PIECES PER MASTER



ITEM#	DESCRIPTION	CODES	REFERENCE
M25842	COLONIAL BRONZE - DARK	US10BD	MH3.5AUINSQ-SQ CB CAP
M25843	DULL BRASS	US4	MH3.5AUINSQ-SQ DB CAP
M25346	SATIN NICKEL	US15	MH3.5AUINSQ-SQ SN CAP
M26305	LIGHT BRASS	US3-4	MH3.5AUINSQ-SQ LB CAP

SAFETY STUD

BULK PACKED 100 PIECES PER MASTER
TAYLOR PREP



ITEM#	DESCRIPTION	CODES	
M24890	WHITE PRIMED	USP	MH4.0AUPC5/8-5/8WPSTD

RIVETED FOR OUTSWING

BULK PACKED 100 PIECES PER MASTER
TAYLOR PREP



ITEM#	DESCRIPTION	CODES	
M17867	ANTIQUE BRASS	US5	MH4.0AUPC5/8-5/8ABRV9
M16002	ANTIQUE NICKEL	US15A	MH4.0AUPC5/8-5/8ANRV9
M14462	BRIGHT BRASS	US3	MH4.0AUPC5/8-5/8BBRV9
M16003	BRIGHT CHROME	US26	MH4.0AUPC5/8-5/8CMRV9
M20789	COLONIAL BRONZE - DARK	US10BD	MH4.0AUPC5/8-5/8CBRV9
M16291	DULL BRASS	US4	MH4.0AUPC5/8-5/8DBRV9
M17865	DULL CHROME	US26D	MH4.0AUPC5/8-5/8DCRV9
M20892	DULL NICKEL	LUS15	MH4.0AUPC5/8-5/8DN2R9
M17324	LIGHT BRASS	US3-4	MH4.0AUPC5/8-5/8LBRV9
M20916	OIL RUBBED BRONZE - LIGHT	US10B	MH4.0AUPC5/8-5/8OBRV9
M17868	SATIN NICKEL	US15	MH4.0AUPC5/8-5/8SNRV9
M24902	WHITE PRIMED	USP	MH4.0AUPC5/8-5/8WPRV9
M16087	ZINC DICHROMATE	US2D	MH4.0AUPC5/8-5/8ZCRV9

4.0" x 4.0" 5/8" RADIUS x 5/8" RADIUS ASSEMBLED BOXED

PACKED 2 PIECES PER INNER AND 100 PIECES PER MASTER
EACH INNER PACKED WITH 16 #9 x 3/4" SCREWS
TAYLOR PREP



ITEM#	DESCRIPTION	CODES	REFERENCE
M10557	ANTIQUE NICKEL	US15A	MH4.0AUPC5/8-5/8ANB09
M10571	BLACK PRIMED	US1D	MH4.0AUPC5/8-5/8BPB09
M16452	SATIN NICKEL	US15	MH4.0AUPC5/8-5/8SNB09
M10648	STAINLESS STEEL	US32D	MH4.0AUPC5/8-5/8SSBOX

RIVETED FOR OUTSWING BOXED

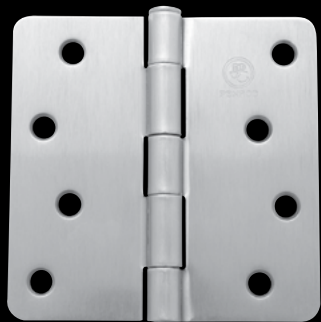
PACKED 2 PIECES PER INNER AND 100 PIECES PER MASTER
EACH INNER PACKED WITH 16 #9 X 3/4" SCREWS
TAYLOR PREP



ITEM#	DESCRIPTION	CODES	REFERENCE
M10650	STAINLESS STEEL	US32D	MH4.0AUPC5/8-5/8SSRIV

4.0" x 4.0" 1/4" RADIUS x 1/4" RADIUS ASSEMBLED

BULK PACKED 100 PIECES PER MASTER
TAYLOR PREP



ITEM#	DESCRIPTION	CODES	REFERENCE
M10514	ANITQUE BRASS	US5	MH4.0AUPC1/4-1/4AB#9
M20461	ANTIQUÉ NICKEL	US15A	MH4.0AUPC1/4-1/4AN#9
M10517	BRIGHT BRASS	US3	MH4.0AUPC1/4-1/4BB#9
M10525	BRIGHT CHROME	US26	MH4.0AUPC1/4-1/4CM#9
M18189	COLONIAL BRONZE - DARK	US10BD	MH4.0AUPC1/4-1/4CB#9
M10527	DULL BRASS	US4	MH4.0AUPC1/4-1/4DB#9
M10536	DULL CHROME	US26D	MH4.0AUPC1/4-1/4DC#9
M10538	LIGHT BRASS	US3-4	MH4.0AUPC1/4-1/4LB#9
M17225	SATIN NICKEL	US15	MH4.0AUPC1/4-1/4SN#9
M24901	WHITE PRIMED	USP	MH4.0AUPC1/4-1/4WP
M10546	ZINC DICHROMATE	US2D	MH4.0AUPC1/4-1/4ZC#9

RIVETED FOR OUTSWING

BULK PACKED 100 PIECES PER MASTER
TAYLOR PREP



ITEM#	DESCRIPTION	CODES	REFERENCE
M24670	COLONIAL BRONZE - DARK	US10BD	MH4.0AUPC1/4-1/4CBRV9
M16004	DULL BRASS	US4	MH4.0AUPC1/4-1/4DBRV9
M26013	DULL CHROME	US26D	MH4.0AUPC1/4-1/4DCRV9
M24671	SATIN NICKEL	US15	MH4.0AUPC1/4-1/4SNRV9
M26665	WHITE PRIMED	USP	MH4.0AUPC1/4-1/4WP RV9
M16006	BRIGHT CHROME	US26	MH4.0AUPC1/4-1/4CMRV9

**4.0" x 4.0"
5/8" RADIUS x 5/8" RADIUS
UNASSEMBLED**

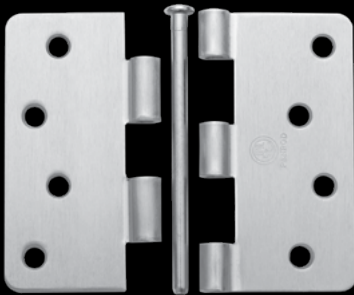
BULK PACKED 100 PIECES PER MASTER
TAYLOR PREP



ITEM#	DESCRIPTION	CODES	REFERENCE
M24658	COLONIAL BRONZE - DARK	US10BD	MH4.0UNPC5/8-5/8CB#9
M11000	DULL BRASS	US4	MH4.0UNPC5/8-5/8DB#9

**4.0" x 4.0"
1/4" RADIUS x 1/4" RADIUS
UNASSEMBLED**

BULK PACKED 100 PIECES PER MASTER
TAYLOR PREP



ITEM#	DESCRIPTION	CODES	REFERENCE
M24981	COLONIAL BRONZE - DARK	US10BD	MH4.0UNPC1/4-1/4CB#9
M10995	DULL BRASS	US4	MH4.0UNPC1/4-1/4DB#9
M24982	SATIN NICKEL	US15	MH4.0UNPC1/4-1/4SN#9
M10997	ZINC DICHROMATE	US2D	MH4.0UNPC1/4-1/4ZC#9

4.0" x 4.0" 5/8" RADIUS x 5/8" RADIUS ASSEMBLED BALL BEARING

BULK PACKED 100 PIECES PER MASTER
TAYLOR PREP



ITEM#	DESCRIPTION	CODES	REFERENCE
M19971	ANTIQU BRASS	US5	MH4.0BBPC5/8-5/8ABBK9
M19972	ANTIQU NICKEL	US15A	MH4.0BBPC5/8-5/8ANBK9
M15478	BRIGHT BRASS	US3	MH4.0BBPC5/8-5/8BBBK9
M20719	BRIGHT CHROME	US26	MH4.0BBPC5/8-5/8CMBK9
M19970	COLONIAL BRONZE - DARK	US10BD	MH4.0BBPC5/8-5/8CBBK9
M16528	DULL BRASS	US4	MH4.0BBPC5/8-5/8DBBK9
M16529	DULL CHROME	US26D	MH4.0BBPC5/8-5/8DCBK9
M20409	LIGHT BRASS	US3-4	MH4.0BBPC5/8-5/8LBBK9
M16527	OIL RUBBED BRONZE - LIGHT	US10B	MH4.0BBPC5/8-5/8OBBK9
M19967	SATIN NICKEL	US15	MH4.0BBPC5/8-5/8SNBK9
M15899	ZINC DICHROMATE	US2D	MH4.0BBPC5/8-5/8ZCBK9
M26449	FLAT BLACK	US19	MH4.0BBPC5/8-5/8FBBK9

RIVETED FOR OUTSWING

BULK PACKED 100 PIECES PER MASTER
TAYLOR PREP



ITEM#	DESCRIPTION	CODES	REFERENCE
M16466	ANTIQU BRASS	US5	MH4.0BBPC5/8-5/8ABNR9
M21127	ANTIQU NICKEL	US15A	MH4.0BBPC5/8-5/8AN9NR
M18394	BRIGHT BRASS	US3	MH4.0BBPC5/8-5/8BBBR9
M24738	COLONIAL BRONZE - DARK	US10BD	MH4.0BBPC5/8-5/8CBBR9
M20919	SATIN NICKEL	US15	MH4.0BBPC5/8-5/8SNBR9
M15900	ZINC DICHROMATE	US2D	MH4.0BBPC5/8-5/8ZCBR9
M26354	DULL BRASS	US4	MH4.0BBPC5/8-5/8DBRV9
M26450	FLAT BLACK	US19	MH4.0BBPC5/8-5/8FBRV9

**4.0" x 4.0"
5/8" RADIUS x 5/8" RADIUS
ASSEMBLED BALL BEARING BOXED**

PACKED 3 PIECES PER INNER AND 96 PIECES PER MASTER
EACH INNER PACKED WITH 24 #9 x 3/4" SCREWS
TAYLOR PREP



ITEM#	DESCRIPTION	CODES	REFERENCE
M15840	ANTIQUÉ BRASS	US5	MH4.0BBPC5/8-5/8AB#9
M15612	ANTIQUÉ NICKEL	US15A	MH4.0BBPC5/8-5/8AN#9
M17663	BLACK PRIMED	US1D	MH4.0BBPC5/8-5/8BP#9
M10791	BRIGHT BRASS	US3	MH4.0BBPC5/8-5/8BB#9
M15613	BRIGHT CHROME	US26	MH4.0BBPC5/8-5/8CM#9
M18648	COLONIAL BRONZE - DARK	US10BD	MH4.0BBPC5/8-5/8CB#9
M17058	SATIN NICKEL	US15	MH4.0BBPC5/8-5/8SN#9
M10798	STAINLESS STEEL	US32D	MH4.0BBPC5/8-5/8SSBOX
M14825	STAINLESS STEEL	US32D	MH4.0BBPC5/8-5/8SSB09

RIVETED FOR OUTSWING BOXED

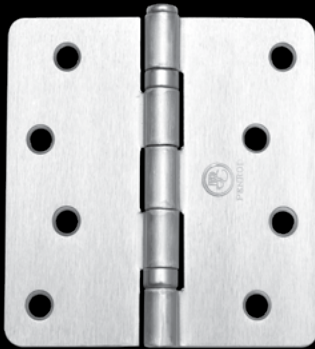
PACKED 3 PIECES PER INNER AND 96 PIECES PER MASTER
EACH INNER PACKED WITH 24 #9 x 3/4" SCREWS
TAYLOR PREP



ITEM#	DESCRIPTION	CODES	REFERENCE
M18207	BLACK PRIMED	US1D	MH4.0BBPC5/8-5/8BPNR9
M18581	DULL BRASS	US4	MH4.0BBPC5/8-5/8DBNR9
M15897	DULL CHROME	US26D	MH4.0BBPC5/8-5/8DCRV9
M22307	LIGHT BRASS	US3-4	MH4.0BBPC5/8-5/8LBNR9
M14707	STAINLESS STEEL	US32D	MH4.0BBPC5/8-5/8SSRIV

4.0" x 4.0"
1/4" RADIUS x 1/4" RADIUS
ASSEMBLED BALL BEARING

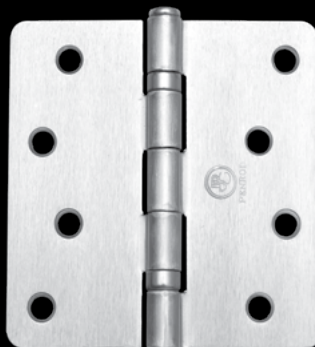
BULK PACKED 100 PIECES PER MASTER
 TAYLOR PREP



ITEM#	DESCRIPTION	CODES	REFERENCE
M19084	BRIGHT CHROME	US26	MH4.0BBPC1/4-1/4CMBK9
M20252	COLONIAL BRONZE - DARK	US10BD	MH4.0BBPC1/4-1/4CBBK9
M20253	SATIN NICKEL	US15	MH4.0BBPC1/4-1/4SNBK9

4.0" x 4.0"
1/4" RADIUS x 1/4" RADIUS
ASSEMBLED BALL BEARING BOXED

PACKED 3 PIECES PER INNER AND 96 PIECES PER MASTER
 EACH INNER PACKED WITH 24 #9 x 3/4" SCREWS
 TAYLOR PREP



ITEM#	DESCRIPTION	CODES	REFERENCE
M15609	ANTIQUÉ NICKEL	US15A	MH4.0BBPC1/4-1/4AN#9
M10787	BRIGHT BRASS	US3	MH4.0BBPC1/4-1/4BB#9
M18649	COLONIAL BRONZE - DARK	US10BD	MH4.0BBPC1/4-1/4CB#9
M10789	DULL BRASS	US4	MH4.0BBPC1/4-1/4DB#9
M15611	DULL CHROME	US26D	MH4.0BBPC1/4-1/4DC#9

4.0" x 4.0" 5/8" RADIUS x SQUARE CORNER ASSEMBLED

BULK PACKED 100 PIECES PER MASTER
TAYLOR PREP



LEFT HANDED

ITEM#	DESCRIPTION	CODES	REFERENCE
M24351	COLONIAL BRONZE - DARK	US10BD	MH4.0ALPC5/8-SQ CB
M25204	SATIN NICKEL	US15	MH4.0ALPC5/8-SQ SN



RIGHT HANDED

ITEM#	DESCRIPTION	CODES	REFERENCE
M24350	COLONIAL BRONZE - DARK	US10BD	MH4.0ARPC5/8-SQ CB
M25203	SATIN NICKEL	US15	MH4.0ARPC5/8-SQ SN

**4.0" x 4.0"
5/8" RADIUS x SQUARE CORNER
ASSEMBLED BOXED**

PACKED 2 PIECES PER INNER AND 100 PIECES PER MASTER
EACH INNER PACKED WITH 16 #9 x 3/4" SCREWS
TAYLOR PREP



LEFT HANDED

ITEM#	DESCRIPTION	CODES	REFERENCE
M16502	STAINLESS STEEL	US32D	MH4.0ALPC5/8-SQ SSBOX

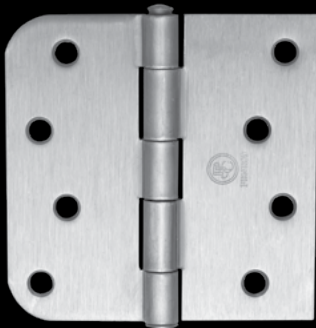


RIGHT HANDED

ITEM#	DESCRIPTION	CODES	REFERENCE
M16501	STAINLESS STEEL	US32D	MH4.0ARPC5/8-SQ SSBOX

RIVETED FOR OUTSWING BOXED

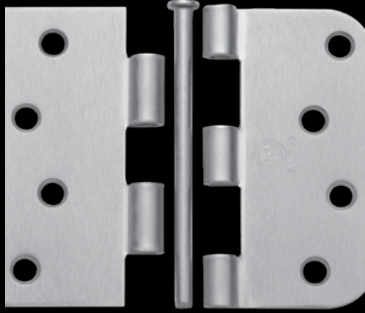
PACKED 2 PIECES PER INNER AND 100 PIECES PER MASTER
EACH INNER PACKED WITH 16 #9 x 3/4" SCREWS
TAYLOR PREP



ITEM#	DESCRIPTION	CODES	REFERENCE
M16503	STAINLESS STEEL	US32D	MH4.0ARPC5/8-SQ SSRVB

4.0" x 4.0" 5/8" RADIUS x SQUARE CORNER Unassembled

BULK PACKED 100 PIECES PER MASTER
TAYLOR PREP



ITEM#	DESCRIPTION	CODES	REFERENCE
M24659	COLONIAL BRONZE - DARK	US10BD	MH4.0UNPC5/8-SQ CB
M20895	DULL NICKEL	LUS15	MH4.0UNPC5/8-SQ DN229

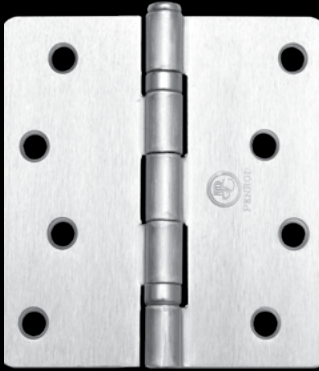
SAFETY STUD



ITEM#	DESCRIPTION	CODES	REFERENCE
M11029	ZINC DICHROMATE	US2D	MH4.0UNPC5/8-SQ ZCSTD

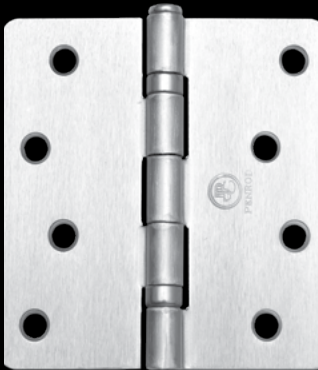
4.0" x 4.0" 1/4" RADIUS x 1/4" RADIUS ASSEMBLED BALL BEARING

BULK PACKED 100 PIECES PER MASTER
MASONITE PREP



ITEM#	DESCRIPTION	CODES	REFERENCE
M27073	OLD WORLD BRONZE	OWB	MH4.OBBCG1/4-1/40WB#9
M27234	FLAT BLACK	US19	MH4.OBBCG1/4-1/4FB#9

RIVETED FOR OUTSWING



ITEM#	DESCRIPTION	CODES	REFERENCE
M27076	OLD WORLD BRONZE	OWB	MH4.OBBCG1/4-1/40WBRV9
M27235	FLAT BLACK	US19	MH4.OBBCG1/4-1/4FBRV9

4.0" x 4.0" 5/8" RADIUS x SQUARE CORNER CORNER ASSEMBLED

BULK PACKED 100 PIECES PER MASTER
TAYLOR PREP #2 SWAGE (1/8")



LEFT HANDED

ITEM#	DESCRIPTION	CODES	REFERENCE
M25036	SATIN NICKEL	US15	MH4.0ALPC5/8-SQ SNI/8S



RIGHT HANDED

ITEM#	DESCRIPTION	CODES	REFERENCE
M25029	SATIN NICKEL	US15	MH4.0ARPC5/8-SQ SNI/8S

RIVETED FOR OUTSWING

BULK PACKED 100 PIECES PER MASTER
TAYLOR PREP #2 SWAGE (1/8")



ITEM#	DESCRIPTION	CODES	REFERENCE
M24939	WHITE PRIMED	USP	MH4.0ARPC5/8-SQWPRV1/8S

NON-REMOVABLE PIN FOR OUTSWING

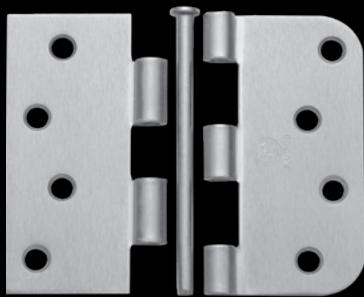
BULK PACKED 100 PIECES PER MASTER
TAYLOR PREP #2 SWAGE (1/8")



ITEM#	DESCRIPTION	CODES	REFERENCE
M25054	SATIN NICKEL	US15	MH4.0ARPC5/8-SQSNNRP1/8S

4.0" x 4.0" 5/8" RADIUS x SQUARE CORNER UNASSEMBLED

BULK PACKED 100 PIECES PER MASTER
TAYLOR PREP #2 SWAGE (1/8")



ITEM#	DESCRIPTION	CODES	REFERENCE
M24938	COLONIAL BRONZE - DARK	US10BD	MH4.0UNPC5/8-SQCBI/8S
M25858	DULL NICKEL	LUS15	MH4.0UNPC5/8-SQDNI/8
M24937	SATIN NICKEL	US15	MH4.0UNPC5/8-SQSN1/8
M24936	WHITE PRIMED	USP	MH4.0UNPC5/8-SQWPI/8S
M24935	ZINC DICHROMATE	US2D	MH4.0UNPC5/8-SQZC1/8S
M27000	DULL CHROME	US26D	MH4.0UNPC5/8-SQ DC 1/8
M27243	OLD WORLD BRONZE	OWB	MH4.0UNPC5/8-SQOWBI/8S

4.0" x 4.0" 5/8" RADIUS x 5/8" RADIUS ASSEMBLED



BULK PACKED 100 PIECES PER MASTER
MASONITE PREP

ITEM#	DESCRIPTION	CODES	REFERENCE
M24605	ANTIQUÉ BRASS	US5	MH4.0AUCG5/8-5/8AB#9
M24609	ANTIQUÉ NICKEL	US15A	MH4.0AUCG5/8-5/8AN#9
M24607	BRIGHT BRASS	US3	MH4.0AUCG5/8-5/8BB#9
M25910	BRIGHT CHROME	US26	MH4.0AUCG5/8-5/8CM#9
M24604	COLONIAL BRONZE - DARK	US10BD	MH4.0AUCG5/8-5/8CB#9
M25911	DULL BRASS	US4	MH4.0AUCG5/8-5/8DB#9
M24606	DULL CHROME	US26D	MH4.0AUCG5/8-5/8DC#9
M25913	DULL NICKEL	LUS15	MH4.0AUCG5/8-5/8DN#9
M24611	FLAT BLACK	US19	MH4.0AUCG5/8-5/8FB#9
M25912	LIGHT BRASS	US3-4	MH4.0AUCG5/8-5/8LB#9
M24610	SATIN NICKEL	US15	MH4.0AUCG5/8-5/8SN#9
M25914	WHITE PRIMED	USP	MH4.0AUCG5/8-5/8WP#9
M24608	ZINC DICHROMATE	US2D	MH4.0AUCG5/8-5/8ZC#9
M26282	BRUSHED ZINC	US2BZ	MH4.0AUCG5/8-5/8BZ #9
M26470	OLD WORLD BRONZE	OWB	MH4.0AUCG5/8-5/8OWB#9
M27085	POLISHED NICKEL	US14	MH4.0AUCG5/8-5/8PN#9

SAFETY STUD

BULK PACKED 100 PIECES PER MASTER
MASONITE PREP



ITEM#	DESCRIPTION	CODES	REFERENCE
M25304	ANTIQUÉ BRASS	US5	MH4.0AUCG5/8-5/8AB#9STD
M26006	BRUSH ZINC	US2BZ	MH4.0AUCG5/8-5/8BZ#9STD
M25305	COLONIAL BRONZE - DARK	US10BD	MH4.0AUCG5/8-5/8CB#9STD
M25303	DULL CHROME	US26D	MH4.0AUCG5/8-5/8DC#9STD
M25289	SATIN NICKEL	US15	MH4.0AUCG5/8-5/8SN#9STD
M25980	ZINC DICHROMATE	US2D	MH4.0AUCG5/8-5/8ZCS/9
M26815	DULL NICKEL	LUS15	MH4.0AUCG5/8-5/8DN#9STD
M26361	BRIGHT CHROME	US26	MH4.0AUCG5/8-5/8CM#9 STD
M27121	FLAT BLACK	US19	MH4.0AUCG5/8-5/8FB#9STD
M26365	STAINLESS STEEL	US32D	MH4.0AUCG5/8-5/8SS#9 STD

RIVETED FOR OUTSWING

BULK PACKED 100 PIECES PER MASTER
MASONITE PREP



ITEM#	DESCRIPTION	CODES	REFERENCE
M24629	ANTIQU BRASS	US5	MH4.0AUCG5/8-5/8ABRV9
M24633	ANTIQU NICKEL	US15A	MH4.0AUCG5/8-5/8ANRV9
M24631	BRIGHT BRASS	US3	MH4.0AUCG5/8-5/8BBRV9
M25892	BRIGHT CHROME	US26	MH4.0AUCG5/8-5/8CMRV9
M24628	COLONIAL BRONZE - DARK	US10BD	MH4.0AUCG5/8-5/8CBRV9
M24630	DULL CHROME	US26D	MH4.0AUCG5/8-5/8DCRV9
M24635	FLAT BLACK	US19	MH4.0AUCG5/8-5/8FBRV9
M24849	LIGHT BRASS	US3-4	MH4.0AUCG5/8-5/8LBRIV
M24634	SATIN NICKEL	US15	MH4.0AUCG5/8-5/8SNRV9
M25932	WHITE PRIMED	USP	MH4.0AUCG5/8-5/8WPRV9
M24632	ZINC DICHROMATE	US2D	MH4.0AUCG5/8-5/8ZCRV9
M26473	OLD WORLD BRONZE	OWB	MH4.0AUCG5/8-5/8OWBRV9
M26283	BRUSHED ZINC	US2BZ	MH4.0AUCG5/8-5/8BZ RV9
M26243	DULL NICKEL	LUS15	MH4.0AUCG5/8-5/8DNRV9
M27086	POLISHED NICKEL	US14	MH4.0AUCG5/8-5/8PNRV9

4.0" x 4.0" 5/8" RADIUS x 5/8" RADIUS UNASSEMBLED

BULK PACKED 100 PIECES PER MASTER
MASONITE 2.5 PREP



ITEM#	DESCRIPTION	CODES	REFERENCE
M26180	COLONIAL BRONZE	US10BD	MH40UNCG5858CB#9

4.0" x 4.0"
5/8" RADIUS x 5/8" RADIUS
ASSEMBLED BOXED

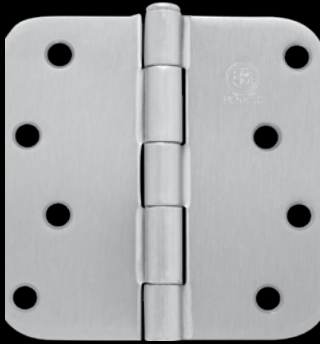
PACKED 2 PIECES PER INNER AND 100 PIECES PER MASTER
 EACH INNER PACKED WITH 16 #9 x 3/4" SCREWS
 MASONITE PREP



ITEM#	DESCRIPTION	CODES	REFERENCE
M24832	ANTIQUE BRASS	US5	MH4.0AUCG5/8-5/8ABB09
M24826	BRIGHT BRASS	US3	MH4.0AUCG5/8-5/8BBB09
M24830	COLONIAL BRONZE - DARK	US10BD	MH4.0AUCG5/8-5/8CBB09
M24829	DULL CHROME	US26D	MH4.0AUCG5/8-5/8DCB09
M24828	FLAT BLACK	US19	MH4.0AUCG5/8-5/8FBB09
M24831	SATIN NICKEL	US15	MH4.0AUCG5/8-5/8SNB09

4.0" x 4.0"
5/8" RADIUS x 5/8" RADIUS
ASSEMBLED BOXED

PACKED 3 PIECES PER INNER AND 48 PIECES PER MASTER
 BULK PACKED WITH 400 #10 X 5/8 AND 400 #10 X 1FLYCUT SCREWS
 MASONITE PREP



ITEM#	DESCRIPTION	CODES	REFERENCE
M27193	SATIN NICKEL	US15	MH4.0AUCG5/8-5/8SN MAS SSE
M27191	COLONIAL BRONZE	US10BD	MH4.0AUCG5/8-5/8CB MAS SSE
M27189	BRIGHT CHROME	US26	MH4.0AUCG5/8-5/8CM MAS SSE

4.0" x 4.0"
5/8" RADIUS x 5/8" RADIUS STAINLESS STEEL BASED
ASSEMBLED NON REMOVEABLE PIN

PACKED 3 PIECES PER INNER AND 48 PIECES PER MASTER
 BULK PACKED WITH 400 #10 X 5/8 AND 400 #10 X 1FLYCUT SCREWS
 MASONITE PREP



ITEM#	DESCRIPTION	CODES	REFERENCE
M27194	SATIN NICKEL	US15	MH4.0AUCG5/8-5/8SNRIV MAS SSE
M27192	COLONIAL BRONZE	US10BD	MH4.0AUCG5/8-5/8CBRIV MAS SSE
M27190	BRIGHT CHROME	US26	MH4.0AUCG5/8-5/8CMRIV MAS SSE

4.0" x 4.0"
1/4" RADIUS X 1/4" RADIUS
ASSEMBLED BOXED



PACKED 2 PIECES PER INNER AND 100 PIECES PER MASTER
 EACH INNER PACKED WITH 16 #9 x 3/4" SCREWS
 MASONITE PREP

ITEM#	DESCRIPTION	CODES	REFERENCE
M24811	ANTIQUÉ BRASS	US5	MH4.0AUCG1/4-1/4ABB09
M24813	BRIGHT BRASS	US3	MH4.0AUCG1/4-1/4BBB09
M24816	COLONIAL BRONZE - DARK	US10BD	MH4.0AUCG1/4-1/4CBB09
M24815	DULL CHROME	US26D	MH4.0AUCG1/4-1/4DCB09
M24814	FLAT BLACK	US19	MH4.0AUCG1/4-1/4FBB09
M24817	SATIN NICKEL	US15	MH4.0AUCG1/4-1/4SNB09

4.0" x 4.0"
1/4" RADIUS X 1/4" RADIUS
ASSEMBLED



BULK PACKED 100 PIECES PER MASTER
 EACH INNER PACKED WITH 16 #9 x 3/4" SCREWS
 MASONITE PREP

ITEM#	DESCRIPTION	CODES	REFERENCE
M27128	FLAT BLACK	US19	MH4.0AUCG1/4-1/4FB#9
M27074	OLD WORLD BRONZE	OWB	MH4.0AUCG1/4-1/4OWB#9

RIVETED FOR OUTSWING

ITEM#	DESCRIPTION	CODES	REFERENCE
M27239	FLAT BLACK	US19	MH4.0AUCG1/4-1/4FBRV9
M27075	OLD WORLD BRONZE	OWB	MH4.0AUCG1/4-1/4OWBRV9

4.0" x 4.0" 5/8" RADIUS X 5/8" RADIUS ASSEMBLED BALL BEARING

BULK PACKED 100 PIECES PER MASTER
MASONITE PREP



ITEM#	DESCRIPTION	CODES	REFERENCE
M24613	ANTIQU BRASS	US5	MH4.0BBCG5/8-5/8ABBK9
M24618	ANTIQU NICKEL	US15A	MH4.0BBCG5/8-5/8ANBK9
M24615	BRIGHT BRASS	US3	MH4.0BBCG5/8-5/8BBBK9
M24617	BRIGHT CHROME	US26	MH4.0BBCG5/8-5/8CMBK9
M24612	COLONIAL BRONZE - DARK	US10BD	MH4.0BBCG5/8-5/8CBBK9
M24616	DULL CHROME	US26D	MH4.0BBCG5/8-5/8DCBK9
M24620	FLAT BLACK	US19	MH4.0BBCG5/8-5/8FBBK9
M24619	SATIN NICKEL	US15	MH4.0BBCG5/8-5/8SNBK9
M24614	ZINC DICHROMATE	US2D	MH4.0BBCG5/8-5/8ZCBK9
M27087	POLISHED NICKEL	US14	MH4.0BBCG5/8-5/8PNBK9
M27474	OLD WORLD BRONZE	OWB	MH4.0BBCG5/8-5/8OWB#9
M27599	FINE SATIN BRASS	US7	MH4.0BBCG5/8-5/8STBBK9

RIVETED FOR OUTSWING

BULK PACKED 100 PIECES PER MASTER
MASONITE PREP



ITEM#	DESCRIPTION	CODES	REFERENCE
M24637	ANTIQU BRASS	US5	MH4.0BBCG5/8-5/8ABRV9
M24642	ANTIQU NICKEL	US15A	MH4.0BBCG5/8-5/8ANRV9
M24639	BRIGHT BRASS	US3	MH4.0BBCG5/8-5/8BBRV9
M24636	COLONIAL BRONZE - DARK	US10BD	MH4.0BBCG5/8-5/8CBRV9
M24640	DULL CHROME	US26D	MH4.0BBCG5/8-5/8DCRV9
M24644	FLAT BLACK	US19	MH4.0BBCG5/8-5/8FBRV9
M24643	SATIN NICKEL	US15	MH4.0BBCG5/8-5/8SNRV9
M24638	ZINC DICHROMATE	US2D	MH4.0BBCG5/8-5/8ZCRV9
M27088	POLISHED NICKEL	US14	MH4.0BBCG5/8-5/8PNRV9
M27600	FINE SATIN BRASS	US7	MH4.0BBCG5/8-5/8STBRV9

**4.0" x 4.0"
5/8" RADIUS x 5/8" RADIUS STAINLESS STEEL BASED
BALL BEARING ASSEMBLED**

PACKED 3 PIECES PER INNER AND 48 PIECES PER MASTER
BULK PACKED WITH 400 #10 X 5/8 AND 400 #10 X 1FLY CUT SCREWS
MASONITE PREP



ITEM#	DESCRIPTION	CODES	REFERENCE
M27187	SATIN NICKEL	US15	MH4.0BBCG5/8-5/8SN MAS SSE
M27185	COLONIAL BRONZE	US10BD	MH4.0BBCG5/8-5/8CB MAS SSE
M27183	BRIGHT CHROME	US26	MH4.0BBCG5/8-5/8CM MAS SSE

**4.0" x 4.0"
5/8" RADIUS x 5/8" RADIUS STAINLESS STEEL BASED
BALL BEARING ASSEMBLED NON REMOVEABLE PIN**

PACKED 3 PIECES PER INNER AND 48 PIECES PER MASTER
BULK PACKED WITH 400 #10 X 5/8 AND 400 #10 X 1FLY CUT SCREWS
MASONITE PREP



ITEM#	DESCRIPTION	CODES	REFERENCE
M27188	SATIN NICKEL	US15	MH4.0BBCG5/8-5/8SNRIV MAS SSE
M27186	COLONIAL BRONZE	US10BD	MH4.0BBCG5/8-5/8CBRIV MAS SSE
M27184	BRIGHT CHROME	US26	MH4.0BBCG5/8-5/8CMRIV MAS SSE

**4.0" x 4.0"
Square Corner
ASSEMBLED End Cap**

BULK PACKED 100 PIECES PER MASTER
MASONITE PREP



ITEM#	DESCRIPTION	CODES	REFERENCE
M25845	DULL BRASS	US4	MH4.0AUCGSQ-SQDB #9CAP
M25360	SATIN NICKEL	US15	MH4.0AUCGSQ-SQSN #9CAP
M26306	LIGHT BRASS	US3-4	MH4.0AUCGSQ-SQLB #9 CAP

4.0" x 4.0" Square Corner ASSEMBLED End Cap BOXED

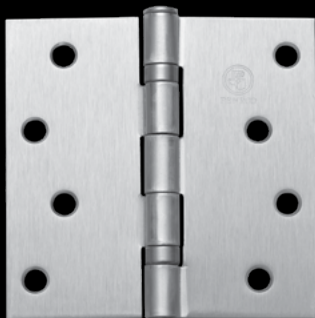
PACKED 2 PIECES PER INNER AND 100 PIECES PER MASTER
EACH INNER PACKED WITH 16 #9 x 3/4" SCREWS
MASONITE PREP



ITEM#	DESCRIPTION	CODES	REFERENCE
M25355	ANTIQU BRASS	US5	MH4.0AUCGSQ-SQABB09CAP
M25353	ANTIQU NICKEL	US15A	MH4.0AUCGSQ-SQANB09CAP
M25354	BRIGHT BRASS	US3	MH4.0AUCGSQ-SQBBB09CAP
M25357	BRIGHT CHROME	US26	MH4.0AUCGSQ-SQCMB09CAP
M25295	COLONIAL BRONZE - DARK	US10BD	MH4.0AUCGSQ-SQCBB09CAP
M25359	DULL CHROME	US26D	MH4.0AUCGSQ-SQDCB09CAP
M25358	FLAT BLACK	US19	MH4.0AUCGSQ-SQFBB09CAP
M25294	SATIN NICKEL	US15	MH4.0AUCGSQ-SQSNB09CAP
M27083	POLISHED NICKEL	US14	MH4.0AUCGSQ-SQPNB09CAP

4.0" x 4.0" Square Corner ball bearing ASSEMBLED End Cap BOXED

PACKED 2 PIECES PER INNER AND 100 PIECES PER MASTER
EACH INNER PACKED WITH 16 #9 x 3/4" SCREWS
MASONITE PREP



ITEM#	DESCRIPTION	CODES	REFERENCE
M25362	ANTIQU BRASS	US5	MH4.0BB CGSQ-SQABB09CAP
M25364	ANTIQU NICKEL	US15A	MH4.0BB CGSQ-SQANB09CAP
M25361	BRIGHT BRASS	US3	MH4.0BB CGSQ-SQBBB09CAP
M25365	BRIGHT CHROME	US26	MH4.0BB CGSQ-SQCMB09CAP
M25363	COLONIAL BRONZE - DARK	US10BD	MH4.0BB CGSQ-SQCBB09CAP
M25846	DULL BRASS	US4	MH4.0BB CGSQ-SQDBB09CAP
M25366	DULL CHROME	US26D	MH4.0BB CGSQ-SQDCB09CAP
M25367	SATIN NICKEL	US15	MH4.0BB CGSQ-SQSNB09CAP
M26304	FLAT BLACK	US19	MH4.0BB CGSQ-SQFBB09CAP
M27084	POLISHED NICKEL	US14	MH4.0BB CGSQ-SQPNB09CAP

4.0" x 4.0" 5/8" RADIUS x Square Corner ASSEMBLED

BULK PACKED 100 PIECES PER MASTER
MASONITE PREP 2.5 MM



LEFT HANDED

ITEM#	DESCRIPTION	CODES	REFERENCE
M16424	ANITQUE BRASS	US5	MH4.0ALCG5/8-SQAB
M25378	BRIGHT CHROME	US26	MH4.0ALCG5/8-SQCM
M25269	COLONIAL BRONZE - DARK	US10BD	MH4.0ALCG5/8-SQCB
M14237	DULL CHROME	US26D	MH4.0ALCG5/8-SQDC
M25373	DULL NICKEL	LUS15	MH4.0ALCG5/8-SQDN
M25909	LIGHT BRASS	US3-4	MH4.0ALCG5/8-SQLB
M25266	SATIN NICKEL	US15	MH4.0ALCG5/8-SQSN
M25957	ZINC DICHROMATE	US2D	MH4.0ALCG5/8-SQZC
M27126	BRUSHED ZINC	US2BZ	MH4.0ALCG5/8-SQBZ #9
M27123	FLAT BLACK	US19	MH4.0ALCG5/8-SQFB
M26472	OLD WORLD BRONZE	OWB	MH4.0ALCG5/8-SQOWB#9



LEFT HANDED SAFETY STUD

ITEM#	DESCRIPTION	CODES	REFERENCE
M10276	ZINC DICHROMATE	US2D	MH4.0ALCG5/8-SQZCSTD

4.0" x 4.0" 5/8" RADIUS x Square Corner ASSEMBLED

BULK PACKED 100 PIECES PER MASTER
MASONITE PREP 2.5 MM

RIGHT HANDED

ITEM#	DESCRIPTION	CODES	REFERENCE
M16425	ANTIQU BRASS	US5	MH4.0ARCG5/8-SQAB
M16426	ANTIQU NICKEL	US15A	MH4.0ARCG5/8-SQAN
M25377	BRIGHT CHROME	US26	MH4.0ARCG5/8-SQCM
M25268	COLONIAL BRONZE - DARK	US10BD	MH4.0ARCG5/8-SQCB
M14238	DULL CHROME	US26D	MH4.0ARCG5/8-SQDC
M25372	DULL NICKEL	LUS15	MH4.0ARCG5/8-SQDN
M25908	LIGHT BRASS	US3-4	MH4.0ARCG5/8-SQLB
M25265	SATIN NICKEL	US15	MH4.0ARCG5/8-SQSN
M25958	ZINC DICHROMATE	US2D	MH4.0ARCG5/8-SQZC
M27125	BRUSHED ZINC	US2BZ	MH4.0ARCG5/8-SQBZ #9
M27122	FLAT BLACK	US19	MH4.0ARCG5/8-SQFB
M26471	OLD WORLD BRONZE	OWB	MH4.0ARCG5/8-SQOWB#9

RIGHT HANDED SAFETY STUD

ITEM#	DESCRIPTION	CODES	REFERENCE
M10357	ZINC DICHROMATE	US2D	MH4.0ARCG5/8-SQZCSTD

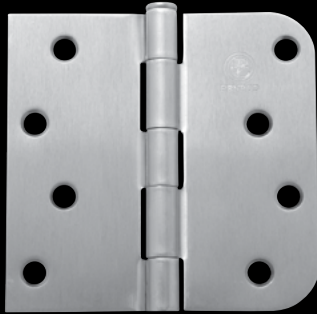
RIVETED FOR OUTSWING

BULK PACKED 100 PIECES PER MASTER
MASONITE PREP 2.5 MM

ITEM#	DESCRIPTION	CODES	REFERENCE
M25270	COLONIAL BRONZE - DARK	US10BD	MH4.0ARCG5/8-SQCBRIV
M25915	DULL CHROME	US26D	MH4.0ARCG5/8-SQDCRIV
M25374	DULL NICKEL	LUS15	MH4.0ARCG5/8-SQDNRIV
M25267	SATIN NICKEL	US15	MH4.0ARCG5/8-SQSNRIV
M10356	ZINC DICHROMATE	US2D	MH4.0ARCG5/8-SQZCRIV
M26320	BRIGHT CHROME	US26	MH4.0ALCG5/8-SQ CM RIV
M27127	BRUSHED ZINC	US2BZ	MH4.0ARCG5/8-SQBZ RV9
M27124	FLAT BLACK	US19	MH4.0ARCG5/8-SQFBRIV
M26474	OLD WORLD BRONZE	OWB	MH4.0ARCG5/8-SQOWBRV9
M26323	BRIGHT BRASS	US3	MH4.0ARCG5/8-SQ BBRV9

**4.0" x 4.0"
5/8" RADIUS x Square Corner
ASSEMBLED BOXED**

PACKED 2 PIECES PER INNER AND 100 PIECES PER MASTER
EACH INNER PACKED WITH 18 #9 x 3/4" SCREWS
MASONITE PREP 2.5 MM



LEFT HANDED

ITEM#	DESCRIPTION	CODES	REFERENCE
M25018	STAINLESS STEEL	US32D	MH4.0ALCG5/8-SQSSBOX



RIGHT HANDED

ITEM#	DESCRIPTION	CODES	REFERENCE
M25017	STAINLESS STEEL	US32D	MH4.0ARCG5/8-SQSSBOX

RIVETED FOR OUTSWING BOXED

PACKED 2 PIECES PER INNER AND 100 PIECES PER MASTER
EACH INNER PACKED WITH 18 #9 x 3/4" SCREWS
MASONITE PREP 2.5 MM



ITEM#	DESCRIPTION	CODES	REFERENCE
M25235	STAINLESS STEEL	US32D	MH4.0ARCG5/8-SQSSBOXRIV

4.0" x 4.0"
5/8" RADIUS x Square Corner
UNASSEMBLED WITH SAFETY STUD

BULK PACKED 100 PIECES PER MASTER
MASONITE PREP 2.5 MM



ITEM#	DESCRIPTION	CODES	REFERENCE
M10963	ZINC DICHROMATE	US2D	MH4.0UNCG5/8-SQ ZC STD

4.0" x 4.0"
5/8" RADIUS x Square Corner
ASSEMBLED BALL BEARING

BULK PACKED 100 PIECES PER MASTER
MASONITE PREP 2.5 MM



LEFT HANDED

ITEM#	DESCRIPTION	CODES	REFERENCE
M24566	ANTIQUE BRASS	US5	MH4.0BLCG5/8-SQ AB#9
M24569	ANTIQUE NICKEL	US15A	MH4.0BLCG5/8-SQ AN#9
M24565	BRIGHT BRASS	US3	MH4.0BLCG5/8-SQ BB#9
M24567	COLONIAL BRONZE - DARK	US10BD	MH4.0BLCG5/8-SQ CB#9
M24570	DULL CHROME	US26D	MH4.0BLCG5/8-SQ DC#9
M24568	SATIN NICKEL	US15	MH4.0BLCG5/8-SQ SN#9
M24564	ZINC DICHROMATE	US2D	MH4.0BLCG5/8-SQ ZC#9
M26363	BRIGHT CHROME	US26	MH4.0BLCG5/8-SQ CM#9
M26502	FLAT BLACK	US19	MH4.0BLCG5/8-SQ FB#9

RIVETED FOR OUTSWING

BULK PACKED 100 PIECES PER MASTER
MASONITE PREP 2.5 MM



ITEM#	DESCRIPTION	CODES	REFERENCE
M25933	WHITE PRIMED	USP	MH4.0BLCG5/8-SQWP RIV

4.0" x 4.0" 5/8" RADIUS x Square Corner ASSEMBLED BALL BEARING

BULK PACKED 100 PIECES PER MASTER
MASONITE PREP 2.5 MM

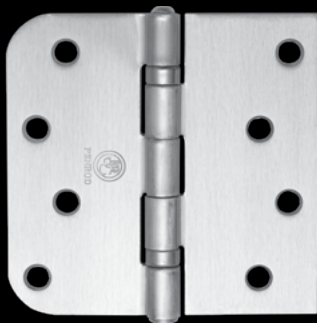


RIGHT HANDED

ITEM#	DESCRIPTION	CODES	REFERENCE
M24559	ANTIQUE BRASS	US5	MH4.0BRCG5/8-SQ AB#9
M24562	ANTIQUE NICKEL	US15A	MH4.0BRCG5/8-SQ AN#9
M24558	BRIGHT BRASS	US3	MH4.0BRCG5/8-SQ BB#9
M24560	COLONIAL BRONZE	US10BD	MH4.0BRCG5/8-SQ CB#9
M24563	DULL CHROME	US26D	MH4.0BRCG5/8-SQ DC#9
M24561	SATIN NICKEL	US15	MH4.0BRCG5/8-SQ SN#9
M24557	ZINC DICHROMATE	US2D	MH4.0BRCG5/8-SQ ZC#9
M26362	BRIGHT CHROME	US26	MH4.0BRCG5/8-SQ CM#9
M26501	FLAT BLACK	US19	MH4.0BRCG5/8-SQ FB#9

RIVETED FOR OUTSWING

BULK PACKED 100 PIECES PER MASTER
MASONITE PREP 2.5 MM



ITEM#	DESCRIPTION	CODES	REFERENCE
M24573	ANTIQUE BRASS	US5	MH4.0BRCG5/8-SQ ABRV9
M24576	ANTIQUE NICKEL	US15A	MH4.0BRCG5/8-SQ ANRV9
M24572	BRIGHT BRASS	US3	MH4.0BRCG5/8-SQ BBRV9
M24574	COLONIAL BRONZE	US10BD	MH4.0BRCG5/8-SQ CBRV9
M24577	DULL CHROME	US26D	MH4.0BRCG5/8-SQ DCRV9
M24575	SATIN NICKEL	US15	MH4.0BRCG5/8-SQ SNRV9
M24571	ZINC DICHROMATE	US2D	MH4.0BRCG5/8-SQ ZCRV9

4.0" x 4.0"
5/8" RADIUS x Square Corner
ASSEMBLED BALL BEARING BOXED

PACKED 2 PIECES PER INNER AND 100 PIECES PER MASTER
 EACH INNER PACKED WITH 18 #9 x 3/4" SCREWS
 MASONITE PREP 2.5 MM



LEFT HANDED

ITEM#	DESCRIPTION	CODES	REFERENCE
M25020	STAINLESS STEEL	US32D	MH4.OBLCG58/8-SQSSBOX



RIGHT HANDED

ITEM#	DESCRIPTION	CODES	REFERENCE
M25019	STAINLESS STEEL	US32D	MH4.OBRCG5/8-SQSSBOX

4.0" x 4.0"
5/8" RADIUS x Square Corner
ASSEMBLED BALL BEARING RIVET BOXED

PACKED 3 PIECES PER INNER AND 96 PIECES PER MASTER
 EACH INNER PACKED WITH 24 #9 x 3/4" SCREWS
 MASONITE PREP 2.5 MM

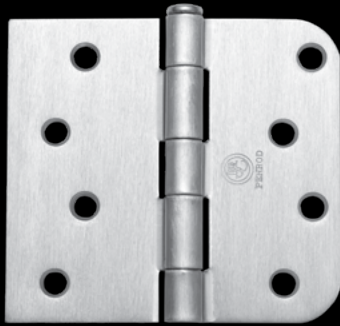


RIGHT HANDED

ITEM#	DESCRIPTION	CODES	REFERENCE
M10782	STAINLESS STEEL	US32D	MH4.OBRCG5/8-SQSS RIV

**4.0" x 4.25"
5/8" RADIUS x Square Corner
CORNER ASSEMBLED**

BULK PACKED 100 PIECES PER MASTER
MASONITE PREP 2.5 MM



LEFT HANDED

ITEM#	DESCRIPTION	CODES	REFERENCE
M25105	ANTIQU BRASS	US5	MH4.0ALCG5/8-SQAB1/4
M25943	ANTIQU NICKEL	US15A	MH4.0ALCG5/8-SQAN1/4
M25106	BRIGHT BRASS	US3	MH4.0ALCG5/8-SQBB1/4
M25107	COLONIAL BRONZE - DARK	US10BD	MH4.0ALCG5/8-SQCB1/4
M25108	SATIN NICKEL	US15	MH4.0ALCG5/8-SQSN1/4
M25109	ZINC DICHROMATE	US2D	MH4.0ALCG5/8-SQZC1/4
M27057	FLAT BLACK	US19	MH4.0ALCG5/8-SQFB1/4

RIVETED FOR OUTSWING

BULK PACKED 100 PIECES PER MASTER
MASONITE PREP 2.5 MM



ITEM#	DESCRIPTION	CODES	REFERENCE
M25942	ANTIQU BRASS	US5	MH4.0ALCG5/8-SQAB1/4 RIV
M25945	ANTIQU NICKEL	US15A	MH4.0ALCG5/8-SQAN1/4 RIV
M25941	DULL CHROME	US26D	MH4.0ALCG5/8-SQDC1/4 RIV

4.0" x 4.25" 5/8" RADIUS x Square Corner CORNER ASSEMBLED

BULK PACKED 100 PIECES PER MASTER
MASONITE PREP 2.5 MM

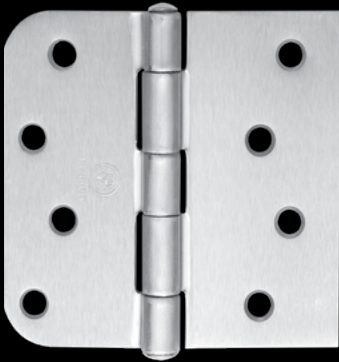


RIGHT HANDED

ITEM#	DESCRIPTION	CODES	REFERENCE
M25110	ANTIQUÉ BRASS	US5	MH4.0ARCG5/8-SQAB1/4
M25944	ANTIQUÉ NICKEL	US15A	MH4.0ARCG5/8-SQAN1/4
M25111	BRIGHT BRASS	US3	MH4.0ARCG5/8-SQBB1/4
M25112	COLONIAL BRONZE - DARK	US10BD	MH4.0ARCG5/8-SQCB1/4
M25940	DULL CHROME	US26D	MH4.0ARCG5/8-SQDC1/4
M25113	SATIN NICKEL	US15	MH4.0ARCG5/8-SQSN1/4
M25114	ZINC DICHROMATE	US2D	MH4.0ARCG5/8-SQZC1/4
M26317	BRIGHT CHROME	US26D	MH4.0ARCG5/8-SQCM1/4
M27056	FLAT BLACK	US19	MH4.0ARCG5/8-SQFB1/4
M27242	OLD WORLD BRONZE	OWB	MH4.0ARCG5/8-SQOWB1/4

RIVETED FOR OUTSWING

BULK PACKED 100 PIECES PER MASTER
MASONITE PREP 2.5 MM



ITEM#	DESCRIPTION	CODES	REFERENCE
M25115	BRIGHT BRASS	US3	MH4.0ARCG5/8-SQBB1/4RIV
M25116	COLONIAL BRONZE - DARK	US10BD	MH4.0ARCG5/8-SQCB1/4RIV
M25117	SATIN NICKEL	US15	MH4.0ARCG5/8-SQSN1/4RIV
M25946	STAINLESS STEEL	US32D	MH4.0ARCG5/8-SQSS1/4RIV
M25118	ZINC DICHROMATE	US2D	MH4.0ARCG5/8-SQZC1/4RIV
M26319	BRIGHT CHROME	US26	MH4.0ALCG5/8-SQ CM RIV 1/4
M27055	FLAT BLACK	US19	MH4.0ARCG5/8-SQFB1/4RIV

**4.0" x 4.25"
5/8" RADIUS x Square Corner
CORNER ASSEMBLED WITH LOCATOR TABS**

BULK PACKED 100 PIECES PER MASTER
MASONITE PREP 2.5 MM



LEFT HANDED

ITEM#	DESCRIPTION	CODES	REFERENCE
M26041	COLONIAL BRONZE	US10BD	MH4.0ALCG5/8-SQCB1/4LT
M26039	SATIN NICKEL	US15	MH4.0ALCG5/8-SQSN1/4LT
M26043	ZINC DICHROMATE	US2D	MH4.0ALCG5/8-SQZC1/4LT

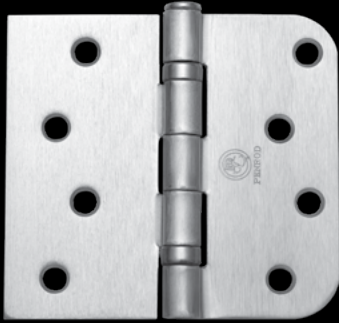


RIGHT HANDED

ITEM#	DESCRIPTION	CODES	REFERENCE
M26042	COLONIAL BRONZE	US10BD	MH4.0ARCG5/8-SQCB1/4LT
M26040	SATIN NICKEL	US15	MH4.0ARCG5/8-SQSN1/4LT
M26044	ZINC DICHROMATE	US2D	MH4.0ARCG5/8-SQZC1/4LT

4.0" x 4.25" 5/8" RADIUS x Square Corner BALL BEARING ASSEMBLED

BULK PACKED 100 PIECES PER MASTER
MASONITE PREP 2.5 MM



LEFT HANDED

ITEM#	DESCRIPTION	CODES	REFERENCE
M25208	ANTIQU BRASS	US5	MH4.0BLCG5/8-SQAB1/4
M25119	BRIGHT BRASS	US3	MH4.0BLCG5/8-SQBB1/4
M25120	COLONIAL BRONZE - DARK	US10BD	MH4.0BLCG5/8-SQCB1/4
M25369	DULL CHROME	US26D	MH4.0BLCG5/8-SQDC1/4
M25121	SATIN NICKEL	US15	MH4.0BLCG5/8-SQSN1/4
M25122	ZINC DICHROMATE	US2D	MH4.0BLCG5/8-SQZC1/4
M26311	BRIGHT CHROME	US26	MH4.0BLCG5/8-SQCM1/4

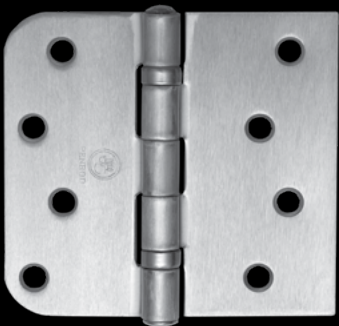


RIGHT HANDED

ITEM#	DESCRIPTION	CODES	REFERENCE
M25207	ANTIQU BRASS	US5	MH4.0BRCG5/8-SQAB1/4
M25123	BRIGHT BRASS	US3	MH4.0BRCG5/8-SQBB1/4
M25124	COLONIAL BRONZE - DARK	US10BD	MH4.0BRCG5/8-SQCB1/4
M25368	DULL CHROME	US26D	MH4.0BRCG5/8-SQDC1/4
M25125	SATIN NICKEL	US15	MH4.0BRCG5/8-SQSN1/4
M25126	ZINC DICHROMATE	US2D	MH4.0BRCG5/8-SQZC1/4
M26312	BRIGHT CHROME	US26	MH4.0BRCG5/8-SQCM1/4

RIVETED FOR OUTSWING

BULK PACKED 100 PIECES PER MASTER
MASONITE PREP 2.5 MM



ITEM#	DESCRIPTION	CODES	REFERENCE
M26064	COLONIAL BRONZE - DARK	US10BD	MH4.0BRCG5/8-SQCB1/4RIV
M26065	SATIN NICKEL	US15	MH4.0BRCG5/8-SQSN1/4RIV
M26066	ZINC DICHROMATE	US2D	MH4.0BRCG5/8-SQZC1/4RIV
M26313	ANTIQU BRASS	US5	MH4.0BLCG5/8-SQ AB RIV 1/4
M26314	BRIGHT CHROME	US26	MH4.0BLCG5/8-SQ CM RIV 1/4

4.0" x 4.0" 5/8" RADIUS x Square Corner ASSEMBLED

BULK PACKED 100 PIECES PER MASTER
MASONITE PREP 2.2 MM

LEFT HANDED

ITEM#	DESCRIPTION	CODES	REFERENCE
M25917	ANTIQU BRASS	US5	MH4.0ALGE5/8-SQ AB#9
M14895	BRIGHT BRASS	US26	MH4.0ALGE5/8-SQ BB#9
M19872	COLONIAL BRONZE - DARK	US10BD	MH4.0ALGE5/8-SQ CB#9
M17376	DULL CHROME	US26D	MH4.0ALGE5/8-SQ DC#9
M21231	FLAT BLACK	US19	MH4.0ALGE5/8-SQ FB
M17523	SATIN NICKEL	US15	MH4.0ALGE5/8-SQ SN#9

LEFT HANDED SAFETY STUD

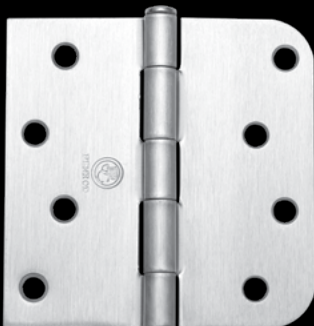
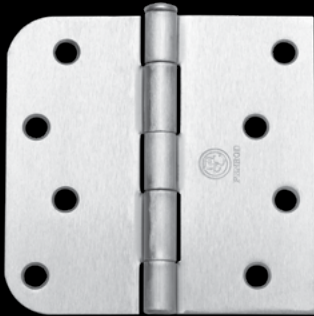
ITEM#	DESCRIPTION	CODES	REFERENCE
M25073	LIGHT BRASS	US3-4	MH4.0ALGE5/8-SQ LBSTD
M24891	WHITE PRIMED	USP	MH4.0ALGE5/8-SQ WPSTD
M20398	ZINC DICHROMATE	US2D	MH4.0ALGE5/8-SQ ZCSTD

RIGHT HANDED

ITEM#	DESCRIPTION	CODES	REFERENCE
M25916	ANTIQU BRASS	US5	MH4.0ARGE5/8-SQ AB#9
M14896	BRIGHT BRASS	US26	MH4.0ARGE5/8-SQ BB#9
M19873	COLONIAL BRONZE - DARK	US10BD	MH4.0ARGE5/8-SQ CB#9
M17377	DULL CHROME	US26D	MH4.0ARGE5/8-SQ DC#9
M21230	FLAT BLACK	US19	MH4.0ARGE5/8-SQ FB
M17524	SATIN NICKEL	US15	MH4.0ARGE5/8-SQ SN#9

RIGHT HANDED SAFETY STUD

ITEM#	DESCRIPTION	CODES	REFERENCE
M25072	LIGHT BRASS	US3-4	MH4.0ARGE5/8-SQ LBSTD
M24894	WHITE PRIMED	USP	MH4.0ARGE5/8-SQ WPSTD
M18443	ZINC DICHROMATE	US2D	MH4.0ARGE5/8-SQ ZCSTD



4.0" x 4.0"
5/8" RADIUS x Square Corner
ASSEMBLED
RIVETED FOR OUTSWING

BULK PACKED 100 PIECES PER MASTER
MASONITE PREP 2.2 MM



ITEM#	DESCRIPTION	CODES	REFERENCE
M20915	BRIGHT BRASS	US3	MH4.0ARGE5/8-SQ BBRV9
M25999	COLONIAL BRONZE - DARK	US10BD	MH4.0ARGE5/8-SQ CBRV9
M18041	DULL CHROME	US26D	MH4.0ARGE5/8-SQ DCRV9
M22428	FLAT BLACK	US19	MH4.0ARGE5/8-SQ FBRV9
M15735	LIGHT BRASS	US3-4	MH4.0ARGE5/8-SQ LBRV9
M19683	SATIN NICKEL	US15	MH4.0ARGE5/8-SQ SNRV9
M25103	WHITE PRIMED	USP	MH4.0ARGE5/8-SQ WPRIV
M24904	ZINC DICHROMATE	US2D	MH4.0ARGE5/8-SQ ZCRIV

4.0" x 4.0"
5/8" RADIUS x Square Corner
UNASSEMBLED WITH SAFETY STUD

BULK PACKED 100 PIECES PER MASTER
MASONITE PREP 2.2 MM



ITEM#	DESCRIPTION	CODES	REFERENCE
M19205	SATIN NICKEL	US15	MH4.0UNGE5/8-SQ SNSTD
M24892	WHITE PRIMED	USP	MH4.0UNGE5/8-SQ WPSTD
M14964	ZINC DICHROMATE	US2D	MH4.0UNGE5/8-SQ ZCSTD

4.0" x 4.0" 5/8" RADIUS x Square Corner SELF ALIGNING HINGES

BULK PACKED 100 PIECES PER MASTER
THERMA TRU PREP



LEFT HANDED

ITEM#	DESCRIPTION	CODES	REFERENCE
M24263	ANTIQUÉ BRASS	US5	MH4.0ALTT5/8-SQ AB#9
M22294	COLONIAL BRONZE - DARK	US10BD	MH4.0ALTT5/8-SQ CB#9
M22298	SATIN NICKEL	US15	MH4.0ALTT5/8-SQ SN#9
M10346	ZINC DICHROMATE	US2D	MH4.0ALTT5/8-SQ ZC



RIGHT HANDED

ITEM#	DESCRIPTION	CODES	REFERENCE
M22289	ANTIQUÉ BRASS	US5	MH4.0ARTT5/8-SQ AB#9
M22293	COLONIAL BRONZE - DARK	US10BD	MH4.0ARTT5/8-SQ CB#9
M22297	SATIN NICKEL	US15	MH4.0ARTT5/8-SQ SN#9
M10457	ZINC DICHROMATE	US2D	MH4.0ARTT5/8-SQ ZC

RIVETED FOR OUTSWING

BULK PACKED 100 PIECES PER MASTER
THERMA TRU PREP



ITEM#	DESCRIPTION	CODES	REFERENCE
M10461	ZINC DICHROMATE	US2D	MH4.0ARTT5/8-SQ ZCRIV
M26264	COLONIAL BRONZE	US10BD	MH4.0ARTT5/8-SQ CBRV9
M26263	SATIN NICKEL	US15	MH4.0ARTT5/8-SQ SNRV9

4.0" x 4.0"
5/8" RADIUS x Square Corner
SELF ALIGNING HINGES UNASSEMBLED

BULK PACKED 100 PIECES PER MASTER
 THERMA TRU PREP



ITEM#	DESCRIPTION	CODES	REFERENCE
M14370	ZINC DICHROMATE	US2D	MH4.0UNTT5/8-SQ ZC#9

4.0" x 4.0"
5/8" RADIUS x Square Corner
SELF ALIGNING HINGES WITH LOCATOR TAB
UNASSEMBLED

BULK PACKED 100 PIECES PER MASTER
 THERMA TRU PREP



ITEM#	DESCRIPTION	CODES	REFERENCE
M25886	ANTIQUÉ BRASS	US5	MH4.0UNTT5/8-SQ AB LT STD #9
M25887	ANTIQUÉ NICKEL	US15A	MH4.0UNTT5/8-SQ AN LT STD #9
M25883	COLONIAL BRONZE - DARK	US10BD	MH4.0UNTT5/8-SQ CB LT STD #9
M25884	DULL CHROME	US26D	MH4.0UNTT5/8-SQ DC LT STD #9
M25881	SATIN NICKEL	US15	MH4.0UNTT5/8-SQ SN LT STD #9
M25885	WHITE PRIMED	USP	MH4.0UNTT5/8-SQ WP LT STD #9
M25882	ZINC DICHROMATE	US2D	MH4.0UNTT5/8-SQ ZC LT STD #9
M27177	OLD WORLD BRONZE	OWB	MH4.0UNTT5/8-SQ OWB LT STD #9
M26070	STAINLESS STEEL	US32	MH4.0UNTT5/8-SQ SS LT STD #9

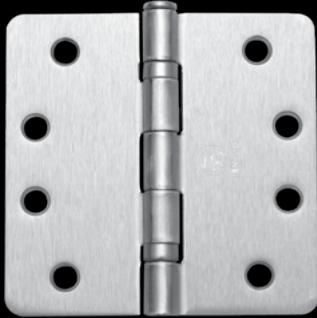
4.0" x 4.0"
1/4" RADIUS x 1/4" RADIUS
ASSEMBLED BOXED

PACKED 3 PIECES PER INNER AND 96 PIECES PER MASTER
 EACH INNER PACKED WITH 24 #12 x 1/2" MACHINE SCREWS (WITH #10 HEAD)
 AND 24 #10 x 1 1/4" WOOD SCREWS
 TIMELY PREP



ITEM#	DESCRIPTION	CODES	REFERENCE
M24437	BRIGHT BRASS	US3	MH4.0AUTP1/4-1/4BBTBX
M24436	COLONIAL BRONZE - DARK	US10BD	MH4.0AUTP1/4-1/4CBTBX
M17268	DULL BRASS	US4	MH4.0AUTP1/4-1/4DBTBX
M17269	DULL CHROME	US26D	MH4.0AUTP1/4-1/4DCTBX
M24438	SATIN NICKEL	US15	MH4.0AUTP1/4-1/4SNTBX

4.0" x 4.0"
1/4" RADIUS x 1/4" RADIUS
ASSEMBLED BALL BEARING BOXED



PACKED 3 PIECES PER INNER AND 96 PIECES PER MASTER
 EACH INNER PACKED WITH 24 #12 x 1/2" MACHINE SCREWS (WITH #10 HEAD)
 AND 24 #10 x 1 1/4" WOOD SCREWS
 TIMELY PREP

ITEM#	DESCRIPTION	CODES	REFERENCE
M24444	BRIGHT BRASS	US3	MH4.OBBTP1/4-1/4BBTBX
M24442	COLONIAL BRONZE - DARK	US10BD	MH4.OBBTP1/4-1/4CBTBX
M17271	DULL CHROME	US26D	MH4.OBBTP1/4-1/4DCTBX
M24443	SATIN NICKEL	US15	MH4.OBBTP1/4-1/4SNTBX

HINGE PINS FOR 4.0" HINGES
6MM FITS MASONITE AND TAYLOR PREP



PACKED 100 PIECES PER INNER AND 400 PER MASTER

ITEM#	DESCRIPTION	CODES	REFERENCE
M26071	COLONIAL BRONZE - DARK	US10BD	MM4.OPINS5/8-5/8CB6MM
M24510	DULL CHROME	US26D	MM4.OPINS5/8-5/8DC6MM
M26142	SATIN NICKEL	US15	MM4.OPINS5/8-5/8SN6MM

ALL RESIDENTIAL SPRING HINGES ARE GRADE 1 AND CONTAIN 2 HINGES PER INNER BOX. PACKED WITH SCREWS, ALLEN WRENCH AND TENSION PINS.

3.5" x 3.5" 5/8" RADIUS x 5/8" RADIUS SPRING HINGES

PACKED 2 PIECES PER INNER AND 40 PIECES PER MASTER
EACH INNER PACKED WITH 12 EACH #10 x 3/4" SCREWS AND
12 EACH #10 x 1/2" MACHINE SCREWS



ITEM#	DESCRIPTION	CODES	REFERENCE
M24690	ANTIQUE BRASS	US5	MH3.5AUIIN5/8-5/8ABSPI
M10078	BRIGHT BRASS	US3	MH3.5AUIIN5/8-5/8BBSPI
M24689	COLONIAL BRONZE - DARK	US10BD	MH3.5AUIIN5/8-5/8CBSPI
M10146	DULL BRASS	US4	MH3.5AUIIN5/8-5/8DBSPI
M24691	DULL CHROME	US26D	MH3.5AUIIN5/8-5/8DCSPI
M24692	OIL RUBBED BRONZE - LIGHT	US10B	MH3.5AUIIN5/8-5/8OBSPI
M24693	SATIN NICKEL	US15	MH3.5AUIIN5/8-5/8SNSPI
M15963	ZINC DICHROMATE	US2D	MH3.5AUIIN5/8-5/8ZCSPi
M26164	BRIGHT CHROME	US26	MH3.5AUIIN5/8-5/8DCSPI
M27198	WHITE PRIMED	USP	MH3.5AUIIN5/8-5/8WPSPi
M27199	FLAT BLACK	US19	MH3.5AUIIN5/8-5/8FBSPi

4.0" x 4.0" 5/8" RADIUS x 5/8" RADIUS SPRING HINGES

PACKED 2 PIECES PER INNER AND 40 PIECES PER MASTER
EACH INNER PACKED WITH 16 EACH #10 x 3/4" SCREWS AND
16 EACH #10 x 1/2" MACHINE SCREWS
TAYLOR PREP



ITEM#	DESCRIPTION	CODES	REFERENCE
M17567	ANTIQUE BRASS	US5	MH4.0AUPC5/8-5/8ABSPI
M16721	ANTIQUE NICKEL	US15A	MH4.0AUPC5/8-5/8ANSPI
M16807	BLACK PRIMED	US1D	MH4.0AUPC5/8-5/8BPSPI
M10568	BRIGHT BRASS	US3	MH4.0AUPC5/8-5/8BBSPI
M17616	BRIGHT CHROME	US26	MH4.0AUPC5/8-5/8CMSPI
M18527	COLONIAL BRONZE - DARK	US10BD	MH4.0AUPC5/8-5/8CBSPI
M10603	DULL BRASS	US4	MH4.0AUPC5/8-5/8DBSPI
M17617	DULL CHROME	US26D	MH4.0AUPC5/8-5/8DCSPI
M25022	FLAT BLACK	US19	MH4.0AUPC5/8-5/8FBSPi
M15442	LIGHT BRASS	US3-4	MH4.0AUPC5/8-5/8LBSPI
M19864	OIL RUBBED BRONZE - LIGHT	US10B	MH4.0AUPC5/8-5/8OBSPi
M10638	WHITE PRIMED	USP	MH4.0AUPC5/8-5/8WPSPi
M16724	SATIN NICKEL	US15	MH4.0AUPC5/8-5/8SNSPI
M10668	ZINC DICHROMATE	US2D	MH4.0AUPC5/8-5/8ZCSPi

4.0" x 4.0" 1/4" RADIUS x 1/4" RADIUS SPRING HINGES



PACKED 2 PIECES PER INNER AND 40 PIECES PER MASTER
EACH INNER PACKED WITH 16 EACH #10 x 3/4" SCREWS AND
16 EACH #10 x 1/2" MACHINE SCREWS
TAYLOR PREP

ITEM#	DESCRIPTION	CODES	REFERENCE
M21161	ANTIQUÉ BRASS	US5	MH4.0AUPC1/4-1/4ABSPI
M21227	ANTIQUÉ NICKEL	US15A	MH4.0AUPC1/4-1/4ANSPI
M10523	BRIGHT BRASS	US3	MH4.0AUPC1/4-1/4BBSPI
M21229	BRIGHT CHROME	US26	MH4.0AUPC1/4-1/4CMSPI
M18528	COLONIAL BRONZE - DARK	US10BD	MH4.0AUPC1/4-1/4CBSPI
M10531	DULL BRASS	US4	MH4.0AUPC1/4-1/4DBSPI
M21228	DULL CHROME	US26D	MH4.0AUPC1/4-1/4DCSPI
M24933	FLAT BLACK	US19	MH4.0AUPC1/4-1/4FBSPI
M16723	SATIN NICKEL	US15	MH4.0AUPC1/4-1/4SNSPI

4.0" x 4.0" 1/4" RADIUS x 1/4" RADIUS SPRING HINGES



PACKED 2 PIECES PER INNER AND 40 PIECES PER MASTER
EACH INNER BOXED WITH 16 EACH #10 x 3/4" SCREWS AND
16 EACH #10 x 1/2" MACHINE SCREWS
MASONITE PREP

ITEM#	DESCRIPTION	CODES	REFERENCE
M27077	FLAT BLACK	US19	MH4.0AUCG1/4-1/40WBSPI

4.0" x 4.0" 5/8" RADIUS x 5/8" RADIUS SPRING HINGES



PACKED 2 PIECES PER INNER AND 40 PIECES PER MASTER
EACH INNER PACKED WITH 16 EACH #10 x 3/4" SCREWS AND
16 EACH #10 x 1/2" MACHINE SCREWS
MASONITE PREP

ITEM#	DESCRIPTION	CODES	REFERENCE
M24622	ANTIQUÉ BRASS	US5	MH4.0AUCG5/8-5/8ABSPI
M24625	ANTIQUÉ NICKEL	US15A	MH4.0AUCG5/8-5/8ANSPI
M24623	BRIGHT BRASS	US3	MH4.0AUCG5/8-5/8BBSPI
M24621	COLONIAL BRONZE - DARK	US10BD	MH4.0AUCG5/8-5/8CBSPI
M15891	DULL CHROME	US26D	MH4.0AUCG5/8-5/8DCSPI
M24627	FLAT BLACK	US19	MH4.0AUCG5/8-5/8FBSPI
M24626	SATIN NICKEL	US15	MH4.0AUCG5/8-5/8SNSPI
M25856	WHITE PRIMED	USP	MH4.0AUCG5/8-5/8WPSPI
M24624	ZINC DICHROMATE	US2D	MH4.0AUCG5/8-5/8ZCSPI
M26322	BRIGHT CHROME	US26	MH4.0AUCG5/8-5/8CMSPI
M26827	OLD WORLD BRONZE	OWB	MH4.0AUCG5/8-5/8 OWB SPI
M26218	DULL NICKEL	LUS15	MH4.0AUCG5/8-5/8DNSPI
M26321	STAINLESS STEEL	US32D	MH4.0AUCG5/8-5/8SSSPI
M27089	POLISHED NICKEL	US14	MH4.0AUCG5/8-5/8PNSPI

4.0" x 4.0" SQUARE CORNER SPRING HINGES



PACKED 2 PIECES PER INNER AND 40 PIECES PER MASTER
EACH INNER PACKED WITH 16 EACH #10 x 3/4" SCREWS AND
16 EACH #10 x 1/2" MACHINE SCREWS
MASONITE PREP

ITEM#	DESCRIPTION	CODES	REFERENCE
M26048	COLONIAL BRONZE - DARK	US10BD	MH4.0AUCGSQ-SQCBSPI
M26049	DULL BRASS	US4	MH4.0AUCGSQ-SQDBSPI
M26047	SATIN NICKEL	US15	MH4.0AUCGSQ-SQSNSPI
M27472	FLAT BLACK	US19	MH4.0AUCGSQ-SQFBSPI
M27472	Flat Black	US19	MH4.0AUCGSQ-SQFBSPI

4.0" x 4.0" 5/8" RADIUS x SQUARE CORNER SPRING HINGES



PACKED 2 PIECES PER INNER AND 40 PIECES PER MASTER
EACH INNER PACKED WITH 16 EACH #10 x 3/4" SCREWS AND
16 EACH #10 x 1/2" MACHINE SCREWS
TAYLOR PREP

ITEM#	DESCRIPTION	CODES	REFERENCE
M16517	LIGHT BRASS	US3-4	MH4.0ARPC5/8-SQ LBSPi
M19693	SATIN NICKEL	US15	MH4.0ARPC5/8-SQ SNSPi
M27609	Bright Brass	US3	MH4.0ARPC5/8-SQBBSPi
M27610	ZINC DICHROMATE	US2D	MH4.0ARPC5/8-SQZCSPi
M27611	FLAT BLACK	US19	MH4.0ARPC5/8-SQFBSPi

4.0" x 4.0" 5/8" RADIUS x SQUARE CORNER SPRING HINGES



PACKED 2 PIECES PER INNER AND 40 PIECES PER MASTER
EACH INNER PACKED WITH 16 EACH #10 x 3/4" SCREWS AND
16 EACH #10 x 1/2" MACHINE SCREWS
MASONITE PREP

ITEM#	DESCRIPTION	CODES	REFERENCE
M25273	ANTIQUE BRASS	US5	MH4.0ARCG5/8-SQ ABSPI
M25042	ANTIQUE NICKEL	US15A	MH4.0ARCG5/8-SQ ANSPI
M26067	BRIGHT BRASS	US3	MH4.0ARCG5/8-SQ BBSPi
M25379	BRIGHT CHROME	US26D	MH4.0ARCG5/8-SQ CMSPI
M18557	COLONIAL BRONZE - DARK	US10BD	MH4.0ARCG5/8-SQ CBSPI
M18258	DULL CHROME	US26D	MH4.0ARCG5/8-SQ DCSPi
M25237	FLAT BLACK	US19	MH4.0ARCG5/8-SQ FBSPi
M15737	LIGHT BRASS	US3-4	MH4.0ARCG5/8-SQ LBSPi
M24446	SATIN NICKEL	US15	MH4.0ARCG5/8-SQ SNSPi
M25234	STAINLESS STEEL	US32D	MH4.0ARCG5/8-SQ SSSPi
M14295	WHITE PRIMED	USP	MH4.0ARCG5/8-SQ WPSPI
M14943	ZINC DICHROMATE	US2D	MH4.0ARCG5/8-SQ ZCSPi
M26067	BRIGHT BRASS	US3	MH4.0ARCG5/8-SQ BBSPi

4.0" x 4.25" 5/8" RADIUS x SQUARE CORNER SPRING HINGES



PACKED 2 PIECES PER INNER AND 40 PIECES PER MASTER
EACH INNER PACKED WITH 16 EACH #10 x 3/4" SCREWS AND
16 EACH #10 x 1/2" MACHINE SCREWS
MASONITE PREP

ITEM#	DESCRIPTION	CODES	REFERENCE
M25287	SATIN NICKEL	US15	MH4.0ARCG5/8-SQSN1/4SPI
M25288	ZINC DICHROMATE	US2D	MH4.0ARCG5/8-SQZC1/4SPI
M26366	COLONIAL BRONZE	US10BD	MH4.0ARCG5/8-SQCB1/4SPI
M26503	BRIGHT CHROME	US26	MH4.0ARCG5/8-SQCM1/4SPI
M27510	STAINLESS STEEL	US32D	MH4.0ARCG5/8-SQSS1/4SPI

4.0" x 4.0" 5/8" RADIUS x 5/8" RADIUS SPRING HINGES



PACKED 2 PIECES PER INNER AND 40 PIECES PER MASTER
EACH INNER PACKED WITH 16 EACH #10 x 1 1/4" SCREWS AND
16 EACH #10 x 1/2" MACHINE SCREWS
TIMELY PREP

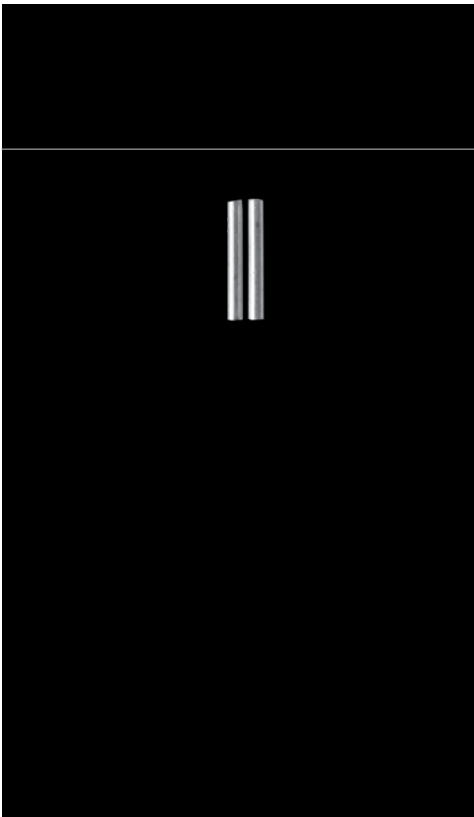
ITEM#	DESCRIPTION	CODES	REFERENCE
M15890	DULL CHROME	US26D	MH4.0AUTP5/8-5/8DCSPI

4.0" x 4.0" 1/4" RADIUS x 1/4" RADIUS SPRING HINGES



PACKED 2 PIECES PER INNER AND 40 PIECES PER MASTER
EACH INNER PACKED WITH 16 #12 x 1/2" MACHINE SCREWS (WITH #10 HEAD)
AND 16 #10 x 1 1/4" WOOD SCREWS
TIMELY PREP

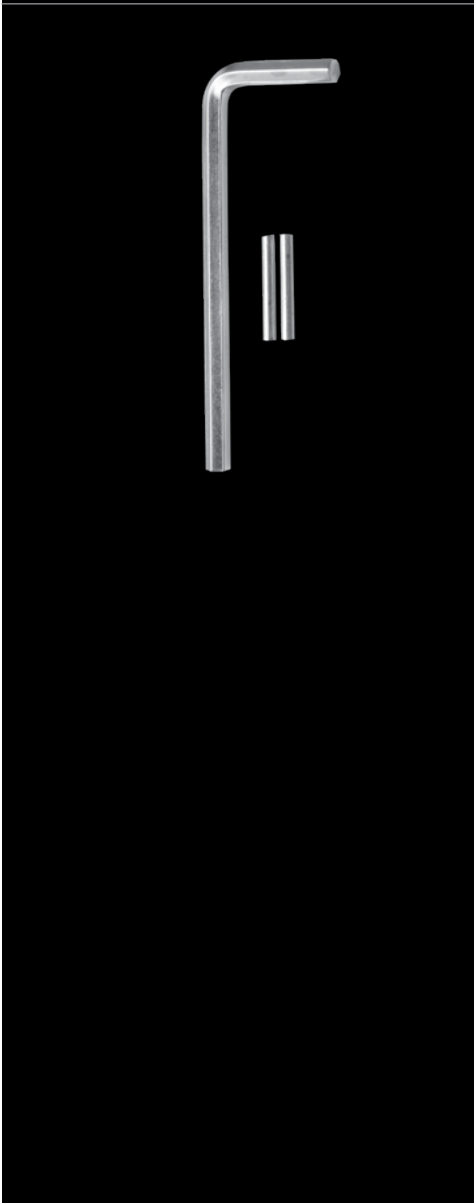
ITEM#	DESCRIPTION	CODES	REFERENCE
M24441	BRIGHT BRASS	US3	MH4.0AUTP1/4-1/4BBTISI
M24439	COLONIAL BRONZE - DARK	US10BD	MH4.0AUTP1/4-1/4CBTISI
M17192	DULL BRASS	US4	MH4.0AUTP1/4-1/4DBTISI
M17261	DULL CHROME	US26D	MH4.0AUTP1/4-1/4DCTSI
M24440	SATIN NICKEL	US15	MH4.0AUTP1/4-1/4SNTSI



TENSION PINS FOR SPRING HINGES

PACKED 100 PIECES PER INNER AND 10,000 PIECES PER MASTER

ITEM#	DESCRIPTION	CODES	REFERENCE
M11551	100 PINS PER POLY PACK		MMT-PINS-I



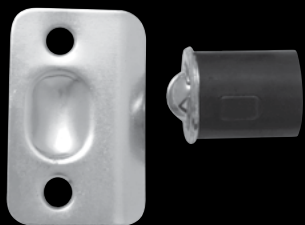
TENSION PINS AND ARMS FOR SPRING HINGES

50 PIECES PER MASTER

ITEM#	DESCRIPTION	CODES	REFERENCE
M18689	2 PINS AND 1 ARM PER POLY PACK		MMPINS-ARM-BAG-I

BALL CATCHES

100 PIECES PER INNER AND 400 PER MASTER



ITEM#	DESCRIPTION	CODES	REFERENCE
M11119	DRIVE IN EACH PIECE POLY PACKED WITH STRIKE PLATE AND SCREWS	US3-4	MMBC-LB-DRIVE IN
M11120	DRIVE IN BULK PACKED WITH STRIKE PLATES AND SCREWS	US3-4	MMBC-LB-DRIVE IN-BULK
M19224	DRIVE IN BULK PACKED WITH STRIKE PLATES AND SCREWS	US26D	MMBC-DC-DRIVE IN-BULK



M18690	DRIVE IN BULK PACKED , NO STRIKE PLATES OR SCREWS	US3-4	MMBC-LB-DRIVE IN-BULK-N/STP
--------	--	-------	-----------------------------

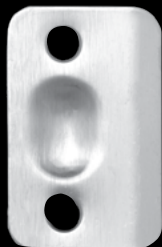
100 PIECES PER INNER AND 400 PER MASTER



ITEM#	DESCRIPTION	CODES	REFERENCE
M20709	FLANGE MOUNT BULK PACKED WITH STRIKE PLATES AND SCREWS	US3-4	MMBC-LB-FLANGE-BULK

STRIKE PLATES FOR BALL CATCHES

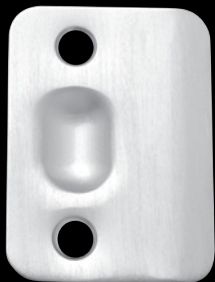
100 PIECES PER INNER AND 400 PER MASTER
PACKED WITH SCREWS



ITEM#	DESCRIPTION	CODES	REFERENCE
M14443	ANTIQUE BRASS	US5	MMSTP-AB-BULK-2 1/4
M14442	ANTIQUE NICKEL	US15A	MMSTP-AN-BULK-2 1/4
M14444	BRIGHT CHROME	US26	MMSTP-CM-BULK-2 1/4
M18532	COLONIAL BRONZE - DARK	US10BD	MMSTP-CB-BULK-2 1/4
M14307	DULL CHROME	US26D	MMSTP-DC-BULK-2 1/4
M11544	LIGHT BRASS	US3-4	MMSTP-LB-BULK-2 1/4
M14872	OIL RUBBED BRONZE - LIGHT	US10B	MMSTP-OB-BULK-2 1/4
M17277	SATIN NICKEL	US15	MMSTP-SN-BULK-2 1/4
M26348	FLAT BLACK	US19	MMSTP-FB-BULK-2 1/4

LARGE STRIKE PLATES FOR BALL CATCHES 1 5/8"

100 PIECES PER INNER AND 400 PER MASTER
PACKED WITH SCREWS



ITEM#	DESCRIPTION	CODES	REFERENCE
M24776	ANTIQUE BRASS	US5	MMSTP-AB-BULK-1 5/8-L/STP
M24782	BLACK PRIMED	US1D	MMSTP-BP-BULK-1 5/8-L/STP
M24780	BRIGHT CHROME	US26	MMSTP-CM-BULK-1 5/8-L/STP
M25857	COLONIAL BRONZE - DARK	US10BD	MMSTP-CB-BULK-1 5/8-L/STP
M24781	DULL CHROME	US26D	MMSTP-DC-BULK-1 5/8-L/STP
M25376	LIGHT BRASS	US3-4	MMSTP-LB-BULK-1 5/8-L/STP
M24778	STAIN NICKEL	US15	MMSTP-SN-BULK-1 5/8-L/STP
M26089	FLAT BLACK	US19	MMSTP-FB-BULK-1 5/8-L/STP

STRIKE PLATE DEAD BOLT COVER

100 PIECES PER INNER AND 400 PER MASTER

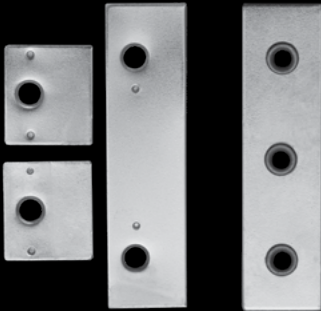
ITEM#	DESCRIPTION	CODES	REFERENCE
M16111	WHITE PRIMED	USP	MMSTP-WP-2 1/4 DB COVER



MAGNETIC CATCH PLATE

200 PIECES PER MASTER

ITEM#	DESCRIPTION	CODES	REFERENCE
M11337	LIGHT BRASS	US3-4	MMCP-LB



RIGID DOOR STOPS 3" (SCREW APPLICATION)

100 PIECES PER INNER AND 300 PER MASTER



ITEM#	DESCRIPTION	CODES	REFERENCE
M16062	ANTIQUÉ NICKEL	US15A	MMDS-AN-HD-3"
M16061	BRIGHT BRASS	US3	MMDS-BB-HD-3"
M16063	BRIGHT CHROME	US26	MMDS-CM-HD-3"
M21012	COLONIAL BRONZE - DARK	US10BD	MMDS-CB-HD-3"
M20450	FLAT BLACK	US19	MMDS-FB-HD-3"
M17554	SATIN NICKEL	US15	MMDS-SN-HD-3"

SPRING STOPS

100 PIECES PER INNER AND 500 PIECES PER MASTER
PACKED WITH SCREW



ITEM#	DESCRIPTION	CODES	REFERENCE
M11368	ANTIQUÉ BRASS	US5	MMDS-AB-3 3/4"SPRING
M15910	ANTIQUÉ NICKEL	US15A	MMDS-AN-3 3/4"SPRING
M11372	BRIGHT BRASS	US3	MMDS-BB-3 3/4"SPRING
M15911	BRIGHT CHROME	US26	MMDS-CM-3 3/4"SPRING
M21038	COLONIAL BRONZE - DARK	US10BD	MMDS-CB-3 3/4"SPRING
M15924	DULL CHROME	US26D	MMDS-DC-3 3/4"SPRING
M15925	OIL RUBBED BRONZE - LIGHT	US10B	MMDS-OB-3 3/4"SPRING
M17176	SATIN NICKEL	US15	MMDS-SN-3 3/4"SPRING

DOOR STOP HINGE PIN MOUNT

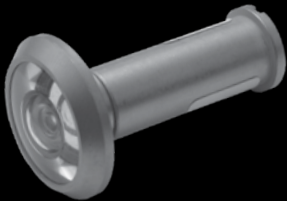
50 PIECES PER INNER AND 200 PER MASTER



ITEM#	DESCRIPTION	CODES	REFERENCE
M17637	ANTIQUE BRASS	US5	MMDS-AB-HINGE-DLX
M15926	ANTIQUE NICKEL	US15A	MMDS-AN-HINGE-DLX
M11375	BRIGHT BRASS	US3	MMDS-BB-HINGE-DLX
M21039	COLONIAL BRONZE - DARK	US10BD	MMDS-CB-HINGE-DLX
M15928	DULL CHROME	US26D	MMDS-DC-HINGE-DLX
M17177	SATIN NICKEL	US15	MMDS-SN-HINGE-DLX

DOOR VIEWERS 1/2" DIAMETER 180° GLASS - UL LISTED

25 PIECES PER INNER AND 500 PER MASTER



ITEM#	DESCRIPTION	CODES	REFERENCE
M25927	BRIGHT BRASS	US3	A DV BB 1/2 GLASS 180 SB UL 90MIN
M25924	COLONIAL BRONZE - DARK	US10BD	A DV CB 1/2 GLASS 180 SB UL 90MIN
M25926	DULL CHROME	US26D	A DV DC 1/2 GLASS 180 SB UL 90MIN
M25925	SATIN NICKEL	US15	A DV SN 1/2 GLASS 180 SB UL 90MIN

FLIP LEVER FLUSH BOLTS

25 PIECES PER INNER AND 100 PIECES PER MASTER
PACKED WITH SCREWS AND STRIKE PLATES



ITEM#	DESCRIPTION	CODES	REFERENCE
M20457	7" ANTIQUE BRASS	US5	MMFB-SB-7-AB-FLIP
M21140	7" ANTIQUE NICKEL	US15A	MMFB-SB-7-AN-FLIP
M20212	7" BRIGHT BRASS	US3	MMFB-SB-7-BB-FLIP
M24774	7" BRIGHT CHROME	US26	MMFB-SB-7-CM-FLIP
M20956	7" COLONIAL BRONZE - DARK	US10BD	MMFB-SB-7-CB-FLIP
M20315	7" DULL CHROME	US26D	MMFB-SB-7-DC-FLIP
M20861	7" SATIN NICKEL	US15	MMFB-SB-7-SN-FLIP
M26367	7" FLAT BLACK	US19	MMFB-SB-7-FB-FLIP

FLIP LEVER FLUSH BOLTS WITH 16" EXTENSION ROAD

2 PIECES PER INNER AND 50 PIECES PER MASTER
PACKED WITH SCREWS AND STRIKE PLATES



ITEM#	DESCRIPTION	CODES	REFERENCE
M17824	7" ANTIQUE BRASS	US5	MMFB-SB-EXT-7-AB-FLIP
M25375	7" ANTIQUE NICKEL	US15A	MMFB-SB-EXT-7-AN-FLIP
M17825	7" BRIGHT BRASS	US3	MMFB-SB-EXT-7-BB-FLIP
M21174	7" BRIGHT CHROME	US26	MMFB-SB-EXT-7-CM-FLIP
M21211	7" COLONIAL BRONZE - DARK	US10BD	MMFB-SB-EXT-7-CB-FLIP
M17826	7" DULL CHROME	US26D	MMFB-SB-EXT-7-DC-FLIP
M21212	7" SATIN NICKEL	US15	MMFB-SB-EXT-7-SN-FLIP
M26368	7" FLAT BLACK	US19	MMFB-SB-EXT-7-FB-FLIP

STEEL CHANNEL SLIDE ACTION FLUSH BOLTS

25 PIECES PER INNER AND 100 PIECES PER MASTER
PACKED WITH SCREWS AND STRIKE PLATE



ITEM#	DESCRIPTION	CODES	REFERENCE
M14466	ANTIQU BRASS	US5	MMFB-AB-6-1"THROW
M14467	ANTIQU NICKEL	US15A	MMFB-AN-6-1"THROW
M11396	BRIGHT BRASS	US3	MMFB-BB-6-1"THROW
M14468	BRIGHT CHROME	US26	MMFB-CM-6-1"THROW
M18531	COLONIAL BRONZE - DARK	US10BD	MMFB-CB-6-1"THROW
M14469	DULL CHROME	US26D	MMFB-DC-6-1"THROW
M16395	OIL RUBBED BRONZE - LIGHT	US10B	MMFB-OB-6-1"THROW
M17278	SATIN NICKEL	US15	MMFB-SN-6-1"THROW

6" STRIKE PLATES FOR FLIP LEVER AND SLIDE ACTION FLUSH BOLTS

50 PIECES PER INNER AND 1,000 PIECES PER MASTER
PACKED WITH SCREWS



ITEM#	DESCRIPTION	CODES	REFERENCE
M14470	ANTIQU BRASS	US5	MMSTP-AB-6 INCH
M14471	ANTIQU NICKEL	US15A	MMSTP-AN-6 INCH
M11540	BRIGHT BRASS	US3	MMSTP-BB-6 INCH
M14472	BRIGHT CHROME	US26	MMSTP-CM-6 INCH
M21166	COLONIAL BRONZE - DARK	US10BD	MMSTP-CB-6 INCH
M14473	DULL CHROME	US26D	MMSTP-DC-6 INCH
M17279	SATIN NICKEL	US15	MMSTP-SN-6 INCH

7" STRIKE PLATES FOR FLIP LEVER AND SLIDE ACTION FLUSH BOLTS

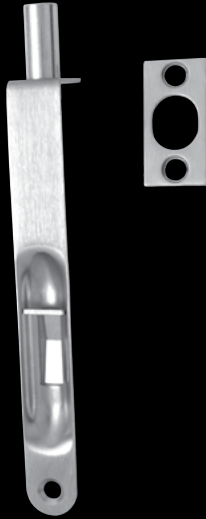
50 PIECES PER INNER AND 1,000 PIECES PER MASTER
PACKED WITH SCREWS



ITEM#	DESCRIPTION	CODES	REFERENCE
M17547	BRIGHT BRASS	US3	MMSTP-BB-7 INCH
M21156	COLONIAL BRONZE - DARK	US10BD	MMSTP-CB-7 INCH
M17546	DULL CHROME	US26D	MMSTP-DC-7 INCH

FLUSH BOLTS WITH ROUND BOTTOM

25 PIECES PER INNER AND 100 PIECES PER MASTER
PACKED WITH SCREWS AND STRIKE PLATE



ITEM#	DESCRIPTION	CODES	REFERENCE
M11393	ANTIQU BRASS	US5	MMFB-AB-ROUND
M14736	ANTIQU NICKEL	US15A	MMFB-AN-ROUND
M11398	BRIGHT BRASS	US3	MMFB-BB-ROUND
M14738	BRIGHT CHROME	US26	MMFB-CM-ROUND
M18530	COLONIAL BRONZE - DARK	US10BD	MMFB-CB-ROUND
M14737	DULL CHROME	US26D	MMFB-DC-ROUND
M14891	OIL RUBBED BRONZE - LIGHT	US10B	MMFB-OB-ROUND
M17040	SATIN NICKEL	US15	MMFB-SN-ROUND
M27014	FLAT BLACK	US19	MMFB-FB-ROUND

STRIKE PLATES FOR ROUND BOTTOM FLUSH BOLTS

100 PIECES PER INNER AND 400 PIECES PER MASTER
PACKED WITH SCREWS



ITEM#	DESCRIPTION	CODES	REFERENCE
M22159	COLONIAL BRONZE - DARK	US10BD	MMSTP-CB-ROUND
M17280	SATIN NICKEL	US15	MMSTP-SN-ROUND

2 1/8" FINGER PULLS

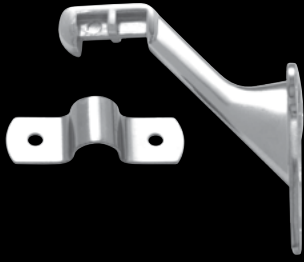
100 PIECES PER INNER AND 1,000 PIECES PER MASTER



ITEM#	DESCRIPTION	CODES	REFERENCE
M11422	ANTIQU BRASS	US5	MMFP-AB-2 1/8
M16056	ANTIQU NICKEL	US15A	MMFP-AN-2 1/8
M11423	BRIGHT BRASS	US3	MMFP-BB-2 1/8
M16057	BRIGHT CHROME	US26	MMFP-CM-2 1/8
M21040	COLONIAL BRONZE - DARK	US10BD	MMFP-CB-2 1/8
M16058	DULL CHROME	US26D	MMFP-DC-2 1/8
M17334	SATIN NICKEL	US15	MMFP-SN-2 1/8

HAND RAIL BRACKETS - LIGHT WEIGHT

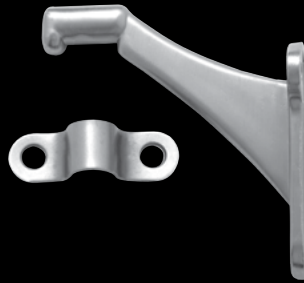
25 PIECES PER INNER AND 250 PIECES PER MASTER
PACKED WITH BRACKET PLATES AND SCREWS



ITEM#	DESCRIPTION	CODES	REFERENCE
M11429	BRIGHT BRASS	US3	MMHB-BB
M20834	DULL CHROME	US26D	MMHB-DC

JUMBO STYLE HAND RAIL BRACKETS

50 PIECES PER INNER AND 200 PIECES PER MASTER
PACKED WITH BRACKET PLATES AND SCREWS



ITEM#	DESCRIPTION	CODES	REFERENCE
M17772	ANTIQUÉ BRASS	US5	MMHB-AB-J
M16052	ANTIQUÉ NICKEL	US15A	MMHB-AN-J
M16051	BRIGHT BRASS	US3	MMHB-BB-J
M16053	BRIGHT CHROME	US26	MMHB-CM-J
M19655	COLONIAL BRONZE - DARK	US10BD	MMHB-CB-J
M16054	DULL CHROME	US26D	MMHB-DC-J
M19777	FLAT BLACK	US19	MMHB-FB-J
M16055	OIL RUBBED BRONZE - LIGHT	US10B	MMHB-OB-J
M17281	SATIN NICKEL	US15	MMHB-SN-J

HEAVY DUTY STYLE HAND RAIL BRACKETS

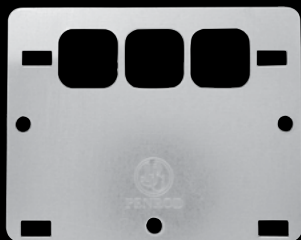
50 PIECES PER INNER AND 200 PIECES PER MASTER
PACKED WITH SCREWS



ITEM#	DESCRIPTION	CODES	REFERENCE
M19767	BRIGHT BRASS	US3	MMHB-CST-HD-BB
M25929	COLONIAL BRONZE - DARK	US10BD	MMHB-CST-HD-CB
M19776	FLAT BLACK	US19	MMHB-CST-HD-FB
M19769	SATIN NICKEL	US15	MMHB-CST-HD-SN

JAMB REINFORCEMENT PLATE

200 PIECES PER MASTER



ITEM#	DESCRIPTION	CODES	REFERENCE
M18206	JAMB REINFORCEMENT PLATE		MMJR-JAMB REINFORCEMENT-PJC

WOOD POLE SOCKETS 1 3/8"

100 PIECES PER INNER AND 500 PIECES PER MASTER
PACKED WITH SCREWS



ITEM#	DESCRIPTION	CODES	REFERENCE
M20050	CLOSET POLE SOCKET WOOD		MMPS-WOOD

PLASTIC POLE SOCKETS 1 3/8"

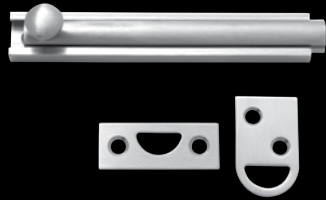
100 PIECES PER INNER AND 500 PIECES PER MASTER
PACKED WITH SCREWS



ITEM#	DESCRIPTION	CODES	REFERENCE
M20051	CLOSET POL SOCKET PLASTIC		MMPS-PLASTIC

SLIDE BOLTS - 4"

10 PIECES PER INNER AND 200 PER MASTER

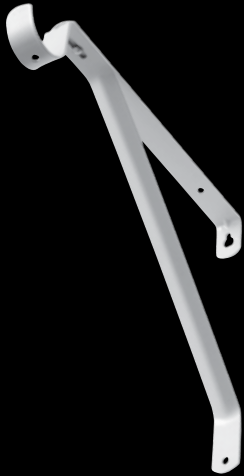


ITEM#	DESCRIPTION	CODES	REFERENCE
M24998	COLONIAL BRONZE - DARK	US10BD	A SB CB 4
M24997	SATIN NICKEL	US15	A SB SN 4
M24999	SOLID BRASS	US3	A SB SB 4

SHELF AND ROD SUPPORTS

60 PIECES PER MASTER

EACH UNIT INCLUDES TWO #10 x 1 1/2" AND TWO #10 x 3/4" SCREWS



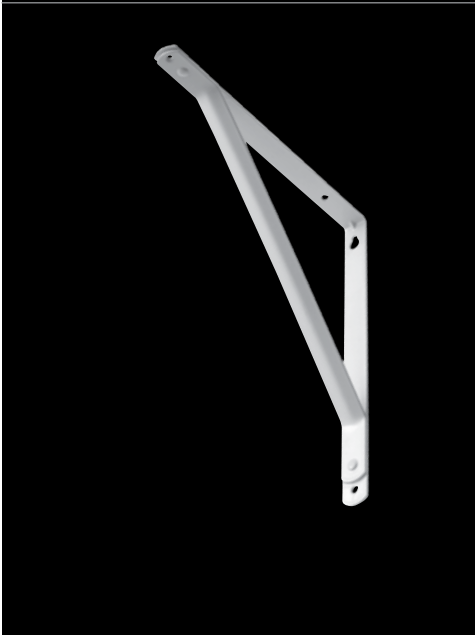
ITEM#	DESCRIPTION	CODES	REFERENCE
M24511	WHITE POWDER COAT ADJUSTABLE	USP	MMSBK-WPC-ROD-ADJ



28 PIECES PER MASTER
EACH UNIT INCLUDES TWO #10 x 1 1/2" AND TWO #10 x 3/4" SCREWS

ITEM#	DESCRIPTION	CODES	REFERENCE
M24555	WHITE POWDER COAT WITH HOOK	USP	MMSBK-WPC-ROD

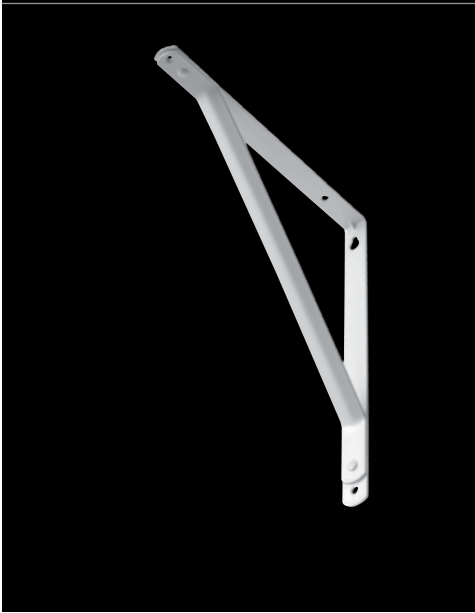
SHELF SUPPORTS



28 PIECES PER MASTER
EACH UNIT INCLUDES TWO #10 x 1 1/2" AND TWO #10 x 3/4" SCREWS

ITEM#	DESCRIPTION	CODES	REFERENCE
M24556	POWDER COAT	USP	MMSBK-WPC

SHELF SUPPORTS



100 PIECES PER MASTER
EACH UNIT INCLUDES FOUR #10 X 1 1/2" SCREWS

ITEM#	DESCRIPTION	CODES	REFERENCE
M27504	MINI 10" x 12"	USP	MMSBK-WPC-NB

DUMMY LEAFS 5/8" RADIUS X 5/8" RADIUS

200 PIECES PER MASTER

ITEM#	DESCRIPTION	CODES	REFERENCE
M18452	ANTIQUE BRASS	US5	MMDL 3.5 5/8 AB
M18453	BRIGHT BRASS	US3	MMDL 3.5 5/8 BB
M18190	DULL BRASS	US4	MMDL 3.5 5/8 DB
M18191	ZINC DICHROMATE	US2D	MMDL 3.5 5/8 ZC
M18450	BRIGHT CHROME	US26	MMDL 3.5 5/8 CM
M25272	COLONIAL BRONZE - DARK	US10BD	MMDL 3.5 5/8 CB
M25161	DULL CHROME	US26D	MMDL 3.5 5/8 DC
M18448	SATIN NICKEL	US15	MMDL 3.5 5/8 SN
M27078	OLD WORLD BRONZE	OWB	MMDL 3.5 5/8 OWB
M27197	FLAT BLACK	US19	MMDL 3.5 5/8 FB

DUMMY LEAFS 1/4" RADIUS X 1/4" RADIUS

200 PIECES PER MASTER

ITEM#	DESCRIPTION	CODES	REFERENCE
M27195	SATIN NICKEL		MMDL 3.5 1/4 SN
M27196	FLAT BLACK		MMDL 3.5 1/4 FB
M27237	OLD WORLD BRONZE		MMDL 3.5 1/4 OWB
M27238	BRIGHT CHROME		MMDL 3.5 1/4 CM

#6 x 3/4" WOOD SCREWS

3,000 PIECES PER INNER AND 18,000 PER MASTER

ITEM#	DESCRIPTION	CODES	REFERENCE
M15487	ZINC DICHROMATE	US2D	MS 63/4 ZCK



#9 x 5/8" FLY CUT WOOD SCREWS

600 PIECES PER INNER AND 12,000 PER MASTER

ITEM#	DESCRIPTION	CODES	REFERENCE
M25277	ANTIQUE BRASS	US5	MS AB 9 5/8 K
M14211	BRIGHT BRASS	US3	MS BB 9 5/8 K
M25279	COLONIAL BRONZE - DARK	US10BD	MS CB 9 5/8 K
M14210	DULL BRASS	US4	MS DB 9 5/8 K
M25278	SATIN NICKEL	US15	MS SN 9 5/8 K
M11645	ZINC DICHROMATE	US2D	MS ZC 9 5/8 K
M26427	BRIGHT CHROME	US26	M S CM 9 5/8 K
M26425	FLAT BLACK	US19	M S FB 9 5/8 K
M26424	WHITE PRIMED	USP	M S WP 9 5/8 K
M26423	DULL CHROME	US26D	M S DC 9 5/8 I
M26426	ANTIQUE NICKEL	US15A	M S AN 9 5/8 K



#9 x 3/4" FLY CUT WOOD SCREWS

600 PIECES PER INNER AND 12,000 PER MASTER



ITEM#	DESCRIPTION	CODES	REFERENCE
M11589	ANTIQUE BRASS	US5	MS AB 9 3/4 K
M14429	ANTIQUE NICKEL	US15A	MS AN 9 3/4 K
M14430	BLACK PRIMED	USID	MS BP 9 3/4 K
M11592	BRIGHT BRASS	US3	MS BB 9 3/4 K
M11596	BRIGHT CHROME	US26	MS CM 9 3/4 K
M26007	BRUSHED ZINC	US2BZ	MS BZ 9 3/4 K
M18228	COLONIAL BRONZE - DARK	US10BD	MS CB 9 3/4 K
M11601	DULL BRASS	US4	MS DB 9 3/4 K
M11606	DULL CHROME	US26D	MS DC 9 3/4 K
M18889	FLAT BLACK	US19	MS FB 9 3/4 K
M11613	OIL RUBBED BRONZE - LIGHT	US10B	MS OB 9 3/4 K
M17237	SATIN NICKEL	US15	MS SN 9 3/4 K
M16834	STAINLESS STEEL	US32D	MS SS 9 3/4 K
M24884	WHITE PRIMED	USP	MS WP 9 3/4 K
M11627	ZINC DICHROMATE	US2D	MS ZC 9 3/4 K
M26007	M S BZ 9 3/4 K	US2BZ	M S BZ 9 3/4 K
M26560	OLD WORLD BRONZE	OWB	M S OWB 9 3/4 K
M27090	POLIAHED NICKEL	US14	M S PN 9 3/4 K

#9 x 1" FLY CUT WOOD SCREWS

400 PIECES PER INNER AND 8,000 PER MASTER



ITEM#	DESCRIPTION	CODES	REFERENCE
M18429	ANTIQUE BRASS	US5	MS AB 9 1 4
M18430	ANTIQUE NICKEL	US15A	MS AN 9 1 4
M11566	BRIGHT BRASS	US3	MS BB 9 1 4
M18431	BRIGHT CHROME	US26	MS CM 9 1 4
M20139	COLONIAL BRONZE - DARK	US10BD	MS CB 9 1 4
M11569	DULL BRASS	US4	MS DB 9 1 4
M18439	DULL CHROME	US26D	MS DC 9 1 4
M18890	FLAT BLACK	US19	MS FB 9 1 4
M18441	SATIN NICKEL	US15	MS SN 9 1 4
M11575	ZINC DICHROMATE	US2D	MS ZC 9 1 4
M26062	BLACK PRIMED	USID	M S BP 9 1 4

#9 x 1 1/4" FLY CUT WOOD SCREWS

400 PIECES PER INNER AND 8,000 PER MASTER

ITEM#	DESCRIPTION	CODES	REFERENCE
M18518	DULL CHROME	US26D	MS DC 9 1-1/4 N
M18516	SATIN NICKEL	US15	MS SN 9 1-1/4 N



#9 x 2 1/4" FLY CUT WOOD SCREWS

100 PIECES PER INNER AND 2,000 PER MASTER
POLY PACKED 2 PIECES PER BAG

ITEM#	DESCRIPTION	CODES	REFERENCE
M16866	ANTIQU BRASS	US5	MS AB 9 2-1/4 N
M16867	ANTIQU NICKEL	US15A	MS AN 9 2-1/4 N
M19464	BLACK PRIMED	US1D	MS BP 9 2-1/4 N
M14545	BRIGHT BRASS	US3	MS BB 9 2-1/4 N
M16868	BRIGHT CHROME	US26	MS CM 9 2-1/4 N
M18233	COLONIAL BRONZE - DARK	US10BD	MS CB 9 2-1/4 N
M16869	DULL CHROME	US26D	MS DC 9 2-1/4 N
M17901	OIL RUBBED BRONZE - LIGHT	US10B	MS OB 9 2-1/4 N
M16870	SATIN NICKEL	US15	MS SN 9 2-1/4 N
M11585	ZINC DICHROMATE	US2D	MS ZC 9 2-1/4 N
M27475	FLAT BLACK	US19	M S FB 9 2-1/4 N



#9 x 2 1/4" FLY CUT WOOD SCREWS

150 PIECES PER INNER AND 3,000 PER MASTER
POLY PACKED 3 PIECES PER BAG

ITEM#	DESCRIPTION	CODES	REFERENCE
M18566	DULL BRASS	US4	MS DB 9 2-1/4 3



#9 x 2 3/4" FLY CUT WOOD SCREWS

100 PIECES PER INNER AND 2,000 PER MASTER
POLY PACKED 2 PIECES PER BAG

ITEM#	DESCRIPTION	CODES	REFERENCE
M18432	ANTIQUE BRASS	US5	M S AB 9 2-3/4 N
M18395	ANTIQUE NICKEL	US15A	M S AN 9 2-3/4 N
M18433	BRIGHT BRASS	US3	M S BB 9 2-3/4 N
M18436	BRIGHT CHROME	US26	M S CM 9 2-3/4 N
M19606	COLONIAL BRONZE - DARK	US10BD	M S CB 9 2-3/4 N
M18434	DULL CHROME	US26D	M S DC 9 2-3/4 N
M18437	OIL RUBBED BRONZE - LIGHT	US10B	M S OB 9 2-3/4 N
M18435	SATIN NICKEL	US15	M S SN 9 2-3/4 N
M18438	ZINC DICHROMATE	US2D	M S ZC 9 2-3/4 N
M26194	WHITE PRIMED	USP	M S WP 9 2-3/4 N
M26452	FLAT BLACK	US19	M S FB 9 2-3/4 N
m26063	M S BP 9 2-3/4 N	US1D	M S BP 9 2-3/4 N

#9 x 3" FLY CUT WOOD SCREWS

100 PIECES PER INNER AND 2,000 PER MASTER
POLY PACKED 2 PIECES PER BAG

ITEM#	DESCRIPTION	CODES	REFERENCE
M27008	COLONIAL BRONZE - DARK	US10BD	M S AB 9 2-3/4 N
M27009	SATIN NICKEL	US15A	M S AN 9 2-3/4 N
M27011	STAINLESS STEEL	US32D	M S AN 9 2-3/4 N

#10 x 1/2" MACHINE SCREWS

400 PIECES PER INNER AND 8,000 PER MASTER
UNDERCUT HEAD TYPE F (5 NOTCH)



ITEM#	DESCRIPTION	CODES	REFERENCE
M16568	ANTIQUE BRASS	US5	M S AB 10 1/2 I
M16569	ANTIQUE NICKEL	US15A	M S AN 10 1/2 I
M11661	BRIGHT BRASS	US3	M S BB 10 1/2 I
M25271	COLONIAL BRONZE - DARK	US10BD	M S CB 10 1/2 I
M11663	DULL BRASS	US4	M S DB 10 1/2 I
M14507	DULL CHROME	US26D	M S DC 10 1/2 I
M18420	SATIN NICKEL	US15	M S SN 10 1/2 I
M24913	WHITE PRIMED	USP	M S WP 10 1/2 I
M14125	ZINC DICHROMATE	US2D	M S ZC 10 1/2 I
M27092	FLAT BLACK	US19	M S FB 10 1/2 I

#10.24 x 5/8" MACHINE SCREWS (FULL TRILOB) #9 HEAD AND #10 BODY

400 PIECES PER INNER AND 8,000 PER MASTER



ITEM#	DESCRIPTION	CODES	REFERENCE
M17918	ANTIQUE BRASS	US5	M S AB 10 5/8 S
M17919	ANTIQUE NICKEL	US15A	M S AN 10 5/8 S
M18935	BLACK PRIMED	US1D	M S BP 10 5/8 S
M17914	BRIGHT BRASS	US3	M S BB 10 5/8 S
M18108	BRIGHT CHROME	US26	M S CM 10 5/8 S
M20039	COLONIAL BRONZE - DARK	US10BD	M S CB 10 5/8 S
M17916	DULL CHROME	US26D	M S DC 10 5/8 S
M18109	SATIN NICKEL	US15	M S SN 10 5/8 S
M17915	ZINC DICHROMATE	US2D	M S ZC 10 5/8 S
M18108	BRIGHT CHROME	US26	M S CM 10 5/8 S
M26451	FLAT BLACK	US19	M S FB 10 5/8 S

#10 x 5/8" FLY CUT WOOD SCREWS

400 PIECES PER INNER AND 8,000 PER MASTER



ITEM#	DESCRIPTION	CODES	REFERENCE
M11697	DULL BRASS	US4	M S DB 10 5/8 I
M18445	DULL CHROME	US26D	M S DC 10 5/8 I
M25997	DULL NICKEL	LUS15	M S DN 10 5/8 I
M25996	FLAT BLACK	US19	M S FB 10 5/8 I
M11699	ZINC DICHROMATE	US2D	M S ZC 10 5/8 I
M26339	BRIGHT CHROME	US26	M S CM 10 5/8 I

#10 x 3/4" FLY CUT WOOD SCREWS

400 PIECES PER INNER AND 8,000 PER MASTER



ITEM#	DESCRIPTION	CODES	REFERENCE
M16566	ANTIQUE BRASS	US5	M S AB 10 3/4 I
M16567	ANTIQUE NICKEL	US15A	M S AN 10 3/4 I
M11686	BRIGHT BRASS	US3	M S BB 10 3/4 I
M18860	BRIGHT CHROME	US26	M S CM 10 3/4 I
M24521	COLONIAL BRONZE - DARK	US10BD	M S CB 10 3/4 I
M11687	DULL BRASS	US4	M S DB 10 3/4 I
M16021	DULL CHROME	US26D	M S DC 10 3/4 I
M18861	SATIN NICKEL	US15	M S SN 10 3/4 I
M24900	WHITE PRIMED	USP	M S WP 10 3/4 I
M11693	ZINC DICHROMATE	US2D	M S ZC 10 3/4 I
M27091	FLAT BLACK	US19	M S FB 10 3/4 I

#10 x 1" FLY CUT WOOD SCREWS

400 PIECES PER INNER AND 8,000 PER MASTER

ITEM#	DESCRIPTION	CODES	REFERENCE
M13518	BRIGHT BRASS	US3	M S BB 10 1 I
M24249	BRIGHT CHROME	US26	M S CM 10 1 I
M19242	COLONIAL BRONZE - DARK	US10BD	M S CB 10 1 I
M11646	DULL BRASS	US4	M S DB 10 1 I
M19243	DULL CHROME	US26D	M S DC 10 1 I
M19241	SATIN NICKEL	US15	M S SN 10 1 I
M24914	WHITE PRIMED	USP	M S WP 10 1 I
M11651	ZINC DICHROMATE	US2D	M S ZC 10 1 I
M26652	FLAT BLACK	US19	M S FB 10 1 I
M26653	ANTIQUE BRASS	US5	M S AB 10 1 I

#10 x 2" FLY CUT WOOD SCREWS

100 PIECES PER INNER AND 2,000 PER MASTER

ITEM#	DESCRIPTION	CODES	REFERENCE
M18421	DULL CHROME	US26D	M S DC 10 2 I
M18501	SATIN NICKEL	US15	M S SN 10 2 I
M24915	WHITE PRIMED	USP	M S WP 10 2 I

#12 X 2-1/2" FLY CUT SCREWS

100 PIECES PER INNER AND 2,000 PER MASTER - 4 EACH PER POLY BAG

ITEM#	DESCRIPTION	CODES	REFERENCE
M27602	BRIGHT BRASS	US3	M S BB 12 2-1/2 4 POLY
M27603	FLAT BLACK	US19	M S FB 12 2-1/2 4 POLY
M27604	DULL BRASS	US4	M S DB 12 2-1/2 4 POLY
M27606	SATIN NICKEL	US15	M S SN 12 2-1/2 4 POLY
M27607	DULL CHROME	US26D	M S DC 12 2-1/2 4 POLY

3.5" x 3.5" PLAIN BEARING SQUARE CORNER ASSEMBLED



PACKED 3 PIECES PER INNER AND 48 PIECES PER MASTER
EACH INNER PACKED WITH 18 #10 x 3/4" WOOD SCREWS
AND 18 EACH #10 x 5/8" MACHINE SCREWS
COMMERCIAL GAUGE 0.123

ITEM#	DESCRIPTION	CODES	REFERENCE
M15955	ANTIQU BRASS	US5	MH3.5PLTPSQ-SQ AB
M14483	BLACK PRIMED	US1D	MH3.5PLTPSQ-SQ BP
M14481	BRIGHT BRASS	US3	MH3.5PLTPSQ-SQ BB
M15940	BRIGHT CHROME	US26	MH3.5PLTPSQ-SQ CM
M18688	COLONIAL BRONZE - DARK	US10BD	MH3.5PLTPSQ-SQ CB
M15728	DULL BRASS	US4	MH3.5PLTPSQ-SQ DB
M14275	DULL CHROME	US26D	MH3.5PLTPSQ-SQ DC
M17428	PRIMED	USP	MH3.5PLTPSQ-SQ PR
M18630	SATIN NICKEL	US15	MH3.5PLTPSQ-SQ SN

4.0" x 4.0" 5/8" RADIUS x 5/8" RADIUS ASSEMBLED BALL BEARING

Special order



PACKED 3 PIECES PER INNER AND 48 PIECES PER MASTER
EACH INNER PACKED WITH 24 #12 X 1" WOOD SCREWS
& 24 #12 X 5/8" MACHINE SCREWS

ITEM#	DESCRIPTION	CODES	REFERENCE
M24471	ANTIQU BRASS	US5	MH4.0BBTP5/8-5/8AB
<input type="checkbox"/> M10811	BRIGHT BRASS	US3	MH4.0BBTP5/8-5/8BB
M18995	COLONIAL BRONZE - DARK	US10BD	MH4.0BBTP5/8-5/8CB
M10815	DULL BRASS	US4	MH4.0BBTP5/8-5/8DB
M14207	DULL CHROME	US26D	MH4.0BBTP5/8-5/8DC
M17800	SATIN NICKEL	US15	MH4.0BBTP5/8-5/8SN

4.0" x 4.0"
1/4" RADIUS x 1/4" RADIUS
ASSEMBLED BALL BEARING

PACKED 3 PIECES PER INNER AND 48 PIECES PER MASTER
 EACH INNER PACKED WITH 24 #12 x 1" WOOD SCREWS
 AND 24 #12 X 1/2" MACHINE SCREWS
 COMMERCIAL GAUGE .130



ITEM#	DESCRIPTION	CODES	REFERENCE
M24905	COLONIAL BRONZE	US10BD	MH4.OBBTP5/8-5/8CBNRP
M26324	DULL CHROME	US26D	MH4.OBBTP5/8-5/8DC NRP

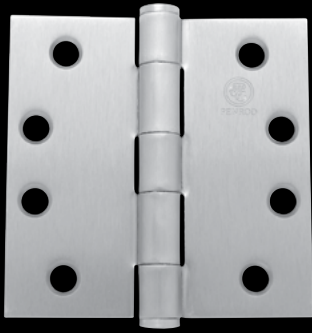
4.0" x 4.0"
1/4" RADIUS x 1/4" RADIUS
ASSEMBLED BALL BEARING

PACKED 3 PIECES PER INNER AND 48 PIECES PER MASTER
 EACH INNER PACKED WITH 24 #12 X 1" WOOD SCREWS
 & 24 #12 X 5/8" MACHINE SCREWS
 COMMERCIAL GAUGE 0.130



ITEM#	DESCRIPTION	CODES	REFERENCE
M19905	COLONIAL BRONZE - DARK	US10BD	MH4.OBBTP1/4-1/4CB
M17876	SATIN NICKEL	US15	MH4.OBBTP1/4-1/4SN
M16257	BRIGHT CHROME	US26	MH4.OBBTP1/4-1/4 CM
M10809	DULL CHROME	US26D	MH4.OBBTP1/4-1/4 DC
M27621	FLAT BLACK	US19	MH4.OBBTP1/4-1/4 FB
M27622	OLD WORLD BRONZE	OWB	MH4.OBBTP1/4-1/4 OWB
M27624	FINE SATIN BRASS	US7	MH4.OBBTP1/4-1/4 STB

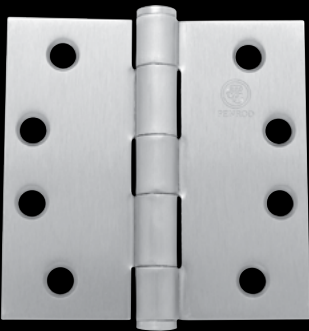
4.0" x 4.0" PLAIN BEARING SQUARE CORNER ASSEMBLED



PACKED 3 PIECES PER INNER AND 48 PIECES PER MASTER
EACH INNER PACKED WITH 24 #12 X 1" WOOD SCREWS
& 24 #12 X 5/8 MACHINE SCREWS
COMMERCIAL GAUGE 0.130

ITEM#	DESCRIPTION	CODES	REFERENCE
M15956	ANTIQU BRASS	US5	MH4.OPLTPSQ-SQ AB
M10933	BRIGHT BRASS	US3	MH4.OPLTPSQ-SQ BB
M10934	BRIGHT CHROME	US26	MH4.OPLTPSQ-SQ CM
M18687	COLONIAL BRONZE - DARK	US10BD	MH4.OPLTPSQ-SQ CB
M25102	DULL BRASS	US4	MH4.OPLTPSQ-SQ DB
M10935	DULL CHROME	US26D	MH4.OPLTPSQ-SQ DC
M10937	PRIMED	USP	MH4.OPLTPSQ-SQ PR
M16680	SATIN NICKEL	US15	MH4.OPLTPSQ-SQ SN
M21102	STAINLESS STEEL	US32D	MH4.OPLTPSQ-SQ SS

4.0" x 4.0" PLAIN BEARING SQUARE CORNER ASSEMBLED NON-REMOVABLE PIN



PACKED 3 PIECES PER INNER AND 48 PIECES PER MASTER
EACH INNER PACKED WITH 24 #12 X 1" WOOD SCREWS
& 24 #12 X 5/8 MACHINE SCREWS
COMMERCIAL GAUGE 0.130

ITEM#	DESCRIPTION	CODES	REFERENCE
M20482	COLONIAL BRONZE - DARK	US10BD	MH4.OPLTPSQ-SQ CBNRP
M25251	SATIN NICKEL	US15	MH4.OPLTPSQ-SQ SNNRP

4.0" x 4.0" PLAIN BEARING SQUARE CORNER SPRING HINGES

Special order

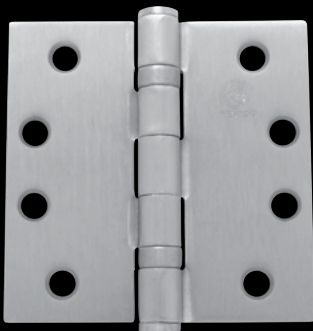


PACKED 3 PIECES PER INNER AND 48 PIECES PER MASTER
EACH INNER PACKED WITH 24 #12 X 1" WOOD SCREWS
& 24 #12 X 5/8" MACHINE SCREWS
COMMERCIAL GAUGE 0.130

ITEM#	DESCRIPTION	CODES	REFERENCE
M18675	BRIGHT CHROME	US26	MH4.0PLTPSQ-SQ CMSPI
M20324	COLONIAL BRONZE - DARK	US10BD	MH4.0PLTPSQ-SQ CBSPI
M18561	DULL CHROME	US26D	MH4.0PLTPSQ-SQ DCSPI
M16818	SATIN NICKEL	US15	MH4.0PLTPSQ-SQ SNSPI
M14484	BRIGHT BRASS	US3	MH4.0PLTPSQ-SQ BBSPI
M27633	ANTIQU BRASS	US5	MH4.0PLTPSQ-SQ ABSPI
M16575	ANTIQU NICKEL	US15A	MH4.0PLTPSQ-SQ ANSPI
M27629	FLAT BLACK	US19	MH4.0PLTPSQ-SQ FBSPI
M27360	OLD WORLD BRONZE	OWB	MH4.0PLTPSQ-SQ OWBSPI
M27631	FINE SATIN BRASS	US7	MH4.0BBTPSQ-SQ STBSPI

4.0" x 4.0" BALL BEARING SQUARE CORNER ASSEMBLED

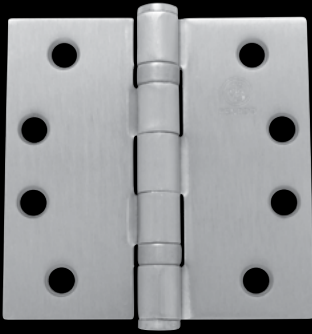
PACKED 3 PIECES PER INNER AND 48 PIECES PER MASTER
EACH INNER PACKED WITH 24 #12 X 1" WOOD SCREWS
& 24 #12 X 5/8" MACHINE SCREWS
COMMERCIAL GAUGE 0.130



ITEM#	DESCRIPTION	CODES	REFERENCE
M14205	BRIGHT CHROME	US26	MH4.0BBTPSQ-SQ CM
M20596	COLONIAL BRONZE - DARK	US10BD	MH4.0BBTPSQ-SQ CB
M16681	SATIN NICKEL	US15	MH4.0BBTPSQ-SQ SN
M27036	FLAT BLACK	US19	MH4.0BBTPSQ-SQ FB
M10817	BRIGHT BRASS	US3	MH4.0BBTPSQ-SQ BB
M15372	ANTIQU BRASS	US5	MH4.0BBTPSQ-SQ AB
M15037	ANTIQU NICKEL	US15A	MH4.0BBTPSQ-SQ AN
M27613	OLD WORLD BRONZE	OWB	MH4.0BBTPSQ-SQ OWB
M10820	DULL CHROME	US26D	MH4.0BBTPSQ-SQ DC
M27615	FINE SATIN BRASS	US7	MH4.0BBTPSQ-SQ STB

4.0" x 4.0" BALL BEARING SQUARE CORNER ASSEMBLED NON-REMOVABLE PIN

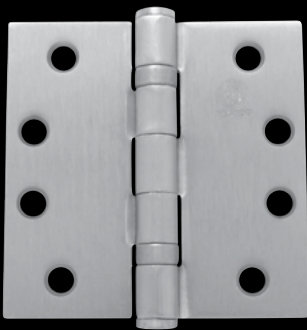
PACKED 3 PIECES PER INNER AND 48 PIECES PER MASTER
EACH INNER PACKED WITH 24 #12 X 1" WOOD SCREWS
& 24 #12 X 5/8" MACHINE SCREWS
COMMERCIAL GAUGE 0.130



ITEM#	DESCRIPTION	CODES	REFERENCE
M20496	ANTIQU BRASS	US5	MH4.0BBTPSQ-SQ ABNRP
M25969	ANTIQU NICKEL	US15A	MH4.0BBTPSQ-SQ ANNRP
M19863	BRIGHT BRASS	US3	MH4.0BBTPSQ-SQ BBNRP
M24851	COLONIAL BRONZE - DARK	US10BD	MH4.0BBTPSQ-SQ CBNRP
M25257	DULL CHROME	US26D	MH4.0BBTPSQ-SQ DCNRP
M24940	SATIN NICKEL	US15	MH4.0BBTPSQ-SQ SNNRP
M25974	SOLID BRASS	US3	MH4.0BBTPSQ-SQ SBNRP
M25975	STAINLESS STEEL	US32D	MH4.0BBTPSQ-SQ SSNRP

4.0" x 4.0" BALL BEARING SQUARE CORNER STAINLESS STEEL BASED ASSEMBLED NON-REMOVABLE PIN

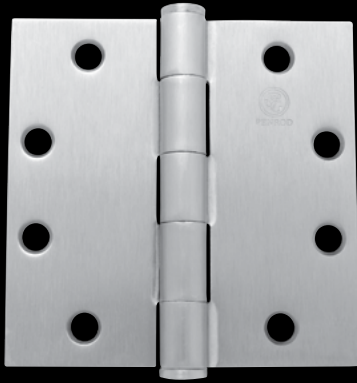
PACKED 3 PIECES PER INNER AND 48 PIECES PER MASTER
EACH INNER PACKED WITH 24 #12 X 1" WOOD SCREWS
& 24 #12 X 5/8" MACHINE SCREWS
COMMERCIAL GAUGE 0.130



ITEM#	DESCRIPTION	CODES	REFERENCE
M25972	ANTIQU BRASS	US5	MH4.0BBTPSQ-SQAB NRP SSE
M25973	ANTIQU NICKEL	US15A	MH4.0BBTPSQ-SQAN NRP SSE
M25970	COLONIAL BRONZE - DARK	US10BD	MH4.0BBTPSQ-SQCB NRP SSE
M25971	SATIN NICKEL	US15	MH4.0BBTPSQ-SQSN NRP SSE

4.5" x 4.5" PLAIN BEARING SQUARE CORNER ASSEMBLED

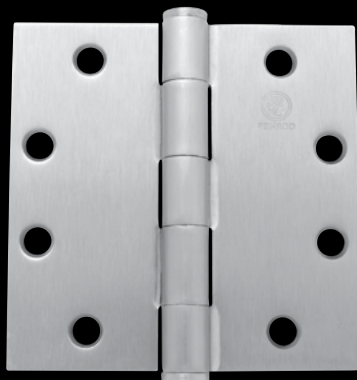
PACKED 3 PIECES PER INNER AND 48 PIECES PER MASTER
EACH INNER PACKED WITH 24 #12 x 1 ¼" WOOD SCREWS
AND 24 #12 x ½" MACHINE SCREWS
COMMERCIAL GAUGE 0.134



ITEM#	DESCRIPTION	CODES	REFERENCE
M14160	ANTIQUÉ BRASS	US5	MH4.5PLTPSQ-SQ AB
M11093	BRIGHT CHROME	US26	MH4.5PLTPSQ-SQ CM
M19030	COLONIAL BRONZE - DARK	US10BD	MH4.5PLTPSQ-SQ CB
M11095	DULL BRASS	US4	MH4.5PLTPSQ-SQ DB
M11098	DULL CHROME	US26D	MH4.5PLTPSQ-SQ DC
M11108	WHITE PRIMED	USP	MH4.5PLTPSQ-SQ WP
M18195	SATIN NICKEL	US15	MH4.5PLTPSQ-SQ SN
M15002	ANTIQUÉ NICKEL	US5	MH4.5PLTPSQ-SQ AN

4.5" x 4.5" PLAIN BEARING SQUARE CORNER ASSEMBLED NON-REMOVABLE PIN

PACKED 3 PIECES PER INNER AND 48 PIECES PER MASTER
EACH INNER PACKED WITH 24 #12 x 1 ¼" WOOD SCREWS
AND 24 #12 x ½" MACHINE SCREWS
COMMERCIAL GAUGE 0.134



ITEM#	DESCRIPTION	CODES	REFERENCE
M11099	DULL CHROME	US26D	MH4.5PLTPSQ-SQ DCNRP
M11109	PRIMED	USP	MH4.5PLTPSQ-SQ PRNRP

4.5" x 4.5" BALL BEARING 5/8" RADIUS x 5/8" RADIUS ASSEMBLED

PACKED 3 PIECES PER INNER AND 48 PIECES PER MASTER
EACH INNER PACKED WITH 24 #12 X 3/4" FLY CUT SCREWS
AND 24 #12 X 5/8" MACHINE SCREWS
COMMERCIAL GAUGE 0.134



ITEM#	DESCRIPTION	CODES	REFERENCE
M21101	SATIN NICKEL	US15	MH4.5BBTP5/8-5/8SN
M24360	COLONIAL BRONZE	US10BD	MH4.5BBTP5/8-5/8CB
M24400	DULL CHROME	US26D	MH4.5BBTP5/8-5/8DC
M26825	BLACK PRIMED	US1D	MH4.5BBTP5/8-5/8BP
M27596	FINE SATIN BRASS	US7	MH4.0BBTP5/8-5/8STB

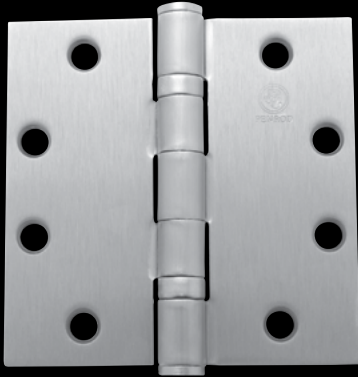
4.5" x 4.5" BALL BEARING 5/8" RADIUS x 5/8" RADIUS ASSEMBLED

PACKED 3 PIECES PER INNER AND 48 PIECES PER MASTER
EACH INNER PACKED WITH 24 #12 X 3/4" FLY CUT SCREWS
AND 24 #12 X 5/8" MACHINE SCREWS
COMMERCIAL GAUGE 0.134



ITEM#	DESCRIPTION	CODES	REFERENCE
M24848	COLONIAL BRONZE	US10BD	MH4.5BBTP5/8-5/8CBNRP
M26826	BLACK PRIMED	US1D	MH4.5BBTP5/8-5/8BP NRP
M27598	SATIN NICKEL	US15	MH4.5BBTP5/8-5/8SNRP
M27597	FINE SATIN BRASS	US7	MH4.0BBTP5/8-5/8STBNRP

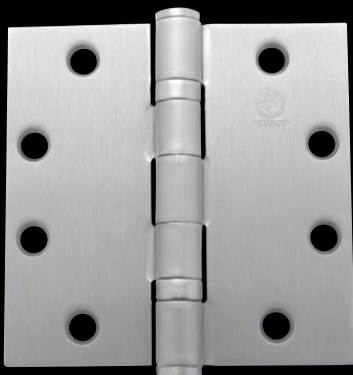
4.5" x 4.5" BALL BEARING SQUARE CORNER ASSEMBLED



PACKED 3 PIECES PER INNER AND 48 PIECES PER MASTER
EACH INNER PACKED WITH 24 #12 x 3/4" FLY CUT SCREWS
AND 24 #12 x 5/8" MACHINE SCREWS
COMMERCIAL GAUGE 0.134

ITEM#	DESCRIPTION	CODES	REFERENCE
M14963	ANTIQU BRASS	US5	MH4.5BBTPSQ-SQ AB
M11070	BRIGHT BRASS	US3	MH4.5BBTPSQ-SQ BB
M11073	BRIGHT CHROME	US26	MH4.5BBTPSQ-SQ CM
M19519	COLONIAL BRONZE - DARK	US10BD	MH4.5BBTPSQ-SQ CB
M11074	DULL BRASS	US4	MH4.5BBTPSQ-SQ DB
M11076	DULL CHROME	US26D	MH4.5BBTPSQ-SQ DC
M24864	FLAT BLACK	US19	MH4.5BBTPSQ-SQ FB
M11080	PRIMED	USP	MH4.5BBTPSQ-SQ PR
M17483	SATIN NICKEL	US15	MH4.5BBTPSQ-SQ SN
M11083	STAINLESS STEEL	US32D	MH4.5BBTPSQ-SQ SS

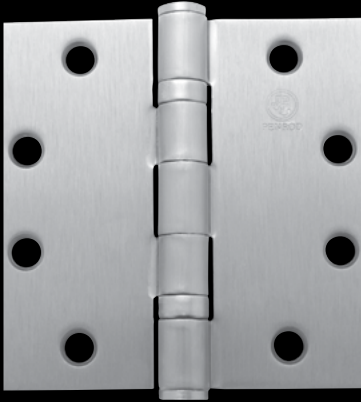
4.5" x 4.5" BALL BEARING SQUARE CORNER ASSEMBLED NON-REMOVABLE PIN



PACKED 3 PIECES PER INNER AND 48 PIECES PER MASTER
EACH INNER PACKED WITH 24 #12 x 3/4" FLY CUT SCREWS
AND 24 #12 x 5/8" MACHINE SCREWS
COMMERCIAL GAUGE 0.134

ITEM#	DESCRIPTION	CODES	REFERENCE
M11071	BRIGHT BRASS	US3	MH4.5BBTPSQ-SQ BBNRP
M20340	COLONIAL BRONZE - DARK	US10BD	MH4.5BBTPSQ-SQ CBNRP
M11077	DULL CHROME	US26D	MH4.5BBTPSQ-SQ DCNRP
M11081	WHITE PRIMED	USP	MH4.5BBTPSQ-SQ WPNRP
M19445	SATIN NICKEL	US15	MH4.5BBTPSQ-SQ SNNRP
M15742	STAINLESS STEEL	US32D	MH4.5BBTPSQ-SQ SSRIV
M26325	BRIGHT CHROME	US26	MH4.5BBTPSQ-SQ CM NRP
M26664	FLAT BLACK	US19	MH4.5BBTPSQ-SQFB NRP

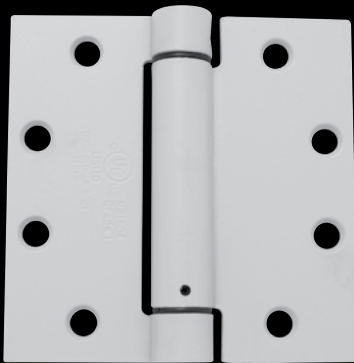
4.5" x 4.5" BALL BEARING SQUARE CORNER STAINLESS STEEL BASED ASSEMBLED NON-REMOVABLE PIN



PACKED 3 PIECES PER INNER AND 48 PIECES PER MASTER
EACH INNER PACKED WITH 24 #12 x 1" FLY CUT SCREWS
AND 24 #10 x 5/8" MACHINE SCREWS
COMMERCIAL GAUGE 0.134

ITEM#	DESCRIPTION	CODES	REFERENCE
M26476	COLONIAL BRONZE	US10BD	MH4.5BBTPSQ-SQCBNRP SSE
M26477	SATIN NICKEL	US15	MH4.5BBTPSQ-SQSNRP SSE
M27641	FLAT BLACK	US19	MH4.5BBTPSQ-SQFBNRP SSE

4.5" x 4.5" SQUARE CORNER SPRING HINGES

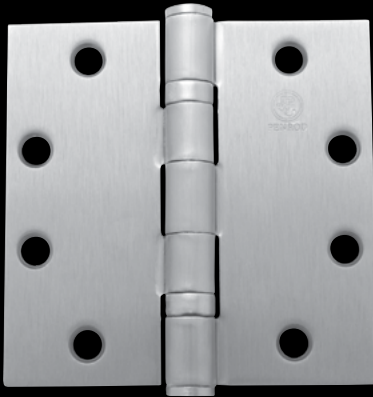


PACKED 3 PIECES PER INNER AND 48 PIECES PER MASTER
EACH INNER PACKED WITH 24 #12 x 1 1/4" FLY CUT SCREWS
AND 24 #12 x 5/16" MACHINE SCREWS
COMMERCIAL GAUGE 0.134

ITEM#	DESCRIPTION	CODES	REFERENCE
M11089	BRIGHT BRASS	US3	MH4.5PLTPSQ-SQ BBSPI
M25264	BRIGHT CHROME	US26	MH4.5PLTPSQ-SQ CMSPI
M24865	COLONIAL BRONZE - DARK	US10BD	MH4.5PLTPSQ-SQ CBSPI
M11096	DULL BRASS	US4	MH4.5PLTPSQ-SQ DBSPI
M11100	DULL CHROME	US26D	MH4.5PLTPSQ-SQ DCSPi
M11110	PRIMED	USP	MH4.5PLTPSQ-SQ PRSPI
M25263	SATIN NICKEL	US15	MH4.5PLTPSQ-SQ SNSPI
M26355	BRIGHT CHROME	US26	MH4.5PLTPSQ-SQ CMSPI

5" x 5" BALL BEARING SQUARE CORNER STAINLESS STEEL BASED ASSEMBLED NON-REMOVABLE PIN

PACKED 3 PIECES PER INNER AND 48 PIECES PER MASTER
EACH INNER PACKED WITH 24 #12 x 1" FLY CUT SCREWS
AND 24 #10 x 5/8" MACHINE SCREWS
COMMERCIAL GAUGE 0.145



ITEM#	DESCRIPTION	CODES	REFERENCE
M26478	COLONIAL BRONZE	US10BD	MH5.0BBTPSQ-SQCBNRP SSE
M26479	SATIN NICKEL	US15	MH5.0BBTPSQ-SQSNRP SSE
M26479	FLAT BLACK	US19	MH5.0BBTPSQ-SQFBNRP SSE

35 POUND FLOOR MOUNTED SPRING PIVOTS

PACKED 1 PIECE PER INNER AND 8 PIECES PER MASTER
WITH SCREWS AND SIDE PLATES

Special order





ITEM#	DESCRIPTION	CODES	REFERENCE
<input type="checkbox"/> M20354	COLONIAL BRONZE - DARK	US10BD	MMSP-CB-35 FLOOR
<input type="checkbox"/> M11506	DULL BRASS	US4	MMSP-DB-35 FLOOR
<input type="checkbox"/> M14475	DULL CHROME	US26D	MMSP-DC-35 FLOOR
<input type="checkbox"/> M17215	SATIN NICKEL	US15	MMSP-SN-35 FLOOR

120 POUND FLOOR MOUNTED SPRING PIVOTS

PACKED 1 PIECE PER INNER AND 8 PIECES PER MASTER
WITH SCREWS AND SIDE PLATES

 Special order



ITEM#	DESCRIPTION	CODES	REFERENCE
 M11498	BRIGHT BRASS	US3	MMSP-BB-120 FLOOR
 M19667	COLONIAL BRONZE - DARK	US10BD	MMSP-CB-120 FLOOR
 M11504	DULL BRASS	US4	MMSP-DB-120 FLOOR
 M16829	SATIN NICKEL	US15	MMSP-SN-120 FLOOR

5" DOUBLE ACTING SPRING HINGES

PACKED 2 PIECES PER INNER AND 16 PIECES PER MASTER WITH SCREWS

 Special order



ITEM#	DESCRIPTION	CODES	REFERENCE
 M21047	COLONIAL BRONZE - DARK	US10BD	MMDBL-CB-5
 M19233	SATIN NICKEL	US15	MMDBL-SN-5

6" DOUBLE ACTING SPRING HINGES

Special order

PACKED 2 PIECES PER INNER AND 12 PIECES PER MASTER WITH SCREWS



ITEM#	DESCRIPTION	CODES	REFERENCE
M19947	COLONIAL BRONZE - DARK	US10BD	MMDBL-CB-6
M17640	SATIN NICKEL	US15	MMDBL-SN-6

CENTRALIA, IL
866.755.7636

MOBERLY, MO
800.892.5850

MT. PLEASANT, IA
800.258.5809

SPRING HILL, KS
800.490.4320

Proudly
Supplied
By

