

GET OUTSIDE THE EVERYDAY



Get Outside the Everyday

Everyday living doesn't have to mean having an everyday life. MoistureShield is the only high-performance composite decking engineered to deliver 360-degree protection, 365 days a year. So you can enjoy the outdoors to the fullest, no matter where you call home.



Excel Every Day. Product innovations that improve your everyday

life, offering enduring beauty that reduces the need for routine maintenance.

Defy Ordinary. Built to outlast the elements, our wood composite

deck boards can be installed on the ground, in the ground or underwater.

Inspire Life. Create inspired outdoor living spaces, from the social spot

to the play area, with gorgeous finishes and unmatched performance.

zerO Failures



We're the only decking product with zero structural field failures for more than 30 years. Visit our website to learn more about why that matters and how we stack up against the competition. [MoistureShield.com/Why-MoistureShield](https://www.moistureshield.com/Why-MoistureShield)

Sustainability Matters

MoistureShield is committed to working towards a cleaner, waste-free world.

That's why we build our composite decking boards with **95% recycled content**, much of it material that we help divert from landfills. 100% of the wood we use is recycled, so no trees are cut down to make our product. That's more than 65 million pounds of wood fiber we recycle every year, or the equivalent of more than 15,000 trees. 25% of the plastic we use comes from post-consumer waste — like plastic bags and bottles — so they become part of beautiful decks rather than landfills or pollution.

Because we believe in being part of the sustainability solution, we choose to reuse materials to make new, better things.



Build Green with MoistureShield

Our decking contributes to LEED green building certifications with over 95% recycled material.



● Pre-consumer recycled content

● Post-consumer recycled content



The average American uses **110 pounds** of single-use plastic every year.



We take the waste of about **250,000 Americans** and use it to create our high-performance decking.

THAT'S 125 MILLION POUNDS of wood fiber, plastic regrind, rigid plastics and film plastics we divert from landfills every year.
(More than two Statues of Liberty!)

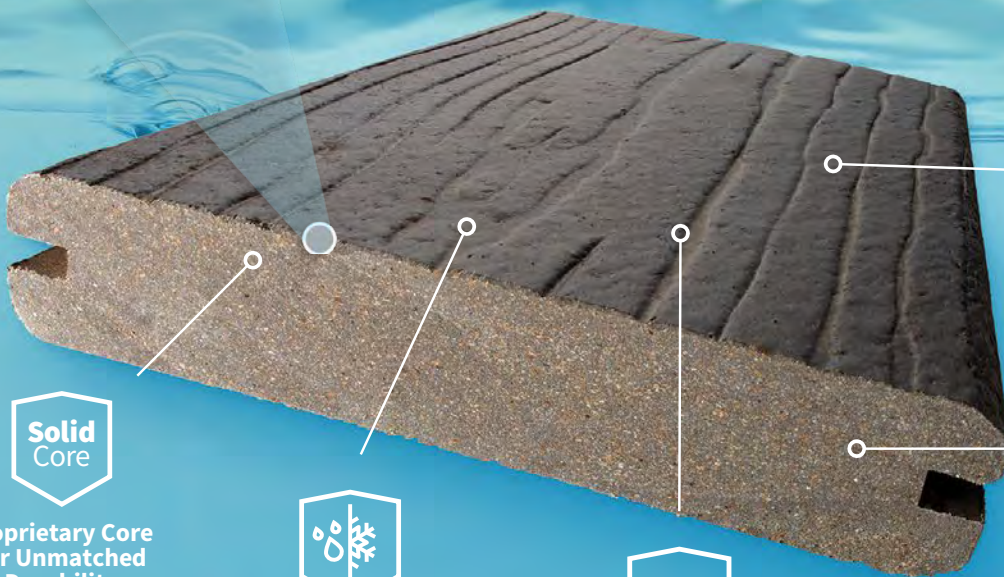
The Solid Core Difference™

MoistureShield offers the only wood composite boards in the industry that can be installed on the ground, in the ground or underwater without any structural performance issues. At the foundation of every board is our proprietary Solid Core — an impermeable barrier that fights damage from moisture, rot, insects and other harmful elements. Our core maintains its integrity even after ripping and cutting, mitigating warranty issues and long-term damage.

Choose Solid Core and create outdoor spaces that stand up to the effects of weather and wear — day in and day out.



Wood fibers are individually encapsulated in plastic



Proprietary Core for Unmatched Durability



No Warping or Rotting



Zero Structural Field Failures in 30+ Years



Virtually No Moisture Absorption



Resists Damage from Insects

Excel Through Innovation

Our technology sets MoistureShield decking above the rest.

It started with the Solid Core Difference™, and today we continue to design our boards to defy the elements and inspire better living for years to come. That's why we've introduced industry-leading innovations like our CoolDeck Technology, keeping our boards cooler in hot environments, developing boards that are more authentic and beautiful, and creating the strongest composite cap on the market. We've kept our focus on innovation for more than 30 years.



Vision Mochaccino
Contractor: Deck Master Company

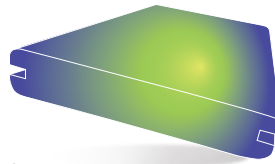
Comfort.



CoolDeck® Technology

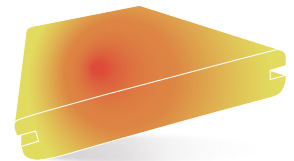
Finally, composite decking that stays comfortable all season long, when every degree counts. On a hot summer day, a deck can reach temperatures of more than 160°F. That's why we designed the only composite wood decking that helps reduce heat up to 35%*, staying cooler in extreme heat.

MoistureShield with
CoolDeck Technology



VS

Standard Capped
Composite Decking



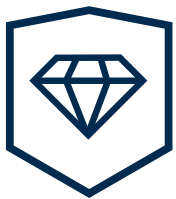
Up to

35% Less Heat

160°F+

* Reduces heat absorption by up to 35% compared to standard capped composites in a similar color. CoolDeck Technology is available in select colors in the Vision and Meridian lines.

Durability.



DiamondDefense™ Coating

You choose composite decking to avoid maintenance like painting and staining, so why settle for products that scratch or chip on impact? Our DiamondDefense Coating creates the strongest capped wood composite board on the market to protect your deck against everyday damage to stay looking like new for longer.

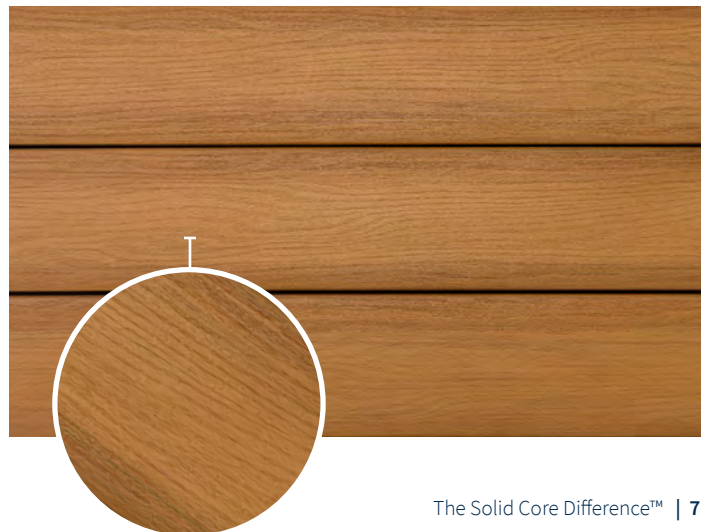


Beauty.



TruTexture™ Surface

Our proprietary TruTexture coating utilizes advanced techniques to deliver lower pattern repetition, rich color variegation and a realistic wood grain texture in each composite decking board. And with added scratch resistance, you'll spend less time on maintenance and more time enjoying your backyard sanctuary.





Excel Every Day



Decking

Our offering provides beautiful options for every project. Create bold and inspired outdoor living spaces that stand up to the effects of weather and wear. All of our products are protected with the Solid Core Difference for unbeatable performance in virtually any environment — from above the ground to underwater — so you can rest assured knowing your investment will last a lifetime.

Vision®

pg. 12-13



Meridian™

pg. 14-15



Elevate™

pg. 16-17



Vantage™

pg. 18-19



Marine Grade 2x

pg. 20-23



Deck Style Meets Lifestyle

The quick product selection guide on this page will help you understand our products at a glance to solve for your needs. For example, families in hot climates and with young children will want to choose products with our CoolDeck Technology. If you have a rustic, wood-heavy interior design or you live in a forested environment, our Meridian decking will pair beautifully. Heavily-trafficked decks should be made with our Vision decking.

Consider the following questions before choosing the right decking:

- Do you have young children or pets?
Choose Vision or Vantage for high slip resistance.
- Does your region experience many hot summer days?
Choose Vision or Meridian with CoolDeck.
- What kind of style do you have in your home?
For a rustic look and feel, choose Meridian.
For modern, refined colors, choose Vision.
- How often do you entertain large groups?
For heavy foot traffic, choose Vision.
- Are you designing a home dock or pier?
For the highest durability, choose Vision Marine Grade 2x.
For an authentic wood look, choose Vantage Marine Grade 2x.
- Are you interested in decking that will last for many years and is low maintenance, but are also concerned about staying within your budget?
Choose Elevate. Its scalloped bottom reduces cost while still offering our Solid Core protection giving it the same 50-Year Structural warranty that is available on all MoistureShield's decking lines.



Vision with CoolDeck Technology

Extremely durable decking built for bare feet, pet claws, summer heat and sports cleats

Vision Marine Grade 2x with CoolDeck Technology

Marine grade boards with CoolDeck, premium durability and our highest slip resistance





Meridian with CoolDeck Technology

Authentic premium wood look with colors built to keep even the hottest weather at bay



Vantage

Specialty decking that imitates real wood but resists damage from water and harmful elements

Elevate

Affordable and high-performing composite decking with a strong, protective barrier

Vantage Marine Grade 2x

Marine grade boards that retain the look of real wood with our water-resistant Solid Core



Vision

Bold. Refined. Infinite.

It's time to step up to the future of composite decking. Our strongest capped wood composite board is protected with our exclusive DiamondDefense Coating to exude distinctive style while resisting scratches, stains and damage on impact. Choose from beautiful color options and textures that reflect the look of real hardwood while ensuring unmatched performance features designed to last a lifetime.

- **Made with 95% recycled material**
- **Transferable 50-Year Structural Warranty**
- **50-Year Fade and Stain Warranty**
- **Approved for use in California Wildland Urban Interface (WUI) zones**
- WUI Listing No. 8110-2321:0500
- **Deck boards approved for use as cladding**

* Reduces heat absorption by up to 35% compared to standard capped composites in a similar color.
For color availability in your region, please contact your MoistureShield representative.



**Proprietary
Solid Core**



**Zero Structural Field
Failures in 30+ Years**



**DiamondDefense™
Coating**



**CoolDeck®
Technology
Reduces Heat
up to 35% ***



**Approved for use
in CA WUI Zones**



**Slip
Resistance**





1" Grooved Edge Deck Board

Dimensions 1" x 6" **
Lengths 12', 16', 20'



1" Solid Edge Deck Board

Dimensions 1" x 6" **
Lengths 12', 16', 20'
See page 22 for Marine Grade 2" x 6"



Fascia Board

Dimensions 0.67" x 11.25"
Lengths 12'

**For actual board dimensions, see chart on page 39.

Available colors

COOLDECK
TECHNOLOGY

 Cathedral Stone with CoolDeck Technology	
 Cold Brew with CoolDeck Technology	
 Mochaccino with CoolDeck Technology	

	Smokey Gray
	Spanish Leather
	Sandstone



Vision

Meridian

Natural. Lasting. True.

Create the perfect escape — get a natural look without all of the upkeep. Our resilient, color-enriched Meridian deck boards feature TruTexture Surface. This capped composite decking with a low-profile wood grain pattern and reduced pattern repetition evokes the look and feel of real wood and is combined with all the protection and performance of the Solid Core Difference. Experience the beauty of a sanctuary that can be enjoyed for a lifetime.

- **Made with 95% recycled material**
- **Transferable 50-Year Structural Warranty**
- **40-Year Fade and Stain Warranty**
- **Approved for use in California Wildland Urban Interface (WUI) zones**
- WUI Listing No. 8110-2321:0501
- **Deck boards approved for use as cladding**

* Reduces heat absorption by up to 35% compared to standard capped composites in a similar color. For color availability in your region, please contact your MoistureShield representative.



**Proprietary
Solid Core**



**Zero Structural Field
Failures in 30+ Years**



**TruTexture™
Surface**



**CoolDeck®
Technology
Reduces Heat
up to 35% ***



**Approved for use
in CA WUI Zones**



Available colors



1" Grooved Edge Deck Board
Dimensions 1" x 6"***
Lengths 12', 16', 20'



1" Solid Edge Deck Board
Dimensions 1" x 6"***
Lengths 12', 16', 20'



Fascia Board
Dimensions 0.67" x 11.25"
Lengths 12'

***For actual board dimensions, see chart on page 39.

COOLDECK
TECHNOLOGY



Citadel
with CoolDeck Technology



Catalina
with CoolDeck Technology



Shoreside
with CoolDeck Technology



Mariner



Meridian

Elevate

Strong. Dynamic. Fundamental.

Get advanced protection and beauty without breaking your budget. Our introductory capped wood composite board is shielded with a strong, protective barrier to help prevent damage from impact, corrosion and weathering in virtually any environment. Additional defense lies in our proprietary Solid Core for zero structural field failures on the ground, in the ground or underwater. Available in a curated selection of classic and premium color options, Elevate composite decking allows you to create a stylish, durable outdoor environment simply and affordably.

- Available in premium colors with variegation for added texture and depth
- Made with 95% recycled material
- 50-Year Structural Warranty
- 30-Year Fade and Stain Warranty

For color availability in your region, please contact your MoistureShield representative.



Proprietary
Solid Core



Zero Structural Field
Failures in 30+ Years



Slip
Resistance



Great Value





1" Grooved Edge Deck Board
 Dimensions 1" x 6"***
 Lengths 12', 16', 20'



1" Solid Edge Deck Board
 Dimensions 1" x 6"***
 Lengths 20'



Fascia Board
 Dimensions 0.67" x 11.25"
 Lengths 12'

**For actual board dimensions, see chart on page 39.

Available colors



Lake Fog



Canoe



Alpine Gray



Riverbank



Elevate

Vantage

Versatile. Durable. Dependable.

Decking gets an upgrade with a wood composite board that works better than pressure treated lumber. When it comes to creating custom artisan decks, there's no material that cuts, rips or bends better while still maintaining its integrity. That's because our Solid Core runs through the entire board to ensure protection without a cap. As a result, there's no need for painting, staining and annual repairs with this beautiful decking option that's resistant to moisture, rot and warping.

And as our most realistic composite wood decking, the high wood fiber content and uncapped construction of Vantage decking means it will weather and lighten in color just like authentic wood. See the weathered swatches on the next page to ensure you'll love the end result.

- **Made with 95% recycled material**
- **Matte finish**
- **Transferable 50-Year Structural Warranty**

For color availability in your region, please contact your MoistureShield representative.



**Proprietary
Solid Core**



**Zero Structural Field
Failures in 30+ Years**



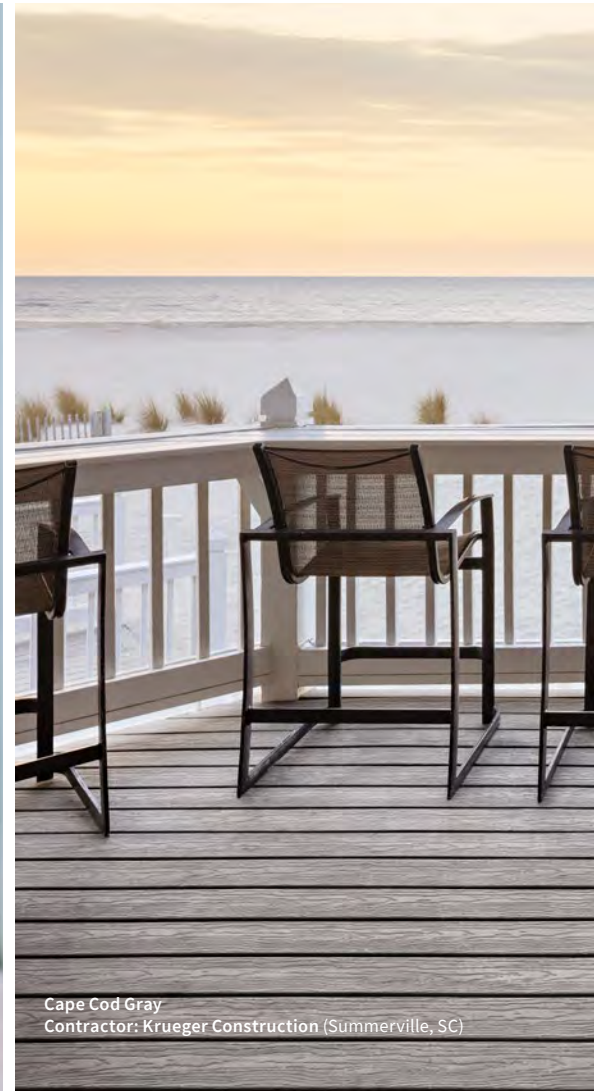
**Works Like
Real Wood**



**Self-Healing Boards
Minimize Appearance
of Scuffs and Scratches**



**Reversible
Boards**





1" Grooved Edge Deck Board

Dimensions 1" x 6"***
Lengths 12', 16', 20'



1" Solid Edge Deck Board

Dimensions 1" x 6"***
Lengths 12', 16', 20'
See page 23 for
Marine Grade 2"x6" & 2" x 8"

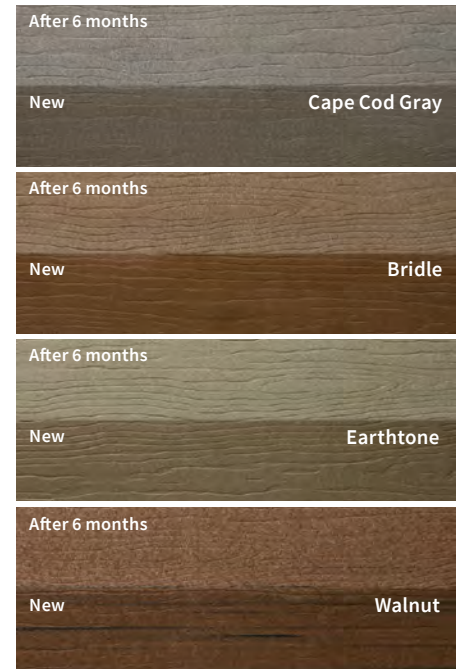


Fascia Board

Dimensions 0.67" x 11.25"
Lengths 12'

**For actual board dimensions, see chart on page 39.

Available colors†



† Vantage boards will naturally lighten to their permanent color within the first six months. Reference these swatches to ensure you'll love the end result.



Vantage

Marine Grade 2x

For Life on the Water.

Thicker 2x construction for docks, piers, marinas and more.

MoistureShield is the only wood composite decking on the market with virtually no moisture absorption, inside or out. Thanks to the Solid Core Difference, our products can be installed on the water or underwater without damage from warping or swelling, even after cutting. Get all the incredible advantages of our Vision and Vantage boards in a thicker 2x construction for all marine grade applications.



Proprietary
Solid Core



Zero Structural Field
Failures in 30+ Years



Marine Grade
Spans 24"





Marine Grade

Vision Marine Grade 2x

- CoolDeck Technology to reduce heat*
- Resists fading and swelling
- Incredibly durable
- 50-Year Structural Warranty
- 50-Year Fade and Stain Warranty
- Rated for 24" joist span



Marine Grade
Spans 24"



Slip
Resistance



DiamondDefense™
Coating



CoolDeck®
Technology
Reduces Heat
up to 35%*



2" Solid Edge Deck Board
Dimensions 2" x 6" **
Lengths 12', 16', 20'



Fascia Board
Dimensions 0.67" x 11.25"
Lengths 12'

* Reduces heat absorption by up to 35% compared to standard capped composites in a similar color.

**For actual board dimensions, see chart on page 39.

Available colors

COOLDECK
TECHNOLOGY

 <p>Cathedral Stone <small>with CoolDeck Technology</small></p>	 <p>Smokey Gray</p>
 <p>Cold Brew <small>with CoolDeck Technology</small></p>	 <p>Spanish Leather</p>
 <p>Mochaccino <small>with CoolDeck Technology</small></p>	 <p>Sandstone</p>



Photocredit: Wade Works

Vantage Marine Grade 2x

- No staining or sealing required
- Works like real wood
- 50-Year Structural Warranty
- Rated for 24" joist span



**Marine Grade
Spans 24"**



**Self-Healing Boards
Minimize Appearance
of Scuffs and Scratches**

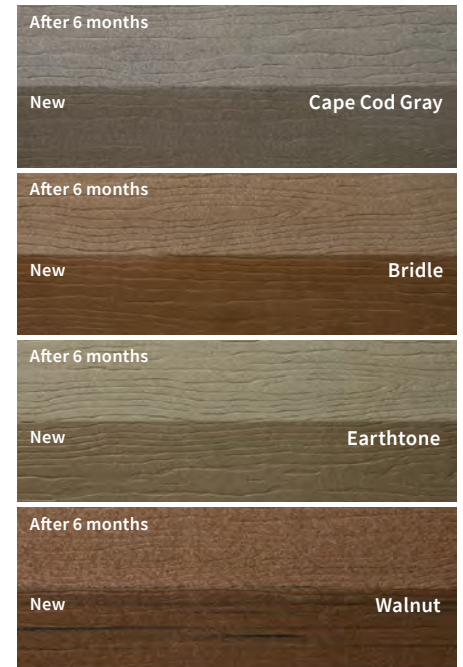


**Reversible
Boards**



**Works like
Real wood**

Available colors[‡]



2" Solid Edge Deck Board

2" x 4" — available in 12' & 16'
2" x 6" — available in 12', 16' & 20'
2" x 8" — available in 8', 12', 16' & 20' *



Fascia Board

Dimensions 0.67" x 11.25"
Lengths 12'

* 2" x 8" available in Cape Cod Gray only

** For actual board dimensions, see chart on page 39.

[‡] Vantage boards will naturally lighten to their permanent color within the first six months. Reference these swatches to ensure you'll love the end result.





Vision



Vision
Marine Grade 2x

Solid Core with Zero Structural Field Failures in 30+ Years



Surface

DiamondDefense

DiamondDefense

CoolDeck Technology*



Reversible Board

–

–

Workability of Real Wood

–

–

Self-Healing

–

–

Grooved Edge or Solid

Both

Solid

95% Recycled Content



Fade and Stain Warranty

50-Year

50-Year

50-Year Structural Warranty



Price Range

\$\$\$\$

\$\$\$\$

Spans Up To

16"

24"

*CoolDeck Technology is available in select colors in the Vision and Meridian lines.



Meridian



Elevate



Vantage



Vantage
Marine Grade 2x



TruTexture

Traditional Cap

Uncapped

Uncapped



-

-

-

-

-



-

-



-

-



Both

Both

Both

Solid



40-Year

30-Year

-

-



\$\$\$

\$

\$\$

\$\$

16"

16"

16"

24"



Defy Ordinary



Railing

Complete your dream deck with a picture-perfect railing. Choose from a composite or aluminum deck railing system, each featuring durable construction and decorative details, to surround your MoistureShield deck with worry-free safety and enduring style.

Compass™ Aluminum Railing

pg. 28

Navigator™ Composite Railing

pg. 29

Discovery™ Composite Railing

pg. 30

Traverse™ Composite Railing

pg. 31

Accessories

Just like our decking products, all MoistureShield accessories — from our hidden fasteners to our deck lights — are built to be beautiful and tough, with uncompromising attention to detail. Complement your outdoor living space with products to match any style.

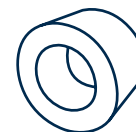
Lighting

pg. 32



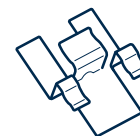
Joist Tape

pg. 33



Hidden Fasteners





pg. 34-35



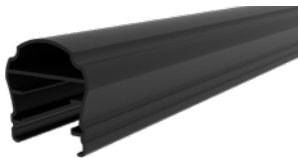
Our Compass aluminum deck railing system adds a contemporary edge to any deck design with rustproof construction and modern lines for any outdoor setting. Featuring ProLock® strips and a powder coating rated three times the industry standard, Compass Series aluminum railing offers secure connections and durability for sophisticated strength.

- Available in 36" and 42" heights
- Strong and durable — will not rust
- Pre-assembled panels are true to length
- Top and bottom rail end caps conceal cuts for a clean and polished look
- ProLock strips create a secure screwless connection to ¾" baluster
- Powder coat rated at more than 3 times industry standard
- Code compliant for safety and security
- Transferable Limited Lifetime Warranty



 3X Powder Coat Rated at 3X Industry Standard	 Limited Lifetime Warranty	 Cable Infill Available	 2-to-3 Rail Adapter Available	 Deck Board Adapter Available
---	--	---	--	---

Top Rail Options



Cambridge
6' and 8' Level | 6' Stair

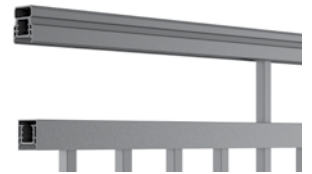


Classic
6' and 8' Level | 6' Stair

Adapter Options



Deck Board Adapter



2-to-3 Rail Adapter

Infill Options



¾" Square Balusters
Sold in pre-assembled sections.

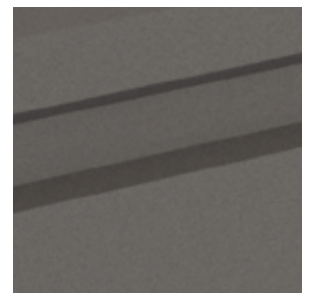


Cable Infill
Sold as a Beam Kit: Includes top beam, bottom beam cover and brackets.

Color Options



Matte Black



Matte Bronze

Navigator

Solid Core Composite Railing

Our premium Navigator composite railing offers customization with multiple top rail options and infill styles, including traditional square balusters, black round aluminum balusters and a cable infill option. And with an elegant acrylic satin white finish, you get the look and feel of a real wood railing.

- Solid Core composite with acrylic cap stock for superior durability with satin finish that looks and feels like real wood
- Will not rot, splinter, warp or stain
- Panels are true to length
- No squeaks or rattles
- Concealed brackets offer a clean and polished look
- Single bracket and seamless baluster attachment for easy installation
- Code compliant for safety and security
- Transferable Limited Lifetime Warranty
- Made in the USA



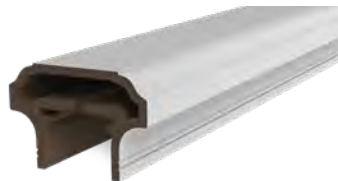
SOLID CORE RAILING

Will Not Rot, Splinter, Warp or Stain

Limited Lifetime Warranty

Cable Infill Available

Top Rail Options



Capital
 6' and 8' Level | 6' Stair



Contempo
 6' and 8' Level | 6' Stair



Graspable Stair
 6' Stair

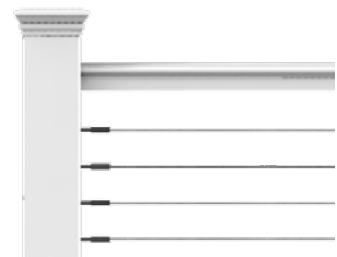
Infill Options (available in 36" and 42" heights)



1 1/8" Square
 Sold as Beam Kit: Includes top beam, bottom beam and cover; infill; and brackets. Top rail cover sold separately.



3/4" Round Aluminum
 Sold as Beam Kit: Includes top beam, bottom beam and cover; and brackets. Top rail cover and infill sold separately.



Cable
 Sold as Beam Kit: Includes top beam, bottom beam and cover; and brackets. Top rail cover and infill sold separately.

Discovery

Solid Core Composite Railing

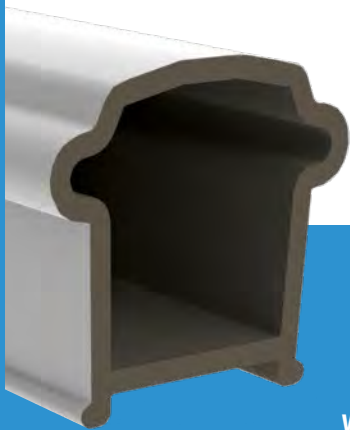
SOLID CORE™
RAILING
by MoistureShield®

Our Discovery composite railing offers a traditional breadloaf profile with a smooth glossy finish. Add the optional deck board adapter to create a flat cocktail rail for added style and convenience. Featuring concealed fasteners, two infill style options and offered as a complete kit that includes top and bottom rails, infill and brackets.

- Level Rail Kit: 36" height available in 6', 8' and 10' widths; 42" height available in 6' and 8' widths
- Stair Rail Kit: 36" height available in 6' and 8' widths; 42" height available in 6' and 8' widths
- Optional deck board adapter available in all colors (2 adapters per box)
- Solid Core composite with PVC cap stock provides durability with the look of real wood
- Will not rot, splinter, warp or stain
- No squeaks or rattles
- Concealed fasteners offer a clean and polished look
- Code compliant for safety and security



Scan to Learn More



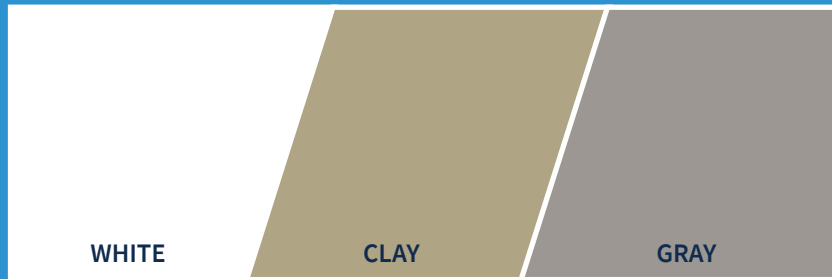
Breadloaf Profile



Will Not Rot,
Splinter, Warp
or Stain



Lifetime
Warranty



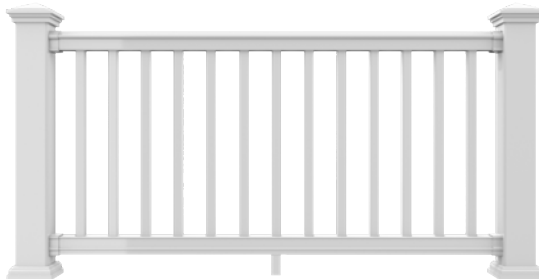
WHITE

CLAY

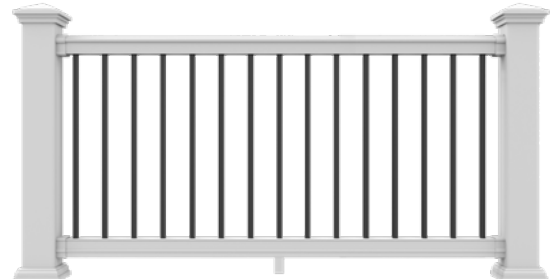
GRAY

Infill Options

On-Center Length



1 3/8" Square Balusters
Available in all 3 colors



3/4" Black Round Aluminum Balusters
Available for 36" height only

Traverse

Solid Core Composite Railing

Traverse composite railing features a traditional T-Rail profile with a smooth glossy finish. Two infill style options offer design flexibility and concealed fasteners provide a clean, finished look. Offered as a complete kit including top and bottom rails, infill, and brackets.

- Level and Stair Rail Kits: 36" height available in 6' and 8' widths
- Solid Core composite with PVC cap stock provides durability with the feel of real wood
- Will not rot, splinter, warp or stain
- Panels are true to length
- No squeaks or rattles
- Concealed fasteners offer a clean and polished look
- Code compliant for safety and security
- Transferable Limited Lifetime Warranty
- Made in the USA



Scan to Learn More



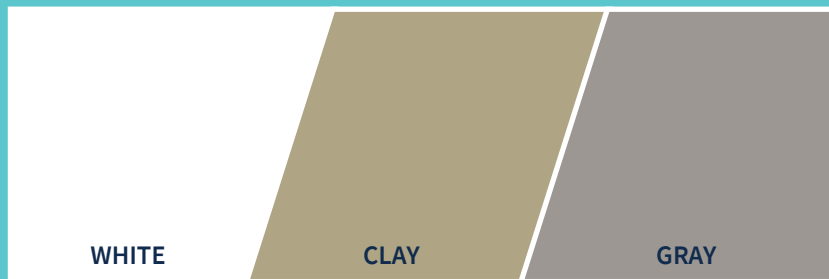
T-Rail Profile



Will Not Rot,
Splinter, Warp
or Stain



Lifetime
Warranty

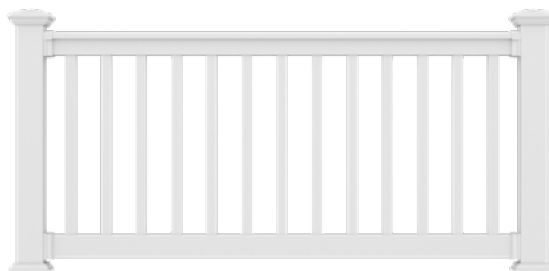


WHITE

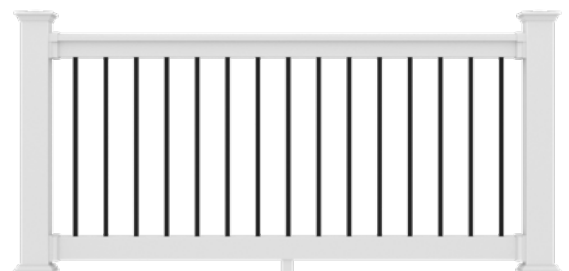
CLAY

GRAY

Infill Options True-to-Length



1 1/2" Square Balusters



3/4" Black Round Aluminum Balusters


Lighting

Improved Safety and Ambiance


Solar post caps and a full LED lighting system are available for use with all MoistureShield Solid Core composite and Compass aluminum railing products. Under-rail LED lighting strips feature an adhesive backing and easily connect with a 50W Bluetooth compatible transformer. Additional LED accessories include post caps, dome lights, flush deck and side/stair lights.

PRODUCT BENEFITS	HOMEOWNER BENEFITS	DESIGN VERSATILITY
<ul style="list-style-type: none"> LED plug-and-play lighting system does not require cutting or splicing of wires Under-rail light channel available for certain railing styles 2- and 5-way splitters and additional lighting wire available 	<ul style="list-style-type: none"> Long-lasting, true white LED lights — rated at 50,000 hours Adjust and control lighting with smartphone* Limited Warranty <p>*Transformer is Bluetooth compatible; “SmartPower50” app available from the App Store and Google Play.</p>	<ul style="list-style-type: none"> Post cap and/or under-rail LED lighting options Color matched post caps available for most railing styles Solar post caps with down lighting available for dramatic lighting effect


Lighting Accessories




Pinnacle LED Post Cap




Zenith LED Post Cap




LED Dome Light




Stair/Side Light



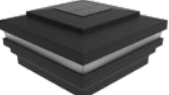
3-in-1 LED Light Post Cap



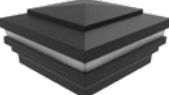
Solar Light Post Cap



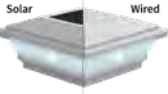
Solar Down Light Post Cap




4 1/4" Solar Light Post Cap




4 1/4" LED Light Post Cap




Contemporary Post Cap (Solar or LED)




Dome Light




Stair/Side Light




92" Under-Rail LED Lighting




Under-Rail Light Channel




Transformer with Bluetooth Capability




2-Way Splitter



5-Way Splitter



Lighting Wire — 2', 5', 7' or 9'



Flush Deck Light

COMPATIBLE WITH

- Traverse Composite Rail
- Discover Composite Rail
- Navigator Composite Rail
- Compass Aluminum Rail

Joist Tape

Added Protection for Longevity

When you choose deck boards protected with the Solid Core Difference, don't let your substructure go unprotected. Ensure every inch of your deck is designed to defy the elements with joist protection tape from MoistureShield. Its patented acrylic adhesive and woven cloth substrate create a tight seal over your deck joists and deck screws to prevent moisture infiltration. MoistureShield Joist Tape tears easily without tools, doesn't stick to itself and can be repositioned without leaving a residue, making it incredibly easy to work with on any substrate material — including lumber and steel.

MoistureShield Joist Tape is available in 2", 4" and 6" widths in 65' long rolls to accommodate your needs..

- Using deck joist tape adds up to 10+ years to the life of your deck
- Tears easily by hand without tools for easy handling on the job site
- Seals tightly around deck screws, preventing moisture infiltration and corrosion
- For application temperatures between -20°F to 200°F (-29°C and 93°C)

3 Sizes Available:



2" Joist Tape
2" width x 65' length



4" Joist Tape
4" width x 65' length



6" Joist Tape
6" width x 65' length



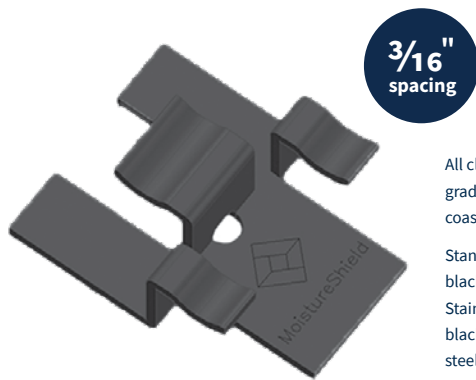
MoistureShield Deck Clip

Metal Hidden Deck Fastener

Get the most seamless installation possible with our exclusive hidden fasteners. Designed specifically for our wood composite boards, these fasteners provide superior holding power that fits securely into grooved profiles. Hidden fasteners can even add to the life of your deck by elevating the boards off the joists to reduce structural rot and mold. They're backed by a Limited Lifetime Warranty against any loose deck boards.

Benefits of our hidden deck fasteners include:

- Easy to install with pneumatic fasteners or screws
- Concealed fasteners create an unblemished deck surface
- Allows joists to completely dry out — reducing structural rot or mold
- Powder coated high strength steel or stainless steel



All clips also available in 304 grade stainless steel approved for coastal applications.

Standard Clip Packs include black coated carbon steel screws. Stainless steel kits include black-coated 305 grade stainless steel screws.

NOTE: Traditional face screws can also be used.

Fastener Options:

Complete System: Covers 50 Square Feet of Decking

- Includes 90 clips, 5 starter clips, 5 finish clips and 100 screws
- Available in hand drive or pneumatic fasteners

Contractor Pack: Covers 250 Square Feet of Decking

- Includes 450 clips and 500 pneumatic nail screws
(Starter and finisher clips are sold separately)

Deck Clip Pack: Covers 250 Square Feet of Decking

- Includes 450 clips and 500 regular screws
(Starter and finisher clips are sold separately)

Starter Clip Pack: 25 Starter Clips with 25 Screws

- Starter clips are used to fasten the first deck board to the ledger board
(Estimated need for 250 square foot deck)

Finisher Clip Pack: 25 Finish Clips with 25 Screws

- Finish clips fasten the last deck boards
(Estimated need for 250 square foot deck)

Transition Clip Pack: 25 Transition Clips with 25 Screws

- Transition clips are used for picture frame decking and repair

For Installation: Pneumatic Hidden Deck Installation Tool

AEGIS◇CLIP™

Plastic Hidden Deck Fastener

The MoistureShield Aegis Clip offers a 90-degree installation process and fastener options designed to be used on wood or steel joist systems. The teeth on the bottom of the clip bite into the grooved deck board to help control lateral movement of the deck boards. Made from glass reinforced polypropylene for lasting strength and durability.

Benefits of the Aegis Clip deck fastener include:

- Concealed fasteners create an unblemished deck surface
- Beveled edges and pre-inserted screws for easy installation
- Clip teeth bite into the groove to help control lateral movement
- Approved for ACQ joists and all other PT joists

Fastener Options:

50 Square Foot Box

- Includes: 90 fasteners with pre-inserted screws, T-15 Star driver bit and instruction sheet

250 Square Foot Bucket

- Includes: 450 fasteners with pre-inserted screws, T-15 Star driver bit and instruction sheet

Both package sizes available with stainless steel or carbon screws with options for wood or steel substructures.

Clip Box & Bucket coverage based on 16" o.c. installation.





The Contractor Program that Grows with You

Choose a brand that's invested in your success. The MoistureShield Valued Partner (MVP) Program enables contractors to get exclusive access to product training, a preferred listing in our contractor database, direct support and more points in your Contractor Rewards account.



LEARN

Arm yourself with comprehensive training and unlock exclusive selling resources. Plus and Premier level MVPs are backed by an exclusive labor warranty.

EARN

Enroll for free with Contractor Rewards. MVPs earn bonus points toward gear when you buy MoistureShield decking, railing and other products from top building materials manufacturers.

GROW

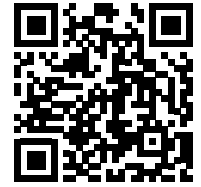
Access business-building resources and marketing tips, and have a chance to be featured in our newsletter and get your projects professionally photographed. You'll also get a listing in our preferred contractor database, with exclusive priority for Plus and Premier MVPs.



Benefits	\$0-\$24,999 in annual purchases	\$25,000-\$74,999 in annual purchases	\$75,000+ in annual purchases
Welcome Kit	Welcome Kit	Welcome Kit	Welcome Kit (+2 Premium Gear Choices)
Contractor Rewards	1X Points	2X Points	3X Points
Labor Warranty (after completed project inspection)	—	2 Years	5 Years
Marketing Funds	—	—	Yes
Listing on Find a Contractor	3rd Priority	2nd Priority	1st Priority
Additional Requirements	MSU Online Certification	MSU Online Certification	MSU Online Certification



Online Tools to Turn Your Dream Deck into Reality

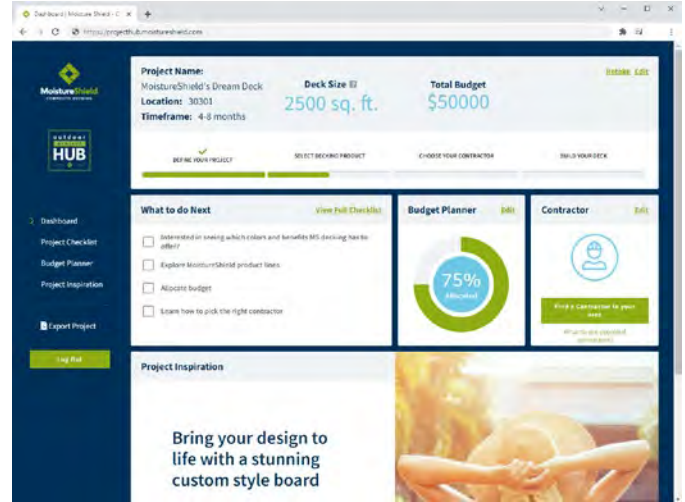


How will I use the space? What are the best products for my needs and budget? How do I find a high-quality contractor? Where should I even start?

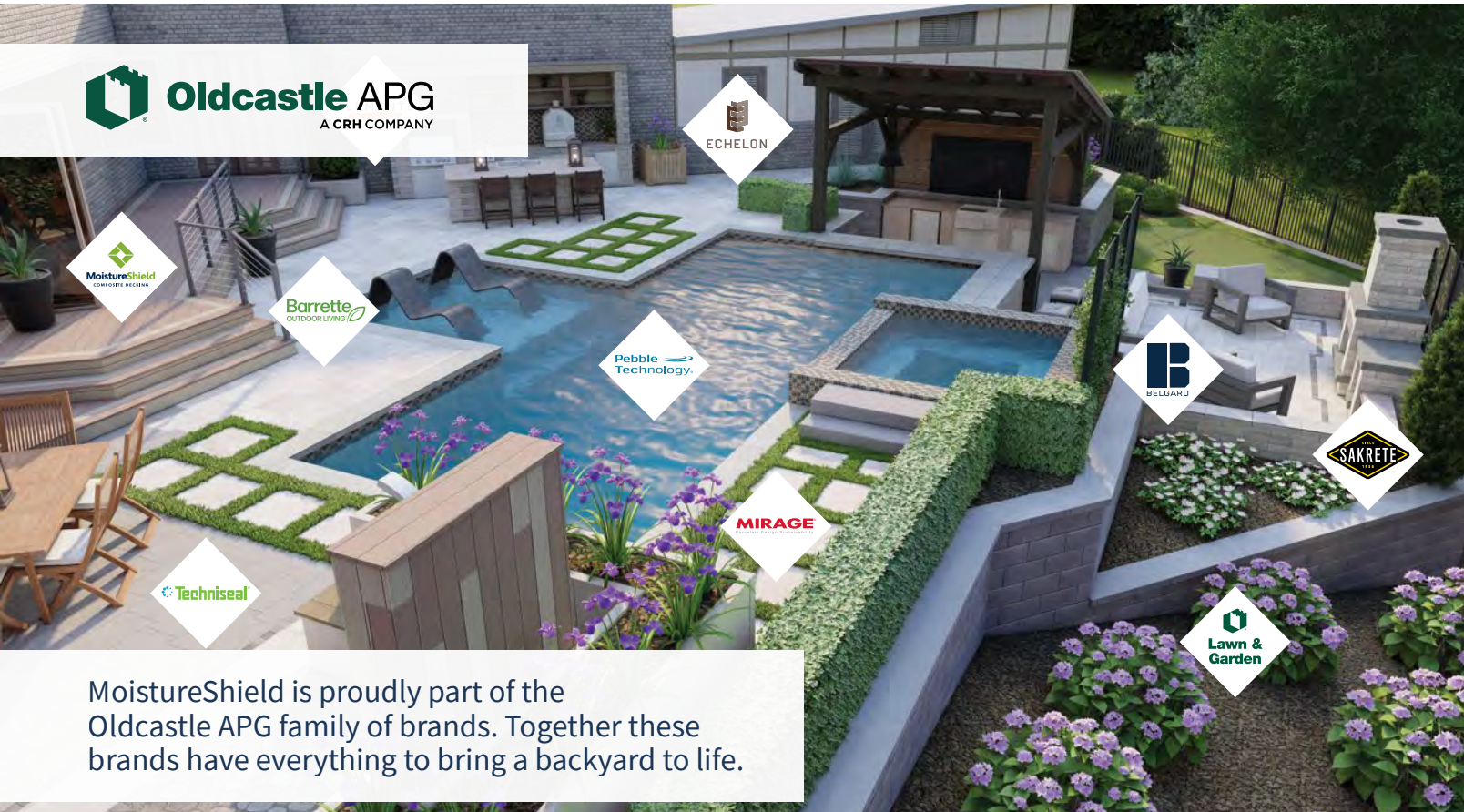
It's never been easier for homeowners to get started with the help of our new Outdoor Project Hub.

The Hub is an online tool to find inspiration, start planning with our project checklist, stay organized with our budget tracker and connect with trusted professionals (or DIY resources) to get the job done.

Are you ready to make your dream deck a reality? Visit ProjectHub.Moistureshield.com and start planning your project today!



Brands That Transform



MoistureShield is proudly part of the Oldcastle APG family of brands. Together these brands have everything to bring a backyard to life.



Discover More

Planning and inspiration tools at [MoistureShield.com](https://www.moistureshield.com)

Inspiration Gallery

A deck is not just an extension of your home, it's an extension of who you are and how you live. See what's possible and get inspired.

Visit: [MoistureShield.com/inspiration-gallery](https://www.moistureshield.com/inspiration-gallery)

Where to buy

Dealer Locator

Go online for a list of MoistureShield MVP retailers in your area.

Contractor Locator

Browse our list of MVP Deck Contractors in your area to find the best contractor for your project.

Contact MoistureShield Customer Service at 866.729.2378 to find out how to be listed as an Authorized MoistureShield Dealer or Contractor.



Decking Warranty

30-Year Limited Fade and Stain	Elevate
40-Year Limited Fade and Stain	Meridian
50-Year Limited Fade and Stain	Vision



50-Year Structural Warranty

On All Decking

Make sure to register your deck online for added peace of mind.

MoistureShield.com/Warranty

Railing Warranty

COMPASS RAILING
by MoistureShield®

SOLID CORE RAILING
by MoistureShield®



Limited Lifetime Warranty

Installation

Visit our website for instructions and installation tips.

MoistureShield.com/Installation

Care & Maintenance

MoistureShield decking is built with our proprietary Solid Core strength, and we've had zero structural failures in over 30 years.

Our decking is built to last. And, with basic care and maintenance, will keep looking like new for years to come.

Find detailed care and maintenance tips for your deck on our website.

MoistureShield.com/Care



Specifications	Vision	Vision Marine Grade 2x	Meridian	Elevate	Vantage	Vantage Marine Grade 2x
1 x 6 (1.0" x 5.4") Actual Product Length (ft.)	12', 16', 20' Solid Edge & Grooved	—	12', 16', 20' Solid Edge & Grooved	20' Solid Edge 12', 16', 20' Grooved	12', 16', 20' Solid Edge & Grooved	—
2 x 4 (1.5" x 3.5") Actual Product Length (ft.)	—	—	—	—	—	12', 16' Solid Edge
2 x 6 (1.4" x 5.4") Actual Product Length (ft.)	—	12', 16', 20' Solid Edge	—	—	—	12', 16', 20' Solid Edge
2 x 8 (1.4" x 7.25") Actual Product Length (ft.)	—	—	—	—	—	8', 12', 16', 20' Solid Edge Cape Cod Gray Only
Fascia Actual Product Length (ft.)	All Lines 0.67" x 11.25" x 12'					



**Order samples at
MoistureShield.com**



©2023 MoistureShield MS-23-01

MoistureShield.com | 1.866.729.2378

CENTRALIA, IL
866.755.7636

MOBERLY, MO
800.892.5850

MT. PLEASANT, IA
800.258.5809

SPRING HILL, KS
800.490.4320

Proudly
Supplied
By



Visit our website at www.midambuilding.com