

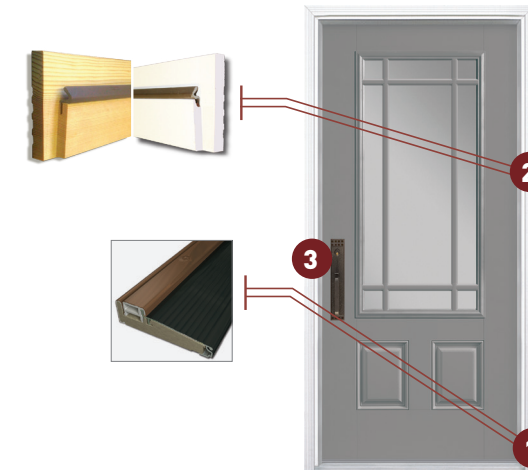
# DELUXE SERIES

LIFETIME WARRANTY ON DOOR UNIT

ALL OF THE BENEFITS  
OF THE SELECT SERIES—  
PLUS A LIMITED LIFETIME  
WARRANTY AND MORE.



Door: BLT-215-010-2 | Sidelite: BFT-615-010-1 | Transom: T-010



THE DELUXE GIVES YOU ALL  
THE BENEFITS OF THE  
SELECT PLUS MORE

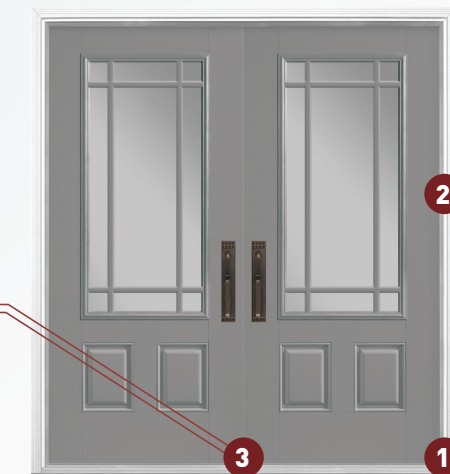
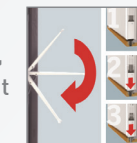
- 1) Composite Bottom Adjustable Sill
- 2) Lifetime Wood, Composite Bottom, Composite Jamb, or Aluminum Clad
- 3) Jamb Plate Optional On Single Doors With Deadbolt For Added Security

The Deluxe Series goes a full step further—to provide all of the benefits of the Select Series—plus a limited lifetime warranty on the entire door unit. Choose from a selection of lifetime wood frames, aluminum cladding, and composite jambs for a lifetime of durability. Plus all deluxe series doors come with a composite bottom, no-rot adjustable sill.



- A. Continuous head and sill maximizes stability and rigidity of door unit with less chance of water and air infiltration, racking, and bending.
- B. Lifetime warranty jambs provide protection from **rot, mold, water damage and warping**. Available in paint or sustainable wood.
- C. Composite bottoms and full composite jambs in Fir and Oak texture provide the ultimate strength and stability.
- D. White cap composite jamb—**no painting**.
- E. Aluminum clad jamb—**no painting**.

Easy to use—with one flip of the hand, the door is sealed at the top and bottom.



Double doors, and doors with handicap sills, require adequate overhang.

- 1) Composite Bottom Adjustable Sills
- 2) Lifetime Wood, Composite Bottom, Composite Jamb, Or Aluminum Clad
- 3) Flip Lever Astragal Easy To Operate

## LIFETIME JAMBS

Choose from Lifetime Wood Frames—  
Primed or Clear

Aluminum cladding  
Composite bottom jambs  
Composite jambs

### Guaranteed rot free for a lifetime

Superior construction  
Paint & Stain adhesion  
Industry's Leading warranty against rot



- 1) Composite Bottom Adjustable Sill
- 2) Lifetime Jambs
- 3) Storm Door Ready Mull Posts