



2021 PRODUCT CATALOG
TAMLYN[®]
FAMILY. VALUE. SERVICE.

SIDING ACCESSORIES

WATER MANAGEMENT | XTREMEINTERIOR[™] | XTREMETRIM[®] | XTREMECOLOR[™] FLASHING | SIDING ACCESSORIES | VENTILATION | METAL FLASHING | CONNECTORS



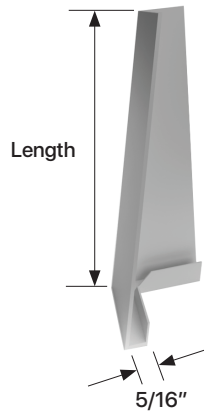
TAMLYN®

FAMILY. VALUE. SERVICE.

TAMLYN was established in May 1971 by Ron Tamlyn, Sr. with \$800 borrowed money and help from his wife, Jean, in a small shed in the back yard of their modest home in Bellaire, Texas. From a small shed, TAMLYN became a multi-million dollar, international business with a product line to match. In 2017, Tom Tamlyn became CEO and Miguel Gonzales now leads TAMLYN as President. Our history is one of quality, innovation, and proven performance. We are proud to represent the manufacturing end of the building products industry, and remain a competitive manufacturer committed to making products in America, giving customers a choice and not putting all their eggs in an uncertain import basket. An overwhelming majority of our products are still made in the USA. We believe it matters in helping America keep control of its destiny.



OCI



DESIGN FEATURES

The Traditional corner look that emulates hand fitted board functions at the corners of siding plank walls. The individual corners create the “sawtooth” look that has a timeless appeal on craftsman and other walls. Available in sizes for each common plank width and in both smooth and textured finishes to compliment the siding being used.

MATERIAL

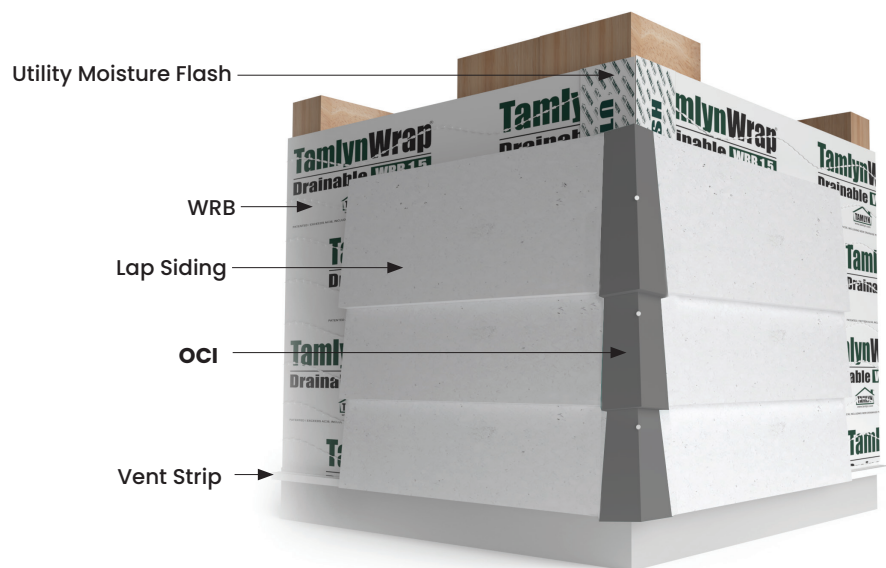
.019 ± .003 Aluminum sheet coated on both sides with paint system that is specifically formulated for residential exterior applications. Also available in colors.

NOTE

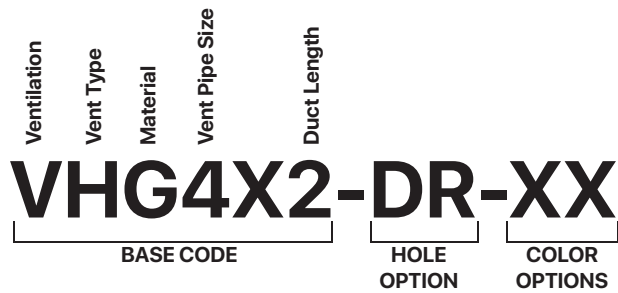
Available in 5/8" and other siding sizes upon request. Available in most popular siding and soffit colors.

ITEM ID	FINISH	LENGTH
OCI6	SMOOTH	5-1/4 to 6-1/4"
OCI8	SMOOTH	7-1/4 to 8-1/4"
OCI9	SMOOTH	9-1/4"
OCI12	SMOOTH	12"

All sizes also available in Woodgrain Finish
- Add "W" to part code.



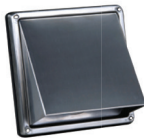
HOW TO ORDER AND SPECIFY VENTS



Vent Type

H-Hooded
D-Domed
L- Louvered
E- Eave Cone Diffuser

Hooded



Domed



Louvered



Eave Cone



MATERIAL

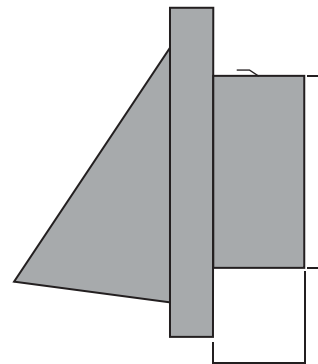
G- Galvanized Steel(Paintable)
S- Stainless Steel

Vent Pipe Size

4-4"
6-6"
8-8"

Duct Length

2-2"

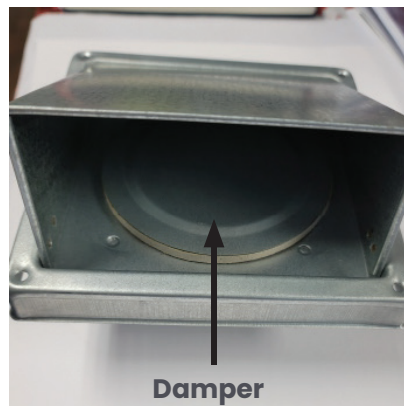
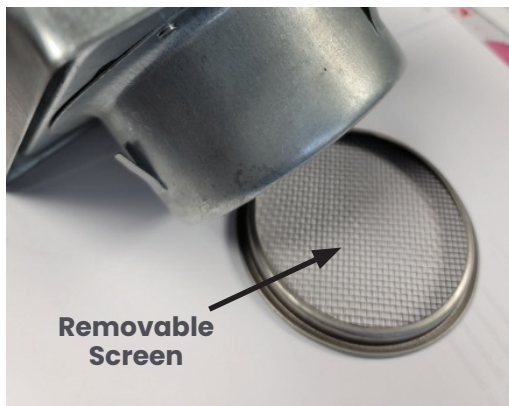


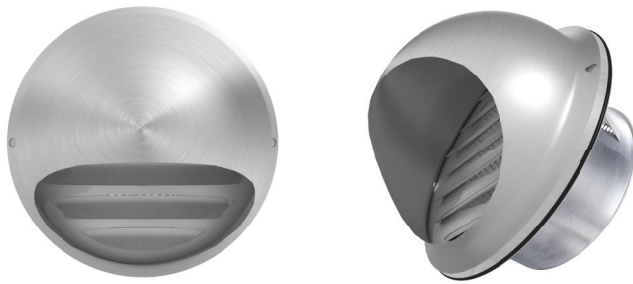
Vent Pipe Size

Duct Length

Type

D- Damper
DR- Damper & Removeable screen
R- Removable screen



VDS / VDG Series (Dome Vent)

ITEM ID	PIPE SIZE	NFA*	MATERIAL
VDG4X2	4"	7.44	Galvanized
VDG6X2	6"	11.16	Galvanized
VDS4X2	4"	7.44	Stainless Steel
VDS6X2	6"	11.16	Stainless Steel

Specify vent type at the time of ordering -refer to page 229

VHS / VHG Series (Hooded Vent)

ITEM ID	PIPE SIZE	NFA*	MATERIAL
VHG4X2	4"	11	Galvanized
VHG6X2	6"	16.5	Galvanized
VHS4X2	4"	11	Stainless Steel
VHS6X2	6"	16.5	Stainless Steel

Specify vent type at the time of ordering -refer to page 229

DESIGN FEATURES

Though wall or soffit vents designed to last as long as the building. Made from premium quality stainless steel in a satin finish and includes stainless steel mounting screws. And available in galvanized steel that is mill finish, primed, or custom color matched for projects.

MATERIALS

304 Grade Satin Finish, Stainless Steel, Stainless Mounting Screws, Ember Proof Mesh, Sealing Gaskets.

26 Ga Galvanized Steel, Mounting Screws, Ember Proof Mesh, Sealing Gaskets.

Finish is Powder Coated 26 GA Galvanized Steel, Mounting Screws, Ember Proof Mesh, Sealing Gaskets.

INSTALLATION

Vents and Diffusers are supplied with mounting screws and mounting gasket for wood, cement siding, or other surfaces. In brick or masonry walls, it is necessary to pre-drill for the screws. If additional sealant required, use a superior quality exterior approved product. Inspect and remove any accumulated debris/lint at regular periods, but not less than twice a year. For best practice installation; use XtremeBlock™.

NOTES

Special Order Options:

- 3" to 8" Duct Sizes
- Several 6" & 8" Duct Sizes in stock
- Dome Vents with Dryer Damper
- Hooded fresh air or open for utility lines (call for details)

*NFA = net free area / sq.in. per lined ft.

FINISH

Stocked in artic white, aged pewter, and dark bronze, Available in popular siding/soffit colors.

DESIGN FEATURES

Though wall or soffit vents designed to last as long as the building. Made from premium quality stainless steel in a satin finish and includes stainless steel mounting screws. And available in galvanized steel that is mill finish, primed, or custom color matched for projects.

MATERIALS

304 Grade Satin Finish, Stainless Steel, Stainless Mounting Screws, Ember Proof Mesh, Sealing Gaskets.

26 Ga Galvanized Steel, Mounting Screws, Ember Proof Mesh, Sealing Gaskets.

Finish is Powder Coated 26 GA Galvanized Steel, Mounting Screws, Ember Proof Mesh, Sealing Gaskets.

INSTALLATION

Vents and Diffusers are supplied with mounting screws and mounting gasket for wood, cement siding, or other surfaces. In brick or masonry walls, it is necessary to pre-drill for the screws. If additional sealant required, use a superior quality exterior approved product. Inspect and remove any accumulated debris/lint at regular periods, but not less than twice a year. For best practice installation; use XtremeBlock™.

NOTES

Special Order Options:

- 3" to 8" Duct Sizes
- Several 6" & 8" Duct Sizes in stock
- Dome Vents with Dryer Damper
- Hooded fresh air or open for utility lines
(call for details)

*NFA = net free area / sq.in. per lineal ft.

FINISH

Stocked in artc white, aged pewter, and dark bronze, Available in popular siding/soffit colors.

VLS / VLG Series (Louver Vent)



ITEM ID	PIPE SIZE	NFA *	MATERIAL
VLG4X2	4"	10.84	Galvanized
VLG6X2	6"	16.26	Galvanized
VLS4X2	4"	10.84	Stainless Steel
VLS6X2	6"	16.26	Stainless Steel

Specify vent type at the time of ordering -refer to page 229

VES / VEG Diffuser Series (Eave Cone Vent)



ITEM ID	PIPE SIZE	NFA *	MATERIAL
VEG4X2	4"	1 to 4.95	Galvanized
VEG6X2	6"	1 to 7.42	Galvanized
VES4X2	4"	1 to 4.95	Stainless Steel
VES6X2	6"	1 to 7.42	Stainless Steel

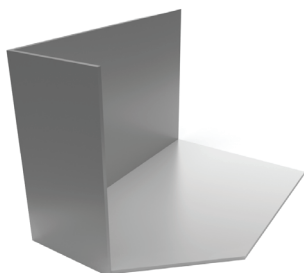
Specify vent type at the time of ordering -refer to page 229

KOFR/KOFL

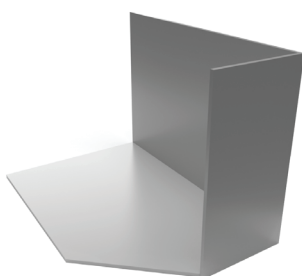
DESIGN FEATURES

Kick Out Flash is a code specified item that should be installed on all roofs where a lower roof line terminates against a vertical wall. The kick out is installed above the rain gutter or drip edge where the roof meets a vertical wall. It kicks out rain water and diverts it away from the lower wall. Made from 0.040 welded aluminum for seamless protection. Available in primed for jobsite finish or color-matched to any color. Minimums apply to color orders.

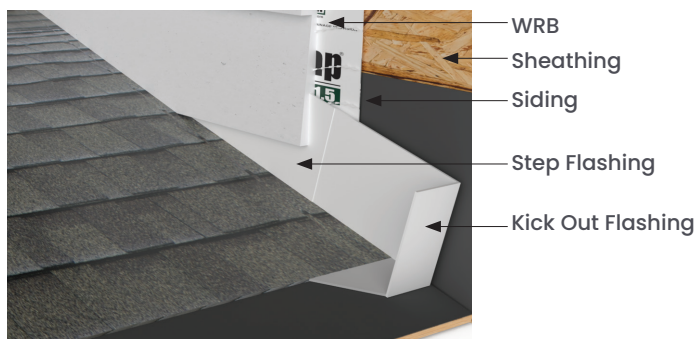
For use with 8/12 pitch or less.



KOFR



KOFL



FASCIA CORNER

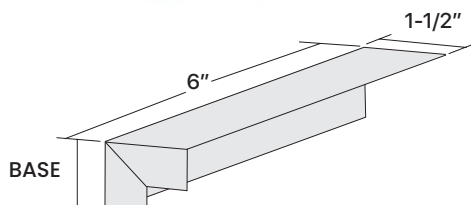
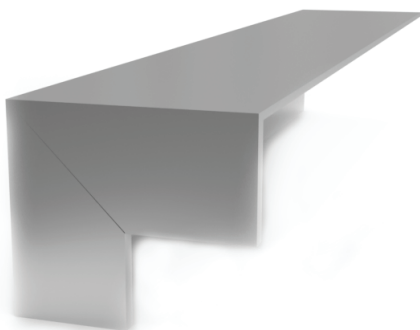
FC6C

DESIGN FEATURES

Use to dress up home by covering joint of roof line fascia boards. Embossed sides give top quality finished appearance.

MATERIAL

26 Ga GZD Steel - Stucco Embossed



GREEN BAY, WI

551 Packerland Dr.
1-920-499-2117

Email: woolfgb@woolfdistributing.com
 Orders: order-gb@woolfdistributing.com

PEORIA, IL

515 South Maxwell Rd.
1-309-697-1760

Email: woolfpe@woolfdistributing.com
 Orders: order-pe@woolfdistributing.com

WOODSTOCK, IL

1625 West Lake Shore Dr.
woolf-ws@woolfdistributing.com
 Building Materials: **1-815-477-9680**
order-ws@woolfdistributing.com
 Millwork: **1-815-356-0438**
order-mw@woolfdistributing.com
 Commercial: **1-815-527-9288**
commercialdoors@woolfdistributing.com