

ALREX™

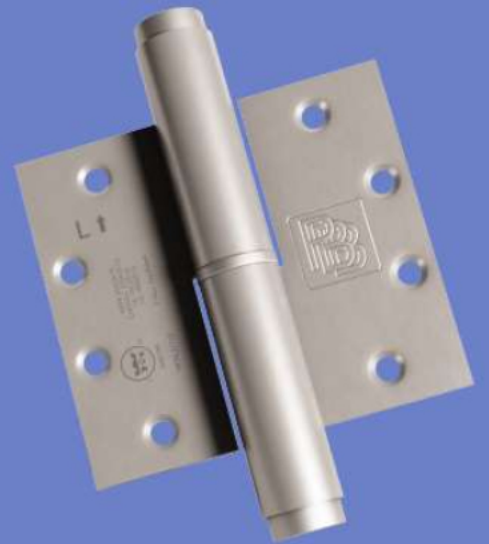


Patent: #10633905, #11268312

Before

ALREX

THE NO-PROBLEM DOOR CLOSER



- Easy to Install
- Cost Effective
- Vandal Resistant
- Sleek/Beautiful
- Full Feature Closer

Presents...

The Next Generation Hydraulic Door Closer



Alrex Hinge

An "Alrex" hinge is a full function hydraulic door closer hinge. It contains all the features of a door closer, but without the installation, service, and aesthetic issues. It is essentially a door closer in a hinge, saving you time and money, while eliminating unsightly closers.

Adjustability

-Spring tension (closing sweep speed) can be adjusted with the included tool on the top of the hinge (Follow enclosed directions for adjustments).

-Hydraulic tension (latch strength) can be adjusted with the included tool at the bottom of the hinge (Follow enclosed directions for adjustments).



Functionality

- Provides adjustable closing sweep & latch speed from 175 degrees.
- Hold open option provides hold open at 85 and 135 degrees with adjustable closing & latching.
- Back check available.



Features & Benefits

Intertek

Meets A156.17 Grade 1 requirements for Self Closing Hydraulic Hinges. 1,000,000 cycles.

Intertek W/N. 21710

Meets UL 10C requirements for 180 minute exposure period with hose stream in accordance with NFPA 252 and UL 10C under positive furnace pressure and CAN/ULC S104 and UL 10B under neutral furnace pressure.

Weight Capacity Limit & Requirements

Doors under 100 lbs require a set of 2 hydraulic hinges + 1 dummy center hinge. Doors 100 lbs up to 150 lbs may require 3 hydraulic hinges. Heavier doors may require 4.

Gauge of Material

.134" on all hinges

Base Material

Stainless Steel Grade 304

Templating

All hinges have ANSI template hole locations for wood and metal doors.

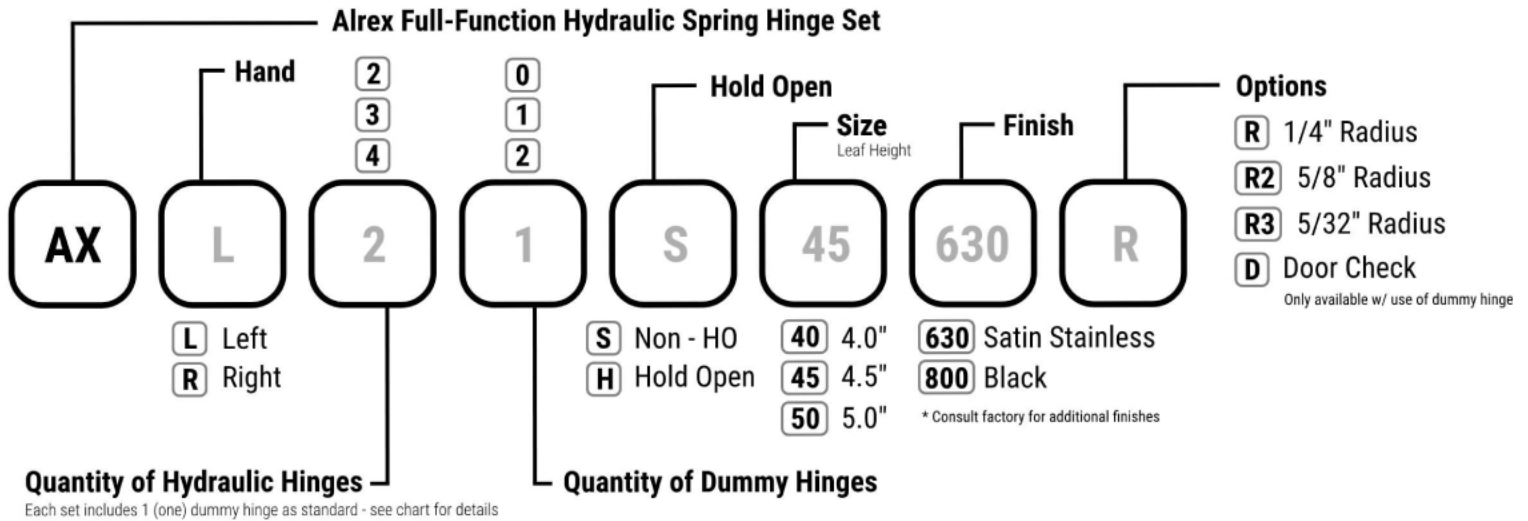
Fasteners

Each closing system contains a full set of machine and wood screws.

ADA

ADA listed as meeting requirements of 5 lb maximum opening force

How To Order



Traditional Door Closer



Alrex Hinge Door Closer



Visual Comparison

Installation Comparison

Traditional Door Closer

(Around 1 hour - Not including hinge install)



Alrex Hinge Door Closer

(Around 10 minutes)



	Traditional Door Closer	Alrex Hinge Door Closer
Door Closing and Latching Speed customization	✓	✓
Door Stop and Hold Open capabilities	✓	✓
Installation & adjustment time under 15 minutes	✗	✓
Vandal resistant	✗	✓
Swiss cheese door (abundance of screw holes)	✓	✗

Revolutionizing The Hinge



Applications:

- Arched Doors
- Luxury Residential
- Transom Doors
- Highly Aesthetic
- Dutch Doors
- Hospitality
- Quiet Environment
- Frameless Doors

Warranty Policy: 10 Year Mechanical

