



ARCHITECTURAL | COMMERCIAL
INTERIOR DOORS



We invite you to discover what **over 40 years** of wood door manufacturing experience can bring to your next project.

A 3rd generation, **family-owned company** located in the beautiful Pacific Northwest, Lynden Door, Inc. builds **residential, commercial** and **architectural** doors suited for nearly every type of application or market segment, no matter the scale, location or complexity. Our **customization capabilities** and **wide breadth of interior door** styles and designs will offer a solution for any of your decor and building needs.

Lynden Door has a unique history of serving God through supporting the needs of its employees, their families and evangelical ministries in the community of Lynden, WA and beyond.

We trust that you will find our passion for crafting beautiful, durable, high quality doors and providing exceptional customer service is distinctly evident.

We are genuinely grateful for your business and support.



Photo Credit: Weber Thompson



THE RISE ON MADISON

1400 Madison, Seattle, WA

Developer: **Bellwether Housing & Plymouth Housing**
Contractor: **Turner Construction**
Architect: **Weber Thompson**
Products: **LD Architectural Series
Quarter Sliced White
Birch, Custom Stained**

As featured on cover page

SERVICES | ENHANCEMENTS



STC Sound transmission control up to STC 49. Lynden Door offers sound rated doors to meet the demands of high-sound impact areas found in both residential communities and businesses.



SUSTAINABLE Lynden Door is responsive to sustainable construction programs and materials active in the marketplace. LEED, Green Globes®, and other sustainable programs and compliance options are available for virtually every door we make. We are also able to meet current California, US and Canadian formaldehyde emissions standards.



CUSTOM ROUTING AND INLAY Add design flair to wood veneer or painted hardboard with custom CNC routed lines and angles.



FACTORY MACHINING FOR HARDWARE Lynden Door is fully equipped to carry out the most demanding and complex machining instructions and hardware preparations with automated precision.



FIRE DOORS

Fire Doors Lynden Door offers a full suite of positive and neutral pressure fire doors and is certified to fabricate, machine, and label fire doors up to 90-minutes. We are equipped to label singles, standard pairs, and double egress pairs. Lynden Door Category A and Category B (Positive Pressure) doors are compliant with current requirements according to the UL 10C and NFPA252 testing requirements. In addition, the neutral pressure doors are in compliance with UL10B and CAN/ULC S104 requirements.

- STC ratings for fire doors.
- Category A default construction for 45, 60, & 90-minute doors.
- Category B default construction for 20-minute doors.
- A wide variety of door skin options with fire ratings including molded, architectural wood veneer, hardboard, and high pressure laminate.
- Factory glazing is available.

The WDMA (Wood Door Manufacturers Association) describes positive pressure openings in two categories, Category A and Category B.

Category “A”: A fire door that does not require the addition of other gasketing components to comply with positive pressure testing.

Category “B”: A fire door that requires the addition of gasketing to comply with positive pressure requirements.



LEAD-LINED Durable lead-lined doors from Lynden Door form an effective barrier to radiation; ideally suited to hospitals and other sterile environments where hygiene and x-ray protection are important.



FACTORY FINISHING Lynden Door offers a variety of factory finish options for every project – clear, standard, and custom factory finishes. Other options available include custom painting and color-tinted primer. All of which are produced under very strict quality controls.



GLAZING, VISION LITES, AND APPLIED MOLDING Factory door prep and machining for in-house lite installations and applied moldings bring functionality to institutional projects.

Visit lyndendoor.com for more details



Learn more about
our FIRE DOORS

EDGE OPTIONS

Architectural doors can be customized with various edge options to meet specific design and functionality requirements. When selecting an edge option for architectural and commercial doors, it is essential to consider factors such as the intended use, design style, and maintenance. Lynden Door offers the following edge options:



1. Wood Veneer Edge / VEB

Matching wood veneer is applied to the vertical edges of the door to provide a seamless and natural look. Veneered edges are applied after the faces to conceal any exposed crossband or substrate.

2. High Pressure Decorative Laminate Edge / HPDL

Matching HPDL is applied to the vertical edges or stiles of the door to provide a seamless and pleasing appearance. HPDL edges are applied after the faces to conceal any exposed crossband or substrate.

3. Hardwood Stile Edge / HWE

The vertical edges or stiles are composed of compatible or matching outer hardwood and SCL (Structural Composite Lumber) or mill option hardwood backer. Hardwood split face stiles ensure added durability for impact and are designed for factory prefit & beveled doors. *(When additional trimming is required, be sure to specify full-face stiles, see below).*

4. Full-Face Hardwood Edge / 3/4\" HWE

The vertical stiles or edges are composed of a minimum 3/4\" solid compatible or matching outer hardwood prior to factory trimming or prefit. Full-face hardwood edges should be selected for use when retrofitting doors or where additional trimming / pre-fitting may be required. *(Note: Full-Face stiles are not available for doors rated over 20-minutes or any Category A fire door construction.)*

LD SERIES ARCHITECTURAL

Modern Architecture often calls for doors capable of meeting the highest levels of specification driven performance standards, fulfilling the complex design requirements for both the aesthetic and functional aspects of a project. This may include buildings that experience high traffic, heightened security, sound attenuation, and are required to comply with stringent life/safety conditions. Lynden Door has designed the **Architectural (LD) Series** with these projects in mind - architectural and commercial applications to comply with high standards of construction and design.

Lynden Door is committed to going the extra mile for our customers. Institutional projects such as hospitals, schools and office buildings can be complex, demanding many door types and sizes with a multitude of finish and hardware prep requirements. Beginning with your project quote and ending with delivery to your job site or door shop, our personalized service ensures you get what you need to meet your customer's requirements. Lynden Door provides a wide range of quality products and value-added services to meet your institutional project needs, with the expertise to do it right.



RIFT CUT
RED OAK



ROTARY WHITE
BIRCH



HORIZONTAL
WALNUT



PLAIN SLICED
CHERRY

INSTITUTIONAL • OFFICE HIGH RISE • HOSPITALITY

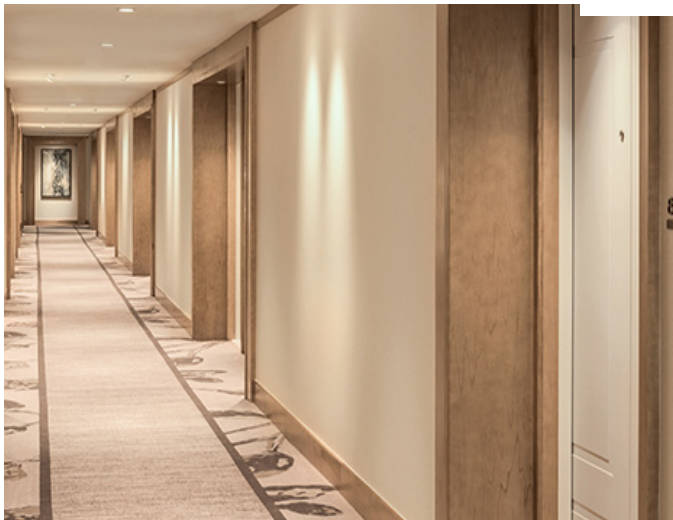
K-12 AND HIGHER EDUCATION, HEALTHCARE, CLASS A OFFICE
HIGH-RISE, LUXURY HOTELS, GOVERNMENT, MILITARY



Learn more about
our LD SERIES

Custom Routed, Painted Hardboard

PROJECT: **JW Marriott Parq Vancouver**



- Bonded / Sanded Core Assembly
- DHA Custom 'A' and Premium 'AA' grade wood veneer, HPDL and High Density MDF faces available
- Meets Extra-Heavy-Duty Performance Standards as noted by WDMA I.S. 1-A, AWI (AWS), AWMAC and WI (NAAWS)
- Lead-lined and Other Specialty Core Options Available
- Meets CARB Phase II, TSCA Title VI and SOR/2021-48 formaldehyde emissions requirements
- 20, 45, 60 and 90-Minute Fire Door Options Available
- Sustainable and Acoustical Rated Options Available

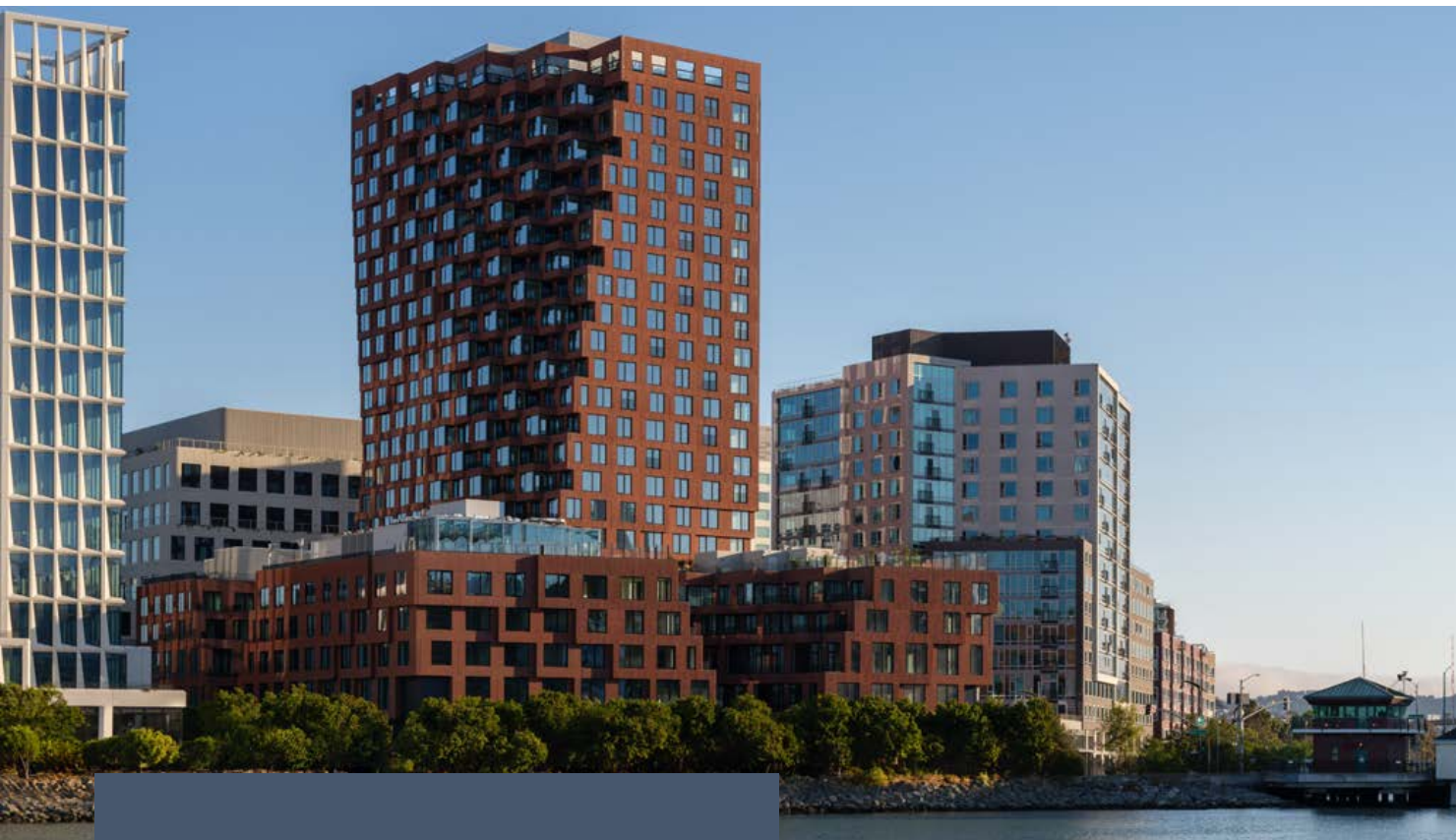
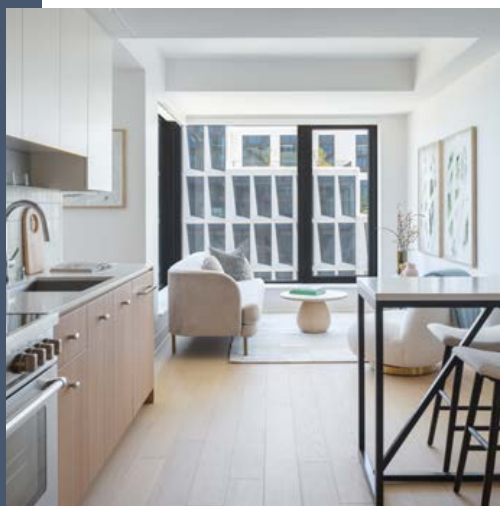


PHOTO CREDIT: © Jason O'Rear

MISSION ROCK PARCEL A

San Francisco, California

Developer: **Tishman Speyer**
 Contractor: **Swinerton**
 Architect: **Perry Architects**
 Products: **LD24 with custom stained Rift White Oak / VanAir**



VENTILATED RIFT
WHITE OAK

CD / IC SERIES COMMERCIAL

Doors Designed for commercial applications meet specific standards of construction. **CD and IC Series** doors meet WDMA performance standards and may be used in applications where an architectural door (LD Series) would typically be specified, but where the application is less rigorous than the architectural standard.



HIGH PRESSURE
DECORATIVE
LAMINATE



ROTARY
WHITE MAPLE



STILELINE
WHITE OAK



ROTARY
NATURAL BIRCH

PROJECT: *Park at Bankers Hill*



Painted Hardboard

CD SERIES

- Bonded Core Assembly
- HPVA Architectural "A" Grade Wood Veneer
- Matching Hardwood or Softwood Vertical Stile Options Available
- Meets Performance Standards as noted by WDMA I.S 1-A, AWI (AWS), AWMAC and WI (NAAWS)
- Meets CARB Phase II, TSCA Title VI and SOR/2021-148 formaldehyde emissions requirements
- 20, 45, 60 and 90-Minute Fire Door Options Available
- Sustainable and Acoustical Rated Options Available

IC SERIES

- Bonded Core Assembly
- Limited Wood Veneers: Rotary Natural Birch, Rotary Uniform Light Birch, Rotary White Maple, Plain Sliced Red Oak
- Matching Hardwood or Softwood Vertical Stile Options Available
- Meets Performance Standards as noted by WDMA I.S. 1-A, AWI (AWS), AWMAC and WI (NAAWS)
- Meets CARB Phase II, TSCA Title VI and SOR/2021-148 formaldehyde emissions requirements.
- 20 and 45-Minute Fire Door Options Available
- Sustainable Options Available

Because all our operations are under one roof, we have unique value engineering capabilities, including optimizing product durability and appearance. We also have value-added services such as factory finishing, ensuring consistency and quality, and tightly specified machining ensuring hardware preparation accuracy. In addition, we have staged delivery options that make sure you have product when and where you need it. Lynden Door provides services that allow you to deliver products at a variety of price points to serve your customer's needs.

PROJECT: *181 Fremont*



Custom Walnut

RETAIL • OFFICE • MIXED-USE

RESTAURANTS, SHOPPING CENTERS, LIBRARY, THEATER,
HOTEL COMMON AREAS



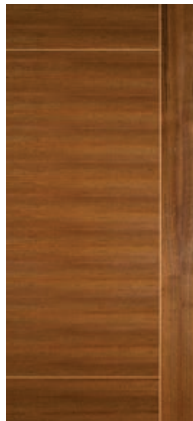
Learn more about
our CD SERIES



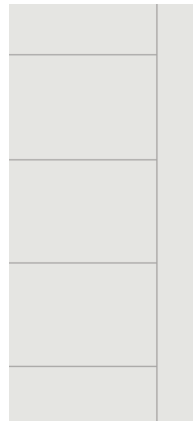
Learn more about
our IC SERIES

SD SERIES / STANDARD CONSTRUCTION

Interior Doors designed for light commercial applications. Our **Standard Construction** doors present a wide range of features, sizes, profiles and finishes with competitive pricing.



STILELINE
WALNUT CUSTOM
ROUTED



ROUTED PRIMED
HARDBOARD



HIGH DENSITY
MOLDED
FIBERBOARD



PREFINISHED
HARDBOARD RIFT
CUT SLATE

- Wood Veneers, Molded Profiles, Pre-finished and Smooth or Embossed and Primed Flush.
- 1-3/8" (H8 & P8) Non-Rated; 1-3/4" (H4 & P4) Non-Rated and 20-Minute (P20) Fire Rated Options Available
- Hollow or Solid Core Construction
- Meets CARB Phase II, TSCA Title VI and SOR/2021-148 formaldehyde emission requirements
- Custom Factory Stain and Custom Paint Options Available

PROJECT: *Inn at Lynden*



High Density Molded Fiberboard

LIGHT COMMERCIAL

MULTI-FAMILY • ASSISTED LIVING • HOSPITALITY

EXTENDED STAY HOTELS, STUDENT HOUSING,
APARTMENTS, LONG TERM CARE FACILITIES



Learn more about
our SD SERIES

PROJECT: *Maple Street Lofts*



Lynden Door builds a full range of doors to meet virtually every application – doors that are durable enough to survive the daily rigors of the most highly trafficked and used spaces in the built environment. Our breadth of product offering, from veneer, hardboard and molded profiles, ensure that a single vendor can meet all interior door needs for a wide range of projects.



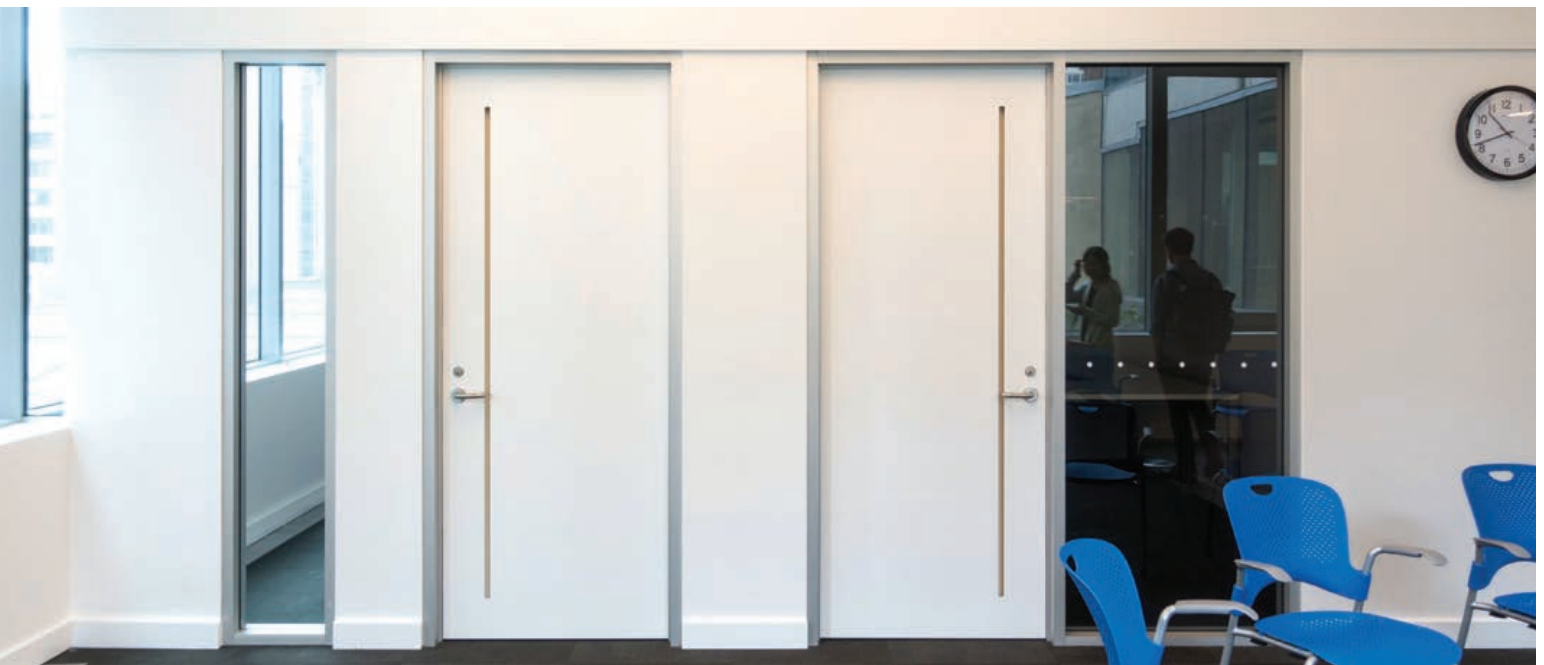
Prefinished Hardboard Rift Cut Slate | Molded Mercer, Flat Panel & Smooth | PHOTO CREDIT: Nicholas & Associates, Inc.

VENTILATED DOOR

The Lynden Ventilated Door challenges the traditionally held views of what a door is supposed to do. It is becoming an essential component of a commercial building's circulation system.

Ventilated doors provide architects and designers with the ability to create simple air flow pathways. This reduces the need for vents, grilles, dropped ceilings and ducting which can interfere with surrounding design elements and aesthetics.

RETAIL • OFFICE • ASSISTED LIVING • HOSPITALITY



AIRFLOW PATHWAY

Air flows in from one side, through the door core and out the opposing side.

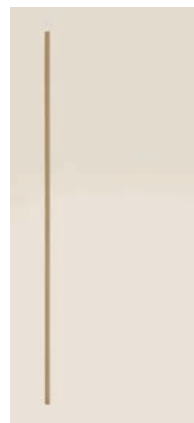


SOUND PRIVACY

Lab-tested baffling and resonators are integrated into the door core to block high and low frequency sound.



**VENTILATED
STILELINE
WALNUT**



**VENTILATED
PRIMED
HARDBOARD**



**VENTILATED
ROTARY NATURAL
MAPLE**



**VENTILATED
PREFINISHED
HARDBOARD RIFT
WALNUT**

VanAir™ *Ventilated Door*

PROJECT: *Vancouver Public Library*

Every Lynden Ventilated Door can be made to specification in a wide array of widths, heights, wood veneers, and finishes to ensure compatibility with your project. Specify air flow and sound privacy performance to suit your project needs.

- Create Comfortable Room Environments by Alleviating Temperature, Humidity and Pressure Build-up
- Reduce Carbon Dioxide Build-up for Healthier Spaces

- 1-3/8" and 1-3/4" Non-rated
- Keep Laundry Appliances, Bathroom Exhaust Fans and Mechanical Equipment Running Efficiently
- Improve Ventilation Without Having to Use Unsightly Vents and Grilles
- Wood Veneers, Pre-finished and Primed Hardboard and High Pressure Decorative Laminate



Ventilated Rift Cut White Oak

PROJECT: *Travelers Insurance*

CONSTRUCTION ATTRIBUTES

	VENEER (RESIDENTIAL/LIGHT COMMERCIAL) VENEER (COMMERCIAL SKINS) PRIMED FLUSH (MDF) PAINT GRADE MDO PREFINISHED HARDBOARD LAMINATE (HPDL) MOLDED (RAISED PANEL) MOLDED (FLAT PANEL) 1-3/8" (NON-RATED) 1-3/4" * CORE LEAD-LINED NON-BONDED ASSEMBLY BONDED ASSEMBLY FIBER (MDF) / SOFTWOOD FINGERJOINT EDGE SCS INDOOR ADVANTAGE GOLD SOLID SOFTWOOD HARDWOOD / MATCHING EDGE FIRE-RATED CARB PHASE II / TSCA TITLE VI / CEPA CERTIFIED WOOD																	
LYNDEN VENTILATED DOOR																		
VA8	•	•	•	•	•	•			•		VENTED		•		•		•	•
VA4	•	•	•	•	•	•				•	VENTED			•	•		•	
ARCHITECTURAL (LD)																		
LD2000		•	•	•		•			•	•	PARTICLE BOARD	•		•		•	20-MINUTE	•
LD2500		•	•	•		•			•	•	AGFIBER			•		•	20-MINUTE	•
LD3500		•	•	•		•			•	•	SCL	•		•		•	20-MINUTE	•
LD45-AG		•	•	•		•				•	AGFIBER			•		•	45-MINUTE	•
LD4500		•	•	•		•				•	MINERAL	•		•		•	45-MINUTE	•
LD6000		•	•	•		•				•	MINERAL	•		•		•	60-MINUTE	•
LD9000		•	•	•		•				•	MINERAL			•		•	90-MINUTE	•
SOUND TRANSMISSION CLASS (STC)																		
LDSD (36-49)		•	•	•		•				•	ACOUSTICAL COMPOSITE			•			•	20 & 45 MINUTE
COMMERCIAL (CD)																		
CD200		•	•	•		•			•	•	PARTICLE BOARD			•		•	•	•
CD250		•	•	•		•			•	•	AGFIBER			•		•	•	•
CD350		•	•	•		•			•	•	SCL			•		•	•	•
CD45-AG		•	•	•		•				•	AGFIBER			•		•	•	•
CD450		•	•	•		•				•	MINERAL			•		•	•	•
CD600		•	•	•		•				•	MINERAL			•		•	•	•
CD900		•	•	•		•				•	MINERAL			•		•	•	•
INTERIOR COMMERCIAL (IC)																		
IC200	•			•		•				•	•	PARTICLE BOARD			•		•	•
IC350	•			•		•				•	•	SCL			•		•	•
IC2000	•			•		•				•	•	PARTICLE BOARD			•		•	•
IC3500	•			•		•				•	•	SCL			•		•	•
IC45AG	•			•		•					•	AGFIBER			•		•	•
STANDARD CONSTRUCTION																		
H8 (Hollow 1-3/8")	•	•	•	•	•		•	•	•		HOLLOW CORE		•		•	•	•	•
H4 (Hollow 1-3/4")	•	•	•	•	•		•	•		•	HOLLOW CORE		•		•	•	•	•
P8 (Particle 1-3/8")	•	•	•	•	•		•	•	•		PARTICLE BOARD		•		•	•	•	•
P4 (Particle 1-3/4")	•	•	•	•	•		•	•		•	PARTICLE BOARD		•		•	•	•	•
P20 (Particle 1-3/4" 20-Min)	•	•	•	•	•		•	•		•	PARTICLE BOARD		•		•	•	•	20-MINUTE
45-Min Rated Agfiber	•	•	•	•	•				•		AGFIBER		•			•	•	45-MINUTE
45-Min Rated Mineral		•	•	•	•				•		MINERAL		•			•	•	45-MINUTE
60-Min Rated Mineral		•	•	•	•				•		MINERAL		•			•	•	60-MINUTE
90-Min Rated Mineral		•	•	•	•				•		MINERAL		•			•	•	90-MINUTE

*Please note that the LDSD 49 is 2-1/4" thick



Lynden Door, Lynden WA



SUSTAINABILITY

To learn more about the LEED, Green Globes®, and other sustainable programs and compliance options please scan the QR code.



LYNDEN DOOR CARE & HANDLING INSTRUCTIONS FACTORY WARRANTIES

For information, please scan the QR code.

2077 MAIN ST., P.O. BOX 528
LYNDEN, WA 98264

PHONE: 800.631.DOOR (3667)
360.354.5676
FAX: 360.354.3738

INFO@LYNDENDOOR.COM

PHOTO CREDIT: MORIS MORENO
PHOTOGRAPHY



Lynden Door, Inc. All rights reserved. Printed in USA.



GREEN BAY, WI

551 Packerland Dr.
1-920-499-2117
Email:
woolfgb@woolfdistributing.com
Orders:
order-gb@woolfdistributing.com

PEORIA, IL

515 South Maxwell Rd.
1-309-697-1760
Email:
woolfpe@woolfdistributing.com
Orders:
order-pe@woolfdistributing.com

WOODSTOCK, IL

1625 West Lake Shore Dr.
woolf-ws@woolfdistributing.com
Building Materials: **1-815-477-9680**
order-ws@woolfdistributing.com
Millwork: **1-815-356-0438**
order-mw@woolfdistributing.com
Commercial: **1-815-527-9288**
commercialdoors@woolfdistributing.com