



Electrolux

## Multi Tank Rack Type Dishwasher with Energy Saving Device

ITEM # \_\_\_\_\_

MODEL # \_\_\_\_\_

NAME # \_\_\_\_\_

SIS # \_\_\_\_\_

AIA # \_\_\_\_\_



Electrolux

Multi Tank Rack Type Dishwasher with Energy Saving Device



### Multi Tank Rack Type Dishwasher with Energy Saving Device

534052 (ECRT250RA)

Multi Tank Rack Type Dishwasher with Energy Saving Device, atmospheric boiler, 250 racks/hour. Right to Left - 400V

534053 (ECRT250LA)

Multi Tank Rack Type Dishwasher with Energy Saving Device, atmospheric boiler, 250 racks/hour. Left to Right - 400V

### Short Form Specification

Item No. \_\_\_\_\_

Unit to be Electrolux multi tank rack type dishwasher with Energy Saving Device. Electrical characteristics to be 400V three phase operation. Unit to operate from \_\_\_ left to right or \_\_\_ right to left. Unit to feature atmospheric built-in boiler system with built-in rinse booster pump thus guaranteeing rinse pressure during rinse cycle. Unit to feature built in Energy Saving Device (ESD). ESD permits the unit to operate with COLD WATER (10°-30° C). Unit to have two conveyor speeds which can be selected from the control panel by the operator, 250 racks/hour or 180 racks/hour. Maximum water consumption at 250 racks/hour of only 310 lt/hr. Unit to feature large heat and noise insulated front counter balanced door for easy access of internal components. Powerful wash pump and specially designed wash spray arms to guarantee cleaning. Unit to feature as standard end of day self cleaning cycle. Drain of water from the machine can be done through the control panel. Large deep drawn 100 liter wash tank.

### Main Features

- Built-in Energy Saving Device (ESD). The ESD is an internal condenser which utilizes the steam generated by the machine in the rinse and wash tanks to heat up incoming cold water entering the booster. The incoming cold water is heated up to 50 °C and a built in booster will heat this water up to 82 °C (min) for the final sanitizing rinse.
- Built-in hot water boiler.
- Atmospheric boiler system with air break.
- Built in rinse water booster pump guarantees constant rinse pressure.
- Speed of conveyor can be set through the control panel by the operator. 180 racks/hr or 250 racks/hr.
- Built-in drain valve in the tank, allows automatic dump and fill without any interruption of the washing process.
- Separate pre-wash tank ensures that the pre-wash water temperature remains constantly below 40°C to scrape and pre-wash effectively.
- Large counter balanced inspection door allows unrestricted all round access to the wash and rinse area. Door is insulated with injected foam. This adds strength as well as reduces noise and heat loss.
- Large filters sloping towards the front to the smaller pressed filter box for quick removal. Filters feature holes smaller than the concave ant-block wash nozzles so large food cannot enter and block the wash system.
- Adjustable feet for full access underneath the machine for cleaning.
- Push button self cleaning cycle of the wash and rinse zones for ease of "end of day" cleaning.
- Wash chamber without internal pipes and therefore no hidden dirt traps.
- Self draining wash pumps provide maximum hygiene with no smells and all wash and rinse zones drain automatically at the push of a button.
- Powerful 1.0 kW wash pump.
- Low water consumption. At 250 racks per hour, the machine uses only 310 lt/hr.
- Autostart/stop ensures that the machine runs only when a rack is passing through it. This saves water and reduces energy consumption.
- Deep drawn pressed 100 liters wash tank with fully rounded corners, sloped towards the drain to prevent dirt build up provides fast drainage in only a few minutes. Pressed wash tank with no welded points offer a guaranteed water tight solution.
- Dishwasher structure is held together with a solid stainless steel tube sub-frame to provide long term sturdiness.
- All main components made in heavy duty anti-corrosive 304 type Stainless steel: tanks, panels, wash & rinse arms and caps, doors, front, handle, side panels and rack transportation system.
- Wash and rinse arms can be easily removed for cleaning.
- IPX5 water protection.
- Electronic control panel features large display for reading of wash and rinse temperatures.
- Machine predisposed for external detergent and rinse aid connections.

APPROVAL: \_\_\_\_\_



Electrolux

## Multi Tank Rack Type Dishwasher with Energy Saving Device

### Optional Accessories

- Kit end limit switch for rack type

PNC 864138 □

### Electric

#### Supply voltage:

534052(ECRT250RA)	400 V/3 ph/50 Hz
534053(ECRT250LA)	400 V/3 ph/50 Hz

Dishwasher requires only one electrical service connection. Please refer to the information below for Amp requirements.

<b>Total Amp Load:</b>	60.6A
<b>Total Installed Power:</b>	38 kW

### Water:

#### Inlet Water supply pressure:

534052(ECRT250RA)	22 - 102 psi (1.5 - 7 bar)
534053(ECRT250LA)	22 - 102 psi (1.5 - 7 bar)

#### Inlet Cold Water Supply Temperature:

10-30 °C

#### Inlet Water supply hardness:

7-14 °fH

#### Incoming Cold Water line size:

G 3/4"

#### Cold Water consumption:

310 liters/hr, adjustable on site

#### Pre wash temperature:

<40 °C

#### Pre wash tank size:

45 lt

#### Pre wash pump power:

1/2 hp (0,37 kW)

#### Wash Temperature:

55-65 °C

#### Wash tank size:

100 liters

#### Wash pump power:

2 1/2 hp (1.0 kW)

#### Wash tank heating elements:

18 kW

#### Rinse pump power:

1/2 hp (0.28 kW)

#### Final Rinse Temperature:

80-90 °C

#### Hot water booster capacity:

12 liters

#### Boiler heating elements:

18 kW

#### Drain line size:

1"1/2

### Key Information:

**Productivity racks per hour (fast speed):** 250 racks/4500 dishes, adjustable on site from 280 racks/5040 dishes to 90 racks/1620 dishes

**Productivity racks per hour (slow speed):** 180 racks / 3240 dishes, adjustable on site from 280 racks/5040 dishes to 90 racks/1620 dishes

**Table to Table connection:** 1684 mm

**Number of tanks:** 2

**Height with door open:** 2063 mm

**Charging hole size (width):** 530 mm

**Charging hole size (height):** 470 mm

**External dimensions, Height:** 1813 mm

**External dimensions, Width:** 1684 mm

**External dimensions, Depth:** 890 mm

**Net weight:** 981 lbs (445 kg)

**Shipping weight:** 510 kg

**Shipping height:** 2060 mm

**Shipping width:** 2370 mm

**Shipping depth:** 1035 mm

**Shipping volume:** 5.05 m<sup>3</sup>

**Noise level:** <70 dBA

Unit predisposed to accept external detergent dispensers, detergent probes and rinse aid dispensers.

### Air Emission:

**Air Flow:** 180 m<sup>3</sup>/h

**Air temperature:** 30 °C

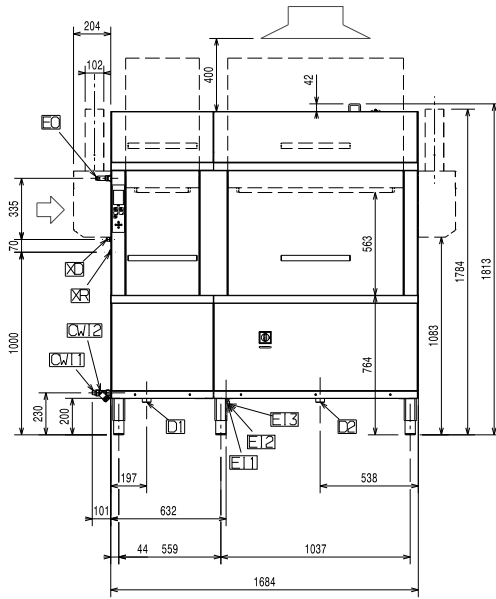
**Air humidity:** 95%



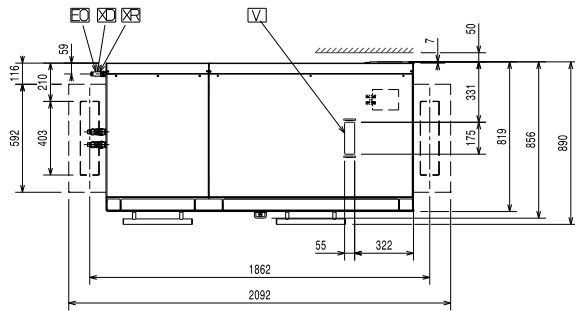
Electrolux

# Multi Tank Rack Type Dishwasher with Energy Saving Device

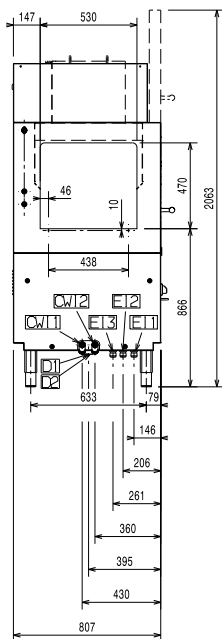
**Front**



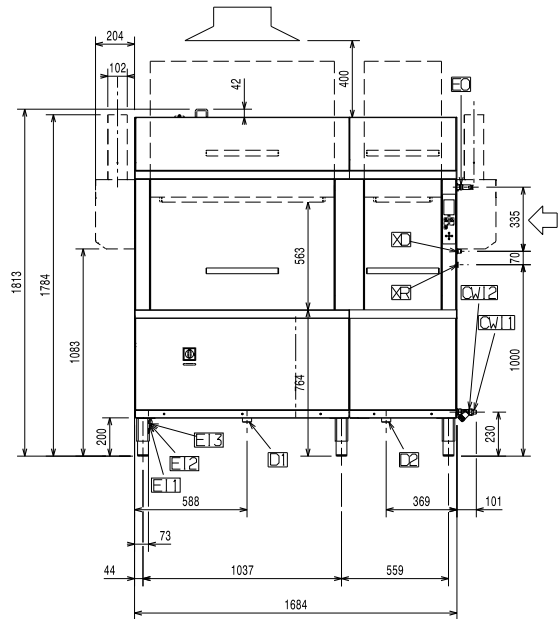
**Top**



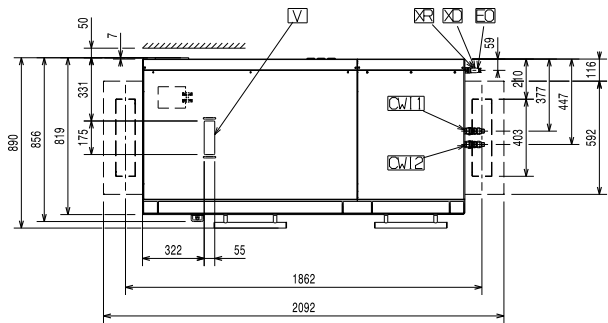
**Side**



**Front**

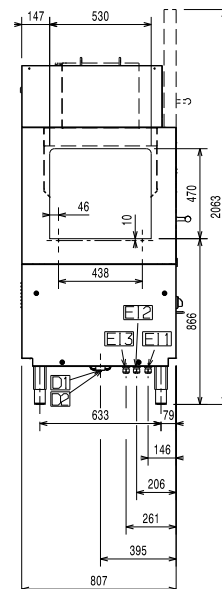


**Top**



- CWI** = Cold Water inlet
- D** = Drain
- EI** = Electrical connection

**Side**

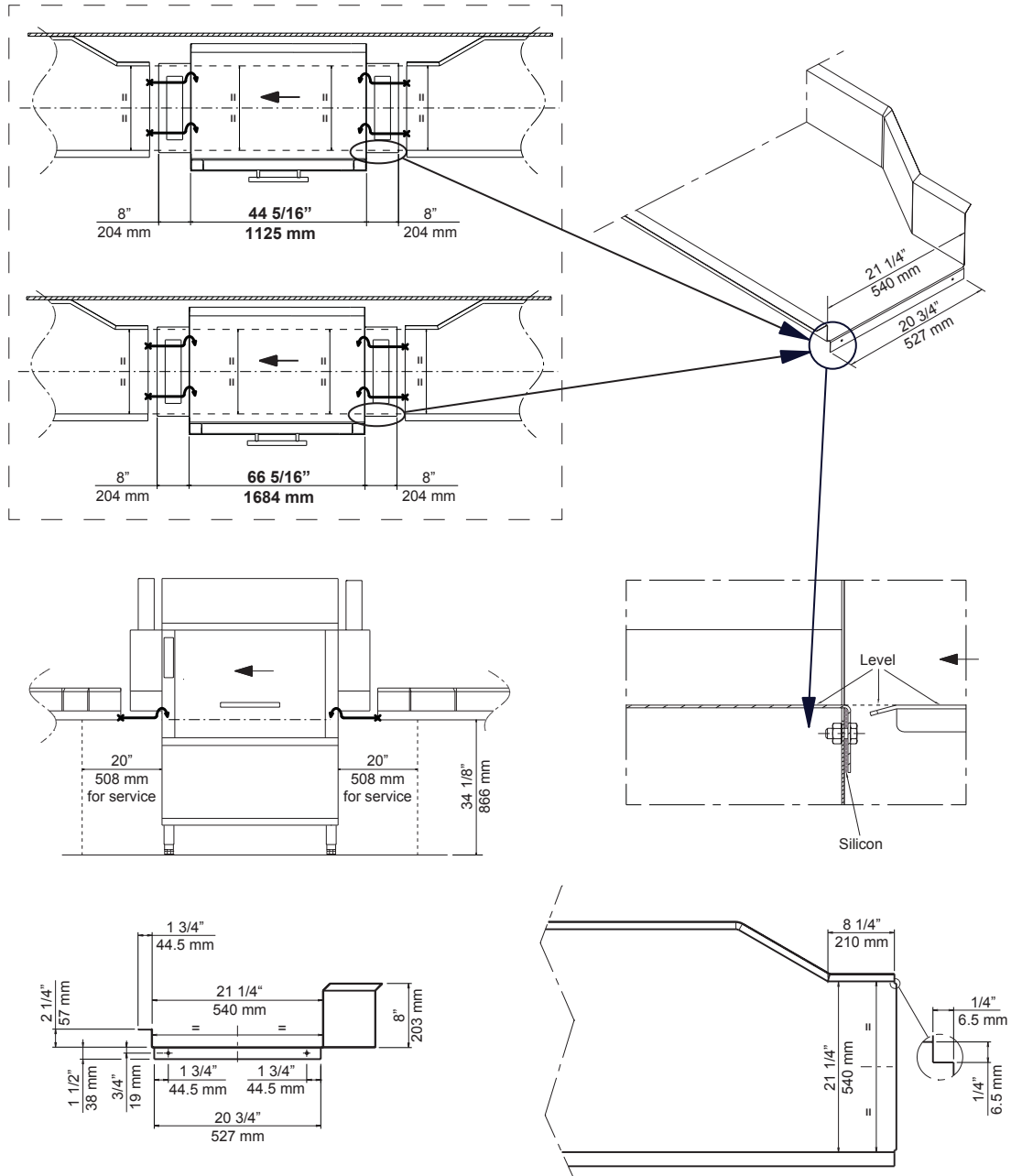




Electrolux

# Multi Tank Rack Type Dishwasher with Energy Saving Device

## Recommended table connection



All tables must be connected to the warewashing units according to local regulations and industry standards which may differ from the recommendations herein suggested. Electrolux Professional is not liable for any failure in complying with local design standards.

59566C100



Multi Tank Rack Type Dishwasher with Energy Saving Device  
The company reserves the right to make modifications to the products without prior notice. All information correct at time of printing.

2013.03.20