



Electrolux

Multi Tank Rack Type Dishwasher with Atmospheric Boiler

ITEM # _____

MODEL # _____

NAME # _____

SIS # _____

AIA # _____



Electrolux

Multi Tank Rack Type Dishwasher with Atmospheric Boiler



Multi Tank Rack Type Dishwasher with Atmospheric Boiler

534054 (ECRT250RB) Multi Tank Rack Type Dishwasher with atmospheric boiler, 250 racks/hour. Right to Left - 400V

534055 (ECRT250LB) Multi Tank Rack Type Dishwasher with atmospheric boiler, 250 racks/hour. Left to Right - 400V

Short Form Specification

Item No. _____

Unit to be Electrolux multi tank rack type dishwasher. Electrical characteristics to be 400V three phase operation. Unit to operate from ____ left to right or ____ right to left. Unit to feature atmospheric built-in boiler system with built-in rinse booster pump thus guaranteeing rinse pressure during rinse cycle. Unit to have two conveyor speeds which can be selected from the control panel by the operator, 250 racks/hour or 180 racks/hour. Maximum water consumption at 250 racks/hour of only 310 lt/hr. Unit to feature large heat and noise insulated front counter balanced door for easy access of internal components. Powerful wash pump and specially designed wash spray arms to guarantee cleaning. Unit to feature as standard end of day self cleaning cycle. Drain of water from the machine can be done through the control panel. Large deep drawn 100 liter wash tank.

Main Features

- Built-in hot water boiler.
- Atmospheric boiler system with air break.
- Built in rinse water booster pump guarantees constant rinse pressure.
- Speed of conveyor can be set through the control panel by the operator. 180 racks/hr or 250 racks/hr.
- Built-in drain valve in the tank, allows automatic dump and fill without any interruption of the washing process.
- Separate pre-wash tank ensures that the pre-wash water temperature remains constantly below 40°C to scrape and pre-wash effectively.
- Large counter balanced inspection door allows unrestricted all round access to the wash and rinse area. Door is insulated with injected foam. This adds strength as well as reduces noise and heat loss.
- Large filters sloping towards the front to the smaller pressed filter box for quick removal. Filters feature holes smaller than the concave ant-block wash nozzles so large food cannot enter and block the wash system.
- Adjustable feet for full access underneath the machine for cleaning.
- Push button self cleaning cycle of the wash and rinse zones for ease of "end of day" cleaning.
- Wash chamber without internal pipes and therefore no hidden dirt traps.
- Self draining wash pumps provide maximum hygiene with no smells and all wash and rinse zones drain automatically at the push of a button.
- Powerful 1.0 kW wash pump.
- Low water consumption. At 250 racks per hour, the machine uses only 310 lt/hr.
- Autostart/stop ensures that the machine runs only when a rack is passing through it. This saves water and reduces energy consumption.
- Deep drawn pressed 100 liters wash tank with fully rounded corners, sloped towards the drain to prevent dirt build up provides fast drainage in only a few minutes. Pressed wash tank with no welded points offer a guaranteed water tight solution.
- Dishwasher structure is held together with a solid stainless steel tube sub-frame to provide long term sturdiness.
- All main components made in heavy duty anti-corrosive 304 type Stainless steel: tanks, panels, wash & rinse arms and caps, doors, front, handle, side panels and rack transportation system.
- Wash and rinse arms can be easily removed for cleaning.
- IPX5 water protection.
- Electronic control panel features large display for reading of wash and rinse temperatures.
- Machine predisposed for external detergent and rinse aid connections.

Optional Accessories

- Kit end limit switch for rack type PNC 864138

APPROVAL: _____



Electrolux

Multi Tank Rack Type Dishwasher with Atmospheric Boiler

Electric

Supply voltage:

534054(ECRT250RB) 400 V/3 ph/50 Hz

534055(ECRT250LB) 400 V/3 ph/50 Hz

Dishwasher requires only one electrical service connection. Please refer to the information below for Amp requirements.

Total Amp Load: 72.2A

Total Installed Power: 45.5 kW

Water:

Inlet Water supply pressure:

534054(ECRT250RB) 22 - 102 psi (1.5 - 7 bar)

534055(ECRT250LB) 22 - 102 psi (1.5 - 7 bar)

Inlet Cold Water Supply

Temperature: 10-55 °C

Inlet Water supply hardness: 7-14 °fH

Incoming Cold Water line size: G 3/4"

Cold Water consumption: 310 liters/hr, adjustable on site

Pre wash temperature: <40 °C

Pre wash tank size: 45 lt

Pre wash pump power: 1/2 hp (0,37 kW)

Wash Temperature: 55-65 °C

Wash tank size: 100 liters

Wash pump power: 2 1/2 hp (1.0 kW)

Wash tank heating elements: 16 kW

Rinse pump power: 1/2 hp (0.28 kW)

Final Rinse Temperature: 80-90 °C

Hot water booster capacity: 12 liters

Boiler heating elements: 27 kW

Drain line size: 1"1/2

Key Information:

Productivity racks per hour (fast speed): 250 racks/4500 dishes, adjustable on site from 280 racks/5040 dishes to 90 racks/1620 dishes

Productivity racks per hour (slow speed): 180 racks / 3240 dishes, adjustable on site from 280 racks/5040 dishes to 90 racks/1620 dishes

Table to Table connection: 1684 mm

Number of tanks: 2

Height with door open: 2063 mm

Charging hole size (width): 530 mm

Charging hole size (height): 470 mm

External dimensions, Height: 1813 mm

External dimensions, Width: 1684 mm

External dimensions, Depth: 890 mm

Net weight: 893 lbs (405 kg)

Shipping weight: 470 kg

Shipping height: 2060 mm

Shipping width: 2370 mm

Shipping depth: 1035 mm

Shipping volume: 5.05 m³

Noise level: <70 dBA

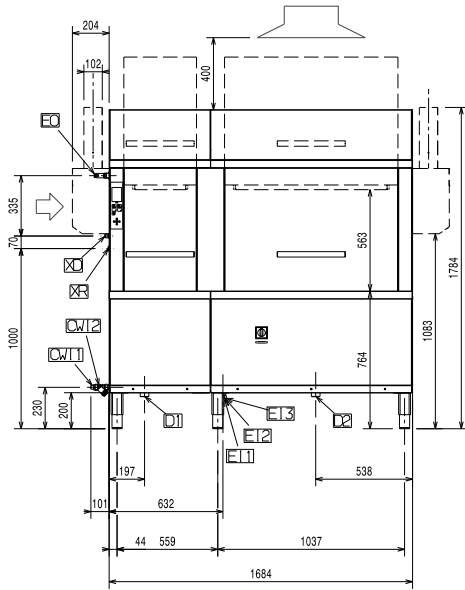
Unit predisposed to accept external detergent dispensers, detergent probes and rinse aid dispensers.



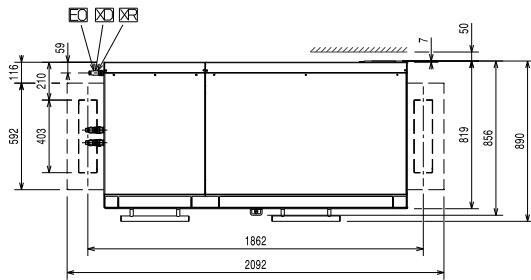
Electrolux

Multi Tank Rack Type Dishwasher with Atmospheric Boiler

Front

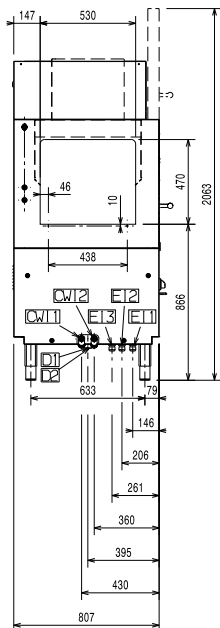


Top

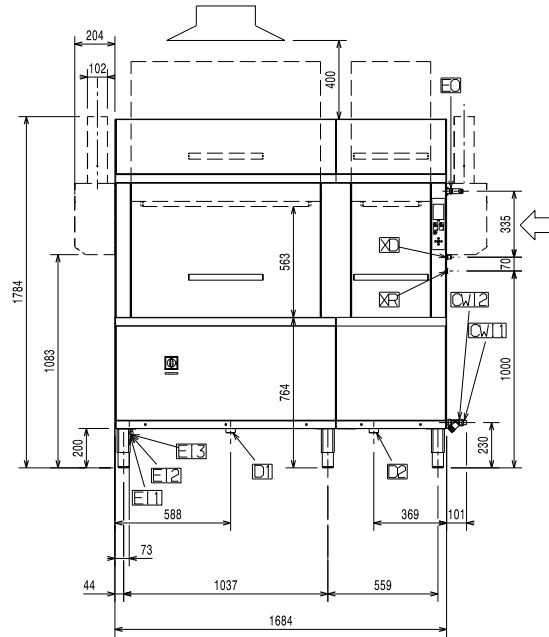


- CWI** = Cold Water inlet
- D** = Drain
- EI** = Electrical connection

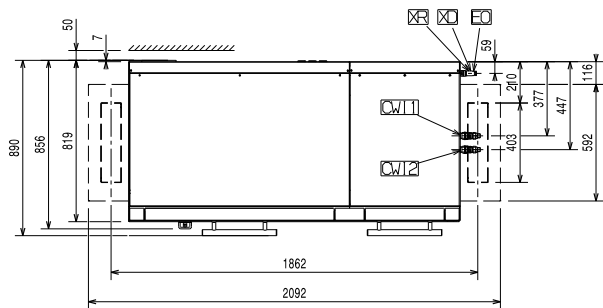
Side



Front

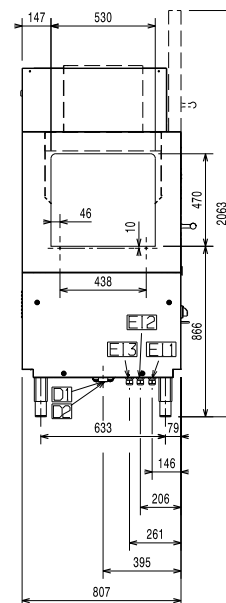


Top



- CWI** = Cold Water inlet
- D** = Drain
- EI** = Electrical connection

Side

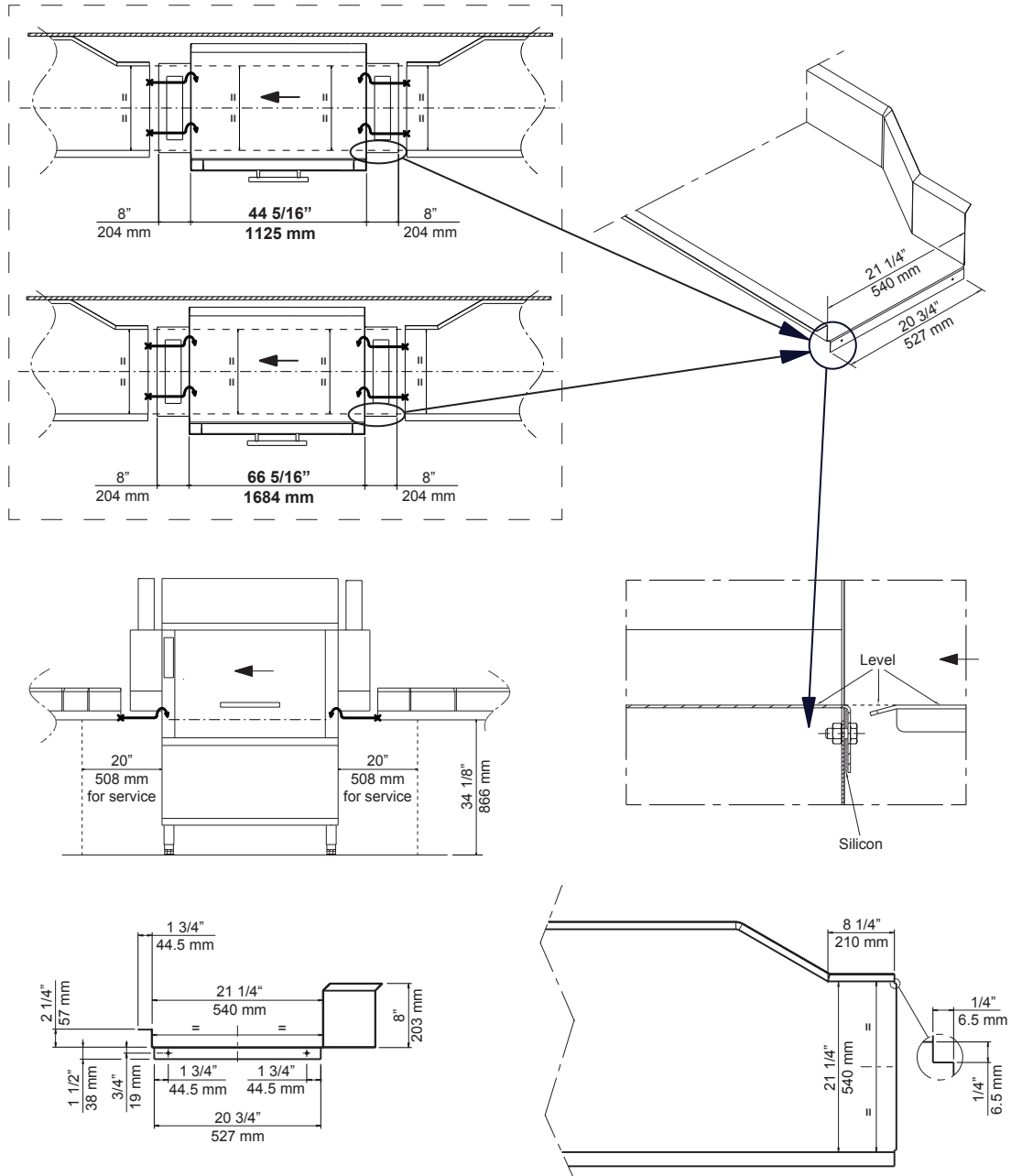




Electrolux

Multi Tank Rack Type Dishwasher with Atmospheric Boiler

Recommended table connection



All tables must be connected to the warewashing units according to local regulations and industry standards which may differ from the recommendations herein suggested. Electrolux Professional is not liable for any failure in complying with local design standards.

59566C100



Multi Tank Rack Type Dishwasher with Atmospheric Boiler
The company reserves the right to make modifications to the products without prior notice. All information correct at time of printing.

2013.03.20