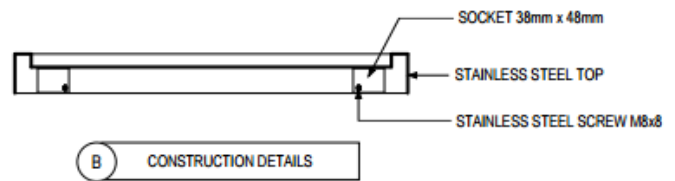
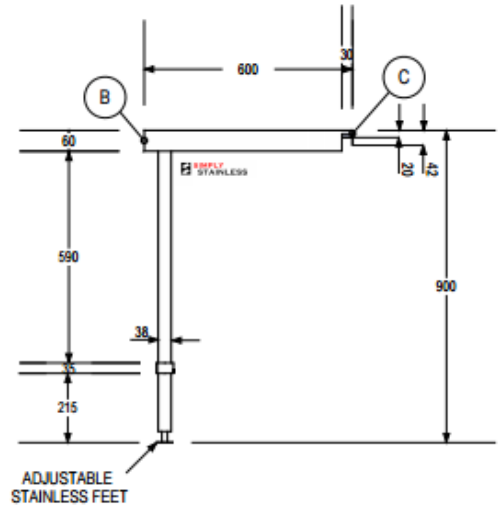




SIMPLY STAINLESS

www.simplystainless.com

Modular sinks tables and shelves



SPECIFICATION	
Tops	1.2mm gauge, high quality stainless steel, no. 4 finish
Core	1.2mm stainless steel top hat stiffening channel
Frames	38mm round stainless steel tube, satin polished, machined collars, adjustable stainless disc feet

37	DISHWASH ENTRY/EXIT BENCH	
	Product Code	Dimensions
	37.6.0600	600mm x 600mm x 900mm