

Models:

SPPS-126L-P2-240
 SPPS-126R-P2-415
 SPPS-126L-P2-240
 SPPS-126R-P2-415

Code explanation:

SPPS = Standard Product Power Soak
 126 = Overall length (inches)
 X = L – Left to right operation
 = R – Right to left operation
 P2 = P200 control system
 Y = 240 – 240V electrical connection
 = 415 – 415V electrical connection

GENERAL SPECIFICATION

- 2mm 304 stainless steel construction throughout all tanks, drain boards and splashbacks.
- Low profile wash jets every 150mm of wash tank.
- Uniform wash action throughout entire volume of wash tank.
- Stainless steel self-draining pump housing and impeller.
- The heater is located in the wash tank along the rear wall under the perforated intake guard.
- 2330-watt 240v model
- 7000-watt heater 415v model.
- The factory preset value for the wash tank water temperature is 46°C and can be field-modified +/- 5° C
- Powered utensil basket optional.
- Watermarked ½" faucet assemblies.
- Watermarked ½" pre-rinse spray assemblies.
- Rear exit stainless steel ball valve drains for 100% drainage.
- Motor horsepower is proportional to the size of the tank.
- Modular design allows for quick and easy access to motor pump and all major components
- Average flow rate per wash jet is approximately 150 LPM.
- Wash tank supported by 32x32x1.2 304 stainless steel legs and adjustable feet.
- All wetted parts of the pump assembly are stainless steel.
- Continuous heavy duty (TEFC) motors (high service factor) are provided with all pump assemblies.
- Complies with Australian Electrical requirements AS NZS 60335.1, AS 3000, AS 3760. Complies with Sydney Water trade waste guidelines.

OPTIONAL EQUIPMENT

- Sheet pan racking system.
- Gastronomer racking system.
- Pizza pan racking system.
- Powered utensil basket.
- Integrated chemical dispenser.
- Drain connection kit.
- Pan drying rack.
- Removable chemical shelf.
- JBZ mechanical joint.

SYSTEM CONFIGURATION

Overall Size:	3195mm long x 865mm deep x 1200 high.
Soiled End:	175mm wide x 780mm FB x 30mm deep.
Scrape Tank:	305mm wide x 567mm FB x 100mm deep.
Wash Tank:	1220mm wide x 728mm FB x 530mm deep.
Rinse sink:	460mm wide x 728mm FB x 350mm deep.
Sanitiser Sink:	505mm wide x 728mm FB x 350mm deep.
Drain End:	530mm wide x 780mm FB x 30mm deep.
Power Supply:	415v 16A three phase. 240v 20A single phase.
Controller:	Model P200 solid state electronic.
Pump:	1.5 kW. (2 Hp.)
Plumbing:	1 only swivel faucet. 1 only overhead pre rinse spray head.

Due to continuous product research and development, the information contained herein is subject to change without notification.

Models:

SPPS-126L-P2-240

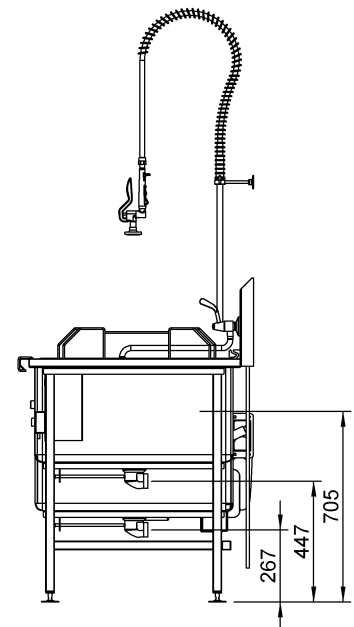
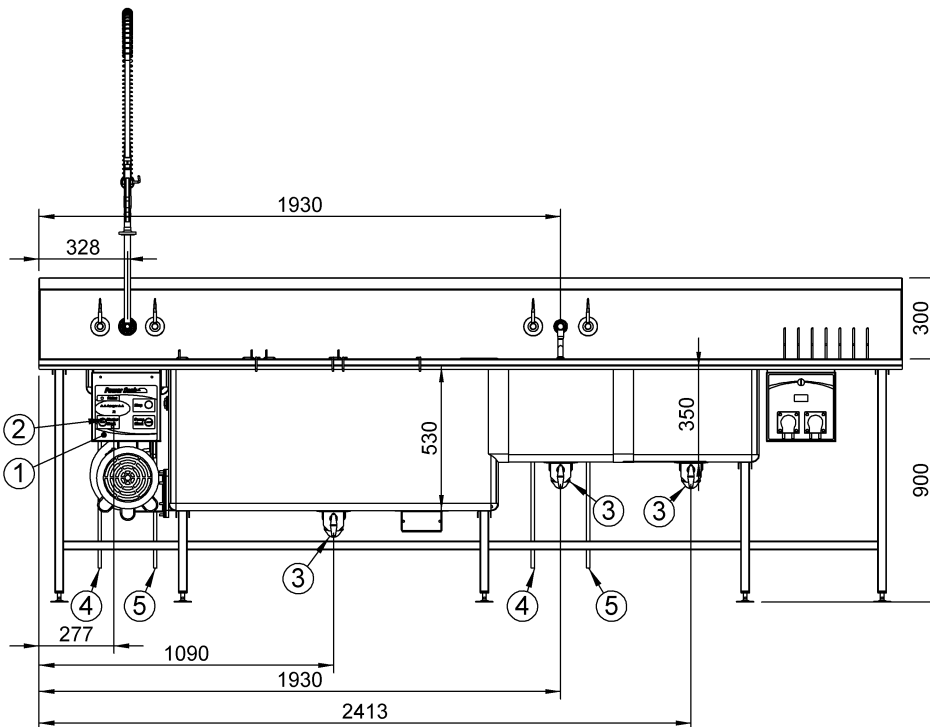
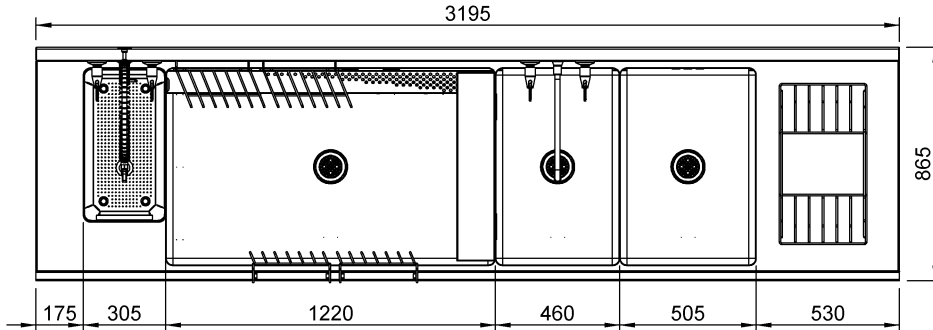
SPPS-126R-P2-415

SPPS-126L-P2-240

SPPS-126R-P2-415

Code explanation:

- SPPS = Standard Product Power Soak
- 126 = Overall length (inches)
- X = L – Left to right operation
= R – Right to left operation
- P2 = P200 control system
- Y = 240 – 240V electrical connection
= 415 – 415V electrical connection



- | | |
|--------------------------|---|
| 1 Electrical Connection: | Single Phase 240v 20amp 50Hz
3 Phase 415V + N + E 16A 50Hz |
| 2 Waste Connection: | 2" BSP Male |
| 3 Waste Connection: | 1½" BSP Male |
| 4 Water Connection Hot: | ½" Copper |
| 5 Water Connection Cold: | ½" Copper |

Due to continuous product research and development, the information contained herein is subject to change without notification.