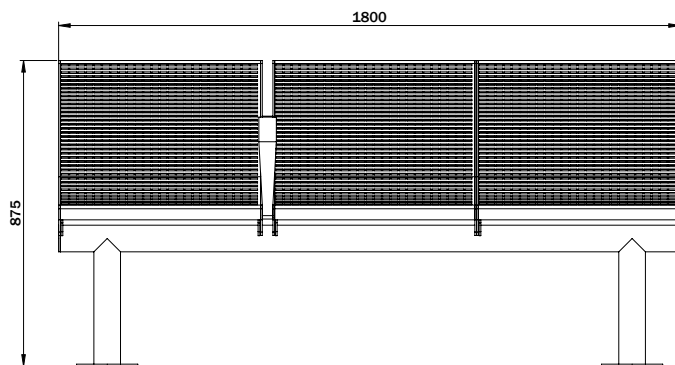
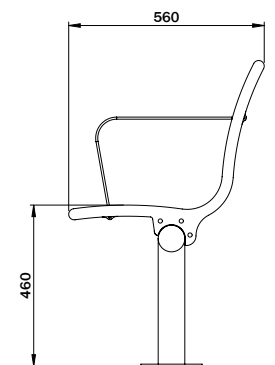


STANDARD PRODUCT STATION SEAT



FRONT VIEW



SIDE VIEW

Product Description:

The Station Seat is a stainless steel seat specifically designed to suit the commercial rail environment. The seat is manufactured from stainless steel wire mesh seat inserts which are modular and allow for multiple seat length combinations. These seat inserts also have the option to be electro polished. A hot dip galvanised mild steel frame with baseplates supports the seating elements.

Options include seat length, number of armrests, sub-surface or bolt to surface baseplates, and powder coated seat frame. Should you require special modifications to suit your specification, please do not hesitate to contact us.

P: 1300 557 654

W: stoddartinfrastucture.com.au

E: info@stoddartinfrastucture.com.au

Copyright Tom Stoddart Pty Ltd. All rights reserved.

Revised 11/01/2019

TOWN&PARK



STODDART[®]
INFRASTRUCTURE

STATION SEAT

Models:

Code: SPTP.STS.v.ww.xxx.yyyy.zz

SPTP = Stoddart Products
STS = Station Seat

v S = Stainless Steel

ww SP = Surface Post
SS = Sub Surface

xxx ARx = x no. of arm rests

yyyy 1800 = 1800mm long (Standard)
*Length available @ 600mm increments

zz EP = Electro Polished Stainless Steel

Construction:

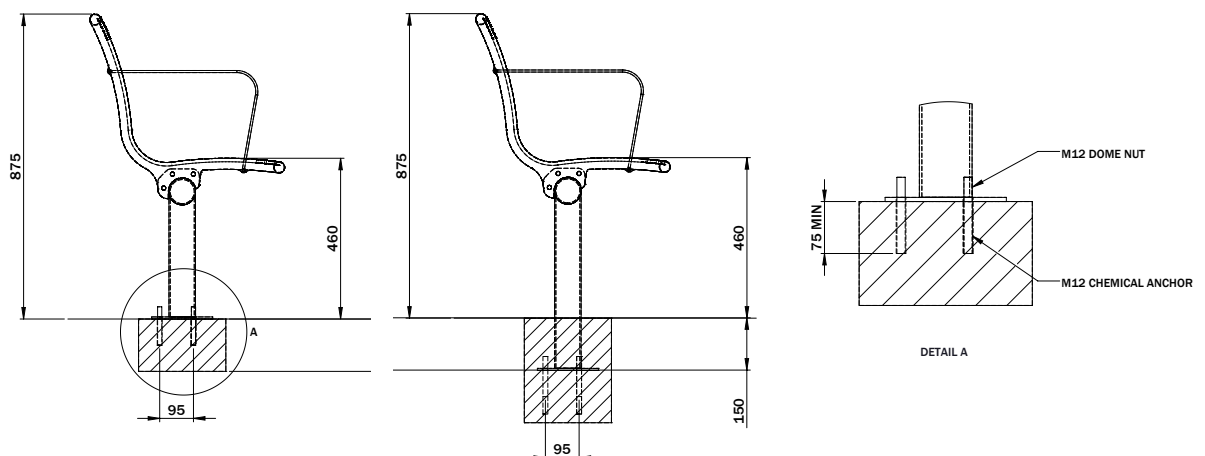
- 304 Stainless steel wire mesh seat frames, seat profile, and armrests
- Mild steel HDG support frames and baseplates
- 304 stainless steel fasteners

Example Specification Text:

Model Code: SPTP.STS.S.SP.AR1.1800.EP

Town and Park Station Seat with 304 stainless steel seat profile. The surface post mount seat frame manufactured from HDG mild steel. One armrest in 304 stainless steel. The seat is 1800mm long and the stainless steel is electro polished.

Install Details:



P: 1300 557 654

W: stoddartinfrastucture.com.au

E: info@stoddartinfrastucture.com.au

Copyright Tom Stoddart Pty Ltd. All rights reserved.

TOWN & PARK



STODDART[®]
INFRASTRUCTURE