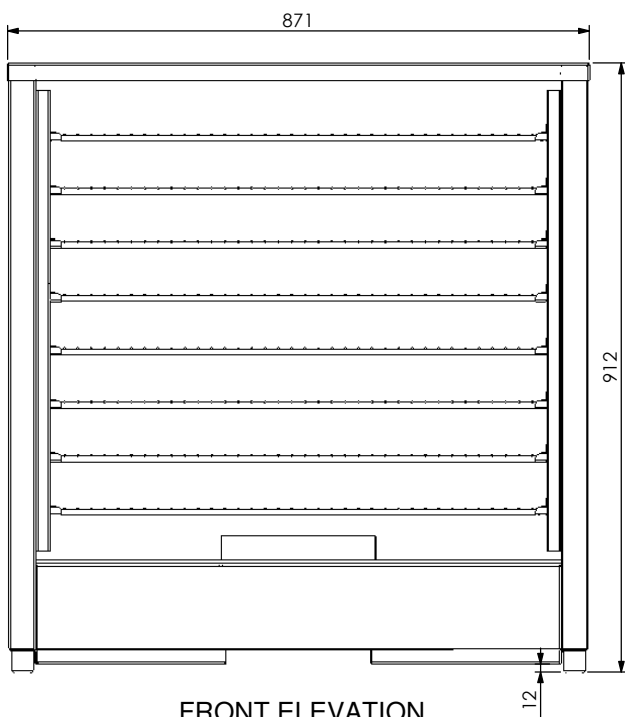
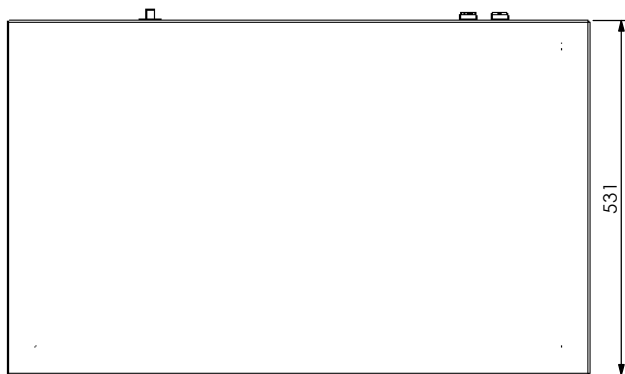


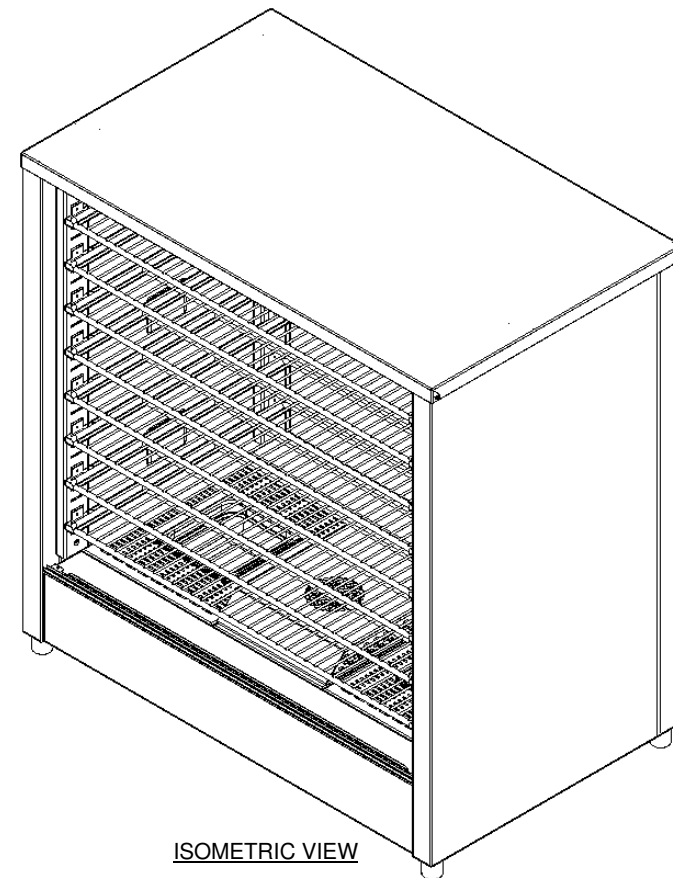
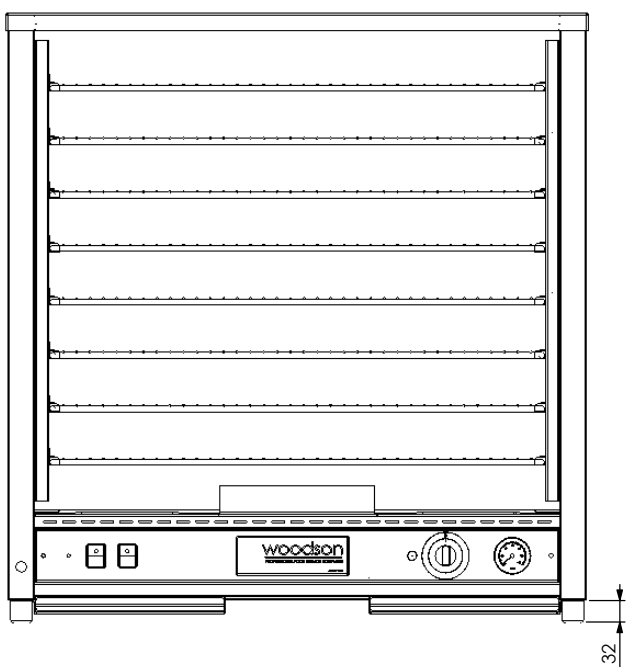
Product Details

Electrical Connection : Supply single phase
 : 240v, 8.4amps, 2010w, 10amp plug & lead supplied
 : 1 element @ 1800w (240v)
 : 6 oven lights @ 30w (240v)
 : 1 fan @ 30w (240v)

Unit Controls : Knob for 120deg thermostat with dial thermometer
 : Switch for oven lights
 : Switch for fan/element



FRONT ELEVATION



ISOMETRIC VIEW

Note: This is a view of the generic body.
 To see each option of the W-PIP200 refer to page 2.

REV/VER.	REVISED BY	DATE	REVISION DESCRIPTION	STATUS
B2	W Preece	19/07/2019	Added 8 racks to Pre-assembly as standard	For Manufacture
B1	N Wooler	18/09/2014	Material has changed from 430 BA to 430 N4. All part revisions have changed. Unit was previously known as SP-WPIP200.	For Manufacture
A1	N Wooler	12/04/2013	Unit changed to suit all options. New file name structure implemented. Refer to the drawing sheet of each part for details.	For Manufacture
D	C Johnson	10/09/2007	Element part no. updated to the 1800W element.	Revised
C	N Wooler	18/01/2007	Functione lights replaced with square oven lights. Fixed glass & sliding glass door heights have changed due to ally extrusion being added.	Revised
B	N Wooler	15/01/2006	Unit made deeper front to back to allow for bakers shelves.	Revised
A	N Wooler	01/03/2005	Original design.	Revised



www.stoddart.com.au

DRAWN: N Wooler				UNLESS OTHERWISE SPECIFIED: DIMENSIONS ARE IN MILLIMETERS		PART No: W-PIP200-PA B2	
APPV'D:				DATE: 1/03/2005		DESCRIPTION: Woodson;Pie Display;200 Capacity;Pre Assembly	
Weight:				THICKNESS:		DWG No: W-PIP200-PA-d01 B2	
Surface Area:				FINISH:		Dwg. Issue: 1	
DO NOT SCALE DRAWING				This drawing remains the property of Tom Stoddart Pty Ltd ABN 16 009 690 251 & cannot be reproduced without prior permission A3			