

Stoddart Toilet Suite Service Instructions

Purpose & Scope:	These instructions define how Stoddart Cisterns (Parts MPPL.CCS (Std Cistern) & MPPL.CCD (Disabled Cistern)) are serviced & provides adjustable valve settings, to retain compliance with certification & regulatory requirements.
-----------------------------	---

Identify Cistern Model

The Cistern Label contains Valve Setting information for both Std & Disabled Cisterns.

An additional Silver-Grey Model ID Label, ID's correct Cistern e.g.

MPPL.CCS = Std Cistern

MPPL.CCD = Disabled Cistern

Both cisterns use Inlet Water Valve Geberit Model 222.100.1

Std cisterns use Outlet Valve Geberit Model 272.400.21.1

Disabled cisterns use Outlet Valve Caroma Model 750085


**IMPORTANT INFORMATION RE:
INLET & OUTLET VALVES USED IN
STODDART TOILET SUITES**

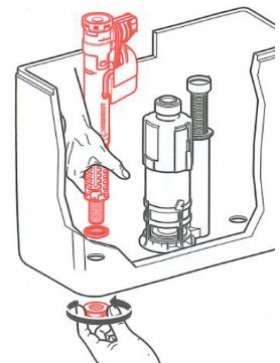
TO RETAIN RATING, WM & REGULATORY COMPLIANCE
REPLACEMENT VALVES USED IN THESE CISTERNS
MUST BE SAME OR EQUIVALENT MODEL.

DEPENDING ON CISTERN MODEL IDENTIFICATION
SET TO THE FOLLOWING SETTINGS
REFER ASSOCIATED LABEL FOR MODEL ID

General - Installing Valves in tank

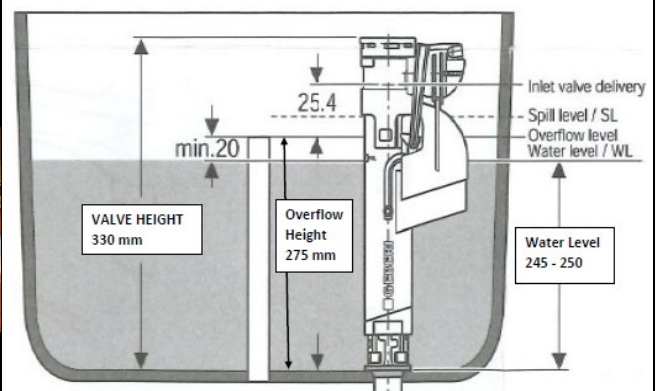
ALL REPLACEMENT VALVES will require adjustment
Before Installation in Tank

Access to Cistern Models SPPL.TP.CC1 & 2 allow full access to cistern with front cistern cover removed


Water Inlet Valve:

Both cisterns use the same WM Inlet valve (Geberit Model 222.100.1) which is set to an **Overall Height of 330mm, From Tank Base (FTB)**/image.

Pre-Install
Adjustment Height 110mm &
replace Blue Clip Lock after
adjustment


Outlet Valve(s): Overflow Settings

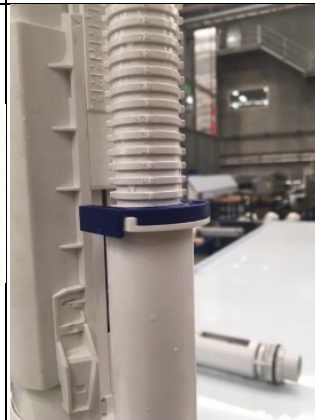
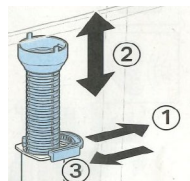
Both outlet valves require **Overflow Level Set to 275mm FTB.**

Both valves have an overflow pipe included as part of the valve base & a separate Twist & Lock Cartridge

(Volume & height settings).

Geberit Model 272.400.21.1). Set Overflow Adjustment / Clip lock on **18** per LH Photo

Caroma Model 750085) Set Overflow Adjustment
Clip lock to **275** per RH Photo



Stoddart Toilet Suite Service Instructions
Installing Outlet Valve Base/Cartridge:

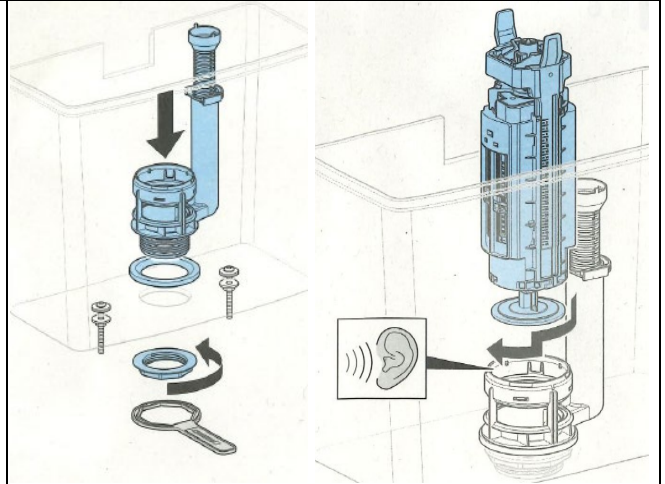
When overflow height is set & locked, the valve/base can be installed.

Note:

Cartridge install per RH Image

Reverse to remove

The Caroma Cartridge can be installed in **15°** degree increments to allow correct alignment square with push buttons.
(Half Flush LH Side button)


Outlet Valve(s): Volume settings

Both valves require the volume settings adjusted for the full & half flush.

Note the setting no's & method are different for each valve.

The **Std cistern outlet valve**
(Geberit Model 272.400.21.1)

Set per LH Photo.

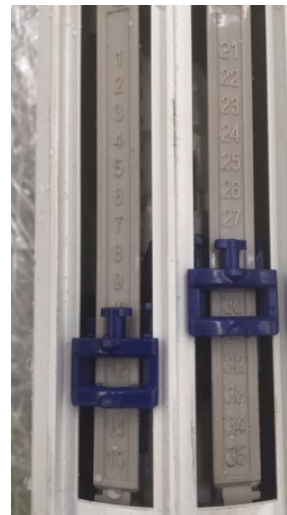
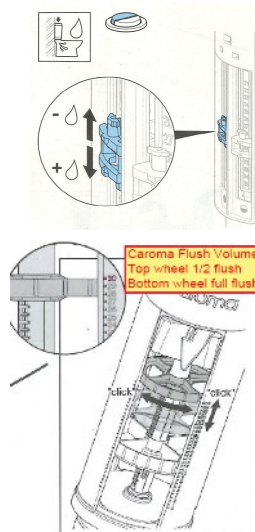
Full Flush **12** & Half Flush **30**

The **Disabled cistern outlet valve**
(Caroma Model 750085)

Set per RH Photo.

TOP of Adjust Wheels = Full Flush **0** &
Half Flush **13**

All settings are also shown on the settings label

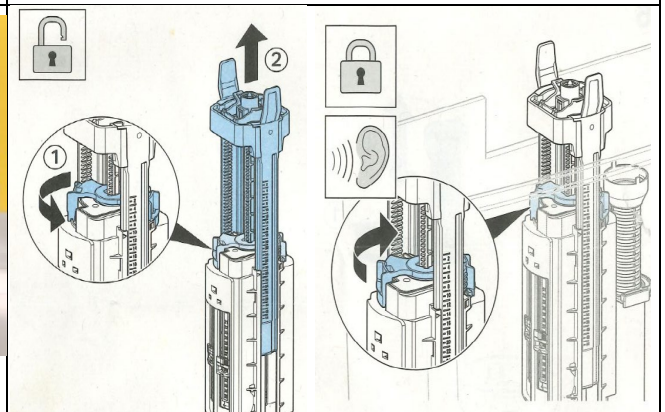
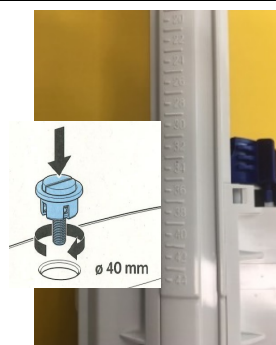

STD Cistern Only
Setting the Outlet Valve Height

Unclip Lock of Outlet Valve Cartridge &
Extend Button Body

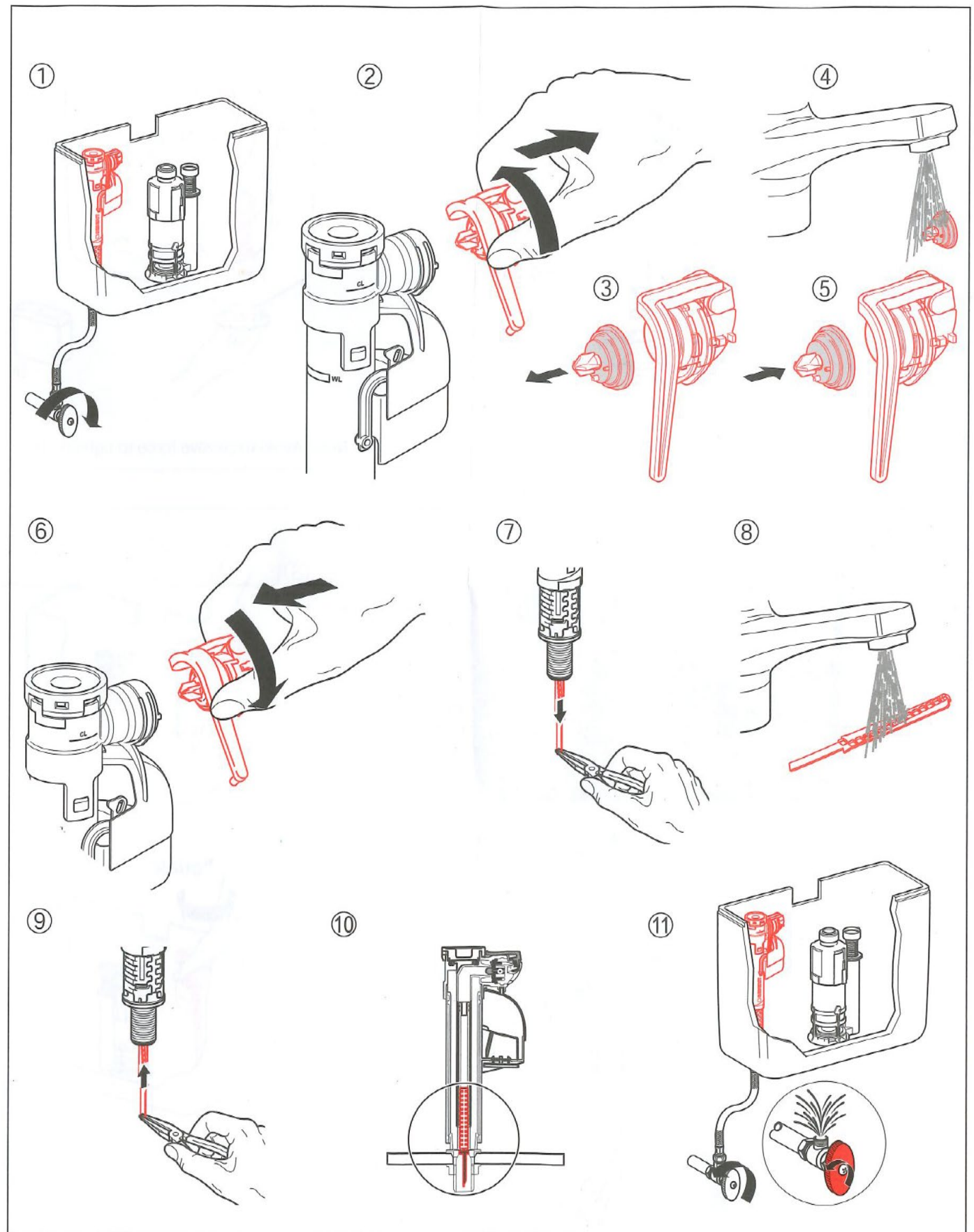
Set Height to **37** per Photo

Relock Cartridge height adjustment,
Before re installing

When Fixing Push Button to Cistern
Lid - Screw thread until flush with lid



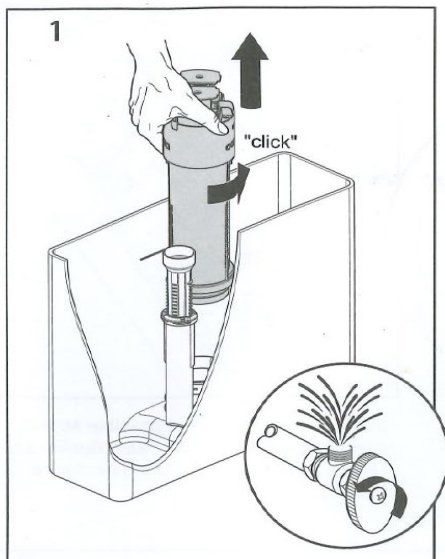
Following pages detail valve servicing instructions

**Geberit Inlet Valve Model ID - 222.100.1 – Service**

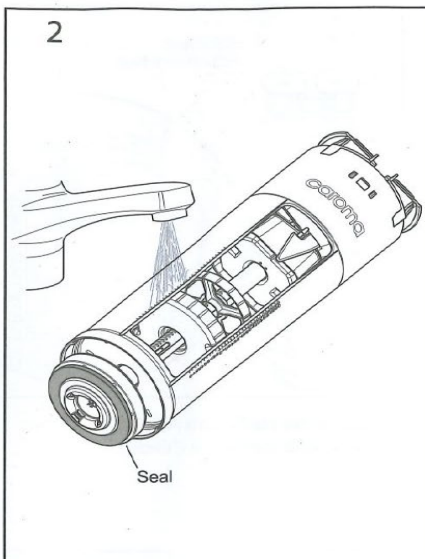


Stoddart Toilet Suite Service Instructions

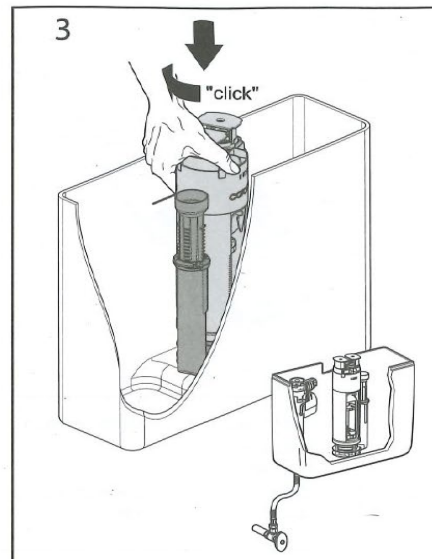
Caroma Outlet Valve: - Service Repair



Remove lid, turn off mains water and flush cistern empty. Carefully remove Valve Cartridge by rotating it ("click") anti-clockwise and then lifting.



Wash seal to remove any dirt and inspect for damage. If necessary remove seal and replace (Spare Part Kit 750017).



Replace Valve Cartridge and lock into Valve Base by rotating ("Click") clockwise.

Replace cistern lid. Turn mains water back on, wait for cistern to fill and test both buttons to ensure they activate the outlet valve.

Service Requirements

- Servicing is only required in instances where outlet valve operation is found to be faulty.

Troubleshooting Guide

- | | |
|---------------------|---|
| • If valve leaks | - Inspect seal for damage & replace if necessary. |
| • If short flushing | - Check clearance between button strikers & button platforms on the outlet valve. Adjust as necessary |
| • Other issues | - Consult Plumber or contact Stoddart |