

Floor Troughs - Tile Insert

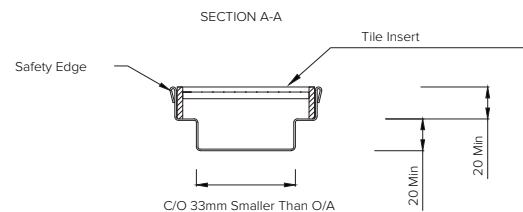
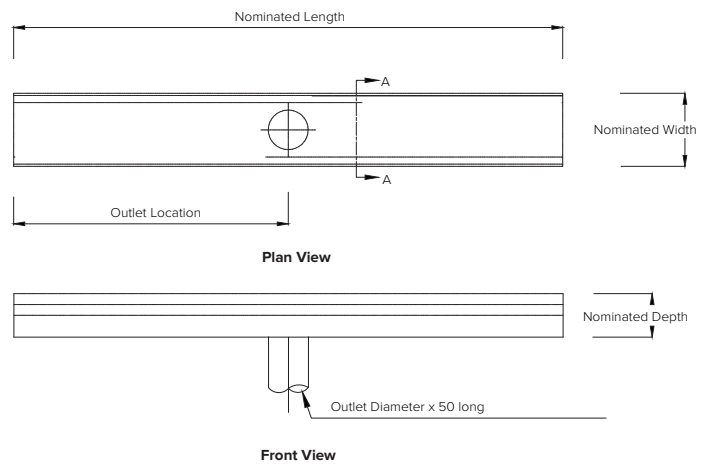
Model: SPFT.TI.www.xxx.y

SPFT = Stoddart Plumbing Floor Trough
 TI = Tile insert
 www = Nominated Length
 xxx = Nominated Width
 y = E = End Waste
 = C = Center Waste

eg.: for specification and ordering quote
 Code: SPFT.TI.1200.300.E

Features and Benefits:

- Ideal for a modern finish in domestic applications
- Centre waste troughs <1800mm long can be made flat with cross break to provide some drainage
- Brackets allow fixing to floor & setting level prior to pouring concrete floor (check trench depth)
- Optional fastening points can be ordered for securing grates into trough (recommended for wider troughs and security applications)
- Suitable for an extensive range of tiles to suit your décor (tiles not supplied by Stoddart)
- 316 grade stainless steel option available for optimum corrosion resistance
- Troughs are made to order in Australia & meet Australian Standards



Specifications:

- Construction: 1.2mm 304 grade stainless steel construction, no.4 satin finish.
- Waste Connection: SS waste pipe for fitting into a 100mm outlet. Waste has a removable mesh basket and a fixed mesh strainer.
- Unit Fixing: Brackets are fixed in position in trench. Trough is adjusted so top is level & at FFL prior to pouring floor.



Due to continuous product research and development, the information contained herein is subject to change without notice.

Revision: A - 21/06/2021

www.stoddart.com.au
 www.stoddart.co.nz