



Cooling Tank

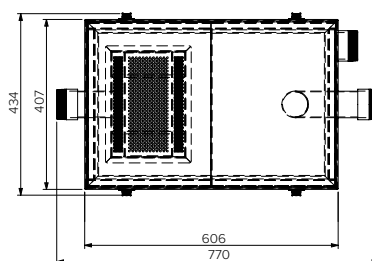
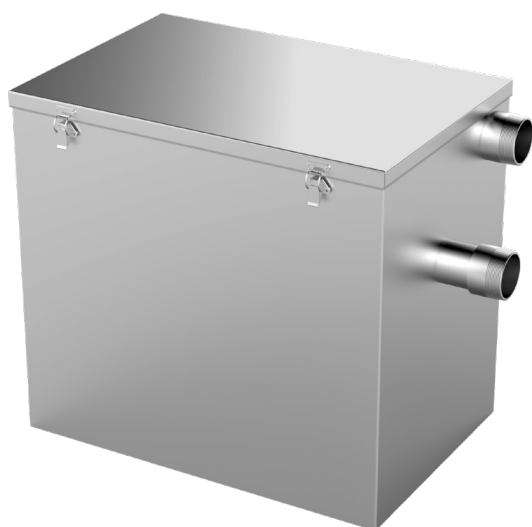
Model: SPPL.CT.FM.70L

SPPL = Stoddart Plumbing Product
 CT = Cooling Tank
 FM = Floor Mounted
 70L = 70 Litre

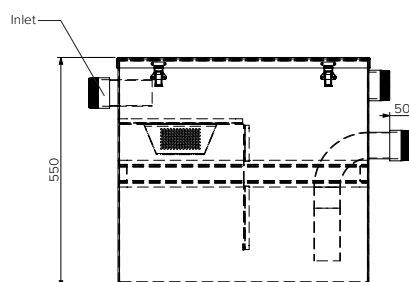
eg.: for specification and ordering quote
 Code: SPPL.CT.FM.70L

Features and Benefits:

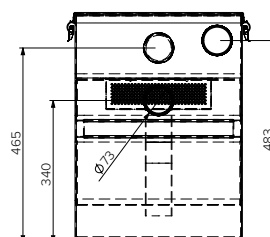
- Ideal plumbing protection for commercial kitchens, schools, infirmaries, medical and veterinary practices
- Cooling tank works to bring hot waste to an adequate temperature, eliminating the risk of damaging plumbing
- Strainer to prevent solid waste from entering plumbing
- Fully welded, seamless, stainless steel unit with welded stainless steel inlet and outlet for strength and longevity
- Sealed rim to provide water tightness
- Custom sizes available upon request



Plan View



Front View



End View

Specifications:

Construction: 1.5mm 304 grade stainless steel construction, no.4 satin finish.
 Inlet Connection: 65mm diameter BSP, stainless steel, supplied
 Outlet Connection: 65mm diameter BSP, stainless steel, supplied

Model No.	L x D x H (mm)
SPPL.CT.FM.70L	770 x 407 x 550



Due to continuous product research and development, the information contained herein is subject to change without notice.

Revision: A - 22/06/2021

www.stoddart.com.au
www.stoddart.co.nz



Proudly Manufactured
in Australia