

DRINKING FOUNTAINS

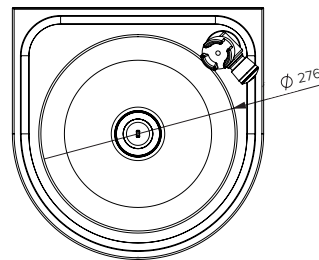
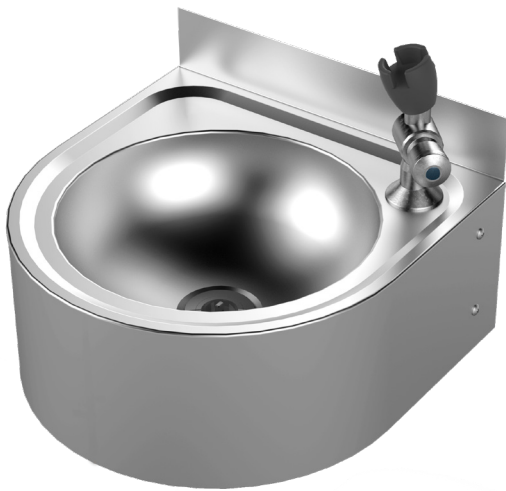
Round - Wall Mounted

Model: SPPL.DF.R.WM.xxx.yy

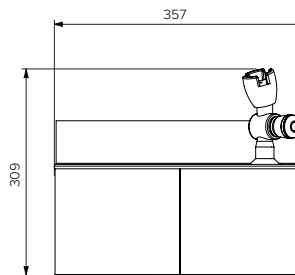
SPPL = Stoddart Plumbing Product
 DF = Drinking Fountain
 R = Round
 WM = Wall Mounted
 xxx = 300 = 300mm splashback (optional)
 yy = BF = Bottle Filler
 eg.: for specification and ordering quote
 Code: SPPL.DF.R.WM.300.BF

Features and Benefits:

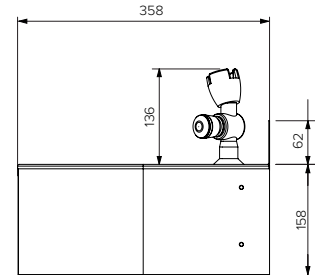
- Approved design drinking fountain for government schools
- Economical design makes this the affordable solution for schools and institutions
- Easy mount bracket system for quick installation
- No sharp edges ensuring safe use and cleaning
- WELS rated supplied bubbler for easy and efficient water access
- All optional tapware are WELS and Watermark approved



Plan View



Front View



End View

Specifications:

Construction: Fully welded 304 grade stainless steel construction, no.4 satin finish.
 Water Connection: Single 15mm (1/2" BSP)
 Waste Connection: 40mm waste connection
 Unit Fixing: The unit is supplied with a stainless steel wall mounting bracket with 8mm diameter fix 6mm stainless steel fixings.

Sold Separately

Tapware Options:



CMPL0876

Model No.	L x D x H (mm)
SPPL.DF.R.WM	357 x 358 x 309



Due to continuous product research and development, the information contained herein is subject to change without notice.
 Revision: A - 18/06/2021

www.stoddart.com.au
 www.stoddart.co.nz

