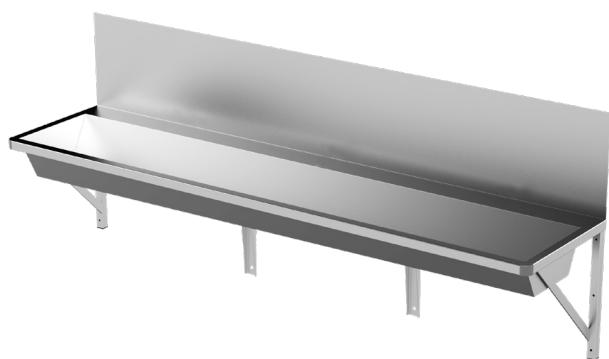


## Wall Mounted Wallsend Trough

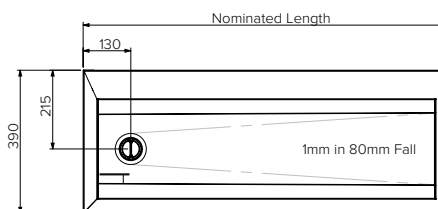
### Model: SPPL.WT.WE.x.yyy

SPPL = Stoddart Plumbing Product  
 WT = Wash Trough  
 WE = Wallsend Trough  
 x = L = Left Hand Waste  
 = R = Right Hand Waste  
 y = Nominated Length  
 eg.: for specification and ordering quote  
 Code: SPPL.WT.WE.L1000

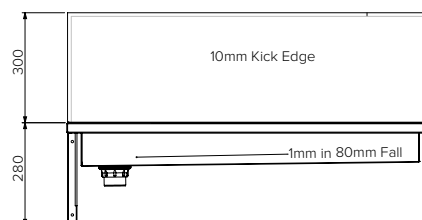


### Features and Benefits:

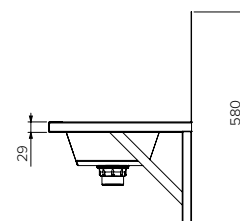
- Robust, hygienic & safe solution for educational & sporting applications
- Multipurpose, versatile trough allowing easy access
- Extra wide hob at rear for mounting tapware
- Blade splashback to eliminate splashing



Plan View



Front View



End View

### Specifications:

Construction: Fully welded seamless 304 grade 1.2 mm thick stainless steel construction, no.4 satin finish.  
 Waste Connection: 50mm, PVC waste supplied  
 Tap Locations: Tap holes are punched where required  
 Unit Fixing: The Trough is supplied with stainless steel wall mounting brackets

### Sold Separately

Tapware Options:



Model No.	L x D x H (mm)
SPPL.WT.WE.x.yyy	Nominated x 390 x 580



Proudly Manufactured in Australia

Due to continuous product research and development, the information contained herein is subject to change without notice.

Revision: A - 18/06/2021

www.stoddart.com.au  
 www.stoddart.co.nz