

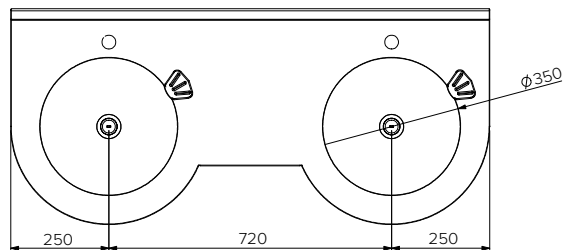
# Vanity Bench Secure Round - Access Compliant

**Model: SPPL.WB.VB.DA.x.yyyy**

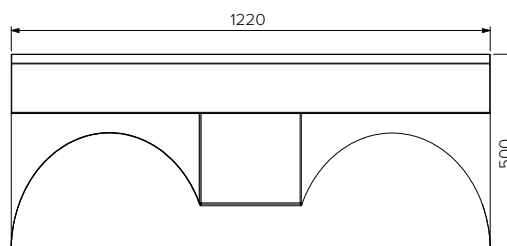
SPPL = Stoddart Plumbing Product  
 WB = Wash Basin  
 VB = Vanity Bench  
 DA = Disabled Access  
 x = No. of bowls (refer to table below)  
 yyyy = Nominated Length  
 eg.: for specification and ordering quote  
 Code: SPPL.WB.VB.DA.2.1800

**Features and Benefits:**

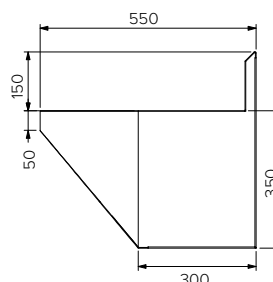
- Designed for access bathrooms in public amenities where vandalism can be a costly problem
- Semicircular shroud with rolled front edges provide user safety
- Vandal resistant, fully welded construction
- Radius front edge minimises risk of user injury
- Designed for access compliance
- All optional tapware are WELS and Watermark approved
- 316 grade variation is available as an optional extra



**Plan View**



**Front View**



**End View**

**Specifications:**

Construction: **Fully welded 2mm thick, 304 grade stainless steel construction, no.4 satin finish**

Water Connection: 15mm (1/2" BSP) with water pressure to suit selected tap (dependant on tapware or plumber)

Waste Connection: 40mm PVC waste supplied (trap by others)

Unit Fixing: The unit is supplied with a wall mounting brackets. Recommended fixing height from basin top to finished floor level is 800 - 830mm

Model No.	L x D x H (mm)	No. of Basins
SPPL.WB.VB.DA.2.1220	1220 x 550 x 500	2
SPPL.WB.VB.DA.3.2400	2400 x 550 x 500	3
Custom options available		



Due to continuous product research and development, the information contained herein is subject to change without notice.

Revision: A - 11/06/2021

www.stoddart.com.au  
 www.stoddart.co.nz