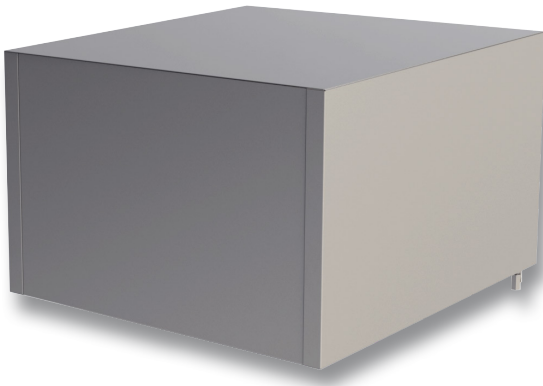


SPEH.CH.T3

Condensate Hood



The Culinaire range of kitchen exhaust hoods are designed and manufactured to comply with Appendix E (Normative) AS1668.2 2012. The kitchen exhaust hood airflow is calculated as per clause 3.4.3.A letter of Certification can be supplied to demonstrate that the construction complies to the standard.

- Culinaire hoods are manufactured from 1.2mm 304 grade stainless steel to ensure a rigid and robust product with optimum corrosion resistance.
- Stainless Steel condensate plate ensure captures condensate & directs it towards a fully welded capture gutter with drain points. Drain point can be plumbed to waste connection. Condensate plate is hinged to allow access for cleaning when required.
- The Culinaire design allows for large multi section hoods to be joined seamlessly to create continuous, large capture and containment zones. This feature can also provide an aesthetic benefit to the kitchen environment.
- Hoods can be built with or without an integrated make up air system on the front face. The provision of makeup air through the front face at low velocity improves the comfort of the kitchen environment for staff.
- Downlighting can be integrated into Baffle panel if required.

Standard Sizes:

L x W x H

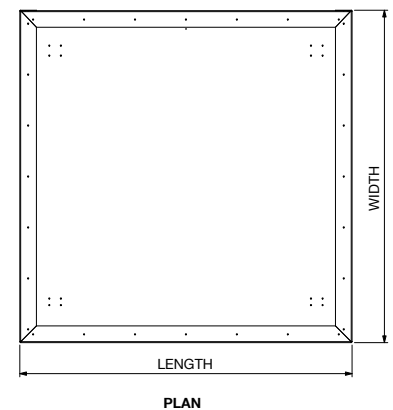
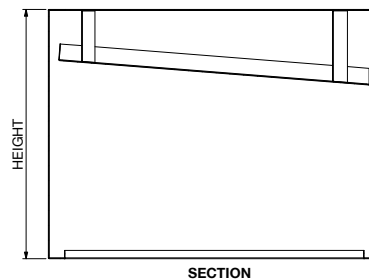
1350 x 1100 x 650

1100 x 1100 x 650

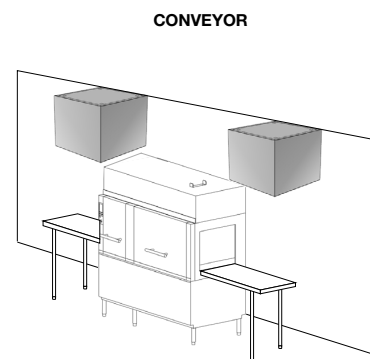
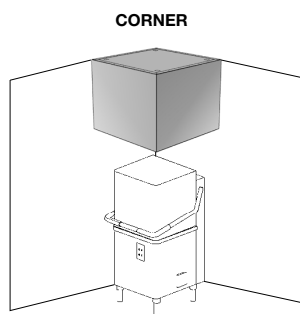
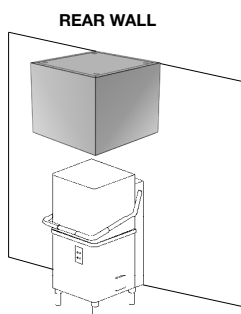
Custom Sizing:

Specify the size of the condensate hood, or forward details of your dishwashing area to our expert staff. They will size the condensate hood correctly, and nominate the correct air flows.

Dimensions:



Typical Installation:



Typical Specification Text:

Kitchen Exhaust Hood serving non grease producing equipment shall comply with the requirements of NCC 2015 and AS1668.2 2012. Constructed from 1.2 mm AISI 304 Satin finish. The hood shall be supplied complete with stainless steel condensate plate which drains to a gutter with accessible drain points. The size shall be as indicated in the drawings. Exhaust airflow rates will be as per AS1668.2 2012 Clause 3.4.3. Make-up air if required, will be supplied at low velocity through the front face of the canopy.

All Culinaire products are supplied with a 12 month parts and labour warranty as standard.

Due to continuous product research and development, the information contained herein is subject to change without notice.

Revision: 20/10/21

www.stoddart.com.au

www.stoddart.co.nz



Proudly Manufactured
in Australia

