



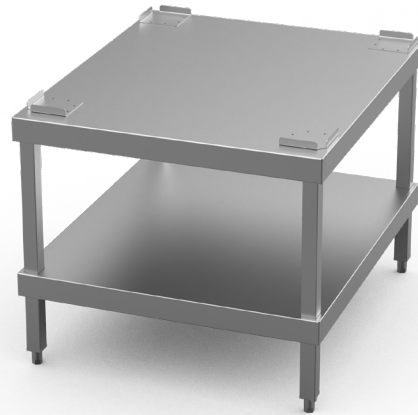
Specifications:

Model ST0605.ST
W x D x H (mm) 605 x 698 x 517
Weight - kg

Model ST0905.ST
W x D x H (mm) 905 x 698 x 517
Weight - kg

Model ST1305.ST
W x D x H (mm) 1305 x 698 x 517
Weight - kg

Model ST1700.ST
W x D x H (mm) 1700 x 698 x 517
Weight - kg



Product Information:

- Robust 304 grade stainless steel construction
- Flat packed, ready for easy assembly
- Undersshelf for added storage
- Sizes to suit the entire Trilogy range
- **24-months parts and labour warranty**

General Drawing:

