

Tilt Wall Cleaners Sink

Model: SPPL.CS.06.PG.xx

SPPL = Stoddart Plumbing Product

CS = Cleaners Sink

06 = Boxed Splashback

xx = FL = Front legs

eg.: for specification and ordering quote

Code: SPPL.CS.06.PG.FL



SPPL.CS.06.PG.FL
shown with
Optional Front Legs

Specifications:

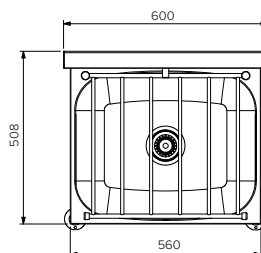
Construction: Pressed 304 grade bowl with 1.2mm 304 grade stainless splashback, no.4 satin finish

Waste Connection: 90mm supplied with basket waste

Unit Fixing: Unit is supplied with heavy duty, easy mount bracket. Optional front legs can be added at time of order. 600mm high Splashback with 50mm void for easy fitting of breaching piece behind, for walls with pipe work that cannot be recessed into. Recommended fixing height is 500-700mm from top of bowl to floor finished level. Legs are 650mm tall.

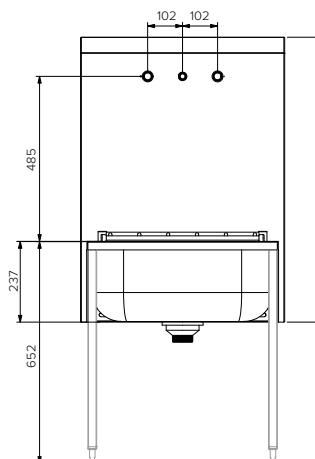
Features and Benefits:

- Safe cleaning solution for commercial buildings, where wall penetration is not an option
- Optional front legs can be ordered if unit is to be mounted on non-structural walls
- Welded stainless steel grate has six bars for stable support of buckets while filling and draining
- Highly polished, 44L capacity bowl is 235mm deep to reduce splashing
- Safe and durable hinges allowing grate to be lifted for access to bowl
- Sound suppression pad under base of bowl reduces noise
- Rolled edges for added safety
- 90mm waste comes with a waste basket for catching solids
- All optional tapware are WELS and Watermark approved

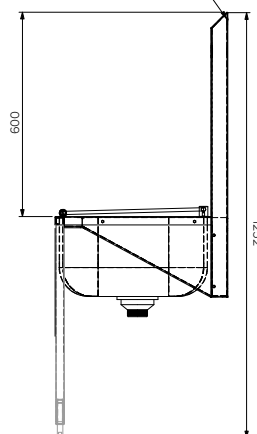


Plan View

Joggle Angle to be fixed to wall.
Splashback to hook over when fitting.



Front View



End View

Sold Separately

Tapware Options:



CMPL0969

Model No.	L x D x H (mm)
SPPL.CS.06.PG.FL	600 x 508 x 837 (1252 with legs)



Due to continuous product research and development, the information contained herein is subject to change without notice.

Revision: A2-23/05/2023

www.stoddart.com.au

www.stoddart.co.nz



Proudly Manufactured
in Australia