

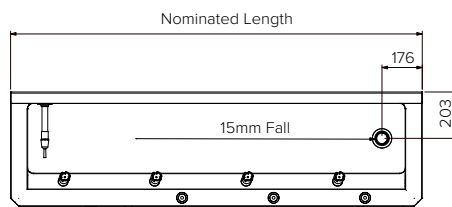
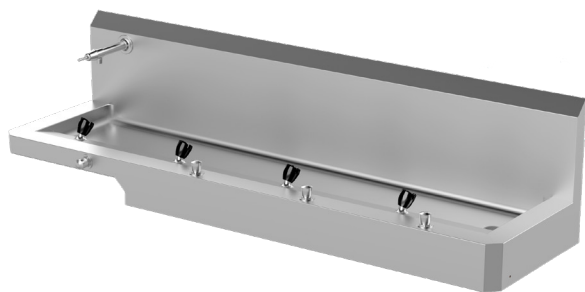
Disabled Drinking Trough

Model: SPPL.DT.D.PG.xxxx.yy

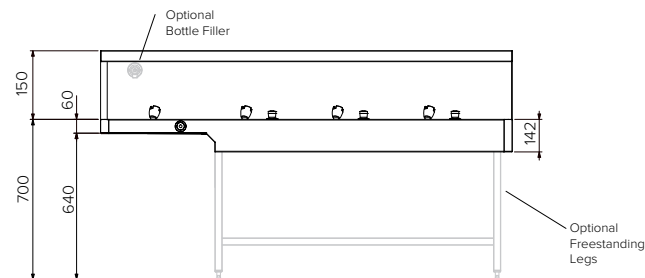
SPPL = Stoddart Plumbing Product
 DT = Drink Trough
 D = Disabled
 PG = Pre-plumbed
 xxxx = Nominated Length
 yy = FS - Freestanding
 eg.: for specification and ordering quote
 Code: SPPL.DT.D.PG.2000

Features and Benefits:

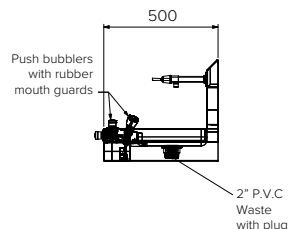
- Designed for schools and sports clubs
- Radius corners for easy cleaning, hygiene and safety
- Concealed plumbing and fixings for vandal resistance
- Bubblers are fitted with unique mouth guards to protect teeth from damage
- Disabled access compliant
- Optional bottle filler requires 300mm splashback



Plan View



Front View



End View

Specifications:

Construction: Fully welded seamless 304 grade 1.2mm thick stainless steel construction, no.4 satin finish.
 Water Connection: 1/2" BSP water connection required
 Waste Connection: 50mm, PVC waste supplied, trap is not included
 Unit Fixing: The trough is standard with stainless steel wall mounting brackets with 11mm fixing holes and stainless steel Z clips for splashback.

Sold Separately

Tapware Options:



CMPL.0931

Model No.	L x D x H (mm)
SPPL.DT.D.PG.xxxx	Nominated x 500 x 292
SPPL.DT.D.PG.xxxx.FS	Nominated x 500 x 850



Due to continuous product research and development, the information contained herein is subject to change without notice.
 Revision: A - 7/06/2023

www.stoddart.com.au
 www.stoddart.co.nz

