

## Bain Marie Drop-In - A-Frame Gantry

**CH.BM.D.GA.4**



### Product Information:

- Unit designed to be installed into a new or existing bench top cut-out. Complete with, A-Frame 304 stainless steel gantry. (Gantry welded to bench top)
- Wet or dry operation (temperature varies greatly when run dry, should not be left unattended for long periods of time)
- Temperature regulation via digital control, designed to hold product between 65°C - 90°C.
- Independent controls for bainie marie, hot cupboard and gantry
- A-frame gantry fitted with Quartz IR heat lamps
- Air insulated, double skinned tank for energy efficient heating
- Gantry constructed from 304 grade stainless steel with a No.4 finish and 6mm toughened glass end
- Manual fill and manual empty, valve operated waste
- 1/1 GN sized well, fits pans up to 150mm deep (sold separately). Supplied with pan dividers
- **12-month parts and labour warranty**

### Specifications:

<b>Model</b>	CH.BM.D.GA.4
<b>W x D x H (mm)</b>	1477 x 647 x 760
<b>Cutout Dimensions (mm)</b>	1455 x 625
<b>Total Connected Load</b>	3.9kW
<b>Electrical Connection</b>	1Ø+N+E 240VAC / 50Hz (Onsite connection)
<b>Water Connection</b>	G 1/2" BSP
<b>Waste Connection</b>	1 1/4" BSP

### Optional Extras:

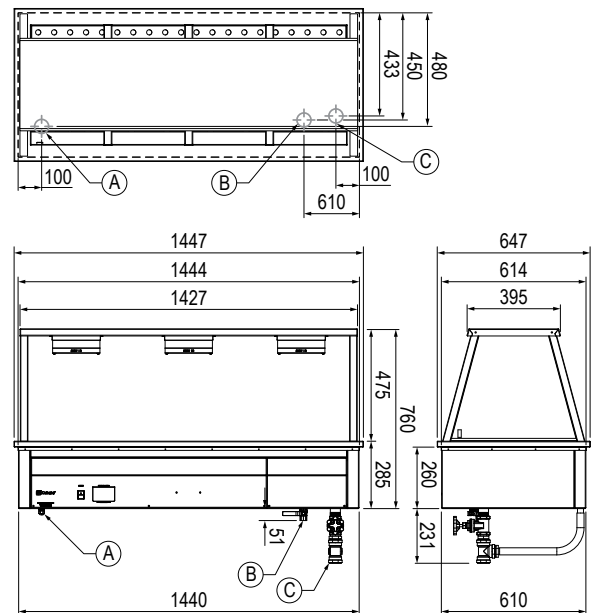
<b>Radius Well</b>	
Add <b>R</b> to code after the <b>I</b>	CH.BM.DR.GA.4
<b>Front Glass</b>	CA.GAF.4
<b>Sliding Doors</b>	CA.GAD.4
<b>Sneeze Guards</b>	CA.GAS.4
<b>Note:</b> Optional extras must be selected at time of order	

### Accessories:

<b>Large Pan Dividers</b> (To suit large GN pans)	CA.PXL
<b>Cross Pan Dividers</b> (To suit smaller GN pans)	CA.PXS

### Legend:

<b>A</b>	Electrical Connection
<b>B</b>	Water Connection
<b>C</b>	Waste Connection



Due to continuous product research and development, the information contained herein is subject to change without notice.

Revision: A - 09/11/2023 - 01

[www.stoddart.com.au](http://www.stoddart.com.au)

[www.stoddart.co.nz](http://www.stoddart.co.nz)

