

Bain Marie Drop-In - 2 Tier Gantry

CH.BM.D.GDB.5



Product Information:

- Unit designed to be installed into a new or existing bench top cut-out. Complete with, 2-Tier 304 stainless steel gantry. (Gantry welded to bench top)
- Wet or dry operation (temperature varies greatly when run dry, should not be left unattended for long periods of time)
- Temperature regulation via digital control, designed to hold product between 65°C - 90°C.
- Independent controls for bainie marie, hot cupboard and gantry
- 2-Tier overhead gantry fitted with Quartz IR heat lamps on the underside of the bottom shelf
- Air insulated, double skinned tank for energy efficient heating
- Robust 304 grade stainless steel construction
- Manual fill and manual empty, valve operated waste
- 1/1 GN sized well, fits pans up to 150mm deep (sold separately). Supplied with pan dividers
- **12-month parts and labour warranty**

Specifications:

Model	CH.BM.D.GDB.5
W x D x H (mm)	1817 x 647 x 1035
Cutout Dimensions (mm)	1795 x 625
Total Connected Load	4.95kW
Electrical Connection	3Ø+N+E 400VAC / 50Hz (Onsite connection)
Water Connection	G 1/2" BSP
Waste Connection	1 1/4" BSP

Optional Extras:

Radius Well	
Add R to code after the I	CH.BM.DR.GDB.5

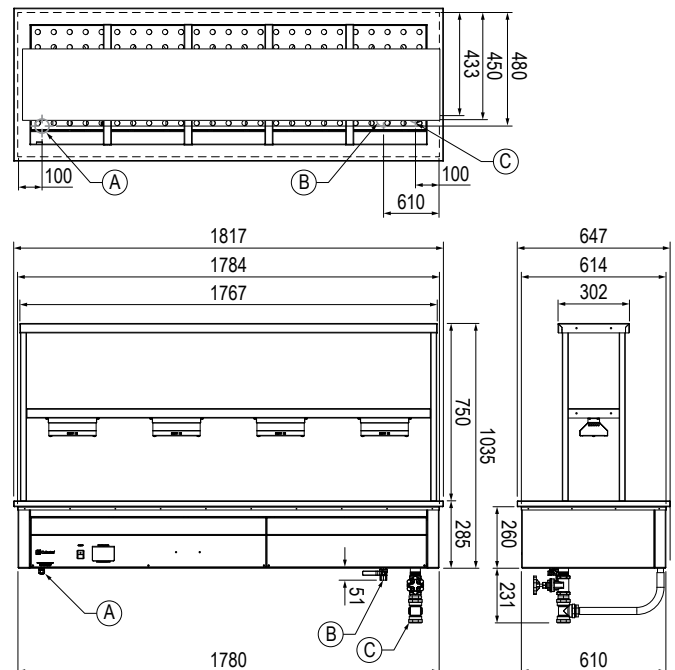
Note: Optional extras must be selected at time of order

Accessories:

Large Pan Dividers (To suit large GN pans)	CA.PXL
Cross Pan Dividers (To suit smaller GN pans)	CA.PXS

Legend:

A	Electrical Connection
B	Water Connection
C	Waste Connection



Due to continuous product research and development, the information contained herein is subject to change without notice.
Revision: A - 09/11/2023 - 01

www.stoddart.com.au
www.stoddart.co.nz

