

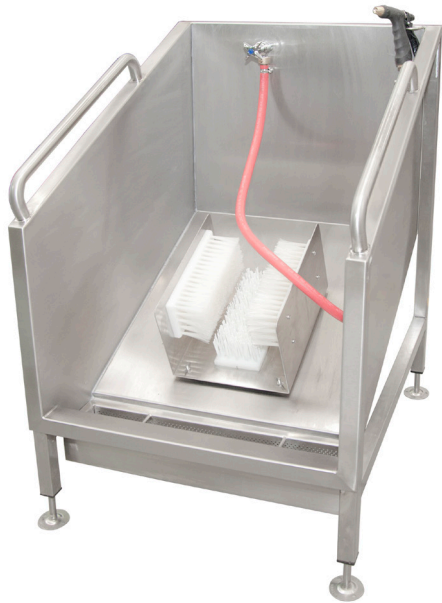


Boot Wash Station

Model: SPPL.WT.BWS.xx

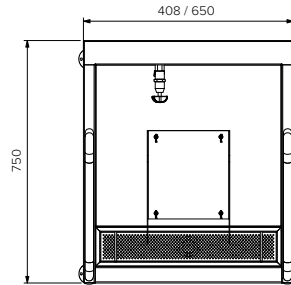
SPPL = Stoddart Plumbing Product
 WT = Wash Trough
 BWS = Boot Wash Station
 xx = 01 = 408mm long unit
 = 02 = 650mm long unit

eg.: for specification and ordering quote
 Code: SPPL.WT.BWS.01

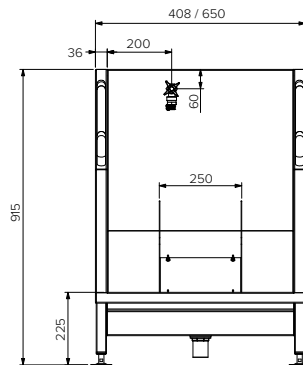


Features and Benefits:

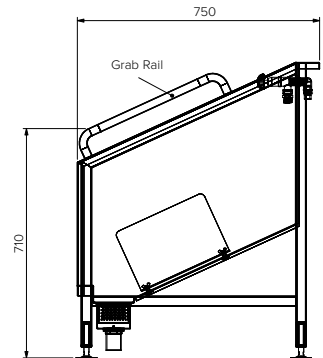
- Reduce the risk of transferring dirt (coal, soil, animal excrement or contaminant) from work areas
- Health and safety requirement for mines
- Quarantine protection requirement for animal kennels, abattoirs, hatcheries, agricultural and farming areas
- Also ideal for Hospitals and food preparation facilities and any other environment where safety and hygiene is essential
- Brushes are set at an optimum angle for easy cleaning and robust hand spray to wash stubborn dirt
- Large collection basket to prevent solids from loading up waste system
- Collection basket positioned at front for safe and easy access
- Solid grab rails to assist user safety
- Complete stainless steel construction for long life and superior hygiene
- Two models available: Save space with the 01 - 408mm long unit or upsize to the 02 - 650mm long unit



Plan View



Front View



End View

Specifications:

Construction: 1.5mm 304 grade stainless steel construction in no.4 satin finish.
 Water Connection: Single 15mm (1/2" BSP) cold or tempered supply. Watermarked wall tap, hose and hand nozzle are supplied with unit.
 Waste Connection: 40mm waste.
 Unit Fixing: Height adjustable feet can be fixed to ground.

Model No.	L x D x H (mm)
SPPL.WT.BWS.01	408 x 750 x 915
SPPL.WT.BWS.02	650 x 750 x 915



Proudly Manufactured in Australia

Due to continuous product research and development, the information contained herein is subject to change without notice.

Revision: B - 10/05/2024

www.stoddart.com.au
 www.stoddart.co.nz