

**HEBDEN BRIDGE LOCAL HISTORY
SOCIETY NEWSLETTER**
www.hebdenbridgehistory.org.uk

Summer 2015



Society visits to Toad Lane Museum

Wednesday 2 September 2015

Saturday 19 September 2015

See page 3

**Published by the
Hebden Bridge Local History Society
The Birchcliffe Centre
Birchcliffe Road
Hebden Bridge HX7 8DG**

President: Barbara Attack
Secretary: Diana Monahan
secretary@hebdenbridgehistory.org.uk
Phone 01422 845982

The society has sections for those with a particular interest in local prehistory, family history and folklore.

Contacts

Prehistory	David Shepherd Email avid.shepher@gmail.com
Family History	Barbara Attack phone 01422 842105 Email ataxjb@btinternet.com
Folklore	John Billingsley Email johnbillingsley@jubilee10.freemove.co.uk

Subscriptions now due – see back cover

Welcome to the Summer Newsletter. Here you'll find details of the lectures for 2015-2016, news from the Family History, Folklore and Prehistory sections, forthcoming exhibitions, activities and events. If you'd like to write a short article on something historic for the Spring 2016 issue, please send it to the Secretary by 1 March 2016.

Contents

Society contact details	inside front cover
Contents and welcome	1
Annual General Meetings	2
Visit to Toad Lane Museum	3
Society Publications	4
Archive and Library opening dates	6
Lecture Programme	7
Prehistory Section	23
Folklore Section	25
Family History Section	26
Exhibitions	28
History Events	inside back cover

**Receive your Newsletter by email and help keep costs
(and therefore subs) down**

Email membership@hebdenbridgehistory.org.uk

with your name and membership number and
while we're thinking about subs....see the back page

Committee Nominations and Items for the Agenda

Local History AGM 28th October 2015

Literary and Scientific AGM 4th November 2015

Any items/proposals for discussion at the AGM and any nominations for Officers or committee members should reach the secretary by 7th October 2015.

Mrs. Diana Monahan, 7 New Road, Hebden Bridge, HX7 8AD
Email: secretary@hebdenbridgehistory.org.uk

If you wish to nominate someone for the committee and they are willing to stand, please complete and send the following information:

I wish to nominate _____

For the position of:

President/Secretary/Treasurer/Librarian/committee member in the Hebden Bridge Local History Society or the Hebden Bridge Literary and Scientific Society (delete as required)

Proposer _____

Membership number _____

Seconder _____

Membership number _____

You can copy this page if you prefer

Society visits to Toad Lane Museum

The Society is planning two group visits on Wednesday 2nd and Saturday 19th September at 2.30 pm. The cost is £4 including tea/coffee and the visit will last about an hour and a half. People may also want to make a day of it and visit Touchstones Art Gallery and Museum.

To book, contact the Secretary (see inside cover). Give your preferred date, numbers (visitors welcome) and whether you can offer seats in a car or would like a lift. Please inform the secretary if you are unable to go, so your place can be offered to people on the waiting list and so the society does not have to pay for empty places. Payment can be made to the treasurer or on the day.



Local History Society Publications

Society publications can be ordered via our website (www.hebdenbridgehistory.org.uk), where there is a detailed description of each book. Copies can also be obtained from The Bookcase or at Society lectures.

Pennine Valley: a History of Upper Calderdale.

Edited by Bernard Jennings. Originally published 1992. Reprinted with corrections 2011. Paperback. 224 pages.

£14.99

Pennine Perspectives: Aspects of the History of Midgley.

Edited by Ian Bailey, David Cant, Alan Petford and Nigel Smith. Published by Midgley Books, 2007. Hardback. 346 pages.

£18.00

A Century of Change: 100 years of Hebden Bridge and District. Text by Colin Spencer. Edited by Diana Monahan. 1999. Hardback. 200 pages.

£15.95

The Diaries of Cornelius Ashworth 1782-1816. Edited by Richard Davies, Alan Petford and Janet Senior. Published 2011. Hardback. 368 pages.

£19.00

Hebden Bridge Town Centre Trail. 2008. 27 pages.

£2.00

Occasional Publications Series

These titles are short print runs and some are close to going out of print - so buy now if you want the complete series!

No.1 Midgley Probate Records: Household and Family in the Upper Calder Valley 1531-1731. Edited by Ian Bailey and Alan Petford. Reprint of 2007 edition by Midgley Books. Published 2012. 116 pages. **£9.99**

No.2 City in the Hills: Dawson City and the Building of the Walshaw Dean Reservoirs. By Corinne McDonald and Ann Kilbey. Published 2012. 52 pages. **£11.99**

No.3 Going to War: People of the Calder Valley and the First Weeks of the Great War. By M. Crawford. Published 2013. 145 pages. **£9.99**

No.4 Sowerby Probate Records: Household and family in the Upper Calder Valley 1688 – 1700. Edited by David Cant and Alan Petford. Published 2013. 215 pages. **£9.99**

No.5 Enclosing the Moors: Shaping the Calder Valley Landscape through Parliamentary Enclosure. By Sheila Graham. Published Autumn 2014. 130 pages. **£11.99**

Archive Opening Times 2015 - 2016

The Archive will be open to members on the afternoon of the second Wednesday of the month and on the morning of the fourth Saturday of the month. In December there will be no Saturday opening. There is a possibility that the Archive may not be able to open on some Saturday mornings due to the unavailability of volunteer staff. If you want to be sure that the Archive will be open on a particular Saturday, please contact librarian@hebdenbridgehistory.org.uk in advance.

2015	Wednesday 2 - 5 pm	Saturday 10 am - 1 pm
September	9 th	26 th
October	14 th	24 th
November	11 th	28 th
December	9 th	Not open
2016		
January	13 th	23 rd
February	10 th	27 th
March	9 th	26 th
April	13 th	23 rd
May	11 th	28 th

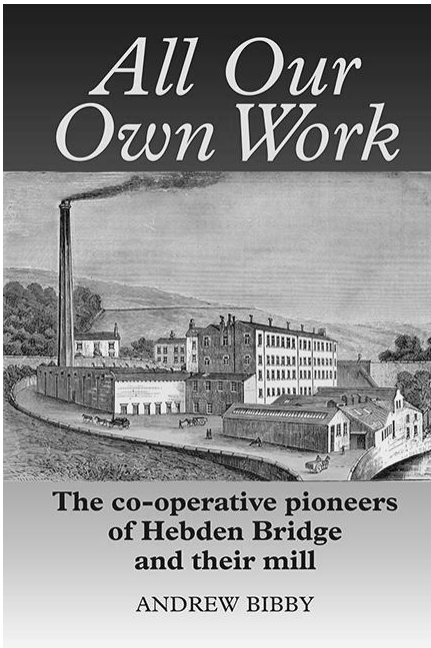
Lecture Programme 2015 - 2016

23 September 2015

WHEN OXFORD UNIVERSITY CAME
TO HEBDEN BRIDGE

Andrew Bibby

How Hebden Bridge embraced the University Extension
Movement



The President of the Hebden Bridge Fustian Manufacturing Co-op, Joseph Craven, called it an attempt to bring the learning of universities within the reach of the working classes: "As it was impossible for working-people to go to Oxford, the Scheme tried so to speak to bring Oxford to the working classes." With the idea strongly supported both administratively and financially by the co-operative, Hebden Bridge rapidly became one of the

northern towns where university extension took off most successfully. This presentation is based on material in Andrew Bibby's new book on the history of Hebden Bridge Fustian Manufacturing Co-operative *All Our Own Work*, which will be available at a discounted price at the meeting.

14 October 2015

THE LOST KINGDOM OF ELMET

Dave Weldrake



Castle Hill, Almondbury

History tells us that Elmet was a small British Kingdom which was annexed by the Saxons in the early 600s CE. The rest is shrouded in mystery. However, there are hints and glimpses of evidence here and there – gather them all together and it's possible to shine some illumination on to the Celtic Twilight.

Dave Weldrake has lived and worked in West Yorkshire for most of his life. He was formerly with the West Yorkshire Archaeology Advisory Service for nearly twenty years and now works as an archaeologist and freelance heritage educator. His principal role is providing a range of archaeological talks and presentations to schools and adult groups.

28th October 2015

LOCAL HISTORY SOCIETY AGM

followed by

WHAT'S IN A NAME?

**Barbara Atack and
Keith Stansfield**

Join Keith and Barbara for a tumble through the ages by way of the family names of West Yorkshire, especially those specific to the Upper Calder Valley; from Aykroyd to Widdop via the omnipresent Greenwoods and the sadly extinct Fixbys.

Keith will provide examples of local nicknames/placenames remembered from his youth, along with a few illustrations of the way dialect words were used in everyday conversation.



Keith Stansfield and Barbara Atack are local family historians who founded the Family History group in 2008 and have been helping members and visitors to unravel their family histories regularly since then. They encounter a wide, and sometimes intriguing, variety of surnames as part of their work.

4th November 2015

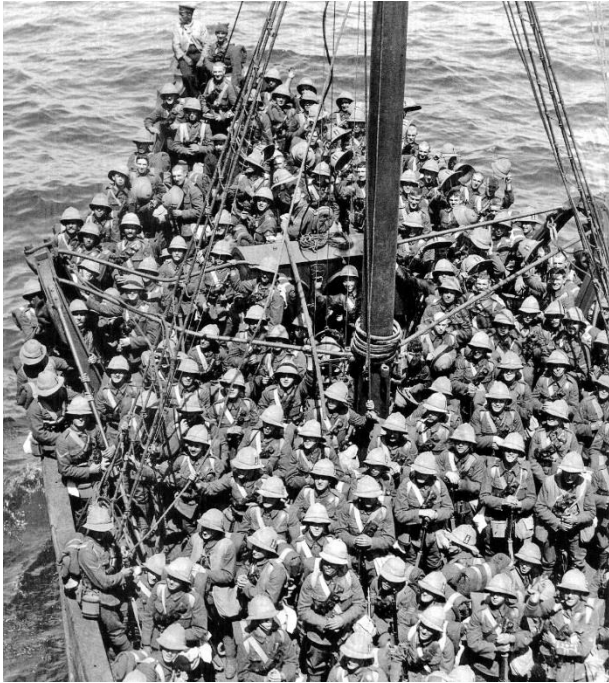
**LITERARY & SCIENTIFIC
SOCIETY AGM**

followed by

TED HUGHES AND GALLIPOLI

Nick Wilding

Nick researched Ted Hughes' unpublished material in the British Library in order to prepare this talk on the experience of the poet laureate's father, William Hughes, in Gallipoli. It had a traumatic impact on his father and was the inspiration for some of Ted's poems.



Lancashire Fusiliers on their way to Gallipoli

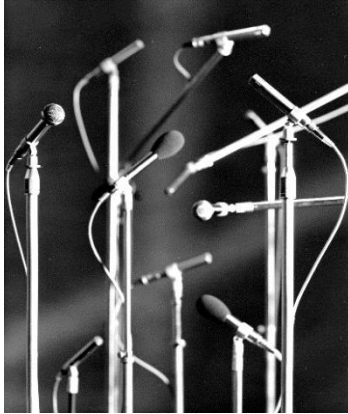
Former BBC producer Nick Wilding founded Excalibur Productions in 1986 and it became the first independent film company to produce a regional programme for the BBC. Excalibur has also produced television commercials, documentaries, and campaign and training videos, which have featured locations throughout the UK, Europe, the Americas, Asia and the Middle East.

His local history documentaries continue to bring the past to life.

11 November 2015

HISTORY OF CALREC: PART 2

Stephen Jagger



The first part of the history of Calrec was told to the Society in 2014, and now Stephen returns to finish the tale of how this audio company founded in Hebden Bridge grew to prominence in the audio industry.

Stephen Jagger joined Calrec in 1972 straight from college, was made a director in 1979, and was managing director from 1989 until 2009.

25 November 2015

WIDDOP AND THE SHACKLETONS

John Shackleton

It all started when the Yorkshire Water Board ranger told John that many people visited Widdop and asked him "Who lived here? Was there a village? What did they do, stuck up here in the middle of nowhere?" John discovered that his Shackleton family came from Widdop and that they had lived at the farm where there were still two barns left standing – and now one. Now, after years of trawling through many documents, a full picture is emerging.



Widdop reservoir

John Shackleton was born in Nantwich, Cheshire, and now lives in Crewe. He is a former primary school teacher, now retired for 8 years, and has been interested in all things historical since as a child he used to ask "What *did* you do grandad?" His researches led to him establishing a website about Widdop three years ago, which to his surprise has attracted 17,000 + hits!

9 December 2015

VANISHING FOR THE VOTE

Jill Liddington

The suffragette census boycott in the Calder Valley – and beyond.



Despite decades of suffrage campaigning, the Liberal government refused to give women the right to vote. Yet this same government demanded households all provide them with accurate information. Suffragette organisations urged women to boycott the census, proclaiming ‘No Vote, No Census!’

Come census night, many suffragettes did evade. The most celebrated evader, Emily Wilding Davison, hid in a cupboard in the Houses of Parliament. In

Bradford, local suffragettes staged a well-reported mass evasion. In Halifax, a similar mass evasion undoubtedly included Hebden Bridge-born Lavena Saltonstall, now working there as a weaver. Yet other equally committed campaigners decided to comply with the census.

In Hebden Bridge, button-hole machinist Elizabeth Berkley of Bankside, a one-time active suffragette, decided to comply. Why?

Jill Liddington is an Honorary Research Fellow at the University of Leeds. Her books, *Rebel Girls*, and *Vanishing for the Vote* are available from The Book Case, Market St.

13th January 2016

TALES ALONG THE PACKHORSE WAY

John Billingsley



Over the years of its existence, travellers on the packhorse way between Burnley and Halifax will have exchanged stories and gossip about the places they passed along the way. An old 'Pack-horse Litany' describes the route, and John uses this as a frame to recount stories past and present to carry us on tonight's journey across the hills.

John Billingsley works in Hebden Bridge library and is author of six books on local folklore and related matters, and numerous articles on folklore, archaeology and place issues.

27 January 2016

RESTORING A UNIQUE ORGAN Peter Jeffery

Why is the Organ of St. Michael's, Cornholme, unique? Why did it have modern organ builders scratching their heads?



Peter Jeffery was born in Cambridge, read Chemistry at Leeds 1960–1963 and was ordained into the Church of England 1966. He has been Vicar of Siddal, Sowerby Bridge with Norland, and finally Cornholme and Walsden. His interest in church organs was part of courting his wife by talking to her father (a church organist for 55 years), thus getting him ‘on side’!



St Michael's Cornholme © Humphrey Bolton (Geograph)

10 February 2016

RAILWAY ROUNDABOUT

Paul Kenny



Hebden Bridge Signal Box – recently awarded listed building status.

A slide show with various aspects of the railway included... not just pictures of trains! Paul was a joiner by trade, but worked as a railway signal-man (including at Hebden Bridge) for the last 23 years. He is also a former member of Aireborough Camera Club, who now enjoys sharing his stories and slides with other people.

24 February 2016

The Alan Petford Annual Memorial Lecture

Alan Petford was a gifted and inspirational lecturer on local history in the Calder Valley and elsewhere. One of his major contributions was to encourage people to engage in local history research and communicate the results. Each year, a lecture in the Society's programme will be designated as in memory of Alan. These lectures will feature original research in local history and/or be on a topic that reflects Alan's wide range of historical interests.

**CALDER VALLEY CONNECTIONS
TO MAGNA CARTA**

David Cant



How events 800 years ago which had a lasting effect on our society are linked to the local area through people and events.

David Cant is a local historian with particular interests in buildings and old documents. This talk springs from a course run with U3A in Todmorden.

9 March 2016

**“...AND IF A GERMAN
VIOLATED YOUR MOTHER?”**

John Rhodes

Calderdale Conscientious Objectors in the First World War

Conscription was introduced on 10 February 1916 for men between the ages of 18 and 41. Around 200 Calderdale men refused to fight on the grounds of conscience. This talk will tell some of their stories, explain their motives and follow them through the Tribunals where they claimed exemption; barracks guard-rooms where they were tried for disobedience and, for some, sentenced to long terms of imprisonment.

John Rhodes is a local historian who has made a study of the motives and background of those who refused to fight in the First World War on grounds of conscience.



"PRIVATE" AFFAIRS.

"—so I goes before the Tribunal, an' a bloke sez,—“ Conscientious Objector are yer; object ter killing, do yer; are yer a Local Preacher or wot? so I sez ‘No, O No, I’m a Pork Butcher’ but they refused me appeal !”

23 March 2016

JOSEPH WOOD, A YORKSHIRE QUAKER

Pamela Cooksey



The surviving collection of one hundred Notebooks written by Joseph Wood has been described as “a rare gem.”

This talk will highlight some aspects of the life of this remarkable travelling Quietist Quaker, as revealed in these unedited writings.

Pamela Cooksey is a member of the Local History Group of the Holme Valley Civic Society, the Huddersfield Local History Society and the Huddersfield and District Family History Society, and a speaker and writer on a variety of local-history subjects relating to Huddersfield, Holmfirth and the New Mill valley. She has a particular interest in encouraging people to undertake local and family history researches using original documents. Her publications include a transcription of the 100 surviving *Notebooks of Joseph Wood (1750-1821), A Yorkshire Quaker*. She is a contributor to the Dictionary of National Biography.

Prehistory Section

We have attended several talks and seminars at the University of Bradford and the Yorkshire Archaeological Society, including:

Bronze Age personal adornment

An update on prehistoric fieldwork in Swaledale

1960s work on North Uist

The Mesolithic-Neolithic Transition

Life and Death in Yorkshire Caves

The launch of Pennine Prospects' new venture to record our woodland heritage

The Prehistoric Society Europa Conference in Dublin, which included a day trip to Newgrange, Knowth and Dowth - spellbinding prehistoric structures with a marked consanguinity to features in Orkney.

Closer to home, talks have been delivered to HBLHS, the prehistory section of Huddersfield Archaeological Society and to Halifax Scientific Society.

There have been consultations with Treesponsibility regarding archaeological assessment of sites they have identified.

We have undertaken a number of small targeted excavations on Ridge Rough – happily near the Packhorse Inn.

These have involved 1m x 1m excavations adjacent to a panel of rock art, a standing stone the long axis of which points exactly to midwinter sunrise, and a longer trench across a presumed barrow. The timing was dictated by Natural

England, and working to a sufficiently professional standard from November to January on the Ridge was character-building to say the least.

So far we have established that the presumed barrow is indeed a funerary structure from the early Bronze Age, and that the makers of cup-marks did indeed clear away their waste. Also, and perhaps more importantly, we have located a number (17) of much smaller standing stones all pointing or facing midwinter sunrise. These 'miniliths' have also been noted in Cornwall...

We intend to return shortly, in kinder weather, to excavate a rock shelter, where there is a good prospect of locating dateable hearths.

Elsewhere we have been made aware of a very early bronze flat axe and a cushion stone – essentially a prehistoric jeweller's anvil. These are currently being assessed in cooperation with the University of Bradford, so watch this space; these are very rare finds that support the model of Calderdale as a place of settlement rather than transit.

Flint artefacts continue to be recovered from the shores of reservoirs at times of low water, confirming a continuous prehistoric presence in our area.

Dave Shepherd

Folklore Section

The convenor of the Society's Folklore Section, John Billingsley, is currently involved (with Brian Hoggard and Jeremy Harte) in setting up the country's first major conference on folk-magical traditions of house protection, although unfortunately it will not be local – **Hidden Charms: Magical protection for the home** will take place on 2 April 2016 at Norwich Castle.

However, such customs are well in evidence in this part of West Yorkshire; John has written on the tradition of carved heads locally and elsewhere in his book *A Stony Gaze* (Capall Bann 1998), and will also have a chapter in Ronald Hutton's forthcoming *Physical Evidence for Ritual Acts, Sorcery and Witchcraft in Christian Britain* (Palgrave 2016). In addition, David Cant contributed a chapter on 'Hearts, Diamonds, Circles and Scrolls' to *Aspects of Calderdale* (Ed. John Billingsley, Wharncliffe 2002).

We are always on the look-out for anomalous concealed items (e.g. shoes, earthenware bottles, coins, and catsare well known locally) as well as carved designs (not masons' marks) – spirals, faces, petal-like designs ('daisy wheels'), arrows, hearts and X-marks are just some of the designs familiar to Calderdale. If you have anything that might fit the bill, please see John at one of our meetings or email

johnbillingsley@jubilee10.freeserve.co.uk. In fact, please contact John if you have anything of local folkloric interest – a story, a custom, an old game or whatever; it will all end up in the society's archive!

John Billingsley

Family History Group

We continue to meet twice a month and still have many enquiries about local families and how to carry out family research. Most people are now able to do this research from home, thanks to the enormous amount of new material being added to the genealogical web-sites. It is so useful that some of the first Parish Registers to be transcribed for Ancestry.co.uk were those of the West Riding of Yorkshire. We have access to Ancestry at the Birchcliffe Centre, but it is also free to use in local libraries.

Here are some free websites that you might find useful if you are curious about your family history.

familysearch.org, the site of the Church of Latter-Day Saints. This has access to many thousands of records, but you may need to look on other sites for greater detail of the documents.

freebmd is the National Archives site for Civil Registration index of births, marriages and deaths for England and Wales from 1837, and provides free Internet access to the transcribed records.

Genuki provides a virtual reference library of genealogical information of particular relevance to the UK and Ireland.

With the anniversary of World War One's outbreak in this last year, some of you may be interested in finding out about family members who were involved.

forces-war-records.co.uk is an interesting site, but there is a charge to use it, about £8 per month.

If you would like help with your family research, please do contact us. We are usually at the Birchcliffe Centre on the first Saturday and third Thursday of the month from 2 pm to 5 pm, (occasionally a second Saturday). There is a possibility that we may not be able to open on some Saturdays due to the unavailability of volunteer staff. If you want to be sure that the Archive will be open on a particular Saturday, please contact me on ataxjb@btinternet.com

Family History Meeting Times 2015 - 16

	Saturday	Thursday
September	5 th	17 th
October	3 rd	15 th
November	7 th	19 th
December	5 th	
January	9 th	21 st
February	6 th	18 th
March	5 th	17 th
April	2 nd	21 st h
May	7 th	19 th

at the Birchcliffe Centre,
 Birchcliffe Road, Hebden Bridge HX7 8DG

Barbara Atack

Exhibitions

During the coming year we have two major exhibitions at the Town Hall and have been working with the local council and Twinning Society on another exhibition.

You may get this newsletter just in time to catch our exhibition about Hebden Bridge's links with St Pol and Warstein: part of post-war Europe. The display, on until 5 September, will show how the links developed, the hard work expended in maintaining those links and how they add to our town today. A junket on the rates? Well, not quite that.

Throughout September (from 7 September to 4 October) there will be an exhibition built entirely around original research by our members. The focus is the township of Stansfield, a huge area stretching from Mytholm and Colden Water to the county boundary beyond Cornholme, including Blackshawhead. The display will cover the growth of settlement across the hillsides, the shaping of the landscape and some insight into the lives of local people at the end of the 17th Century. It will coincide with the Walk and Ride Festival and link with the Stansfield Boundary(ish) Ride – a challenging mountain bike ride on 13 September.

2016 will make another milestone in our remembering of the 1914-18 War. Working with Hebden Royd Council, the Society will be putting together an exhibition to mark these middle years of the conflict. As with the commemorations in 2014, the focus will be on local experience. We have chosen to show the exhibition over Easter (from 29 February to 3 April) to coincide with the introduction of conscription one hundred years ago. If you have any items or thoughts which you would like to offer for this exhibition please contact me at the following e-mail mecrawford@btinternet.com, or by letter at the society.

Quick Guide to Local History Events

2015 (*see note below*)

Until 5 Sept	Twinning Exhibition	Hebden Bridge
7 Sept – 4 Oct	Exhibition on Stansfield Township	Town Hall
10 – 13 Sept	Heritage Open Days	
23 September	When Oxford University came to Hebden Bridge	<i>Andrew Bibby</i>
14 October	The Lost Kingdom of Elmet	<i>Dave Wel Drake</i>
28 October	Local History AGM What's in a name?	<i>Barbara Atack Keith Stansfield</i>
4 November	Literary and Scientific Soc AGM Ted Hughes and Gallipoli	<i>Nick Wilding</i>
11 November	History of Calrec: Part 2	<i>Stephen Jagger</i>
25 November	Widdop and the Shackletons	<i>John Shackleton</i>
9 December	Vanishing for the Vote	<i>Jill Liddington</i>
2016		
13 January	Tales along the Packhorse Way	<i>John Billingsley</i>
27 January	Restoring a unique Organ	<i>Peter Jeffery</i>
10 February	Railway Roundabout	<i>Paul Kenny</i>
24 February	The Alan Petford Memorial Lecture: Calder Valley connections to Magna Carta	<i>David Cant</i>
9 March	'And if a German violated your mother?'	<i>John Rhodes</i>
25 March	Joseph Wood, a Yorkshire Quaker	<i>Pamela Cooksey</i>

NB: *As we went to press, we learned that evening roadworks are being planned on Market Street to take place at some time between October and January. Please note that these may well cause traffic disruption on meeting nights and may require some adjustment to your plans. Watch local media for precise dates.*

Membership

**The subscription for 2015/16 remains at £12
and is due at the beginning of September.**

This year we are introducing the facility to pay your membership fee by standing order or bank transfer.

The enclosed renewal sheet gives details of how to pay by one of these methods or by cheque.

You may also renew your membership at any meeting.

Membership cards for the 2015-16 season will be issued at meetings if possible to save postage.

Other history events throughout the year include
Calderdale Heritage Walks

The current programme is available at the Information Centre,
or see

www.CalderdaleHeritageWalks.org.uk