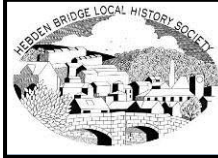


2014 No 2



HEBDEN BRIDGE LOCAL HISTORY
SOCIETY NEWSLETTER
www.hebdenbridgehistory.org.uk

Summer 2014



Power and Potability
Water in the South Pennine Landscape

SATURDAY 6 SEPTEMBER 2014

10.00 – 4.30 pm

UPSTAIRS @ THE BIRCHCLIFFE CENTRE, HEBDEN BRIDGE

Five knowledgeable speakers on the social background and
the uses of water for drinking, farming and power.

See inside back cover for how to book

**Subscriptions are due at the beginning of September –
see back cover for details**

**Published by the Hebden Bridge
Local History Society
The Birchcliffe Centre
Birchcliffe Road
Hebden Bridge HX7 8DG**

President: Barbara Atack
Secretary: Diana Monahan
secretary@hebdenbridgehistory.org.uk
Phone 01422 845982

The society has sections for those with a particular interest in local prehistory, family history and folklore.

Contacts

Prehistory	David Shepherd Email avid.shepher@gmail.com
Family History	Barbara Atack phone 01422 842105 Email ataxjb@btinternet.com
Folklore	John Billingsley Email johnbillingsley@jubilee10.freereserve.co.uk

Cover: A reservoir in the locality – can you identify it?

Welcome to the Summer Newsletter. Here you'll find details of the lectures for 2014-2015, news from the Family History, Folklore and Prehistory sections, a new publication from a Society member, activities and forthcoming events. If you'd like to write a short article on something historic for the Spring 2015 issue please send it to the Secretary by 1 March 2015.

Contents

Society contact details	inside front cover
Contents and welcome	1
Society Publications	2
New Publication: Enclosing the Moors	4
Archive and Library opening dates	7
Lecture Programme	8
Prehistory Section	23
Family History Section	24
Folklore Section	26
Memories of the Great War	28
World War I Memorial from Old Town	30
History Events	31
Programme Summary	back cover

**Receive your Newsletter by email and help keep costs
(and therefore subs) down**

emailmembership@hebdenbridgehistory.org.uk

with your name and membership number and
while we're thinking about subs....see the back page

Local History Society Publications

Society publications can be ordered via our website (www.hebdenbridgehistory.org.uk) where there is a detailed description of each book. Copies can also be obtained from the Bookcase or at Society lectures.

Pennine Valley: a History of Upper Calderdale.

Edited by Bernard Jennings. Originally published 1992. Reprinted with corrections 2011. Paperback. 224 pages.

£14.99

Pennine Perspectives: Aspects of the History of

Midgley. Edited by Ian Bailey, David Cant, Alan Petford and Nigel Smith. Published by Midgley Books, 2007.

Hardback. 346 pages.

£18.00

A Century of Change: 100 years of Hebden Bridge and

District. Text by Colin Spencer. Edited by Diana Monahan. 1999. Hardback. 200 pages.

£15.95

The Diaries of Cornelius Ashworth 1782-1816.

Edited by Richard Davies, Alan Petford and Janet Senior. Published 2011. Hardback. 368 pages.

£19.00

Hebden Bridge Town Centre Trail. 2008. 27 pages. £2

Occasional Publications Series

These titles are short print runs and some are close to going out of print - so buy now if you want to collect the complete series!

No.1 Midgley Probate Records: Household and Family in the Upper Calder Valley 1531-1731. Edited by Ian Bailey and Alan Petford. Reprint of 2007 edition by Midgley Books. Published 2012. 116 pages. £9.99

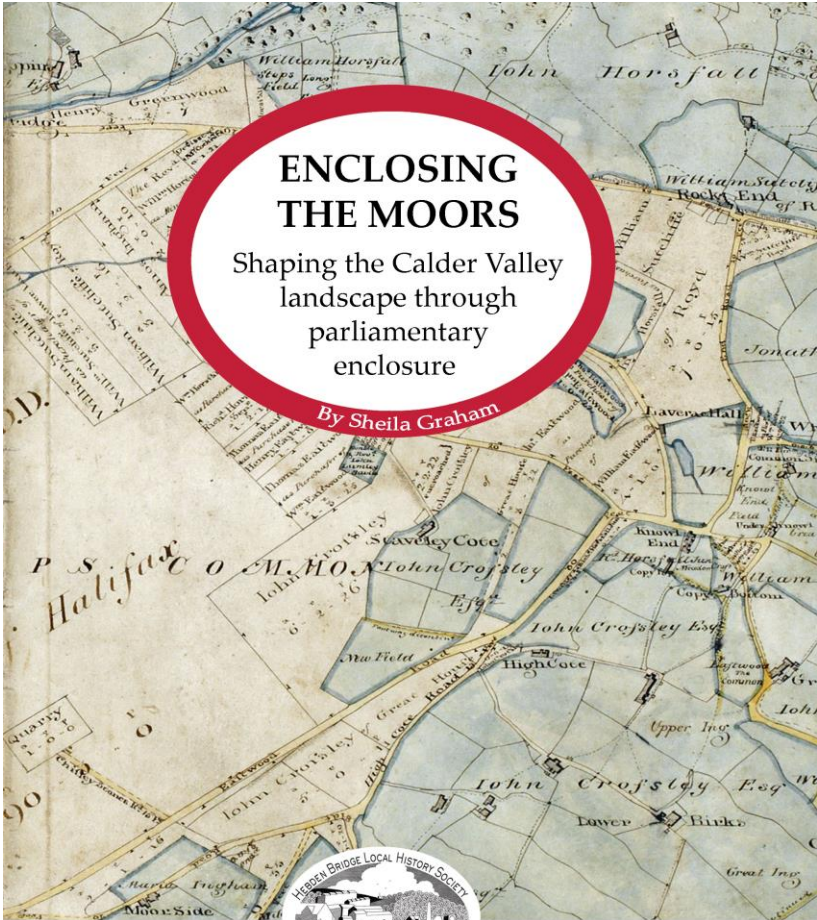
No.2 City in the Hills: Dawson City and the Building of the Walshaw Dean Reservoirs. By Corinne McDonald and Ann Kilbey. Published 2012. 52 pages. £11.99

No.3 Going to War: People of the Calder Valley and the First Weeks of the Great War. By M. Crawford. Published 2013. 145 pages. £9.99

No.4 Sowerby Probate Records: Household and family in the Upper Calder Valley 1688 – 1700. Edited by David Cant and Alan Petford. Published 2013. 215 pages. £9.99

No.5 Enclosing the Moors: Shaping the Calder Valley Landscape through Parliamentary Enclosure. By Sheila Graham. Published Autumn 2014. 130 pages. £11.99

More details of **Enclosing the Moors** on pages 4-6.



ENCLOSING THE MOORS

Shaping the Calder Valley landscape through parliamentary enclosure

By Sheila Graham



Hebdon Bridge Local History Society

Occasional Publication N° 5



Writing 'Enclosing the Moors'

Setting out for a walk on the moors is one of the great pleasures of living in the Calder Valley. The upland landscape has a touch of wildness, with its tracts of heather and tussocky grass. Sometimes you can ramble all day without seeing anyone - but you are never far from a dry-stone wall. Some of them may be falling down, but the way they scribe the moors with their straight lines makes you wonder about the men who built them, and why they are there.

Walking books can guide you along the many paths and bridleways that criss-cross the hills, but this book aims to do something different: to look at the events of two hundred years ago that helped to shape the landscape we see now. In 1814 and 1815 parliamentary Acts ordered the enclosure of common land in Ovenden and Stansfield. An exploration of contemporary documents and maps uncovers a story of debates and disagreements, opportunism and philanthropy that made permanent marks not just on the hills but on the urban landscape too.

Two relatively rare documentary survivals gave impetus to the research. When local landowners in the township of Stansfield (between Todmorden and Heptonstall) made the decision to ask parliament to grant an Act to enclose the moorland commons, their deliberations and resolutions were recorded in a township minute book. Even more revealing is the minute book kept by the commissioners responsible for parliamentary enclosure in another Calder valley township, Ovenden. From this record it is possible to build a clearer picture of the legal and practical processes by which the

commons were enclosed. Other documents such as letters, contracts and bills of sale provided more bits of the jigsaw making it possible to piece together something of the motivations of those who supported and those who opposed the enclosures.

The enclosure awards list every landowner who was allotted land and detail precisely the land they were awarded. From an analysis of this data emerge some fascinating findings about who benefited when common land was enclosed and became private property. The differences between Stansfield and Ovenden are striking. The beautifully detailed maps made at the time delineate precisely what the landscape looked like before enclosure as well as recording the changes planned by the enclosure commissioners. Looking at OS maps made in the following years gives us a glimpse of what happened subsequently, and Google Earth images provide remarkable evidence that two hundred years later we still occupy a landscape noticeably shaped by enclosure.

Very little has been written about parliamentary enclosure in West Yorkshire, and much of what exists is rather generalised. A close and precise study such as this one adds depth and detail and will begin to fill in the gaps in the national picture of parliamentary enclosure in an upland area. More than this though, this book with its colour maps and images tells a story that will enrich our enjoyment of the landscape.

Sheila Graham

Archive Opening Times 2014 - 2015

The Archive at Birchcliffe will be open on the afternoon of the second Wednesday of the month; and on the morning of the fourth Saturday of the month. In December there will be no Saturday opening.

2014	Wednesday 2 - 5 pm	Saturday 10 am - 1 pm
September	10 th	27 th
October	8 th	25 th
November	12 th	22 nd
December	10 th	Not open
2015		
January	14 th	24 th
February	11 th	28 th
March	11 th	28 th
April	8 th	25 th

South Pennine History Group Day School

in conjunction with Pennine Horizons

Power and Potability

Saturday 6th September 2014

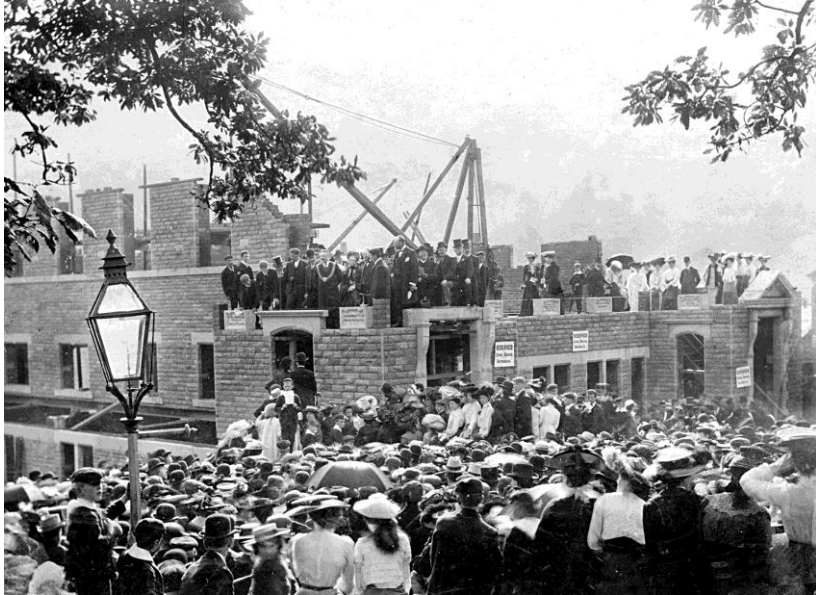
see inside back cover for details

Lecture Programme 2014 - 2015

24 September 2014

VALLEY OF A HUNDRED CHAPELS
How non-conformists shaped our world

Amy Binns



Stone laying at Foster Clough Chapel

Discover more about some of the buildings you pass every day, as well as some that have disappeared, in this lively talk about chapel life, featuring lantern lectures and love feasts, pantomimes and firebrand preachers. Amy Binns is a former Yorkshire Post journalist and is now a senior lecturer at the University of Central Lancashire.

8 October 2014

**THE LISTED BUILDINGS
OF THE HEBDEN BRIDGE AREA**

Peter Thornborrow

Heptonstall, Wadsworth and Blackshaw



Little Burlees, Wadsworth

The rich heritage of the area includes standing stones, crosses, churches and chapels, packhorse bridges, many fine 17th century houses built by yeoman clothiers. Their successors built mills and streets of terraced houses. Many of these were included in the local list of buildings compiled by Peter in the early 1980s; most of the slides to

be shown tonight were taken during this period and provide a snap-shot of local architectural treasures that have been protected by the listed building legislation.

Peter was for some 20 years Secretary of the Local History Society while living at Akroyd near Pecket Well. In 1982 he was appointed Calderdale's Architectural Historian to undertake a re-survey of the Borough for Listed Buildings, and then was appointed an Inspector of Historic Buildings to continue his survey of the rest of West Yorkshire. In the 1990s he worked for WYAS as its Historic Buildings Officer before becoming a Conservation Officer in South Yorkshire until retirement 3 years ago. He is now looking to move back to live in the Halifax area in the near future.

22 October 2014

**VIEWS FROM TWO COMMUNITIES
ON THE OUTBREAK OF WAR IN 1914**

**Mike Crawford
Wolfgang Hombach
and Nick Wilding**

This is an international multi-media event. Three speakers will present thoughts on local experience and reactions to the outbreak of war in Hanau (Germany) and in Calderdale. Themes will include recruitment and local welfare issues.

The presenters are Nick Wilding, local film maker, Wolfgang Hombach, formerly Director of the Erich

Kastner Schule in Maintal and Mike Crawford, local historian and author of *Going to War: People of the Calder Valley and the First Weeks of the Great War*.



An exhibition of material from the early years of World War I is at Hebden Bridge Town Hall from 20th October to 12th November. See page 28 for more information.



Old Birchcliffe Chapel – celebrated on 19 November 2014 in the talk by Frank Woolrych following the AGM.

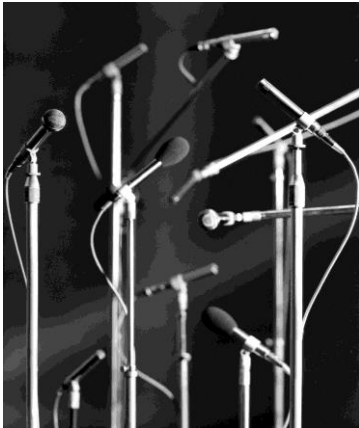
12 November 2014

LOCAL HISTORY SOCIETY AGM

followed by

**THE EARLY HISTORY OF
CALREC AUDIO LIMITED**

Stephen Jagger



How Calrec came to be founded and how it rose to prominence in the audio industry.

Stephen Jagger joined Calrec in 1972 straight from college, was made a director in 1979, and was managing director from 1989 until 2009.

19 November 2014

LITERARY AND SCIENTIFIC SOCIETY AGM

followed by

**SOME LOCAL ANNIVERSARIES
BUT "DON'T MENTION THE WAR"**

**Diana Monahan
Frank Woolrych**

World War One began 100 years ago in 1914, but Diana will recall some other anniversaries in our area and Frank

will explain about an anniversary which led to a building which is important to our society because it holds all our archives.

26 November 2014

WILLS, INVENTORIES AND ECONOMIC
ACTIVITY IN THE PARISH OF HALIFAX
AT THE END OF THE SEVENTEENTH CENTURY

Alan Petford



This talk explores ways in which probate documents can illuminate how the people of the parish of Halifax made their livings in the past and use these same documents to

catch a glimpse inside local houses at the end of the seventeenth century.

Alan is a WEA Lecturer and sometime Lecturer in Local and Regional History in The University of Leeds. He is co-author and author of several publications, including, most recently 'Horribile Dictu', Ecclesiology and the Unitarians in Northern England; The Diaries of Cornelius Ashworth and Sowerby Probate Records.

10 December 2014



HAPPY BIRTHDAY STOODLEY PIKE

Nick Wilding

the bicentenary of the original monument

It's 200 years since the original Stoodley Pike tower was built, and Nick Wilding organized celebrations for the event earlier this year. He will argue that the tower is

more special internationally than has been previously recognized and the talk will be illustrated with photos and film of the celebration.

Nick Wilding is a filmmaker/historical researcher who, in the course of a long career, has made a variety of different documentaries about the Calder Valley, based upon his own extensive archive of interviews with local people. He is still interviewing people today, but is sorry to say that he could not find anyone old enough to reminisce about this particular subject.

14 January 2015

**WAKEFIELD COURT ROLLS
FOR FAMILY HISTORY**

Sylvia Thomas

Seven centuries of evidence for the family historian

The Manor of Wakefield was the largest in the country, covering a huge area of West Yorkshire, including the Calder Valley. The Yorkshire Archaeological Society holds records of the manor going back to 1274 and, because the manor court was at the heart of everything that happened on the manor, its rolls are a mine of information about the tenants who lived in the area from the 13th to the 20th centuries. This illustrated talk will show what the rolls are like, and demonstrate how they can be used to find out more about the history of families who lived on the manor, from hostile mothers-in-law to

controlling fathers. Of course, there are 670 rolls to go at, so no shortage of evidence!

Sylvia Thomas is the president of the Yorkshire Archaeological Society, which owns the court rolls. She is also a former County Archivist of West Yorkshire.



Court Roll of the Manor of Wakefield

28 January 2015

PATTERNS IN THE LANDSCAPE

Nigel Smith

The evolution of settlement and enclosure in the Upper Calder Valley



Horsehold from Edge End Moor

The familiar landscape of the Upper Calder Valley is defined not only by its topography but also by its scattered farms and field patterns reaching up to the moors. This talk considers the evidence for the origins of settlement and its associated enclosures in the Valley and the various factors that influenced its spread up to the nineteenth century.

Nigel has spent the last few years studying the historical development of the Upper Calder Valley landscape as part of his research for a PhD at the University of Lancaster.

11 February 2015

GROWING UP IN SOWERBY

Jean Illingworth



Sowerby Towngate from St Peter's tower

This talk will look at the background details of Sowerby and the historic buildings lost with the building of corporation housing estates. Some childhood memories and nostalgia for village life in the late 40s and 50s.

Jean worked in retail over the years including as an Avon Lady, then spent twelve years in the media library at the Halifax Courier. Writing letters to the paper was a starting point to a later writing career which involved making herself computer literate to enable a more serious approach.

25 February 2015

**A LONG TIME AGO,
BUT NOT THAT FAR AWAY**

David Shepherd

Some insights into the first people
who lived in the Calder Valley



David has been involved in archaeology for over fourteen years and his fieldwork has led to the location and recording of numerous prehistoric features in the South Pennines. With an academic background in social psychology his preoccupation is with the ways that people come to express their relationships with places.

11 March 2015

GRUELLING EXPERIENCES

Peter Higginbotham



A look at the evolution of the workhouse from its origins in the seventeenth century to its final demise in 1948. Focusing on the local area to look at buildings, how the workhouses operated and what life was like for the inmates. Did they really exist on gruel?

Peter Higginbotham is a writer and researcher best known for his extensive study of the workhouse and related institutions. He is the author of a number of books including *The Workhouse Encyclopaedia*, *The Workhouse Cookbook*, *Voices from the Workhouse* and *A Grim Almanac of the Workhouse*, and the creator of the website www.workhouses.org.uk. He has also contributed to many radio and TV programmes including *Who Do You Think You Are? Heir Hunters*; *Coming Home* and *Secrets from the Workhouse*.

25 March 2015

**THE DAM THAT ISN'T AND THE
GREAT FLOATING PLUG OF THE COLDEN**

Dave Smalley

In the late 1930's as the storm clouds gathered over Europe they also did over the upper Colden Valley. A catastrophic collapse of the neglected Noah dam released a wall of water down the valley and depositing the core of the Dam downstream. Or did it?

This lecture revisits the earlier research of Thornber and Uttley and with the aid of new and more comprehensive material suggests a slightly different scenario that additionally provides possible insights into the original construction of the Dam.



Dave Smalley has been a member of the Local History Society since his retirement in 2006 and a resident of the upper Colden Valley since 2000. With a background of Earth Sciences, building and civil engineering, followed somewhat eclectically by Cultural Diplomacy, he now continues a lifelong interest in the evolution of the landscape and the history of man's impact on it.

Prehistory Section

Recent activities have included survey work while the water was drawn down at Ringstone Edge Reservoir for maintenance work. It revealed a very well preserved cist burial - a box made of stone slabs, used for interring cremated remains in the Bronze Age. We were able to record it before the water rose again.

Late Neolithic/Early Bronze Age flint continues to turn up at a number of sites across Calderdale. We report regularly to the Portable Antiquities Scheme.

At the moment we are preparing a proposal for some small-scale excavations on The Ridge, to be submitted to Natural England shortly.



The cist from Ringstone reservoir

Dave Shepherd

Family History Group

The Family History Group has now been in existence for 6 years and during that time has been very active. The bi-monthly meetings have been attended by local family historians looking to research their own family and many visitors from out of town who are researching local families. We also have answered many queries about local families, many from overseas. Several members have steadily continued the enormous task of transcribing the graves in the old churchyard at Heptonstall and this could be completed next year. We then hope to begin transcribing the graves in the newer churchyard which opened in 1911 and is on the other side of the lane behind the church.

We are looking for volunteers to help at the afternoon meetings. They are usually on the first Saturday or the third Thursday of each month. We have had to cancel one or two meetings this year for lack of helpers. If you have carried out family research and are able to find your way around web sites, we would welcome your assistance. This does not need to be on a regular basis.

Below are the dates of the Family History meetings until the end of next season. Please note that two dates (highlighted) do not follow the usual pattern of 1st Saturday/3rd Thursday. All meetings are between 2 pm. and 5 pm. Changes may occur so it is advisable to contact us beforehand if you are planning a visit.

Family History Meeting Times 2014 - 5

	Saturday	Thursday
August	30th	
September		18 th
September	27th	
October		16 th
November	1 st	20 th
December	6 th	
January	3 rd	15 th
February	7 th	19 th
March	7 th	19 th
April	4 th	16 th
May	2 nd	21 st
June	6 th	18 th

at the Birchcliffe Centre,
Birchcliffe Road, Hebden Bridge HX7 8DG

Barbara Atack ataxjb@btinternet.com

Folklore Section

As many members will know, I have been collecting local folklore for some time, and now have a considerable bank of information which I hope to publish and/or lodge with the society in years to come. However, as folklore is so much a part of our lives, both past and present, there is always more to be recorded, much of it so everyday that we might not feel it to be of value – but it is...



Young Pace-egggers over 100 years ago

Part of local folklore is the regular days you did a certain task, and any other habits or activities associated with that, such as perhaps marking bread dough with a cross. Please let me

know if you have any local traditions or stories to add to our growing information bank of local customs and beliefs; all information will be credited to you, or anonymous, as you choose.

As a start, here are some ideas:

- Was there a strange story you heard about a place?
- Did certain places have nicknames, and why?
- Have you ever taken part in a local mummer's play other than the Heptonstall and Midgley Pace-Egg?
- Have you experienced or heard tales of boggarts, fairies, ghosts, witchcraft, folk healers (like wart-curiers), etc.?
- Do you live in an old house, and have you found unusual carvings or inscriptions, or objects in unexpected locations (such as shoes up chimneys)?
- What superstitions and traditional sayings do you know?
- What did you, your parents or grandparents believe about folk customs, superstitions, people's behaviour?
- What skipping rhymes or other games (except standard sports like football and tennis) did you play when you were young?

John Billingsley

Memories of the Great War

An exhibition commemorating the First World War has been prepared by local historians and is on display at Hebden Bridge Town Hall from 20th October to 12th November - others are planned for 2016 and 2018. This split has been adopted to illustrate and emphasise developments during the war. Warfare and home life in 1914 was not the same as in 1916 and conditions changed again by 1918. However the anguish and misery were shared by families here, in St Pol and in Warstein.

This first exhibition displays material dealing with 1914 and 1915; the beginning of the war and how quickly this occurred; just which voices were raised against war at that time?

Did the experience of soldiers change during these years? Local men were engaged from Mesopotamia to Flanders. What were their experiences and what did they encounter? What was the impact of the increasing number of local dead and missing.

During these years men volunteered for the forces: hundreds of men from Hebden Royd alone in 12 months. Who were these men? Which units did they join? What kind of pressure did they experience? St John's Ambulance Brigade were a major contributor.

How did families keep in touch? Photographs and letters. Letters were not always censored by officers. It was a time of worry - refugees - news of atrocities - and local Germans. It was also a boom time for industry.

As more men left the town, women became more significant in the local workforce - from munitions to nursing. Attitudes towards women and war changed as the weeks went on. Traditional roles were followed: new roles were taken.

We have been blessed with materials offered by local families. These have been made possible by the generosity of local families offering valuable personal items for scanning and photographing. It is such offers which allow the exhibition to move beyond published sources and make it properly local. Some interviews have been done with people talking about the experiences of their relatives. I hope more people will feel able to come forward with such materials - a photograph - a letter - a medal - a story. They are all welcome additions to the picture.

Background to the exhibition by Mike Crawford, author of *Going to War; People of the Calder Valley and the First Weeks of The Great War*, *Hebden Bridge Local History Occasional Publication 3* (2013).

Old Town World War I Memorial

The WW1 memorial from Old Town Methodist Chapel (now closed) has been moved to Wainsgate Chapel and there will be a short re-dedication.

So far £750 has been raised towards the cost of taking down the memorial, its restoration and refixing. The balance still needs to be found so the Friends of Wainsgate would welcome donations towards this.

As part of Heritage Open Days, Wainsgate Chapel will be open on the afternoon of Saturday 13th September 2 – 4.30pm when the memorial will be dedicated.

Wadsworth Environment Group (WEG) will be providing a tea and cake stall 2pm -4pm.

2:30 to 3pm Introduction to Memorial Re-dedication, followed by some poetry readings, information on the men on the memorial and Re-Dedication by Rev John Muir, finishing with the Last Post.

It is hoped the organ will be played before and after the Re-dedication (assuming it can be made to work as much restoration is required on this as well as the chapel).

Quick Guide to Local History Events

For the programme summary see back cover

South Pennine History Group Day School

Saturday 6th September 2014

see inside back cover

Heritage Open Days

Thursday 11th – Sunday 14th September

Wainsgate Chapel



The Historic Chapels Trust have arranged an open afternoon (2 – 4.30pm) on Saturday 13th with an exhibition, dedication and the opportunity to hear the Wordsworth organ.

Image www.wainsgate.co.uk

More details of Historic Chapels Trust on:

www.hct.org.uk/chapels/yorkshire/wainsgate-baptist-church/21

Gibson Mill

Free entry during the week-end from 11 am-4 pm on Thursday 11th, Saturday 13th and Sunday 14th.September.

www.nationaltrust.org.uk/hardcastle-crags/

Quick Guide to Local History Events

Halifax

There are 15 events registered over the four days in Halifax, including a talk by **Colum Giles**, author of *Rural Houses of West Yorkshire* (1986) and *The Building of Halifax* (2010) at

5pm on Friday 12th September at Halifax Town Hall
'Town and country: Halifax's special historic environment'

Sowerby

St Peters Church

Saturday 13th September: 11am-4pm
and Sunday 14th September: 11am-4pm

Sowerby Bridge

Christchurch

Saturday 13 September: 10am – 3pm

Todmorden

Unitarian Chapel

The Historic Chapels Trust (HCT) are holding open days from 10am – 4pm on Saturday 13th and Sunday 14th. Todmorden Incredible Edible Group will be serving tea and cakes.

There are many other events over the four days.

See www.heritageopendays.org.uk/

Other history events throughout the year include Calderdale Heritage Walks whose programme is on www.CalderdaleHeritageWalks.org.uk

Quick Guide to Local History Events

Power and Potability

Water in the South Pennine Landscape

Saturday 6th September 2014

9:15 am to 4:30 pm

Upstairs at the Birchcliffe, Birchcliffe Centre, Hebden Bridge,
HX7 8DG

Cost £20 including lunch and refreshments.

Programme

- David Weldrake* West Yorkshire before Mains Water
Justine Wyatt Power in the Landscape
Victor Khadem Medieval Watercourses in the South Pennines
Norman Redhead The Oldham Water Corporation Reservoirs at Castleshaw, Denshaw and Piethorne: their impact on the Landscape.
Ann Kilbey City in the Hills. Dawson City and the Building of the Walshaw Dean Reservoirs

For centuries the use of water has had an enormous effect on our upland landscape. Its availability determined the location of early settlement in the hills, while later settlement further away used this landscape for water storage. From medieval times, man has also used the power of upland streams to drive corn and fulling mills in the valleys. This day school looks at several aspects of how man's need for water and power has affected the South Pennine landscape over time.

Booking in advance is required. If you wish to reserve a place, please send a cheque, payable to Hebden Bridge Local History Society, together with your name, address, telephone number and email address to Rachel Smith, Bramble Dene, Moss Lane, Hebden Bridge, West Yorkshire, HX7 7DS.

Quick Guide to Local History Programme

2014

24 September	Valley of 100 chapels	<i>Amy Binns</i>
8 October	Listed buildings of the Hebden Bridge area	<i>Peter Thornborrow</i>
22 October	View from two communities on the outbreak of war in 1914. Also Town Hall exhibition 'til 12 Nov	<i>M Crawford, W Hombach, N Wilding</i>
12 November	Local History AGM Early history of Calrec Audio	<i>Stephen Jagger</i>
19 November	Literary and Scientific Soc AGM Some local anniversaries, but don't mention the war!	<i>Diana Monahan Frank Woolrych</i>
26 November	C17 wills and inventories	<i>Alan Petford</i>
10 December	Stoodley Pike	<i>Nick Wilding</i>

2015

14 January	Wakefield court rolls for family history	<i>Sylvia Thomas</i>
28 January	Patterns in the landscape	<i>Nigel Smith</i>
11 February	Growing up in Sowerby	<i>Jean Illingworth</i>
25 February	A long time ago, but not that far away	<i>David Shepherd</i>
11 March	Gruelling experiences	<i>P Higginbotham</i>
25 March	The dam that isn't and the great floating plug of Colden	<i>Dave Smalley</i>

Membership Subscription for 2014/15 remains at £12 and is due at the beginning of September.

Please send your cheque, payable to 'Hebden Bridge Local History Society' with your name, address, phone number, email address and membership number (if known) to

**Rachel Smith, Membership Secretary, Bramble Dene,
Moss Lane, Hebden Bridge, HX7 7DS**

Alternatively you can renew membership at a meeting. Membership cards for the 2014-15 season will be issued at meetings if possible to save postage.