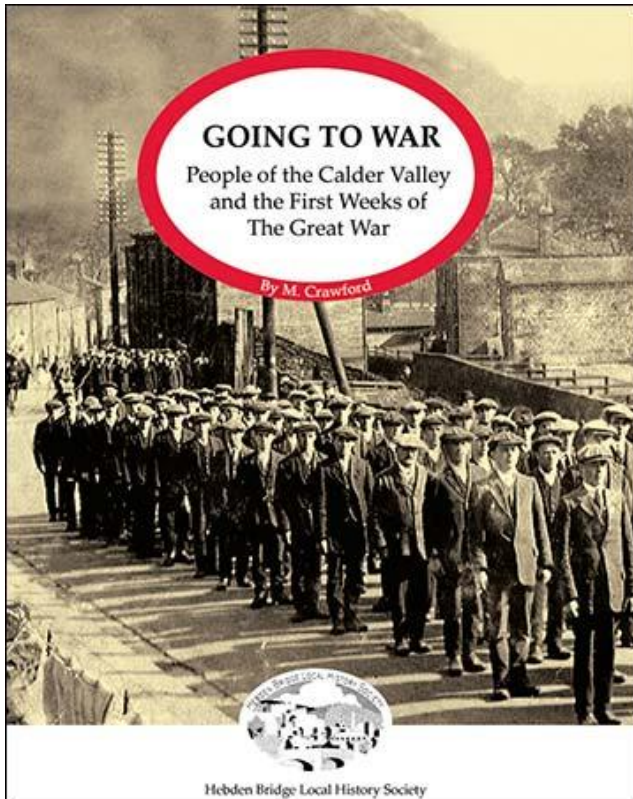


HEBDEN BRIDGE LOCAL HISTORY
SOCIETY NEWSLETTER
www.hebdenbridgehistory.org.uk

Autumn 2013



New book – out now

**Subscriptions are due at the beginning of September
see back cover for details**

**Published by the Hebden Bridge
Local History Society
The Birchcliffe Centre
Birchcliffe Road
Hebden Bridge HX7 8DG**

President: Frank Woolrych
Secretary: Diana Monahan 01422 845982
secretary@hebdenbridgehistory.org.uk

The society has sections for those with a particular interest in local pre-history, family history and folklore.

Contacts

Prehistory	David Shepherd email shep.herd@btinternet.com
Family History	Barbara Atack phone 01422 842105 email ataxjb@btinternet.com
Folklore	John Billingsley email johnbillingsley@jubilee10.freemove.co.uk

Receive your Newsletter by email and help keep costs (and therefore subs) down

email membership@hebdenbridgehistory.org.uk
with your name and membership number

Cover: Mike Crawford's new book published by the Society – to order your copy or for background information see page 17.

Welcome to the Autumn Newsletter. Our speaker finders have organised an excellent programme of lectures, there are reports of the Family History, Folklore and Pre-History section activities, and articles on research and publication.

Minutes Secretary

The society wonders if there is a member who would be willing to take on the role of Minutes Secretary? There are only 6 committee meetings each year plus the AGM. Committee meetings are usually on the 3rd Wednesday of alternate months. If you would like to offer your services or know more, please contact Frank Woolrych or Barbara Attack.

Contents

Society contact details	inside front cover
Contents and welcome	1
Archive and Library opening dates	2
AGM and nominations form	3
Forthcoming lectures	4
Obituaries	11
Pre-history Group	13
Family History Group	15
With a little help from my friends...	17
Resources for Research	19
Events	inside back cover
Programme summary and membership	back cover

Lectures

are held at the Hebden Bridge Methodist Church,
Market Street, Hebden Bridge, HX7 6EU at 7.30 pm.

Archive Opening Times 2013-2014

The Archive at Birchcliffe will be open on the afternoon of the second Wednesday of the month; and on the morning of the fourth Saturday of the month, except in December. For more information and details of the Open Day on 26th October see pages 19 - 20.

2013	Wednesday 2 - 5 pm	Saturday 10 am - 1 pm
September	11 th	28 th
October	9 th	26th Open Day
November	13 th	23 rd
December	11 th	Not open
2014		
January	8 th	25 th
February	12 th	22 nd
March	12 th	22 nd
April	9 th	26 th
May	14 th	24 th
June	11 th	28 th
July	9 th	26 th
August	13 th	23 rd

Committee Nominations and Items for AGM Agenda

Any items/proposals for discussion at the AGM and any nominations for officers or committee members should reach the Secretary by 30th September 2013.

Mrs Diana Monahan
7 New Road
Hebden Bridge
HX7 8AD

email: secretary@hebdenbridgehistory.org.uk

If you wish to nominate someone for the committee of either the '**Hebden Bridge Local History Society**' or the '**Hebden Bridge Literary and Scientific Society**' and they are willing to stand please complete and send the following information

Local History AGM 23rd October 2013 *(delete as
Literary and Scientific AGM 30th October 2013 required)*

I wish to nominate _____

for the position of
President/Secretary/Treasurer/Librarian/committee member
(delete as required)

Proposer _____

Membership number (if known) _____

Secunder _____

Membership number (if known) _____

You can copy this page if you prefer

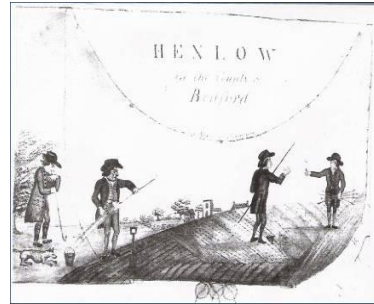
CARTOGRAPHICAL CRIMES

Tony Morris

25 September 2013

A look at maps and their origins, including the Ordnance Survey. What do we learn about cartographic crime?

After retirement from lecturing and training, Tony Morris joined a speakers' club and has been following this path for the last 10 years.



THE HISTORY OF MODERNA

Joan Laprell

9 October 2013

The story of the blanket makers of Mytholmroyd. Where and how it all began; a few amusing and amazing incidents which happened in its heyday; and the sad demise of this unique factory.



Joan worked at Moderna for ten years, then went back to journalism and was the Features Editor of the Yorkshire Ridings Magazine for thirty years.

**WITCHCRAFT IN THE
UPPER CALDER VALLEY**

John Billingsley

23 October 2013



The first half of the 17th century was rife with fears and accusations of witchcraft, as the famous Pendle cases of 1612 and 1634 show. John will offer a context for and outline the few details available of a contemporary local case. He

is a local folklorist with six books to his credit, and was organiser of last year's commemorative day-school, Pendle 400.

LITERARY AND SCIENTIFIC SOCIETY AGM
followed by

How the Digital Archive has changed

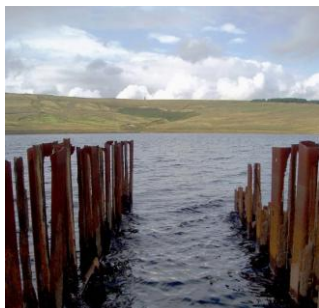
30 October 2013

7.30pm Hebden Bridge Methodist Church

WITHENS RESERVOIR

Shirley Daniel

13 November 2013



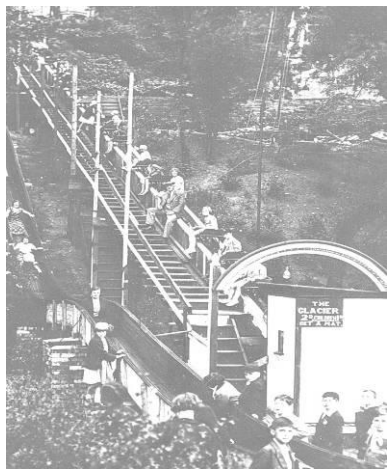
*Image from Geograph by
Charlie Boyce*

Withens Reservoir and its surroundings are much appreciated for their natural and isolated beauty – but when, where, how and why was it built? Shirley lives on the hilltops in Cragg Vale. In 2008 she helped launch the Cragg Vale Local History Group, which is now a popular monthly feature in the village, aiming to put local history within its place in the wider world.

A POSTCARD FROM SUNNY BUNCES'

Chris Helme

27 November 2013



The Sunny Vale Pleasure Gardens, Halifax was Yorkshire's Alton Towers of the nineteenth century and had 100,000 visitors from the north of England every season. This talk takes us back to the days of Sunday school treats! Chris has published seven local history books, and written a weekly nostalgia column for his local newspaper, the 'Brighouse Echo,' for twenty eight years.

11 December 2013

Sam Hill is probably our best known eighteenth century textile manufacturer, thanks to his collection of business documents held in Calderdale Archives. This talk shows him as family man, neighbour and man of property. Anne is Secretary of the Halifax Antiquarian Society, and has been researching his life for some time.



SOME THOUGHTS ON HISTORIC BUILDINGS AND THEIR REPAIR

Alan Gardner

8 January 2014



Alan will use case studies to illustrate his approach to the repair of historic buildings and tell some of the stories that these buildings can impart if we continue to look after them appropriately and know how to 'read them'. Alan is

a Chartered Building Surveyor, who is accredited in conservation and specialises in the repair of historic buildings.

**CALDER VALLEY BUILDINGS
OF THE SEVENTEENTH CENTURY:
the Craftsmen and their Patrons**

David Cant

22 January 2014



The fine buildings of the Calder Valley were produced by groups of craftsmen working for some of the local gentry and yeoman clothiers. The talk will combine

documentary and structural evidence to show how this was achieved. David has spent over 20 years studying local history in the area with a special interest in buildings.

QUARRYING IN CALDERDALE

George Bowers

12 February 2014



A look at the history of quarrying in the Elland flagstone and millstone grit areas with stories and images of the delvers and the problems and dangers they faced. George

has spent a lifetime in the building industry working all over the UK and Ireland. This inspired his interest in the history of quarrying.

EXPLAINING THE INDUSTRIALISATION OF THE CALDER VALLEY:
the Relationship of People and a Unique Landscape **Steve Caunce**

26 February 2014

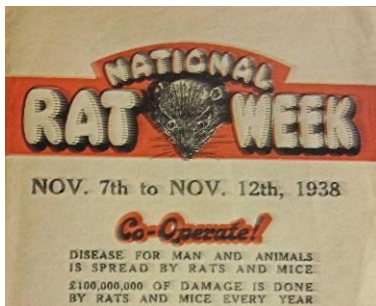
The eighteenth century saw a transformation of the Calder Valley, taking it to the forefront of textile manufacturing in the UK. So far we have many descriptions, but no



comprehensive explanations for why such a locality could become so influential. Steve has lived in the area for about 25 years and is currently a senior lecturer in history at the University of Central Lancashire in Preston.

YORKSHIRE LIFE BETWEEN THE WARS **Ian Dewhirst**

12 March 2014



Ian is a retired librarian with an Honorary Doctorate and MBE for services to local history. His talk will cover topics from the 1920s and 1930s including health, housing, holidays and National Rat Week.

WHOSE LAND IS IT ANYWAY?

Sheila Graham

**How Parliamentary Enclosure left its
mark on the landscape of the Calder Valley**

26 March 2014



Behind our dry stone walls lies the story of a national movement for land improvement. Maps and documents help to explore the ways in which Acts of Parliament regulated the division of the commons and moorlands of the Calder Valley in the nineteenth century. Sheila has studied these features for a number of years as part of the Society's Landscape Project.

Obituaries

Two respected members of our Society died during the last year. Diana Monahan has written these tributes.

Ruth Ryder



Ruth Ryder, a long-standing member of our society, died suddenly on 12th July 2013, while on holiday in Dundee with her friend Barbara. Born a Marshall, she was proud of her roots and had researched her family tree extensively, displaying it on several rolls of wallpaper. Brought up as a Baptist, she worked tirelessly for Hope Baptist Chapel up to

the last week of her life. At one time she taught at Sunday School there, as well as being a teacher of Domestic Science and Needlework at Calder High School. To raise money for Hope Chapel, she made marmalade in industrial quantities and helped run the Thursday coffee mornings there. Her enthusiasm will be sadly missed at HBLHS meetings.

John Charles Fletcher, a long-standing member of our society, died peacefully in hospital in April. He and his wife, Marjorie, had recently received a card from the Queen congratulating them on their Diamond Wedding Anniversary.



Until he had to go into a care home, John attended most of our lectures and will be remembered for his succinct questions after the talks which, in the latter years, were delivered in a quiet, frail voice.

As well as an interest in local history, John had a love of Natural History and was also a member of the Halifax Scientific Society. He played the piano and I had many a conversation about music. We also discussed mathematics, science and philosophy.

John was a Doctor of Philosophy and a Fellow of the Royal Institute of Chemists. During World War II he was a Radar fitter in Iceland. His working life began at Macintosh's then he went to the Wool Industries Research Association and carried out fundamental research on the composition of wool fibres, radio chemistry, the sulphur balance in wool and partition chromatography. It is no wonder that his last attendance at our society, with the assistance of one of our members, was to a talk on our textile industry.

Pre-history Section



Orthostat walling
at Rishworth
recently surveyed
by the section
(*Brian Howcroft*)

Members attended the Pennine Prospects conference at Marsden in October: Many of the speakers were concerned with 'supporting/facilitating a local infrastructure to engender the regeneration/development of nature'. Of particular interest was the speaker who remarked, 'You can't market your total asset register - but if you focus on brand icons, you can get somewhere at least'. Also there was much about 'shared visions'... We did not enjoy this conference but the buffet was very good.

We have a connection with Treesponsibility and have attended several meetings. Our presence helps to ensure that areas identified for tree planting, or other interventions, are field-walked to check that no existing archaeology is jeopardised.

National Character Areas were introduced by speakers from Natural England in January. Non-archaeological bodies rely a great deal on the Historic Environment Record and it is fortunate that we recently amended all the West Yorkshire upland records and provided additional data from our fieldwork.

We have had several contacts with Paul Preston, who recently completed a PhD devoted to the Mesolithic of the South Pennines, both at conferences and individual meetings. It is hoped that a further research project may emerge.

We have spent a lot of time trying to trace the assemblages of Harry Stansfield, active in the 1970s/80s. This is continuing, and serves to highlight the difficulty posed by the county boundary, such that collections from the same Calderdale site can appear in Rochdale, Barrowford or Huddersfield. Visits have been made to Bacup and Littleborough Historical Societies with this in mind. The effort to locate and record other private collections is continuing.

We attended the Dales National Park Archaeology Day at Grassington, and the Council for British Archaeology (NW) conference in Manchester. The latter reinforced our impression that the prehistory of Calderdale relates more properly to Lancashire and the Irish Sea, rather than to the dominant East Yorkshire paradigm.

Fieldwork has progressed, with the planning of upstanding features continuing - including a possible Late Palaeolithic shelter, and with the recovery of flint and chert from the fringes of local reservoirs reinforcing the evidence for a continuous prehistoric presence in this area from the end of the last ice age.

David Shepherd email shep.herd@btinternet.com

Family History Group

We continue to meet twice a month at the Birchcliffe Centre and welcome regular members of the group and, over the year, new members and several visitors, some from other countries, tracing their local ancestors.

We have now updated our web site and added many more transcriptions from Heptonstall Old Churchyard, about another 900. However, there are still several hundred graves to transcribe and this is an ongoing task. Our special thanks go to Arthur Byrom, one of the youngest members of the Society, who has undertaken the transcriptions of one of the older sections of the graveyard (nearly 200 graves) as part of his Duke of Edinburgh Award.

Pennine Horizons have now set up a computer in the map room at Birchcliffe, which has access to many local photographs from their digital archive and includes images from the Alice Longstaff and the Local History Society's own extensive collections. Members are welcome to come and browse through the photos, and maybe you could help us to identify some of them.

We have been asked by the new Town Hall trustees to undertake a project to record the lives of past Leaders of the Council, especially those who have a photograph in the Council Chamber. We are gathering information about each person from archive records and hope to produce an information sheet for visitors about each photograph. This will involve visits to study newspapers at Halifax library and Internet research. More information about this project will be

forthcoming at the end of the year but if you would like to become involved in any of our projects, we would be glad to hear from you.

Barbara Atack ataxjb@btinternet.com

Family History Meeting Times 2013 - 2014

	Saturday	Thursday
August		15 th
September	7 th	19 th
	28 th	
October		17 th
November	2 nd	21 st
December	7 th	No meeting
January	4 th	16 th
Feb	1 st	20 th
March	1 st	20 th
April	5 th	17 th

at the Birchcliffe Centre,
Birchcliffe Road, Hebden Bridge HX7 8DG

With a little help from my friends

I have written a book about the opening weeks of the Great War. I didn't mean to do it. At the outset I began reading about the topic simply to arrange a bike ride with a historical theme: 'The Retreat from Mons' - not a victory, but hardly a defeat - a terrific and sustained rearguard action which prevented disaster.

Although I had heard of The Retreat, I did not know it and I came to feel that the men of 1914 were easily overlooked. Thousands died and have no known grave, thousands ended up as prisoners of war - they never knew the mud and slaughter of the trenches, but they were British, and German and French soldiers of the First World War. These were men too easily dismissed as going gaily to war. Who goes gaily to war - only fools! These men were not inexperienced in war, and they were not fools. They were professionals and Reservists, men in their late twenties and thirties - family men trying to build a home and raise a family. Within three weeks of declaration, local men lay dead in Belgium or were on their way to prison camp in Germany.

Then I saw that there was a bigger picture. Families at home struggled to get on with their lives while husband, father, brother, son had gone to war. How did wives and families manage and did they know what might be happening to their loved ones?

These were weeks of crisis in France and at home in the Calder Valley. How did local people respond to the crisis? Were voices raised against the war? These people lived through that time and in this valley. Hundreds of individual decisions to

enlist were made against the background of the crisis of 1914 - would we have chosen otherwise? And eventually people understood that this war would be different to the South African War.

Slowly I realised that this was a story worth the retelling: one to be shared in 2014. There is something impressive about the soldiers and about the country at that time. I embarked upon more detailed research and began to think of possibly giving a talk on the topic or maybe writing a book. The book would provide

- an opportunity to tell a story I felt needed retelling;
- a reason to begin research into original sources locally and further afield in London and abroad;
- and it would help me to crystallise my own thoughts and feelings about these events.

Research also showed me that it would be impossible to see the full picture: there would always be details and personal information not in the public domain.

Slow realisation has characterised the emergence of this book. It has been an exciting and at times frustrating process. I have had help from many people. And there has always been alongside, the guidance and encouragement from members of Hebden Bridge Local History Society. It has not been a case of writing alone.

Mike Crawford

Mike's book costs £9.99 (plus £2 p + p) cheques to Hebden Bridge Local History Society. It is available from him at 1 Royd Mount, Heptonstall Road, Hebden Bridge, HX7 6BG 01422 8432219 email goingtoward14@gmail.com or at meetings, or from The Bookcase and the Tourist Information Centre.

Resources for Research

The Society's Archive, located in the Birchcliffe Centre, is both a library of local history books and an archive of unique original documents. The shelves host a fascinating mix of post-1900 publications (as well as some nineteenth-century works) that range from books on the Brontes to local walks books and town guides, as well as a good range of publications on local history. While early members of the Society donated or collected books on fairly wide-ranging topics, today the collection policy is limited to those publications dealing with the Upper Calder Valley. However, this also includes a fairly new section that contains the works of local authors.

In addition the Archive also collects local magazines such as Valley Life and Hebden Bridge Matters as well as holding more serious journals such as the Transactions of the Halifax Antiquarian Society and the Local Historian. In recent years there has been a deliberate policy of collecting local ephemera such as cinema brochures, Arts Festival programmes and similar material that reflects what is going on in the Valley today. This publicity material will provide a valuable insight into early twenty-first century Hebden Bridge for future historians of the valley.

Original documents are an equally diverse collection and range from Elizabethan property deeds to nineteenth-century Sunday school registers to twentieth-century local authority records. These collections are complemented by the much larger collections of the West Yorkshire Archive Service in Halifax and Wakefield. However, some collections represent the complete surviving documentation of an estate, project or

event. For example the 1948 papers of the Hardcastle Craggs Preservation Committee, the working papers of the Upper Calder Valley History Group that produced Pennine Valley, or the large collections of papers rescued from Sutcliffe Solicitors and Stonesheygate. Browsing through these boxes turns up all sorts of interesting information on local estate and textile operations as well as property transactions.

While the contents of the Archive can be browsed on the Society's website using the catalogue, there is nothing like coming and having a look yourself. If you want to read a local publication the chances are that we have a copy that you can borrow. If you would like to look at some original documents you would be very welcome. If you would like to ask a question or discuss how to approach a particular topic of research we will do our best to help and advise. For example, we were able to provide a recent enquirer with drawings and deeds relating to Upper and Lower Lumb Mills. Someone else wanted to know when the name Old Town was first noted. Another, whether we had a picture of Mt Zion Primitive Methodist in Mytholmroyd. What do you want to know...??

**Why not take full advantage of your membership and use the facilities that the Society's Archive offers?
Book for a guided visit on the Open Day on Saturday, 26th October by returning the flyer in this newsletter.**

Places limited – first come, first served!

The opening times of the Archive are on page 2.

Other Events

A History of the Rochdale Canal

Sunday 1st September 2:30 pm
Thursday 5th September 10:30 am.

Led by Diana Monahan, an easy walk from Hebble End to Fallingroyd Tunnel, which is about 1.5 miles and wheelchair friendly. It could take up to 1½ hours because Diana will stop, talk and show pictures at various points along the way.

People could return to the starting point by bus or walk back with Diana along an alternative route.

Meet at the Alternative Technology Centre on the towpath, just east of Hebble End Bridge, where there is a café.

Heritage Open Days: 12 – 15 September 2013

Local attractions

Gibson Mill: Thursday, Saturday and Sunday 11 – 6 pm

Heptonstall Museum: Saturday and Sunday 11 – 6 pm

Todmorden Hippodrome Saturday 10 – 4 pm (film at 2.30)

Todmorden Unitarian Church Saturday and Sunday 10 – 4 pm

Wainsgate Chapel, Old Town, HX7 8SU

Sunday 15th September 1pm – 4 pm
including the opportunity to hear the organ being played.

More information: <http://www.heritageopendays.org.uk/>

Quick Guide to the 2013 – 2014 Winter Programme

2013

25 September	Cartographic Crimes	<i>Tony Morris</i>
9 October	History of Moderna	<i>Joan Laprell</i>
23 October	Local History AGM Witchcraft in Upper Calder	<i>John Billingsley</i>
30 October	Lit + Sci AGM <i>followed by</i> How the Digital Archive has changed	
13 November	Withins Reservoir	<i>Shirley Daniel</i>
27 November	Postcard from Sunny Bunces'	<i>Chris Helme</i>
11 December	Sam Hill of Making Place	<i>Anne Kirker</i>

2014

8 January	Historic Buildings and their repair	<i>Alan Gardner</i>
22 January	C17 Buildings :craftsmen and patrons	<i>David Cant</i>
12 February	Quarrying in Calderdale	<i>George Bowers</i>
26 February	Industrialisation of the Calder Valley	<i>Steve Caunce</i>
12 March	Yorkshire Life between the wars	<i>Ian Dewhirst</i>
26 March	Parliamentary Enclosure in the Calder Valley	<i>Sheila Graham</i>

Membership Subscription for 2013/14 remains at £12 and is due at the beginning of September.

Please send your cheque, payable to 'Hebden Bridge Local History Society' with your name, address, phone number, email address and membership number (if known) to

**Rachel Smith, Membership Secretary, Bramble Dene,
Moss Lane, Hebden Bridge, HX7 7DS**

Alternatively you can renew membership at a meeting. Membership cards for the 2013-14 season will be issued at meetings if possible to save postage.