

HEBDEN BRIDGE LOCAL HISTORY SOCIETY NEWS

www.hebdenbridgehistory.org.uk

FOUNDED 1949

WINTER PROGRAMME 2010 – 2011



Richard Oastler 1789 - 1861

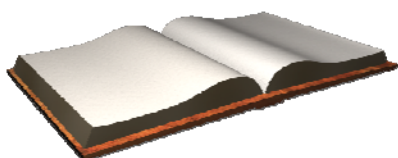
When Dr John Hargreaves gives his lecture, '*Richard Oastler, Yorkshire Slavery and the Mill Owners of the Calder Valley*' on 29th September it will be 180 years to the day that Richard Oastler penned his famous letter to the *Leeds Mercury* on 'Yorkshire Slavery'

Reminder - Membership Renewal Now Due

See page 12

HEBDEN BRIDGE LOCAL HISTORY SOCIETY
THE BIRCHCLIFFE CENTRE
BIRCHCLIFFE ROAD
HEBDEN BRIDGE HX7 8DG

Secretary: Diana Monahan - 01422 845982 - secretary@hebdenbridgehistory.org.uk



Archive Opening Times 2010

	Wednesday	Saturday
	2 - 5 pm	10 am - 1 pm
September	8th	25th
October	13th	23rd
November	11th	27th
December	8th	19th

Receive your Newsletter via email

Every year we use a large amount of paper and ink printing this newsletter. If you have an email address and would like to save the Society some money, as well as help the environment, then why not receive future newsletters and other updates electronically.

Simply email membership@hebdenbridgehistory.org.uk with your name and membership number and leave the rest to us.

Newsletters will be posted on our Website, so if you prefer to download at your own convenience please let us know and we will email you when they are available at www.hebdenbridgehistory.org.uk

**EMAIL ADDRESSES WILL ONLY BE USED FOR THE PURPOSES DESCRIBED
AND WILL NOT BE PASSED ON TO THIRD PARTIES**

N.B. There will still be hard copies available for people who do not have access to the Internet or who still prefer a printed copy.

All events take place at Hebden Bridge Methodist Hall, Market Street (unless otherwise stated) and start at 7.30pm

29TH SEPTEMBER

DR JOHN A. HARGREAVES

Richard Oastler, Yorkshire Slavery and the Mill Owners of the Calder Valley

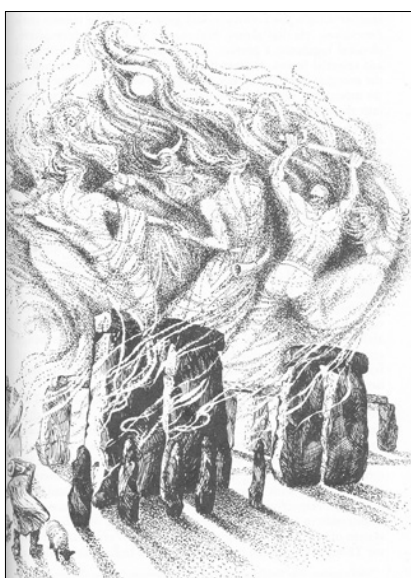
180 years to the day Richard Oastler penned his famous letter from Fixby to the *Leeds Mercury* on 'Yorkshire Slavery' highlighting the evils of child labour in the worsted mills of Bradford, and comparing conditions to those which had been experienced by slaves in the sugar plantations of the West Indies. The letter re-invigorated the campaign for the regulation of child labour across the Yorkshire Pennines textile belt, and encountered strong opposition as well as support in the Calder Valley. The lecture also coincides with the publication of a new book on *Yorkshire Slavery*, which Dr Hargreaves is editing with Hilary Haigh for the University of Huddersfield and follows a well-attended conference at which John Hargreaves spoke in 2007.



Currently Editor of the Transactions of the Halifax Antiquarian Society and its Vice-President, our speaker is also Chair of Halifax Civic Trust and Visiting Research Fellow in History at the University of Huddersfield and Visiting Lecturer at Leeds Trinity University College.

13TH OCTOBER

JEREMY HARTE



Huge and Mighty Forms: The giant's castle in landscape tradition

Medieval people saw civilisation as something precariously built amongst the ruins left by giants. Traces of a former world revealed themselves in different ways – from greatness to monstrosity, from subtle craft to diabolical arts, from heroism to cannibalism. In the world of early antiquaries as in that of *Beowulf*, the word 'giant' was never an innocent reference to great size or strength, but spoke uncomfortably of fallen power and perversion.

The legends of giants attached to Yorkshire's hillforts and megaliths have a long and unsettling prehistory.

Jeremy Harte is a researcher into the overlap between folklore and the landscape, especially places of encounter with the supernatural. His books include Cuckoo Pounds and Singing Barrows, The Green Man, English Holy Wells and Explore Fairy Traditions. He trained as a museum professional, and is curator of the Bourne Hall Museum.

27TH OCTOBER

AGM



Local History AGM*

Followed by Justine Wyatt
A Hebden Bridge Childhood
Joseph Greenwood's Reminiscences

Joseph Greenwood's reminiscences bring to life some of the social history of the valley. There are stories about local people and events, a description of visiting Halifax for the first time carrying his father's piece, and of how he began fustian cutting for a neighbour aged about 9. Written in the early 1900s when he had become well known as one of the founders the Nutclough Fustian Cooperative, the reminiscences provide a fascinating picture of life in the area going back to the 1830s.

Justine works at the Alternative Technology Centre and is the Co-ordinator of a lottery funded 'Our Heritage' project, looking at the development of the textile industry in the Hebden Bridge area.

**Nominations for committee members and any matters members wish to raise are invited on p10. Committee meetings for 'Local History' are usually the 3rd Wednesday of alternate months.*

3RD NOVEMBER

AGM

Literary & Scientific Society AGM*

Followed by John Billingsley
The Day the Sun Went Out:
The 1927 solar eclipse in Yorkshire and elsewhere

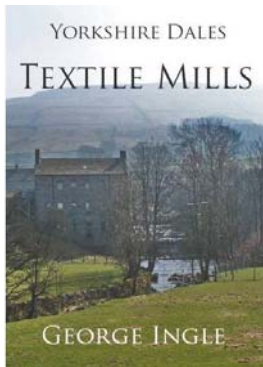


Well-known local historian and long serving member of our Committee, John looks at the total solar eclipse of 29 June 1927. His latest book, West Yorkshire Folk Tales, will be available from the publications desk at the rear of the hall.

**Nominations for committee members and any matters members wish to raise are invited on p10.*

10TH NOVEMBER

GEORGE INGLE



Yorkshire Dales Textile Mills

Today the Yorkshire Dales' industries are farming, tourism and quarrying. However, towards the end of the eighteenth century, hand-spinners in most Dales villages were working for the Bradford and Keighley worsted manufacturers. When cotton spinning was mechanised the Dales were scoured for suitable water power sites for the new mills. Worsted and flax mills followed, as well as silk and eventually rayon. Mills were built, for example, in Arncliffe, Burnsall, Blubberhouses and Malham, where today we see few signs of their industrial legacy.

Over 70 mills will be described in areas around Skipton, Settle and Sedbergh, Wharfedale and Littondale, together with the Washburn Valley, Wensleydale and Swaledale.

After a career in vocational education George Ingle has written several books and articles on Yorkshire's textile history based on years of detailed research. He lives in Ilkley and is secretary of the Upper Wharfedale National Trust Volunteer Group, working with them as a dry-stone waller.

24TH NOVEMBER

VARIOUS SPEAKERS

Bridging Centuries



An evening focusing on the 500th anniversary of the Old Bridge but also looking at other bridges in the Upper Calder Valley on rivers and becks. Various people will be making contributions which will include modern images as well as a chance to see the old glass lantern slides using the Local History Society original magic lantern.

8TH DECEMBER

EDWARD ROYLE



Religion and the People in the Upper Calder Valley in the age of religious revival

The parish of Halifax played an important part in the religious revival which spread across England in the second half of the eighteenth century. This lecture will explore that revival

locally and assess its impact on the nature and extent of religious observance in the century leading up to the 1851 Census of Worship.

Edward Royle is an Emeritus Professor of History at the University of York. He was born and brought up in the Colne Valley and has published extensively on the social history of Britain since the eighteenth century, with a special interest in Yorkshire religion.

12TH JANUARY

ALAN PETFORD

The Buildings of Hebden Bridge

We investigate the rich variety of building in Hebden Bridge, from 18th century chapel to late nineteenth century railway architecture, including the fascinating diversity of houses built for ordinary people.

Our speaker tonight is a part-time Lecturer in Local and Regional History at the University of Leeds and a WEA lecturer.

26TH JANUARY

GEORGE REDMONDS



West Yorkshire Place-Names in Context

The meaning of many of our obscure minor place-names emerges when we study them in their chronological context and in the landscape.

George Redmonds is the author of numerous books on name topics, lectures widely on the subject and in 2001 he presented the BBC Radio 4 series Surnames, Genes and Genealogy.

9TH FEBRUARY

NOEL COATES

The Lancashire & Yorkshire railway

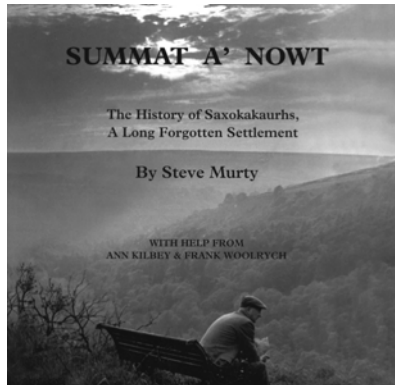
Beginning with the growth of the L&Y from 1847-1900, Noel will go on to give some facts about the size of the Company in 1921, before moving on to show what the railway looked like 90 years ago. The talk concludes with a few local views from both L&Y and more recent times.



Our speaker became interested in railways in November 1959 when he visited an engine shed at Rose Grove to take some numbers with school friends. He later moved across to photography, railway modelling and eventually research and book compiling.

23RD FEBRUARY

STEVE MURTY



Summat about Nowt

What's not in t'book!

Steve, with his lifelong interest in local history, has been a member of our Society for many years and is currently its Vice President.

In his talk this evening Steve will take a look at what he didn't manage to get into his popular book *Summat A' Nowt*, a personal look at the history of the Calder Valley and in particular his home at Stubb.

9TH MARCH

GLYN LEE

Discovering Lumbutts and Mankinholes



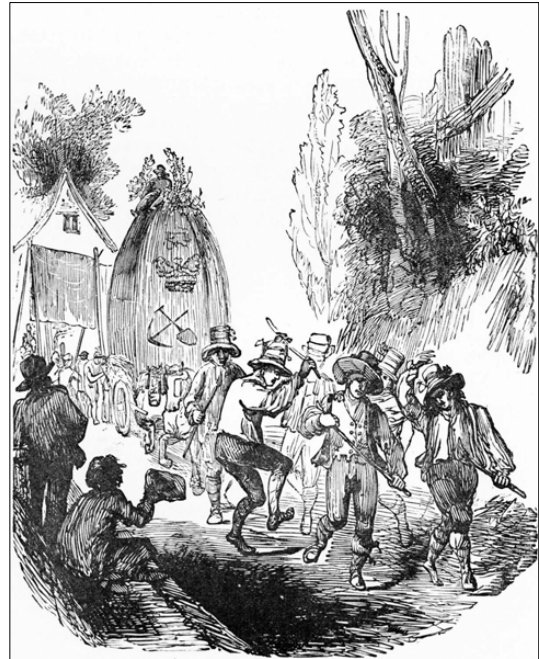
A pictorial journey through these historic Calderdale communities on the hillside above Todmorden.

Glyn has been a member of our Society for over 35 years; author of two Calderdale books and the scriptwriter and presenter of six popular historic walking films of Calderdale.

Rushbearing

The purpose of this presentation is not intended to be a comprehensive study of Rushbearing but rather to provide, for the uninformed, a background against which may be set all that is currently known about Rushbearing in the Calderdale area.

Garry was born in Halifax and is now a retired teacher; he has had a variety of occupations but has always lived and worked in Calderdale. For almost forty years he has had more than a passive interest in folk traditions and local history.



Through this and his interest and involvement in traditional dance he was, in 1977, instrumental in the revival of the Rushbearing Festival in Sowerby Bridge and has remained active with the organisation. He continues to dance Yorkshire longsword, and is still involved with various community groups in Sowerby Bridge.

FAMILY HISTORY GROUP

BARBARA ATACK

The group continues to meet twice a month (most months) at Birchcliffe on a Thursday and a Saturday afternoon. This year we have welcomed several new members who have joined our sessions alongside our small core group of seasoned genealogists. Thanks to the acquisition of another room at The Birchcliffe Centre, we now have more space and access to three computers. The new room, known as the Map Room, also contains a large map chest which houses large scale local maps which have proved very popular with our members. The Alice Longstaff Gallery Collection and other photographs is now more accessible and local members have enjoyed the opportunity to browse and identify some of the photographs.

We always enjoy seeing new faces. Do come and join us for a chat about genealogy or advice about your own research. You will be very welcome.

Monumental Inscriptions

We have nearly completed the transcriptions of the graves in Heptonstall churchyard. Our hope is to be able to update our own web site very soon and also for the transcriptions to be published by Calderdale Family History Society.

There are still about 100 graves to transcribe and so we would welcome any help. The next proposed session at Heptonstall is on the morning of **Thursday 16th September** from **10:30** until **12:30**. If you would like to be part of this project but are unable to come on that date, a section of the graveyard can be designated for you to transcribe in your own time. We then need to think which graveyard to tackle next. Several are in a bad state and it is possible we need to do the work before they become completely overgrown.

For more details of either the Family History Group or the Monumental Inscriptions please contact:-

Barbara Atack ataxjb@btinternet.com Tel: 01422842105

BATTLE OF HEPTONSTALL
REPORT BY DIANA MONAHAN



Back in March 2009, whilst working with some local cubs, I found out that every summer they go for a local history walk around Hebdon Bridge and finish at the Old Bridge when they are told about the Battle of Heptonstall. At about the same time a group of people came together to look at how we could celebrate the 500th birthday of the Old Bridge in 2010. I was the Local History Society's representative on Bridge500 group, and it occurred to me that we could have a Battle of Heptonstall as part of the celebrations.

There were many times during the next year when I regretted that thought – management plan, fund raising etc. News of the successful Rural Development Grant came very close to deadlines that had to be met for the event to proceed. But in the end I really enjoyed the whole weekend; the crowds that came were so well-behaved, not even any litter, and their participation was wonderful. It was lovely working with so many local groups, and the weather was kind, no chance of recreating the foul November weather of the original battle. The Lilburnes Regiment of the Sealed Knot was very organised. There were no lost children, no casualties for the first aiders to deal with, and as the river was the lowest I had ever seen it there was no need to put the flood plans into place. The weekend was a great success!

If you want to see some photos of the two days, there are some at local history member, Craig Shaw's website.

www.bluplanetphoto.co.uk/Events/Events-2010

Mark Simmond's also took some photographs, these can be found at:

www.flickr.com/photos/eggstuff/sets/72157624370930171

COMMITTEE NOMINATIONS & ITEMS FOR THE AGENDA

Any items/proposals for discussion at the AGM and any nominations for Officers or committee members should reach the secretary by 7th October 2009.

Mrs. Diana Monahan
7 New Road, Hebden Bridge HX7 8AD

Email: secretary@hebdenbridgehistory.org.uk

If you wish to nominate someone for the committee of either the '*Hebden Bridge Local History Society*' or the '*Hebden Bridge Literary and Scientific Society*' and they are willing to stand then please complete and send the following information:

'Local History' AGM 27th October

'Literary and Scientific' AGM 3rd November (delete as required)

I wish to nominate _____

For the position of President/Secretary/Treasurer/Librarian/committee member (delete as required)

Proposer:

Membership number (if known)

Seconder:

Membership number (if known)

You can copy this page if you prefer

Agriculture and History in the Pennine Landscape

Tutors

Ian Bailey, David Cant, Alan Petford and Nigel Smith

NEW MEMBERS WELCOME

This is an exciting opportunity to join the third year of a continuing project which is exploring neglected aspects of local history within the ancient parish of Halifax from the late 17th century to the mid 20th century.

This course is about doing local history yourself. It not only provides a very rewarding experience but also the opportunity to contribute to new historical research leading to publication.

7.30 pm to 9.30 pm 27 September - 6 December

Upper Room, Hope Baptist Chapel, Hope Street, Hebden Bridge

**Course fees per 10 week term:
£55 for Local History Society members**

The research topics available for this term are:

- Images and memories of farming
- Population of Halifax parish
- Parliamentary Enclosure
- Wills and Inventories

During this 10 week course there will be lectures by guest speakers actively engaged in research. Topics to be covered include:

- Local dialect
- Landscapes of leisure (Shibden Hall)
- Enclosure in Stainland and Old Linley

All events take place at Hebden Bridge Methodist Hall,
Market Street and start at 7.30pm

Quick Guide to 2010 - 2011 Winter Programme

2010		
29 September	Richard Oastler	John Hargreaves
13 October	Huge and Mighty Forms	Jeremy Harte
27 October	AGM - Local History	see page 3 for details of talk
3 November	AGM - Literary & Scientific	see page 3 for details of talk
10 November	Yorkshire Dales Textile Mills	George Ingle
24 November	Bridging Centuries	Various speakers
8 December	Religion and the People...	Edward Royle
2011		
12 January	The Buildings of Hebden Bridge	Alan Petford
26 January	Place-Names	George Redmonds
9 February	The Lancashire & Yorkshire railway	Noel Coates
23 February	Summat A'Nowt	Steve Murty
9 March	Discovering Lumbutts & Mankinholes	Glyn Lee
23 March	Rushbearing	Garry Stringfellow

You can find more about these events, and a whole lot more, visit your website: www.hebdenbridgehistory.org.uk

The membership subscription for 2010/11 remains at £12 and is now due.

To renew your subscription please post your cheque, made payable to "*Hebden Bridge Local History Society*", together with a note of your name, address, telephone number, email address and membership number (if known), to the Membership Secretary:

Rachel Smith
Bramble Dene, Moss Lane
Hebden Bridge HX7 7DS

Alternatively you may renew your membership at a meeting when you will be issued with your new membership card.