

INSTINCT ALLOY



REGISTER / ENREGISTRER / REGISTRA / REGISTRIERE

Registering your bike is the official way for us to welcome you into the Rocky Mountain family. It's also an important step in activating your bike's warranty. If you ever have an issue, we'll be able to handle your case efficiently and get you back riding as soon as possible. It's easy and only takes a few minutes.

Register your bike: bikes.com/registration

L'enregistrement de votre vélo marque votre entrée officielle dans la famille Rocky Mountain, et c'est une étape importante pour en activer la garantie. Ainsi, en cas de problème, nous pourrions le régler efficacement pour vous faire remonter en selle aussitôt que possible. L'enregistrement est facile et ne prend que quelques minutes.

Enregistrer votre vélo : bikes.com/registration

La procedura di registrazione della tua bicicletta è il modo ufficiale di accoglierti nella famiglia Rocky Mountain. È inoltre una tappa importante per attivare la garanzia della tua bicicletta. Nel caso in cui si verificasse un problema, potremo gestire il tuo caso in maniera efficiente e farti risalire in sella il più presto possibile. La procedura di registrazione è semplice e richiede solo alcuni minuti.

Registra la tua bicicletta: bikes.com/registration

Wenn du dein Bike registrierst, können wir dich offiziell in der Rocky Mountain Familie willkommen heißen. Es ist auch ein wichtiger Schritt für die Aktivierung der Garantie deines Bikes. Solltest du irgendwann ein Problem haben, können wir deinen Fall effizient bearbeiten und dich schnellstmöglich wieder auf dein Bike bringen. Es ist einfach und dauert nur ein paar Minuten.

Registrierte dein Bike: bikes.com/registration

TABLE OF CONTENTS

Introduction	4
Shrediquette	4
Getting to know your bike	5
Basic setup	6
Shock eyelet bearing	7
Shock setup	8
RIDE-9	12
RM two-position axle	13
UDH Hanger	14
Cable routing how-to	15
Critical dimensions	19
Pro tips & tricks	20
Exploded view	20
Full list of parts	20
Small parts kit	20
Warranty information	21

INHALTSVERZEICHNIS

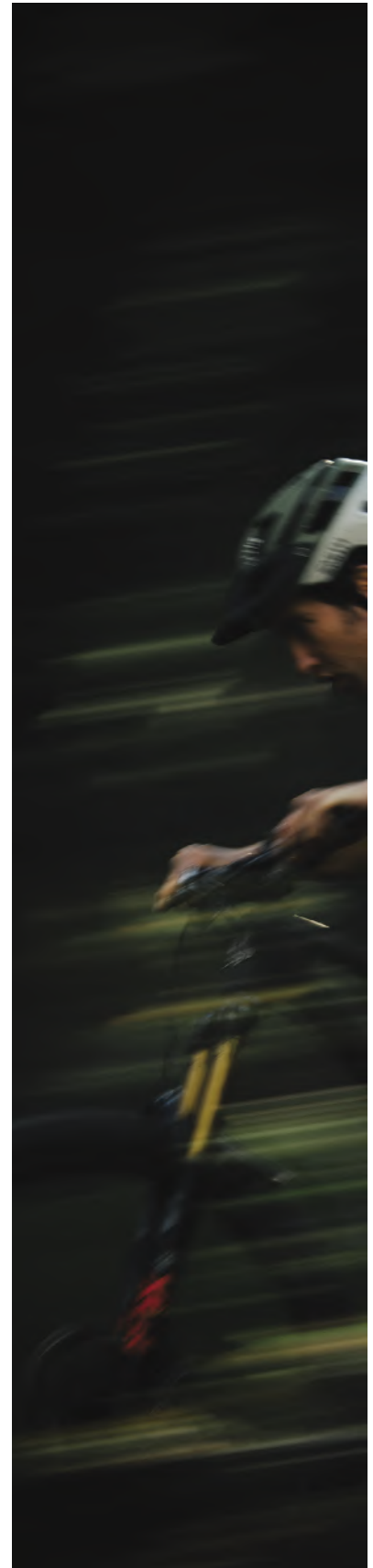
Einleitung	42
Mountainbike-Knigge	42
Lerne dein Bike kennen	43
Grundeinstellung	44
Dämpfer-Lagerbuchsen	45
Dämpfereinstellung	46
RIDE-9	50
RM Zwei-Positions-Achse	51
UDH Schaltauge	52
Kabelführung	53
Wichtige Abmessungen	57
Tipps & Tricks vom Profi	58
Explosionszeichnung	58
Vollständige Teileliste	58
Kleinteilesatz	58
Garantieinformationen	59

TABLE DES MATIÈRES

Introduction	23
Étiquette de la montagne	23
Survol de votre vélo	24
Configuration de base	25
Paliers d'amortisseur à œillet	26
Ajustement de l'amortisseur	27
RIDE-9	31
Axe RM à deux positions	32
Support de dérailleur universel	33
Passage des câbles	34
Guide des dimensions	38
Trucs et astuces de pros	39
Vue explosée	39
Liste complète des pièces	39
Trousses de petites pièces	39
Garantie	40

INDICE

Introduzione	61
Shrediquette	61
Conoscere la tua bicicletta	62
Configurazione di base	63
Occhiello ammortizzatore	64
Schema di sospensioni	65
RIDE-9	69
Asse a due posizioni RM	70
Forcellino UDH	71
Come configurare i cavi	72
Guida alle dimensioni	76
Trucchi e consigli professionali	77
Esploso	77
Lista completa delle parti	77
Kit delle parti piccole	77
Informazioni sulla garanzia	78



INTRODUCTION

The Instinct has been the go-to bike for riders looking for a bike that does it all, and our most recent design takes that philosophy to the next level. The desire to ride faster and harder than ever is universal amongst riders, and the changes we've made to our Instinct take that to heart while maintaining peak efficiency. Updated geometry and frame features means that the Instinct is versatile and can adapted to meet any demands that you or the trail may have.

This manual contains important safety, maintenance, and user information. Read and understand it thoroughly before your first ride on your new Rocky Mountain bicycle. This material applies only to the specific platform you have chosen and should be used in conjunction with your Rocky Mountain Owner's Manual, which is included with your bike. Please read the Owner's Manual before your first ride. If you do not have a copy of the Owner's Manual, you can get it from your nearest authorized Rocky Mountain dealer.

SHREDIQUETTE

Riders

Always be courteous to other trail users. Use extra caution around domestic animals, such as dogs and horses. Give other trail users right-of-way in all situations, during both climbing and descending.

Trails

Only ride your bicycle on trails and paths sanctioned for bicycle use. Follow all local laws and regulations. As for all trail users, care should be taken to avoid impacts on the trail or environment. Do not skid on or modify trails.

Rider: Felix Burke
& Kevin Calhoun
Photo: Margus Riga
Location: Revelstoke



GETTING TO KNOW YOUR BIKE



Technical details

- Designed for long days in the saddle, the Instinct's refined carbon frame means it is light enough to enjoy your surroundings on the way up and tough enough to tackle any descent you throw at it
- The Ride-9™ adjustment system allows riders to quickly fine tune their geometry and suspension with a pair of Allen keys
- We've increased the reach, made the seat tube angle steeper, lengthened the chainstays, and designed for a 44mm offset fork on the 29" wheel equipped frames, and a 37mm offset on the 27.5" wheel equipped frames. The Instinct was designed for speed and efficiency, while maintaining its trail manners.
- Improved small bump compliance and reduced pedal kick, while providing increased mid-stroke sensitivity and end-stroke progression.
- New, smaller sealed bearings at the shock eyelet dramatically improve shock sensitivity (these are aftermarket shock compatible).
- The result is a sensitive yet supportive feeling platform that's dialed in for bottom out resistance with both coil and modern air shocks.
- Bearing shields throughout help prevent contamination from gnarly trail conditions or post-ride wash stations.
- Dual row bearings at the dropouts for a stiffer rear triangle.
- The fully enclosed internal routing on our carbon models and large open ports on alloy allow for easy cable and hose installations.
- Integrated downtube protector and shuttle guard.
- All frame sizes are water bottle compatible.

BASIC SETUP

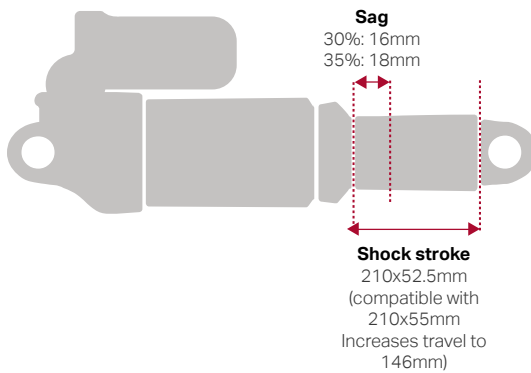
There are several variables that can be manipulated to fine tune the setup of your suspension. These are some basic guidelines to get you in the ballpark, and you should experiment to see what best suits you from there. The first step is to set your sag. Sag refers to how much the suspension moves under just the weight of the rider (including all riding accessories). Air pressure or coil spring rate and preload is adjusted until the desired amount of sag is measured.

Please observe the minimum and maximum amount of preload recommended by the manufacturer for a given coil spring. If you need to change the spring rate, please note you must remove the eyelet bearings to remove the coil spring.

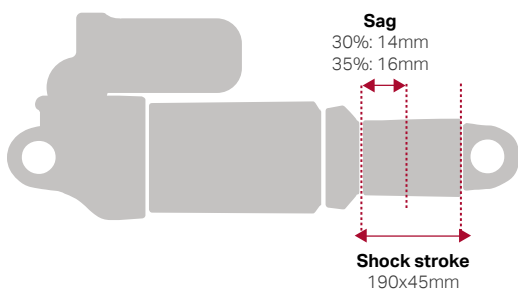
Shock sag

We recommend approximately 30–35% sag for this platform.

Regular Kinematic (Size MD - LG - XL)

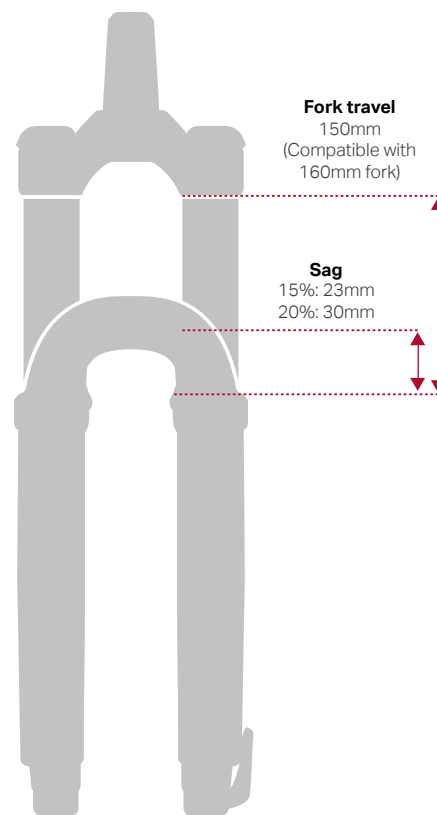


Light Kinematic (Size XS - SM)



Fork sag

We recommend approximately 15–20% sag for this platform.



SHOCK EYELET BEARING

Service

Your frame is equipped with cartridge bearings in the rear eyelet, allowing for better small-bump compliance. These bearings are carried by cups that have a very firm press fit into the shock shaft.



If you have your shock serviced, we highly recommend removing these components, as suspension service centres cannot guarantee they will be returned.

To remove the system, follow these steps:

- Use the Rocky Mountain Bearing Eyelet Tool Kit (Part# 1810031)
- Install the top hat piece on one side of the bearing eyelet
- Next, install one of the cup removal tools over the bearing cup with the top hat piece installed.
- Thread the M8 screw snugly against the top hat piece
- Install the other cup removal tool over the other bearing cup
- Thread the M8 screw all the way in until it starts pushing on the other side. It is contacting the inside of the top hat piece.
- Keep threading until one of the cups is full pushed out.
- Next insert the drift tool through the shock eyelet and rest it firmly against the bearing cup that is still pressed in the shock eyelet.
- Gently, but firmly, hammer the drift tool until the bearing cup is fully removed from the shock eyelet.

If you do not have the Rocky Mountain Bearing Eyelet Tool Kit, use a blind bearing puller:

- Use a blind bearing puller (8 mm extension) to remove both bearings.
- Remove the centre sleeve.
- Use the blind bearing puller (10 mm extension) to remove the empty cups.

NOTE: the inner diameter of the cups is 11 mm, which means the 12 mm extension won't fit (So don't force it); Use the 10 mm extension.

To install new cups, use a bearing press or vice with soft jaws installed, making sure to press on the outer edge of the cups, and don't forget the centre spacer sleeve between the cups.

INSTINCT SPRING CHART

Rebound

Rebound damping adjustment controls how quickly your suspension returns to full extension after it hits a bump. Too much rebound damping, which means clicking the rebound knob towards the slow setting, the fork or shock will move too slowly. This will cause the suspension to sink deeper and deeper into its travel under repeated hits, which will feel harsh. Too little rebound damping, which means clicking the rebound knob towards the fast setting, and the suspension can spring back too quickly, causing a loss of traction and control. Follow the manufacturer's recommendations for base settings, and experiment to find your happy place.

Compression

Low speed compression (LSC) controls rider weight shifts, pumping through terrain, G-outs, and other slow inputs. Too much LSC will result in a harsher ride feel; too little LSC will result in a ride feel that's too soft and unresponsive.

2021 Instinct 210x52.5 CANE CREEK DBIL COIL SHOCK *Count clicks from Closed: 0 Clicks = Closed*							
RIDER WEIGHT LBS / KG	VALT STEEL SPRING WEIGHT	VALT PROGRESSIVE SPRING WEIGHT	SHOCK SAG	RECOMMENDED LSR SETTING	RECOMMENDED HSR SETTING	RECOMMENDED LSC SETTING	RECOMMENDED HSC SETTING
100 / 45	Not Available	Not Available	16-18 mm	Not Available			
110 / 50	350		16-18 mm	14	2 3/4	13	2 3/4
120 / 55	350	400-488	16-18 mm	14	2 3/4	13	2 3/4
130 / 59	400		16-18 mm	13	2 1/2	12	2 1/2
140 / 64 *Size MD	400	400-488	16-18 mm	13	2 1/2	12	2 1/2
150 / 68	450	400-488	16-18 mm	12	2 1/4	11	2 1/4
160 / 73	450	450-550	16-18 mm	12	2 1/4	11	2 1/4
170 / 77	500	450-550	16-18 mm	11	2	10	2
180 / 82 *Size LG	500	500-610	16-18 mm	11	2	10	2
190 / 86	550	500-610	16-18 mm	11	2	10	2
200 / 91 *Size XL	550	Not Available	16-18 mm	10	1 3/4	9	1 3/4
210 / 95	600		16-18 mm	10	1 3/4	9	1 3/4
220 / 100	600		16-18 mm	9	1 1/2	8	1 1/2
230 / 105	650		16-18 mm	9	1 1/2	8	1 1/2
240 / 109	Not Available		16-18 mm	Not Available			
250 / 114			16-18 mm	Not Available			

2021 Instinct 190x45 Coil Shock *Count clicks from Closed: 0 Clicks = Closed*							
RIDER WEIGHT LBS / KG	VALT STEEL SPRING WEIGHT	VALT PROGRESSIVE SPRING WEIGHT	SHOCK SAG	RECOMMENDED LSR SETTING	RECOMMENDED HSR SETTING	RECOMMENDED LSC SETTING	RECOMMENDED HSC SETTING
100 / 45 *Size XS	300	Not Available	14-16 mm	14	2.75	13	2.75
110 / 50	350		14-16 mm	14	2.75	13	2.75
120 / 55 *Size SM	350		14-16 mm	13	2.5	12	2.75
130 / 59	400		14-16 mm	13	2.5	12	2.75
140 / 64	400		14-16 mm	12	2.25	11	2.75
150 / 68	450		14-16 mm	12	2.25	11	2.75
160 / 73	450		14-16 mm	11	2	10	2.75
170 / 77	500		14-16 mm	11	2	10	2.75

INSTINCT SPRING CHART

2021 INSTINCT 210X52.5 FOX DPX2 AIR SHOCK *Count clicks from Closed: 0 Clicks = Closed*

RIDER WEIGHT LBS / KG	FOX DPX2 PSI	SHOCK SAG	RECOMMENDED LSR SETTING	RECOMMENDED LSC SETTING *IF AVAILABLE
100 / 45	140	16-18 mm	12-13	Start open / Adjust to suit
110 / 50	150	16-18 mm	12	Start open / Adjust to suit
120 / 55	160	16-18 mm	11-12	Start open / Adjust to suit
130 / 59	170	16-18 mm	11	Start open / Adjust to suit
140 / 64	180	16-18 mm	10-11	Start open / Adjust to suit
150 / 68	190	16-18 mm	10	Start open / Adjust to suit
160 / 73	200	16-18 mm	8-10	Start open / Adjust to suit
170 / 77	210	16-18 mm	8	Start open / Adjust to suit
180 / 82	220	16-18 mm	7-8	Start open / Adjust to suit
190 / 86	230	16-18 mm	7	Start open / Adjust to suit
200 / 91	240	16-18 mm	7	Start open / Adjust to suit
210 / 95	250	16-18 mm	7	Start open / Adjust to suit
220 / 100	260	16-18 mm	5-6	Start open / Adjust to suit
230 / 105	270	16-18 mm	5	Start open / Adjust to suit
240 / 109	280	16-18 mm	2-3	Start open / Adjust to suit
250 / 114	290	16-18 mm	2	Start open / Adjust to suit

2021 INSTINCT 190X45 FOX DPX2 AIR SHOCK *Count clicks from Closed: 0 Clicks = Closed*

LBS / KG	FOX DPX2 PSI	SHOCK SAG	RECOMMENDED LSR SETTING	RECOMMENDED LSC SETTING *IF AVAILABLE
100 / 45	150	14-16 mm	12	Start open / Adjust to suit
110 / 50	160	14-16 mm	11-12	Start open / Adjust to suit
120 / 55	170	14-16 mm	11	Start open / Adjust to suit
130 / 59	180	14-16 mm	10-11	Start open / Adjust to suit
140 / 64	190	14-16 mm	10	Start open / Adjust to suit
150 / 68	200	14-16 mm	8-10	Start open / Adjust to suit
160 / 73	210	14-16 mm	8	Start open / Adjust to suit
170 / 77	220	14-16 mm	7-8	Start open / Adjust to suit

INSTINCT SPRING CHART

2021 INSTINCT 210X52.5 FOX DPS+ FLOAT X AIR SHOCK *Count clicks from Closed: 0 Clicks = Closed*

RIDER WEIGHT LBS / KG	FOX DPS PSI	SHOCK SAG	RECOMMENDED LSR SETTING	RECOMMENDED LSC SETTING *IF AVAILABLE
100 / 45	120	16-18 mm	10-11	Start open / Adjust to suit
110 / 50	130	16-18 mm	10	Start open / Adjust to suit
120 / 55	140	16-18 mm	9-10	Start open / Adjust to suit
130 / 59	150	16-18 mm	9	Start open / Adjust to suit
140 / 64	160	16-18 mm	8-9	Start open / Adjust to suit
150 / 68	170	16-18 mm	8	Start open / Adjust to suit
160 / 73	180	16-18 mm	7-8	Start open / Adjust to suit
170 / 77	190	16-18 mm	7	Start open / Adjust to suit
180 / 82	200	16-18 mm	6-7	Start open / Adjust to suit
190 / 86	210	16-18 mm	6	Start open / Adjust to suit
200 / 91	220	16-18 mm	5-6	Start open / Adjust to suit
210 / 95	230	16-18 mm	5	Start open / Adjust to suit
220 / 100	240	16-18 mm	4-5	Start open / Adjust to suit
230 / 105	250	16-18 mm	4	Start open / Adjust to suit
240 / 109	260	16-18 mm	3-4	Start open / Adjust to suit
250 / 114	270	16-18 mm	3	Start open / Adjust to suit

2021 INSTINCT 190X45 FOX DPS AIR SHOCK *Count clicks from Closed: 0 Clicks = Closed*

LBS / KG	FOX DPS PSI	SHOCK SAG	RECOMMENDED LSR SETTING	RECOMMENDED LSC SETTING *IF AVAILABLE
100 / 45	130	14-16 mm	10	Start open / Adjust to suit
110 / 50	140	14-16 mm	9-10	Start open / Adjust to suit
120 / 55	150	14-16 mm	9	Start open / Adjust to suit
130 / 59	160	14-16 mm	8-9	Start open / Adjust to suit
140 / 64	170	14-16 mm	8	Start open / Adjust to suit
150 / 68	180	14-16 mm	7-8	Start open / Adjust to suit
160 / 73	190	14-16 mm	7	Start open / Adjust to suit
170 / 77	200	14-16 mm	6-7	Start open / Adjust to suit

INSTINCT SPRING CHART

2021 INSTINCT 210X52.5 ROCK SHOX DELUXE AIR SHOCK *Count clicks from Closed: 0 Clicks = Closed*

RIDER WEIGHT LBS / KG	DELUXE PSI	SHOCK SAG	RECOMMENDED LSR SETTING	RECOMMENDED LSC SETTING *IF AVAILABLE
100 / 45	100	16-18 mm	8	Start open / Adjust to suit
110 / 50	110	16-18 mm	8	Start open / Adjust to suit
120 / 55	120	16-18 mm	7-8	Start open / Adjust to suit
130 / 59	130	16-18 mm	7-8	Start open / Adjust to suit
140 / 64	140	16-18 mm	7	Start open / Adjust to suit
150 / 68	150	16-18 mm	6-7	Start open / Adjust to suit
160 / 73	160	16-18 mm	6-7	Start open / Adjust to suit
170 / 77	170	16-18 mm	6	Start open / Adjust to suit
180 / 82	180	16-18 mm	5-6	Start open / Adjust to suit
190 / 86	190	16-18 mm	5-6	Start open / Adjust to suit
200 / 91	200	16-18 mm	5	Start open / Adjust to suit
210 / 95	210	16-18 mm	4-5	Start open / Adjust to suit
220 / 100	220	16-18 mm	4-5	Start open / Adjust to suit
230 / 105	230	16-18 mm	4	Start open / Adjust to suit
240 / 109	240	16-18 mm	3-4	Start open / Adjust to suit
250 / 114	250	16-18 mm	3-4	Start open / Adjust to suit

2021 INSTINCT 190X45 ROCK SHOX DELUXE AIR SHOCK *Count clicks from Closed: 0 Clicks = Closed*

LBS / KG	DELUXE PSI	SHOCK SAG	RECOMMENDED LSR SETTING	RECOMMENDED LSC SETTING *IF AVAILABLE
100 / 45	130	14-16 mm	8	Start open / Adjust to suit
110 / 50	140	14-16 mm	7-8	Start open / Adjust to suit
120 / 55	150	14-16 mm	7-8	Start open / Adjust to suit
130 / 59	160	14-16 mm	7	Start open / Adjust to suit
140 / 64	170	14-16 mm	6-7	Start open / Adjust to suit
150 / 68	180	14-16 mm	6-7	Start open / Adjust to suit
160 / 73	190	14-16 mm	6	Start open / Adjust to suit
170 / 77	200	14-16 mm	5-6	Start open / Adjust to suit

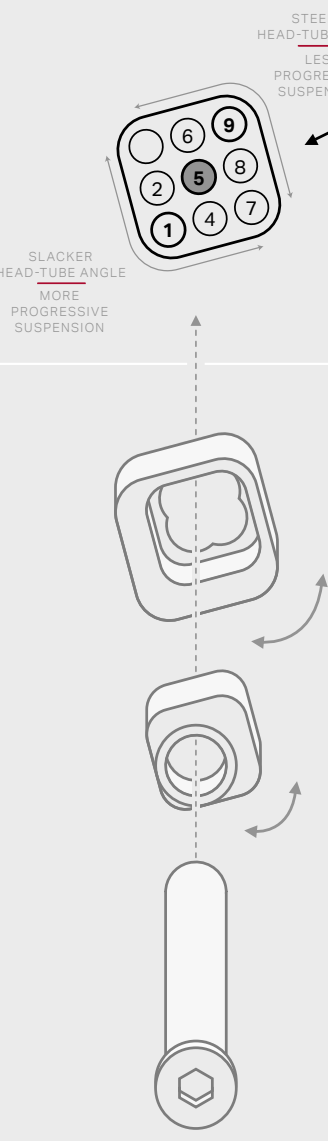
RIDE-9

The RIDE-9™ adjustment system allows riders to quickly fine tune their geometry with a pair of Allen keys. Nine configurations are possible thanks to a pair of rotating chips. Geometry setup is a complex artform with huge variables in rider style, preference, terrain, and ability. We do recommend the use of professional services, but we also believe that learning to dial in your own bike is the best way to fully understand its performance. When adjusting your RIDE-9 position, make gradual, incremental changes, take notes, and be methodical. Don't adjust in a hurry before a big ride. Take your time and enjoy the process.

Go [HERE](#) to download the full guide.


READY FOR ANY TRAIL

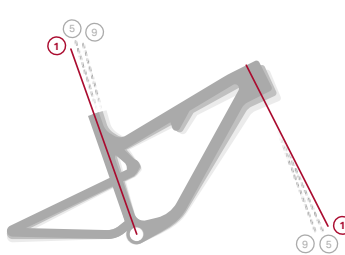
The RIDE-9™ adjustment system allows you to quickly fine-tune your geometry and suspension with a pair of Allen keys.




STEEPER HEAD-TUBE ANGLE
 LESS PROGRESSIVE SUSPENSION

SLACKER HEAD-TUBE ANGLE
 MORE PROGRESSIVE SUSPENSION

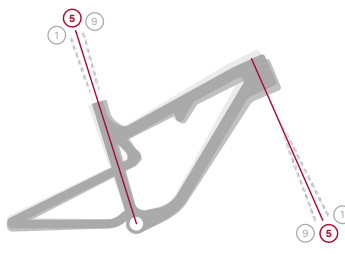





Position 1

 SLACK

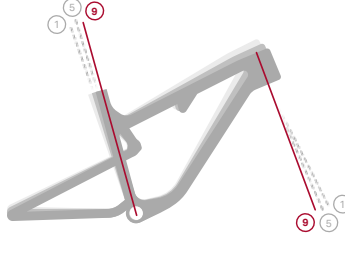
Stability at high speeds. Recommended for more aggressive trail riding.




Position 5

 NEUTRAL

Balanced handling and stability.



Position 9

 STEEP

Quicker handling. Recommended for better climbing traction.

RM TWO-POSITION AXLE USER MANUAL

The 2021 Instinct frame, in both alloy and carbon, is equipped with a 2-position axle dropout. This allows the user to choose a short or long rear-center length that suits their personal preferences. To match the position of the rear axle to the brake caliper, the frame is also equipped with a unique Rocky Mountain brake adapter. It is designed to fit both axle positions and ensure that the brake caliper is properly positioned in relation to the rotor with maximum clamping surface area. This adapter comes with laser etched instruction regarding its required mounting orientation in relation to the chosen axle position.

Short ----> FWD means the arrow should be pointing forward when the axle is in the short position.



Long ----> FWD means the arrow should be pointing forward when the axle is in the long position.



UDH HANGER

Your new frame is compatible with Sram's UDH hanger. Due to the two-position axle design, as well as our axle design, there are three pieces of information to consider for proper UDH function:

1. The UDH hanger is only compatible with the frame in the long axle position. Since the UDH hanger is meant to rotate as part of Sram's design to protect the rear derailleur, the long position is the only suitable position that allows the derailleur to rotate fully without contacting the frame.

2. The installation of a UDH hanger requires the use of the UDH Stopper (item #65 in the Full List of Parts) to limit the rotation amount.

3. The UDH hanger is only compatible with the SRAM Maxle Stealth Rear Thru Axle - 12x148, 171.5mm Length, part number 00.4318.005.033

1.

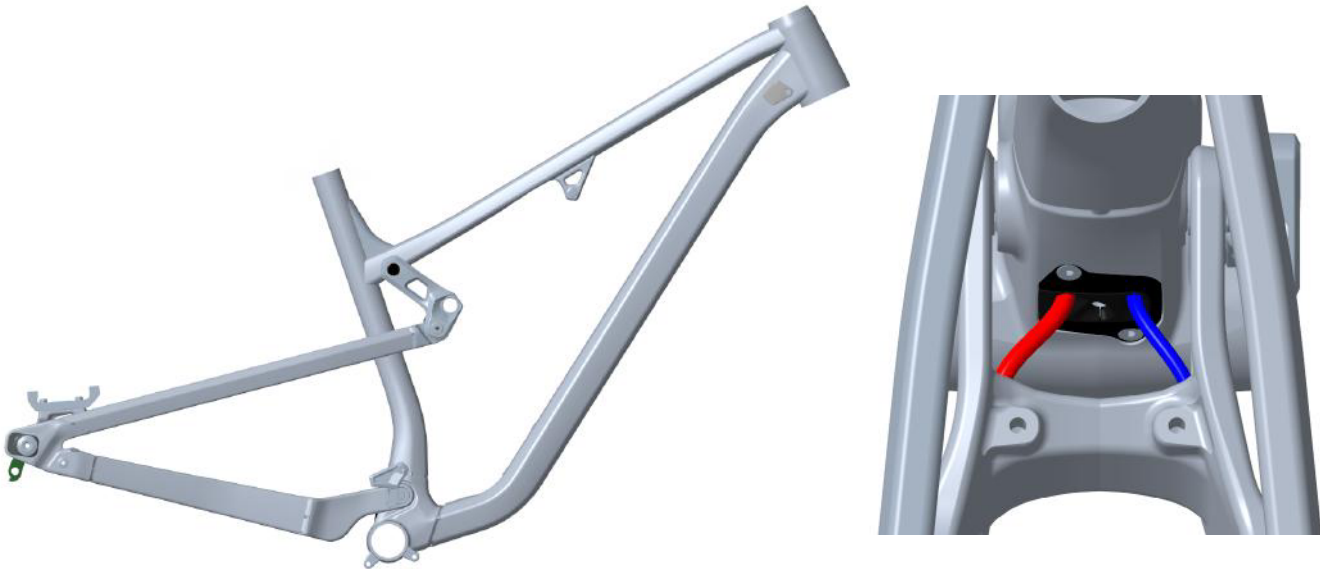


2.



CABLE ROUTING HOW-TO

Removing the rear wheel and rear shock will allow you to cycle the rear triangle and give better access to direct the housing in the area between the chain stay and main pivot. Cycling the rear triangle as you push the housing forward also reduces friction as the housing moves through the bottom bracket port.



REPLACING/INSTALLING REAR DERAILLEUR CABLE HOUSING

1. Remove non-drive side head tube port cover.

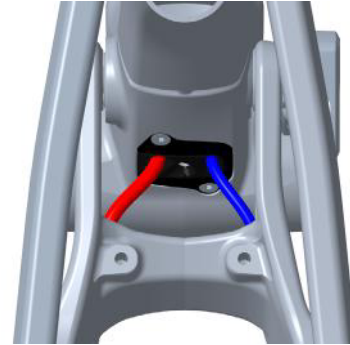


2. If replacing the old housing, cut a new piece to the same length. If you don't have the old piece, approximate the length required and cut a slightly longer portion.

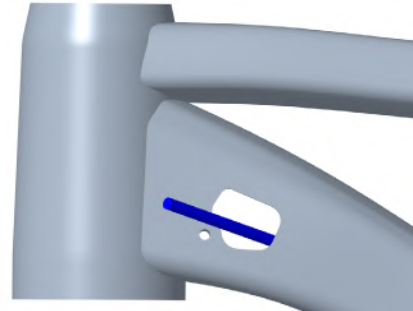
3. Beginning from the rear of the bike, begin feeding the housing into the cable opening on the drive side chain stay. Push the cable forward and simultaneously twist the housing.



4. Guide the housing into the housing port above the bottom bracket. Make sure you insert the derailleur housing into the port labeled "Shift."

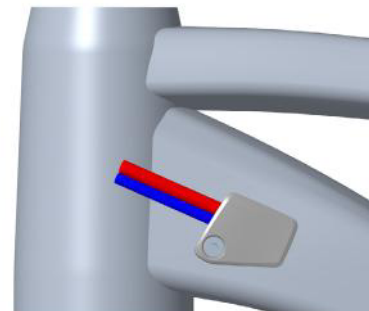


5. Push the cable from the rear until it appears at the head tube port. Fish it out with a pick or a bent spoke.



6. Install the foam sleeve over the housing. You will need to push the foam down the housing until the foam is fully inserted inside the frame.

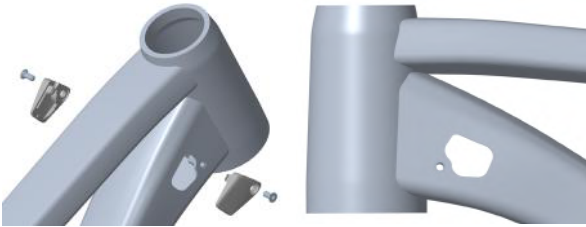
7. Once the housing is installed, re-install the headtube port.



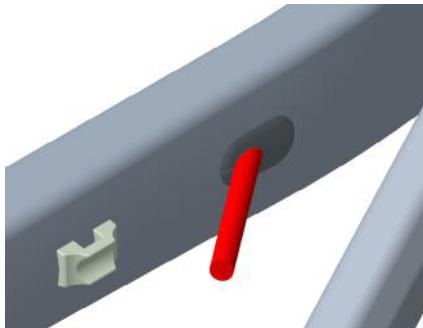
REPLACING/INSTALLING REAR HYDRAULIC BRAKE HOSE

Note: The instructions listed below are for a hydraulic brake with the hose attached to the caliper but not lever. Lever will have to be reconnected and bled according to manufacturing specifications once hose has been installed.

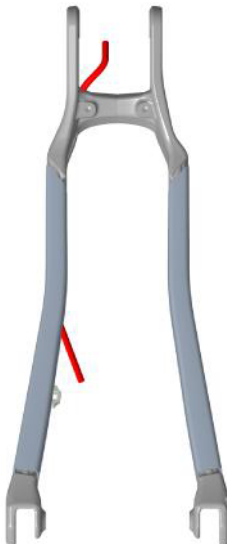
1. Remove non-drive side head tube port cover for standard rear brake lever position (Right-hand side) or drive side head tube port cover for moto / reverse rear brake lever position (left-hand side).



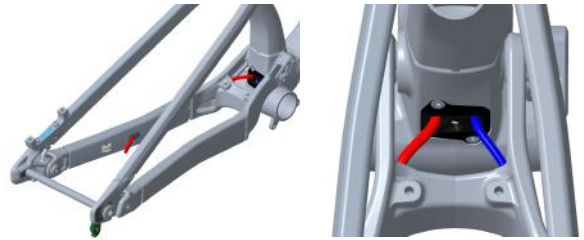
2. Place the rubber grommet onto the hydraulic hose and slide it back towards the brake caliper. Ensure the grommet is in the correct orientation.



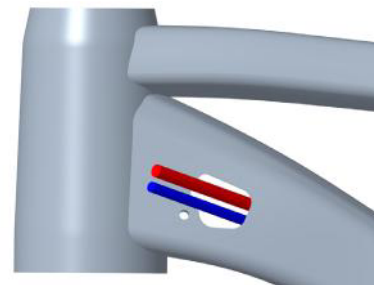
3. Push the hose forward and simultaneously twist the hose until it comes out at the forward end of the chain stay



4. Guide the brake hose into the housing port above the bottom bracket. Make sure you insert the brake housing into the port labeled "Brake". Any brake port will do.

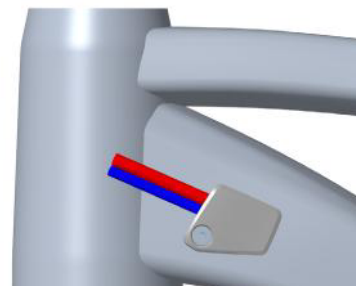


5. Push the brake hose from the rear until it comes out at the head tube port. Fish it out with a pick or a bent spoke.



6. Before you re-attach the hose to the brake lever, install the foam sleeve over the hose. You will need to push the foam housing down the hose until it is fully inserted inside the frame.

7. Once the hose is re-attached to the brake lever, re-install the headtube port.



REPLACING/INSTALLING DROPPER POST HOUSING

The alloy frame has a natural guiding surface built above the bottom bracket which helps the housing transition from the seat tube to the down tube and up towards the head tube port.

1. Remove drive side head tube port cover.



2. If replacing the old housing, cut a new piece to the same length. If you don't have the old piece, approximate the length required and cut a slightly longer portion

3. Gently bend a 2-inch portion of the end of the seat post housing. This will allow the housing to glide up the downtube without catching on edges inside the frame

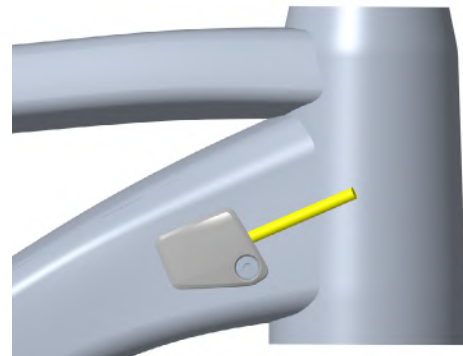
4. Beginning from the seat tube, begin feeding the housing down. Push the housing down, gently twisting back and forth until it makes it way up the down tube. Fish it out with a pick or a bent spoke.



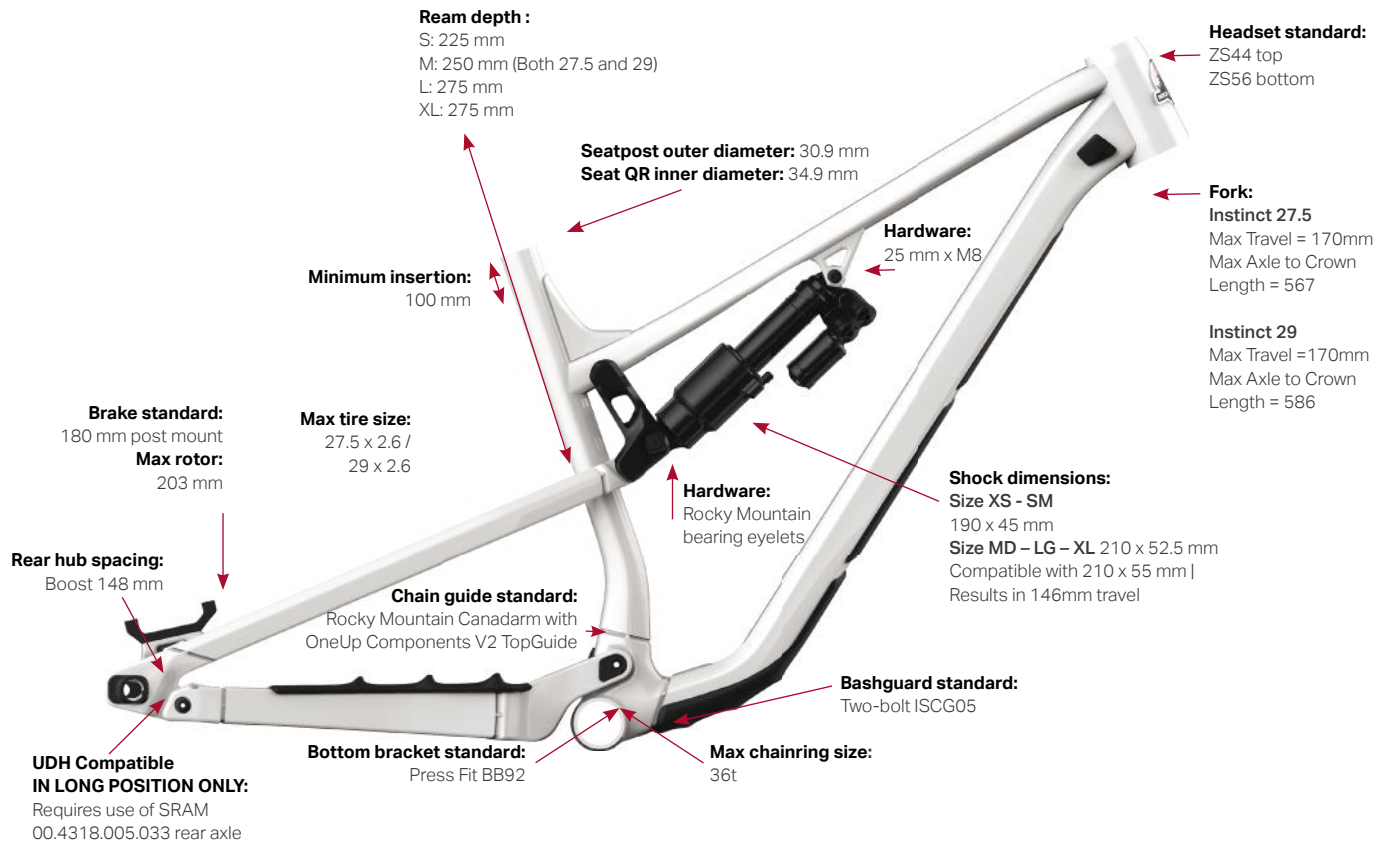
5. Before you re-attach the seatpost housing to the dropper post lever, install the foam sleeve over the housing. You will need to push the foam housing down the hose until it is fully inserted inside the frame.

6. Complete the dropper post installation as per the dropper post manufacturer's instructions.

7. Once the seat post is correctly installed, re-install the headtube port.



CRITICAL DIMENSIONS



Shock fitment

We check clearances for many shocks but cannot guarantee compatibility with all makes and models. Please contact your local dealer if you have a specific question regarding shock fitment.

Please note that you can run a 210mm eye-to-eye shock with a 55mm stroke. The stock 52.5mm stroke provides 140mm of travel whereas the 55mm stroke will give you 146mm of travel

Approved shocks (for 190x45 (size XS-SM) and 210x52.5 (size MD-LG-XL))

Fox	Marzocchi	RockShox	Cane Creek
• FLOAT DPS	• Bomber RC	• Deluxe	• DB Coil
• FLOAT DPX2		• Super Deluxe Air	• DBIL Coil
• FLOAT X2		• Super Deluxe Coil	• DB Air
• DHX2			• DBIL Air

PRO TIPS & TRICKS

- When tuning your suspension, write down your settings so you can refer back to them. Better yet, use an online spreadsheet on your phone!
- Use a 4 mm plastic housing ferrule to plug any unused cable ports at the head tube.
- When removing your rear wheel, you can rest the chain on the driveside seatstay protector to prevent it from dangling awkwardly.
- When replacing shift or post housing, you can use a RockShox reverb tool to simply pull a new piece of housing right into place, without disturbing the inner foam tubes.

- When assembling pivot bolts, use grease to “stick” any spacers into place while you assemble.
- Insert pivots through bearings/spacers so they sit flush with the inside of the inner race, holding washers in place while you assemble.
- Zip-tie a spare derailleur hanger to your saddle rails so you always have one with you when you’re deep in the woods.



EXPLODED VIEW

Click [HERE](#) to visit the Exploded View for the Instinct Carbon and Alloy frameset.

FULL LIST OF PARTS

Click [HERE](#) to visit the complete list of parts including part numbers, descriptions, torque values and assembly instructions

SMALL PARTS KITS

Click [HERE](#) to visit the complete list of parts including part numbers, descriptions, and assembly instructions

WARRANTY INFORMATION

Your bicycle is warrantied against defects in materials and manufacturing as per the following table:

CATEGORY	TERM	NOTES
Frame members	5 years	Front triangle + rear triangle, links
Hardware	1 year	Pivots, axles, etc.
Drive wear items	1 year	Pulleys, pinions, transfer chain
Battery	2 years	If stored for 3+ months, charge battery every 3 months. Failure to do so may cause damage.
Components	As per original manufacturer warranty	

All warranty and after-sale service must be handled by the authorized dealer who sold the complete bicycle or frame. We cover your Rocky Mountain frame for defects in material and workmanship from the original date of purchase of your new Rocky Mountain bicycle according to the frame material and the type of use.

Registering your bike is the official way for us to welcome you into the Rocky Mountain family. It's also an important step in activating your bike's warranty. If you ever have an issue, we'll be able to handle your case efficiently and get you back riding as soon as possible. It's easy and only takes a few minutes.

bikes.com/registration

Frame material / type of use

- Carbon fibre: 5 years – Limited*
- Aluminum – front and fully suspended: 5 years – Limited*
- Downhill and freeride: 3 years – Limited*

* Please refer to the limitations stated below.

NOTE – Warranty is not valid for:

- The installation of components, parts or accessories that are not originally intended for or compatible with the bicycle (or frame) as sold.
- The purchase of a Rocky Mountain bicycle from an unauthorized dealer.

- The purchase of a Rocky Mountain bicycle or frame from third-party internet sites (such as eBay), no matter what the listing says.
- This limited warranty covers bicycles previously used for commercial activity such as rental (bike park), courier, police, security, etc. against defects in material and workmanship. Hardware, bearings, pivots and bushings are excluded from our warranty policy.

Warranty coverage against other defects in workmanship and materials

- Coating – paint and decals: 1 year
- Full suspension frame hardware, bearings, pivots and bushings*: 1 year
*Links are part of the frame.
- Downhill and freeride frame hardware, suspension: 6 months

What is not covered?

- Normal wear and tear
- Damage or failure caused by accident, misuse, abuse or neglect
- Extreme or improper use of your Rocky Mountain bicycle outside of its intended purpose
- Improper assembly and/or lack of proper maintenance
- Paint fading caused by the effects of ultraviolet light (UV) or outdoor exposure
- Scratches and/or chips in the paint caused by dirt, rocks, road debris, roof rack transport, etc
- Components, parts or accessories not compatible with the bicycle (or frame)
- Damage on pressfit bottom bracket caused by improper service or materials/parts

Details of what is not covered under warranty

- Normal wear and tear on tires, tubes, brakes, gear cables, brake pads, etc. is not covered. Your authorized Rocky Mountain dealer will tell you what these normal maintenance items are.
- Consequential damage or any damage caused by accident, misuse or abuse.
- Improper assembly and/or lack of proper maintenance, sandblasting, sanding, grinding, wire brushing, filing, welding, brazing, drilled holes, anodizing, repainting and chrome plating are not covered under your warranty and may void the warranty of the component manufacturers.

- If you ride in extreme terrain, as depicted in mountain biking videos (e.g., by taking "trial"-style riding courses, riding ramps, performing stunts, riding on BMX tracks, riding in the city down stairs and embankments or riding in other similar terrain), you put yourself at great personal risk and forfeit the warranty as outlined in the Warranty Table. It is important to note that bent components, frames, forks, handlebars, seat posts, pedals, cranks and wheel rims are signs of accidents and/or abuse.
- Labour for part replacement or changeover is not included.
- Rocky Mountain Bicycles reserves the right to repair or replace at its discretion any part that is deemed to be covered by a valid warranty.
- Please note that Rocky Mountain Bicycles cannot guarantee a colour match to the original part.
- This warranty extends from the date of purchase, applies only to the original owner, and is not transferable.

EXCLUSION AND LIMITATION OF DAMAGES

THE WARRANTY OF ROCKY MOUNTAIN BICYCLES IS LIMITED TO THE REPAIR OR REPLACEMENT OF THE PRODUCTS AND DOES NOT GRANT ANY WARRANTY, EITHER EXPRESSED OR IMPLIED, LEGAL OR CONVENTIONAL, AND DISCLAIMS ANY AND ALL IMPLIED WARRANTIES OF MERCHANTABILITY AND FITNESS FOR PARTICULAR PURPOSES, AND ROCKY MOUNTAIN SHALL UNDER NO CIRCUMSTANCES BE LIABLE FOR DIRECT OR INDIRECT, SPECIAL, INCIDENTAL OR CONSEQUENTIAL DAMAGES, EVEN WHERE ROCKY MOUNTAIN HAS BEEN ADVISED OF SUCH DAMAGES, AND ROCKY MOUNTAIN'S LIABILITY SHALL BE LIMITED TO \$50.00.