

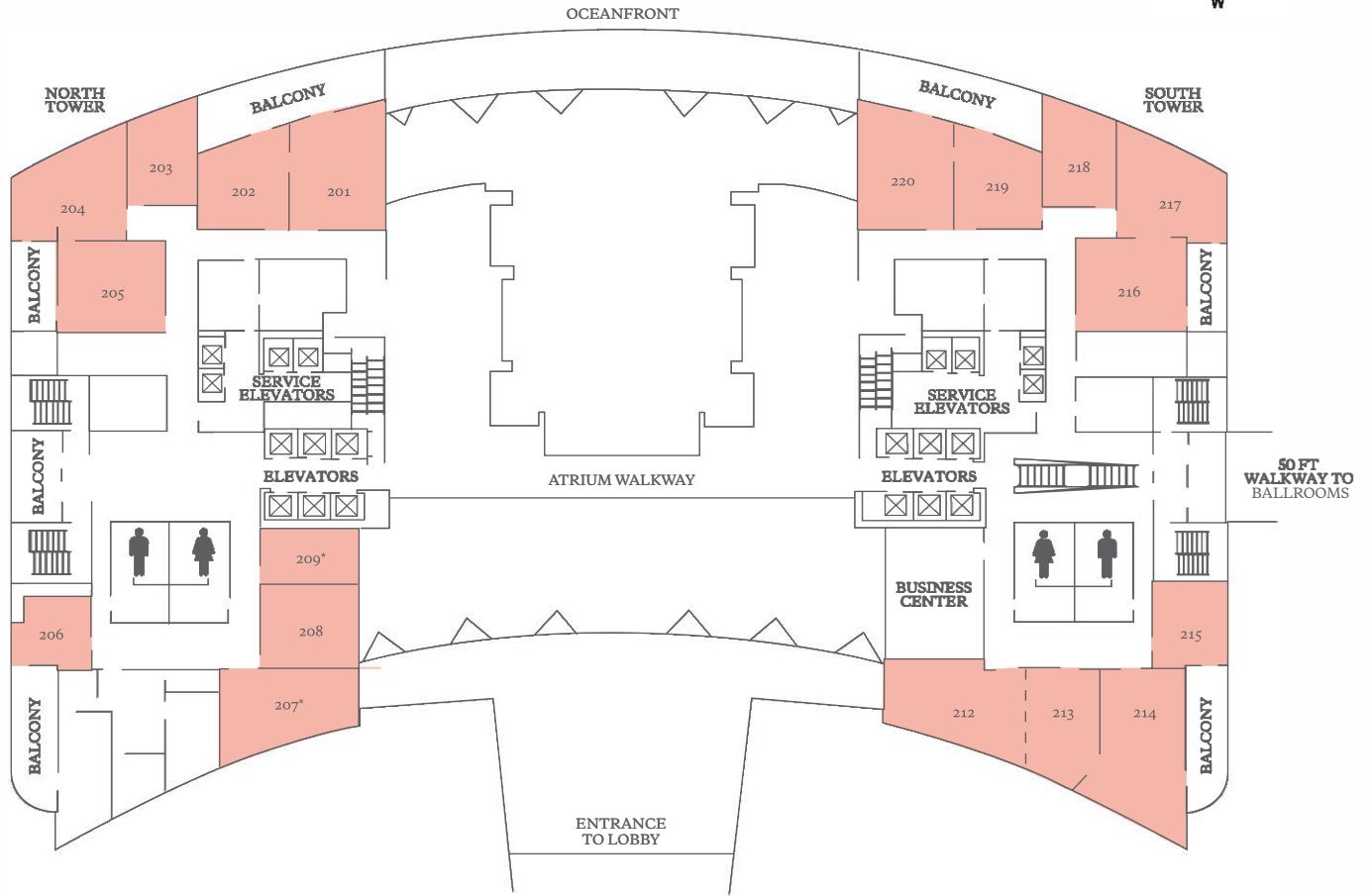
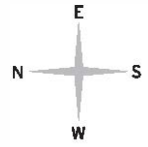
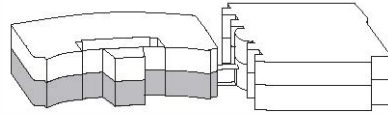
The **DIPLOMAT**
BEACH RESORT

**FLOOR PLANS &
CAPACITY CHARTS**



3555 SOUTH OCEAN DRIVE HOLLYWOOD, FL 33019
954-602-6000
DIPLOMATRESORT.COM

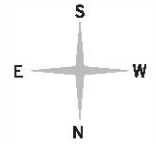
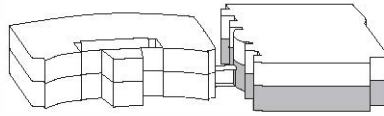
MEETING SPACE SECOND FLOOR



ROOM	SQ. FEET	DIMENSIONS	CLASSROOM	BANQUET (10 PER)	THEATER	CONFERENCE	RECEPTION	U-SHAPE
BREAKOUT MEETING SPACE, 2ND FLOOR								
201	845	27' X 31'	40	40	55	25	80	25
202	561	22' X 25'	24	30	40	18	60	20
203	480	22' X 22'	18	20	30	12	50	10
204	745	31' X 24'	40	40	50	24	80	25
205	712	27' X 27'	40	50	50	22	70	24
206	371	19' X 19'	12	12	20	10	40	8
207*	735	34' X 22'	*	-	-	14	-	-
208	562	28' X 20'	32	30	40	16	60	20
209*	388	24' X 16'	*	-	-	12	-	-
212	840	40' X 21'	36	50	60	25	70	25
213	615	22' X 29'	30	30	40	14	60	18
212 & 213	1,454	61' X 24'	70	90	110	40	150	30
214	1,022	24' X 44'	50	70	90	25	105	30
215	424	19' X 22'	18	12	20	10	40	8
216	712	27' X 27'	24	40	50	20	75	25
217	765	33' X 23'	40	40	55	24	80	25
218	428	18' X 24'	20	20	30	12	45	10
219	597	24' X 25'	26	30	50	20	60	15
220	845	27' X 31'	40	40	60	25	90	20

*PERMANENT CONFERENCE TABLE WITH EXECUTIVE CHAIRS. SPECIAL NOTE: MOST MEETING ROOMS ARE NOT SQUARE, BUT UNIQUE IN SIZE AND SHAPE.

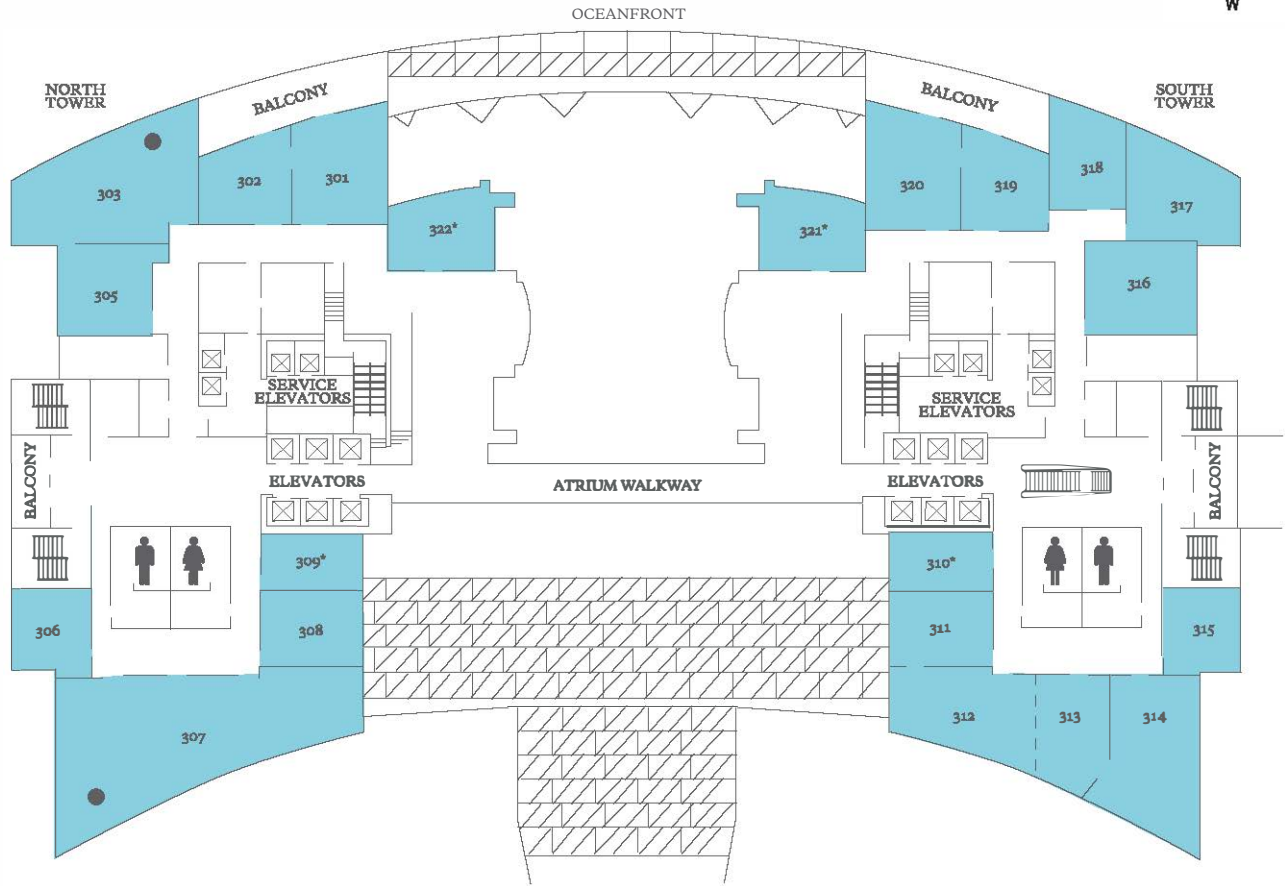
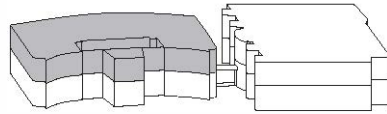
CONVENTION CENTER SECOND FLOOR



ROOM	SQUARE FT.	DIMENSIONS	CEILING HT.	CLASSROOM	BANQUET (10 PER)	THEATER	HOLLOW SQ.	RECEPTION	U-SHAPE
GRAND BALLROOM LEVEL									
DIPLOMAT BALLROOMS 1, 2, 3, 4, & 5	10,715	75' X 132'	23'	500	500	850	-	1,100	-
DIPLOMAT BALLROOMS 1, 2, & 3 OR 3, 4, & 5	7,177	75' X 96'	23'	350	350	775	-	750	-
DIPLOMAT BALLROOM 3	3,639	75' X 48'	23'	175	240	370	72	370	60
DIPLOMAT BALLROOMS 1 & 2 OR 4 & 5	3,538	75' X 48'	23'	175	200	370	70	375	60
DIPLOMAT BALLROOM 1 OR 2, 4 OR 5	1,769	37' X 48'	23'	70	100	175	46	175	40
REGENCY BALLROOMS 1, 2, & 3	11,006	71' X 152'	23'	560	600	1,050	-	1,050	-
REGENCY BALLROOMS 1 & 2	7,788	71' X 107'	23'	420	450	750	-	800	-
REGENCY BALLROOMS 2 & 3	7,645	71' X 106'	23'	420	450	750	-	800	-
REGENCY BALLROOM 1	3,361	71' X 46'	23'	150	180	370	62	350	70
REGENCY BALLROOM 2	4,427	71' X 61'	23'	240	250	475	74	475	80
REGENCY BALLROOM 3	3,218	71' X 45'	23'	180	200	350	62	335	70
ATLANTIC BALLROOMS 1, 2, & 3	9,030	72' X 125'	23'	450	500	900	-	930	-
ATLANTIC BALLROOMS 1 & 2	5,817	72' X 80'	23'	280	350	530	-	550	-
ATLANTIC BALLROOMS 2 & 3	6,187	72' X 85'	23'	280	350	550	-	575	-
ATLANTIC BALLROOM 1	2,843	72' X 40'	23'	132	170	285	60	285	60
ATLANTIC BALLROOM 2	2,974	72' X 40'	23'	132	170	285	60	285	60
ATLANTIC BALLROOM 3	3,213	72' X 45'	23'	175	200	300	62	300	60
GRAND BALLROOMS EAST & WEST	20,004	130' X 151'	23'	1,040	1,300	1,750	-	1,750	-
GRAND BALLROOMS EAST OR WEST	10,002	65' X 151'	23'	480	650	900	-	900	-
PRE-ASSEMBLY	20,000	IRREGULAR	23'	-	-	-	-	2,105	-

2ND FLOOR BALLROOM EXHIBIT BOOTH CAPACITIES AVAILABLE UPON REQUEST.

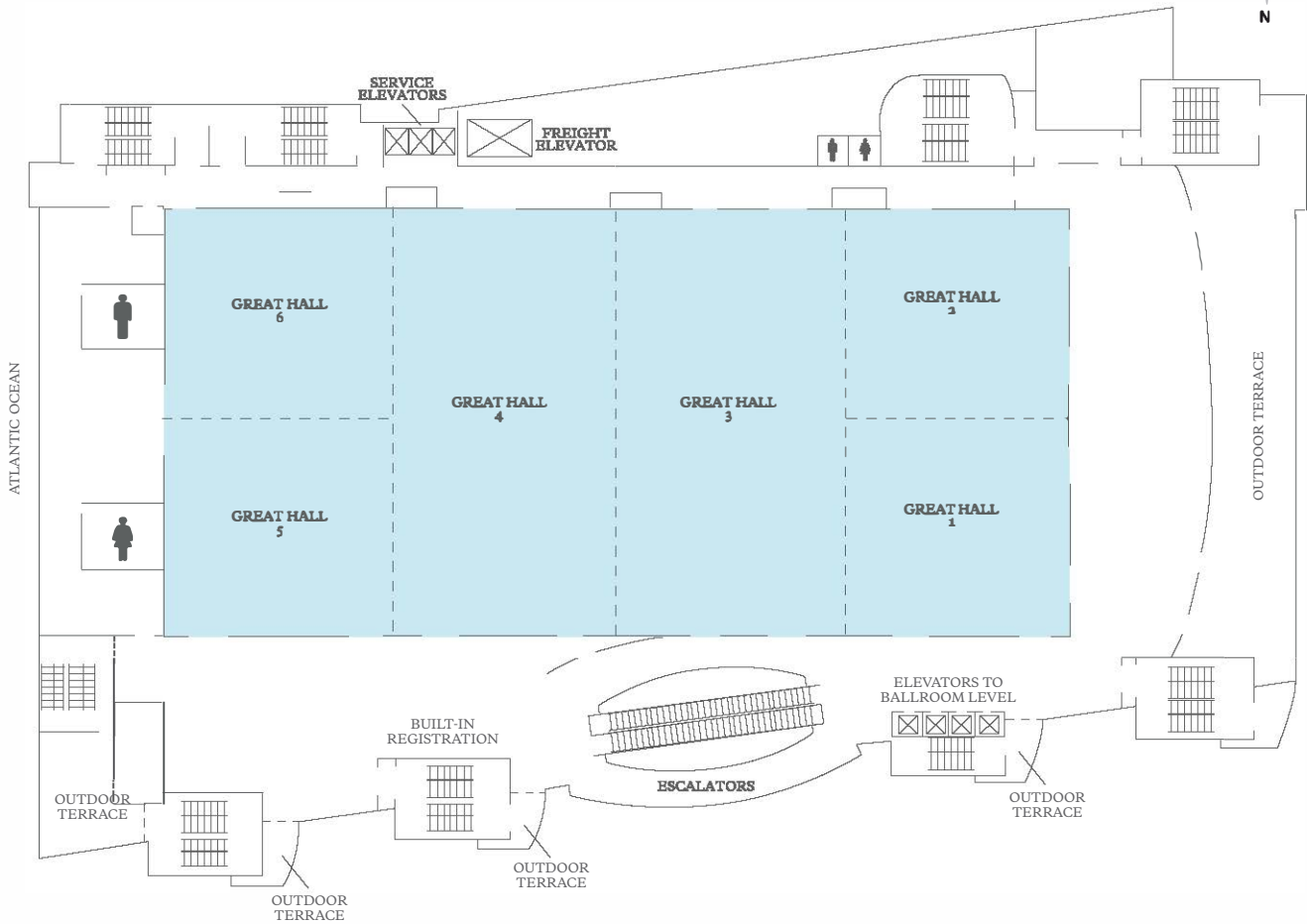
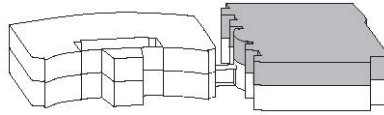
MEETING SPACE THIRD FLOOR



ROOM	SO. FEET	DIMENSIONS	CLASSROOM	BANQUET (10 PER)	THEATER	CONFERENCE	RECEPTION	U-SHAPE
BREAKOUT MEETING SPACE, 3RD FLOOR								
301	800	25' X 32'	35	40	55	20	80	5
302	556	22' X 26'	24	30	40	18	60	15
303	1,400	51' X 28'	70	90	130	30	140	30
305	691	26' X 26'	40	50	60	22	70	24
322*	525	26' X 20'	*	-	-	12	-	-
306	387	20' X 20'	12	12	20	10	40	8
307	2,440	79' X 31'	100	150	200	40	225	46
308	562	27' X 21'	32	30	40	16	60	20
309	324	20' X 16'	*	-	-	10	-	-
310*	324	20' X 16'	*	-	-	10	-	-
311	562	27' X 21'	32	30	40	16	60	15
312	845	41' X 21'	36	50	60	25	70	15
313	618	22' X 29'	30	30	40	14	60	15
312 & 313	1,463	61' X 24'	70	90	110	40	150	30
314	1,007	24' X 43'	50	70	90	25	105	30
315	439	19' X 23'	18	12	20	10	40	8
316	712	27' X 26'	24	40	50	20	75	25
317	735	31' X 24'	40	40	45	24	80	25
318	428	18' X 24'	20	20	30	12	45	10
319	568	22' X 26'	30	30	40	16	60	15
320	800	25' X 32'	35	40	50	20	80	20
321* EXECUTIVE BOARDROOM	525	26' X 20'	*	-	60	12	-	-
322* EXECUTIVE BOARDROOM	525	26' X 20'	*	-	-	12	-	-

*PERMANENT CONFERENCE TABLE WITH EXECUTIVE CHAIRS. SPECIAL NOTE: MOST MEETING ROOMS ARE NOT SQUARE BUT UNIQUE IN SIZE AND SHAPE.

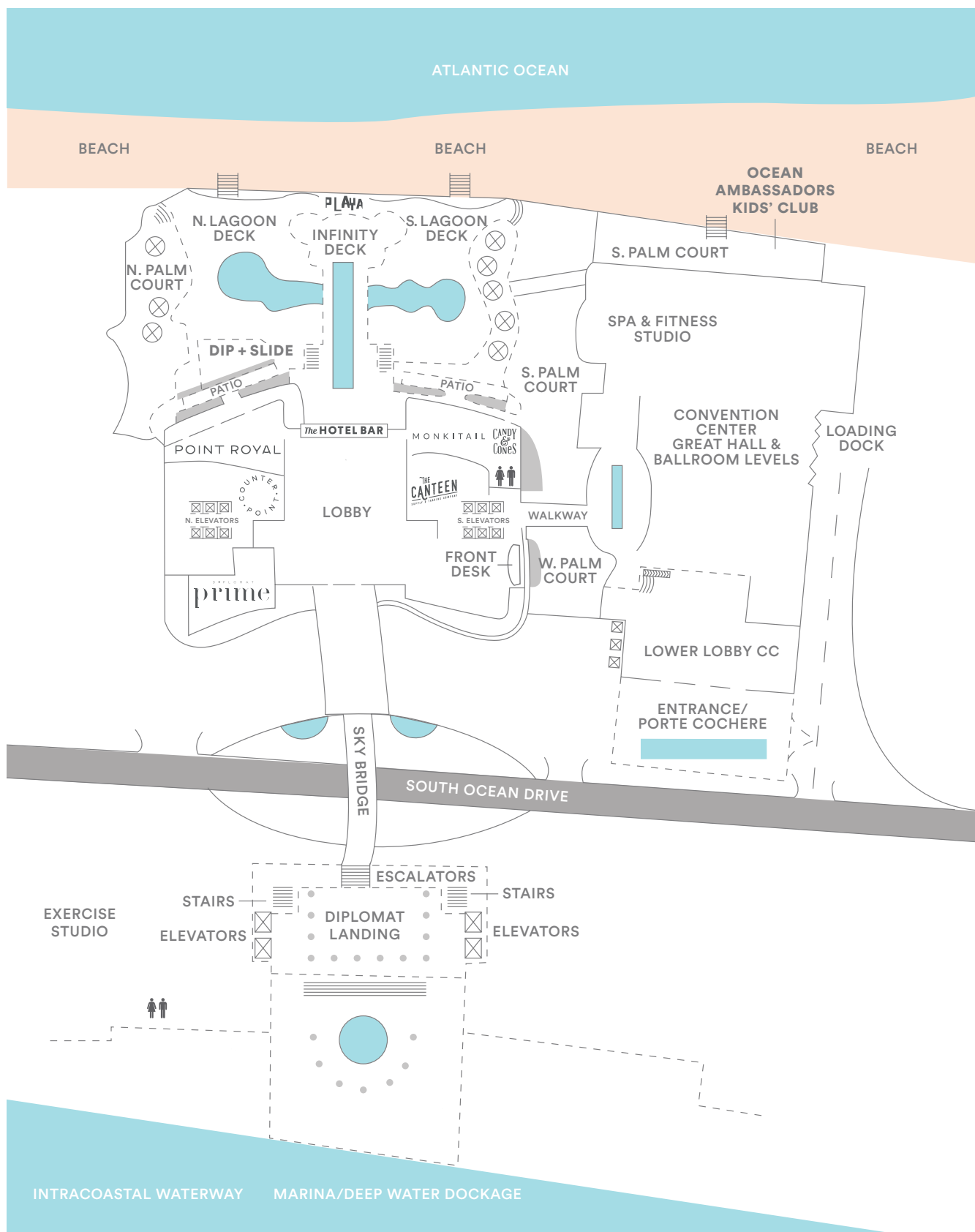
CONVENTION CENTER THIRD FLOOR



ROOM	SQUARE FT.	DIMENSIONS	CEILING HT.	CLASSROOM*	BANQUET	THEATER	RECEPTION	EXHIBIT BX 10
GREAT HALL LEVEL								
GREAT HALLS 1, 2, 3, 4, 5, & 6	50,100	147' X 336'	29'	2,800	2,800	5,000	5,000	312
GREAT HALLS 1, 2, 3, & 4 OR 3, 4, 5, & 6	37,436	147' X 251'	29'	2,100	2,160	3,600	4,050	230
GREAT HALLS 1, 2, & 3 OR 4, 5, & 6	25,050	147' X 167'	29'	1,400	1,440	2,400	2,700	150
GREAT HALLS 1 & 2 OR 5 & 6	12,664	147' X 85'	29'	700	720	1,200	1,350	70
GREAT HALL 3 & 4	24,772	294' X 164'	29'	1,400	1,440	2,400	2,700	150
GREAT HALL 3 OR 4	12,386	147' X 84'	29'	700	720	1,200	1,350	70
GREAT HALLS 1, 2, 5, OR 6	6,332	85' X 75'	29'	430	360	650	700	35
HALLS PRE-ASSEMBLY	17,000	IRREGULAR	29'	-	-	-	1,789	-
GREAT HALLS 1, 2, & FOYER	5,115	-	-	-	-	-	650	-
GREAT HALLS 1, 2, & FOYER TERRACE	5,310	-	-	-	-	-	500	-
GREAT HALLS 5, 6, & FOYER	3,450	-	-	-	-	-	600	-

*CLASSROOM SET UP WITH STANDARD FRONT PROJECTION RISER AND SCREEN.

OUTDOOR PLANS LOBBY LEVEL



Ample outdoor function space available poolside, on the Intracoastal Waterway and beachfront, will accommodate groups of 10 to well over 1000 guests. Specifics should be reviewed with a Catering and/or Convention Services representative to determine food & beverage service/station needs, along with entertainment staging and lighting set-ups. Please contact 954.602.8600 for more information.