

**2027**  
**PROSPECTUS**  
Mātārere



# STUDY WITH US

## Tahuri mai ki te ako

# Te Rito Maioha

Te Rito Maioha was formed in 1963 as the New Zealand Association of Childcare Centres by women's rights activist, peace campaigner and politician Sonja Davies.

Sonja Davies believed all children | tamariki should have quality education and care with qualified teachers | kaiako in services supported by Government. [Read more here](#)

## OUR PURPOSE TŌ TĀTOU KAUPAPA

To inspire, empower and educate teachers and learners, embracing cultures and languages to ensure every child's potential is ignited.

Kia whakahihiko, kia whakamana, kia hoatu rā te mātauranga me te āheinga ki ngā kaiako me ngā tauira e pōwhiritia ana ngā ahurea, ngā reo rangatira o te ao, kia tutūngia e rātou te pito mata kei ia tamaiti.

## OUR COMMITMENT TE PAE TATA

We are a bicultural organisation committed to advocacy, teaching, research, promotion, and delivery of world class teacher education for tamariki, whānau, kaiako, ECE services and schools. We respond by being connected, contributing and agile to ensure successful learning happens together.

He rōpū tikanga-a-rua ā Te Rito Maioha, ko tā mātou e manawanui nei, he whakaako, he rangahau, he whakatuara, kia tautoko ngā tamariki, ngā whānau, ngā kaiako, me ngā whare kōhungahunga katoa. Kia pai ai tā mātou mahi, ka mau kaha nei ki ngā tūhononga, kia kakama tātou ki te ako ngātahi, kia pūmau ki te angitu.



## OUR GUIDING BELIEFS NGĀ WHAKAPONO ĀRAHITANGA

Every child | tamaiti has the right to high-quality education that complements and supports their and their family | whānau and community life.

Every child | tamaiti in Aotearoa New Zealand has the right to know and enjoy the dual cultural heritage of Te Tiriti o Waitangi partners along with their own cultural heritage.

People working in early childhood and primary education have access to high-quality teacher | kaiako education, advice, information, resources, to aide their decision-making that affects their profession, children | tamariki and families | whānau.

That teacher education is focused on cultivating reflective practitioners. Teachers should be well-versed in content knowledge and pedagogical strategies and continuously reflect on their experiences, adapt their practices, and engage in lifelong learning.

Our education programmes empower kaiako and educators to meet the diverse needs of their children | tamariki and contribute positively to their communities.

## OUR VALUES NGĀ UARA

**Making a difference** – Te puawaitanga o te tangata

**Honouring Te Tiriti o Waitangi** – E matua whakapono ana tātou ki te Tiriti

**Including everyone** – Whakawhanaungatanga

**Being accountable** – Kia tāea te hāpai i ngā kaupapa katoa ahakoa te aha

**Caring and connecting** – Manaakitanga

**Innovating** – Whakahihiko hinengaro

*Illustration: Ngā Karekare Oranga - The Waves of Wellbeing  
The current/ripples from the spring (Puna) carrying energy, support and wellbeing (Ora).*

Why Te Rito Maioha? Kōwhirihia a Te Rito Maioha?	4
Flexible study Te ako ngāwari	5
Scholarships He Karahipi	6
Te Rito Maioha, te piki kotuku	9
Programmes overview Hōtaka whānui	10
Programme pathways Te huarahi hōtaka	11
How to apply Te tonu	12
<b>Undergraduate programmes – Tohu paetahi</b>	<b>15</b>
New Zealand Diploma in Early Childhood Education (Aperfield Montessori) Tohu Pōkairua Mātauranga Kōhungahunga (Aperfield Montessori)	16
New Zealand Diploma in Early Childhood Education (Pasifika) Tohu Pōkairua Mātauranga Kōhungahunga (Pasifika)	18
New Zealand Diploma in Early Childhood Education (Home-based Care) Tohu Pōkairua Mātauranga Kōhungahunga (Noho Kāinga)	20
New Zealand Diploma in Early Childhood Education and Care Te Tohu Pōkairua Mātauranga Kōhungahunga	22
Bachelor of Education Tohu Paetahi Mātauranga	24
Bachelor of Teaching (ECE) Tohu Paetahi Whakaakoranga (ECE)	26
Bachelor of Teaching (Primary) Tohu Paetahi Whakaakoranga (Kura Tuatahi)	28
<b>Graduate programmes – Tohu pōkairua paetahi</b>	<b>31</b>
Graduate Diploma of Teaching (Primary) Pōkairua Paetahi (Kura tuatahi)	32
Graduate Diploma of Teaching (ECE) Te Poutama ki te Pakaritanga (ECE)	34
<b>Postgraduate programmes – Tohu pōkairua tautara</b>	<b>37</b>
Postgraduate Diploma in Infant and Toddler Learning and Development Pōkairua Tautara i te Akoranga Kōhungahunga me te Whanaketanga	38
Postgraduate Diploma in Leadership (ECE) Te Titohu i te Ārahitanga (ECE)	40
Master of Education (ECE) Tohu Paerua Kōhungahunga	42
Master of Education (Primary Education) Tohu Paerua Kura Tuatahi	44
<b>Other programmes – Ngā hōtaka atu</b>	<b>46</b>
ECE Diploma to Degree Upgrade Pathway Titohu Whakamohoa	47
Micro-credentials Tohu pae whāiti	48

## Why Te Rito Maioha? Kōwhirihiā a Te Rito Maioha?

We have over 60 years of experience, growing skilled teachers | kaiako, leaders, educators, and experts across the motu. Our diploma, degree, and postgraduate programmes in early childhood and primary education will grow your kete of knowledge.

### Recognised

We are proud to be one of Aotearoa New Zealand's top tertiary education providers means that you can have absolute confidence in all our programmes.

### Bicultural

We are a leader in bicultural teaching and learning, our lecturers and pouako are passionate and committed to helping you build your skills and understanding of te reo me ngā tikanga Māori.

### Location

At our 11 regional education centres we bring education and support to you, so that you can realise your true potential and be successful in your course of study.

### Flexible

Our programmes are a flexible blend of online, face-to-face and field-based experiences.

### Authentic

We provide you with practical experiences in early childhood education and care centres and schools, so that you feel confident and ready to teach when you graduate.

### Support

We deliver outstanding pastoral care to support your experiences, achievements and results.

**E kore e taea e te whenu kotahi ki te raranga i te whāriki  
kia mōhio tātou ki ā tātou. Mā te mahi tahi o ngā whenu  
mā te mahi tahi o ngā kairaranga ka oti tēnei whāriki.**

– Tuteira Pohatu

## Study and gain qualifications with us while working in your own community with a blended delivery of:

### Online Learning

Online learning offers you the flexibility to study and work at the same time from anywhere in Aotearoa New Zealand.

You will belong to an online community of learners, where you will learn alongside your peers, lecturers and pouako and gain access to latest research and literature to inform your learning.

### Face-to-face Learning

Some parts of your programmes are delivered face-to-face such as your orientation days, noho marae, or block courses.

### Noho Marae

Noho marae is a powerful part of your bicultural learning and teaching journey.

You will experience being in a marae alongside other students | taura, lecturers and pouako, where you will learn about tikanga and kawa – protocol and practices – and their meanings.

### Field-based Learning

Field-based learning means that you will be required to work or volunteer two days a week in an ECE centre, home-based service or a school. This will be your home centre or school.

This applies when studying towards a level 5 Diploma or teaching qualification.

### Practicum

If you are studying a Bachelor of Teaching or Graduate Diploma of Teaching, you will also spend time in other early childhood education and care centres or schools, outside of your home centre or school. There you will gain professional experience, mentoring from associate teachers and visits from lecturers and pouako.

Your practicum experience will prepare you to teach as soon as you gain your qualification, and to continue your progress towards achieving full registration.

### Offshore Learning

Overseas countries within the Pan Pacific region can study some of our online-only programmes and access support from our lecturers and pouako in Aotearoa New Zealand.

The tapestry of understanding cannot be woven by one strand alone. Only by the working together of strands and the working together of weavers will such a tapestry be completed.

– Tuteira Pohatu

# Scholarships He Karahipi



Discover our diverse range of scholarship opportunities, designed to help you finance your studies and embark on your academic journey with confidence.

## International Study Grant

Contributes \$6,500 toward the full year of tuition for applicants enrolled in the **Graduate Diploma of Teaching (ECE or Primary)**.

## Tauira Support Grant

Offers \$500 in support toward a learning assessment\* for tauira experiencing learning challenges related to an impairment.

*\*without a prior formal assessment.*

## Tagata o le Moana Scholarship

Designed to support Pasifika teachers, this scholarship covers tuition fees for the full duration of the **Bachelor of Teaching (ECE or Primary)** or **Graduate Diploma of Teaching (ECE or Primary)**.

## Manukura Scholarship

Covers full tuition fees for Māori teachers enrolled in the **Bachelor of Teaching (ECE or Primary)** or **Graduate Diploma of Teaching (ECE or Primary)**, helping to reduce socio-economic barriers.

## Postgraduate Infant and Toddler Scholarship

Covers full tuition fees for the full duration of the **Postgraduate Diploma in Infant and Toddler Learning and Development**, supporting educators specialising in the earliest years of learning.

## Kahurangi Scholarship

Alleviates financial barriers and supports future educators enrolled in the **Bachelor of Teaching (ECE or Primary)** or **Graduate Diploma of Teaching (ECE or Primary)** by covering the full tuition fees for eligible applicants.

## Men in ECE

Supporting men entering early childhood education, this scholarship funds the full tuition fees for either the **Bachelor of Teaching (ECE)** or **Graduate Diploma of Teaching (ECE)**.

## Master of Education Scholarship

Covering full tuition fees for the **Master of Education (ECE)**, this opportunity empowers talented applicants to pursue postgraduate study by removing the socio-economic barriers that might otherwise hold them back.

## GWWCT Final Practicum Scholarship

Offering **\$1,000** scholarships to support taurira completing their final practicum in the **Bachelor of Teaching (ECE or Primary)** or **Graduate Diploma of Teaching (ECE or Primary)**, helping ease financial pressure at a pivotal stage in their studies.

## Aperfield Montessori Trust Scholarship

Designed by the Aperfield Montessori Trust, this scholarship supports students enrolled in the **New Zealand Diploma of ECE (Aperfield Montessori)**. It provides up to **\$3,240** in fee reimbursement upon completion, plus a 50% travel reimbursement—up to **\$1,000**—for attending workshops.

## Oceania Scholarship

Aimed at building cultural confidence and connection, this scholarship supports early childhood teachers enrolled in the **New Zealand Diploma in Early Childhood Education (Pasifika)** by covering tuition fees.

## Judy Kaa Scholarship

Awarded annually to a student admitted to the **Postgraduate Diploma in Leadership (ECE)**, providing funding for the tuition fees of two postgraduate courses.

Set yourself up for success with our Scholarships, Grants, and Loans.



# Johanna's Leadership Journey

## “I just wanted to understand how he was learning”

Johanna McIntosh Postgraduate Diploma in Leadership (ECE)  
Judy Kaa Scholarship Recipient



Johanna McIntosh pictured right, with Dr Bridgette Redder (Programme Leader for the Postgraduate Diploma in Leadership, and Postgraduate Diploma in Infant & Toddler Education) pictured left.

Johanna McIntosh didn't begin her journey into teaching with a grand plan to become a leader. It started much closer to home, with her son. “I could see his brain clicking over,” she recalls. “I just wanted to understand why he was doing what he was doing, and how I could support his learning.”

At the time, Johanna was already working in an early childhood centre. Becoming a parent further ignited that curiosity and that led to study completing her Graduate Diploma in Teaching while balancing full-time work and motherhood.

That balance became even more important as life grew busier. With a mortgage, a young whānau, and professional responsibilities, the idea of returning to full-time, on-campus study simply wasn't realistic. Studying online through Te Rito Maioha offered a pathway that worked around her life, not against it.

“I could still work full-time, still do mum life,” she says. “When my son went to bed, that's when I studied.”

That flexibility made it possible for Johanna to continue her journey into the Postgraduate Diploma in Leadership (ECE), a step she says she may not have taken without the support of a scholarship.

Receiving the Judy Kaa Scholarship was a turning point. “It covered most of my fees,” she explains. “Without it, I probably wouldn't have done the course.”

But while financial support opened the door, it was Johanna's lived experience and the challenges she faced along the way that shaped her journey through it.

During her return to study, Johanna experienced the loss of her mother. Continuing would have been difficult under any circumstances, but she credits the support of her lecturers and the close-knit learning environment for helping her stay the course.

“They made it easier to ask for help,” she says. “They checked in, remembered what I needed... without that, I probably wouldn't have finished.”

That sense of connection mattered. In Te Rito Maioha, Johanna wasn't just another student; she was known, supported, and encouraged to succeed.

Through the qualification, Johanna's leadership began to take clearer shape. Already grounded in te reo Māori and tikanga through her work at Te Puna Reo o Te Kōhao, the programme gave her the tools to better understand and articulate her approach.

Rather than adopting external models of leadership, Johanna deepened her confidence in leading through kaupapa Māori values, seeing leadership as collective, relational, and grounded in service. Concepts such as mauri became central to how she makes decisions, reflecting not just on outcomes, but on the wellbeing of people and spaces around her.

Back in her centre, Te Puna Reo o Te Kōhao in Hamilton, that growth is evident in how she works with others. Johanna has shifted toward a more relational leadership style, coaching and mentoring kaiako, building trust, and creating space for shared learning. She supports her team to strengthen their use of te reo Māori and engage more deeply in reflective practice, lifting the quality of learning for tamariki.

Her leadership is also more assured. Whether navigating challenges within her team or making complex decisions, she now does so with greater clarity and empathy grounded in both her learning and her identity.

Importantly, Johanna's journey has reinforced something she already sensed: she doesn't need to change who she is to be an effective leader. Instead, her strength lies in embracing it.

From a mother wanting to better understand her child, to a Kaiako Matua shaping the experiences of tamariki, whānau, and kaiako in her community, Johanna's journey is one of growth, resilience, and purpose.

And it's a reminder that leadership doesn't start with a title. Sometimes, it starts with a question.

# Te Rito Maioha, te piki kotuku

We are leaders in early childhood and primary education - growing teachers | kaiako, leaders, knowledge and bicultural practice so every child | tamaiti learns and thrives.

As a tertiary education provider, we grow valued teachers, educators, leaders and experts with diploma, degree and postgraduate qualifications in early childhood and primary education.

**Te rito akoranga**  
Growing teachers,  
leaders and experts

Our research, new knowledge and fresh thinking shape our education programmes and professional development, and advance best practice nationally and internationally.



**Tō tātou kaupapa**  
To inspire, empower  
and educate teachers  
and learners, embracing  
cultures and languages  
to ensure every child's  
potential is ignited

**Te taura here  
tangata**  
Growing our  
sector

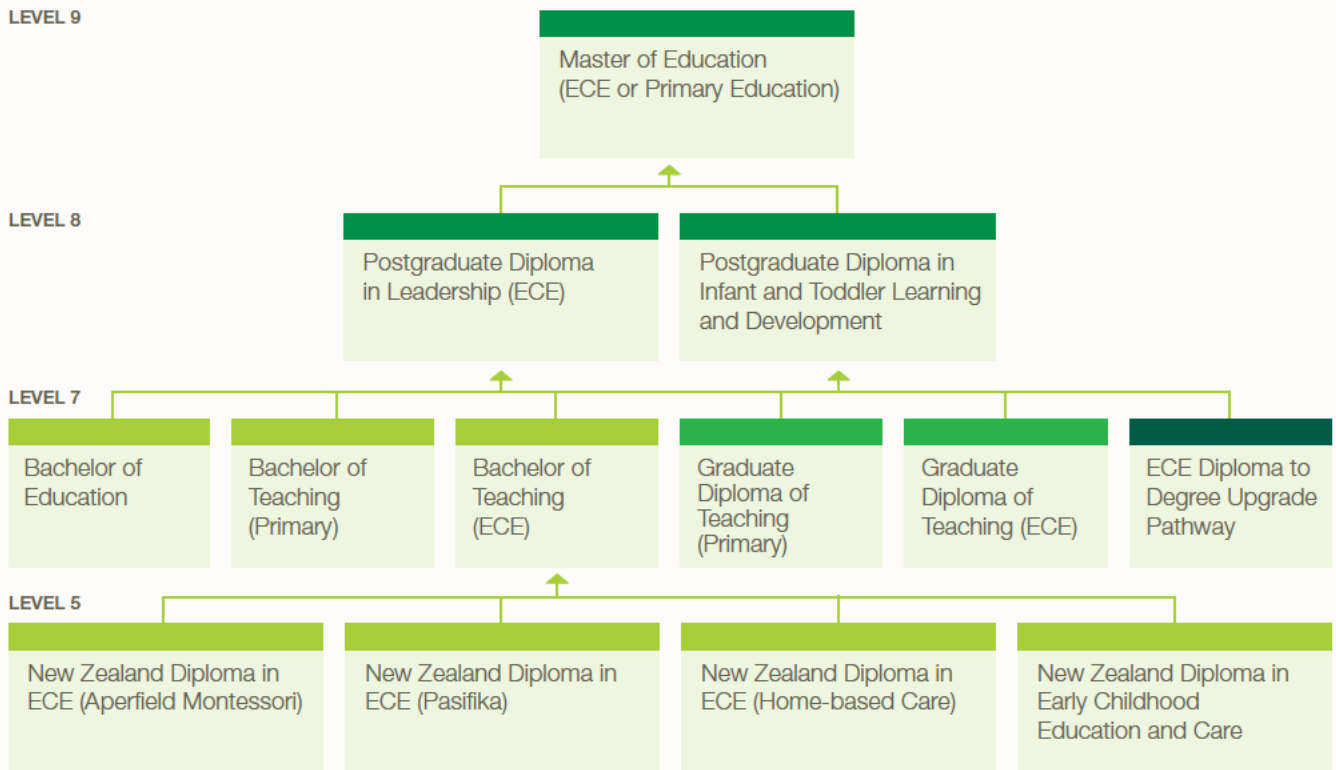
**Te kupenga  
maturanga**  
Growing knowledge  
and practice

As a membership organisation, we are a strong voice for young tamariki and quality early childhood education. We advocate for our sector and connect our members with the latest issues, policy and professional development.

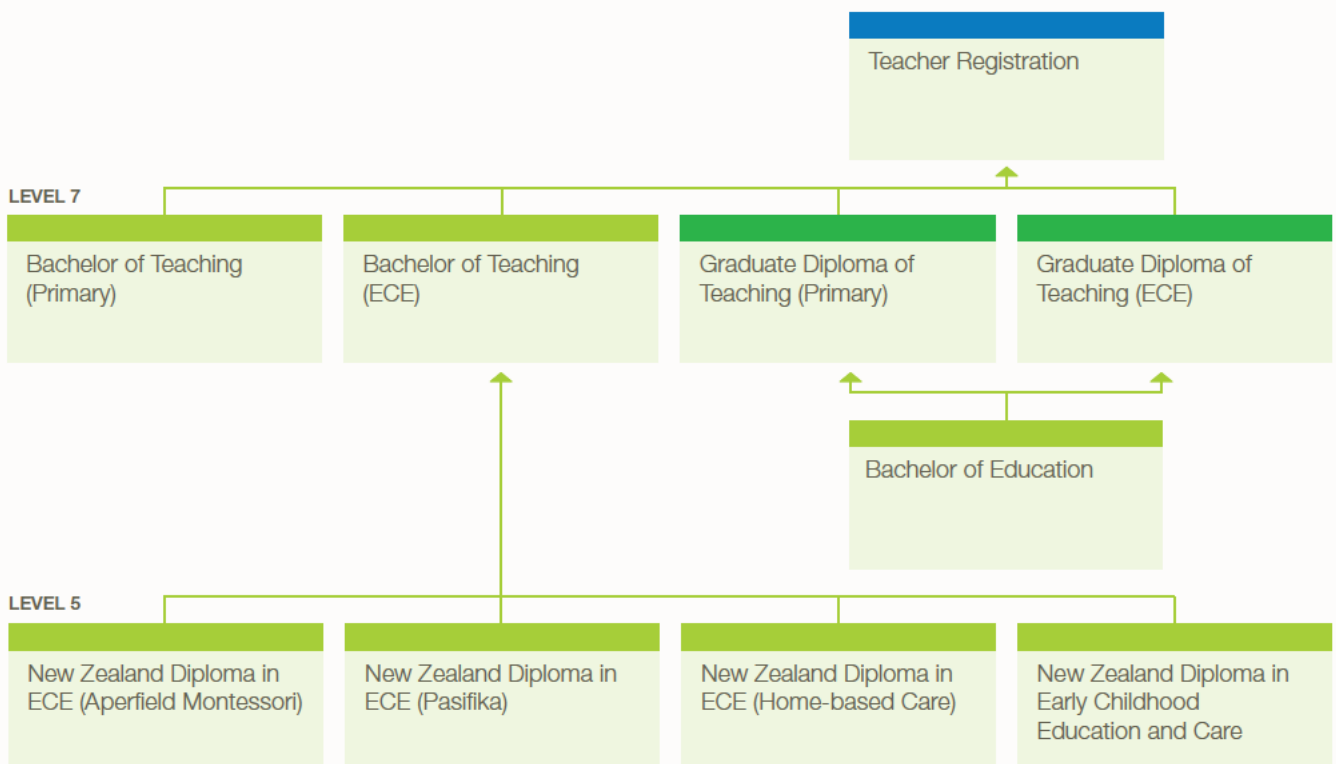
# Programmes overview Hōtaka whānui

PROGRAMME	LEVEL	CREDITS	FULL-TIME PROGRAMME DURATION	INTAKES PER YEAR
<b>Undergraduate programmes</b>				
New Zealand Diploma in Early Childhood Education (Aperfield Montessori)	5	120	1 year	2
New Zealand Diploma in Early Childhood Education (Pasifika)	5	120	1 year	2
New Zealand Diploma in Early Childhood Education (Home-based Care)	5	120	1 year	2
New Zealand Diploma in Early Childhood Education and Care	5	120	1 year	2
Bachelor of Education	7	360	3 years	2
Bachelor of Teaching (ECE)	7	360	3 years	2
Bachelor of Teaching (Primary)	7	360	3 years	1
<b>Graduate programmes</b>				
Graduate Diploma of Teaching (Primary)	7	150	1 year	2
Graduate Diploma of Teaching (ECE)	7	150	1 year	2
<b>Postgraduate programmes</b>				
Postgraduate Diploma in Infant and Toddler Learning and Development	8	120	1 year	2
Postgraduate Diploma in Leadership (ECE)	8	120	1 year	2
Master of Education (ECE)	9	120–180	1–3 years	2
Master of Education (Primary Education)	9	120–180	1–3 years	2
<b>Other programmes</b>				
ECE Diploma to Degree Upgrade Pathway	7	60–90	1–2 years	1

# Programme pathways\* Te huarahi hōtaka



## Teacher registration pathway



\*Completion of a programme does not guarantee admission into another qualification.

# How to apply Te tono

It's easy to apply online for the programme you choose.  
Remember to give yourself plenty of time to complete the steps before the closing date.



## 1. To apply online:

- Find the programme you want to study
- Click apply now
- Complete the application form and upload required documents



## 2. Send further supporting documents:

- You will receive an email requesting any further supporting documents that may be required and your next steps



## 3. Accepting your study offer:

- You will receive an email with an acceptance form
- Sign the document and return it to us
- Arrange to pay your tuition fees

## 4. Ka rawe! Your learning journey is about to begin.

### Tips

- We will contact you by email so make sure your email address is up to date.
- Check your email frequently, even if you're on holiday.
- Send all supporting documents before the closing date on our website.
- You can email your supporting documents to [akomai@ecnz.ac.nz](mailto:akomai@ecnz.ac.nz) or upload them to your online application form, or drop in to your Regional Education Centre.
- If you need help or advice, contact Student Services on 0800 244 532 or [akomai@ecnz.ac.nz](mailto:akomai@ecnz.ac.nz)
- International students need to hold a relevant visa. For more information contact us at [intl@ecnz.ac.nz](mailto:intl@ecnz.ac.nz)

## Interview

If you are applying to study a Bachelor of Teaching, Graduate Diploma of Teaching, or Diploma in Early Childhood Education and Care you need to have an interview with us. We'll get in touch to arrange a time for your interview with a lecturer and pouako. This is a chance for us to get to know you and for you to ask questions. There will also be a numeracy test and literacy task.

## Supporting documents

The documents or forms we need from you depend on the programme you apply for.

This table shows what is needed, followed by more detailed information.

PROGRAMME	Student ID form with photo	Verification of Identity	Student Education Agreement form	Two confidential referee reports	Safety check	Police vet	Evidence of qualification	Teaching Council confirmation
New Zealand Diploma in Early Childhood Education (Aperfield Montessori)	✓	✓	✓	✓	✓	✓		
New Zealand Diploma in Early Childhood Education (Pasifika)	✓	✓	✓	✓	✓	✓		
New Zealand Diploma in Early Childhood Education (Home-based Care)	✓	✓	✓	✓	✓	✓		
New Zealand Diploma in Early Childhood Education and Care	✓	✓	✓	✓	✓	✓		
Bachelor of Education	✓	✓						
Bachelor of Teaching (ECE)	✓	✓	✓	✓	✓	✓		
Bachelor of Teaching (Primary)	✓	✓	✓	✓	✓	✓		
Graduate Diploma of Teaching (Primary)	✓	✓	✓	✓	✓	✓	✓	
Graduate Diploma of Teaching (ECE)	✓	✓	✓	✓	✓	✓	✓	
Postgraduate Diploma in Infant and Toddler Learning and Development	✓	✓					✓	
Postgraduate Diploma in Leadership (ECE)	✓	✓					✓	
Master of Education (ECE)	✓	✓					✓ + academic transcript	
Master of Education (Primary Education)	✓	✓					✓ + academic transcript	
ECE Diploma to Degree Upgrade Pathway	✓	✓				✓	✓	

# How to apply Te tono

## Student ID and verification form with passport photo

Those who haven't provided a photo ID (i.e. passport or license) will need to complete this form. You will find the form at [ecnz.ac.nz/forms](http://ecnz.ac.nz/forms)

Your photo needs to be passport size (30mm x 40mm), not a photocopy, no more than 12 months old and show your full face, head and shoulders in a well-lit and plain background.

## Documents to verify your identity

You need to provide proof of your name, age, Aotearoa New Zealand or Australian citizenship or permanent residency.

- If you were born in Aotearoa New Zealand or Australia, you need to give us a verified copy\* of your New Zealand or Australian birth certificate or passport.
- If you were born overseas, you need to give us a verified copy\* of your New Zealand passport, New Zealand citizenship certificate, or passport from another country with your residence class visa or permit.
- If you are an international student you will need to provide a verified copy\* of your passport and an equivalent secondary ID from your country of residence.
- If your married name is different from the name on the above documents, you need to give us a verified copy\* of your marriage certificate.

You also need to send us a verified copy\* of one of the following:

- Driver licence
- Community Services Card
- Kiwi Access (18+) card
- A New Zealand utility bill (e.g. phone, power etc.) from the past six months under your name
- IRD number
- Student photo ID from another tertiary provider
- New Zealand employee photo ID card

### \*What is a verified copy?

A verified copy is a photocopy signed by a Te Rito Maioha staff member, or a Justice of the Peace (JP), solicitor, church minister, kaumatua, police officer, school principal or Member of Parliament.

## Student Education Agreement form

This is for Bachelor of Teaching and Graduate Diploma of Teaching applicants, and Level 5 Diploma applicants who are not registered teachers. It needs to be completed by the ECE service or school you will attend while studying. You will find the form at [ecnz.ac.nz/forms](http://ecnz.ac.nz/forms)

## Confidential referee reports

This is for Bachelor of Teaching, Graduate Diploma of Teaching and Level 5 Diploma applicants only. You will need to provide information from two people (this could be your employer or someone else) who have observed you working or interacting with children or other people. They need to complete and send the form directly to [akomai@ecnz.ac.nz](mailto:akomai@ecnz.ac.nz). They cannot be your relative. You will find the form at [ecnz.ac.nz/forms](http://ecnz.ac.nz/forms)

## Safety check and police vet

To keep children safe, anyone working with tamariki in early learning, kura or schools in Aotearoa New Zealand needs to pass a safety check and/or police vet.

The safety check includes your past five years of employment history including any reasons for gaps.

Your application form includes consent for a police vet. It can take several weeks to carry out a police vet, so please send your consent form and verified copies of identification as soon as possible.

## Evidence of qualifications

For most programmes you need to show us proof of your previous qualifications. These are outlined on the page for each programme and on our website.

## Credit for prior learning

You may be able to transfer credit from previous academic achievements towards your programme. If you want us to assess whether credit can be transferred, you need to complete the Assessment of Credit for Prior Learning Form. You will find the form at [ecnz.ac.nz/forms](http://ecnz.ac.nz/forms)

We are here to help and advise. **Contact:**  
**Student Services**

**Phone:** 0800 244 532

**Email:** [akomai@ecnz.ac.nz](mailto:akomai@ecnz.ac.nz)

**Email for international students:**  
[intl@ecnz.ac.nz](mailto:intl@ecnz.ac.nz)



# UNDERGRADUATE PROGRAMMES

Tohu paetahi



# New Zealand Diploma in Early Childhood Education (Aperfield Montessori)

## Tohu Pōkairua Mātauranga Kōhungahunga (Aperfield Montessori)

Learn to reveal the unique learning potential of every child | tamaiti and enrich your practice as a Montessori kaiako.

The programme has been designed for a wide range of taura including qualified early childhood and primary kaiako, unqualified teachers, parents, carers, psychologists and other interested professionals wanting to train in the Montessori Method. This method of education is a holistic approach based on a lifetime of observation and study by Dr Maria Montessori.

Te Rito Maioha developed this programme in collaboration with the Aperfield Montessori Trust. The programme also provides a strong foundation in child well-being, learning and development in the bicultural context of Aotearoa New Zealand. Qualified ECE kaiako may gain credit for prior learning.

Some courses may be credited towards the Bachelor of Teaching (ECE), providing you with a pathway towards further study and teaching qualifications.

### Programme delivery

#### Te ara tuku

Online

Field-based

Face-to-face

Full-time or part-time

The programme consists of four courses with a blend of online and field-based learning, an orientation day and a 30 hour block course of face-to-face learning.

You may study over one year full-time\* or two years part-time\*\*. Qualified ECE kaiako who gain credit for prior learning can study full-time for six months or part-time for one year.

You will be taught by experienced Montessori-trained teachers and connected with a support network of taura and lecturers and pouako. You may also access face-to-face support from lecturers and pouako at our 11 Regional Education Centres.

**Aperfield Montessori Trust offers up to \$3,240 of your Te Rito Maioha fees paid†**

*\*(2 courses each semester)*

*\*\*\*(1 course each semester)*

†Conditions:

*You must apply for the scholarship which then pays \$3,240.00 of the fees paid to Te Rito Maioha after you have successfully completed your studies.*

*The scholarship offers to reimburse you 50% of your travel costs incurred in attending the Practical Workshop, up to the amount of \$1,000.00. Students will be required to supply relevant documentation and receipts.*

### Courses

#### Kaupapa

[The Montessori Philosophy and Methods of Teaching and Learning](#)  
Te Rapunga Whakaaro me ngā Tikanga Ako o Montessori (30 credits)

[The Montessori Philosophy and Montessori Curriculum](#)  
Te Rapunga Whakaaro me te Marautanga o Montessori (30 credits)

[Contexts of Early Childhood Education 1](#)  
Te Hā o te Ao Hurihuri 1 (30 credits)

[The Child 1](#)  
Te Hā o te Tamaiti 1 (30 credits)

#### Entry criteria

##### Ngā hiahiatanga tono

To apply for this programme, you must:

be at least 17 years old (or 18 years old for international students)

provide evidence that you will be working with children in an early childhood service

have NCEA Level 3, including 10 literacy credits at Level 2 and 10 numeracy credits at Level 1; or have equivalent experience or learning sufficient to study in the programme

provide two confidential written referee reports (not from a family member or friend)

pass a children's worker safety check and police vetting required under the Children's Act 2014

show proficiency in English if you do not have New Zealand permanent residency and English or te reo Māori are not your first languages. The minimum requirement is Academic IELTS 5.5 with no band score lower than 5, or Academic PTE 42 with no band less than 36.



“If you want to help children learn more about the Montessori method, then this is the best choice. You’ll get a great deal of support with Te Rito Maioha and I felt a sense of belonging that allowed me to be more focused on learning.

*Trin Jee - New Zealand Diploma in Early Childhood Education  
(Aperfield Montessori)*



# New Zealand Diploma in Early Childhood Education (Pasifika)

## Tohu Pōkairua Mātauranga Kōhungahunga (Pasifika)

**Kia orana. Fakaalofa lahi atu. Mālō e lelei. Tālofa lava. Tālofa ni. Ni sa bula vinaka.  
Warm Pacific greetings.**

You will gain a deeper knowledge of Pacific ways of knowing and being which you can put into practice to strengthen your understanding and skills to engage with Pacific learners, families | whānau and communities.

This Level 5 Pacific early learning programme is designed for all qualified or unqualified kaiako who want to improve their cultural competency and more effectively engage with Pacific learners and their whānau.

In addition, you will gain a strong foundation in child well-being, learning and development in the bicultural context of Aotearoa New Zealand. Qualified ECE teachers may gain credit for prior learning.

The programme aligns with Ministry of Education and Teaching Council objectives.

Some courses may be credited towards the Bachelor of Teaching (ECE), providing you with a pathway towards further study and teaching qualifications.

### Programme delivery

#### Te ara tuku

Online

Field-based

Full-time or part-time

The programme consists of four courses with a blend of online and field-based learning and an orientation day. You will have online support and connection with lecturers and pouako and other taurira. You may also access face-to-face support from lecturers and pouako at our 11 Regional Education Centres.

You may study for one year full-time\* or two years part-time\*\*. Qualified ECE kaiako who gain credit for prior learning can study part-time for one year.

### Courses

#### Kaupapa

[The Pasifika Ways of Knowing and Being 1](#)  
Ngā Matatautanga Pasifika 1 (30 credits)

[The Pasifika Ways of Knowing and Being 2](#)  
Ngā Matatautanga Pasifika 2 (30 credits)

[The Child 1](#)  
Te Hā o te Tamaiti (30 credits)

[Contexts of Early Childhood Education 1](#)  
Te Hā o te Ao Hurihuri (30 credits)

#### Entry criteria

#### Ngā hiahiatanga tono

To apply for this programme, you must:

be at least 17 years old (or 18 years old for international students)

show that you have arranged to be working (paid or voluntary) with children in a licensed early childhood service at least six hours each week

have NCEA Level 3, including 10 literacy credits at Level 2 and 10 numeracy credits at Level 1; or have equivalent experience or learning sufficient to study in the programme

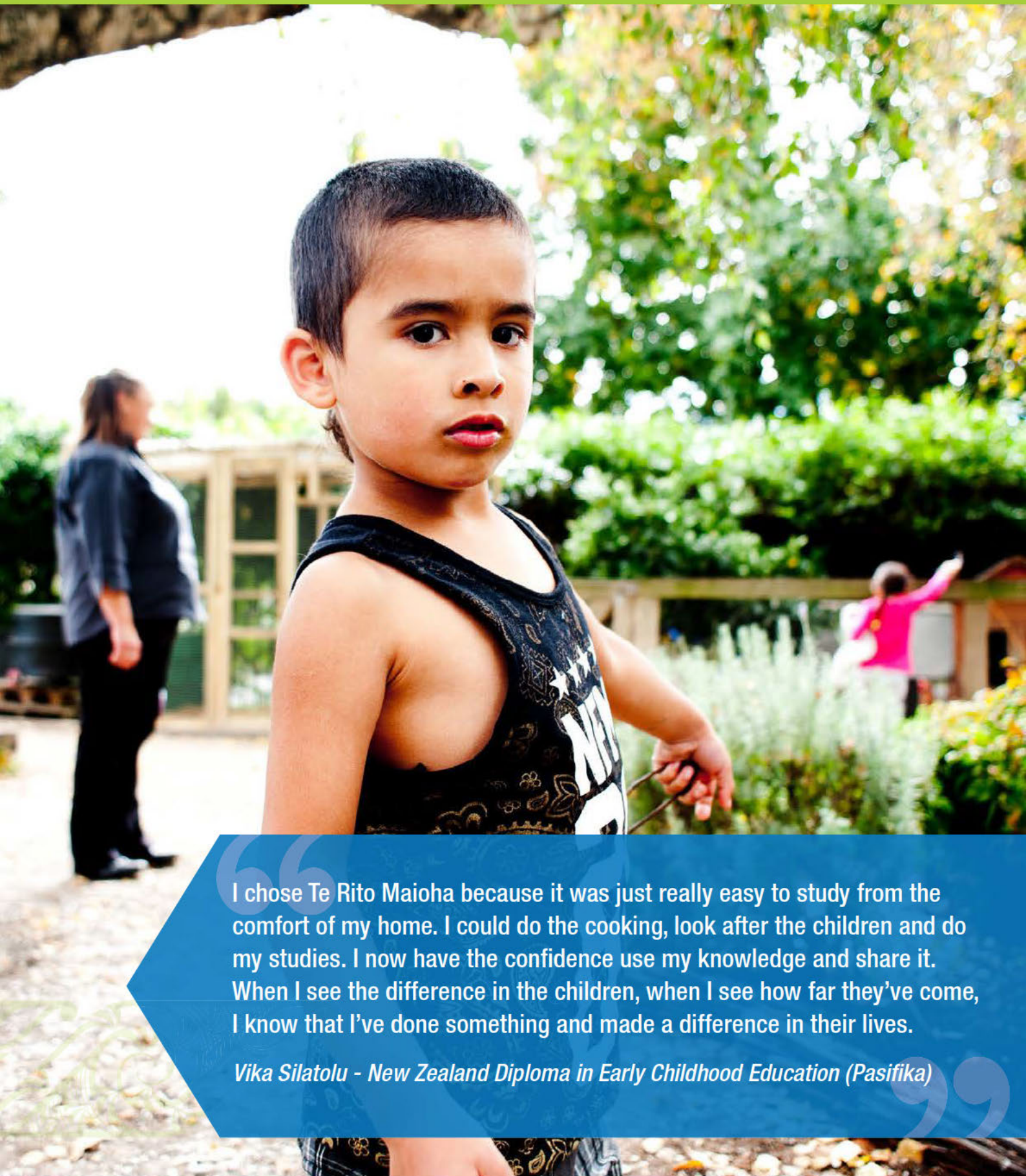
provide two confidential written referee reports (not from a family member or friend)

pass a children's worker safety check and police vetting required under the Children's Act 2014

show proficiency in English if you do not have New Zealand permanent residency and English or te reo Māori are not your first languages. The minimum requirement is Academic IELTS 5.5 with no band score lower than 5, or Academic PTE 42 with no band less than 36.

*\*(2 courses each semester)*

*\*\*\*(1 course each semester)*



I chose Te Rito Maioha because it was just really easy to study from the comfort of my home. I could do the cooking, look after the children and do my studies. I now have the confidence use my knowledge and share it. When I see the difference in the children, when I see how far they've come, I know that I've done something and made a difference in their lives.

*Vika Silatolu - New Zealand Diploma in Early Childhood Education (Pasifika)*

# New Zealand Diploma in Early Childhood Education (Home-based Care)

## Tohu Pōkairua Mātauranga Kōhungahunga (Noho Kainga)

### Learn, grow and enrich your home-based mahi with young tamariki.

You will gain deeper understanding and confidence as an educator to enrich your home-based practice with young tamariki and their whānau.

This Level 5 programme is designed for all home-based educators who want to improve their practice and knowledge, and ensure they exceed the standard required for all home-based educators.

Designed with and for the home-based sector, the programme provides a strong foundation in child well-being, early learning and development in the bicultural context of Aotearoa New Zealand.

Some courses may be credited towards the Bachelor of Teaching (ECE), providing you a pathway towards further study and teaching qualifications.

#### Programme delivery

##### Te ara tuku

##### Online

##### Full-time or part-time

The programme consists of four online courses, with online support and connection with lecturers and pouako and other taura. You may also access face-to-face support from lecturers and pouako at our 11 Regional Education Centres.

You may study for one year full-time\* or two years part-time\*\*. Qualified ECE kaiako who gain credit for prior learning can study part-time for one year.

#### Courses

##### Kaupapa

##### Understanding the Characteristics of Infants and Toddlers

E Mārama ana i ngā Āhuatanga o te Hunga Nohinohi (30 credits)

##### Empowering Infants, Toddlers and Young Children to

##### Develop Social Competence

Hei Whakamana i ngā Nohinohi, kia Whakawhanake i ngā Pukenga Whakawhanaungatanga (30 credits)

##### The Child 1

Te Hā o te Tamaiti (30 credits)

##### Contexts of Early Childhood 1

Te Hā o te Ao Hurihuri (30 credits)

#### Entry criteria

##### Ngā hiahiatanga tono

To apply for this programme, you must:

be at least 17 years old (or 18 years old for international students)

show that you have arranged to be employed by a licensed home-based early childhood service to work with children at least 12 hours a week

have NCEA Level 3, including 10 literacy credits at Level 2 and 10 numeracy credits at Level 1; or have equivalent experience or learning sufficient to study in the programme

provide two confidential written referee reports (not from a family member or friend)

pass a children's worker safety check and police vetting required under the Children's Act 2014

show proficiency in English if you do not have New Zealand permanent residency and English or te reo Māori are not your first languages. The minimum requirement is Academic IELTS 5.5 with no band score lower than 5, or Academic PTE 42 with no band less than 36.

*\*(2 courses each semester)*

*\*\* (1 course each semester)*



This course has given me the confidence to use te reo Māori within my home setting and given me the confidence that I do know how to help these children on their learning journey. And it's given me so much more knowledge that I can feed down to them on our daily programme. I'm very proud knowing where I started and where I am now and I have the confidence to carry on my learning journey.

*Stacey Piper - Diploma in ECE (Home-based Care)*

# New Zealand Diploma in Early Childhood Education and Care

## Te Tohu Pōkairua Mātauranga Kōhungahunga

### Blend theory with hands-on practice to boost your confidence and enrich your early childhood education journey.

This Level 5 programme is designed for carers, untrained kaiako, parents, nannies and other interested educators wanting to improve their practice and knowledge in early childhood education and care. It provides a strong foundation in child well-being, early learning and development in the bicultural context of Aotearoa New Zealand.

This field-based Diploma offers opportunities for putting your new learning into practice and to work alongside experienced kaiako as you study.

You will gain deeper understanding and confidence as an educator to enrich your practice with infants, toddlers and young tamariki and their whānau.

All four courses may be credited towards the first year of the Bachelor of Teaching (ECE), providing you with a seamless pathway into further study toward a teaching qualification.

#### Programme delivery

##### Te ara tuku

Online

Field-based

Full-time or part-time

The programme is a one-year full-time diploma. You may also study part-time over a longer period of time. This programme blends online learning with practical experience in early childhood centres. You will be supported during your studies by responsive lecturers and pouako, and may access in-person support at any of our 11 Regional Education Centres.

You will study three 30-credit courses and two 15-credit courses to complete the programme.

Full-time study will involve:

approximately seven hours a week of online learning and engagement, approximately 15 hours a week of independent study and 12 hours a week in a licenced early childhood centre (your home centre) supervised by a registered and certificated teacher

four weeks of teaching practicum in an early childhood centre other than your home centre

an orientation day and a two-day, one night noho marae.

#### Courses

##### Kaupapa

You will study five courses.

##### The Child 1

Te Hā o te Tamaiti 1 (30 credits)

##### Mātauranga Māori Teaching and Learning 1

Te Hā o te Iwi 1 (30 credits)

##### Contexts of Early Childhood Education 1

Te Hā o te Ao Hurihuri 1 (30 credits)

##### The Teacher as Professional 1

Te Hā o te Kaiako 1 (15 credits)

##### Professional Practice 1

Te Hā o te Ringa Ngaio 1 (15 credits)

#### Entry criteria

##### Ngā hiahia tanga tonu

To apply for this programme, you must:

be at least 17 years old (or 18 years old if you are an international student)

have NCEA Level 3, including 10 literacy credits at Level 2 and 10 numeracy credits at Level 1; or have equivalent experience or learning sufficient to study in the programme; sufficient skills and ability may be gained through work or voluntary experience or other learning

show that you have arranged to be working or volunteering with children in a licensed early childhood centre supervised by a registered teacher with a full practising certificate (Category One or Two), for:

- at least 12 hours a week; or
- at least six hours a week if you are studying part-time

provide two confidential written referee reports (not from a family member or friend)

pass a children's worker safety check and police vetting required under the Children's Act 2014

show proficiency in English if you do not have New Zealand permanent residency and English or te reo Māori are not your first languages. The minimum requirement is Academic IELTS 5.5 with no band score lower than 5, or Academic PTE 42 with no band less than 36.



# Bachelor of Education

## Tohu Paetahi Mātauranga

Open a world of career choices and make a difference to tamariki, whānau and communities with your deep understanding of effective education.

You will gain a deep and relevant knowledge of current education issues, thinking, human development and learning, advocacy, ethics, curriculum design, social and cultural identity.

This Level 7 degree programme is designed for those who want to build or advance wide-ranging careers in policy, community planning, resource development, child advocacy, leadership, management, youth or social work and more.

The programme draws on the latest national and international research and Te Rito Maioha's recognised expertise in teaching, learning and education in a bicultural context. It examines education through a social justice, bicultural and rights lens for learners | ākongā from birth to 18 years old.

International students studying offshore will gain insight into Aotearoa New Zealand's world-leading education sector and an internationally recognised qualification.

The programme offers a pathway to further study including graduate teaching qualifications and postgraduate programmes. Completion of the Bachelor of Education allows students to apply for Te Rito Maioha's Graduate Diploma of Teaching (ECE) and (Primary).

### Programme delivery

#### Te ara tuku

#### Online

#### Offshore learning option

The Bachelor of Education is a three-year full-time degree taught entirely online. The programme consists of twelve 30-credit courses, delivered at four courses per year. You will need approximately 36 hours a week for independent study.

### Courses

#### Kaupapa

The degree is based on six themes underpinning effective education:

**Theme 1** – Human development, theorists and learning

**Theme 2** – Contextual factors in education (national and international)

**Theme 3** – Advocacy and ethics in education

**Theme 4** – Cultural and social identity

**Theme 5** – Curricula design and development (social justice and rights)

**Theme 6** – Philosophies and contemporary issues

First year students will study the following 30-credit courses:

#### Education in Aotearoa New Zealand

Ko te mātauranga ki roto i Aotearoa (30 credits)

#### Cultural identity

Ahurea tuakiri (30 credits)

#### Human development

Te ira tangata (30 credits)

#### International perspectives of education

Te tirohanga mātauranga a tāwāhi (30 credits)

### Entry criteria

#### Ngā hiahiatanga tono

To study in this programme, you must:

be at least 17 years old (or 18 years old for international students)

show the skills and ability to study at tertiary level, with either:

- University Entrance or better (or overseas equivalent), including the literacy and numeracy standards needed for entrance to a New Zealand university. See [www.nzqa.govt.nz/qualifications-standards/awards/university-entrance](http://www.nzqa.govt.nz/qualifications-standards/awards/university-entrance); or
- equivalent skills and ability gained through work or voluntary experience or other learning

show proficiency in English if you do not have permanent residency and English or te reo Māori are not your first languages. The minimum requirement is Academic IELTS 6.0, with no band lower than 5.5, or Academic PTE 50 with no band less than 42.



Te Rito Maioha guided my transition into a Bachelor of Education and offered the perfect balance of flexibility to fit around my family life. I built strong relationships with my lecturers, and the course was outstanding. As a busy mum, walking across the stage and graduating was an incredible achievement - one that wouldn't have been possible without the unwavering support of Te Rito Maioha.

*Janelle Nimmo - Bachelor of Education*

# Bachelor of Teaching (ECE)

## Tohu Paetahi Whakaakoranga (ECE)

### Become an early childhood education kaiako. Study with Te Rito Maioha and make a difference to the lives of tamariki.

The Bachelor of Teaching (ECE) programme is for anyone wanting to study ECE while working or volunteering in the community.

When you study with us at Te Rito Maioha you will gain the knowledge, skills and practical experience to launch your career as a qualified early childhood kaiako. You will develop valued skills in bicultural teaching and learning, along with a deep understanding of young children's learning and development. You will gain an understanding of the Aotearoa New Zealand early childhood curriculum and how this supports professional teaching practice within Aotearoa New Zealand.

Te Rito Maioha graduates are highly valued by early childhood employers as confident and competent kaiako. Graduates demonstrate a strong understanding of the profession and have the skills to embrace te reo me ōna tikanga Māori and the cultural identities of all tamariki they teach.

#### Programme delivery

##### Te ara tuku

##### Online

##### Field-based

##### Full-time or part-time

The Bachelor of Teaching (ECE) is a three-year full-time degree. You may also study part-time over a longer period of time. This programme blends online learning with practical experience in early childhood centres. You will be supported during your studies by responsive lecturers and pouako, and may access in-person support at any of our 11 Regional Education Centres.

You will study nine 30-credit courses and six 15-credit courses to complete the programme. Full-time study will involve:

approximately seven hours a week of online learning and engagement

approximately 15 hours a week of independent study

12 hours a week in a licenced early childhood centre (your home centre) supervised by a registered and certificated teacher

four weeks a year (five in year three) completing teaching practicum in an early childhood centre other than your home centre

an orientation day in year one and a two-day, one night noho marae each year.

#### Courses

##### Kaupapa

In your first year, you will study five courses. You will further explore these themes in years two and three.

##### The Child 1

Te Hā o te Tamaiti 1 (30 credits)

##### Mātauranga Māori Teaching and Learning 1

Te Hā o te Iwi 1 (30 credits)

##### Contexts of Early Childhood Education 1

Te Hā o te Ao Hurihuri 1 (30 credits)

##### The Teacher as Professional 1

Te Hā o te Kaiako 1 (15 credits)

##### Professional Practice 1

Te Hā o te Ringa Ngaio 1 (15 credits)

#### Entry criteria

##### Ngā hiahia tanga tonu

To apply for this programme, you must:

be at least 17 years old (or 18 years old if you are an international student)

show the skills and ability to study at tertiary level, either:

- University Entrance or better (or overseas equivalent), including the literacy and numeracy standards needed for entrance to a New Zealand university. See [www.nzqa.govt.nz/qualifications-standards/awards/university-entrance](http://www.nzqa.govt.nz/qualifications-standards/awards/university-entrance)
- sufficient skills and ability gained through work or voluntary experience or other learning

show that you have arranged to be working or volunteering with children in a licensed early childhood centre

be supervised by a registered teacher with a full practising certificate (Category One or Two), for:

- at least 12 hours a week; or
- at least six hours a week if you are studying part-time

provide two confidential written referee reports (not from a family member or friend)

pass a children's worker safety check and police vetting required under the Children's Act 2014

show proficiency in English if English or te reo Māori is not your first language. The minimum is Academic IELTS 7 for all band scores, or PTE Academic Listening 61, Reading 62, Writing 73, Speaking 79, Overall 69 for all band scores, or equivalent. See <https://teachingcouncil.nz/getting-certificated-for-overseas-trained-teachers/language-competency-requirements>



I had looked around for other places to study, but it was the welcoming, the warmth, and the atmosphere from the lecturers that made it a great place for learning. There was always a lecturer there to help you, to have a kōrero, and to support you. With the guidance of the staff, I've graduated and now I'm educating the next generation, and I get to blow bubbles and climb trees for a living! I completely dug it. I would recommend Te Rito Maioha to anyone.

*Noe Soames - Bachelor of Teaching (ECE)*



# Bachelor of Teaching (Primary)

## Tohu Paetahi Whakaakoranga (Kura Tuatahi)

Learn and grow into a valued primary school kaiako for tamariki in your community, wherever you live in Aotearoa New Zealand.

You will gain real-life experience, professional knowledge and bicultural skills to launch your career as a confident and competent kaiako, working with tamariki from year zero to year ten.

Te Rito Maioha taura are highly valued by primary and intermediate school principals as confident and competent student teachers who become involved members of the school community.

You will gain strong understanding of the profession and the skills to embrace te reo me ōna tikanga Māori, Pacific culture and the cultural identities of all tamariki you teach.

Throughout the length of this programme (three years full-time/six years part-time), you will put your online learning into practice and build your confidence, with two days a week field-based practice in a school plus 13 weeks of practicum professional placements. At the beginning stage you will explore what it means to be a reflective, ethical, culturally responsive and child-centred kaiako. In stages two and three, you will build your understanding of the Aotearoa New Zealand curriculum and human learning and development.

The Bachelor of Teaching (Primary) allows successful applicants to qualify as a primary school teacher from anywhere in Aotearoa New Zealand. You can study while remaining in your own community, supported by skilled and responsive lecturers, pouako and associate teachers. The combination of blended online learning and practical experience in schools means that successful graduates are well prepared to become qualified, registered primary kaiako.

### Programme delivery

#### Te ara tuku

#### Online

#### Field-based

#### Full-time or part-time

The Bachelor of Teaching (Primary) may be studied for three years full-time, or six years part-time.

You will study nine 30-credit courses and six 15-credit courses to complete the programme. Full-time study will involve:

about nine hours a week of online learning and engagement

about 16 hours a week of independent study

two days a week of field-based practice in the role of a student teacher in a primary, intermediate or area school supervised by a registered and certificated teacher

three periods of continuous practice (four weeks in stages one and two, and five weeks in stage three) in practicum placements in a range of schools and year levels

an orientation day in year one and a two-day, one night noho marae each year.

### Courses

#### Kaupapa

In your first year, you will study five courses. You will further explore these themes in years two and three.

#### Mātauranga Māori Teaching and Learning 1

Te Hā o te Iwi 1 (30 credits)

#### Teaching and Learning as a Professional 1

Te Hā o te Tangata Mātanga 1 (30 credits)

#### Human Development for Teaching and Learning 1

Te Hā o te Tipu 1 (30 credits)

#### The Practice of Teaching 1 Te Hā o te Kaiako 1 (15 credits)

#### Professional Practice 1 Te Hā o te Ringa Ngaio 1 (15 credits)

### Entry criteria

#### Ngā hiahiatanga tono

To apply for this programme, you must:

be at least 17 years old (or 18 years old if you are an international student)

show the skills and ability to study at tertiary level, with either:

- University Entrance or better (or overseas equivalent), including the literacy and numeracy standards needed for entrance to a New Zealand university. See [www.nzqa.govt.nz/qualifications-standards/awards/university-entrance](http://www.nzqa.govt.nz/qualifications-standards/awards/university-entrance); or

- sufficient skills and ability gained through work or voluntary experience or other learning

have a school willing to support your field-based practice as a student teacher for two days a week during semester time. (If you do not have a school identified, we can support you to find one)

provide two confidential written referee reports (not from a family member or friend)

pass a children's worker safety check and police vetting required under the Children's Act 2014

pass the Literacy and Numeracy for Adults Assessment Tool (LNAAT) prior to the programme start date as required by the Teaching Council of Aotearoa New Zealand

show proficiency in English if English or te reo Māori is not your first language. The minimum is Academic IELTS 7 for all band scores, or PTE Academic Listening 61, Reading 62, Writing 73, Speaking 79, Overall 69 for all band scores, or equivalent. See <https://teachingcouncil.nz/getting-certificated-for-overseas-trained-teachers/language-competency-requirements>



“Te Rito Maioha is a very welcoming space that almost feels like family. I was able to study and still support my family financially. They encouraged me to include my Te Ao Māori and my Te reo Māori - it was crazily amazing! For me, the greatest reward as a teacher is seeing the students thrive, seeing how they develop under my guidance and allowing them to be who they are.

*Anahera Tutengaehe - Bachelor of Teaching (Primary)*



## Success Story

### Uplifting and empowering children as taonga

#### Zariah Baty Bachelor of Teaching (ECE)



**Zariah chose to become an early childhood teacher because she wanted to make a meaningful difference in her community by supporting tamariki from a young age. Recognising that the early years are a critical time to build confidence, capability, and a strong sense of identity, she enrolled with Te Rito Maioha so she could study locally.**

At just 22, Zariah Baty is already making a meaningful difference in the lives of tamariki in her community. Based in Gisborne, Zariah chose a career in early childhood education with a clear sense of purpose, to help children grow into confident, capable individuals from the very beginning of their learning journey. “I wanted to help the tamariki in my community succeed from a young age. I know the impact I can have on them.”

In March, Zariah graduated with a Bachelor of Teaching (ECE), celebrating alongside her whānau, friends, and her eight-month-old baby, a moment she describes as one of the proudest of her life. Her journey reflects both determination and the ability to balance study, family, and community commitments.

Choosing to study with Te Rito Maioha Early Childhood New Zealand allowed Zariah to remain grounded in her community while gaining a high-quality qualification. “I wasn’t sure where I wanted to study, but I knew I didn’t want to leave home. Studying online meant I could stay connected to my community and the support I received was incredible.”

Throughout her studies, Zariah was supported by dedicated tutors who were invested in her success. “All the staff just want to see you succeed. I had my baby in the second half of my final semester, and I honestly don’t think I would have finished without their encouragement and support.”

A key part of the programme is practical, hands-on experience within an early childhood setting. Zariah completed her placement at Awhi Tairāwhiti Early Learning Centre, where she worked with children aged six months to five years. This real-world learning not only strengthened her skills but led directly to full-time employment. “Being able to apply what you’re learning every day makes such a difference. You learn so much on the floor, supported by a mentor who guides you along the way.”

Affiliated with Ngāti Porou and Te Aitanga-a-Māhaki, Zariah brings a strong cultural lens to her teaching practice. “Through a te ao Māori lens, tamariki are taonga. It’s about uplifting and empowering them to succeed as themselves.”

Her advice for future students is simple: approach the profession with care, respect, and belief in the potential of every child. “Be caring and uplifting. Tamariki are more capable than we often think, and you get to build real connections and share in so many special moments.”



# GRADUATE PROGRAMMES

Tohu pōkairua paetahi



# Graduate Diploma of Teaching (Primary)

## Pōkairua Paetahi Ako (Kura Tuatahi)

Wherever you live, turn your degree into a career as a primary school kaiako for tamariki in your community.

You will gain real-life experience, professional knowledge and bicultural skills to launch your career as a confident and competent kaiako, working with tamariki from year zero to year ten.

You will put your online learning into practice and build your confidence, with two days a week field-based practice in a school plus 12 weeks of practicum professional placements.

You will build your understanding of the Aotearoa New Zealand curriculum and explore what it means to be a reflective, ethical, culturally responsive and child-centred kaiako. You will gain the skills to embrace te reo me ōna tikanga Māori, Pacific culture and the cultural identities of all tamariki you teach.

The Graduate Diploma of Teaching (Primary) programme is for people with a degree wanting a career in primary school teaching, including those in areas where campus-based tertiary education is less accessible. It will also suit overseas-qualified teachers seeking an Aotearoa New Zealand qualification and a strong foundation in bicultural teaching and learning.

### Programme delivery

#### Te ara tuku

Online

Field-based

Full-time or part-time

The Graduate Diploma of Teaching (Primary) may be studied for one year full-time, or two years part-time. You will study four 30-credit courses and two 15-credit courses to complete the programme.

You can study while you live and work in your own community, supported by lecturers and pouako and teachers.

Full-time study will involve:

approximately eight hours a week of online learning and engagement

approximately 16 hours a week of independent study

two days a week of field-based practice in the role of a student teacher in a primary, intermediate or area school supervised by a registered and certificated teacher

two practicum periods of five weeks and seven weeks to gain professional experience in a range of schools

an in-person orientation of three days in Wellington (or other locations depending on numbers) at the start of the programme (January or July) and then a one day online orientation in July or January (depending on start date)

a two-day, one night noho marae experience each year.

### Courses

#### Kaupapa

[Becoming a teaching professional through the lens of literacy, mathematics and health and physical education](#)

Te kaiako ringa ngaio ki te arotahi pānuitanga, pāngarau me te whakapakari tinana (30 credits)

[Becoming a culturally responsive teacher through the lens of social science and the arts](#)

Te kaiako whakaratarata ahurea ki te arotahi o te pūtaiao pāpori me te mahi toi (30 credits)

[Teacher as weaver of curriculum through the lens of science and technology](#)

Te kaiako raranga o te marau mātauranga: ki te arotahi o te pūtaiao me hangarau (30 credits)

[The teacher as a leader of learning and problem solver](#)

Te kaiako he kaiarataki te akoranga me te rapanga (30 credits)

[Practicum 1: Professional Experience](#)

Ritenga ako: Wheako ngaio tahi (15 credits)

[Practicum 2: Professional Experience](#)

Ritenga ako: Wheako ngaio rua (15 credits)

### Entry criteria

#### Ngā hiahiatanga tono

To apply for this programme, you must:

hold a Level 7 Bachelor's degree or higher. If you gained your qualifications overseas, you need an NZQA assessment report

have a school willing to support your field-based practice as a student teacher for two days a week during semester time. (If you do not have a school identified, we can support you to find one)

provide two confidential written referee reports (not from a family member or friend)

pass a children's worker safety check and police vetting required under the Children's Act 2014

pass the Literacy and Numeracy for Adults Assessment Tool (LNAAT) prior to the programme start date as required by the Teaching Council of Aotearoa New Zealand

show proficiency in English if English or te reo Māori is not your first language. The minimum is Academic IELTS 7 for all band scores, or PTE Academic Listening 61, Reading 62, Writing 73, Speaking 79, Overall 69 for all band scores, or equivalent. See <https://teachingcouncil.nz/getting-certificated-for-overseas-trained-teachers/language-competency-requirements>



I initially chose to study at Te Rito Maioha because I had heard about how amazing and supportive they were. If you're juggling a personal life, like having a family, the online and field-based study that Te Rito Maioha offers really worked for me, having that flexibility and the support of amazing kaiako.

*Zoe Hunter-Pryde - Graduate Diploma of Teaching (Primary)*

# Graduate Diploma of Teaching (ECE)

## Te Poutama ki te Pakaritanga (ECE)

### Grow your love of learning into a career teaching tamariki in early childhood education.

You will gain knowledge, skills and weekly field-based experience to become a qualified early childhood kaiako in this intensive programme for graduates.

Study online and work in an early childhood education centre from anywhere in Aotearoa New Zealand, supported by skilled and responsive lecturers and pouako.

From the very beginning of your study, you will put your online learning into practice and build your confidence with two days a week field-based practice in an early childhood education centre plus two blocks of five weeks of practicum placements.

You will bring your inquiry skills, focus and commitment to develop as a culturally responsive and reflective kaiako with a strong understanding of bicultural teaching and learning.

You will explore, apply and build your skills in professional teaching practice and leadership, te reo me ōna tikanga Māori, children's learning and development and the early childhood curriculum.

The programme is for people with a degree who want a career in early childhood teaching, including those in areas where campus based tertiary education is less accessible.

It will also suit overseas-qualified teachers seeking an Aotearoa New Zealand qualification and a strong foundation in bicultural teaching and learning.

#### Programme delivery

##### Te ara tuku

Online

Field-based

Face-to-face

Full-time or part-time

The Graduate Diploma of Teaching (ECE) is an intensive Level 7 programme of study requiring considerable commitment and focus. You may study full-time for one year or part-time over two years.

Blending face-to-face and online learning with experience in early childhood education centres, you will be supported by responsive lecturers and pouako. You may also access in-person support at any of our 11 Regional Education Centres.

Full-time study will involve:

about 7.5 hours a week of online learning and engagement

about 14.5 hours a week of independent study

13 hours a week (2x 6.5 hours per day) of field-based practice in a licensed early childhood education centre supervised by a registered, qualified ECE teacher (your home centre)

two five-week teaching practicums to gain professional experience in an early childhood education centre other than your home centre

two three-day face-to-face block courses which include a one day noho marae experience in either Auckland, Wellington or Christchurch

#### Courses

##### Kaupapa

[The Culturally Responsive Teacher](#) Tikanga-ā-iwi (30 credits)

[Understanding Children and Childhood](#) Tamarikitanga (15 credits)

[Teacher as Inquirer 1](#) Te Kaimahira 1 (15 credits)

[Practicum 1](#) Whakatātare 1 (15 credits)

[Teacher as a Critical Pedagogue](#) Kaiwhakamanawa (30 credits)

[Teacher as Emergent Leader](#) Mana Whakatipu (15 credits)

[Teacher as Inquirer 2](#) Te Kaimahira 2 (15 credits)

[Practicum 2](#) Whakatātare 2 (15 credits)

#### Entry criteria

##### Ngā hiahiatanga tono

To apply for this programme, you must:

hold a relevant\* Level 7 Bachelor's degree or higher; or a Diploma of Primary Teaching approved by the Teacher Registration Board or Teaching Council. If you gained your qualifications overseas, you need an NZQA assessment report

show that you have arranged to be working or volunteering with tamariki in a licensed early childhood education centre for at least two days (13 hours) a week, supervised by a registered teacher with a full practising certificate.

provide two confidential written referee reports (not from a family member or friend).

pass a children's worker safety check and police vetting required under the Children's Act 2014

show proficiency in English if English or te reo Māori is not your first language. The minimum is Academic IELTS 7 for all band scores, or PTE Academic Listening 61, Reading 62, Writing 73, Speaking 79, Overall 69 for all band scores, or equivalent. See <https://teachingcouncil.nz/getting-certificated/for-overseas-trained-teachers/language-competency-requirements>

\*Relevance is determined by Te Rito Maioha



Te Rito Maioha was a really cool place to study with understanding, caring lecturers who were always there to help you. I was impressed with the amount of te reo the pouako actually use, and that strengthened me to use more of my language out in the world. As teachers we have the opportunity to instill those whanaungatanga, manaakitanga beliefs into our tamariki, and Te Rito Maioha has given me the confidence and skills to make that happen.

*Stacey Alvarez - Graduate Diploma of Teaching (ECE)*



# Success Story

## I always wanted to be a teacher

### Geneva Fraser - Graduate Diploma (ECE)



**Local Christchurch girl Geneva Fraser came back to New Zealand during COVID for the safety of home and to be close to family. Little did she know that a worldwide health emergency would lead to a Grad Dip (ECE) from bicultural education provider Te Rito Maioha.**

Geneva has always had a connection to teaching, “I grew up coaching in the local pony club and later teaching yoga. I always knew I wanted to be a teacher. Teaching felt really natural to me and I wanted to share what I know.”

“Graduating is pretty exciting, because Te Rito Maioha do things differently from some of the larger education providers. We’re allocated six tickets to the ceremony which means I can bring my dad and his partner, my mum and partner, my boyfriend and friend. It’s that kind of inclusiveness that sets Te Rito Maioha apart. We also get to choose where we graduate because Te Rito Maioha have 11 regional locations, which can be really important if your family and friends are in a different part of the country, and you want to celebrate with them.”

“Te Rito Maioha is like that from the very first moment you interact with them. It’s as if they’re welcoming you into their whānau. The first thing I noticed was the lecturers knew my name, and over time you become aware that they are genuinely invested in your success, in the same way your own family want you to succeed. The staff

always welcomed feedback, which ensured learning was a two-way street and I never felt like a number which is something I’ve experienced before. At Te Rito Maioha I was always ‘Geneva’.”

“The bicultural nature of Te Rito Maioha was also a real plus as we got to experience and feel comfortable in situations such as pōwhiri, where we shared kai and I found those experiences very personal.”

Geneva is the first of the Mana in Mahi participants to graduate with a teaching qualification. Mana in Mahi means strength in work and was launched by MSD in August 2018. The programme assists people who need extra help to get into long term work, so they receive the training and careers they deserve.

“I found it so helpful, especially after the uncertainty that Covid created. The programme gave me somewhere to work and I’m so grateful as they paid for my study. For me, removing those barriers was really important and the financial support was a big incentive.”

To continue reading please visit:  
[www.ecnz.ac.nz/articles/success-stories](http://www.ecnz.ac.nz/articles/success-stories)



# POSTGRADUATE PROGRAMMES

Tohu pōkairua tautara



# Postgraduate Diploma in Infant and Toddler Learning and Development

## Pōkairua Tautara i te Akoranga Kōhungahunga me te Whanaketanga

**The first 1,000 days of a child's life will shape their future. Study to specialise in infant and toddler learning and development.**

You will gain expertise in infant and toddler learning, development and wellbeing, with an emphasis on whanaungatanga | relationships, orangatanga | wellbeing, matapakinga | dialogue, marautanga | curriculum, and te taiao | the environment.

This Level 8 qualification is designed for professionals with a particular interest in infant and toddler learning and development, who want to specialise in this vital area.

The programme uses theories and research from multiple disciplines to support a holistic view of learning and development. This interdisciplinary learning can be applied in practice to support positive outcomes for infants, toddlers, and their whānau.

When you graduate with the Postgraduate Diploma in Infant and Toddler Learning and Development you have the opportunity to progress to our Level 9 Master of Education. Credit from this programme will contribute to the Master of Education degree.

### Programme delivery

#### Te ara tuku

[Online](#)

[Full-time or part-time](#)

[Offshore learning option](#)

The Postgraduate Diploma in Infant and Toddler Learning and Development can be completed over one academic year of full-time study or two years of part-time study. You will study four 30-credit courses, each 16 weeks long.

For part-time study, you need to set aside up to 18 hours a week for directed and independent study, including online engagement. For full-time study, you need to set aside up to 36 hours a week.

You will have online support and connection with lecturers and pouako and other taura. You may also access face-to-face support from lecturers and pouako at our 11 Regional Education Centres.

### Courses

#### Kaupapa

[The First Thousand Days](#)

Ngā rā Tuamano (30 credits)

[Infant and Toddler Learning and Wellbeing](#)

Tamariki Kōhungahunga Akoranga me te Orangatanga (30 credits)

[Infant and Toddler Curriculum and Environments](#)

Tamariki Kōhungahunga Marautanga me te Taiao (30 credits)

[Dialogic Pedagogy](#)

Matapakinga Mātauranga (30 credits)

### Entry criteria

#### Ngā hiahiatanga tono

To apply for this programme, you must:

hold a relevant\* NZQA-equivalent Level 7 degree or diploma in education or related fields.

show proficiency in English if English or te reo Māori is not your first language. The minimum requirement is Academic IELTS 6.5 with no band score less than 6.0, or Academic PTE 58 with no band less than 50.

*\*Relevance is determined by Te Rito Maioha*



This course is an asset to anyone wanting to delve deeper into how infants and toddlers learn and develop. I know the knowledge I have gained is and will continue to benefit and enhance my teaching practice. I have also learnt a lot about myself, especially that I am much more confident and capable than I thought I was.

*Trudy Brakey - Postgraduate Diploma in Infant and Toddler Learning and Development*



# Postgraduate Diploma in Leadership (ECE)

## Te Titohu i te Ārahitanga (ECE)

**Great early childhood education depends on great leadership. Grow your skills and career with this work-based leadership programme for current and aspiring leaders.**

You will gain tools and skills you can put into use from day one with a strong emphasis on work-based leadership practice.

This Level 8 postgraduate qualification programme is for professionals who aspire to grow as leaders or lift their current leadership skills to make more difference.

You will connect with other taurira, engage with current research, read widely and reflect to become more insightful and effective as a leader. You will develop and expand your skills and thinking – from motivating and transforming teams to leading pedagogical change, positive organisations and sustainable change for tamariki and whānau.

When you graduate with the Postgraduate Diploma in Leadership (ECE) you have the opportunity to progress to our Level 9 Master of Education. Credit from this programme lets you enter the Master of Education degree only needing to complete 120 credits.

Students who complete the Leading Pedagogical Change and Leading Teams courses may graduate with a Postgraduate Certificate in Leadership (ECE) – Te Tiwhikete Paerua i te Ārahitanga (ECE).

### Programme delivery

#### Te ara tuku

##### Online

##### Full-time or part-time

The Postgraduate Diploma in Leadership (ECE) can be completed in one academic year of full-time study, or part-time over two years. You will study four 30-credit courses – three core courses and one elective course - each 16 weeks long.

For part-time study, you need to set aside up to 18 hours a week for directed and independent study, including online engagement. For full-time study, you need to set aside up to 36 hours a week. Most students choose to study in this programme part-time.

### Courses

#### Kaupapa

You will study three core courses and choose one elective course.

#### Core courses:

##### Leading Teams

Te Ārahi Tira (30 credits)

##### Leading Pedagogical Change

Te Ārahi Huringa Tikanga Whakaako (30 credits)

##### Māori Leadership

Te Ārahitanga Māori i te Mātauranga Kōhungahunga (30 credits)

#### Elective courses – choose one:

##### Organisational Leadership

Te Ārahitanga ā-Whakahaere (30 credits)

##### Leading Social Change

Te Ārahi Huringa Pāpori (30 credits)

##### Pasifika Leadership

Te Ārahitanga Moana-Nui-A-Kiwa i te Mātauranga Kōhungahunga (30 credits)

### Entry criteria

#### Ngā hiahia tanga tonu

To apply for this programme, you must:

be a qualified teacher

be working in an ECE service or in an organisation that has an ECE-related focus

show proficiency in English if you do not have permanent residency and English or te reo Māori is not your first language. The minimum requirement is Academic IELTS 6.5 with no band score less than 6.0, or Academic PTE 58 with no band less than 50.



Wow what can I say? I just finished my teacher appraisals today and the rich feedback that I received from my team about loving their jobs and enjoying being a professional teacher was very heartwarming. The rich kōrero and learning that has happened for me this year during my studies has made a massive impact on our early learning service. I have learnt so much and I appreciate every single whakairo.

*Katrina Brewer - Postgraduate Diploma in Leadership (ECE)*

# Master of Education (ECE)

## Tohu Paerua Kōhungahunga

### Grow your research-based knowledge in early childhood education or deep dive into topics you're passionate about with a Master of Education.

You will benefit from our recognised expertise and passion for research, teaching and early childhood education.

You will connect online with supportive lecturers and pouako and a community of other taura, engage with current research, read widely and expand your knowledge and thinking.

This Level 9 Master's qualification will appeal to people who want to:

- further their research-based knowledge
- specialise in areas such as leadership, biculturalism, mātauranga Māori, inclusive education, curriculum, evaluation and infant and toddler pedagogy, and practice-based inquiry.

#### Entry criteria

##### Ngā hiahiatanga tono

You have three pathways to complete your degree depending on your choice and your qualification:

##### 1. Master's by thesis or primarily by thesis

You must have a postgraduate diploma or a bachelor's degree with honours.

##### 2. Master's by course work and thesis

You must have an undergraduate bachelor's degree or equivalent (at level 7 on the NZQF).

##### 3. Master's by course work only

You must have an undergraduate bachelor's degree or equivalent (at level 7 on the NZQF).

The usual entry criterion is a grade average of at least a 'B'. Applicants must provide a copy of their academic transcript.

International applicants must hold an equivalent qualification recognised by NZQA. You must also show proficiency in English if you do not have permanent residency and English or te reo Māori is not your first language. The minimum requirement is Academic IELTS 6.5 with no band score less than 6.0, or Academic PTE 58 with no band less than 50.

#### Courses

##### Kaupapa

Students on the Master's by course work only pathway, and the Master's by course work and thesis pathway, can choose from these 30-credit courses.

##### Semester one courses - Level 9:

- Research Methods Course: Tikanga Rangahau
- Bicultural Teaching and Learning: Ngā Tikanga Whakaako Kākano Rua
- Evaluation in Practice: Arotakenga Ariā Whakahāngai
- Inclusive Education: He Mātauranga Whakawhāiti
- Professional Learning and Inquiry: Tupuranga Ngaio
- Philosophies That Inform the Montessori Curriculum: Te Kaupapa Rapunga Whakaaro o te Marautanga Montessori

##### Semester one courses - Level 8:

- Leading Teams: Ngā Tira Ārahi
- Māori Leadership: Te Ārahitanga Māori i te Mātauranga Kōhungahunga
- The First Thousand Days: Ngā Rā Tuamano
- Infant and Toddler Learning and Wellbeing: Tamariki Kōhungahunga Akoranga me te Orangatanga
- Dialogic Pedagogy: Matapakinga Mātauranga

##### Semester two courses - Level 9:

- Research Methods Course: Tikanga Rangahau
- Mātauranga Māori
- Curriculum Studies: Te Akoranga Marautanga
- Integrating Montessori with Indigenous Knowledge: Te Whakakotahitanga a Montessori ki ngā Mātauranga Māori

##### Semester two courses - Level 8:

- Leading Pedagogical Change: Te Ārahi Huringa Tikanga Whakaako
- Pasifika Leadership – Hautūtanga ā Tangata Moana
- Organisational Leadership: Te Ārahitanga ā-Whakahaere
- Leading Social Change: Te Ārahi Huringa Pāpori
- The First Thousand Days: Ngā Rā Tuamano
- Infant and Toddler Curriculum and Environments: Tamariki Kōhungahunga Marautanga me te Taiao
- Dialogic Pedagogy: Matapakinga Mātauranga

#### Programme delivery

##### Te ara tuku

##### Online learning

##### Offshore learning option

##### Master's by thesis or primarily by thesis

(1 year full-time or 2 years part-time)

For this 120-credit programme, you will complete the compulsory 30-credit Research Methods course and a 90-credit Research Thesis

##### Master's by course work and thesis

(18 months full-time or 3 years part-time)

For this 180-credit programme, you will complete three 30-credit courses including the compulsory Research Methods course, before you undertake your 90-credit Research Thesis. You may choose from a suite of Level 8 and 9 courses

##### Master's by course work only

(18 months full-time or 3 years part-time)

For this programme, you will complete four to six 30-credit courses including the compulsory Research Methods course (Note: number of courses depends on your entry qualifications). You may choose from a suite of Level 8 and 9 courses. Full-time students will study two courses per semester.



Te Rito Maioha is the third tertiary provider that I've studied through and the big difference for me was that sense of whanaungatanga. I really felt supported. I really felt like there was so much taitoko, so much awahi. If I ever needed anything, there were always people at hand such as my supervisor who was so supportive and encouraging. It felt really personal and I haven't had that experience before as a student.

*Sarah Knipping-Boyle - Master of Education (ECE)*



# Master of Education (Primary Education)\*

## Tohu Paerua Kura Tuatahi

### Grow your research-based knowledge in primary education or deep dive into topics you're passionate about with a Master of Education.

You will benefit from our recognised expertise and passion for research, teaching and primary education.

You will connect online with supportive lecturers and pouako and a community of other taura, engage with current research, read widely and expand your knowledge and thinking.

This Level 9 master's qualification will appeal to people who want to:

- further their research-based knowledge
- specialise in areas such as leadership, biculturalism, mātauranga Māori, inclusive education, ECE and primary curriculum, primary assessment, evaluation and practice-based inquiry.

#### Entry criteria

##### Ngā hiahiatanga tono

You have three pathways to complete your degree depending on your choice and your qualification:

##### 1. Master's by thesis or primarily by thesis

You must have a postgraduate diploma or a bachelor's degree with honours.

##### 2. Master's by course work and thesis

You must have an undergraduate bachelor's degree or equivalent (at level 7 on the NZQF).

##### 3. Master's by course work only

You must have an undergraduate bachelor's degree or equivalent (at level 7 on the NZQF).

The usual entry criterion is a grade average of at least a 'B'. Applicants must provide a copy of their academic transcript.

International applicants must hold an equivalent qualification recognised by NZQA. You must also show proficiency in English if you do not have permanent residency and English or te reo Māori is not your first language. The minimum requirement is Academic IELTS 6.5 with no band score less than 6.0, or Academic PTE 58 with no band less than 50.

#### Courses

##### Kaupapa

Students on the Master's by course work only pathway, and the Master's by course work and thesis pathway, can choose from these 30-credit courses.

##### Semester one courses - Level 9:

- Research Methods Course: Tikanga Rangahau
- Bicultural Teaching and Learning: Ngā Tikanga Whakaako Kākano Rua
- Evaluation in Practice: Arotakenga Ariā Whakahāngai
- Inclusive Education: He Mātauranga Whakawhāiti
- Philosophies that inform the Montessori curriculum: Te Kaupapa rapunga whakaaro o te marautanga Montessori
- Assessment in Primary Education: Concepts and Trends Ngā āhuatanga a te aromatawai
- Professional Learning and Inquiry: Tupuranga ngaio

##### Semester one courses - Level 8:

- Leading Teams: Ngā Tira Ārahi
- Māori Leadership: Te Ārahitanga Māori i te Mātauranga Kōhungahunga
- The First Thousand Days: Ngā Rā Tuamano
- Infant and Toddler Learning and Wellbeing: Tamariki Kōhungahunga Akoranga me te Orangatanga
- Dialogic Pedagogy: Matapakinga Mātauranga

##### Semester two courses - Level 9:

- Research Methods Course: Tikanga Rangahau
- Mātauranga Māori
- Curriculum Studies: Te Akoranga Marautanga
- Curriculum in Primary Education: Context and Influences Ngā horopaki a te marautanga
- Integrating Montessori with Indigenous Knowledge: Te Whakakotahitanga a Montessori ki ngā Mātauranga Māori

##### Semester two courses - Level 8:

- Leading Pedagogical Change: Te Ārahi Huringa Tikanga Whakaako
- Pasifika Leadership – Hautūtanga ā Tangata Moana
- Organisational Leadership: Te Ārahitanga ā-Whakahaere
- Leading Social Change: Te Ārahi Huringa Pāpori
- The First Thousand Days: Ngā Rā Tuamano
- Infant and Toddler Curriculum and Environments: Tamariki Kōhungahunga Marautanga me te Taiao
- Dialogic Pedagogy: Matapakinga Mātauranga

#### Programme delivery

##### Te ara tuku

##### Online learning

##### Offshore learning option

##### Master's by thesis or primarily by thesis

(1 year full-time or 2 years part-time)

For this 120-credit programme, you will complete the compulsory 30-credit Research Methods course and a 90-credit Research Thesis

##### Master's by course work and thesis

(18 months full-time or 3 years part-time)

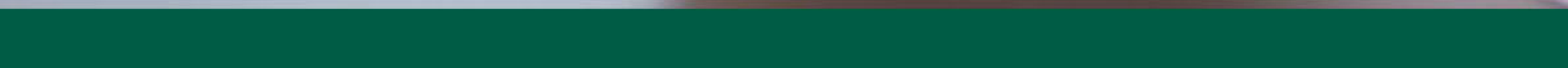
For this 180-credit programme, you will complete three 30-credit courses being the compulsory Research Methods, Primary Assessment, and Primary Curriculum courses, before you undertake your 90-credit Research Thesis. You may choose from a suite of Level 8 and 9 courses

##### Master's by course work only

(18 months full-time or 3 years part-time)

For this programme, you will complete four to six 30-credit courses including the compulsory Research Methods course (Note: number of courses depends on your entry qualifications). You may choose from a suite of Level 8 and 9 courses. Full-time students will study two courses per semester.

\*Delivery subject to NZQA approval





# **OTHER PROGRAMMES**

## Ngā hōtaka atu



# ECE Diploma to Degree Upgrade Pathway

## Titohu Whakamohoa

### Grow your knowledge, enhance your skills and boost your career by upgrading your ECE diploma to a degree.

This part-time course is for those with an ECE teaching diploma who would like to upgrade to a Level 7 Bachelor of Teaching (ECE). Being part-time, you will be able to keep working while you study.

You will gain a Bachelor of Teaching (ECE) with a deeper understanding of:

- curriculum design, assessment and inquiry
- inclusion, exclusion and marginalisation in ECE settings
- infants and toddlers
- mātauranga Māori
- leadership in early childhood education.

#### Programme delivery

Te ara tuku

Online

The programme consists of three 12-week courses and one 16-week course. It may be studied part time over one or two years.

The 16-week course Mātauranga Māori Teaching and Learning | Te Hā o te Iwi includes a noho marae experience. You may not need to complete the course if:

you received your diploma from Te Tari Puna Ora o Aotearoa/New Zealand Childcare Association (the previous name for Te Rito Maioha Early Childhood New Zealand), or

you can show you are competent in te reo Māori me ōna tikanga Māori.

Study requirements include:

approximately 12 hours of study per week made up of independent study and online teaching and learning

access to an early childhood service to complete assessment work related to research topics, child study and implementation of a te reo Māori resource.

#### Courses

##### Kaupapa

##### [Infants and Toddlers](#)

Te Hā o te Ao Kōhungahunga (20 credits)

##### [Teacher as Weaver of Curriculum](#)

Te Hā o te Marau Kaiwhatu (20 credits)

##### [Teacher as Inclusive Pedagogue](#)

Te Hā o te Kaiako Aroā (20 credits)

##### [Mātauranga Maori Teaching and Learning<sup>1</sup>](#)

Te Hā o te Iwi (30 credits)

#### Entry criteria

##### Ngā hiahiatanga tono

To apply for the programme, you must:

hold a recognised Level 7 New Zealand ECE teaching diploma qualification, or

show you have previous experience working with children in an early childhood service.

<sup>1</sup>This course may not be required depending on your previous diploma or competency - see Programme delivery section.



# **MICRO-CREDENTIALS**

Tohu pae whāiti



# What are Micro-credentials?

Tohu pae whāiti, hei kaupapa ako

Short, specialised stand-alone courses designed to help learners explore areas of passion and accelerate careers.

## Recognised

With NZQA approval, each course offers credible recognition and a trusted signal of learner's skills.

## Accessible

The independent nature suits all learners from beginners to experienced professionals.

## Compact

Structured to fast-track learning so learners can build knowledge fast, without long-term commitments.

## Focused

Purpose-built courses for deep-dive learning and skill development across specialised topics.

# What do they offer?

Ko ngā hua o te Tohu pae whāiti

Micro-credentials showcase and strengthen learners' skills, knowledge, and experience so they can confidently meet employer, industry, and community demands.

## Expansion

Each course offers learners ongoing opportunities to expand their knowledge and enhance their real-world impact.

## Real Value

Learners can complete multiple individual courses to build broader expertise, offering both immediate and long-term career value.

## Flexibility

Designed to allow learners to upskill and enhance capabilities without stepping away from employment.

## What's in it for you?

Upon completion, learners:

- Gain up to 40 credits towards their learning journey.
- Receive a recognised digital badge celebrating this achievement.
- Have their results recorded on the official NZQA record of learning.

# Micro-credential: Introduction to infant and toddler education and care in Aotearoa New Zealand

Tohu pae whāiti



#### Dates

February  
July



#### Duration

12–26 weeks  
part-time



#### Study mode

100% self-paced  
online learning



#### Location

Wherever  
you are



#### Outcome

Level 3 (20 credits)  
NZQA micro-credential

## Build on and enhance your knowledge of infant and toddler care and education.

In the micro-credential you will apply key theories and pedagogical approaches in infant and toddler learning and development to enhance teaching and learning environments and support diverse cultural identities and well-being of infants, toddlers, their families and whānau.

This course gives both qualified and unqualified teachers the opportunity to explore the design of learning environments and learn the importance of place in infant and toddler cultural identity, well-being and learning. This micro-credential offers a pathway into and preparation for study in our Level 5 and Level 7 programmes.

### Programme delivery

#### Te ara tuku

#### Online

- **Duration:** 12–26 weeks
- **Weekly commitment:** 8–16 hours self-directed learning per week including assessment work and putting your learning into practice.
- **Study mode:** 100% online learning; self-paced with a one-to-one space to communicate with your lecturers.

### Assessments

Throughout this micro-credential, you will apply your learning through online topic assessment tasks. Each module will have a summative assessment - a final test that shows what you have learned.

### Courses

#### Kaupapa

- Theories of infant and toddler learning and development
- Māori perspectives of infants and toddler care and education
- Culturally responsive infant and toddler care and education (Pasifika and international perspectives)
- Infant and toddler neuroscience, mental health and emotional wellbeing
- Infant and toddler pedagogy: Multiple approaches to care and education
- The role of the teacher in infant and toddler learning

# Micro-credential: He Pātaka Reo

## Tohu pae whāiti



**Dates**  
February  
July



**Duration**  
18–24 weeks  
part-time



**Study mode**  
100% self-paced  
online learning



**Location**  
Wherever  
you are



**Outcome**  
Level 5 (12 credits)  
NZQA micro-credential

## Develop and increase your understanding of Te Reo Māori tikanga in education workplaces.

This micro-credential will inspire you to aspire for improved te reo Māori proficiency, acquisition and use across all education sectors. It provides opportunities for Te Reo Māori to be normalised, and Māori identity and culture, to be shared and embraced.

This entry level course gives teachers, non-teachers, and managers the opportunity to develop and increase their understanding of Te Reo Māori language, tikanga and concepts in their workplaces including schools and ECE services.

### Programme delivery

Te ara tuku

#### Online

- **Duration:** 18–24 weeks
- **Weekly commitment:** 5 hours self-directed learning per week including assessment work and applying your learning into practice.
- **Study mode:** 100% online learning; self paced.

### Assessments

Throughout this micro-credential you will apply your learning through 18 online assessments and 3 reflective feedback modules.

### Courses

#### Kaupapa

- Introduction and acknowledgment | Mihimihi
- The Māori alphabet
- Greetings and Farewells
- Praising others
- Personal Pronouns
- Locations
- Introduction | Mihimihi
- The weather
- What's the time
- Seasons, Months and Days of the week
- Matariki
- Sustainability
- Introduction (Building on mihimihi Stage 2)
- Genealogy
- Te Marae
- Healthy foods
- Physical Wellbeing
- Emotions

# Our locations

## Ngā wāhi whakaako

We are a field-based provider with  
11 Regional Education Centres | takiwa ako  
across New Zealand.



### National Office Te Tari Matua

#### Physical address

Level 2  
The Thorndon Centre  
191 Thorndon Quay  
Wellington 6011

#### Freephone

0800 244 532  
Tel 04 473 4672

#### Website

[ecnz.ac.nz](http://ecnz.ac.nz)

#### Postal address

PO Box 12725  
Thorndon  
Wellington 6144

### Whangārei

2 Carlton Crescent  
Kamo  
Whangārei 0112  
Tel 09 438 1960

### Rotorua

1157 Pukuatua Street  
Rotorua 3010  
Tel 07 346 2408

### Palmerston North Te Papaioea

23 Mihaere Drive  
Palmerston North 4414  
Tel 06 355 0108

### Christchurch Ōtautahi

106 Wrights Road  
Addington  
Christchurch 8024  
Tel 03 342 1362

### Manukau

Manukau Westfield  
Shopping Centre  
Level 1, Westfield Tower  
Leyton Way  
Auckland 2104  
Tel 09 263 9755

### Gisborne Tūrangānui-a-kiwa

Unit 3, 152 Ormond Road  
Mangapapa  
Gisborne 4010  
Tel 06 868 4775

### Wellington Te Whanganui-a-Tara

Ground Floor  
191A Thorndon Quay  
Thorndon  
Wellington 6011  
Tel 04 460 8921

### Dunedin Ōtepoti

Level 2, Bracken Court  
480 Moray Place  
Dunedin 9016  
Tel 03 477 8511

### Hamilton Kirikiriroa

5 King Street  
Frankton  
Hamilton 3204  
Tel 07 850 4971

### Hastings Heretaunga

120 Market Street  
North Hastings 4122  
Tel 06 878 2307

### Nelson Whakatū

197 Bridge Street  
Nelson 7040  
Tel 03 548 0511

To enrol with us, talk to our Student Services team.  
Call 0800 244 532 or email [akomai@ecnz.ac.nz](mailto:akomai@ecnz.ac.nz)