

# Concinnity™

DESIGN GUIDE



Make your space work®

**HON**

# Style and selection in perfect *harmony*

Whether it's a high-intensity Monday or a laid-back Friday, no two days – or people – in a busy office are alike. Concinnity delivers a cohesive mix of desks and storage that blends substance with style. Now with height-adjustable options, your private office can rise to meet every part of your day.





# Elevate your space to new *heights*



## Where Leadership Meets Movement

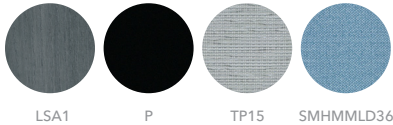
Sit tight. Stand tall. Whatever curveball your schedule decides to throw, Concinnity offers a choice—and having a choice matters when you're meeting goals and making big decisions. Concinnity brings new depth to the private office with two thoughtfully designed additions: the Executive Height-Adjustable Desk, and the Height-Adjustable Bridge. Together, they enhance the flow, function, and visual rhythm of the workspace—balancing purposeful design with everyday performance.

SHOWN WITH  
**COFI™**



144"W x 120"D

**Setting 1**



**Concinnity Models**

Executive HAT Worksurface  
**HNLHATRC3684-FK**

Executive HAT Return Worksurface  
**HNLHATRC2454VL-FK**

Executive HAT L Shape Chassis  
**HNLHATLS8484R-3X**

Wardrobe/Bookcase  
**HNL243679WRBL**

Rectangle Worksurface  
**HNLRC2496**

Shaped End Panel  
**HNLLEP2428R**

HAT Low Credenza  
**HNL247221LH**

Lateral File Pedestal  
**HNL233028PLF**

Modesty Pedestal Back Panel  
**HNLMP3028**

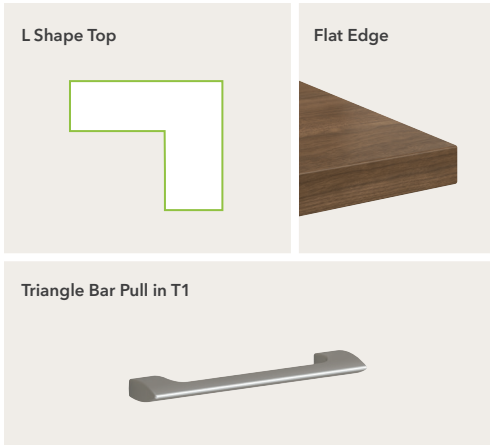
Bookcase Hutch  
**HNL4930BHLD**

Stack-on Storage  
**HNL4966SD**

Tackboard  
**H90055**

Shroud  
**HNL30SHR**

**Features**



SHOWN WITH  
**IGNITION® 2.0**



144"W x 72"D

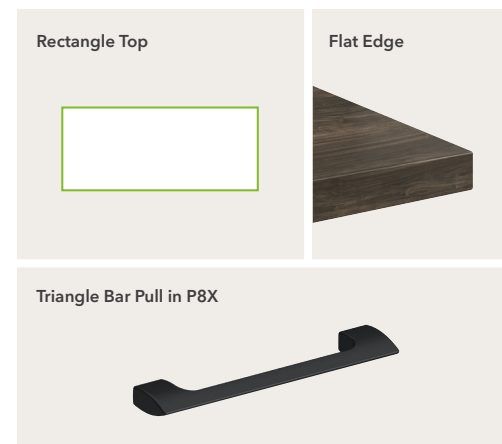


## Setting 2

### Concinnity Models

- Rectangle Worksurface  
**HNLRC3072**
- 2-Leg Height-Adjustable Base  
**HNLAB2SIL**
- Shroud for Height-Adjustable Base  
**HNL30SHR**
- HAT Low Credenza, Left Box/File  
**HNL247221LH**
- Height-Adjustable Wall Bridge  
**HNLHATRL2472**
- Wall Mount Open Hutch  
**HNL1572LO**
- External Support Channel  
**HLSLZ5SC72**

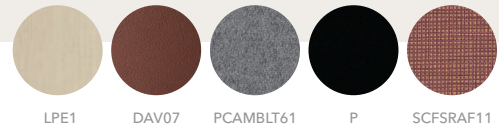
### Features



SHOWN WITH  
**MAV™ & COFI™**



144"W x 72"D



## Setting 3

### Concinnity Models

Corner Cove Top, Right  
**HNL723660RCH**

3-Leg Height-Adjustable Base  
**HNLAB3SIL**

Shroud for Height-Adjustable Base  
**HNL36SHR**

HAT Low Credenza, Left Box/File  
**HNL247221LH**

HAT Low Credenza, No Cutout  
**HNL247221LH**

Wall Mount Storage  
**HNL1536LD**

### Workwall Models

Fabric Tile  
**HWWT2236F**

Fabric Tile  
**HWWT3736F**

Floating Shelf  
**HWWASHELF36**

### Features

Corner Cove Top



Flat Edge



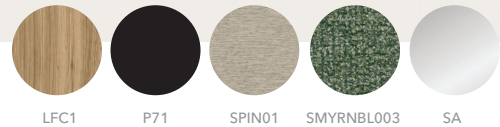
Canopy Pull in P



SHOWN WITH  
**COFI™**



144"W x 94"D



## Setting 4

### Concinnity Models

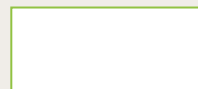
Rectangle Worksurface  
**HNLRC3072**  
Exec HAT Desk Worksurface  
**HNLHATRC3684-FK**  
Exec HAT Double Pedestal Desk  
**HNLHATDP3084-32**  
Wall Mount Open Hutch, Laminate Doors  
**HNL1572LO**  
Bookcase Hutch  
**HNL4936BHLD**  
2-Drawer Lateral File  
**HNL2436LD2**  
External Support Channel  
**HLSLZ5SC78**  
Task Light  
**HLED31AS**

### Workwall Models

Fabric Tile  
**HWWT3736F**

### Features

Rectangle Top



Knife Edge



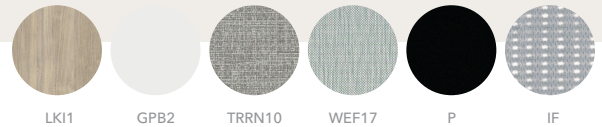
Loop Pull in SA





SHOWN WITH  
**IGNITION® 2.0**

138"W x 72"D



## Setting 5

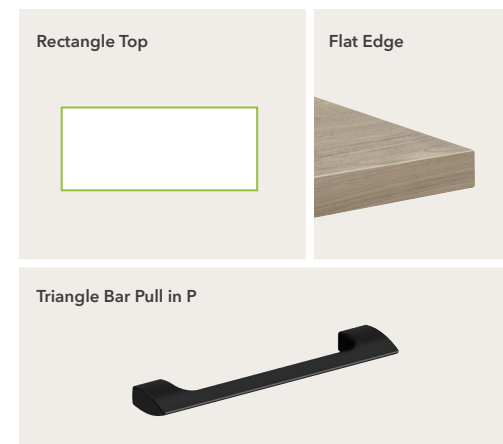
### Concinnity Models

- Rectangle Worksurface  
**HNLRC3072**
- 2-Leg Height-Adjustable Base  
**HNLAB2SIL**
- Shroud for Height-Adjustable Base  
**HNL30SHR**
- HAT Low Credenza, Left Box/File  
**HNL246021LH**
- HAT Low Credenza, No Cutout  
**HNL246021LH**
- Half-Height Modesty Panel  
**HNL4014LM**
- Wardrobe/Storage Cabinet  
**HNL241865WLL**
- Wall Mount Open Hutch  
**HNL1560LO**
- Wall Mount Storage, Laminate Doors  
**HNL1530LD**

### Workwall Models

- Fabric Tile  
**HWWT3060F**
- Glass Markerboard Tile  
**HWWT3030M**

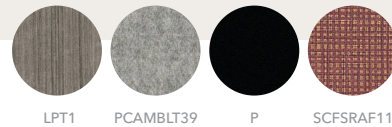
### Features



SHOWN WITH  
IGNITION® 2.0



144"W x 72"D



## Setting 6

### Concinnity Models

Corner Cove Worksurface, Right  
**HNL723660RCH**

3-Leg Height-Adjustable Base  
**HNLAB3SIL**

Shroud for Height-Adjustable Base  
**HNL36SHR**

HAT Low Credenza, Left Box/File  
**HNL247221LH**

HAT Low Credenza, No Cutout  
**HNL247221LH**

### Workwall Models

Fabric Tile  
**HWWT4536F**

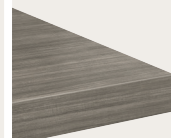
Floating Shelf  
**HWWASHELF36**

### Features

Corner Cove Top



Flat Edge



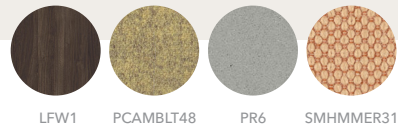
Triangle Bar Pull in P





SHOWN WITH  
**COFI™**

132"W x 96"D



## Setting 7

### Concinnity Models

Rectangle Worksurface  
**HNLRC3072**

Return Top  
**HNLRR4023**

3-Leg Height-Adjustable Base  
**HNLAB35IL**

Shroud for Height-Adjustable Base  
**HNL30SHR**

Half-Height Modesty Panel  
**HNL4014LM**

L-Shaped End Panel, Right  
**HNLLEP2428R**

HAT Low Credenza, Left Box/File  
**HNL247221LH**

Wardrobe/Bookcase  
**HNL243679WRBL**

Lateral File Pedestal  
**HNL233028PLF**

Bookcase Hutch  
**HNL4930BHLD**

Rectangle Worksurface  
**HNLRC2496**

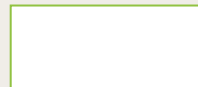
Modesty/Pedestal Back Panel  
**HNLMP3028**

Stack-on Storage, Sliding Door  
**HNL4966SD**

Tackboard  
**H90055**

### Features

Rectangle Top



Flat Edge



Triangle Bar Pull in PR6





# Create a space that's totally *you*

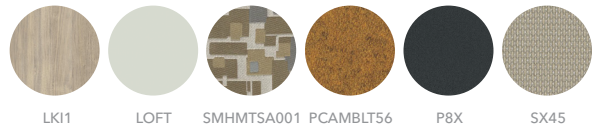
## Imagine the Possibilities

Efficient productivity and easy comfort demand exceptional functionality, but it's also enhanced by thoughtful attention to detail and comprehensive design. Concinnity offers keen aesthetic appeal, including unique top shape selections that encourage meaningful collaboration and sleek post leg options available in an ample array of paint colors to suit a variety of spaces. With sophisticated style, remarkable agility, and everyday practicality, it's never been easier to make your private office a reflection of who you are and how you do business.

SHOWN WITH  
**IGNITION® 2.0**  
**& ASTIR**



144"W x 78"D



## Setting 8

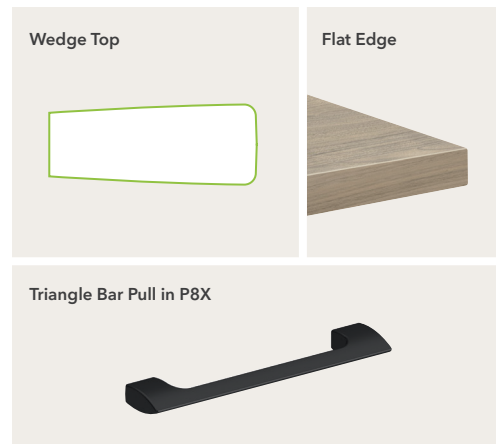
### Concinnity Models

- Wedge Top  
**HNL3078WT**
- Post Leg, 2-Pack  
**HMBPOST2**
- Credenza Stanchion  
**HNL28XS**
- Low Credenza, 2 Box/ 2 File  
**HNL207221D4**
- Low Credenza, Box/File  
**HNL203621D2**
- External Support Channel  
**HLSLZ5SC84**

### Workwall Models

- Fabric Tile  
**HWWT3048F**
- Media Tile  
**HWWT3048V**
- Small Tray  
**HWWAST**
- Tool Rail  
**HWWARAIL48**

### Features



SHOWN WITH  
IGNITION® 2.0



114"W x 84"D



## Setting 9

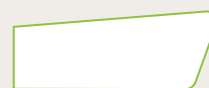
### Concinnity Models

Blade Worksurface  
**HNL3060LBT**  
Post Leg, 2-Pack  
**HMBPOST2**  
Storage/File Cabinet  
**HNL241865FLL**  
Bookcase Hutch  
**HNL3630BHxD**  
Rectangle Worksurface  
**HNLRC2496**  
Support Pedestal, Box/Box/File  
**HNL231628PBBF**

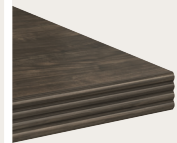
Lateral File Support Pedestal  
**HNL233028PLF**  
Modesty/Back Panel  
**HNLMP9628**  
Wall Mounted Storage, Sliding Door  
**HNL1566SD**  
External Support Channel  
**HLSLZ55C66**  
Tackboard for 66"W  
**H90055**

### Features

Blade Top



Beaded Edge



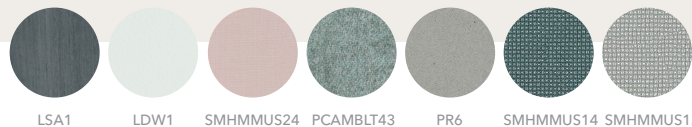
Triangle Bar Pull in T4





SHOWN WITH  
**IGNITION® 2.0**  
**& ASTIR™**

114"W x 72"D



## Setting 10

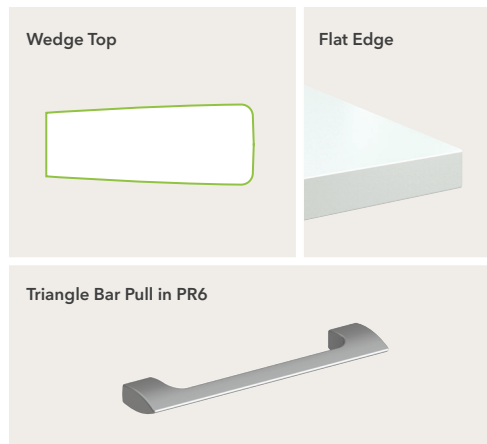
### Concinnity Models

- Wedge Worksurface  
**HNL3672WT**
- Post Leg, 2-Pack  
**HMBPOST2**
- Credenza Stanchion  
**HNL28XS**
- Low Credenza, Right Box/File  
**HNL206021RD2**
- Low Credenza, Box/File  
**HNL203021D2**
- Storage Tower  
**HNL242465TLL**
- External Support Channel  
**HLSLZ55C78**

### Workwall Models

- Fabric Tile  
**HWWT4524F**
- Laminate Media Tile  
**HWWT4542V**

### Features



SHOWN WITH  
**MAV™**



120"W x 72"D



## Setting 11

### Concinnity Models

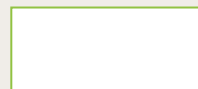
- Rectangle Worksurface  
**HNLRC3672**
- Post Leg, 2-Pack  
**HMBPOST2**
- Credenza Stanchion  
**HNL28XS**
- Low Credenza, 2 Box/ 2 File  
**HNL206021D4**
- Low Credenza, Box/File  
**HNL203021D2**
- Credenza Cushion  
**HLSL2030CH2**
- External Support Channel  
**HLSLZ55C78**

### Workwall Models

- Laminate Tile  
**HWWT4530L**
- Floating Shelf  
**HWWASHELF30**

### Features

Rectangle Top



Flat Edge



Canopy Pull in P





90"W x 100"D



## Setting 12

### Concinnity Models

Blade Top, Right  
**HNL3066RBT**

Return Top  
**HNLRR4623**

Post Leg, 2-Pack  
**HMBPOST2**

Storage/File Cabinet  
**HNL241865SFLL**

Credenza, Left Single Pedestal  
**HNL2472LP**

Stack-on Storage, Sliding Door  
**HNL3672SD**

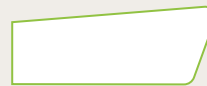
Flat Bracket  
**HHN831124**

External Support Channel  
**HLSLZ5SC72**

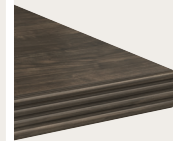
Tackboard  
**H90056**

### Features

Blade Top



Beaded Edge



Triangle Bar Pull in PJW





150"W x 96"D



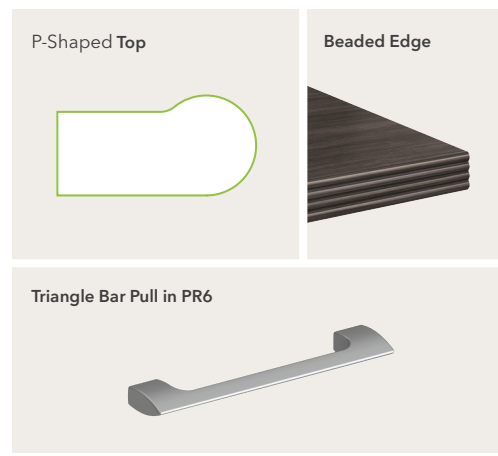
## Setting 13

### Concinnity Models

- P-Shaped Worksurface  
**HNL3672RPT**
- Support Column  
**HPC191X**
- L-Shaped End Panel  
**HNLLEP2428R**
- Rectangle Worksurface  
**HNLRC2496**
- Mobile Pedestal  
**HNL2116MBBF**
- Storage Tower  
**HNL242479TLL**
- Support Pedestal, Box/Box/File  
**HNL231628PBBF**
- Bookcase with Adjustable Shelves  
**HNL1530BK6**

- Full Back Panel  
**HNLPB1628**
- External Support Channel  
**HLSLZ55C78**
- Wall Mounted Storage, Frosted Doors with Silver Frame  
**HNL2948FD**
- Tackboard  
**H90053**

### Features





SHOWN WITH  
**IGNITION® 2.0**

132"W x 78"D



## Setting 14

### Concinnity Models

- Wedge Top  
**HNL3678WT**
- Post Leg, 2-Pack  
**HMBPOST2**
- Credenza Stanchion  
**HNL28XS**
- Low Credenza, Right Box/File  
**HNL207221RD2**
- Low Credenza, Box/File  
**HNL203621D2**
- Storage Tower  
**HNL242479TLR**
- Wall Mounted Storage,  
Laminate Doors  
**HNL2936LD**
- External Support Channel  
**HLSLZ55C84**

### Workwall Models

- Glass Markerboard Tile  
**HWWT3036M**
- Metal Tile  
**HWWT3036P**
- Tool Rail  
**HWWARAIL36**
- Small Bin  
**HWWASB**

### Features





**Make your space work<sup>®</sup>**

The HON Company  
Muscatine, IA 52761  
800.833.3964 | Check out hon.com

© 2025 The HON Company. Form No. H5995 (11/25)  
To view the registered and unregistered trademarks  
owned and used by The HON Company, visit  
[hon.com/protected-marks](https://hon.com/protected-marks). Models, upholstery  
and finishes are subject to change without notice.



SCAN TO  
CHECK OUT  
CONCINNITY  
ON HON.COM

For more information, visit [hon.com/concinnity](https://hon.com/concinnity)