

EDU-102

Classroom Footprint 35' x 30'

Layout A Lecture Learning

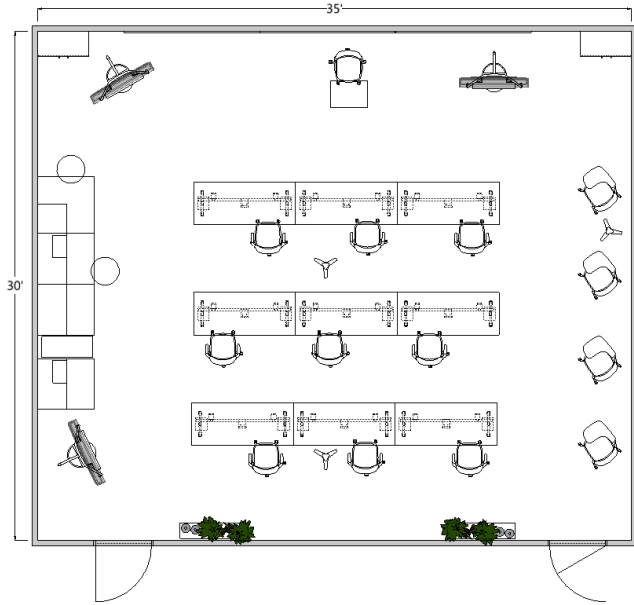
Product Line	Aware Essentials Further	Inspire Park Rise
--------------	--------------------------------	-------------------------



[View EDU-102](#) →

DISCLAIMER:

DRAWING AND SPECIFICATIONS NOT FOR ORDER ENTRY. IDEA STARTERS TO BE USED FOR BUDGETARY AND INSPIRATIONAL PURPOSES ONLY. PLEASE CONTACT A SALES REPRESENTATIVE OR AUTHORIZED DEALER FOR PRICING.



EDU-102

Classroom Footprint 35' x 30'

Layout B HyFlex Learning

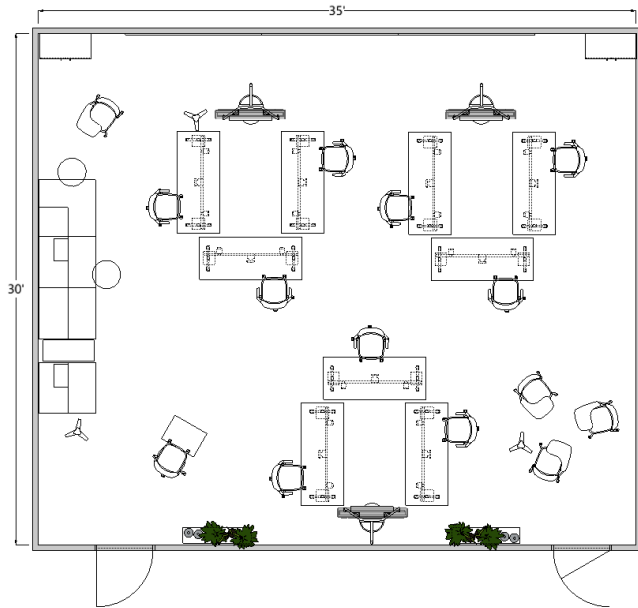
Product Line	Aware	Inspire
	Essentials	Park
	Further	Rise



View EDU-102 →

DISCLAIMER:

DRAWING AND SPECIFICATIONS NOT FOR ORDER ENTRY. IDEA STARTERS TO BE USED FOR BUDGETARY AND INSPIRATIONAL PURPOSES ONLY. PLEASE CONTACT A SALES REPRESENTATIVE OR AUTHORIZED DEALER FOR PRICING.



EDU-102

Classroom Footprint 35' x 30'

Layout C HyFlex Group Learning

Product Line	Aware Essentials Further	Inspire Park Rise
--------------	--------------------------------	-------------------------



[View EDU-102](#)

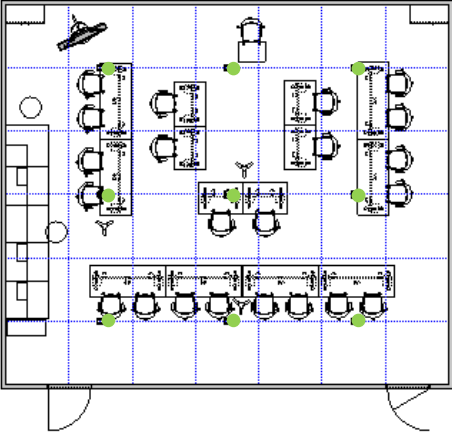


DISCLAIMER:

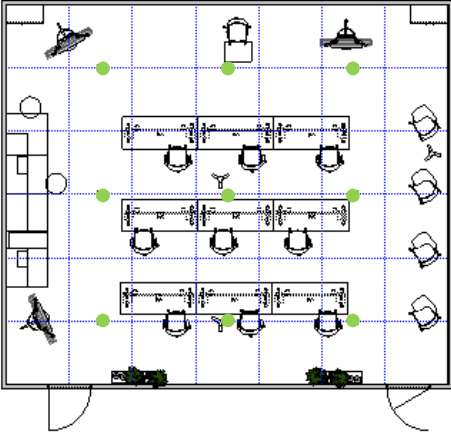
DRAWING AND SPECIFICATIONS NOT FOR ORDER ENTRY. IDEA STARTERS TO BE USED FOR BUDGETARY AND INSPIRATIONAL PURPOSES ONLY. PLEASE CONTACT A SALES REPRESENTATIVE OR AUTHORIZED DEALER FOR PRICING.

EDU-102

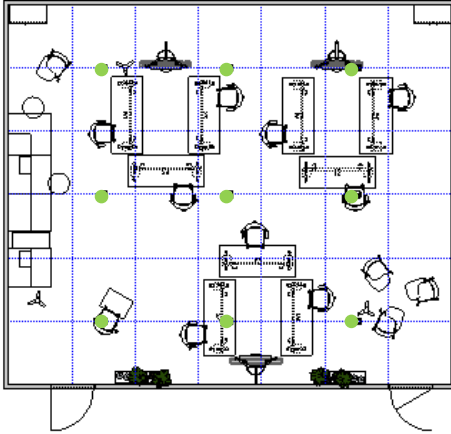
Flexible Power Grid



Layout A



Layout B



Layout C

● Floor Core Location

DISCLAIMER:

DRAWING AND SPECIFICATIONS NOT FOR ORDER ENTRY. IDEA STARTERS TO BE USED FOR BUDGETARY AND INSPIRATIONAL PURPOSES ONLY. PLEASE CONTACT A SALES REPRESENTATIVE OR AUTHORIZED DEALER FOR PRICING.