

# EDU-103

Classroom Footprint 35' x 30'

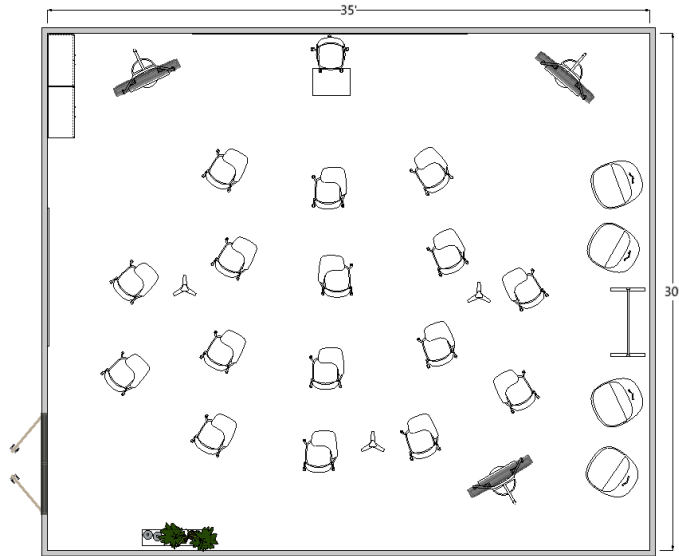
Layout A Lecture Learning

|              |            |         |
|--------------|------------|---------|
| Product Line | Altitude   | Inspire |
|              | Aware      | Park    |
|              | Essentials | Rock    |



[View EDU-103](#) →

**DISCLAIMER:**  
DRAWING AND SPECIFICATIONS NOT FOR ORDER ENTRY. IDEA STARTERS TO BE USED FOR BUDGETARY AND INSPIRATIONAL PURPOSES ONLY. PLEASE CONTACT A SALES REPRESENTATIVE OR AUTHORIZED DEALER FOR PRICING.



## EDU-103

Classroom Footprint 35' x 30'

Layout B HyFlex Learning

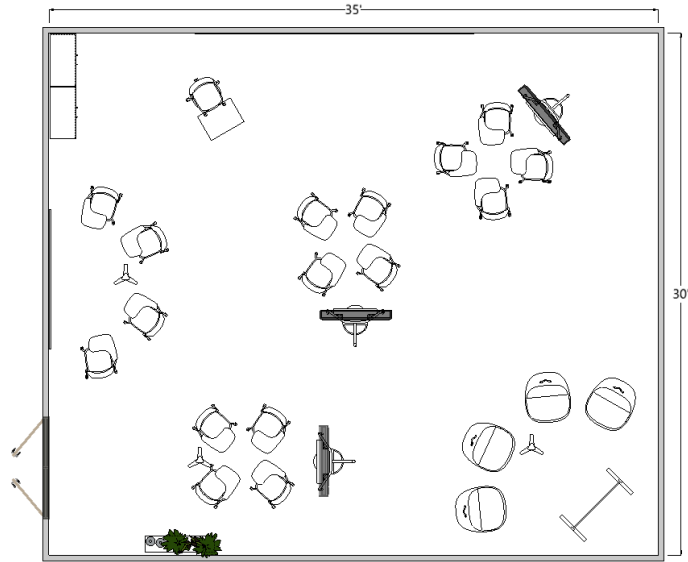
|              |                                |              |
|--------------|--------------------------------|--------------|
| Product Line | Aware<br>Essentials<br>Inspire | Park<br>Rock |
|--------------|--------------------------------|--------------|



View EDU-103 →

**DISCLAIMER:**

DRAWING AND SPECIFICATIONS NOT FOR ORDER ENTRY. IDEA STARTERS TO BE USED FOR BUDGETARY AND INSPIRATIONAL PURPOSES ONLY. PLEASE CONTACT A SALES REPRESENTATIVE OR AUTHORIZED DEALER FOR PRICING.



## EDU-103

Classroom Footprint 35' x 30'

Layout B HyFlex Group Learning

|              |                                |              |
|--------------|--------------------------------|--------------|
| Product Line | Aware<br>Essentials<br>Inspire | Park<br>Rock |
|--------------|--------------------------------|--------------|



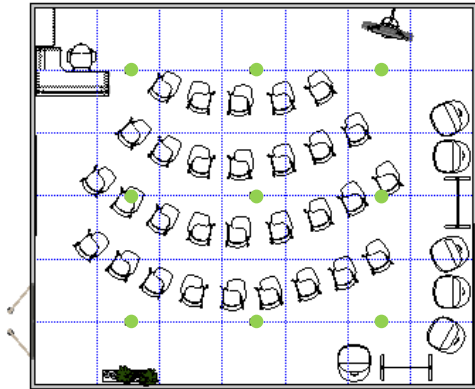
View EDU-103 →

**DISCLAIMER:**

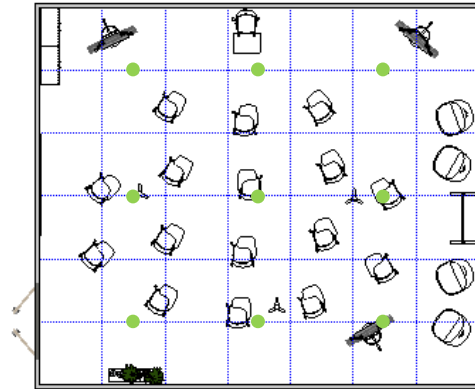
DRAWING AND SPECIFICATIONS NOT FOR ORDER ENTRY. IDEA STARTERS TO BE USED FOR BUDGETARY AND INSPIRATIONAL PURPOSES ONLY. PLEASE CONTACT A SALES REPRESENTATIVE OR AUTHORIZED DEALER FOR PRICING.

# EDU-103

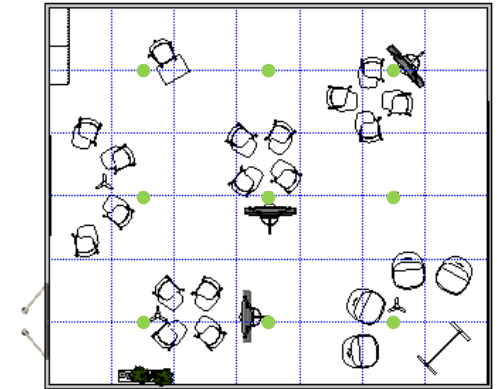
## Flexible Power Grid



Layout A



Layout B



Layout C

● Floor Core Location

**DISCLAIMER:**

DRAWING AND SPECIFICATIONS NOT FOR ORDER ENTRY. IDEA STARTERS TO BE USED FOR BUDGETARY AND INSPIRATIONAL PURPOSES ONLY. PLEASE CONTACT A SALES REPRESENTATIVE OR AUTHORIZED DEALER FOR PRICING.