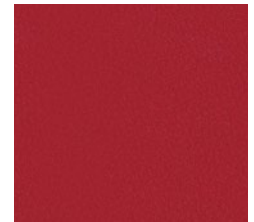




PRKR05 Cumulus

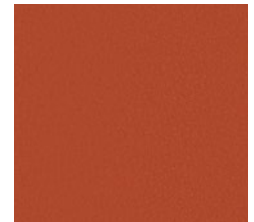
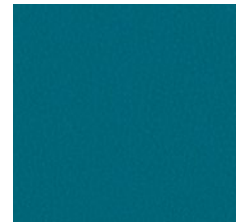
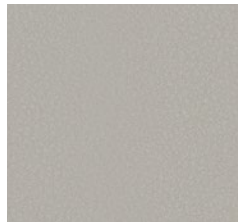


PRKR20 Mica

PRKR16 Kiln

PRKR21 Mink

PRKR13 Grenadine

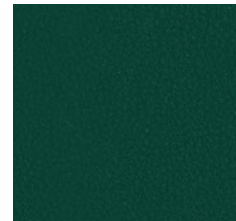
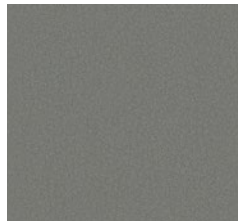


PRKR18 Magnesium

PRKR01 Aloe

PRKR06 Cyan

PRKR24 Paprika

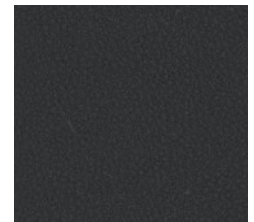
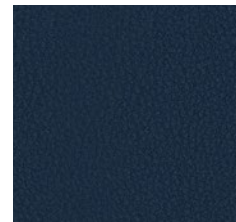
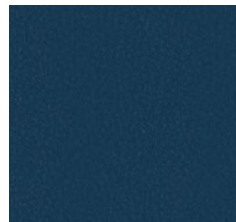
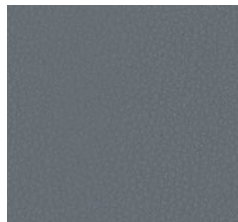


PRKR10 Fossil

PRKR12 Grass

PRKR25 Pine

PRKR30 Rioja

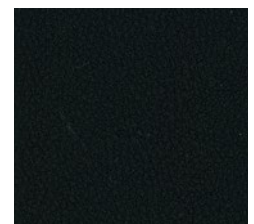
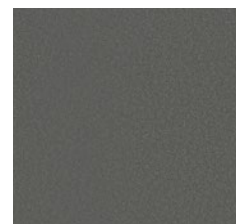


PRKR14 Griffin

PRKR28 Rapids

PRKR22 Nightfall

PRKR11 Graphite



PRKR19 Magnet

PRKR07 Domino

Parker

| | |
|-------------------------|---|
| Application | Chair |
| Content | 100% Polyurethane |
| Width | 54" |
| Weight | 20 ounces per inear yard |
| Abrasion | 100,000 double rubs (W) |
| Flame Resistance | NFPA 260 (UFAC Class 1), California TB 117-2013 compliant |
| Maintenance | <ul style="list-style-type: none">• Regular cleaning and maintenance – Clean the soiled area with mild soap and water, then rinse with fresh water and whip dry with a clean cloth.• Food stains/oils – Wipe affected area with a soft cloth or bristle brush using a non-abrasive cleaner, for example Formula 409 or Fantastik. Rinse with fresh water and wipe dry.• Healthcare – Clean the soiled area with a 20% solution of household bleach and water. It is important to rinse the cleaned area with fresh water after applying the bleach solution.• Disinfection – To disinfect, apply a 20% solution of household bleach and water or a 70% solution of isopropyl alcohol and water. After the appropriate contact time, wipe surface dry and gently wipe or rinse with fresh water.• Difficult stains – Clean the soiled area with 50% solution of isopropyl alcohol (rubbing alcohol) and water. It is important to rinse the cleaned area with fresh water after applying the alcohol solution.• Ink marks/graffiti – Rub the affected area with a dry soft cloth with firm pressure. If some stain is still present, spray it with a 70% dilution of isopropyl alcohol and water and wipe. Rinse with fresh water and wipe dry. Note: Removal of ink, particularly permanent market, may vary depending on the period of time that the ink sets in. While this material offers excellent protection, full removal is not guaranteed. |
| Manufacturer | HON |
| Features | <ul style="list-style-type: none">• Proposition 65 Compliant• No added flame retardants – AB2998 compliant• No added antimicrobials• Healthier Hospitals Compliant• Ink and denim resistant |

ACT Registered Certification 