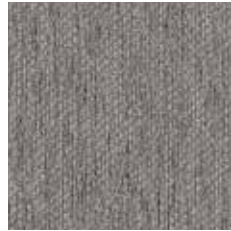


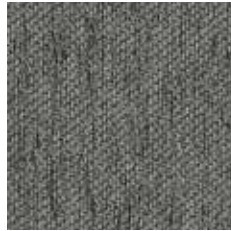
**SPIN02** Alabaster



**SPIN01** Oat



**SPIN05** Willow



**SPIN04** Cobblestone



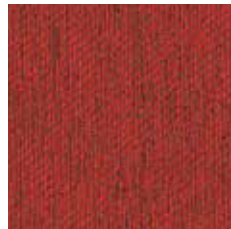
**SPIN13** Heron



**SPIN08** Tropic



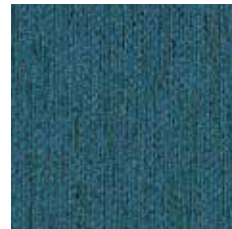
**SPIN06** Ember



**SPIN07** Flame



**SPIN14** Rhubarb



**SPIN12** Ocean



**SPIN11** Pool



**SPIN15** Plum



**SPIN03** Cavern



**SPIN10** Raven

# Spin

<b>Application</b>	Workstations
<b>Content</b>	54% Polyester, 30% Pre-Consumer Recycled Polyester, 16% Post-Consumer Recycled Polyester
<b>Width</b>	66"
<b>Repeat</b>	.063" V x .063" H
<b>Weight</b>	13.88 ounces per linear yard
<b>Backing</b>	Acrylic
<b>Flame Resistance</b>	ASTM E-84 (Tunnel Test); Class A or 1
<b>Maintenance</b>	WS: Clean with upholstery shampoo or mild dry cleaning solvent
<b>Sustainability</b>	Recycled Content
<b>Manufacturer</b>	HON

ACT Registered Certification 



The HON Company  
200 Oak Street  
Muscatine, IA 52761  
800.833.3964  
[hon.com](http://hon.com)