

Allsteel®



Evo™

# One Chair, Many Spaces

People are moving around the workspace to get work done, and the conference room or shared bench is the home away from home. The Evo collection is adaptable and interchangeable across multiple spaces to provide consistent comfort while maintaining a cohesive design.



Side Chair



Conference Chair



Task Chair



Task Stool

## Our Design, Your Comfort

Evo chairs feature weight-activated recline so there's no additional tension adjustment. Intuitive controls, along with specially sculpted and formulated seat foam, create a comfortable sitting experience for wherever and however people work.



Open arms allow for multiple sitting postures and remain lateral when reclining for maximum support.



Accent stitching, available in nine colors, offers a way to make a design statement on task and conference models.



Contoured frame provides upright back support. Optional user-adjustable lumbar can be added at any time.



Integrated, up-front controls are easy to access and use and contribute to an overall clean aesthetic.



# Evo Statement of Line



High-Back  
Task Chair



High-Back  
Task Stool



Mid-Back  
Conference  
Chair



Side Chair

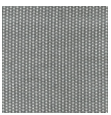
## Options for task and conference models

All-adjustable arms, height-adjustable arms, polished aluminum fixed arms, or armless  
Mesh (task models only) or upholstered (conference chair only) back

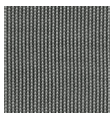
## Options for side chair

Mesh back  
Casters or glides

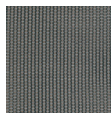
## Task & Side Mesh Back Colors



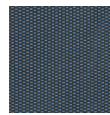
Lustre



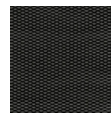
Mist



Clay



Navy



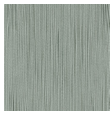
Dusk

Conference chair features an upholstered back. A wide selection of seating upholstery is available online at [allsteeloffice.com](http://allsteeloffice.com).

## Accent Seat/Back Stitch Colors



Natural



Light Gray



Yellow



Orange



Light Red



Tan



Blue



Medium  
Green



Black

Accent stitching is available on task models seat and conference chair seat and back. Accent stitching is not available on side chair. Coordinating stitching also available.

## Task & Conference Base/Frame Finishes



Salt



Polished  
Aluminum



Titanium



Flint



Black

## Side Frame Colors



Salt



Silver



Titanium



Flint



Solar Black



Black



Go to [allsteeloffice.com/design-resources/idea-starters](http://allsteeloffice.com/design-resources/idea-starters) to customize this product for your space.

Although the colors reproduced in this brochure were matched with care, they may vary from the actual finish. When color is critical, please obtain a physical sample.

Allsteel®

Allsteel Inc.  
Muscatine, Iowa 52761

[allsteeloffice.com](http://allsteeloffice.com)

Form # A8538.B1 (07/21)

©2021 Allsteel Inc.  
Allsteel is a registered trademark and Evo is a trademark. Indoor Advantage is a trademark of SCS Global Services. level is a registered trademark of BIFMA International.

