

HON

Make your space work®



Coordinate™

Desks

The power to move with you.

You've Gotta Stand for Something

It's time to adjust to the ups and downs of life in the office. Embrace the new workday and a healthier work style with Coordinate height-adjustable tables. With two-leg and three-leg options—plus a variety of controls and worksurface sizes to choose from—flexibility and well-being is easily within reach. After all, why take things sitting down?



SCAN TO
CHECK OUT
COORDINATE ON
HON.COM



Shown with Ignition® seating and 10500-Series™ desk.



Shown with Fuse™ hanging pedestals and Gravitation™ power beam.



Give any Workspace a Raise

Talk about employee perks. Now you can transform any worksurface into sit-and-stand with our 2- or 3-stage bases. The benefit? Improved posture, enhanced focus, and increased productivity. And with Coordinate's ability to support a variety of settings—think open collaborative areas, private offices, and remote home workspaces—a change of view has never been more welcome.

Bending To Your Will

Sit down. Stand up. Stretch out. With built-in flexibility that rivals a yoga pose, Coordinate rectangle or corner cove surfaces come in an array of sizes suited for any space or any task. And with optional privacy screens, wire management, and multiple control options, you've got a command central that does it all.



Shown with Accelerate™ workstation and Nucleus® chair.



EXPAND YOUR HORIZONS
Sprawl out or cozy up, it's your call. Coordinate bases work with 23" to 30"D and 24" to 96"W worksurfaces. Worksurfaces larger than 58"W require external stiffener.

Change of Pace

Harness the power of choice with a 2-leg base with a rectangle worksurface or a 3-leg base with a corner cove worksurface. And don't forget to add a dash of personality—with vibrant color and texture, PET screens, and Universal Screens amp up your aesthetic and encourage privacy when you need it the most.



Base Configurations



All weight capacities include weight of worksurface.



2 Leg "T" foot
2 Stage (250lb Capacity)
3 Stage (250lb Capacity)
3 Stage Max (350lb Capacity)



3 Leg "T" foot
2 Stage (375lb Capacity)
3 Stage (375lb Capacity)
3 Stage Max (500lb Capacity)



2 Leg "C" foot
2 Stage (250lb Capacity)
3 Stage (250lb Capacity)



3 Leg "C" foot
2 Stage (375lb Capacity)
3 Stage (375lb Capacity)

Controls



Basic



Memory



Paddle



Wireless*

Base Finishes



Designer White Loft Silver Charcoal Black

Laminate Top Finishes**



Florence Walnut Bourbon Cherry Harvest Natural Recon Kingswood Walnut

* Controlled with the AiDesk smartphone App.

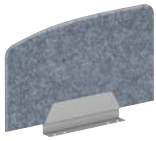
**Choose from several more laminates at hon.com/fabrics-and-finishes/laminates



Options

Privacy Screens

With durable PR6 silver brackets and tackable material, a PET Privacy Screen offers instant focus and discretion without sacrificing connection in shared spaces. For more privacy options, Universal screens are also fully compatible with Coordinate tables.



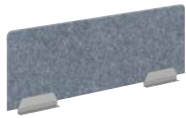
Side/Middle



Side/End



Above "U"



Above Desktop



Above/Below



Above/Below "L"



Pacman

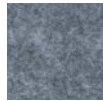
Privacy Panel Colors



Green



Dark Blue



Medium Gray



Dark Gray

Power



Power Module
Get connected easily, right from your worksurface



Under Worksurface Power Module
Four side access outlets make powering up simple and convenient