

# HBF TEXTILES

RAW MATERIALS COLLECTION  
BY ELODIE BLANCHARD







# Raw, Simple + Spontaneous Raw Materials Collection



# Elodie Blanchard

Elodie Blanchard began her career in the fashion industry before moving to Paris to study sculpture at the École des Beaux-Arts and fashion at the Duperré School of Design and Fashion. In 1999, she won the young designer prize at the International Fashion Arts Festival of Hyeres, which led to her eponymous clothing line at the famed French La Redoute store. After studying at CalArts in Los Angeles, her interests expanded to performance projects, including collaborations with musicians. Elodie Blanchard Studio specializes in textile design and fabrication, from large-scale custom draperies, trend forecasting, photography styling and site-specific installations to ready made surfaces, soft furniture and home accessories.



# Raw Materials Collection

“I want to express the energy of the process, show the hand of the maker and emphasize the beauty and simplicity of the yarn.”

– Elodie Blanchard '17

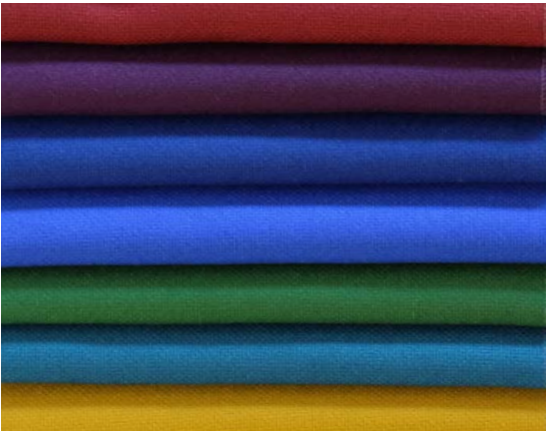








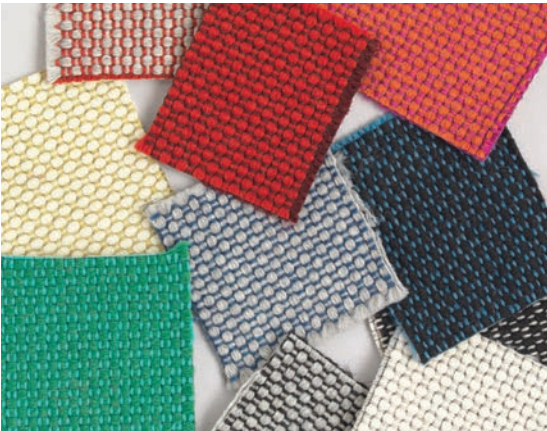
**Raw Materials Collection**



**Italian Wool 987**



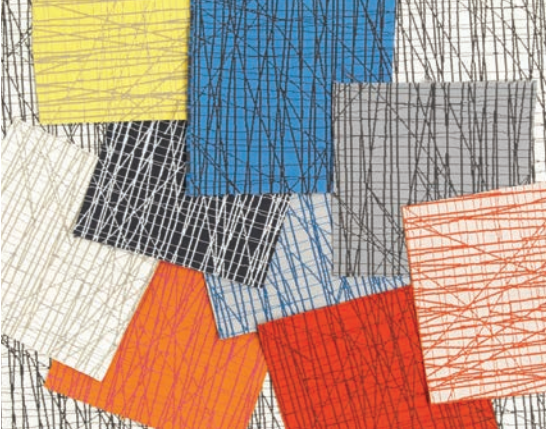
**Outdoor Check 981**



**Double Stitch 986**



**Sideways 985**



**Scribble XS 982**



**Scribble XL 983**







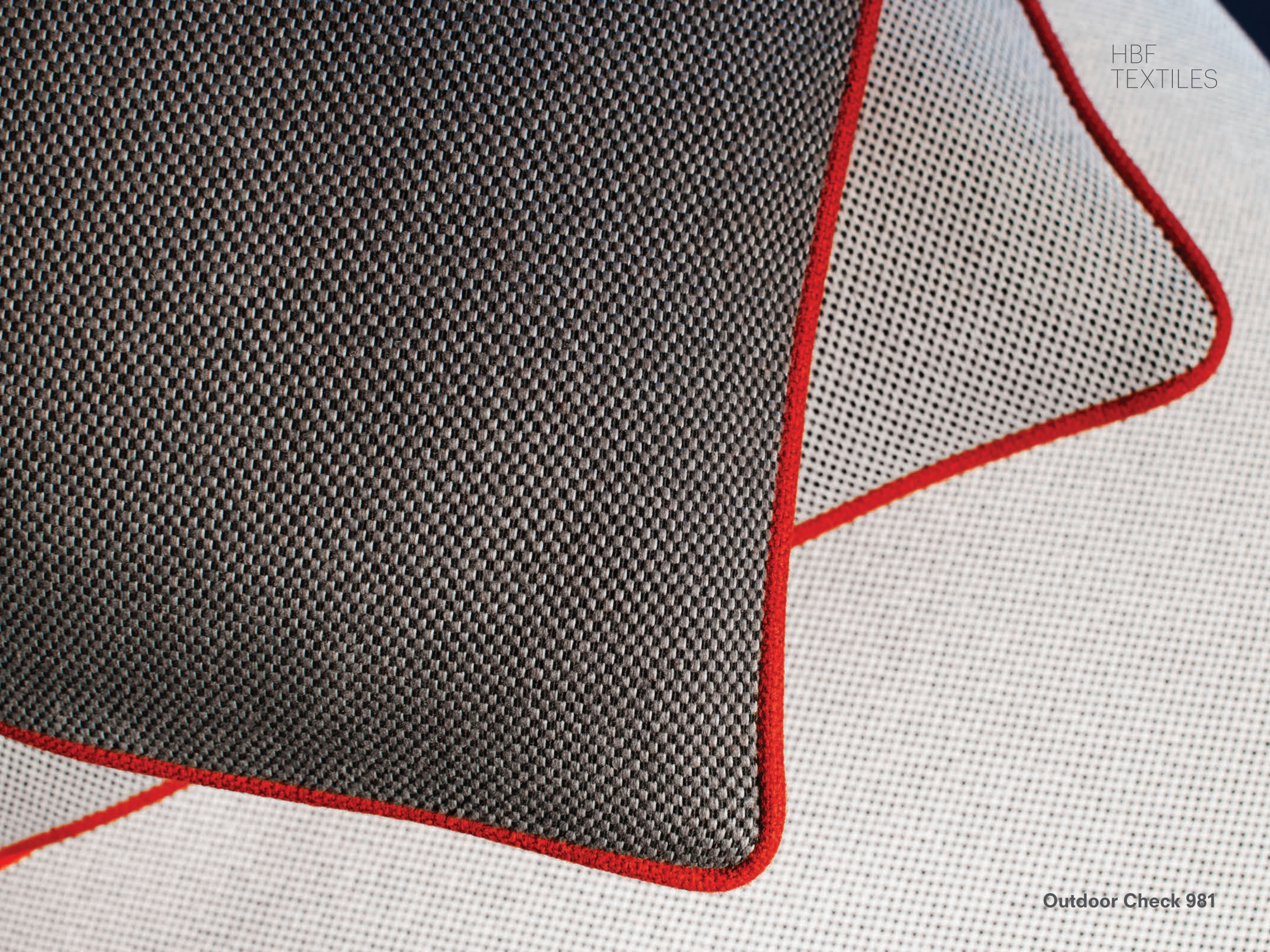


# Italian Wool

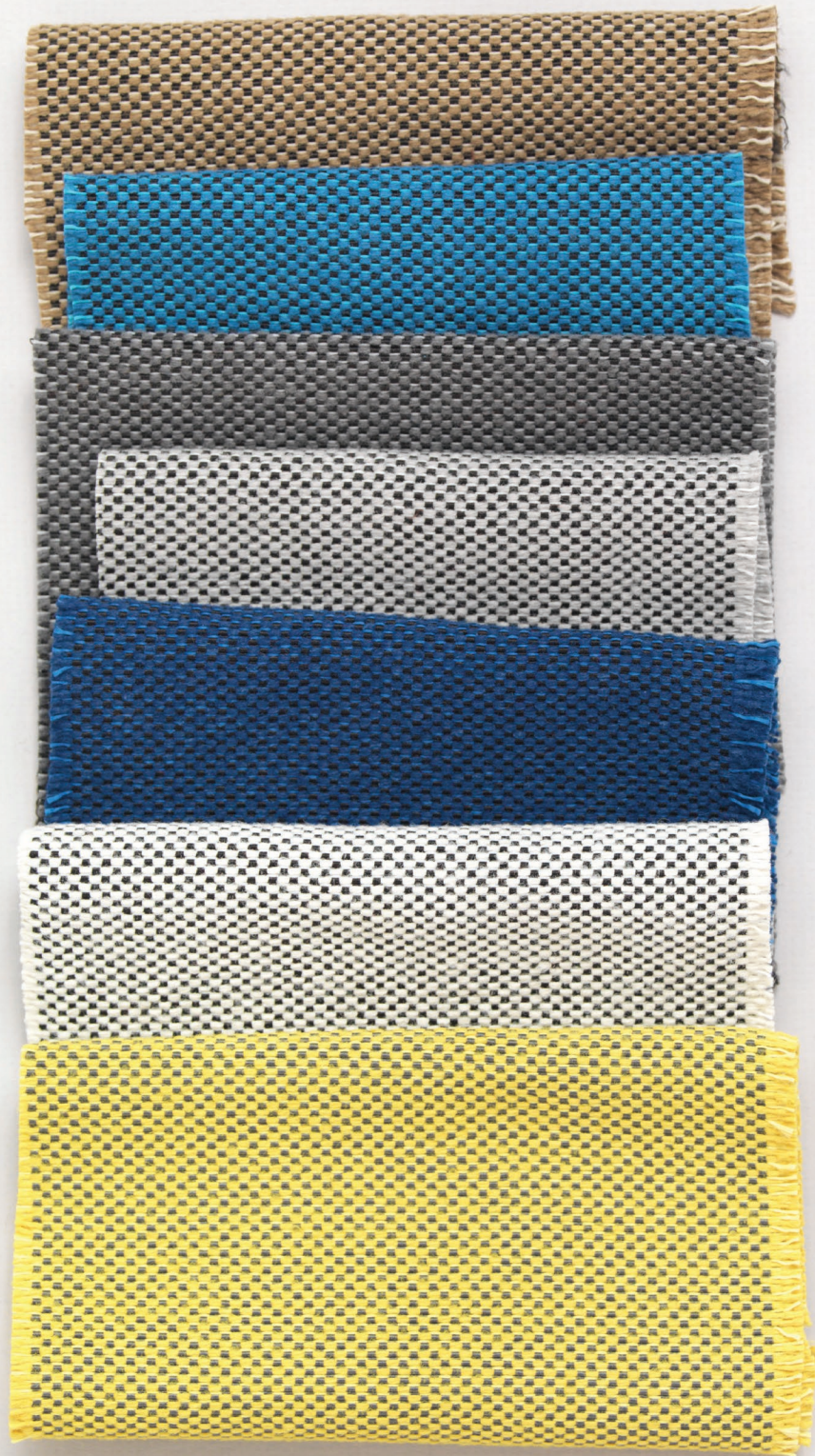
Italian Wool is that uber soft material available in a large range of colorations. A truly matte smooth wool classic that is a more elegant alternative to felt. With a slight stretch, Italian Wool will upholster beautifully on all styles of furniture.

<b>COLORWAYS</b>	14
<b>APPLICATION</b>	Upholstery
<b>CONTENT</b>	100% wool
<b>WIDTH</b>	54" W
<b>REPEAT</b>	None
<b>WEIGHT</b>	24.19 ounces per linear yard
<b>FINISH</b>	None
<b>BACKING</b>	None
<b>ABRASION</b>	98,000 double rubs (M)
<b>ORIGIN</b>	Italy
<b>FLAME RESISTANCE</b>	California TB 117-2013 Section 1 (Pass)
<b>MAINTENANCE</b>	S: Clean with water free dry cleaning solvent
<b>SUSTAINABILITY</b>	100% rapidly renewable content









# Outdoor Check

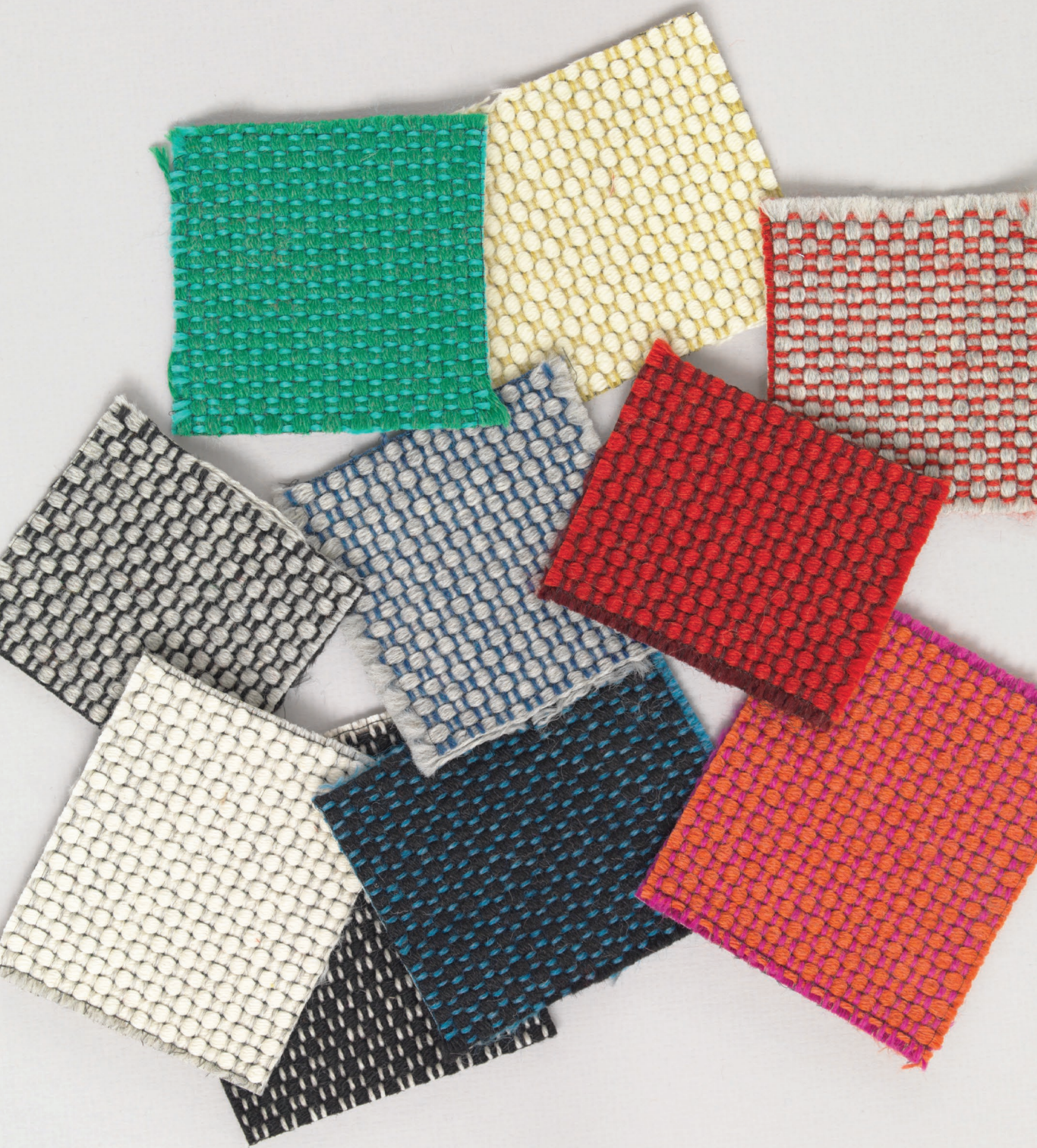
Outdoor Check is approved for indoor/outdoor applications with its micro bumpy texture. The slight color variations give it depth and detail while its bleach cleanable attributes give it tremendous performance.

<b>COLORWAYS</b>	9
<b>APPLICATION</b>	Upholstery
<b>CONTENT</b>	100% Bella-Dura® polyolefin
<b>WIDTH</b>	54" W
<b>REPEAT</b>	1/8" V x 1/8" H
<b>WEIGHT</b>	15.90 ounces per linear yard
<b>FINISH</b>	Water and stain repellent
<b>BACKING</b>	None
<b>ABRASION</b>	50,000 double rubs (W)
<b>ORIGIN</b>	United States
<b>FLAME RESISTANCE</b>	California TB 117-2013 Section 1 (Pass)
<b>MAINTENANCE</b>	WS: Clean with upholstery shampoo or mild dry cleaning solvent. Bleach solutions of up to 20% for cleaning difficult stains.
<b>NOTES</b>	Approved for outdoor use. Bleach cleanable.









# Double Stitch

Gigantic wool yarns form the structure for this warm, modern, Scandinavian looking texture. This effect is the outcome of using two pairs of differently colored yarns for the warp and weft for a basket weave with dimension.

<b>COLORWAYS</b>	10
<b>APPLICATION</b>	Upholstery
<b>CONTENT</b>	97% wool, 3% nylon
<b>WIDTH</b>	48" W
<b>REPEAT</b>	None
<b>WEIGHT</b>	33.90 ounces per linear yard
<b>FINISH</b>	None
<b>BACKING</b>	Light acrylic
<b>ABRASION</b>	100,000 double rubs (W)
<b>ORIGIN</b>	United States
<b>FLAME RESISTANCE</b>	California TB 117-2013 Section 1 (Pass)
<b>MAINTENANCE</b>	S: Clean with water free dry cleaning solvent
<b>SUSTAINABILITY</b>	97% rapidly renewable content





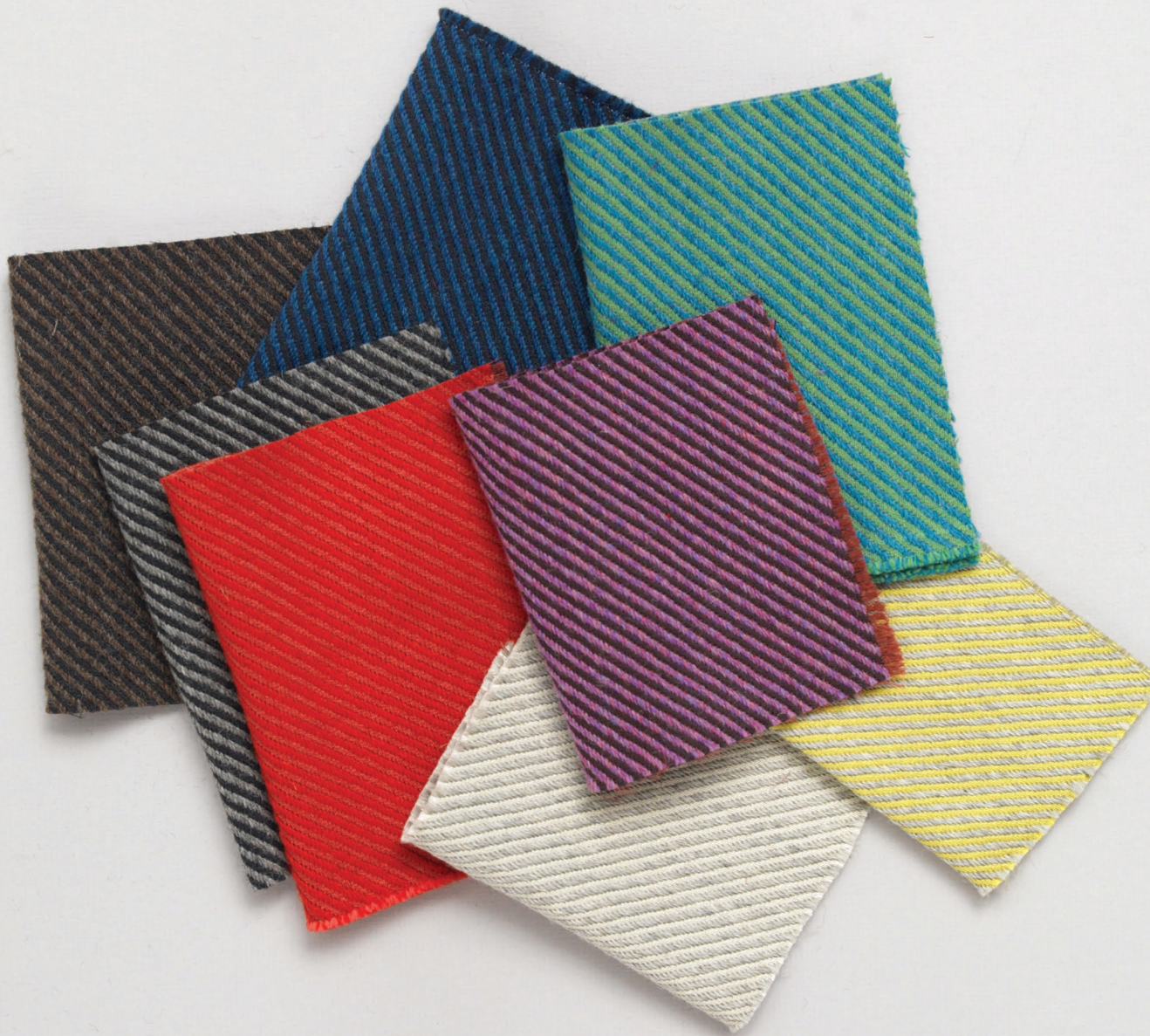


HBF  
TEXTILES



**Sideways 985**



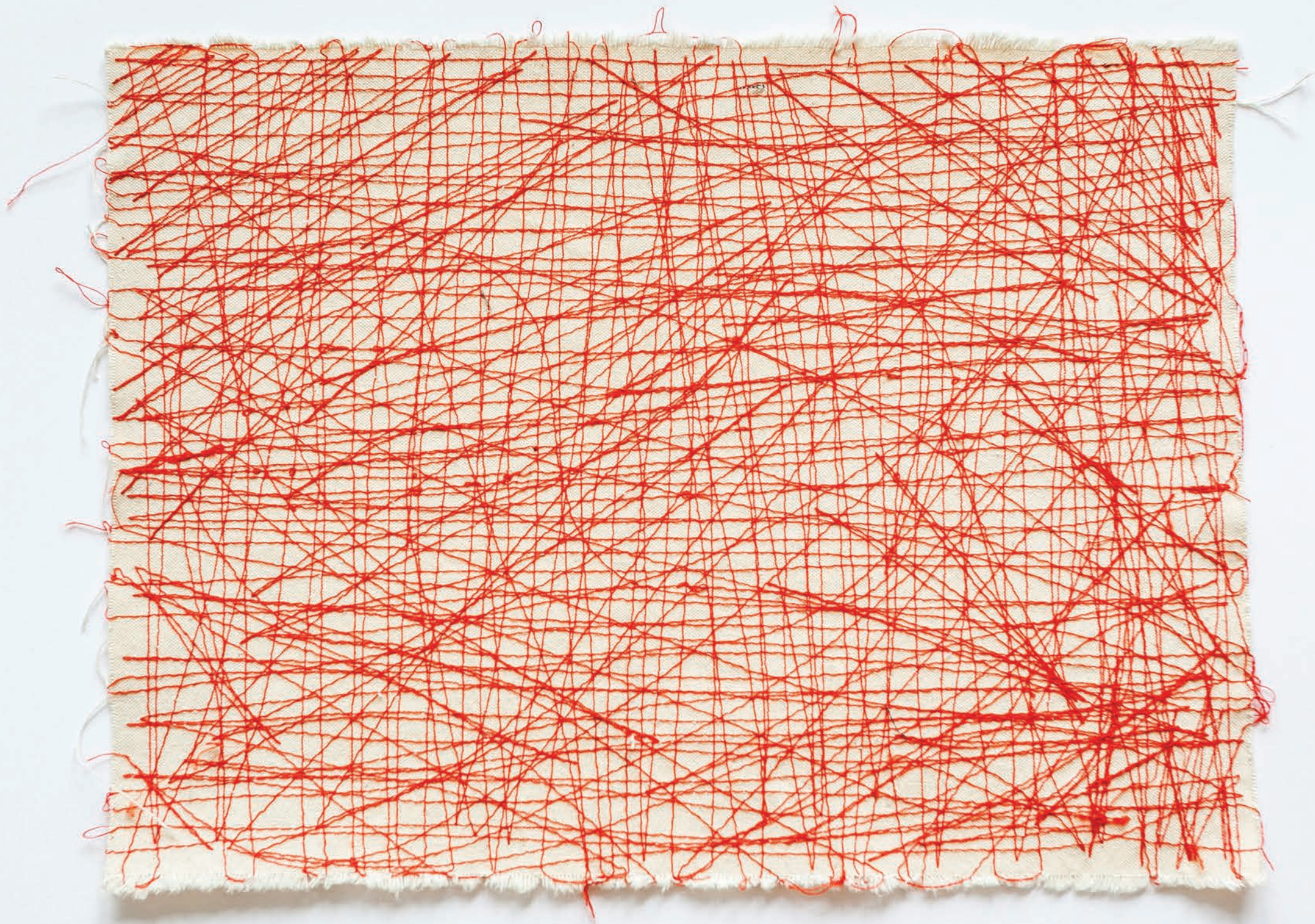


# Sideways

The classic twill rendered in the similar bulky yarns as Double Stitch for a heftier diagonal pattern. Sideways has a dryer hand and smoother finish with a true modern aesthetic.

<b>COLORWAYS</b>	8
<b>APPLICATION</b>	Upholstery
<b>CONTENT</b>	47% wool, 31% cotton, 22% nylon
<b>WIDTH</b>	48" W
<b>REPEAT</b>	None
<b>WEIGHT</b>	22.25 ounces per linear yard
<b>FINISH</b>	None
<b>BACKING</b>	Light acrylic
<b>ABRASION</b>	56,000 double rubs (M)
<b>ORIGIN</b>	United States
<b>FLAME RESISTANCE</b>	California TB 117-2003 Section 1 (Pass)
<b>MAINTENANCE</b>	S: Clean with water free dry cleaning solvent
<b>SUSTAINABILITY</b>	78% rapidly renewable content







# Scribble XS

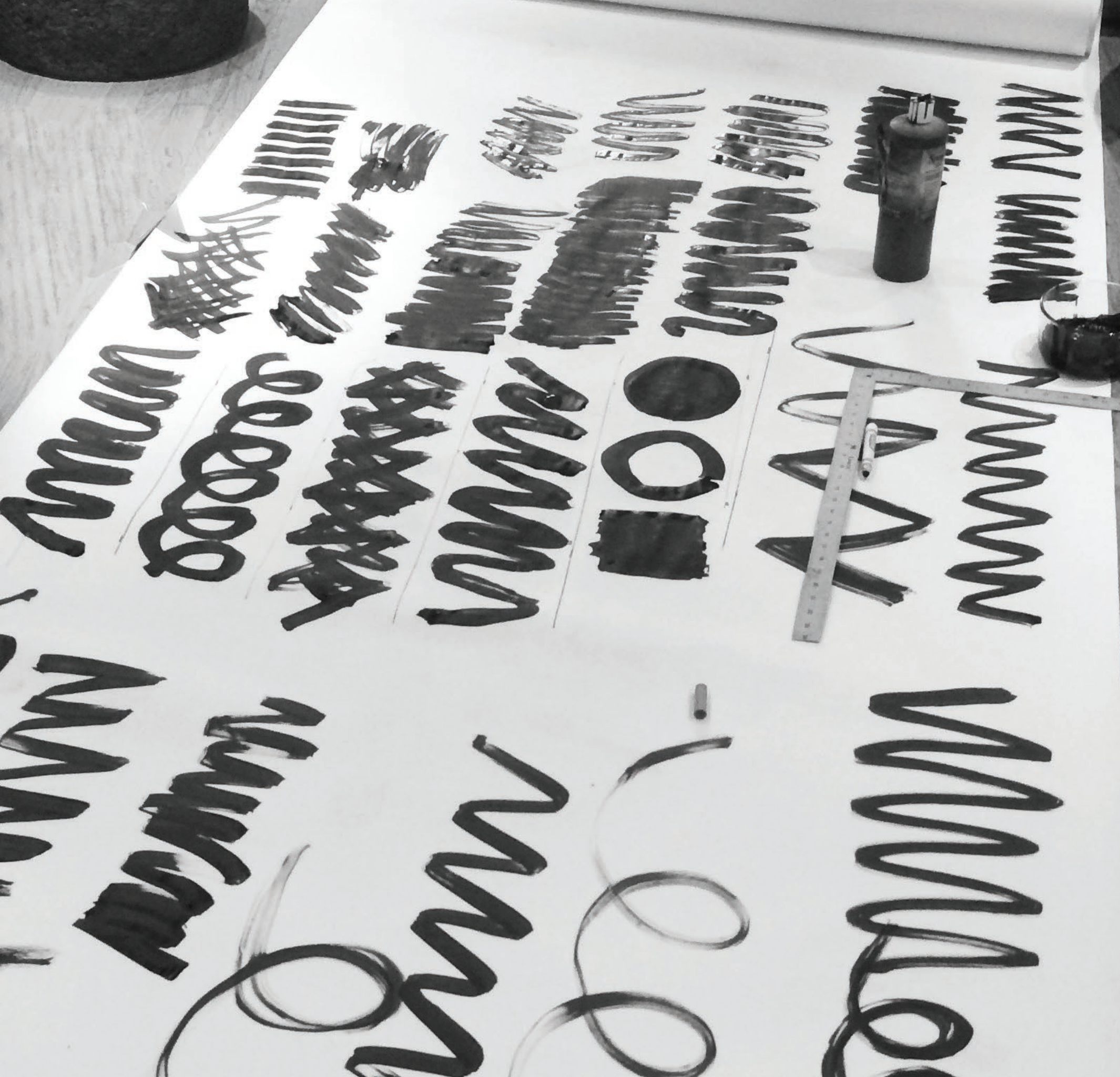
As a fiber artist, Elodie sews arbitrarily on canvas to create stitched patterns. With Scribble XS she created many different sewing trials giving herself different rules like in drawing class: one continuous line, only right angles, no line should touch another, etc.

<b>COLORWAYS</b>	11
<b>APPLICATION</b>	Upholstery
<b>CONTENT</b>	45% cotton, 34% nylon, 21% post-consumer recycled polyester
<b>WIDTH</b>	54" W
<b>REPEAT</b>	24 3/4" V x 13 1/2" H
<b>WEIGHT</b>	14.88 ounces per linear yard
<b>FINISH</b>	Alta™
<b>BACKING</b>	Light acrylic
<b>ABRASION</b>	100,000 double rubs (W)
<b>ORIGIN</b>	United States
<b>FLAME RESISTANCE</b>	California TB 117-2013 Section 1 (Pass)
<b>MAINTENANCE</b>	S: Clean with water free dry cleaning solvent
<b>SUSTAINABILITY</b>	45% rapidly renewable content 21% recycle content











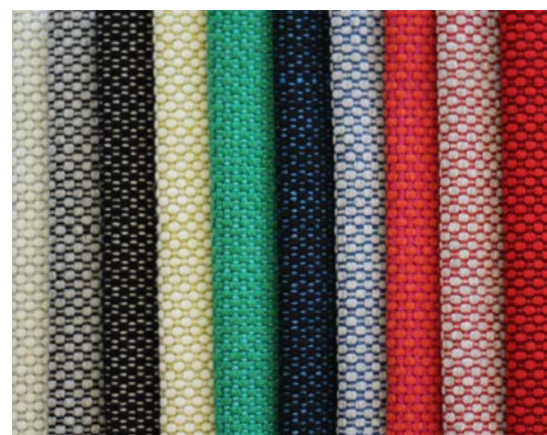
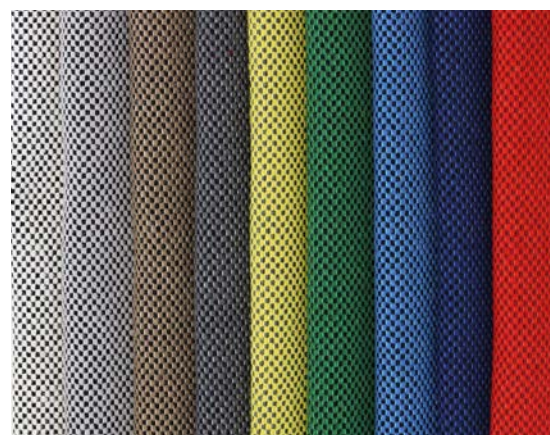
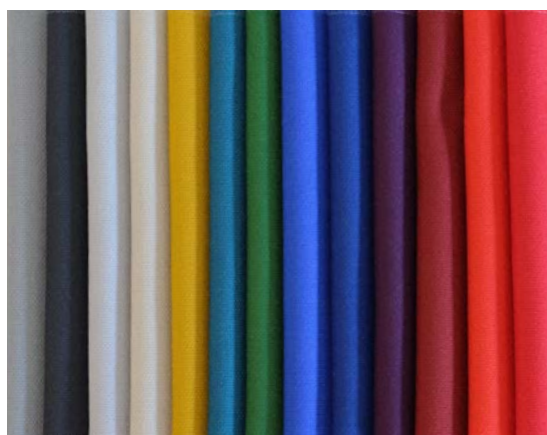
# Scribble XL

Scribble XL was painted by Elodie with large gestural brush strokes on a white canvas. She chose to keep the scale large to capture the energetic abstract nature of the original painting in the fabric translation.

<b>COLORWAYS</b>	4
<b>APPLICATION</b>	Upholstery
<b>CONTENT</b>	74% polyester, 26% acrylic
<b>WIDTH</b>	56" W
<b>REPEAT</b>	7" V x 22" H (fabric shown railroaded)
<b>WEIGHT</b>	16.73 ounces per linear yard
<b>FINISH</b>	None
<b>BACKING</b>	None
<b>ABRASION</b>	100,000 double rubs (W)
<b>ORIGIN</b>	Germany
<b>FLAME RESISTANCE</b>	California TB 117-2013 Section 1 (Pass)
<b>MAINTENANCE</b>	WS: Clean with upholstery shampoo or mild dry cleaning solvent. Bleach solutions of up to 10% for cleaning difficult stains.
<b>NOTES</b>	Large scale design. Bleach cleanable.



## Raw Materials Collection Pattern Color Rotation



### Italian Wool 987

- |                   |                |
|-------------------|----------------|
| 11 Crème          | 67 Vert        |
| 85 Gris           | 55 Bleu Royal  |
| 89 Anthracite     | 58 Bleu Marine |
| 83 Argent         | 77 Violet      |
| 18 Grège          | 46 Cinabre     |
| 25 Moutarde       | 43 Tomate      |
| 56 Bleu Turquoise | 44 Rouge       |

### Outdoor Check 981

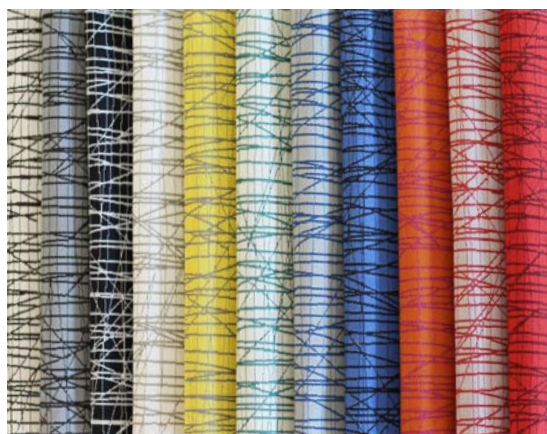
- |               |                |
|---------------|----------------|
| 10 Blanc      | 58 Bleu Marine |
| 83 Argent     | 44 Rouge       |
| 35 Marron     |                |
| 89 Anthracite |                |
| 22 Citron     |                |
| 67 Vert       |                |
| 54 Azur       |                |

### Double Stitch 986

- |                |            |
|----------------|------------|
| 11 Crème       | 43 Tomate  |
| 89 Anthracite  | 48 Vermeil |
| 90 Noir        | 44 Rouge   |
| 63 Anis        |            |
| 67 Vert        |            |
| 59 Cobalt      |            |
| 58 Bleu Marine |            |

### Sideways 985

- |             |          |
|-------------|----------|
| 10 Blanc    | 44 Rouge |
| 39 Chocolat |          |
| 90 Noir     |          |
| 22 Citron   |          |
| 67 Vert     |          |
| 59 Cobalt   |          |
| 77 Violet   |          |



### Scribble XS 982

- |               |                |
|---------------|----------------|
| 10 Blanc      | 58 Bleu Marine |
| 85 Gris       | 45 Orange      |
| 90 Noir       | 43 Tomate      |
| 18 Grège      | 44 Rouge       |
| 22 Citron     |                |
| 67 Vert       |                |
| 55 Bleu Royal |                |

### Scribble XL 983

- |                   |
|-------------------|
| 18 Grège          |
| 90 Noir           |
| 56 Bleu Turquoise |
| 54 Azur           |



