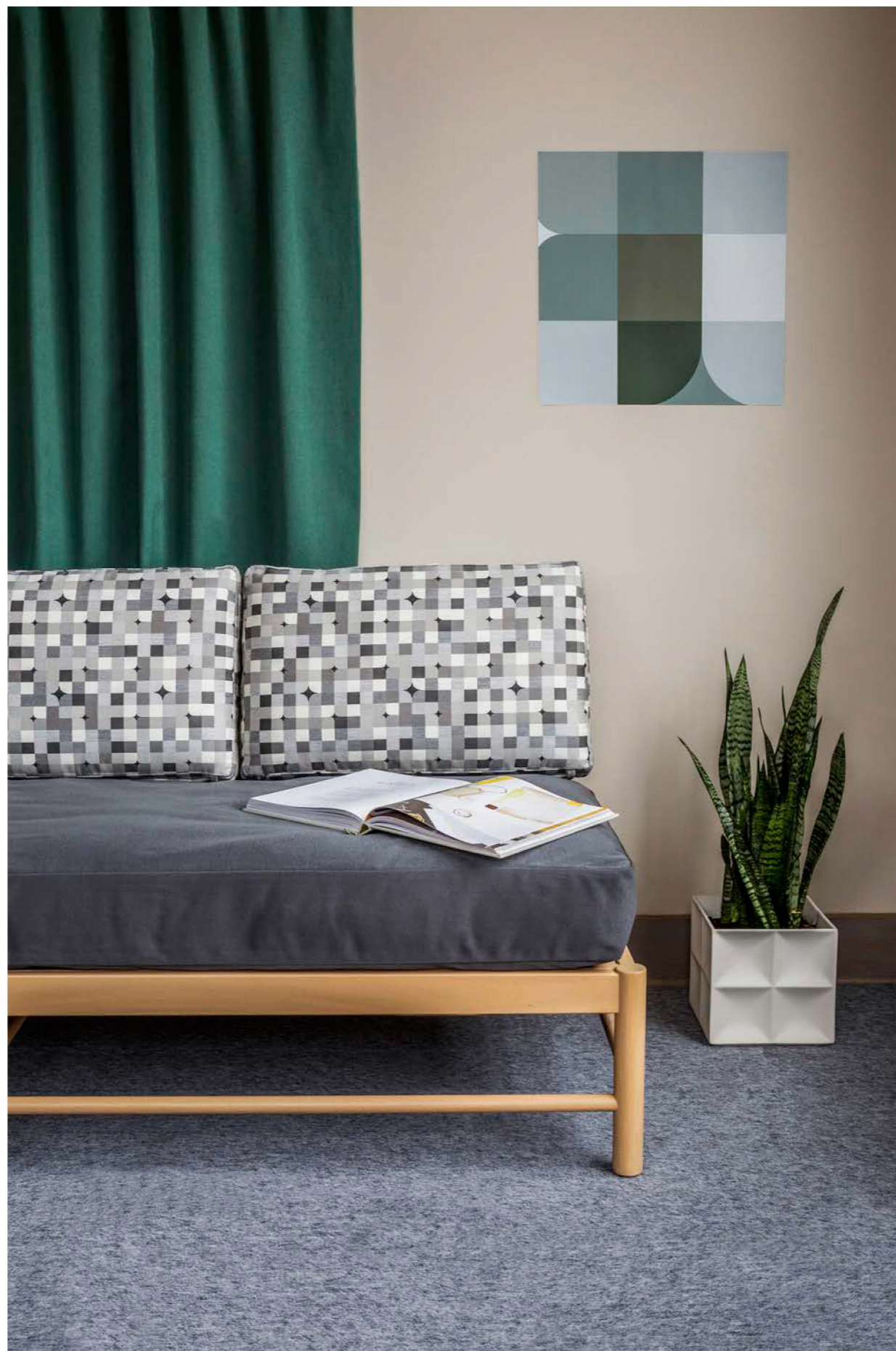


HBF
TEXTILES

COLOR BLOCK COLLECTION BY BARBARA BARRY



Color Block Collection

Fall 2017



Barbara Barry

The Color Block collection speaks to Barry's refined sense of proportion, balance and texture with her well-orchestrated use of color. Barbara reflects, "As a designer of furniture and of form I like to use solid fabrics in a color blocking way...knowing that blocks of color juxtaposed against other blocks of color, create pattern in the most modern way."

Barry is inspired by form and color, and thrills to the relationships they create. In addition, she marvels at the naturally elegant color palettes found in nature and how it is reinterpreted through fiber. She adds, "Color Block is a collection of solid colored textiles with varying textures inspired by the color combinations in nature that pair together naturally and elegantly."

“As a designer of furniture and of form I like to use solid fabrics in a color blocking way...knowing that blocks of color juxtaposed against other blocks of color, create pattern in the most modern way.”

– Barbara Barry, Fall 2017



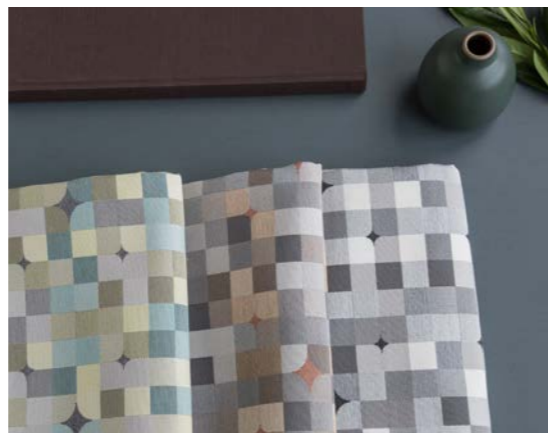
HBF
TEXTILES



Color Block Collection



Wrap Around 992



Paintbox 990



Dry Run 988



Lava Rock 993



Crosstweed 991



Attaché 710

Wrap Around

Wrap Around is a 100% Trevira® CS construction with multiple applications for upholstery, wrapped panels and drapery. With a subtle texture and flexible hand, Wrap Around comes in an extensive palette of saturated and versatile colors.

PATTERN	992
COLORWAYS	11
APPLICATION	Upholstery, Wrapped Panel, Systems Panel, Drapery
CONTENT	100% Trevira® CS
WIDTH	54" W
REPEAT	None
WEIGHT	18.72 ounces per linear yard
FINISH	None
BACKING	None
ABRASION	100,000 double rubs (W)
ORIGIN	Germany
FLAME RESISTANCE	California TB 117-2013 Section 1 (Pass), NFPA 701 (Pass) Class A rated ASTM E-84 (unadhered),
MAINTENANCE	WS: Clean with upholstery shampoo or mild dry cleaning solvent. Bleach cleanable up to 10% for difficult stains.
NOTES	Bleach cleanable



Wrap Around 992
Paintbox 990
Dry Run 988
Lava Rock 993
Crosstweed 991

Paintbox

Paintbox is the multi-colored woven that pulls the whole collection together – offering three different color palettes with complementary solids. Its midsize scale of geometric squares will enliven any scheme. A Sunbrella® fabric, it is approved for outdoor use and is bleach cleanable.

PATTERN	990
COLORWAYS	3
APPLICATION	Upholstery
CONTENT	70.6% Sunbrella® acrylic, 29.4% Sunbrella® polyester
WIDTH	54" W
REPEAT	13 1/2" V x 14 1/4" H
WEIGHT	17.46 ounces per linear yard
FINISH	Water and stain repellent
BACKING	None
ORIGIN	United States
FLAME RESISTANCE	California TB 117-2013 Section 1 (Pass)
MAINTENANCE	WS: Clean with upholstery shampoo or mild dry cleaning solvent. Bleach cleanable up to 10% for difficult stains.
SUSTAINABILITY	NSF 336 Silver
NOTES	Approved for outdoor use. Large scale repeat. This pattern has accent colors that may not be visible within the sampled area. Bleach cleanable.



Wrap Around 992 + Paintbox 990



Dry Run

Dry Run is a textural plain with a relaxed sophistication. Its "sanded" texture and matte appearance is colored in soft neutrals to rich deep tones. Dry Run is composed of 52% recycled polyester making it a smart environmental choice.

PATTERN	988
COLORWAYS	9
APPLICATION	Upholstery
CONTENT	52% post-consumer recycled polyester, 48% cotton
WIDTH	54" W
REPEAT	None
WEIGHT	14.00 ounces per linear yard
FINISH	GreenShield®
BACKING	Acrylic
ABRASION	100,000 double rubs (W)
ORIGIN	Canada
FLAME RESISTANCE	California TB 117-2013 Section 1 (Pass)
MAINTENANCE	WS: Clean with upholstery shampoo or mild dry cleaning solvent
SUSTAINABILITY	52% recycled content, 48% rapidly renewable content
NOTES	High contrast yarn colors create an intended weathered appearance.



Lava Rock

Lava Rock is a modern quilted construction with a dimensional stitched pattern. Colored in black, warm white and cool grey it is architectural in nature and soft in hand. Its blend of cotton and recycled polyester makes it stain resistant and a good sustainable choice.

PATTERN	993
COLORWAYS	3
APPLICATION	Upholstery
CONTENT	61% cotton, 21% post-consumer recycled polyester, 18% nylon
WIDTH	54" W
REPEAT	6 1/2" V x 6 3/4" H
WEIGHT	26.75 ounces per linear yard
FINISH	Stain resistant
BACKING	Acrylic
ABRASION	100,000 double rubs (W)
ORIGIN	United States
FLAME RESISTANCE	California TB 117-2013 Section 1 (Pass)
MAINTENANCE	S: Clean with water free dry cleaning solvent
SUSTAINABILITY	61% rapidly renewable content, 21% recycled content





Crosstweed

Crosstweed is a blended fabric with a distinct textural nubby hand. It has a casual, residential feel with the durability of a contract fabric.

PATTERN	991
COLORWAYS	9
APPLICATION	Upholstery
CONTENT	51% acrylic, 16% cotton, 11% linen, 11% polyester, 11% viscose
WIDTH	54" W
REPEAT	None
WEIGHT	27.74 ounces per linear yard
FINISH	None
BACKING	None
ABRASION	100,000 double rubs (W)
ORIGIN	Italy
FLAME RESISTANCE	California TB 117-2013 Section 1 (Pass)
MAINTENANCE	S: Clean with water free dry cleaning solvent
SUSTAINABILITY	27% rapidly renewable content

HBF
TEXTILES



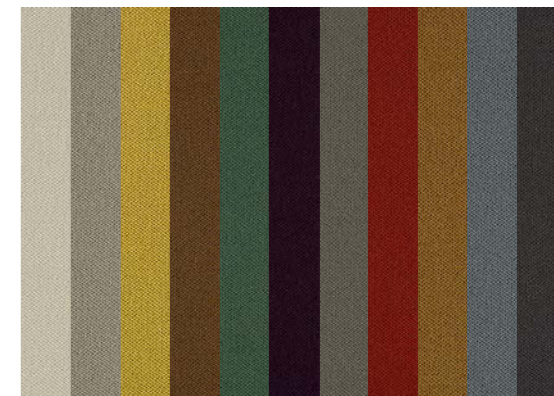
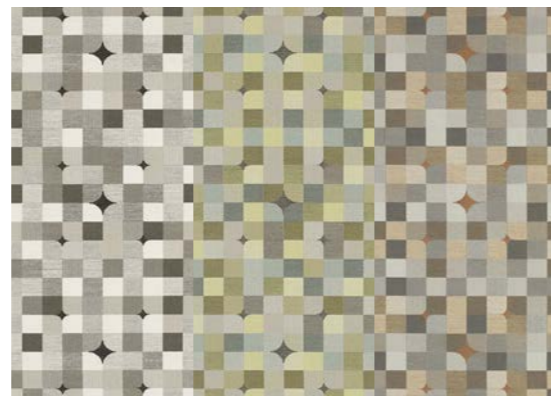
Crosstweed 991

Attaché

Attaché dovetails beautifully with the Color Block Collection. Northern European leather hides are used for this exquisite buttery soft leather.

PATTERN	710
COLORWAYS	7
APPLICATION	Upholstery
CONTENT	Full grain leather, full aniline dyed
AVERAGE HIDE	50 sq. ft.
AVERAGE THICKNESS	1.0-1.2 mm
WEIGHT	3.00 ounces per square foot
FINISH	Light protective
ORIGIN	Sweden
SUSTAINABILITY	European LIFE award for water treatment facility
NOTES	Slight shadowing is inherent in the face of this leather

Color Block Collection Pattern Color Rotation



Dry Run 988

- | | |
|--------------------|----------|
| 11 Salt | 83 Seal |
| 80 Perfect Neutral | 46 Adobe |
| 63 Pear | 58 Shale |
| 25 Pecan | |
| 56 Spruce | |
| 78 Bruise | |

Paintbox 990

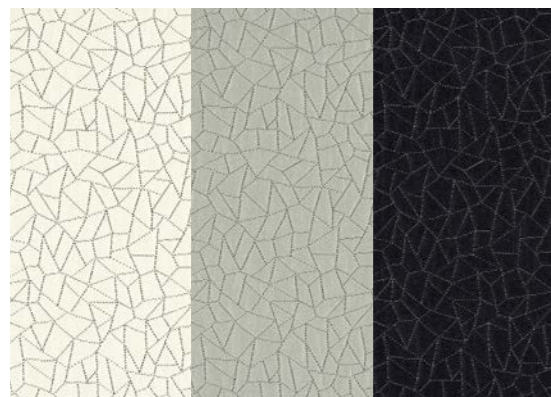
- | |
|--------------------|
| 80 Neutral Palette |
| 66 Cool Palette |
| 18 Warm Palette |

Crosstweed 991

- | | |
|--------------------|------------|
| 11 Salt | 59 Bespoke |
| 80 Perfect Neutral | 25 Pecan |
| 63 Pear | 89 Cinder |
| 37 Overcoat | |
| 56 Spruce | |
| 78 Bruise | |

Wrap Around 992

- | | |
|--------------------|------------|
| 11 Salt | 83 Seal |
| 80 Perfect Neutral | 74 Pompeii |
| 63 Pear | 25 Pecan |
| 32 Nougat | 58 Shale |
| 67 Eucalyptus | 89 Cinder |
| 78 Bruise | |



Lava Rock 993

- | |
|---------------|
| 10 White Hot |
| 80 Cooled Ash |
| 90 Black Sand |

Attaché 710

- | | |
|--------------|------------|
| 16 Oyster | 36 Bitters |
| 80 Misty | |
| 39 Mink | |
| 53 Blue Note | |
| 20 Tawny | |
| 18 Fedora | |

Color Block Collection

Fall 2017