

HBF
TEXTILES

SPRING 2017 COLLECTION



Spring 2017 Collection

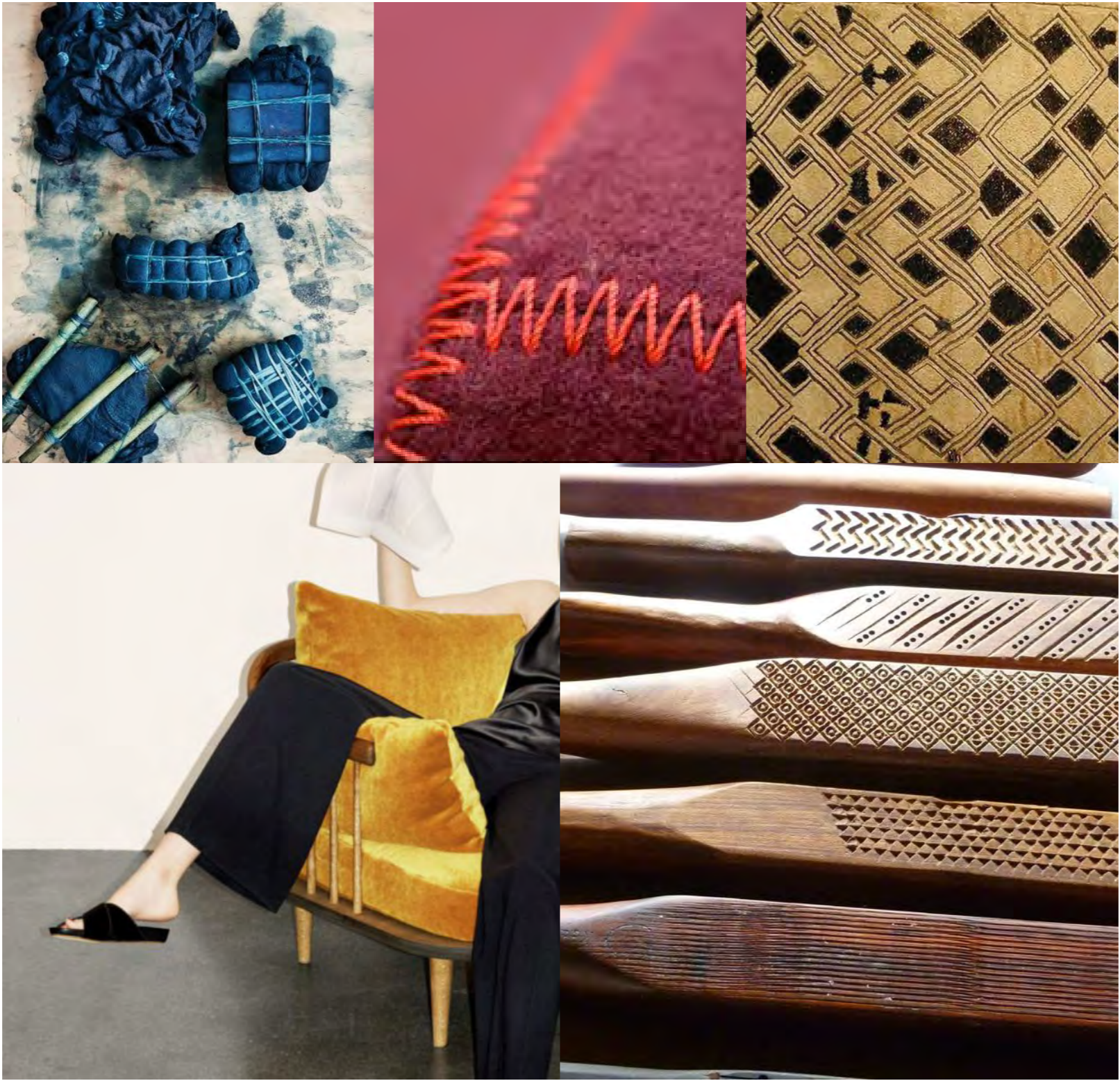
HBF
TEXTILES



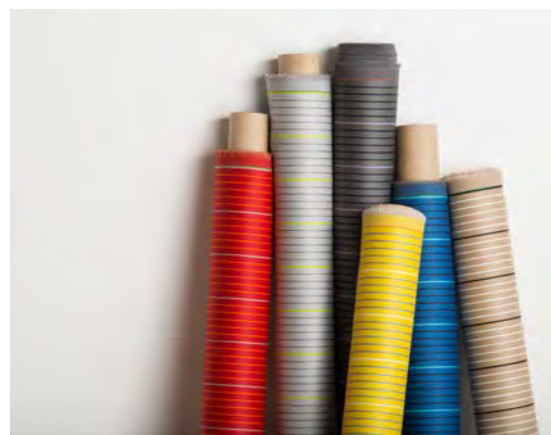
Spring 2017

With each collection launch at HBF Textiles, we are in constant search of unique materials expressing our belief that beautiful, durable fabrics don't need to be flat and boring to perform. Like a fervent explorer at a Parisian flea market, we look for uncommon goods that are unique and tell a story all their own. These stories involve origins of the maker, the craftsmen and women who bring a heritage of weaving and tanning that has been cultivated throughout many generations. Originating from four countries, Germany, Great Britain, Italy and the United States, Spring 2017 celebrates this heritage and individuality as we bring you textiles that are inviting to touch and all about bringing texture to life.

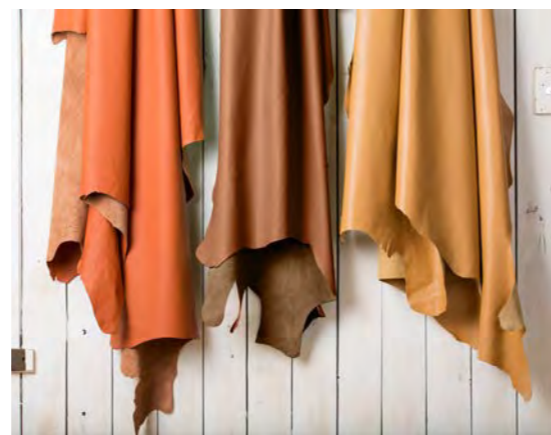
**...unique fabrics which tell a
story that's all their own...**



Spring 2017 Collection



Changing Lanes 976



Vivace II 709



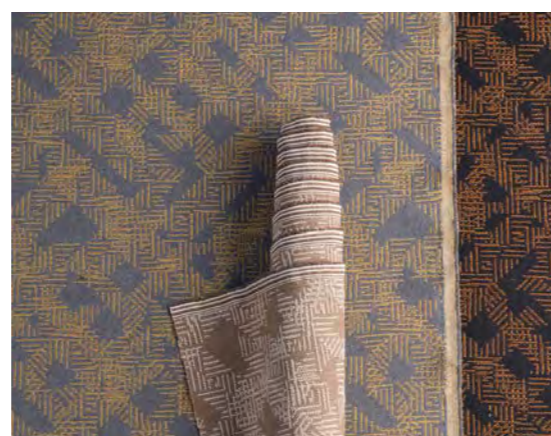
Heartfelt 828



Argyle Boucle 978



Burlap Rug 979



Crosshatch Cloth 980



Velvet Mix 977



Changing Lanes

Changing Lanes is a sumptuous worsted wool woven in a historic mill in England known for its exquisite worsted wool suiting



COLORWAYS	6
APPLICATION	Upholstery, Drapery*
CONTENT	92% wool, 8% nylon
WIDTH	56" W
REPEAT	1 7/8" H
WEIGHT	11.61 ounces per linear yard
FINISH	None
BACKING	None
ABRASION	100,000 double rubs (W)
ORIGIN	United Kingdom
FLAME RESISTANCE	California TB 117-2013 Section 1 (Pass), NFPA 701 (Pass)*
MAINTENANCE	S: Clean with water free dry cleaning solvent
SUSTAINABILITY	92% rapidly renewable content
NOTES	*Passes for drapery application with an additional FR treatment

HBF
TEXTILES



Changing Lanes 976





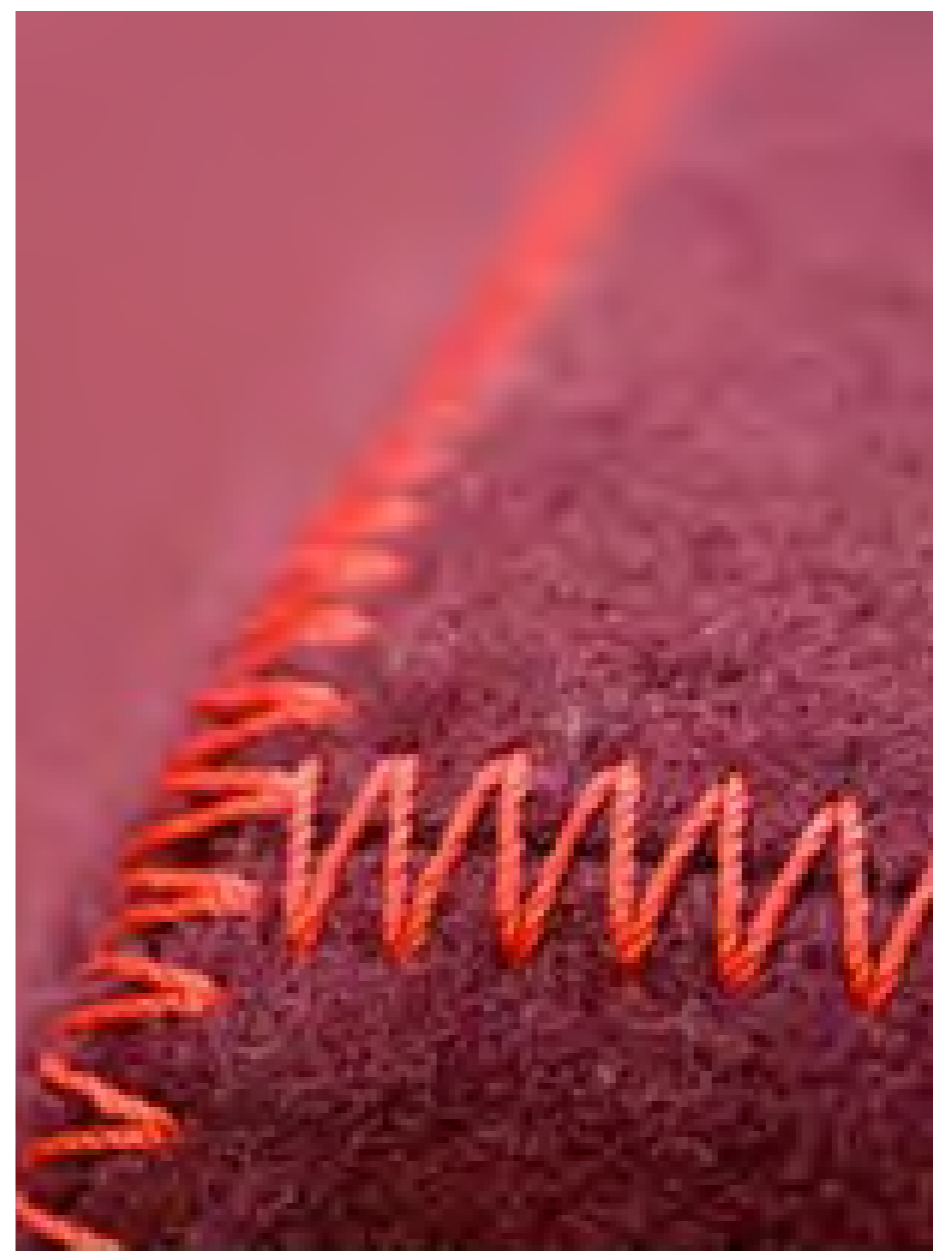
Spring 2017

HBF
TEXTILES

Vivace II

Vivace II is the best of both worlds, an incredible buttery soft hand with a light micro-pigmented finish that helps resist spills and stains.

COLORWAYS	15
APPLICATION	Upholstery
CONTENT	Full grain leather, full aniline dyed
AVERAGE HIDE	50 sq. ft.
AVERAGE THICKNESS	.90-1.0 mm
WEIGHT	3.00 ounces per square foot
FINISH	Light protective
BACKING	None
ORIGIN	Italy
FLAME RESISTANCE	NFPA 260 (UFAC Class 1), California TB 117-2013 Section 1 (Pass)
SUSTAINABILITY	Processed using low emission tanning formulas with vegetable agents, oils and natural fat liquors



Spring 2017

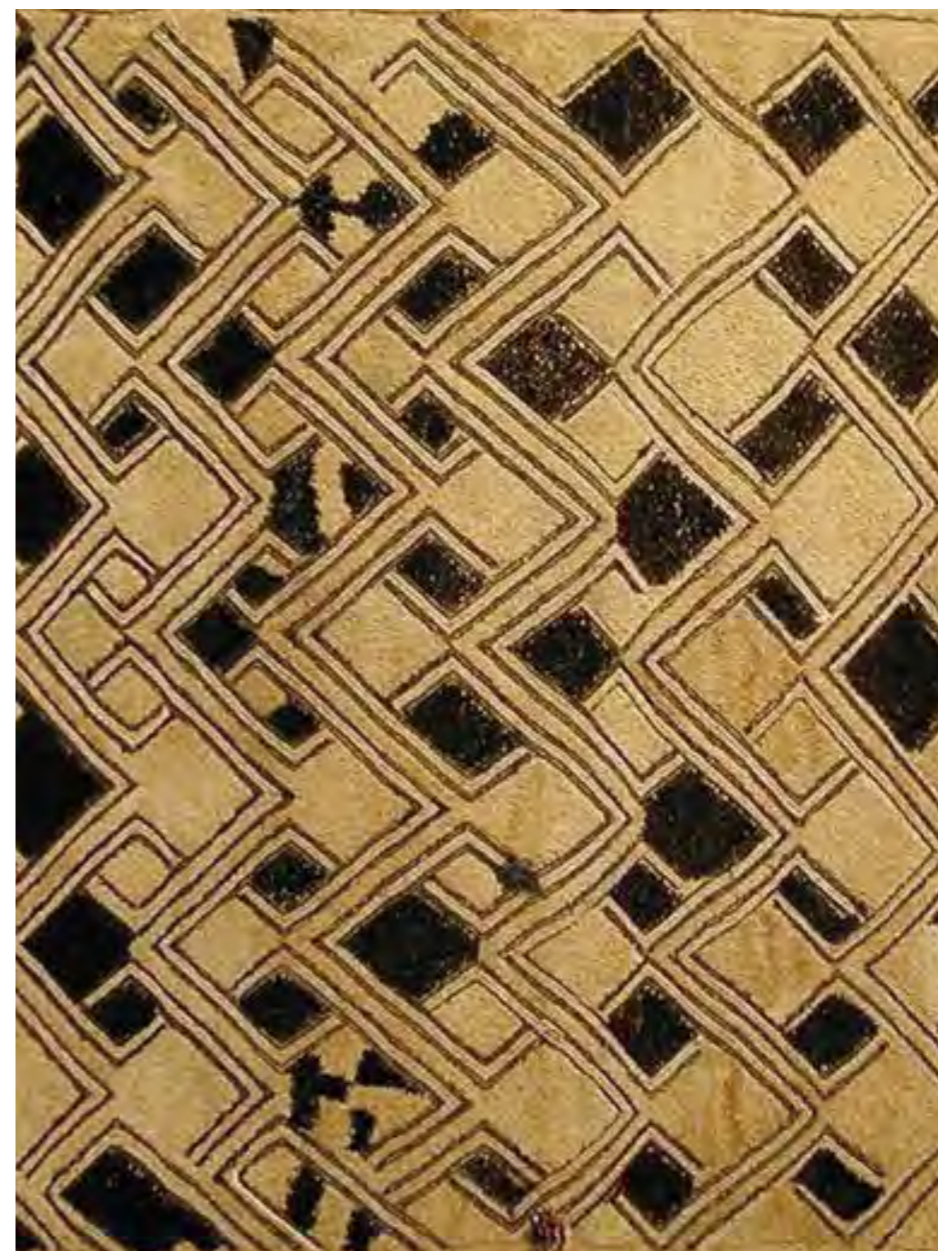
HBF
TEXTILES

Heartfelt

Heartfelt, HBF Textile's perennial felt classic, offered with even more color choices, ranging from light gentle neutrals to saturated jewel-tone shades

COLORWAYS	10
APPLICATION	Upholstery
CONTENT	100% wool
WIDTH	54" W
REPEAT	None
WEIGHT	17.60 ounces per linear yard
FINISH	None
BACKING	None
ABRASION	50,000 double rubs (W)
ORIGIN	United States
FLAME RESISTANCE	NFPA 260 (UFAC Class 1), California TB 117-2013 Section 1 compliant
MAINTENANCE	S: Clean with water free dry cleaning solvent
SUSTAINABILITY	100% rapidly renewable content. Third party certified Cradle to Cradle™ bronze.





Spring 2017

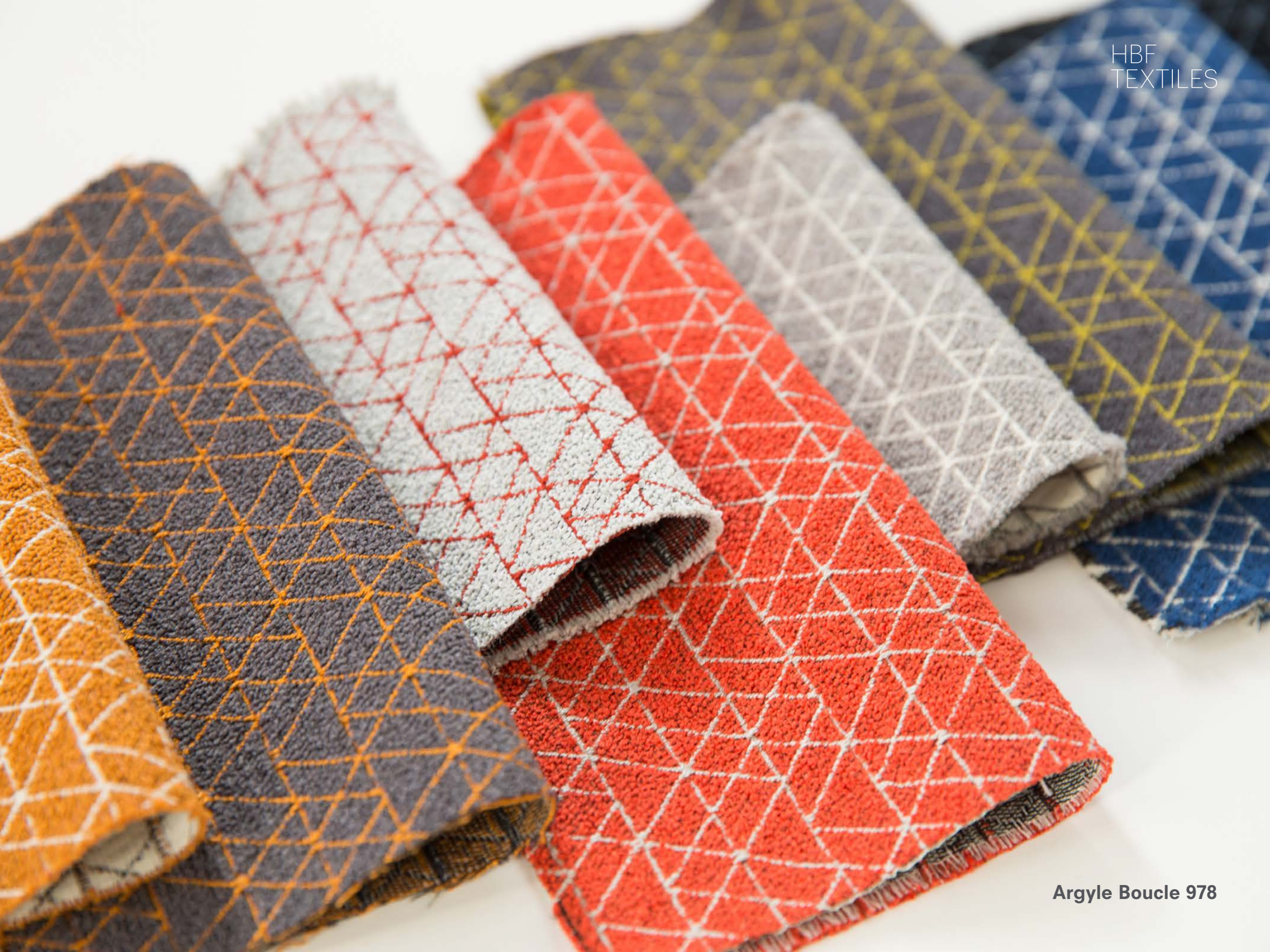
HBF
TEXTILES

Argyle Boucle

Argyle Boucle is rooted in an African Kuba cloth archive, incorporating strong repeating diamond forms across the surface.

COLORWAYS	8
APPLICATION	Upholstery
CONTENT	46% polyester, 43% rayon, 11% cotton
WIDTH	54" W
REPEAT	1 3/4" V x 1 3/4" H
WEIGHT	29.99 ounces per linear yard
FINISH	Alta™
BACKING	None
ABRASION	100,000 double rubs (W)
ORIGIN	Italy
FLAME RESISTANCE	California TB 117-2013 Section 1 (Pass)
MAINTENANCE	S: Clean with water free dry cleaning solvent
SUSTAINABILITY	11% rapidly renewable content







Burlap Rug

Burlap Rug pays homage to a Hawaiian Kapa cloth, a wet bark cloth that is pushed into a grooved paddle and beaten until a raised pattern is impressed into the material.

COLORWAYS	5
APPLICATION	Upholstery
CONTENT	63% acrylic, 37% polyester
WIDTH	54" W
REPEAT	1 3/4" V x 7/8" H
WEIGHT	19 ounces per linear yard
FINISH	None
BACKING	Acrylic
ABRASION	90,000 double rubs (W)
ORIGIN	United States
FLAME RESISTANCE	California TB 117-2013 Section 1 (Pass)
MAINTENANCE	S: Clean with water free dry cleaning solvent
SUSTAINABILITY	NSF 336 Compliant









Crosshatch Cloth

Crosshatch Cloth comes from a Japanese Kumo Shibori document, which utilizes manual folding, pleating and binding to resist dye in specific areas to create an intended pattern

COLORWAYS	8
APPLICATION	Upholstery
CONTENT	61% recycled cotton, 24% rayon, 15% polyester
WIDTH	54" W
REPEAT	14 1/8" V x 14 1/8" H
WEIGHT	24.79 ounces per linear yard
FINISH	None
BACKING	Acrylic
ABRASION	90,000 double rubs (W)
ORIGIN	United States
FLAME RESISTANCE	California TB 117-2013 Section 1 (Pass)
MAINTENANCE	S: Clean with water free dry cleaning solvent
SUSTAINABILITY	61% recycled content, NSF 336 Compliant



Crosshatch Cloth 980



Spring 2017

HBF
TEXTILES

Velvet Mix

Velvet Mix is the ultimate mix of a luxurious velvet pile with bleach-cleanable stamina!

COLORWAYS	19
APPLICATION	Upholstery
CONTENT	100% acrylic face, 100% polyester back
WIDTH	56" W
REPEAT	None
WEIGHT	19.26 ounces per linear yard
FINISH	None
BACKING	None
ABRASION	100,000 double rubs (W)
ORIGIN	Germany
FLAME RESISTANCE	California TB 117-2013 Section 1 (Pass)
MAINTENANCE	WS: Clean with upholstery shampoo or mild dry cleaning solvent. Bleach cleanable. Bleach solutions of up to 10% for cleaning difficult stains.
NOTES	Bleach cleanable



Spring 2017 Pattern Color Rotation



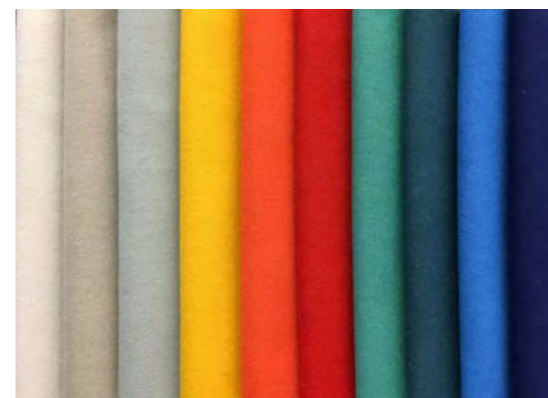
Changing Lanes 976

- 18 Great River Hwy.
- 44 Route 66 Hwy.
- 55 Blue Ridge Pkwy.
- 81 Columbia River Hwy.
- 22 Pacific Coast Hwy.
- 89 FDR Dr.



Vivace II 709

- | | |
|--------------|--------------|
| 32 Torino | 75 Dolcetto |
| 80 Varenna | 84 Cernobbio |
| 85 Milano | 64 Moltrasio |
| 90 Nero | 65 Menta |
| 25 Limone | 68 Giardino |
| 24 Caramello | 54 Lago |
| 46 Fresco | 59 Marino |
| 35 Marrone | |



Heartfelt 828

- | | |
|------------------|--------------|
| 80 Mist | 67 Succulent |
| 16 Twine | 58 Nostalgia |
| 81 Frosted Glass | 55 New Day |
| 22 Sunflower | 57 Lapis |
| 47 Orange Zest | |
| 43 Love Letter | |



Argyle Boucle 978

- | | |
|-------------------|---------------|
| 85 Cement | 55 Watercolor |
| 63 Acid | 95 Blackout |
| 44 Salsa | |
| 43 Cadmium Orange | |
| 36 Raw Sienna | |
| 45 Squash | |



Burlap Rug 979

- 80 Paper Mache
- 90 Newspaper
- 30 Sepia
- 93 Shadow
- 59 Night Sky



Crosshatch Cloth 980

- | | |
|----------------|------------------|
| 37 Craft Paper | 55 Watercolor |
| 63 Acid | 67 Phthalo Green |
| 41 Flora | |
| 44 Salsa | |
| 45 Squash | |
| 25 Tequila | |



Velvet Mix 977

- | | | |
|----------------|-------------------|------------------|
| 80 Paper Mache | 30 Sepia | 57 Ultramarine |
| 37 Craft Paper | 45 Squash | 55 Watercolor |
| 85 Cement | 43 Cadmium Orange | 58 Cerulean |
| 84 Potion | 36 Raw Sienna | 67 Phthalo Green |
| 89 Ink | 44 Salsa | 62 Grass |
| 63 Acid | 75 Deep Crimson | 66 Martini |
| 25 Tequila | | |

