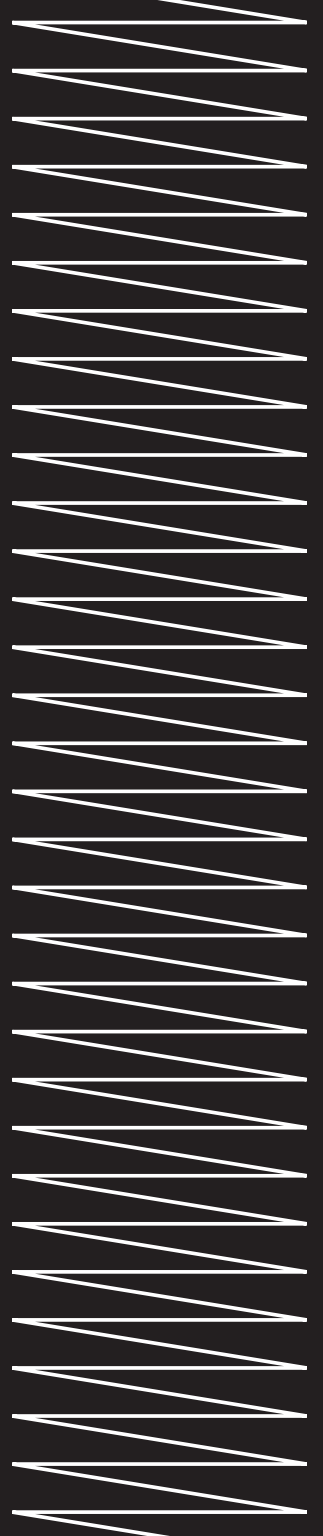


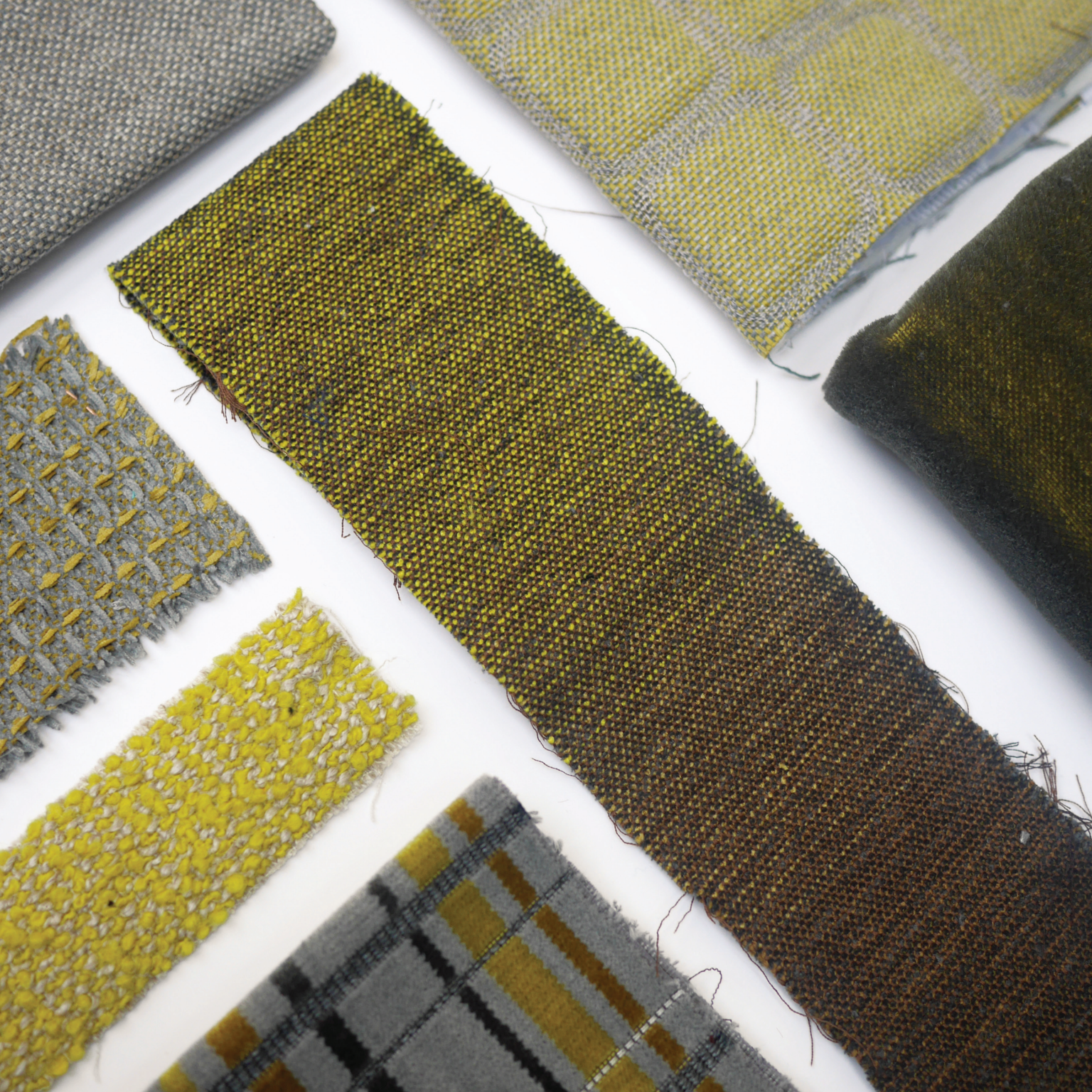
HBF  
TEXTILES



**Fabrics  
with a  
character.**

**Christiane  
Müller  
Collection**

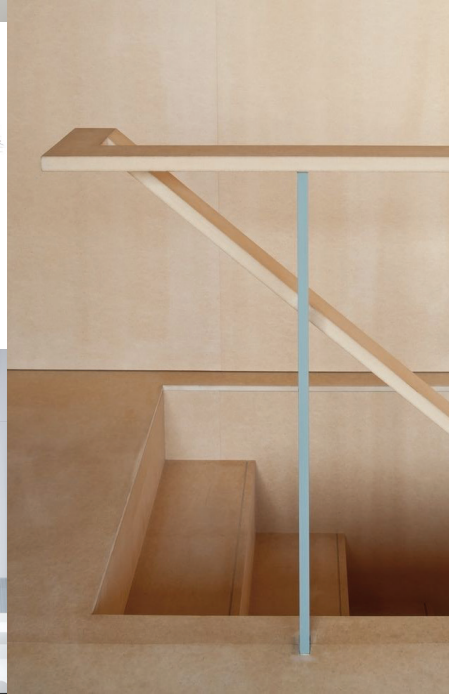




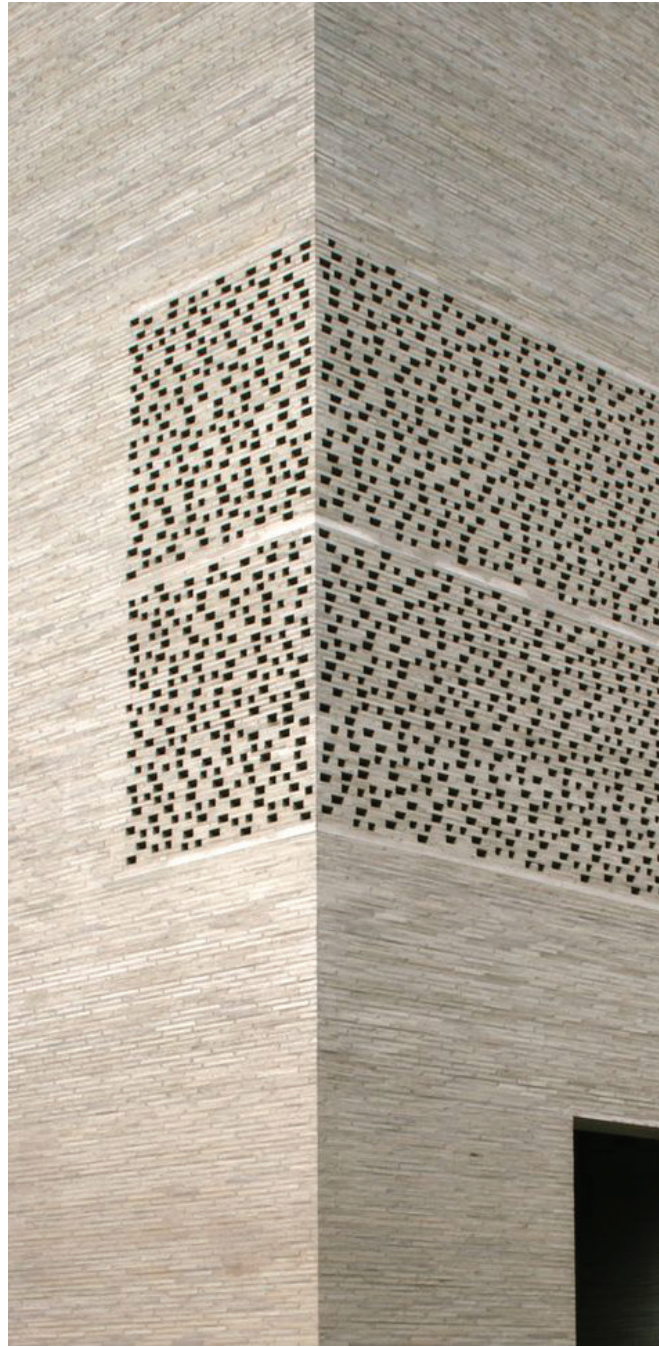
## **Christiane Müller Collection 2016**

An inviting collection of tactile comfort that blurs the line between work and home.





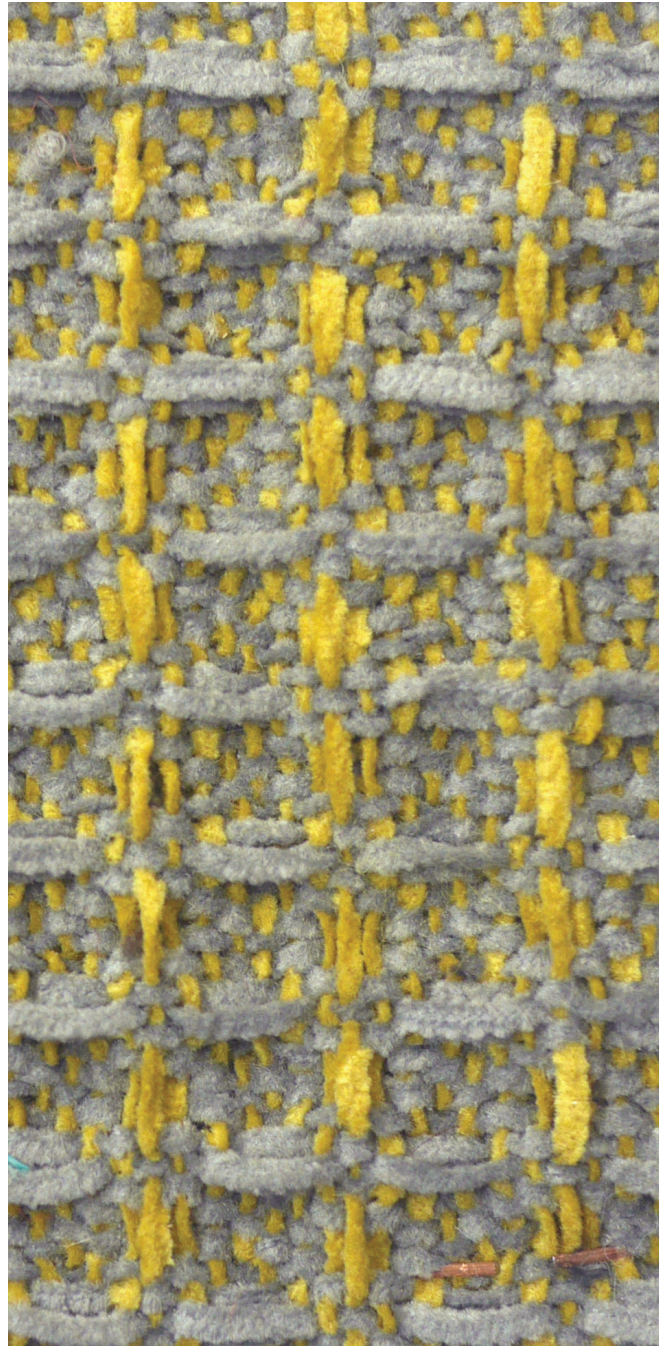




## Honest

A natural and modest textile inspired by the work of architect Peter Zumthor, Honest's soft color mélange melds easily with its surroundings, giving new meaning to the "power of ordinary."





## Complex

Inspired by the work of Dutch artist Jan Schoonhoven, Complex showcases the beauty of a chenille waffle weave construction with a soft, graphic grid.





## Dreamy

Embodying the ethereal feeling of an Alexis Sementner abstract painting, Dreamy's soft chenille yarns employ a subtle ombre, blurring the line of where color ends and begins.





## Smart

A playful interaction of pattern, texture and hue, Smart's edgy three-dimensional plaid and luxurious velvet composition is inspired by Isa Gensken's savvy combinations of color and material.





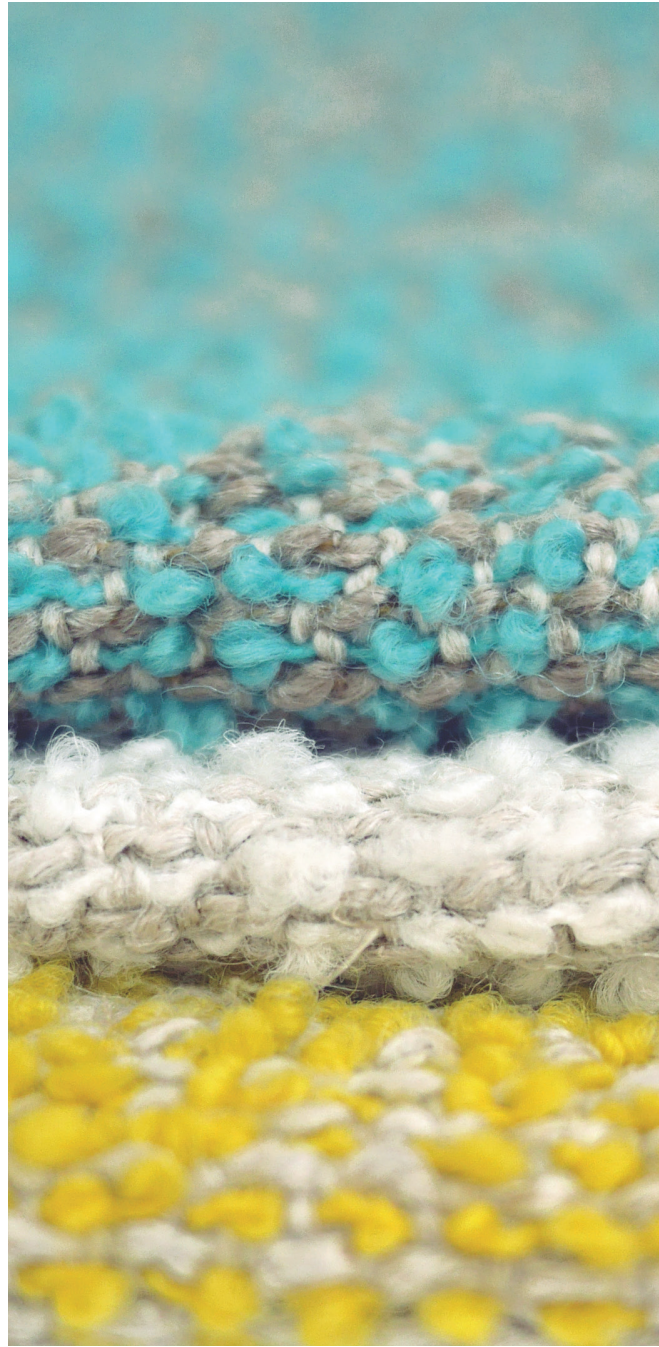




## Eccentric

Luxury in its purest form, Eccentric's mohair velvet construction captures hidden colors and the essence of Lex Pott.





## Flirt

A nod to the playful work of fashion designer Walter Van Beirendonck, Flirt's vivid combination of boucle fabric and fluorescent yarns create an immediate sense of comfort and unexpected whimsy.





## Christiane Müller

Christiane Müller creates surface materials. She exploits the possibilities of machine production through a design process rooted in craftwork. Originally from Germany, Christiane now creates designs from her studio in Amsterdam. With broad international experience as an industrial designer, she develops color and material concepts for innovative products like floors, rugs, walls, interior textiles, lighting and furniture. To Christiane, good design means more than functionality and aesthetics. It means ensuring affordability and capturing the zeitgeist.



