

HBF TEXTILES

SPRING 2020 COLLECTION BY HBF TEXTILES STUDIO



Spring 2020 Collection

Spring 2020 Collection



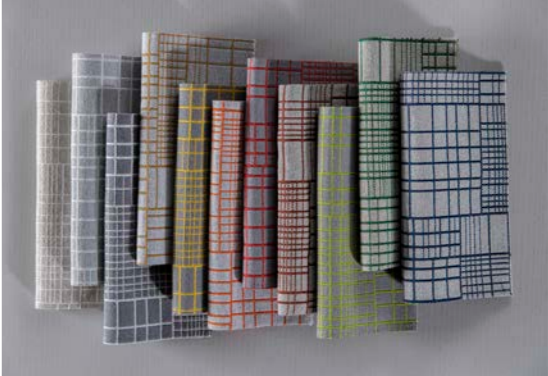
Landscape Blur 1024



Sherpa 1031

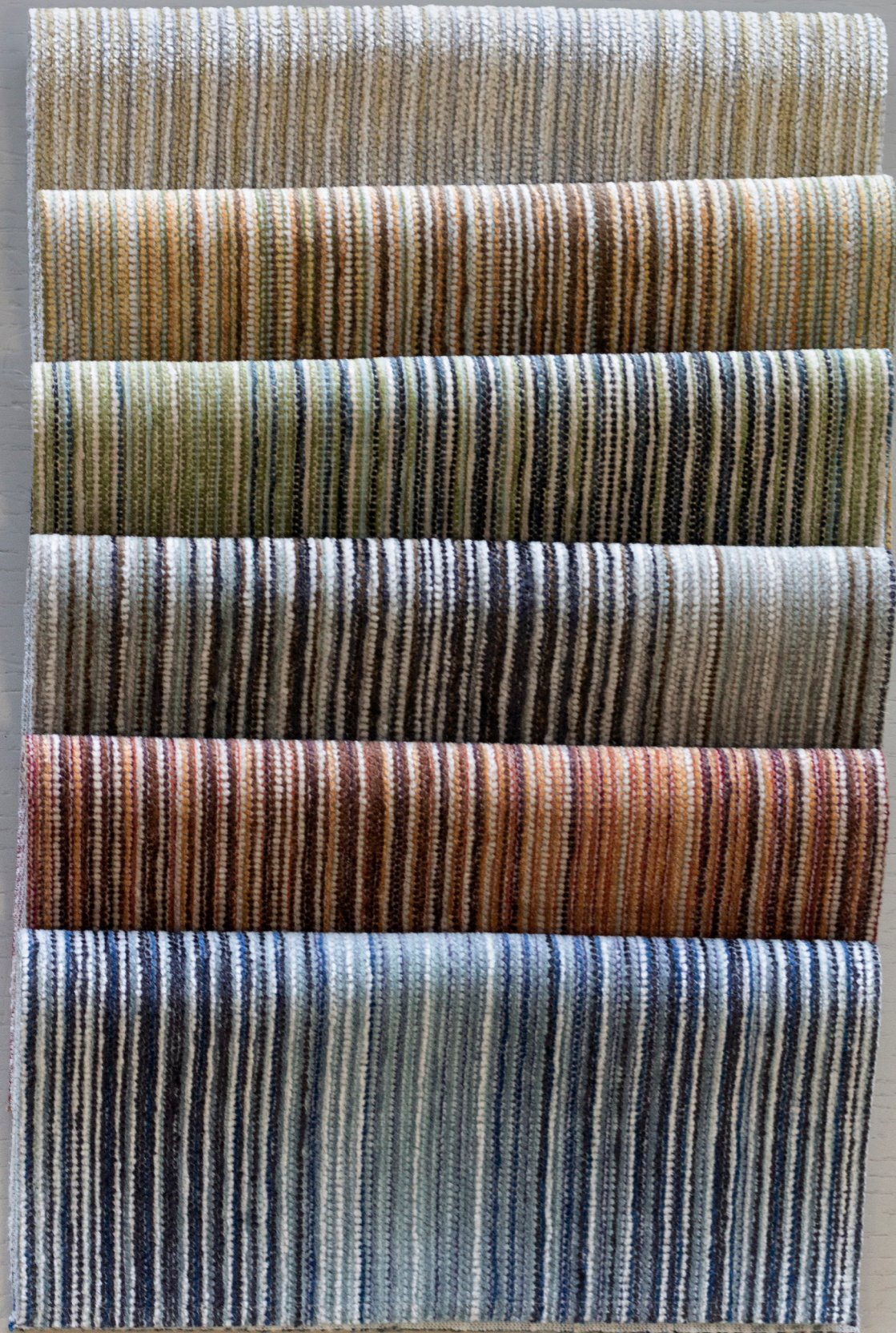


Persuede 718



Curtain Wall 1023





Landscape Blur

Landscape Blur was inspired by images seen through a fast-moving train window as the landscape blurred past in linear streaks of color.

PATTERN	1024
COLORWAYS	6
APPLICATION	Upholstery
CONTENT	76% rayon, 24% polyester
WIDTH	52" W
REPEAT	7 1/2" V
WEIGHT	18.72 ounces per linear yard
FINISH	None
BACKING	Polyester knit
ABRASION	100,000 double rubs (W)
ORIGIN	United States
FLAME RESISTANCE	California TB 117-2013 Section 1 (Pass)
MAINTENANCE	S: Clean with water free dry cleaning solvent Third party certified, SCS Indoor Advantage™ Gold.
SUSTAINABILITY	

HBF
TEXTILES



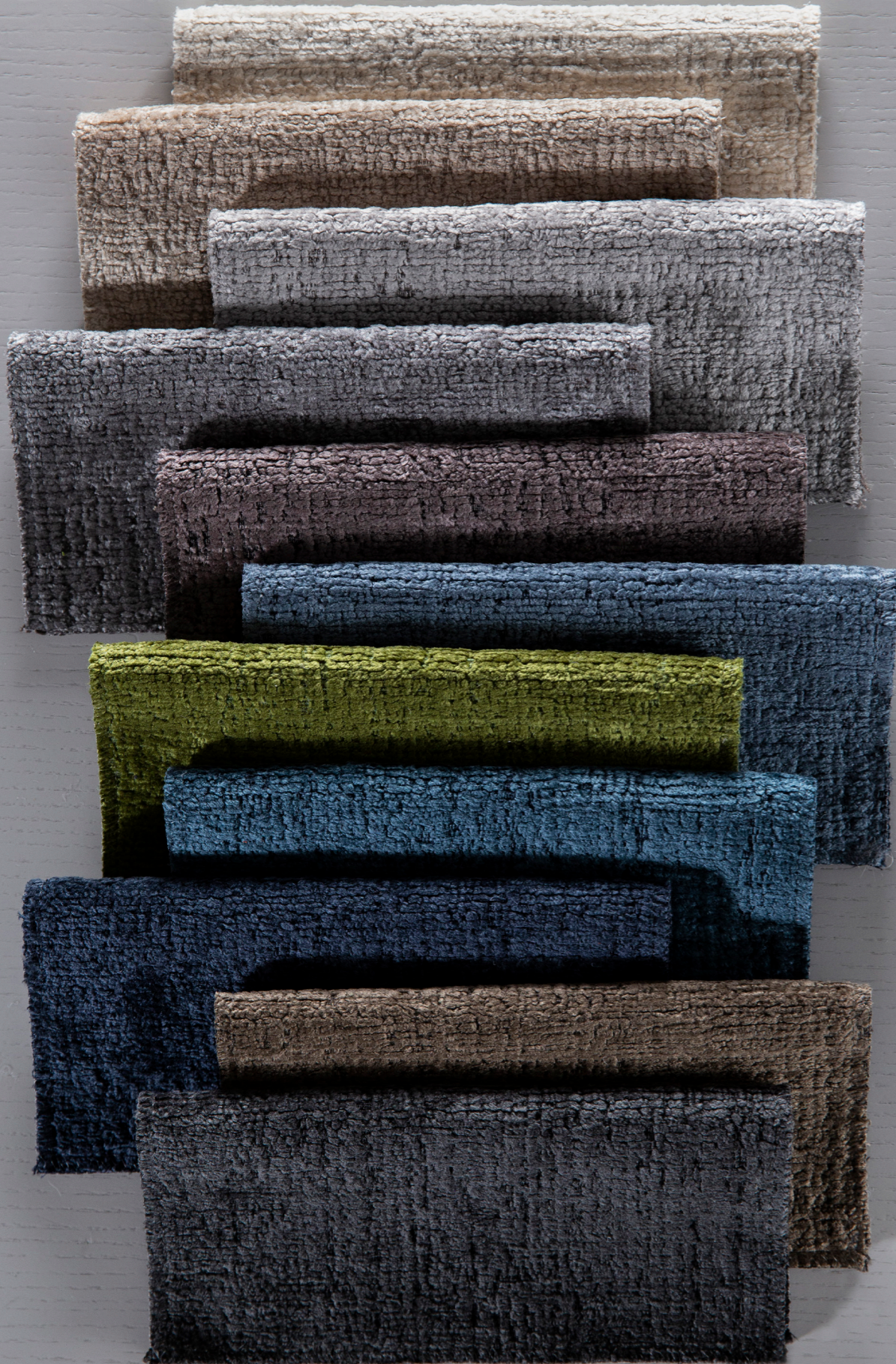
Landscape Blur 1024

HBF
TEXTILES



Landscape Blur 1024





Sherpa

Our faux fur Sherpa cloth is a distressed material with a lustrous hi-lo pile suggesting the patina of time.

PATTERN	1031
COLORWAYS	11
APPLICATION	Upholstery
CONTENT	57% acrylic, 43% polyester
WIDTH	56" W
REPEAT	None
WEIGHT	13.24 ounces per linear yard
FINISH	Stain resistant
BACKING	None
ABRASION	30,000 double rubs (W)
ORIGIN	Turkey
FLAME RESISTANCE	California TB 117-2013 Section 1 (Pass)
MAINTENANCE	WS: Clean with upholstery shampoo or mild dry cleaning solvent
SUSTAINABILITY	Third party certified, SCS Indoor Advantage™ Gold.







Persuede

Nothing feels more luxurious than a nubuck suede. Persuede is a top grain velour leather with a heavy nap that is soft, round and natural.

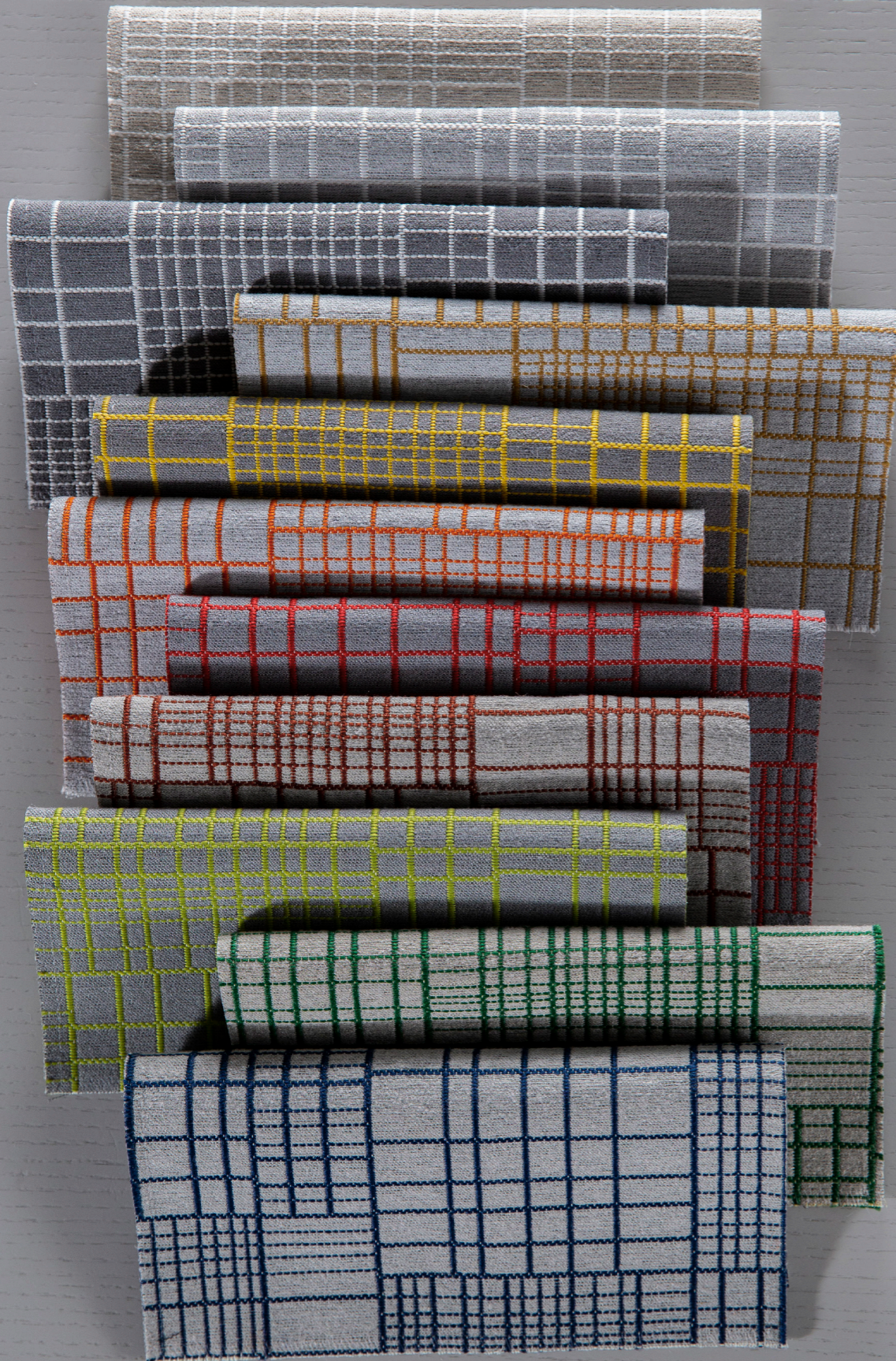
PATTERN	718
COLORWAYS	8
APPLICATION	Upholstery
CONTENT	Velour grain leather, full aniline dye
AVERAGE HIDE	55 square feet
THICKNESS	1.2-1.4 mm
FINISH	Water resistant with velour two-way effect
BACKING	None
ORIGIN	Italy
SUSTAINABILITY	Environmental Product Declaration & process EPD (ISO 14025). Manufactured in an ISO 14001 Certified Facility. Third party certified, SCS Indoor Advantage™ Gold





Persuede 718





Curtain Wall

Like an architectural curtain wall, our **Curtain Wall** features shifting grids in varying scales giving it an appealing graphic quality. The etched lines are juxtaposed against a linen-like ground.

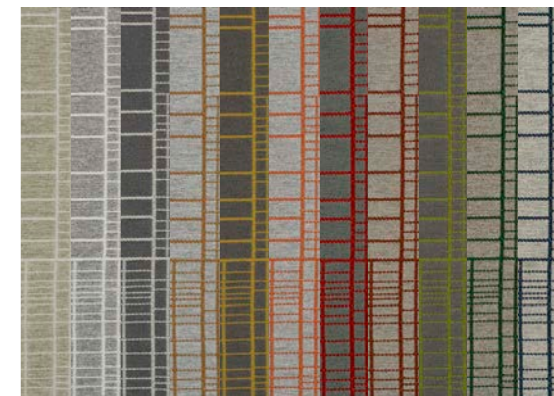
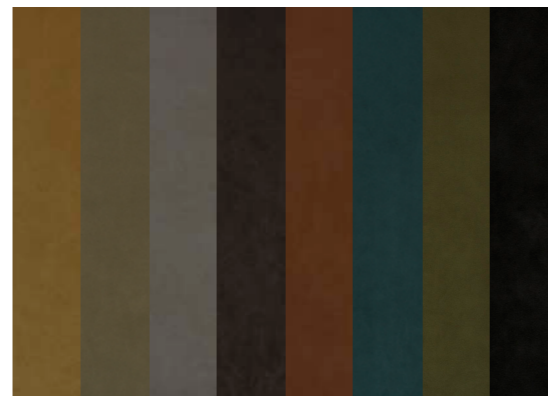
PATTERN	1023
COLORWAYS	11
APPLICATION	Upholstery, wrapped panel, systems panel
CONTENT	43% Post Industrial Recycled Polyester, 38% Post Consumer Recycled Polyester, 19% Polyester
WIDTH	57" W
REPEAT	16 1/8" V x 14 3/4" H
WEIGHT	21.14 ounces per linear yard
FINISH	None
BACKING	Acrylic
ABRASION	51,000 double rubs (W)
ORIGIN	United States
FLAME RESISTANCE	California TB 117-2013 Section 1 (Pass), Class A rated ASTM E-84 (unadhered)
MAINTENANCE	WS: Clean with upholstery shampoo or mild dry cleaning solvent. Bleach cleanable solutions up to 20% for cleaning difficult stains.
SUSTAINABILITY	81% recycled content. Third party certified, SCS Indoor Advantage™ Gold.



Curtain Wall 1023



Spring 2020 Collection Pattern Color Rotation



Landscape Blur 1024

- 12 Sand Dune
- 80 Winter Canal
- 20 Sahara Camel
- 30 Canyon Rust
- 60 Woodland
- 54 Fjord Blue

Sherpa 1031

- 11 Polar White
- 20 Sahara Camel
- 80 Mountain Grey
- 85 Sea Cave
- 87 Smokey Ridge
- 54 Icy Blue
- 66 Nile Green
- 56 Blue Lagoon
- 59 Stormy Sea
- 37 Cobbled Road
- 89 Rock Summit

Persuede 718

- 20 Sahara Camel
- 37 Cobbled Road
- 84 Cloud Grey
- 39 Otter Brown
- 30 Canyon Rust
- 58 Jagged Coast
- 66 Nile Green
- 90 Deep Abyss

Curtain Wall 1023

- 11 Zaha
- 80 Philip
- 85 Ludwig
- 25 Renzo
- 22 Michael
- 45 Denise
- 44 Robert
- 36 Frank
- 63 Louis
- 62 Richard
- 59 Roark

Spring 2020 Collection