

HBF
TEXTILES

WINTER 2019 COLLECTION BY MARY JO MILLER



Winter 2019 Collection



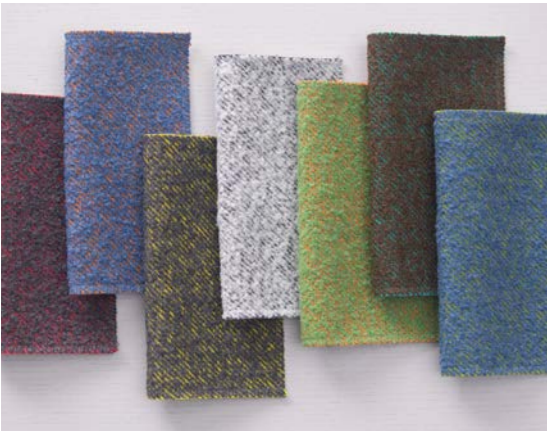
Mary Jo Miller

Mary Jo Miller, Vice President, Design and Creative Direction for HBF Textiles has been the creative visionary behind HBF Textiles for over twenty five years. During her tenure, Miller has led the development of a number of award-winning collections and been responsible for translating the works of interior designers, architects and industrial designers into the textile medium. Her own textile collections are experiments with color, texture and graphics and represent some of HBF Textiles best sellers.

“Cuddly, cozy, furry, soft.... like a favorite sweater that’s been lovingly broken in. Winter 2019 celebrates yarn and its ability to be transformative to the surface of a textile.”

– Mary Jo Miller

Winter 2019 Collection



Poodle 1009



Quill 1011



Bunny 1012



Night Earth 1013





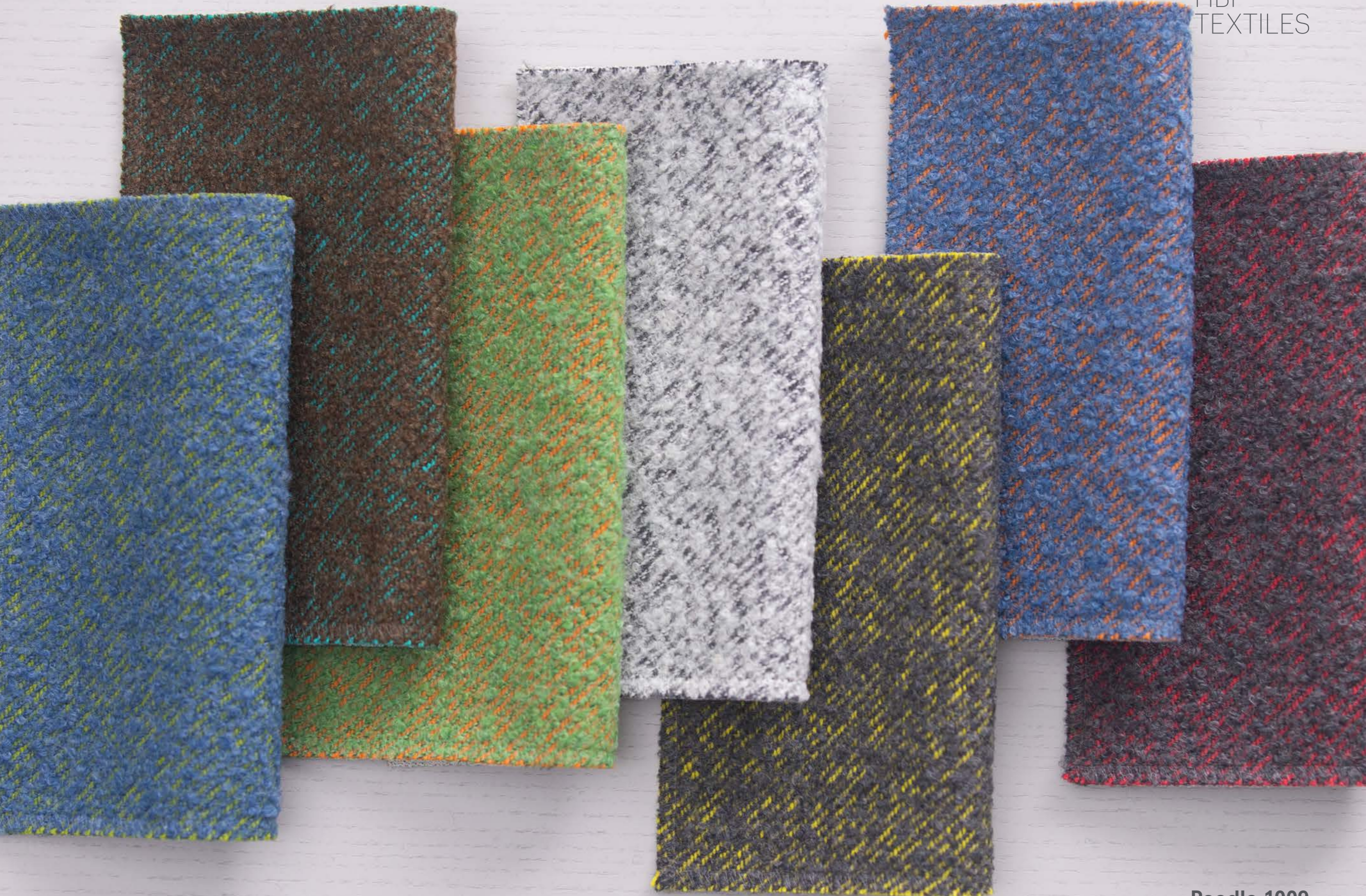
Poodle

Poodle has an abundance of curls atop a neon twill weave for a material that balances intense color with neutral ringlets.

PATTERN	1009
COLORWAYS	7
APPLICATION	Upholstery
CONTENT	77% wool, 14% acrylic, 6% polyester, 3% nylon
WIDTH	52" W
REPEAT	None
WEIGHT	22.10 ounces per linear yard
FINISH	None
BACKING	Polyester knit
ABRASION	40,000 cycles (M)
ORIGIN	New Zealand
FLAME RESISTANCE	California TB 117-2013 Section 1 (Pass)
MAINTENANCE	WS: Clean with upholstery shampoo or mild dry cleaning solvent.
SUSTAINABILITY	77% rapidly renewable content

HBF
TEXTILES

Poodle 1009





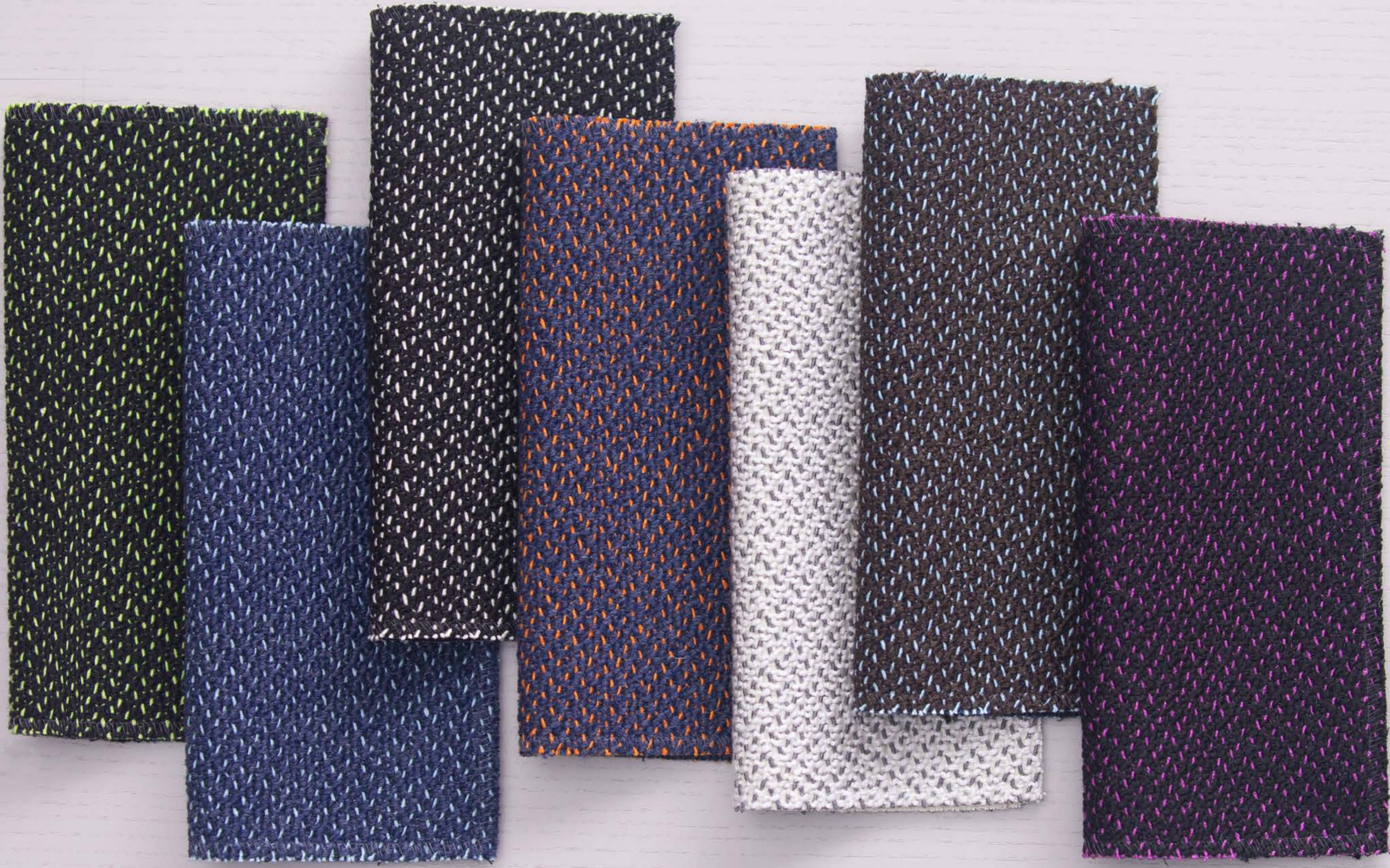
Quill

With needle-like precision, this juxtaposition between a soft ground and an iridescent cord makes Quill an exciting dimensional material.

PATTERN	1011
COLORWAYS	7
APPLICATION	Upholstery
CONTENT	30% cotton, 26% viscose, 20% acrylic, 14% polyester, 10% wool
WIDTH	54" W
REPEAT	None
WEIGHT	36.24 ounces per linear yard
FINISH	Stain resistant
BACKING	None
ABRASION	80,000 double rubs (W)
ORIGIN	Italy
FLAME RESISTANCE	California TB 117-2013 Section 1 (Pass)
MAINTENANCE	WS: Clean with upholstery shampoo or mild dry cleaning solvent
SUSTAINABILITY	40% rapidly renewable content









Bunny 1012



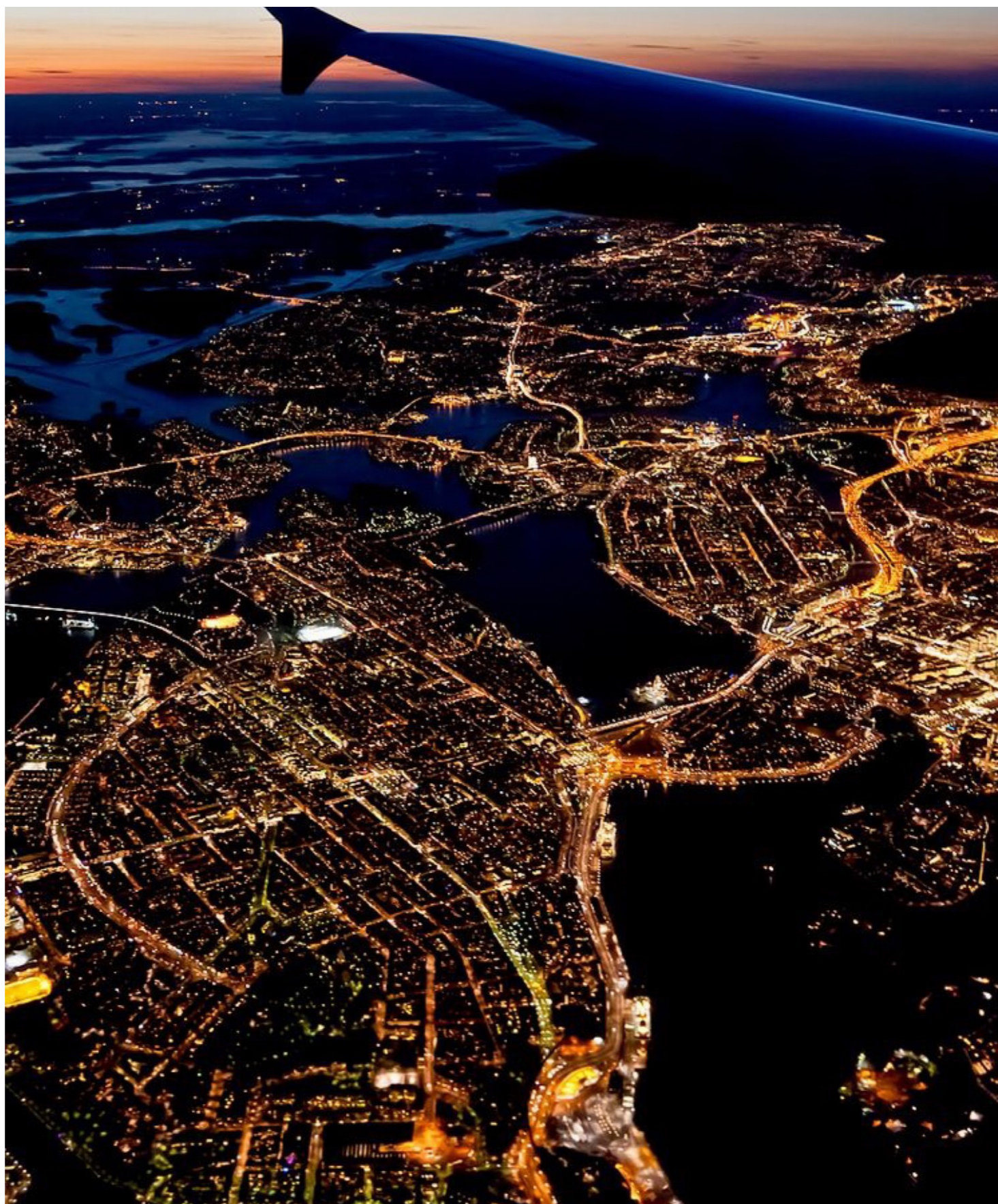
Bunny

This ultra-cuddly fabric begs to be petted. Not a single bunny was hurt in the production of this faux fur interpretation, lol! Bunny is comprised of wool and cashmere.

PATTERN	1012
COLORWAYS	3
APPLICATION	Upholstery
CONTENT	95% wool, 5% cashmere
WIDTH	58" W
REPEAT	None
WEIGHT	24.30 ounces per linear yard
FINISH	None
BACKING	None
ABRASION	20,000 cycles (M)
ORIGIN	Belgium
FLAME RESISTANCE	California TB 117-2013 Section 1 (Pass)
MAINTENANCE	WS: Clean with upholstery shampoo or mild dry cleaning solvent
SUSTAINABILITY	100% rapidly renewable content
NOTES	Directional pile







Night Earth

Night Earth's design is inspired by aerial photography of cities where grid lighting lines break and fade. The cloth has a distressed patina reminiscent of a favorite heirloom rug that refuses to wear out.

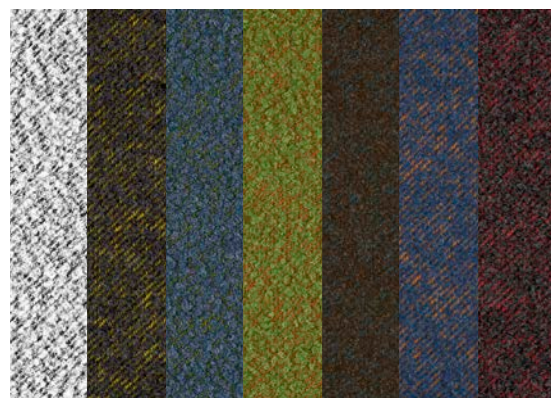
PATTERN	1013
COLORWAYS	7
APPLICATION	Upholstery
CONTENT	54% polyester, 43% cotton, 3% nylon
WIDTH	53" W
REPEAT	25 1/2" V x 26 3/4" H
WEIGHT	27.36 ounces per linear yard
FINISH	Alta™ Plush
BACKING	Acrylic
ABRASION	100,000 double rubs (W)
ORIGIN	United States
FLAME RESISTANCE	California TB 117-2013 Section 1 (Pass)
MAINTENANCE	S: Clean with water free dry cleaning solvent
SUSTAINABILITY	43% rapidly renewable content
NOTES	Large scale repeat. Random repeat is intended for upholstery application.





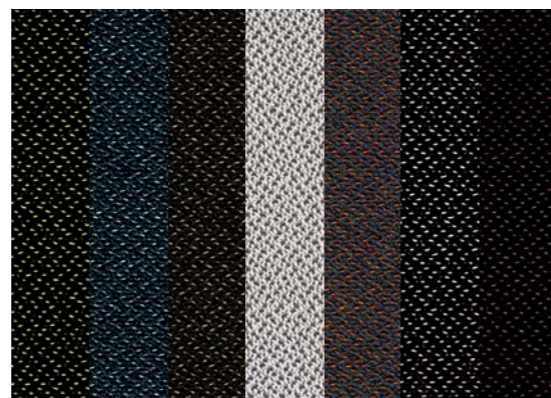


Winter 2019 Collection Pattern Color Rotation



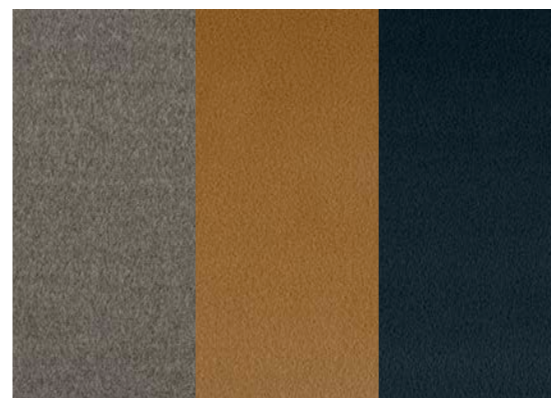
Poodle 1009

- | | |
|-------------|----------|
| 10 Frenchie | 44 Bella |
| 22 Mini | |
| 67 Teacup | |
| 63 Mochi | |
| 39 Coco | |
| 58 Fifi | |



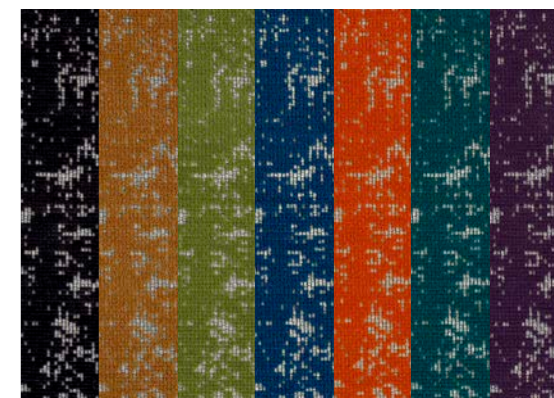
Quill 1011

- | | |
|--------------|------------|
| 62 Magpie | 77 Peacock |
| 54 Swan | |
| 39 Owl | |
| 10 Goose | |
| 59 Bluebird | |
| 90 Porcupine | |



Bunny 1012

- | |
|---------------|
| 85 Hare |
| 30 Velvet |
| 58 Cottontail |



Night Earth 1013

- | | |
|------------------|------------|
| 89 New York | 77 Beijing |
| 30 Barcelona | |
| 63 Toronto | |
| 59 Chicago | |
| 45 San Francisco | |
| 56 Miami | |

Winter 2019 Collection