

HBF
TEXTILES

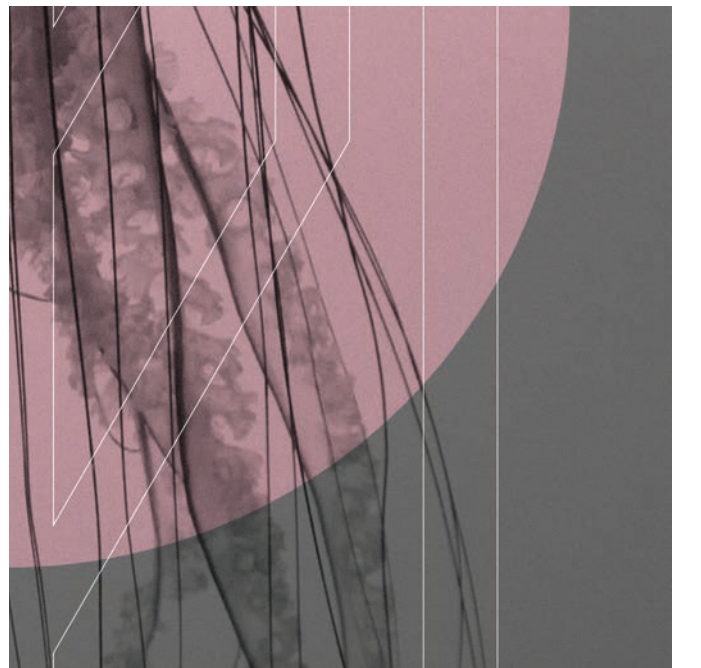
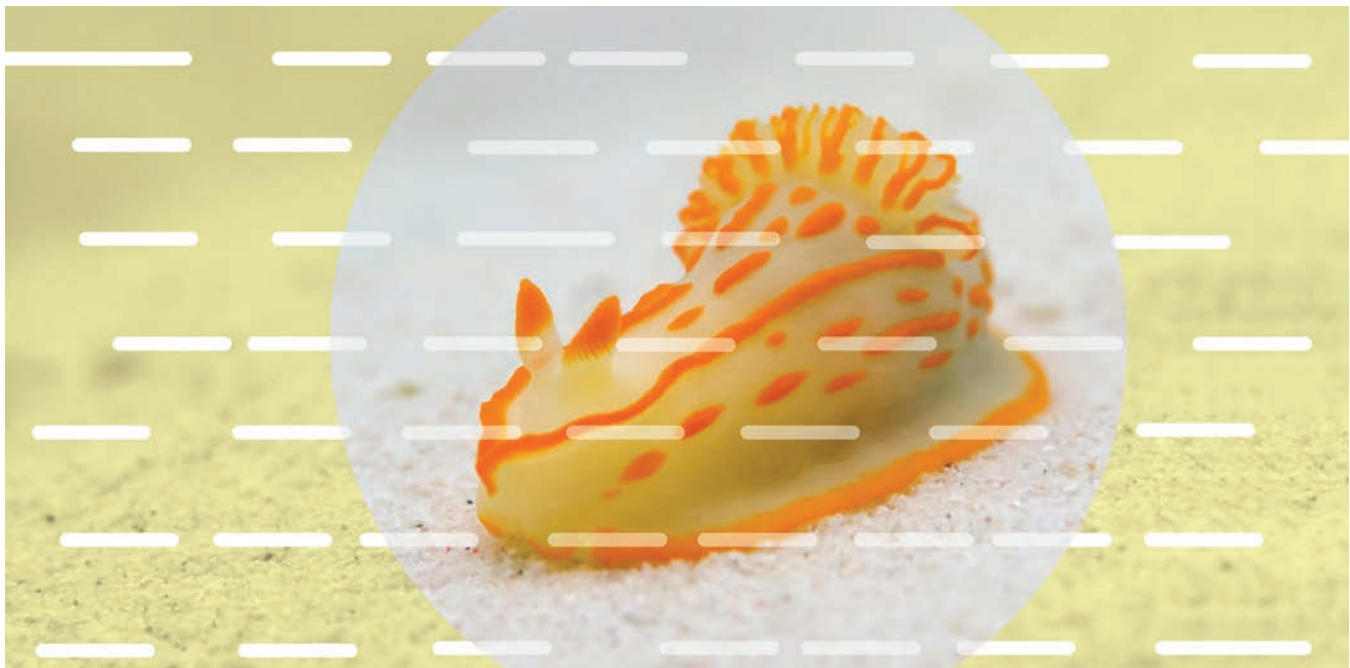
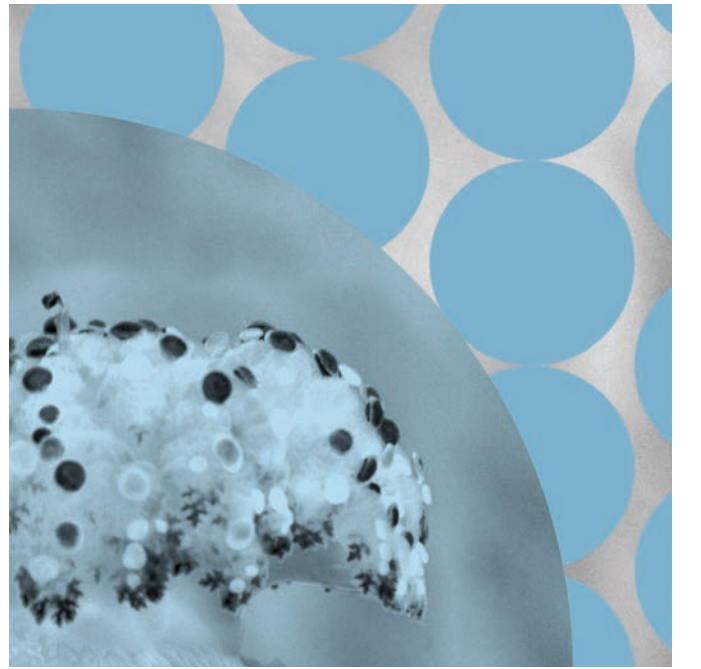
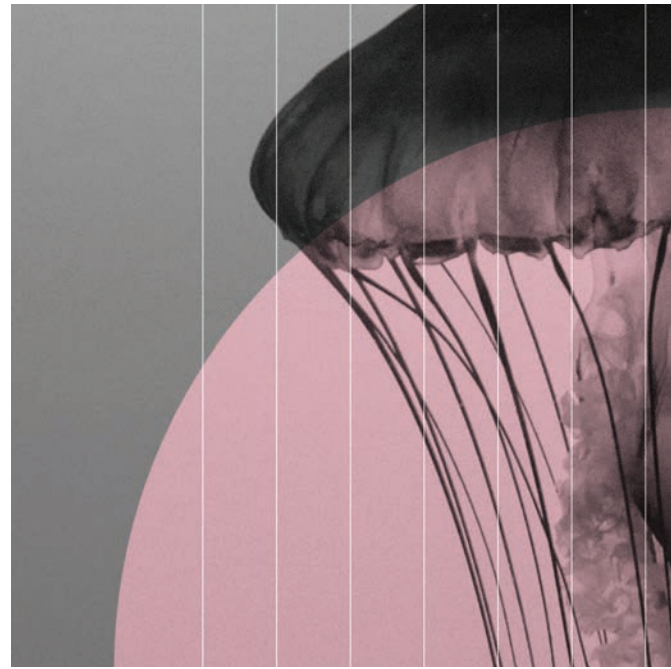


**Curious
Crowd
Collection
Designed by
Ghislaine
Viñas**



“My connection to water is deep and constant. Don’t put me on a mountain top or in a desert because for me the ocean is my Nirvana. I’ve always lived by the ocean, and jellyfish were a part of my childhood. Even after feeling their viciously painful sting, I still admire these gelatinous creatures for their distinct beauty. But sea slugs were a more recent find, and I can recall my excitement at discovering these delightful minuscule sea creatures. It was the outrageous colors, patterns, shapes and clownish attitude of the sea slug and the undulating jellyfish that inspired me to create this collection.”

– **Ghislaine Viñas ‘18**

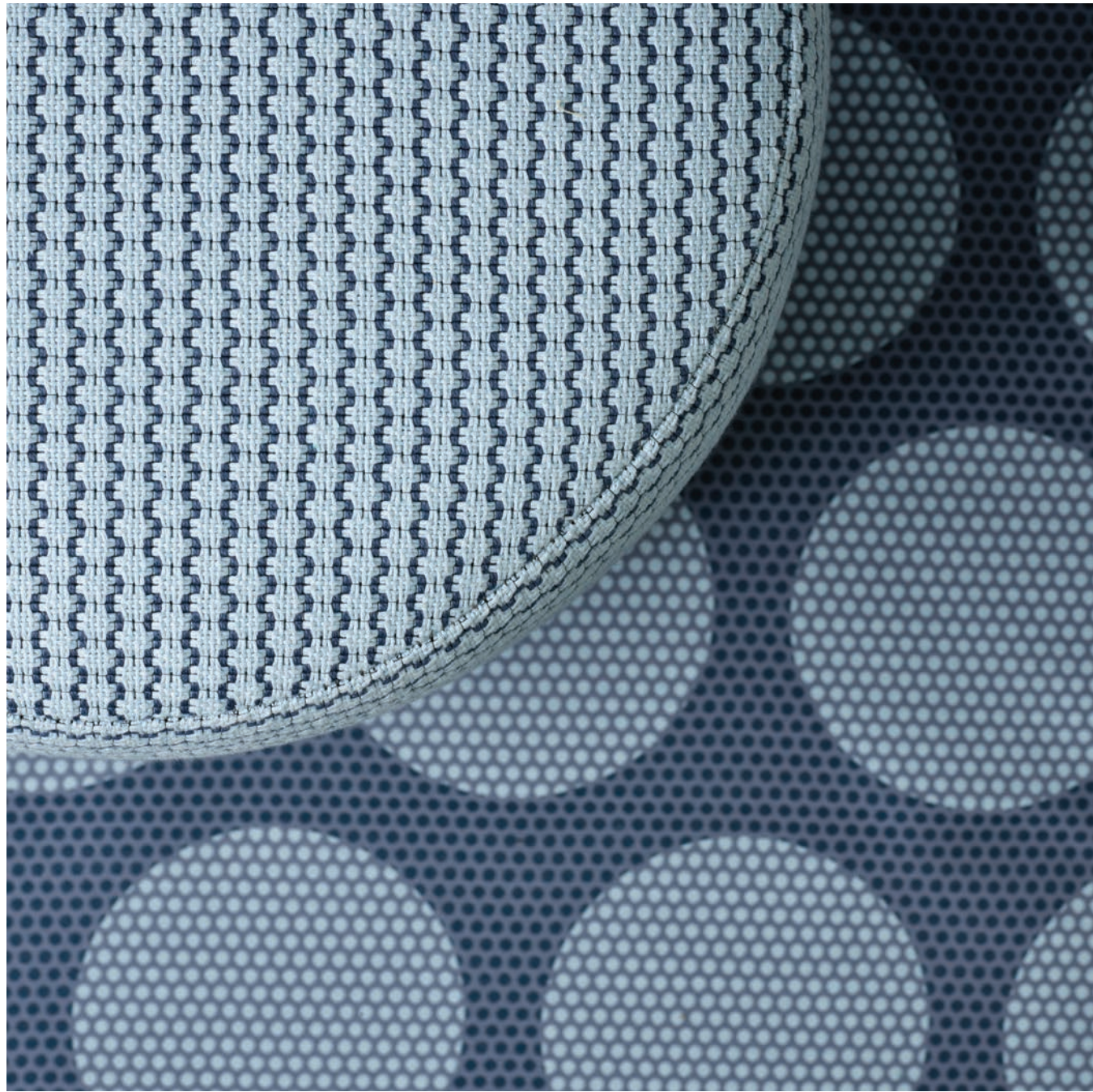


Captain Bubble

This bumpy textile was inspired by the bubbles on the tentacles of this jellyfish. The weft and warp yarns float on the surface to create a raised bubble.

*Photograph by Jamie Viñas





Madam Dottie

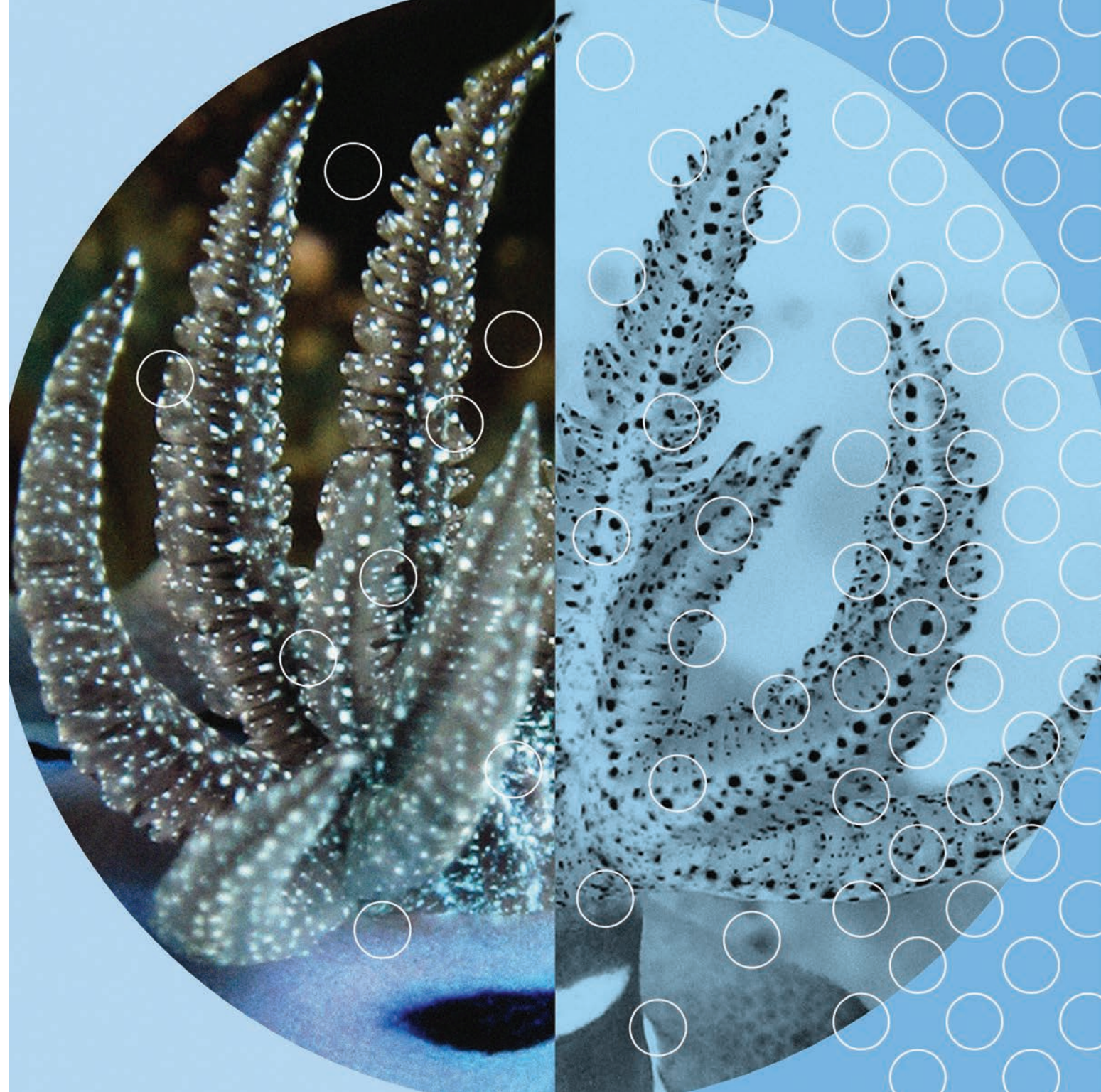
The undulating rhythm of a school of jellyfish inspired the repetitious circular forms that do double duty both as stunning upholstery and as a dynamic vertical wrapped panel application.

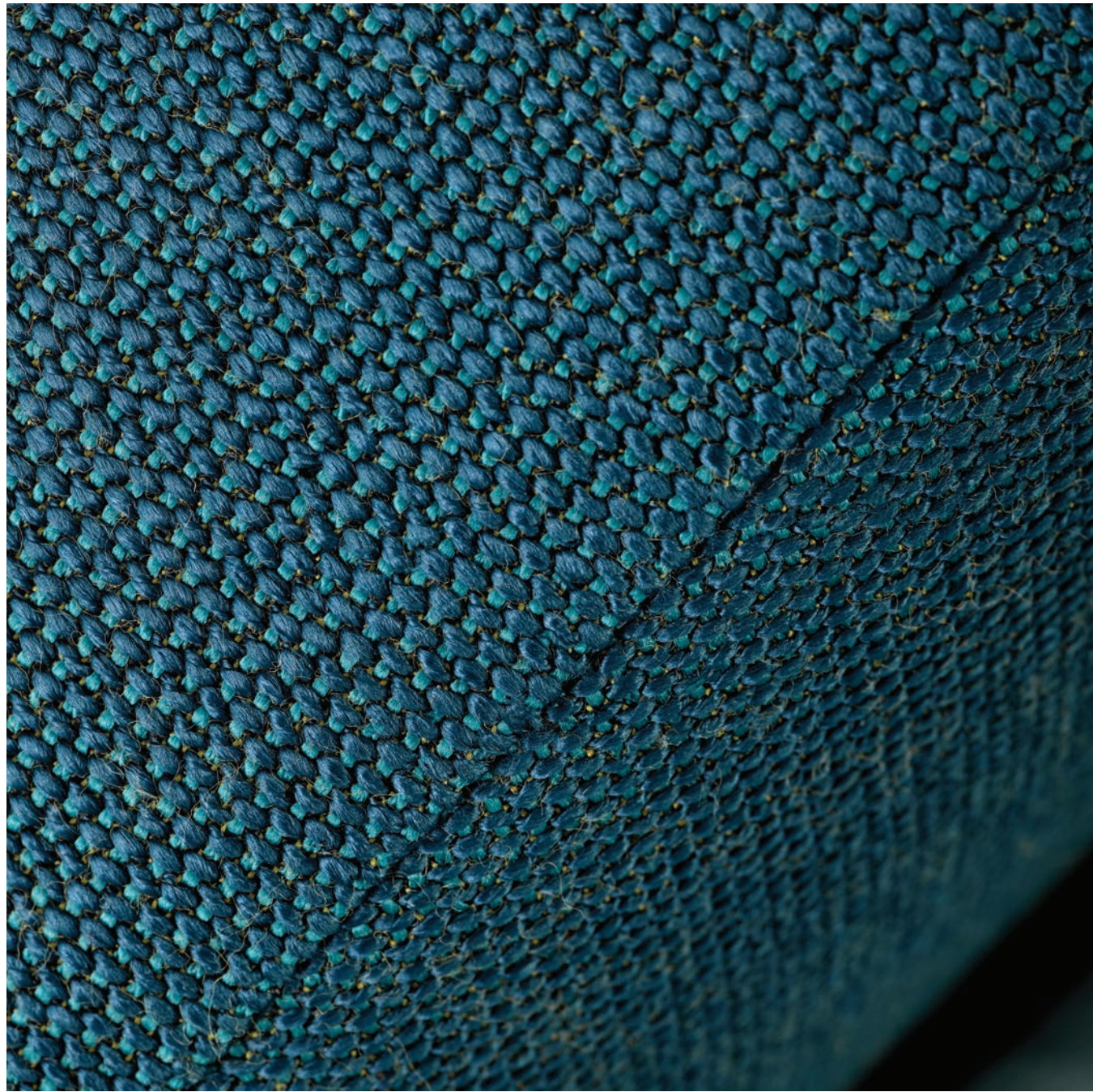




Sister Solid

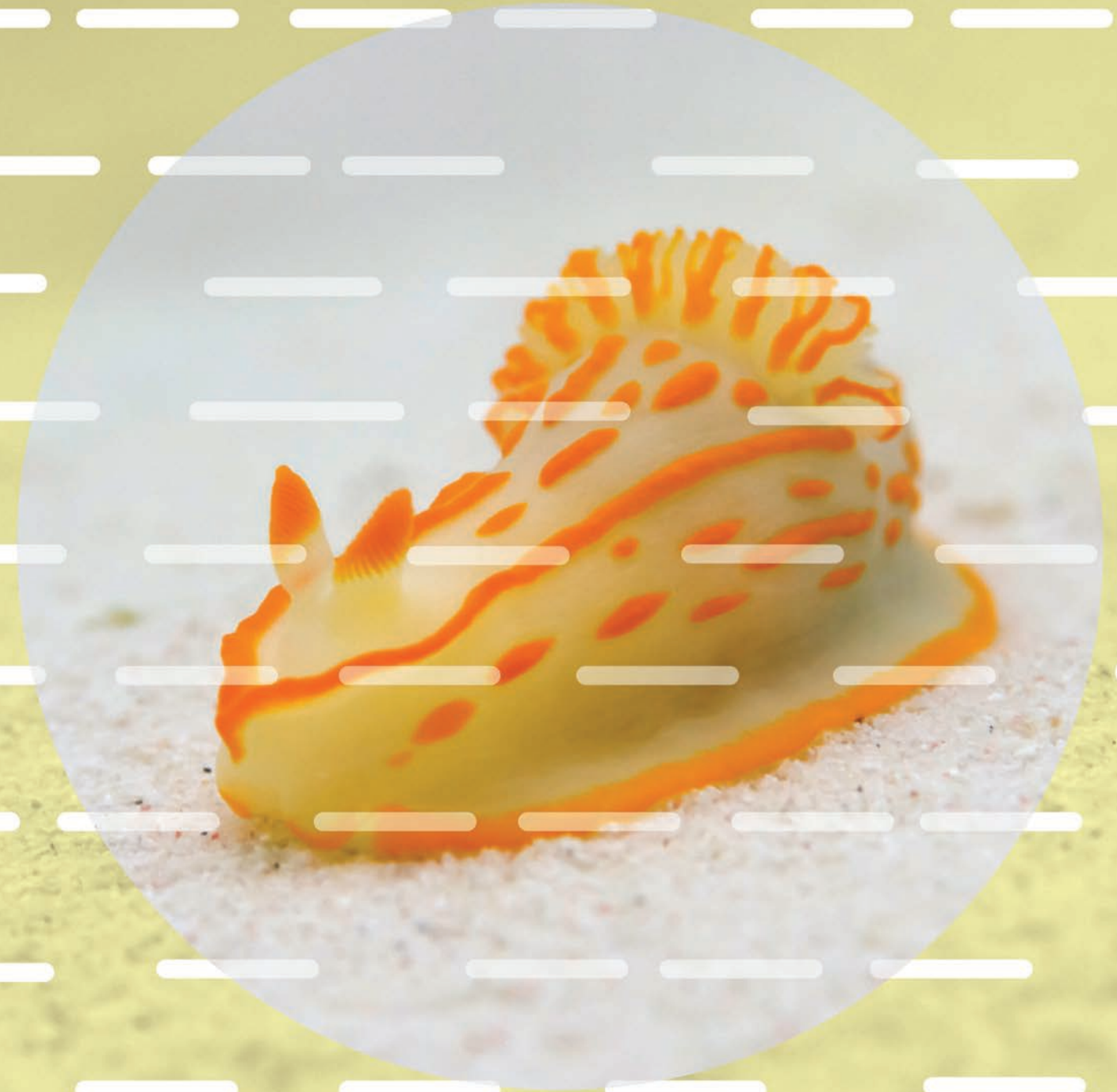
This nudibranch, or more commonly referred to as sea slug, has gills on its back and a closer look reveals a beautiful texture which inspired our soft but slightly bumpy textile. The sheen of this “chainmail” like material gives the allure of a woven metallic cloth.





Mr. Dimple

Interrupted lines on the body of this curious sea slug inspired the look and feel of this textile with accent dashes undulating on the luscious surface. Mr. Dimple is a luxury upholstery knit with an outdoor performance personality.





Ms. Quilty

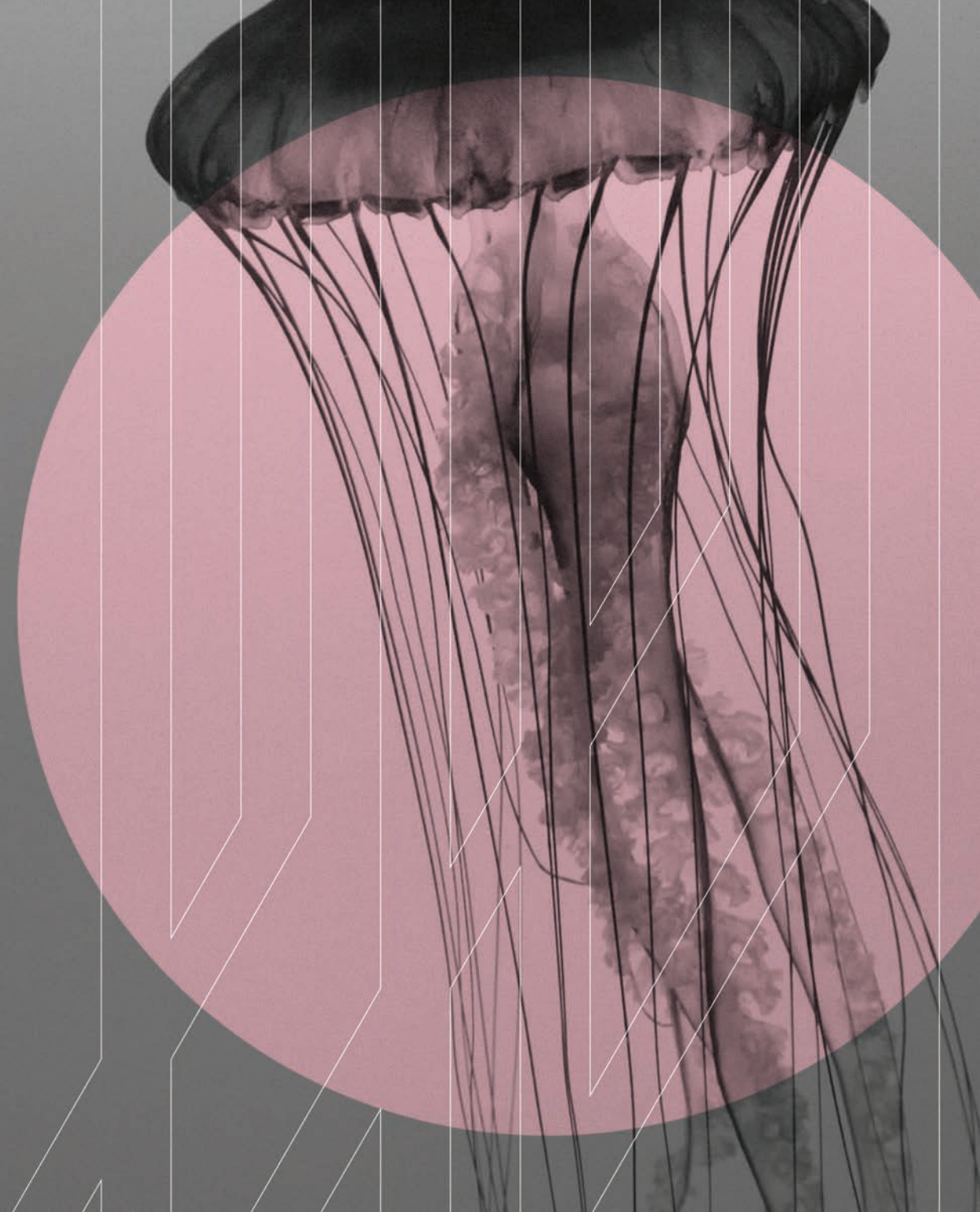
Enchanted by these incredibly vibrant playful ocean mollusks, we repeated their outline and overlapped the shapes to create the slug-like pattern for this uber soft quilted knit. Ms. Quilty has the comfort and style of an indoor knit, yet is designed to perform comfortably outdoors.





Sir Stripe-a-lot

A classic cabana stripe gets a sideways kick after studying the entangled tentacles of the jellyfish. Sir Stripe-a-lot is crisply detailed with matte solution dyed acrylic yarns that are cozy, resilient and approved for outdoor applications.

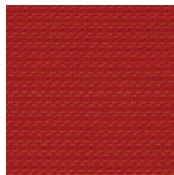




Ghislaine Viñas

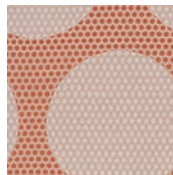
Ghislaine Viñas has always enjoyed looking at things from a different angle — placing things upside down and giving them a little shake. Born in the Netherlands and growing up in South Africa influenced the way she looks at the world and how she approaches her work in residential, commercial, hospitality and product design. Ghislaine studied interior design at Philadelphia University and established her design firm in New York City in 1999. Her projects have garnered numerous design awards and have been published nationally and internationally. Ghislaine continues to be inspired by the world around her and intends to continue shaking things up.





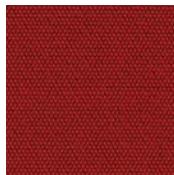
Captain Bubble

COLORWAYS 8
APPLICATION Upholstery
CONTENT 59% Cotton, 24% Rayon, 14% Polyester, 3% Nylon
WIDTH 51" W
REPEAT 3/4" V x 3/8" H
FINISH Alta™
BACKING Acrylic
ABRASION 100,000 double rubs (Wyzenbeek)
ORIGIN United States
FR RATING California TB 117-2013 Section 1 (Pass)
MAINTENANCE WS: Clean with upholstery shampoo or mild dry cleaning solvent
SUSTAINABILITY 59% rapidly renewable content



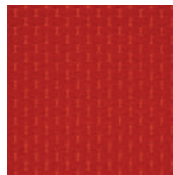
Madam Dottie

COLORWAYS 9
APPLICATION Upholstery, wrapped and systems panel
CONTENT 83% Polyester, 17% Nylon
WIDTH 57" W
REPEAT 13 3/4" V x 7 1/2" H
FINISH None
BACKING Acrylic
ABRASION 100,000 double rubs (M)
ORIGIN United States
FR RATING California TB 117-2013 Section 1 (Pass), Class A rated ASTM E-84 (unadhered)
MAINTENANCE WS: Clean with upholstery shampoo or mild dry cleaning solvent. Bleach cleanable solutions of up to 10% for cleaning difficult stains.
NOTES Large scale design. Bleach cleanable.



Sister Solid

COLORWAYS 13
APPLICATION Upholstery
CONTENT 85% Polyester, 15% acrylic
WIDTH 55" W
REPEAT None
FINISH Alta™
BACKING Acrylic
ABRASION 100,000 double rubs (Wyzenbeek)
ORIGIN Germany
FR RATING California TB 117-2013 Section 1 (Pass)
MAINTENANCE S: Clean with water free dry cleaning solvent. Bleach solutions of up to 10% for cleaning difficult stains.
NOTES Bleach cleanable.



Mr. Dimple

COLORWAYS 7
APPLICATION Upholstery
CONTENT 63% Sunbrella® acrylic, 36.6% polyester, .4% spandex
WIDTH 68" W
REPEAT 5/8" V x 3/4" H
FINISH Water and stain repellent
BACKING None
ABRASION 100,000 double rubs (Wyzenbeek)
ORIGIN United States
FR RATING California TB 117-2013 Section 1 (Pass)
MAINTENANCE WS: Clean with upholstery shampoo or mild dry cleaning solvent. Bleach cleanable solutions of up to 10% for cleaning difficult stains.
NOTES Approved for outdoor use. This product utilizes a knit construction that is built to stretch in all directions. Special care may be required for proper upholstery application. Bleach cleanable.



Ms. Quilty

COLORWAYS 5
APPLICATION Upholstery
CONTENT 63.8% Sunbrella® acrylic, 35.8% polyester, .4% spandex
WIDTH 70" W
REPEAT 19 3/4" V x 24" H
FINISH Water and stain repellent
BACKING None
ABRASION 100,000 double rubs (Wyzenbeek)
ORIGIN United States
FR RATING California TB 117-2013 Section 1 (Pass)
MAINTENANCE WS: Clean with upholstery shampoo or mild dry cleaning solvent. Bleach solutions of up to 10% for cleaning difficult stains.
NOTES Approved for outdoor use. This product utilizes a knit construction that is built to stretch in all directions. Special care may be required for proper upholstery application. Large scale design. Bleach cleanable.



Sir Stripe-a-lot

COLORWAYS 11
APPLICATION Upholstery
CONTENT 67% Sunbrella® Acrylic, 33% Polyester
WIDTH 54" W
REPEAT 28" V x 27 3/4" H
FINISH Water and stain repellent
BACKING None
ABRASION 92,000 double rubs (Wyzenbeek)
ORIGIN United States
FR RATING California TB 117-2013 Section 1 (Pass)
MAINTENANCE WS: Clean with upholstery shampoo or mild dry cleaning solvent. Bleach solutions of up to 20% for cleaning difficult stains. facts® Silver
SUSTAINABILITY
NOTES Approved for outdoor use. Large scale design. Bleach cleanable.

